



TRILOBITE TESTING, INC.

DRILL STEM TEST REPORT

Vincent Oil Corporation
 155 N Market Ste 700
 Wichita, KS 67202
 ATTN: Ken LeBlanc

27-28S-23W Ford
2-27 Sandy Land
 Job Ticket: 57768 **DST#: 4**
 Test Start: 2014.09.26 @ 23:19:50

GENERAL INFORMATION:

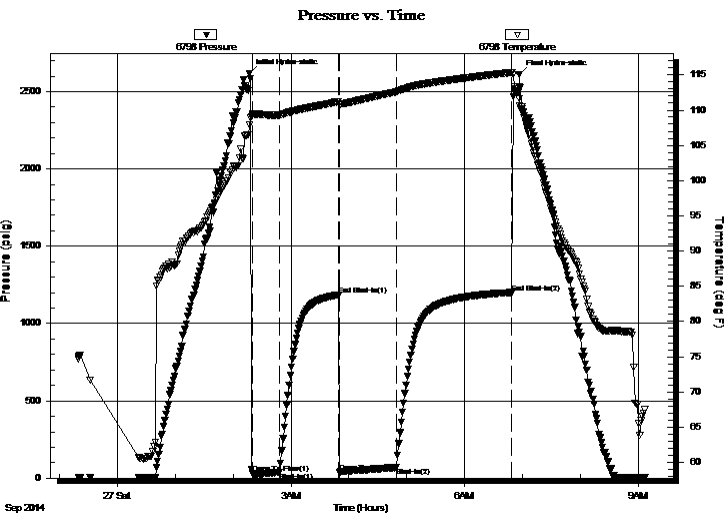
Formation: **Mississippi**
 Deviated: No Whipstock: ft (KB)
 Time Tool Opened: 02:20:05
 Time Test Ended: 09:06:50
 Interval: **5205.00 ft (KB) To 5220.00 ft (KB) (TVD)**
 Total Depth: 5220.00 ft (KB) (TVD)
 Hole Diameter: 7.88 inches Hole Condition: Good
 Test Type: Conventional Bottom Hole (Reset)
 Tester: Leal Cason
 Unit No: 74
 Reference Elevations: 2517.00 ft (KB)
 2505.00 ft (CF)
 KB to GR/CF: 12.00 ft

Serial #: 6798

Inside

Press @ Run Depth: 68.68 psig @ 5206.00 ft (KB) Capacity: 8000.00 psig
 Start Date: 2014.09.26 End Date: 2014.09.27 Last Calib.: 2014.09.27
 Start Time: 23:19:51 End Time: 09:06:50 Time On Btm: 2014.09.27 @ 02:16:50
 Time Off Btm: 2014.09.27 @ 06:56:35

TEST COMMENT: IF: Strong Blow , BOB in 90 seconds
 IS: Weak Surface Blow Back
 FF: Strong Blow , BOB immediate, GTS in 27 minutes, Guaged & Caught Sample
 FS: Weak Surface Blow Back



PRESSURE SUMMARY

Time (Min.)	Pressure (psig)	Temp (deg F)	Annotation
0	2617.99	107.86	Initial Hydro-static
4	30.89	109.37	Open To Flow (1)
32	37.85	109.31	Shut-In(1)
93	1186.03	111.21	End Shut-In(1)
94	37.99	110.87	Open To Flow (2)
153	68.68	112.59	Shut-In(2)
273	1200.91	115.35	End Shut-In(2)
280	2610.50	111.68	Final Hydro-static

Recovery

Length (ft)	Description	Volume (bbl)
0.00	5075 GIP	0.00
122.00	GWMCO 10%G 10%W10%M 70%O	1.71

* Recovery from multiple tests

Gas Rates

	Choke (inches)	Pressure (psig)	Gas Rate (Mcf/d)
First Gas Rate	0.25	6.00	32.36
Last Gas Rate	0.25	10.00	38.71
Max. Gas Rate	0.25	10.00	38.71



**TRILOBITE
TESTING, INC.**

DRILL STEM TEST REPORT

FLUID SUMMARY

Vincent Oil Corporation

27-28S-23W Ford

155 N Market Ste 700
Wichita, KS 67202

2-27 Sandy Land

Job Ticket: 57768

DST#: 4

ATTN: Ken LeBlanc

Test Start: 2014.09.26 @ 23:19:50

Mud and Cushion Information

Mud Type: Gel Chem

Cushion Type:

Oil API:

deg API

Mud Weight: 9.00 lb/gal

Cushion Length:

ft

Water Salinity:

62000 ppm

Viscosity: 49.00 sec/qt

Cushion Volume:

bbbl

Water Loss: 10.77 in³

Gas Cushion Type:

Resistivity: ohm.m

Gas Cushion Pressure:

psig

Salinity: 6900.00 ppm

Filter Cake: 0.02 inches

Recovery Information

Recovery Table

Length ft	Description	Volume bbl
0.00	5075 GIP	0.000
122.00	GWMCO 10%G 10%W10%M 70%O	1.711

Total Length: 122.00 ft Total Volume: 1.711 bbl

Num Fluid Samples: 0

Num Gas Bombs: 0

Serial #:

Laboratory Name:

Laboratory Location:

Recovery Comments: RW was .13 @ 68 degrees



**TRILOBITE
TESTING, INC.**

DRILL STEM TEST REPORT

GAS RATES

Vincent Oil Corporation

27-28S-23W Ford

155 N Market Ste 700
Wichita, KS 67202

2-27 Sandy Land

Job Ticket: 57768

DST#: 4

ATTN: Ken LeBlanc

Test Start: 2014.09.26 @ 23:19:50

Gas Rates Information

Temperature: 59 (deg F)

Relative Density: 0.65

Z Factor: 0.8

Gas Rates Table

Flow Period	Elapsed Time	Choke (inches)	Pressure (psig)	Gas Rate (Mcf/d)
2	30	0.25	6.00	32.36
2	40	0.25	7.00	33.95
2	50	0.25	8.00	35.54
2	60	0.25	10.00	38.71

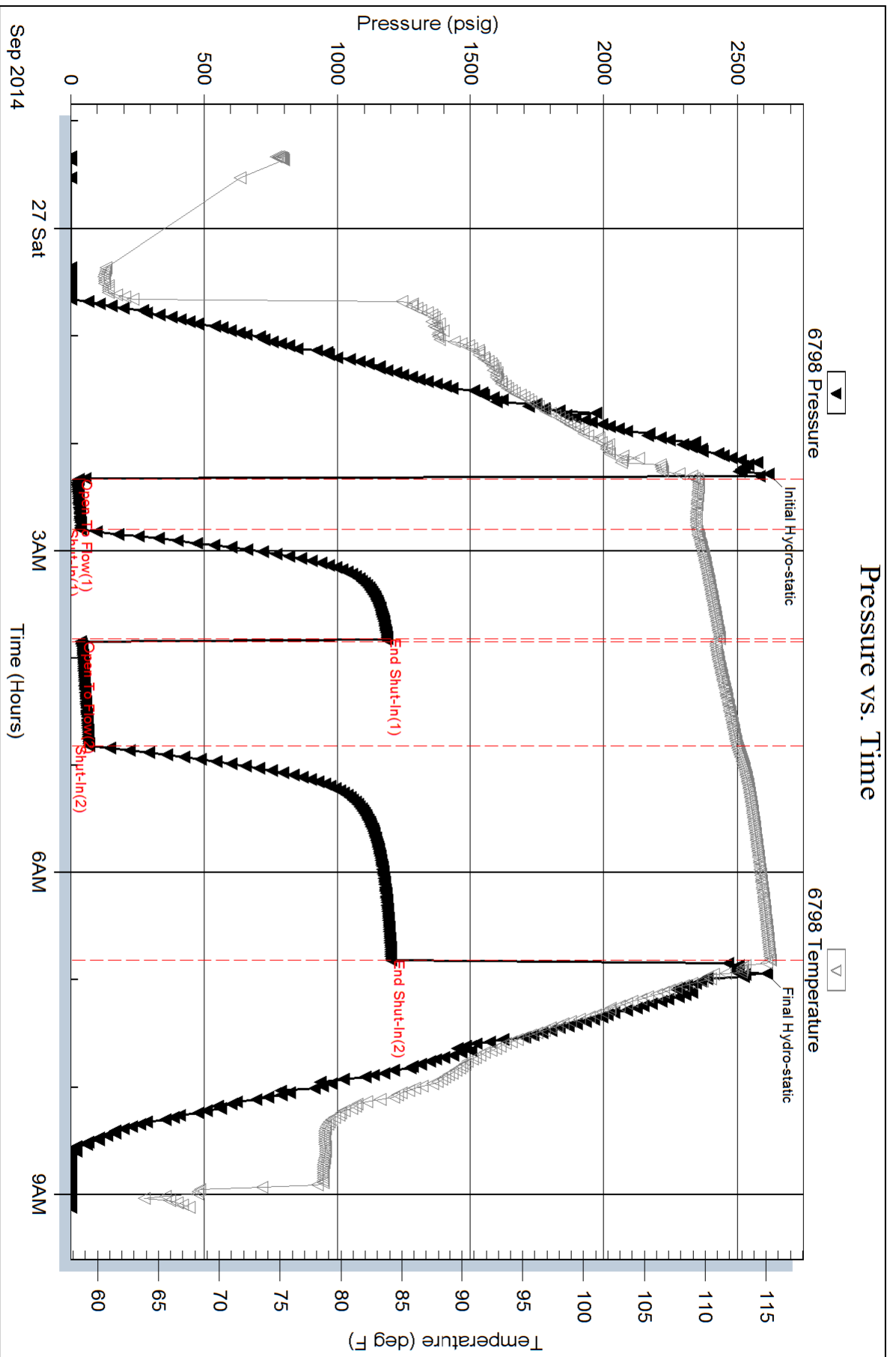
Serial #: 6798

Inside

Vincent Oil Corporation

2-27 Sandy Land

DST Test Number: 4



Trilobite Testing, Inc

Ref. No: 57768

Printed: 2014.09.27 @ 11:08:34

Serial #: 8367

Outside Vincent Oil Corporation

2-27 Sandy Land

DST Test Number: 4

