

GEOLOGIST'S REPORT

DRILLING TIME AND SAMPLE LOG

BACH OIL PRODUCTION

WELL: DOROTHY #1

**LOC.:990' FNL & 2310' FEL
SEC. 9-2-19W
PHILLIPS COUNTY, KANSAS
API: 15-147-20748-00-00**

**DRILLING CONTR.: MURFIN RIG #24
SPUD: 09-29-14 COMP: 10-03-14
MUD UP: 2650' TYPE MUD: CHEM.
DRILL TIME: 3050 to' RTD
RTD: 3620' LTD:3620'
SAMPLES SAVED: 3100'-RTD
GEOLOGIST: ROBERT J. PETERSEN**

ELEVATION

KB: 2235
GL: 2230
LOG MEASURED
FROM: KB

SURFACE CASING

20# 8 5/8 " Casing set @ 220' w/175 SX

PRODUCTION CASING

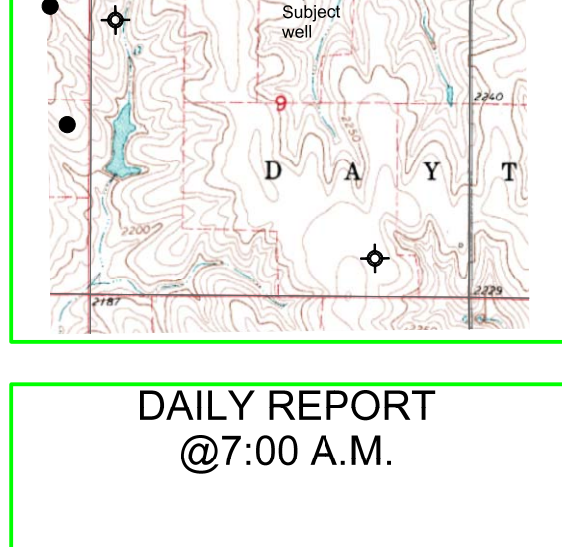
D&A

WELL LOG SURVEYS

CDL/DIL

ELECTRIC LOG TOPS

FORMATION	DEPTH	DATUM	POSITION
Stone Corral	1843	+392	-16
Base Stone Corral	1845	+390	-3
Topeka	3187	-952	-14
Heebner	3397	-1162	-15
Toronto	3427	-1192	-16
Lansing	3444	-1209	-15
Muncie	3553	-1318	-15
I Zone	3589	-1354	-16
LTD	3620	-1385	N/A



REFERENCE WELL:

Bach Brands #1
160' FSL/830' FEL
4-2-19W

REMARKS AND RECOMMENDATIONS

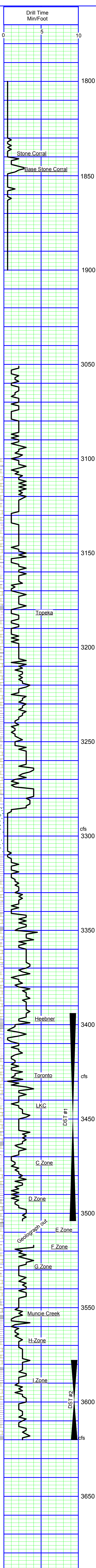
This well was plugged and abandoned by the operator.

Respectfully submitted,

Robert J. Petersen
Robert J. Petersen

DAILY REPORT @7:00 A.M.

09-29-14 MIRU/SPUD
09-30-14 391'
10-1-14 2565'
10-2-14 3345'
10-3-14 3510'
RTD @ 11:58 AM 3617'



SAMPLE DESCRIPTION

LS; Cream, fine crystalline, chalky +SD; Gray, fine grained (3110)
SH; Red/gray (3120)
LS; Lt gray/cream, dense, cherty, sl dolo (3130)
LS; Cream/gray, fine crystalline, mottled, sl dolo, cherty (3140-3150)
SH; Red, silty-sandy (3150)
SH; Dark gray (3160)
LS; Cream/gray, fine crystalline, dense, foss, mottled (3160)
SH; Gray, sandy (3170)
LS; Tan, fine crystalline to dense, foss (3180)
SH; Gray, silty (3180)
LS; Cream/gray, fine crystalline to dense, fossil mottled, chalky, cherty (3190)
SH; Gray, sandy, gummy (3200)
SH; Dark gray (3210)
LS; Cream/gray, dense, foss, chalk, trace dead stain (3230)
LS; Cream/tan, fine crystalline, foss, chalky, poor moldic por (3240)
SH; Gray (3250)
LS; Cream/tan, very chalky (3250-3260)
SH; Red/gray (3260-3270)
LS; Cream/tan, fine crystalline, foss, cherty, sl dolo (3270)
LS; Cream/tan, fine crystalline, foss, cherty (white-foss-blocky) (3296/15')
SH; Dark gray (3296/15')
SD; Blue-gray, fine grained, calc (3296/15')
SD; Tan, fine grained, friable to well-cemented (3296/30')
SD; Tan, fine grained, friable to well-cemented + Chert; Tan, angular (3310-3320)
SD; Red, fine grained, friable, calcareous + SH; Red (3330)
SH; Red, silty-sandy (3340)
LS; Cream, fine crystalline, foss, chalky (3340)
SH; Gray, sandy (3340)
LS; Cream/gray, fine crystalline, chalky, dolo (3340/30')
SH; Black (3360)
LS; Cream, fine crystalline, foss, chalky, trace dead stain, cherty (orange-blocky)(3360)
LS; Cream/gray, fine crystalline to dense, foss, cherty, trace stain (3380)
SH; Red (3380)
SH; Dark gray(3390)
LS; Cream/gray, fine crystalline to dense, foss, cherty (3390)
LS; Cream/lt gray, fine crystalline to dense, foss, chalky (3400)
LS; Gray, fine crystalline, foss, chalky (3410)
SH; Black (3410)
LS; Tan, fine crystalline to dense, foss, hard (3420)
SH; Red + SD; Gray/brown, fine grained, friable (3430)
SH; Red, silty + SD; Gray/brown, fine grained, friable (3440)
LS; Cream, fine crystalline, foss/ool, granular, chalky (white-soft), poor moldic por + Chert, Orange, blocky to angular, ssfo, faint odor, light to med brown stain on dry (3440)
LS; Gray, dense, foss, cherty (3440/15')
LS; Cream, fine crystalline, ool-granular, fair moldic por, ssfo, odor (3450-3460)
LS; Cream/gray, fine crystalline, foss, chalky (3460)
LS; Cream, fine crystalline to dense, sl foss, chalky (3470)
LS; Gray, dense, foss, mottled/ Chert; Black (3480)
SH; Red, silty-sandy (3490)
LS; Cream, fine crystalline, foss, granular in part w/fair to good moldic por, Chert; Tan/gray, foss, sfo, odor, gas bubbles, lt to med stain on dry (3490)
LS; Cream, fine crystalline to dense, sl foss, cherty (3500)
SH; Red (3500)
LS; Cream, fine crystalline, foss, chalky (3504/15')
LS; Lt gray/bluish gray, fine crystalline to dense, foss, chalky, cherty (3504/30')
SH; Blue-gray, sandy/SH; Black (3504/60')
LS; Cream, fine crystalline, ool-gran, trace intercrystalline por, tr stain (3520)
LS; Cream, fine crystalline, ool-chalky, soft (3530)
LS; Cream, fine crystalline to dense, chalky, cherty, sl dolo (3540)
SH; Maroon/gray (3540)
LS; Cream, fine crystalline to dense, foss, chalky, sl dolo, granular in part, tr stain (3550)
LS; Cream/lt gray, foss, chalky-mealy, trace stain (3560)
LS; Tan/gray, fine crystalline to dense, foss, mottled, cherty (3570)
SH; Black (3570)
LS; Tan, dense, foss + SH; Red, sandy (3580)
LS; Cream/white, fine crystalline, chalky (3580-3590)
LS; Lt gray, fine crystalline to dense, foss (3590-3600)
SH; Red (3600)
LS; Cream, fine crystalline, foss, gran w/poor moldic por, ssfo (3600)cherty, w/fair moldic por, gsfo, odor, med stain on dry (3610)
LS; Cream, fine crystalline to dense, foss, gsfo, odor, poor ppt por, dark sat dry (3610)
SH; Red, silty (3620)
LS; Cream/tan, fine crystalline to dense, foss, chalky, sl dolo (3620/30')

DST #1
3394-3504'
45-IF-Built to 5 3/4"
45-ISI-No Return
30-FF-Built to 1"
45-FSI-No Return
Recovered: 166' M,
with oil spots, 100% m
SIP: 1050-1039#
FP: 46-90/91-120#

DST #1
3578-3620'
45-45-30-45"
IF: 1/4"
FF: None
Recovered: 5' Mud w/oil spots
SIP: 518-511#
FP: 18-20/21-22#