

# GEOLOGIC REPORT

## DAVID J. GOLDAK

WICHITA, KANSAS  
Scale 1:240 (5"=100') Imperial  
Measured Depth Log

Well Name: Winderlin #1-8  
Location: Section 8 - T17S - R32W  
License Number: API: 15-171-21107  
Spud Date: 11 / 10 / 2014  
Surface Coordinates: 335' FSL and 425' FWL  
NE - SW - SW - SW  
Region: Scott Co., KS  
Drilling Completed: 11 / 19 / 2014  
Bottom Hole Coordinates:  
Ground Elevation (ft): 2976' K.B. Elevation (ft): 2981'  
Logged Interval (ft): 3700' To: 4726' Total Depth (ft): 4726'  
Formation: Mississippian - St Louis  
Type of Drilling Fluid: Chemical - Mud-Co

Printed by MUD.LOG from WellSight Systems 1-800-447-1534 www.WellSight.com

### OPERATOR

Company: Stelbar Oil Corporation  
Address: 1625 N. Waterfront Pkwy., Suite 200  
Wichita, Kansas 67206-6602

### GEOLOGIST

Name: David J. Goldak  
Company: D. J. GOLDAK, INC.  
Address: 155 N. Market, Suite 710  
Wichita, Kansas 67202

### General Info

CONTRACTOR: WW Drilling, Rig #8

#### BIT RECORD:

No.	Size	Make	Jets	Out	Feet	Hours
1	12-1/4	Smith-?	15-14-14	344	344	4.25
2	7-7/8	Smith-F27	15-14-14	4421	4077	118.50
2	7-7/8	Smith-F27	15-14-14	4726	305	25.25

SURVEYS: 344'-0.50, 4421'-0.50, 4726'-0.75

#### GENERAL DRILLING & PUMP INFORMATION:

Drilling with 7 stands of collars (6.25"x2.25"): 426.84'  
Drilling with 35,000-36,000 lbs on bit and 80-85 RPM.  
Pumping 57 S/M; 7.35 B/M; 800-900 psi at the standpipe.

## Daily Status

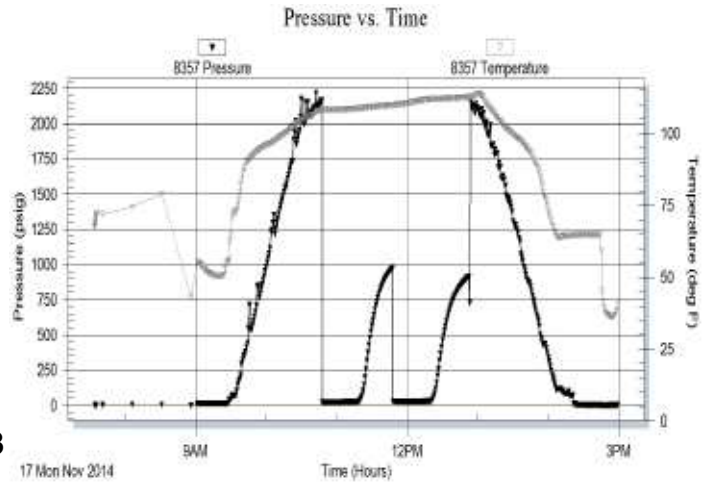
11/10/14 - Spud at 2:15 PM; Set 8-5/8" csg at 343'  
 11/11/14 - 394' Drilling  
 11/12/14 - 2,275' Drilling  
 11/13/14 - 3,030' Drilling; Displace mud @ 3,355'  
 11/14/14 - 3,488' Drilling  
 11/15/14 - 3,936' Drilling  
 11/16/14 - 4,250' Drilling; Short trip @ 4,272'  
 11/17/14 - 4,421' TOH for DST #1  
 11/18/14 - 4,564' Drilling; RTD 4,726' @ 10:35 PM  
 11/19/14 - 4,726' Logging

**DST #1: 4,365' - 4,421' (Marmaton)**  
 30" - 30" - 30" - 30"

**IF: Surface blow building to 3/4 inch**  
**ISI: No blow back**  
**FF: No blow**  
**FSI: No blow back**

**RECOVERY: 10' Total Fluid, consisting of:**  
 10' OSM (100% M)  
**Sampler: 2000 ml OSM @ 125 psi**

**SIP: 980-918; FP: 19-24, 25-28; HP: 2162-2146; BHT: 113**



## ROCK TYPES

	Anhy
	Bent
	Brec
	Cht
	Clyst
	Coal
	Congl
	Dol

	Gyp
	Igne
	Lmst
	Meta
	Mrlst
	Salt
	Shale
	Shcol

	Shgy
	Sltst
	Ss
	Till
	Carb sh
	Dol
	Dtd
	Gry sh

	Sandylms
	Shale
	Sltstn
	Shlyslts
	SltysH
	Lms

### ACCESSORIES

#### MINERAL

- Anhy
- Arggrn
- Arg
- Bent
- Bit
- Brecfrag
- Calc
- Carb
- Chtdk
- Chtlt
- Dol
- Feldspar
- Ferrpel
- Ferr
- Glau
- Gyp
- Hvymin
- Kaol
- Marl
- Minxl
- Nodule
- Phos
- Pyr



- Salt
- Sandy
- Silt
- Sil
- Sulphur
- Tuff
- Chlorite
- Dol
- Sand
- Stly

#### FOSSIL

- Algae
- Amph
- Belm
- Bioclst
- Brach
- Bryozoa
- Cephal
- Coral
- Crin
- Echin
- Fish
- Foram



- Fossil
- Gastro
- Oolite
- Ostra
- Pelec
- Pellet
- Pisolite
- Plant
- Strom
- Fuss
- Oomold

#### STRINGER

- Anhy
- Arg
- Bent
- Coal
- Dol
- Gyp
- Ls
- Mrst
- Sltstrg
- Ssstrg
- Carbsh



- Clystn
- Dol
- Grysh
- Gryslt
- Lms
- Sandylms
- Sh
- Sltstn

#### TEXTURE

- Boundst
- Chalky
- Cryxln
- Earthy
- Finexln
- Grainst
- Lithogr
- Microxln
- Mudst
- Packst
- Wackest

### OTHER SYMBOLS

#### POROSITY TYPE

- Earthy
- Fenest
- Fracture
- Inter
- Moldic
- Organic
- Pinpoint
- Vuggy

#### SORTING

- Well
- Moderate
- Poor

#### ROUNDING

- Rounded
- Subrnd
- Subang
- Angular

#### OIL SHOWS

- Even
- Spotted
- Ques
- Dead
- Gas show

#### INTERVALS

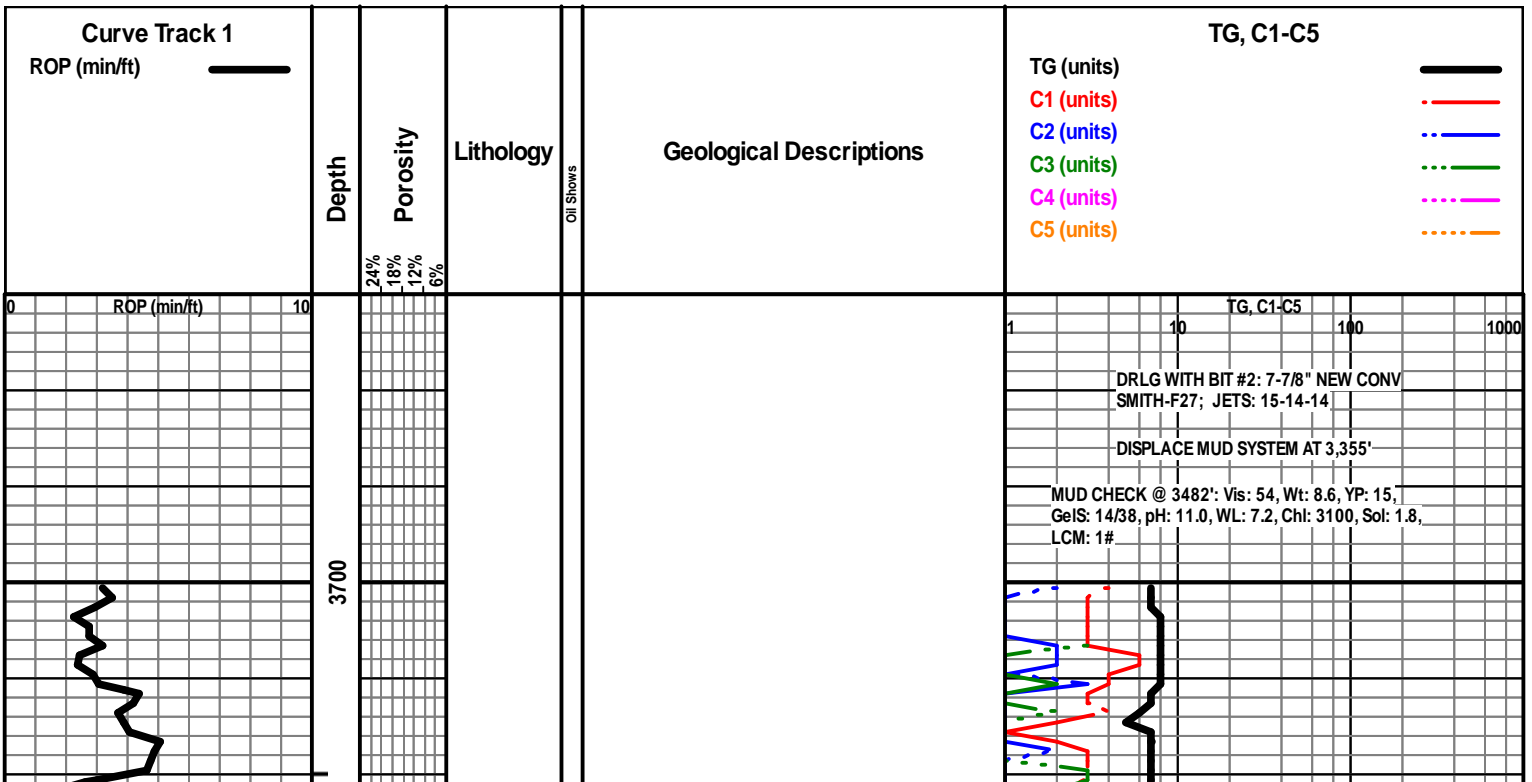
- Core
- Dst

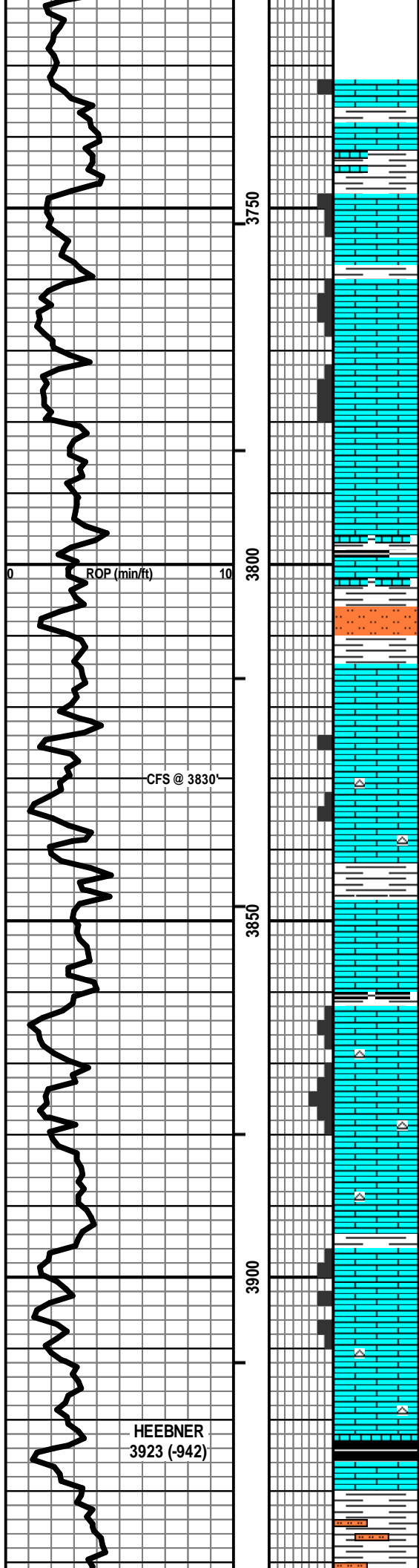


- Dst\_1\_t
- Dst\_1\_b
- Dst

#### EVENTS

- Rft
- Sidewall
- Conn





LS - TAN / GY / BRN / SCAT CRM, MOT IN PT, VF / F XLN, SL FOSS, TR INTXLN POR, CHKY IN PT, PRED DNS, NS W/ SH - MED / DK GY

LS - TAN / CRM, F XLN, FOSS IN PT, P/F PPT + INTXLN POR, NS W/ SH - GY

LS - TAN / CRM, F XLN, FOSS, OOL IN PT, F PPT + VUG POR, F / G INTXLN POR IN PT, SCAT CHKY, NS

LS - TAN / SCAT BRN, VF / F XLN, FOSS + OOL IN PT, SCAT CHKY, PRED DNS, NS

SH + SLTST - LT / MED GY W/ SCAT LS - GY, VF XLN, SL FOSS, PRED DNS, NS

LS - CRM / TAN, VF / F XLN, FNLY OOL IN PT, P/F OOM + VUG POR IN PT, PRED DNS, NS

LS - CRM / TAN, F XLN, FOSS, OOL IN PT, F INTXLN + PPT + VUG POR, NS W/ CHT - GY / WHT / CRM

LS - TAN / BRN, VF / F XLN, SL FOSS, SUBCHKY IN PT, PRED DNS, NS W/ SH - GY / SCAT GRN

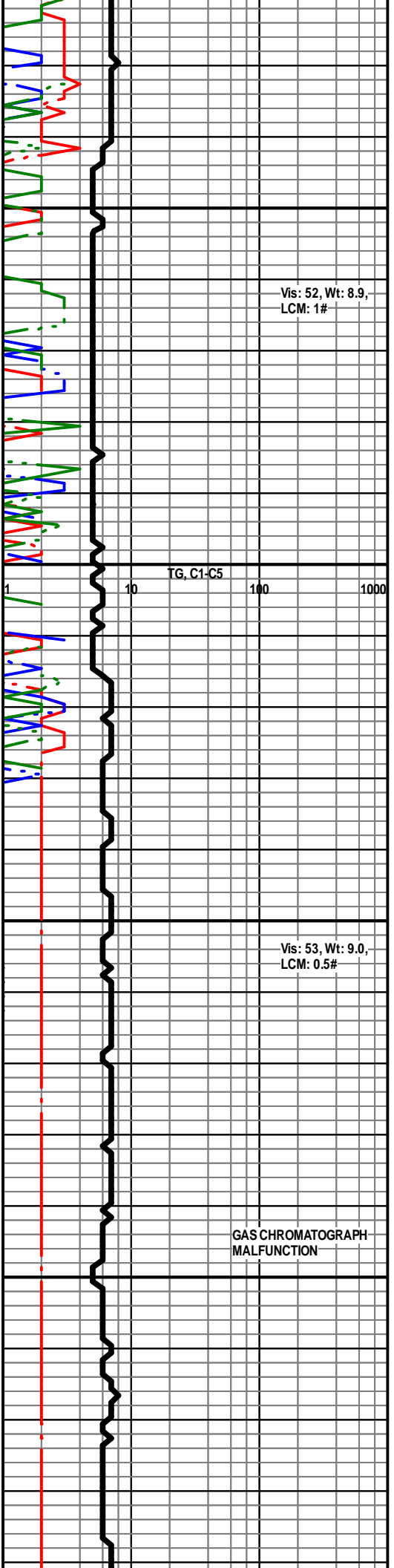
LS - CRM / TAN / SCAT GY, MOT IN PT, VF / F XLN, FOSS IN PT, F / SCAT G INTXLN + PPT POR, TR VUG POR, NS W/ SCAT CHT - WHT / LT GY

LS - TAN / BRN / CRM, VF / F XLN, FOSS IN PT, SL OOL, PRED DNS, NS W/ CHT - LT GY / WHT

LS - CRM / TAN, F XLN, FOSS, P/F INTXLN + FOSSMOLD POR, NS

LS - TAN / BRN / SCAT GY, VF / F XLN, FOSS IN PT, SUBCHKY IN PT, PRED DNS, NS W/ SCAT CHT - WHT / LT GY

SH - BLK, CARB W/ LS - TAN / BRN, F XLN, SL FOSS, PRED DNS, NS W/ SH - GY / GRN, SLTY IN PT



Vis: 52, Wt: 8.9, LCM: 1#

TG, C1-C5 1 10 100 1000

Vis: 53, Wt: 9.0, LCM: 0.5#

GAS CHROMATOGRAPH MALFUNCTION

HEEBNER 3923 (-942)

TORONTO  
3944 (-963)

LANSING  
3967 (-986)

MUNCIE CREEK  
4149 (-1168)

3950

4000

4050

4100

4150

LS - CRM, VF / F XLN, OOL + FOSS, P / TR F INTXLN /  
INTPART POR, CHKY IN PT / DNS, NS W/ SCAT CHT -  
LT GY / WHT

LS - TAN / CRM, F XLN, OOL IN PT, F / G OOM POR IN PT,  
P / F INTXLN POR, CHKY IN PT / DNS, NS

LS - CRM / TAN / SCAT GY, VF / F XLN, TR FOSS, CHKY  
IN PT, PRED DNS, NS

LS - TAN / BRN, VF / F XLN, OOL, PRED DNS, NS W/ SH  
- RED / GRN / GY / SCAT BLK

LS - CRM / TAN, F XLN, OOL + FOSS IN PT, P / SCAT F  
INTXLN + PPT POR, CHKY IN PT / DNS, TR DEAD STN,  
PRED NS, NO ODOR

LS - CRM / TAN, F XLN, SCAT M REXLN CALC, OOL, P /  
F INTOOL + VUG POR, CHKY IN PT, NS

LS - TAN / CRM, AS ABOVE, SCAT P OOM POR AS  
WELL, NS

LS - TAN / BRN / CRM, VF / F XLN, OOL + FOSS IN PT, P /  
F INTPART + PPT POR IN PT, TR VUG POR, SUBCHKY +  
DNS IN PT, NS

LS - TAN / CRM / SCAT GY, VF / F XLN, SCAT REXLN  
CALC, SL FOSS, SCAT OOL, PRED DNS, NS

LS - CRM / TAN, VF / F XLN, SCAT OOL, TR P OOM +  
INTPART POR, CHKY IN PT, PRED DNS, NS

LS - AS ABOVE, PRED CHKY / DNS W/ LS - LT GY/  
CRM, F / M XLN, OOL IN PT, P / F VUG POR, TR OOM  
POR, SCAT CHKY, NS

SH - BLK, CARB W/ LS - TAN / BRN, F XLN, SCAT OOL,  
PRED DNS, NS

Vis: 56, Wt: 9.0,  
YP: 19, GeIS: 14/41,  
pH: 10.0, WL: 7.2,  
Ch: 3400, Sol: 4.8,  
LCM: 0.5#

TG, C1-C5

GAS EXTRACTOR FAILURE;  
REPLACE EXTRACTOR; GAS TEST  
GOOD; OPERATING PROPERLY

Vis: 55, Wt: 9.2,  
LCM: 0.5#

Vis: 57, Wt: 9.2,  
LCM: 0.5#

A

B

C

D

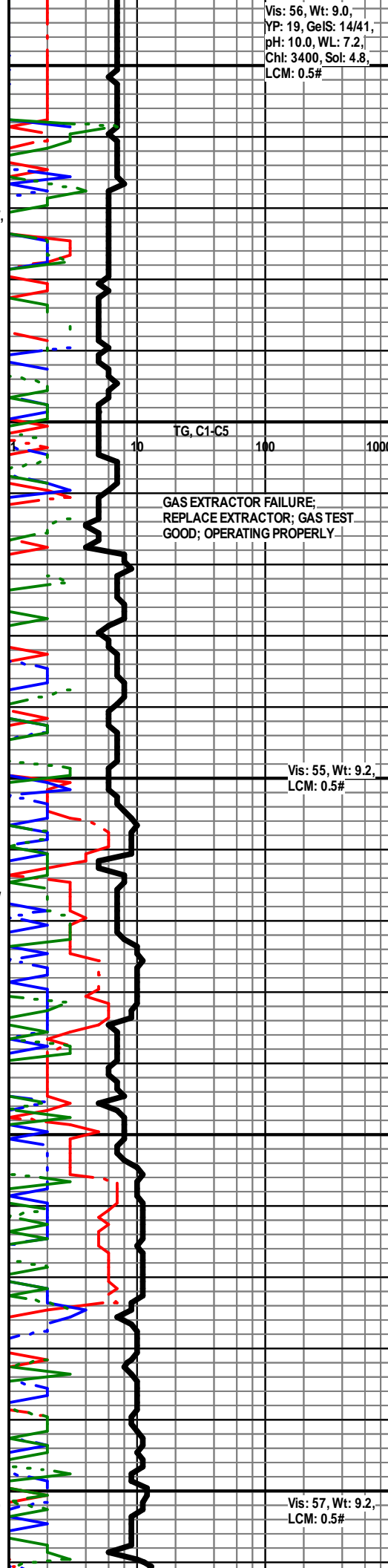
E

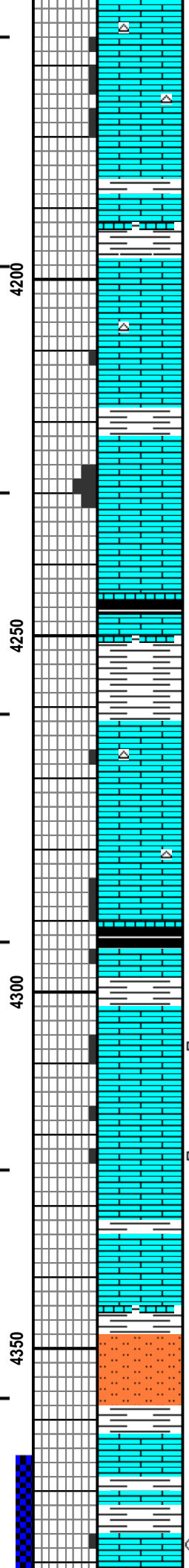
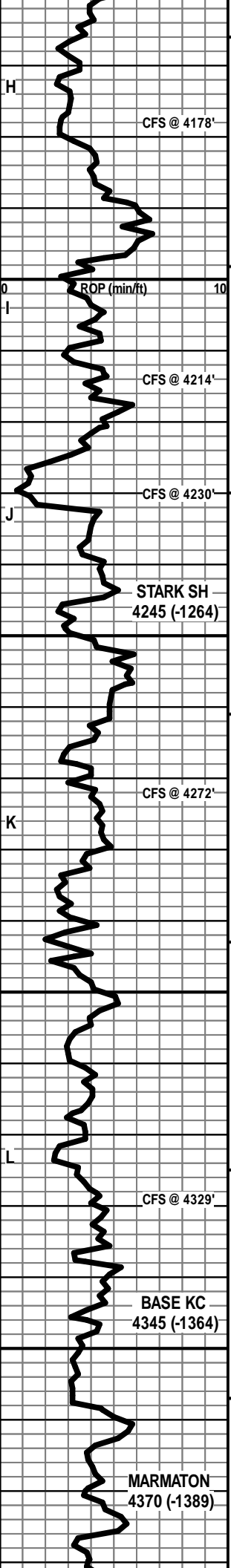
F

G

ROP (min/ft)

CFS @ 4018'





LS - CRM / TAN, VF / F XLN, SCAT REXLN CALC, OOL IN PT, P / TR F INTXLN + VUG POR, SUBCHKY IN PT / DNS, TR SPTY DEAD STN, PRED NS, NO ODOR W / CHT - WHT / GY / TAN

LS - BRN, F XLN, SL FOSS, DNS, NS W / SH - GY / GRN / BRN

LS - TAN / CRM, VF / F XLN, OOL + FOSS IN PT, SCAT P INTPART POR, SCAT CHKY, PRED DNS, NS W / SCAT CHT - LT GY / WHT

LS - LT GY / CRM, F XLN, OOL, G OOM POR, F / G INTXLN POR, NS

LS - TAN / GY, VF / F XLN, SL OOL + FOSS, PRED DNS, NS W / SH - BLK, CARB

LS - TAN / BRN, F / M XLN, SL FOSS, PRED DNS, NS W / SH - GY

LS - CRM / GY / TAN, MOT IN PT, VF / F XLN, OOL IN PT, SCAT P INTXLN / INTOOL POR, SUBCHKY IN PT / DNS, NS W / SCAT CHT - WHT / LT GY

LS - AS ABOVE, SUBCHKY / DNS, NS W / LS - TAN, VF / F XLN, OOL + FOSS, SCAT P INTXLN POR, TR P VUG POR, NS W / SCAT CHT - GY / WHT / TAN

SH - BLK, CARB W / LS - TAN, SL FOSS, TR P VUG + PPT POR, PRED DNS, NS

LS - TAN / GY / CRM, MOT IN PT, F XLN, SCAT FOSS + OOL, SCAT P / TR F VUG + INTXLN POR, TR GB, SCAT GILS, 2 PCES SFO, MOD AMT BARR POR, NO ODOR, SCAT SPTY DEAD STN, TR SPTY LIVE STN

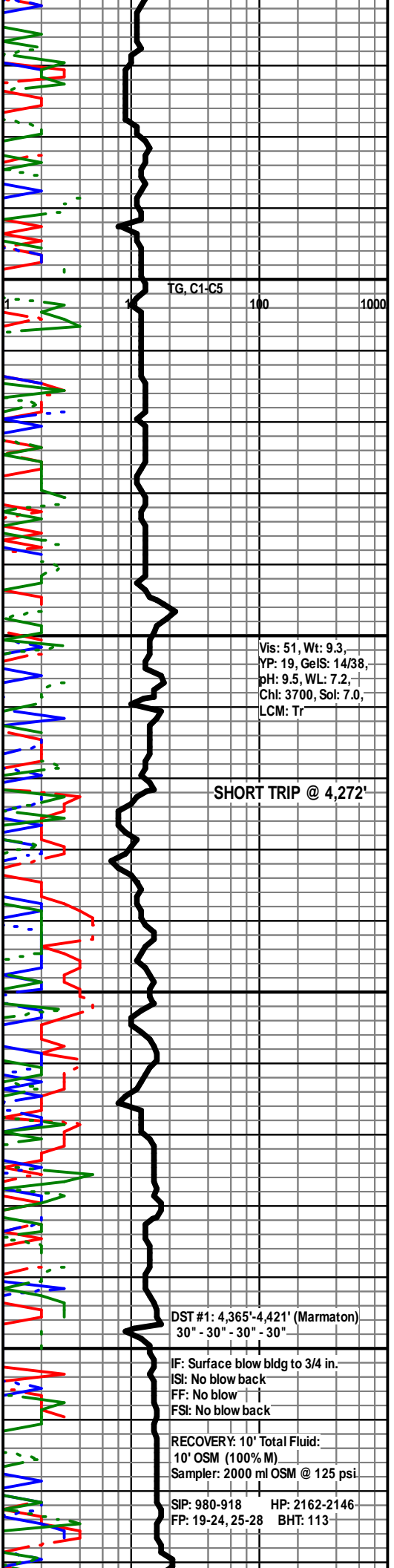
LS - TAN / CRM, F XLN, FOSS IN PT, SCAT OOL, SCAT P / TR F INTXLN + PPT POR, TR ASPH, SL S GILS, NO ODOR, SCAT SPTY DEAD STN

LS - CRM / TAN / SCAT GY, F XLN, OOL + FOSS IN PT, PRED DNS, NS

SLTST - GY / GRN W / SH - PRED GY

LS - TAN / BRN, F / M XLN, FOSS IN PT, SCAT OOL, PRED DNS, TR SPTY DEAD STN, PRED NS, NO ODOR

LS - TAN / CRM, F XLN, SL FOSS, TR P INTXLN POR, TR GB, VSS OILY FILM, NSFO, NO ODOR



Vis: 51, Wt: 9.3,  
YP: 19, GeIS: 14/38,  
pH: 9.5, WL: 7.2,  
Chl: 3700, Sol: 7.0,  
LCM: Tr

**SHORT TRIP @ 4,272'**

DST #1: 4,365'-4,421' (Marmaton)  
30" - 30" - 30" - 30"

IF: Surface blow bldg to 3/4 in.  
ISI: No blow back  
FF: No blow  
FSI: No blow back

RECOVERY: 10' Total Fluid:  
10' OSM (100% M)  
Sampler: 2000 ml OSM @ 125 psi

SIP: 980-918 HP: 2162-2146  
FP: 19-24, 25-28 BHT: 113

