



Musgrove

Petroleum Geology
212 Main Street, Claflin KS

Geologist's Report

Company: Jason Oil Company, LLC
 Lease: Strachan #3
 Field: Hall-Gurney
 Surface Location: 920' FNL & 1420' FWL
 Sec: 22 Twp: 14S Rge: 13W
 County: Russell State: Kansas
 GL: 1784' KB: 1793'

Contractor: Southwind Drilling Rig #8
 Spud: 11/16/14 Comp: 11/21/14
 RTD: 3325' LTD: 3325'
 Mud Up: +/- 2300' Mud Type: Chemical Displaced

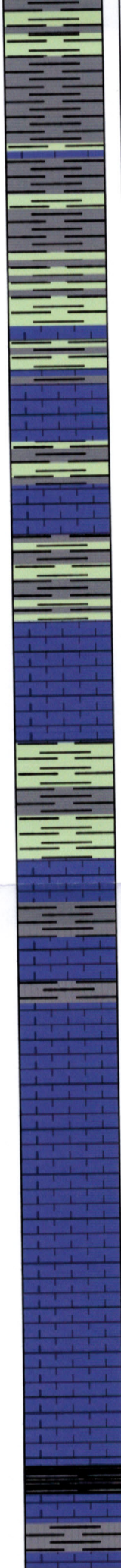
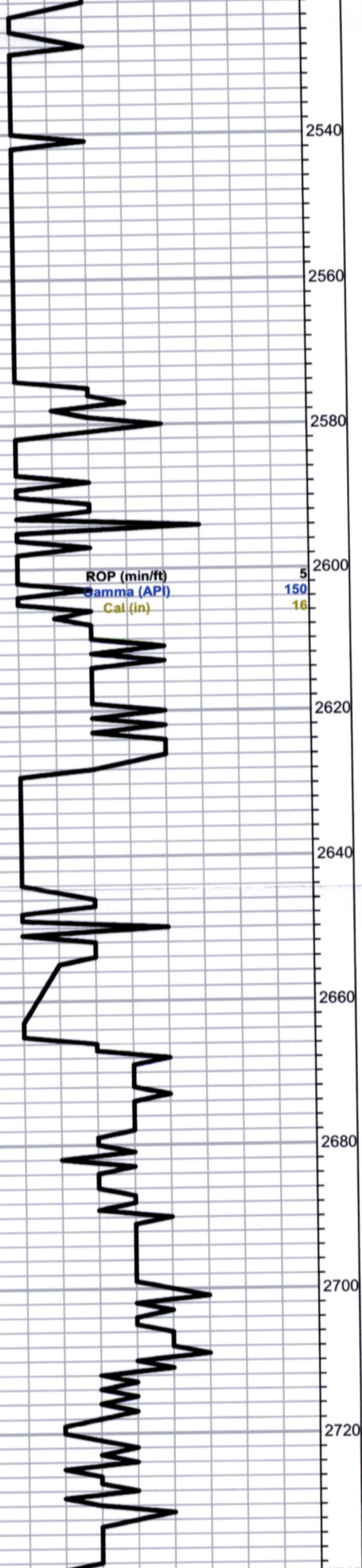
Drilling Time Kept From: 2200' to RTD
 Samples Saved From: 2300' to RTD
 Samples Examined: 2300' to RTD
 Geological Supervision: 2315' to RTD
 Geologist on Well: Kurt Talbott and Clint Musgrove

Surface Casing: 8 5/8"@ 431'
 Production Casing: 5 1/2" @

Wireline Logs: By Gemini: CDL/CNL, DIL, MEL

Well Comparison

FORMATION	WELL BEING DRILLED		OFFSET		OFFSET	
	LD	LD SS	MD	SS	LD	SS
ANHYDRITE	732	1061	750	1059		
BASE ANHYDRITE	768	1025				
BRAND HAVEN	2294	-501	2310	-512		
EAST TARKIO SAND			2324	-536	2252	-508
TARKIO LIME	2365	-572	2381	-570	2311	-587
DOPEKA	2640	-847	2656	-845	2584	-840



Ls- A/A
Shale- gry/grn-soft

Shale- A/A silty

Howard 2574.0 (-781.0)
-781.0

Ls-crm/lt gry, fxln, granular, fossils,
poor vis por, chalky
Grey Shale Abundant

Ls-gry/tan, fxln, fossils, poor scattered
por, chalky
Shale A/A

Ls-grytan, fxln, fossils, poor scatered
iner xln por, Chalky

Shale-gry-soft

Topeka 2643.0 (-850.0)
-847.0

Ls-crm/gry, fxln, few fossils, poor vis
por, cherty

Ls-crm/tan, fxln, few fossils, poor vis
por, cherty in part,

Shale-gry/blk slightly silty

Ls-tan/gry, fxln, fossils, poor scattered
iner xln por, chalky

A/A Cherty in part

Ls-tan/gry, fxln, ool/fossils, cherty in
part, poor vis por

Trace black carbon shale

0	Total Gas (units)	100
0	C1 (units)	100
0	C2 (units)	100
0	C3 (units)	100
0	C4 (units)	100