

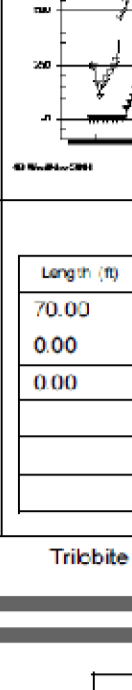
Well Name: J-Bar #1
API: 15-185-23909-00-00
Location: SE-NW-NW-SE of Section 22-22s-11w - Stafford County, KS
License Number: KC-LLC# 5614
Spud Date: 11/15/2014
Region: Mid-Continent
Drilling Completed: 11/21/2014
Surface Coordinates: (2175' FSL & 2235' FEL)
Bottom Hole: Same as Surface Coordinates
Coordinates: Same as Surface Coordinates
Ground Elevation (ft): 1802'
Logged Interval (ft): 2600'
To: K.B. Elevation (ft): 1812'
Formation: Arbuclle
Total Depth (ft): 3690'
Type of Drilling Fluid: Chemical Drispac (AMU's Mud & Chemical)
 Printed by Drilling Log from WellSight Systems 1-800-447-1534 www.WellSight.com

OPERATOR

Company: Hutchinson Oil Company
Address: P.O. Box #521
 Hutchinson, KS 67037-0521

GEOLOGIST

Name: Eli Felts & Jeffrey A. Burk, Consulting Petroleum Geologists
Company: PETERRA Energy Services
Address: 110 S2014 Main, Suite #510
 Wichita, KS 67202
Phone: (316) 269-2015



DRILL STEM TEST REPORT

Hutchinson Oil Co
 22-22s-11w-Stafford
J-Bar#1
 Job Ticket: 60294 DST#1
 Test Start: 2014.11.19 @ 01:56:00
 Attn: Eli Felts & Jeff Burk

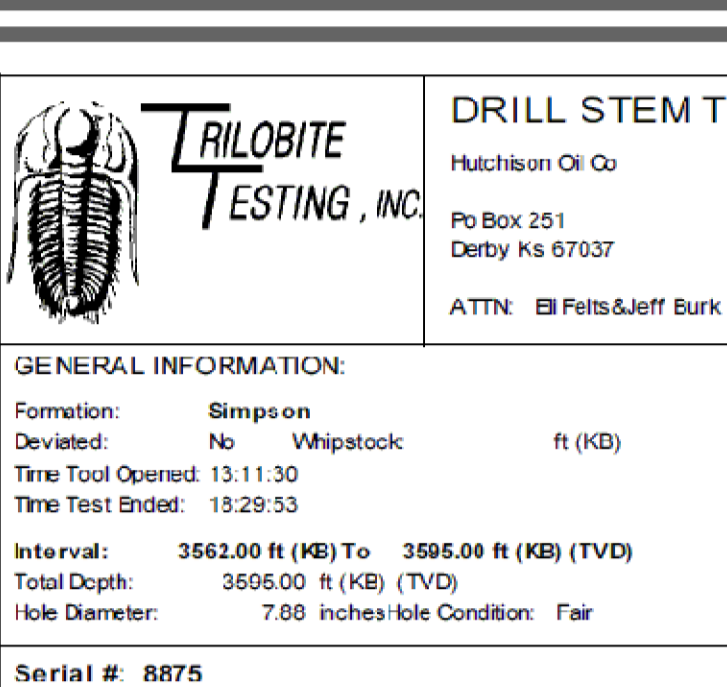
GENERAL INFORMATION:

Formation: Lansing L
Unvented: No
Whipstock: ft (KB)
Time Tool Opened: 03:31:30
Time Test Ended: 06:07:30
Interval: 3463.00 ft (KB) To 3490.00 ft (KB) (TVD)
Total Depth: 3463.00 ft (KB) (TVD)
Hole Diameter: 7.88 inches Hole Condition: Fair

Test Type: Conventional Bottom Hole (Initial)
Tester: Dustin Ellis
Unit No: S2-Grand Bend-85
Reference Elevations: 1812.00 ft (KB)
 1803.00 ft (CF)
 KB to GRFCF: 9.00 ft

Serial #: 6839
Press@RunDepth: 61.83 psig @ ft (KB)
Start Date: 2014.11.19
End Date: 2014.11.20
Capacity: 5000.00 psig
Time On Btm: 2014.11.20 @ 02:54:00
Time Off Btm: 2014.11.19 @ 06:31:30

TEST COMMENT: 1st Open 30 min Weak building blow built to 1.75 inches.
 1st Shut in 45 min No blow back
 2nd Open 60 min Weak building blow built to 1.25 inches.
 2nd Shut in 45 min. No blow back



PRESSURE SUMMARY

Time (Min)	Pressure (psi)	Temp (deg F)	Annotation
0	1723.93	97.75	Initial Hydro-static
1	291.07	97.75	Open To Flow (1)
32	56.60	98.45	Shut In (1)
34	1213.08	100.34	End Shut-in (1)
75	42.08	100.56	Open To Flow (2)
134	61.83	102.19	Shut In (2)
136	1133.42	103.31	End Shut-in (2)
181	1616.59	103.48	Final Hydro-static

Recovery

Lamch (ft)	Oil specified wt (ppm)	Volume (bbl)
70.03	Oil specified wt water mud	0.34
0.00	80% Water 20% Mud	0.00
0.00	Chlorides 42,000	0.00

Gas Rates

Core (inches)	Pressure (psig)	Gas Rate (Mcf/D)

DRILL STEM TEST REPORT

Hutchinson Oil Co
 22-22s-11w-Stafford
J-Bar#1
 Job Ticket: 60296 DST#2
 Test Start: 2014.11.20 @ 07:20:00
 Attn: Eli Felts & Jeff Burk

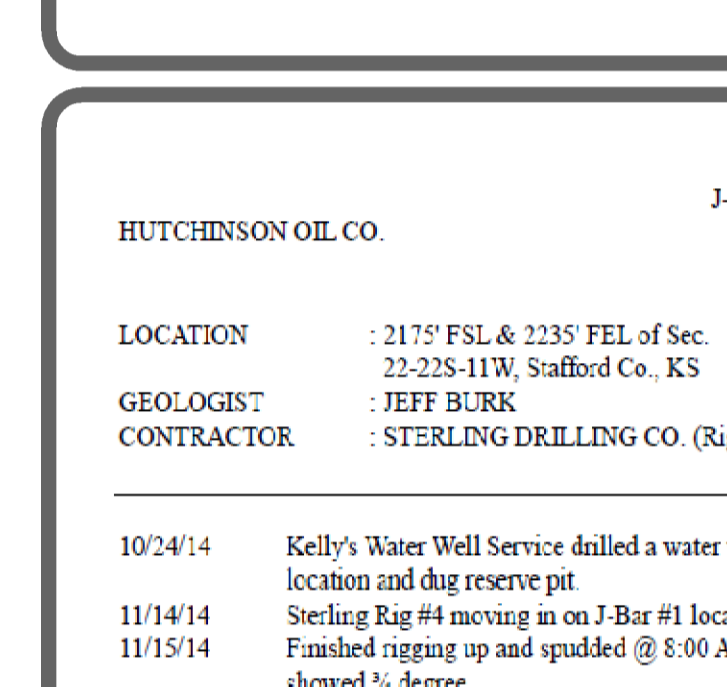
GENERAL INFORMATION:

Formation: Viola
Unvented: No
Whipstock: ft (KB)
Time Tool Opened: 06:54:30
Time Test Ended: 15:37:30
Interval: 3517.00 ft (KB) To 3663.00 ft (KB) (TVD)
Total Depth: 3563.00 ft (KB) (TVD)
Hole Diameter: 7.88 inches Hole Condition: Fair

Test Type: Conventional Bottom Hole (Initial)
Tester: Dustin Ellis
Unit No: S2-Grand Bend-85
Reference Elevations: 1812.00 ft (KB)
 1803.00 ft (CF)
 KB to GRFCF: 9.00 ft

Serial #: 6839
Press@RunDepth: 1038.98 psig @ ft (KB)
Start Date: 2014.11.20
End Date: 2014.11.20
Capacity: 5000.00 psig
Time On Btm: 2014.11.20 @ 02:54:00
Time Off Btm: 2014.11.20 @ 11:56:30

TEST COMMENT: Initial Open 30 min Weak blow built to 1.75 inches.
 Initial Shut in 45 min No blow back
 Final Flow 60 min Weak building blow built to 1.5 inches
 Final Shut in 45 min. No blow back



PRESSURE SUMMARY

Time (Min)	Pressure (psi)	Temp (deg F)	Annotation
0	1767.81	98.17	Initial Hydro-static
1	42.43	98.66	Open To Flow (1)
32	153.30	98.20	Shut In (1)
34	1153.30	97.53	Shut In (1)
91	1196.13	102.63	Open To Flow (2)
91	63.92	102.63	Shut-in (2)
136	1086.98	104.40	End Shut-in (2)
182	1454.40	105.48	End Shut-in (2)
183	1702.91	105.01	Final Hydro-static

Recovery

Lamch (ft)	Oil specified wt (ppm)	Volume (bbl)
12.00	Oil specified wt 100% Mud	0.07

Gas Rates

Core (inches)	Pressure (psig)	Gas Rate (Mcf/D)

DRILL STEM TEST REPORT

Hutchinson Oil Co
 22-22s-11w-Stafford
J-Bar#1
 Job Ticket: 60296 DST#3
 Test Start: 2014.11.20 @ 11:19:00
 Attn: Eli Felts & Jeff Burk

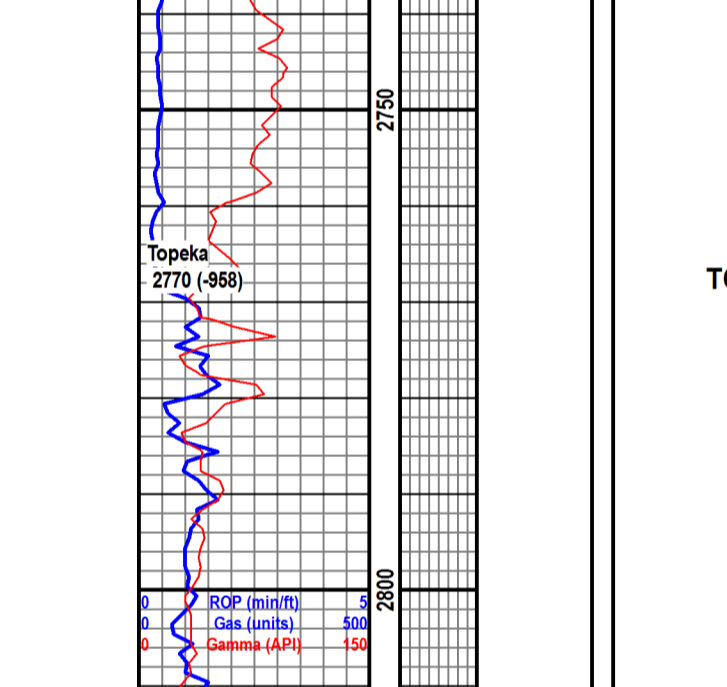
GENERAL INFORMATION:

Formation: Simps on
Unvented: No
Whipstock: ft (KB)
Time Tool Opened: 13:11:30
Time Test Ended: 15:29:53
Interval: 3562.00 ft (KB) To 3596.00 ft (KB) (TVD)
Total Depth: 3566.00 ft (KB) (TVD)
Hole Diameter: 7.88 inches Hole Condition: Fair

Test Type: Conventional Bottom Hole (Initial)
Tester: Dustin Ellis
Unit No: S2-Grand Bend-85
Reference Elevations: 1812.00 ft (KB)
 1803.00 ft (CF)
 KB to GRFCF: 9.00 ft

Serial #: 6875
Press@RunDepth: 42.30 psig @ ft (KB)
Start Date: 2014.11.20
End Date: 2014.11.20
Capacity: 5000.00 psig
Time On Btm: 2014.11.20 @ 11:11:20
Time Off Btm: 2014.11.20 @ 15:34:30

TEST COMMENT: Initial Open 30 min Weak blow built to 1.5 inches.
 Initial Shut in 45 min No blow back
 Final Flow 60 min Weak blow built to 1.5 inches.
 Final Shut in 45 min. No blow back



PRESSURE SUMMARY

Time (Min)	Pressure (psi)	Temp (deg F)	Annotation
0	1700.53	94.48	Initial Hydro-static
1	33.33	94.20	Open To Flow (1)
31	58.37	97.53	Shut In (1)
76	728.82	100.23	Open To Flow (2)
77	38.28	99.92	Open To Flow (2)
136	42.30	102.26	Shut-in (2)
203	222.38	103.63	End Shut-in (2)
204	1721.53	104.26	Final Hydro-static

Recovery

Lamch (ft)	Oil specified wt (ppm)	Volume (bbl)
16.00	Mud 100%	0.08

Gas Rates

Core (inches)	Pressure (psig)	Gas Rate (Mcf/D)

REFERENCE WELLS

FORMATION	Curis #1 Elev. 532'	J-Bar #1 Elev. 521'	Hutchinson Oil Co Elev. 1812'	Sleeper A Elev. 1850'	Sleeper B Elev. 1801'	Ext Elev. 1801'
Anhydrite	521	1291	521	479	321	0
Topeka	2770	-958	-1257	0	2778	-979
Heebner	3063	-1257	3063	3049	-1249	3051
Toronto	0	0	0	0	0	3161
Douglas	3218	-1399	3204	3190	-1390	3117
Brown Lime	3242	-1423	3231	3214	-1414	3243
Lansing	3231	-1419	3231	3242	-1652	3504
BKC	3484	-1672	3484	3452	-1724	3559
Viola	3532	-1720	3532	3554	-1754	3578
Simpson Shale	3564	-1752	3564	3567	-1767	3552
Simpson Sand	3572	-1760	3572	3617	-1817	3644
Arbuclle	3630	-1818	3630	3697	-1897	3750
RTD	3690	-1878	3690	0	3753	-1949
LTD	0	3690	-1878	0	3753	-1952

COMMENTS

Due to the structural position to our "key" well to the northeast, (Heller Drilling's - Sleeper A), and the negative DST results, it was decided that this well should be plugged and abandoned as non-commercial.
 Respectfully submitted,
PETERRA Energy Services
 Jeffrey A. Burk, Petroleum Geologist
 Eli Felts, Petroleum Geologist

ROCK TYPES

Anhy	Coal	Lmst	Schcol
Bent	Congl	Meta	Shgy
Brc	Dol	Mist	Siltst
Clst	Gyp	Sale	Siltst
	Igne		Till

OTHER SYMBOLS

POROSITY	SORTING	OIL SHOW	EVENT
Earthy	Well	Even	Dst
Fenest	Moderate	Spotted	pipensymbol
Fracture	Poor	Clay	Rft
Inter		Dead	Siltst
Moldic	ROUNDING	Gas show	Swell
Organic	Rounded	New symbol	
Pinpoint	Subrgnd		
Vuggy	Angular	INTERVAL	
		Core	

