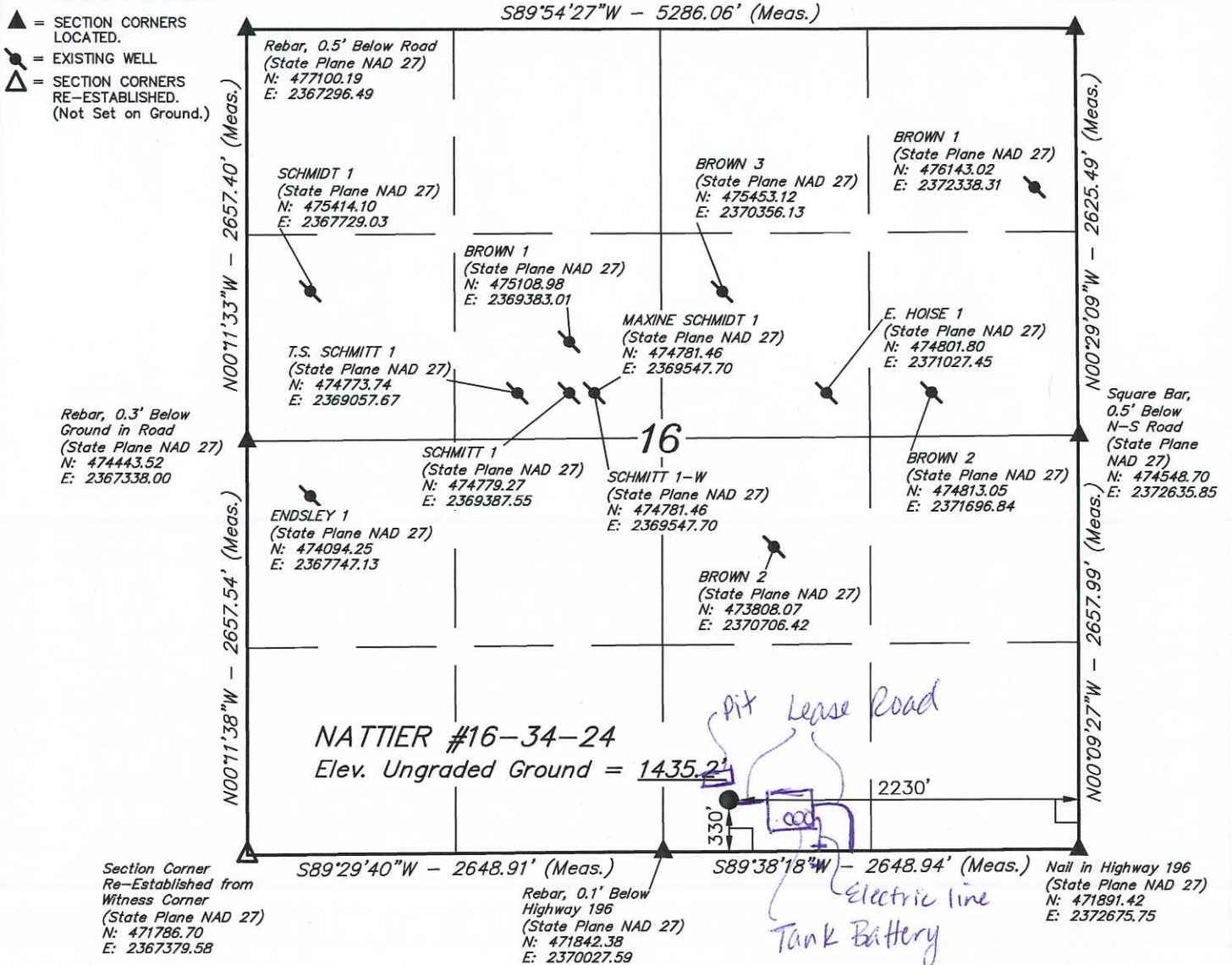


**LEGEND:**

- = 90° SYMBOL
- = PROPOSED WELLHEAD.
- ▲ = SECTION CORNERS LOCATED.
- = EXISTING WELL
- △ = SECTION CORNERS RE-ESTABLISHED. (Not Set on Ground.)

# T24S, R2E, 6th P.M.

Rebar, 0.5' Below N-S Road (State Plane NAD 27)  
 N: 477173.23  
 E: 2372581.41



<b>NAD 83 (SURFACE LOCATION)</b>
LATITUDE = 37°57'23.25" (37.956458)
LONGITUDE = 97°12'55.65" (97.215458)
<b>NAD 27 (SURFACE LOCATION)</b>
LATITUDE = 37°57'23.21" (37.956447)
LONGITUDE = 97°12'54.52" (97.215144)
STATE PLANE NAD 27
N: 472180.01 E: 2370441.42

**CERTIFICATE**

THIS IS TO CERTIFY THAT THE ABOVE PLAT WAS PREPARED FROM FIELD NOTES OF ACTUAL SURVEYS MADE BY ME OR UNDER MY SUPERVISION AND THAT THE SAME ARE TRUE AND CORRECT TO THE BEST OF MY KNOWLEDGE AND BELIEF.

*Robert Justin Peavey*

REGISTERED LAND SURVEYOR  
 REGISTRATION NO. 18341  
 STATE OF KANSAS  
 2014-15

**BASIS OF BEARINGS**  
 BASIS OF BEARINGS IS A G.P.S. OBSERVATION

**BASIS OF ELEVATION**  
 BENCH MARK (U 347) LOCATED IN THE SE 1/4 OF SECTION 31, T22S, R1E, 6th P.M., TAKEN FROM THE NEWTON, QUADRANGLE, KANSAS, 7.5 MINUTE QUAD, (TOPOGRAPHIC MAP) PUBLISHED BY THE UNITED STATES DEPARTMENT OF THE INTERIOR, GEOLOGICAL SURVEY. SAID ELEVATION OBTAINED FROM THE NGS DATA SHEET NAVD 88 IS 1466.55 FEET.

**Source Energy Midcon, LLC**

**NATTIER #16-34-24**  
 SW 1/4 SE 1/4, SECTION 16, T24S, R2E, 6th P.M.  
 HARVEY COUNTY, KANSAS



**UELS, LLC**  
 Corporate Office \* 85 South 200 East  
 Vernal, UT 84078 \* (435) 789-1017

SURVEYED BY: T.B., C.B.	SURVEY DATE: 12-06-14
DRAWN BY: S.S.	DATE DRAWN: 01-12-15
SCALE: 1" = 1000'	REVISED: 00-00-00
<b>WELL LOCATION PLAT</b>	