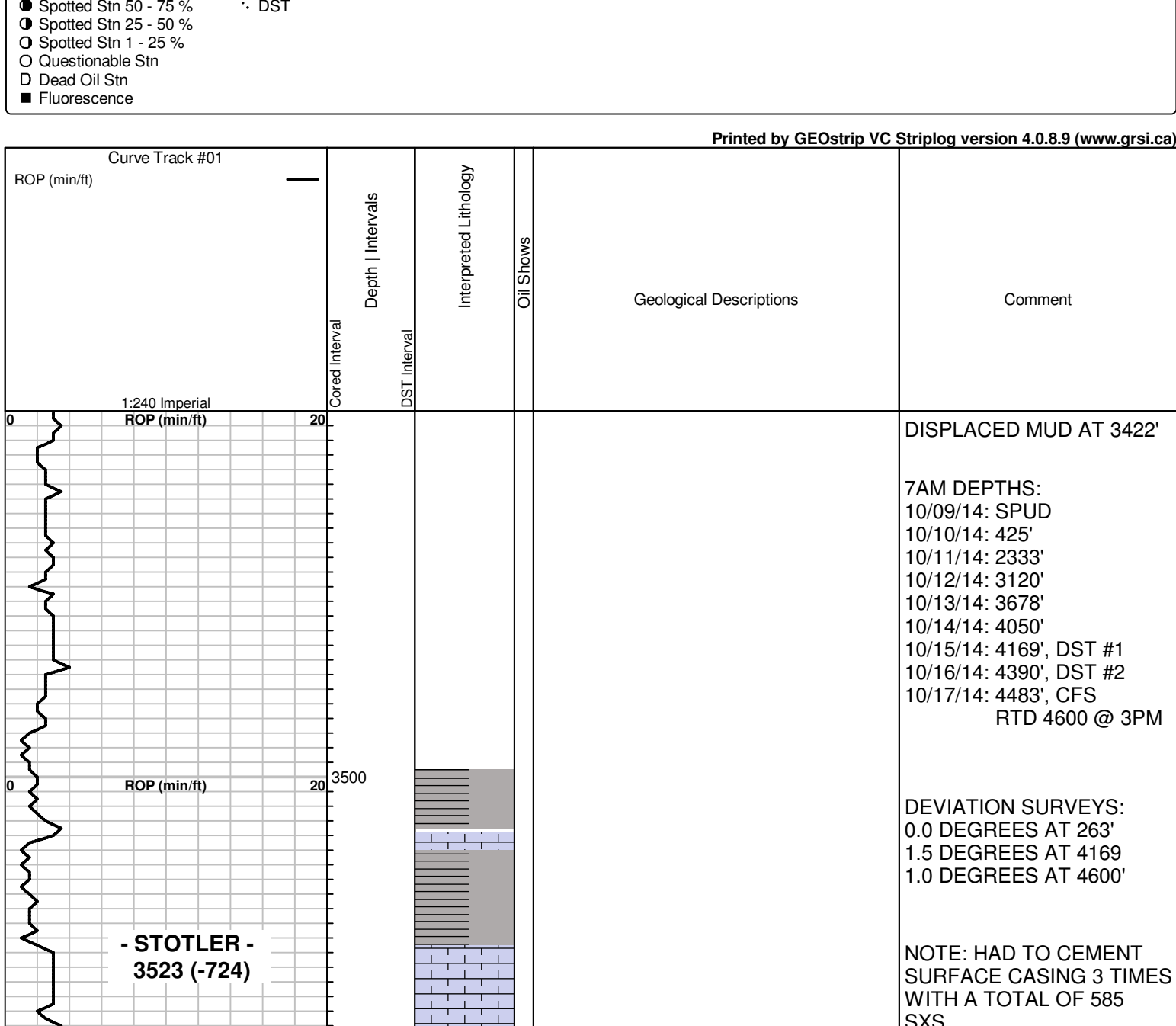
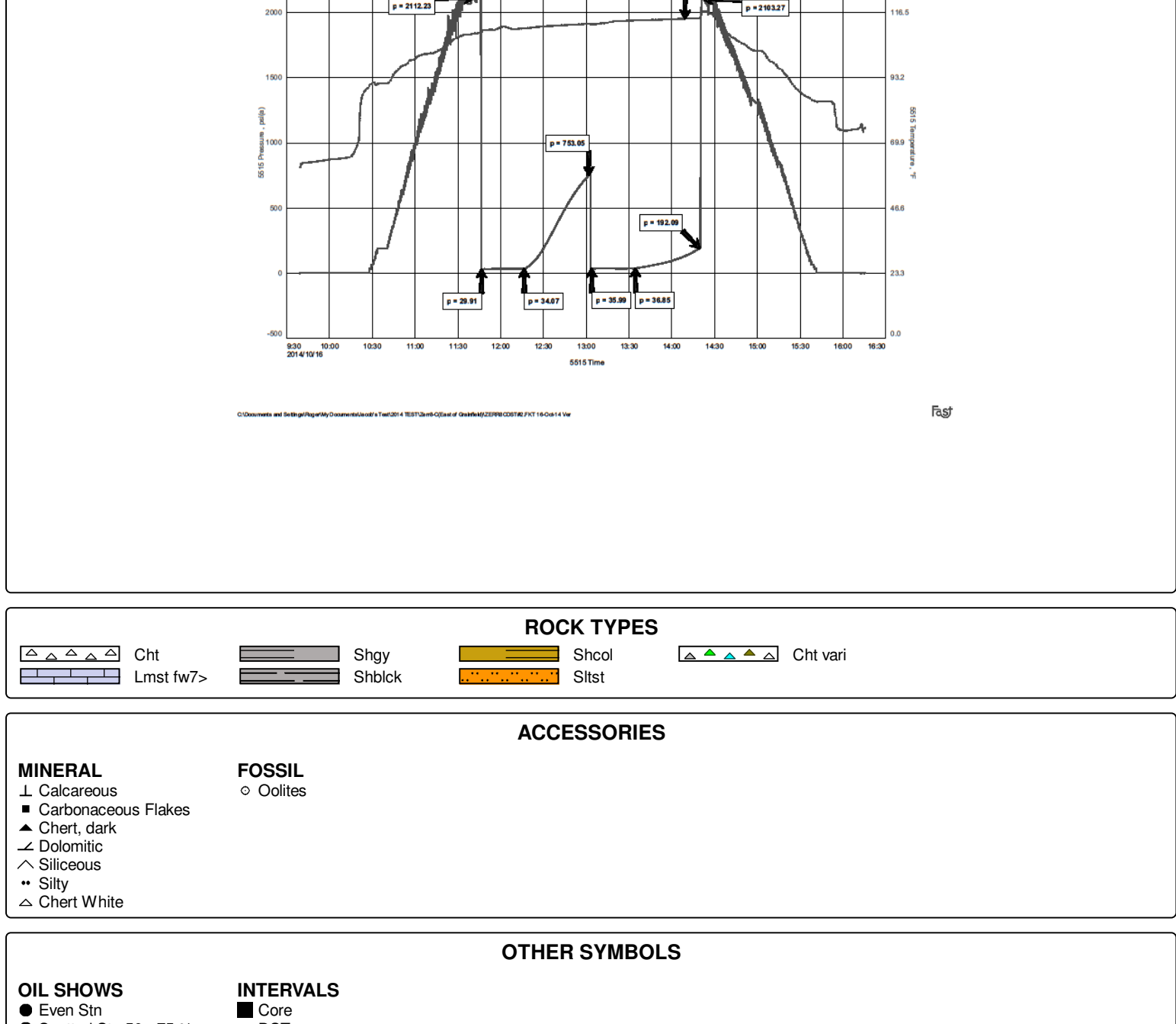


WELL INFORMATION			
Company:	RITCHIE EXP. INC.		
Address:	P.O. BOX 783188 WICHITA, KS 67278		
Well Name:	#1 ZERR 8C		
Location:	450' FSL, 1705' FWL SEC. 8-T11S-R28W GOVE COUNTY, KS		
API:	15-063-22224		
Field:	WILDCAT		
K. B. Elevation:	2799	Rotary Depth:	4600
Ground Elevation:	2791	Log Depth:	4600
Spud Date:	10/09/2014	Drilling Completed:	10/17/2014
Completion:	D&A		
Surface Casing:	8 5/8" SET AT 263'		
Formation at TD:	MISSISSIPPIAN		
Drilling Fluid Type:	CHEMICAL		
Rig Contractor:	DISCOVERY RIG #1		
Logger:	NABORS		
Wellsite Geologist:	LARRY P. FRIEND		
		Logs Run:	DI & CND

FORMATION DEPTHS			
		COMPARED TO: CINCO EXP. CO. #1 HARTMAN (2/1983) SE NW, SEC 5-T11S-28W	
FORMATIONS	SAMPLE (Corrected)	LOG	
ANHYDRITE	2333 (+466)	2334 (+465)	+11
BASE	2369 (+430)	2368 (+431)	+12
STOTLER	3523 (-724)	3522 (-723)	+2
HEEBNER SHALE	3875 (-1076)	3875 (-1076)	+5
TORONTO	3894 (-1095)	3894 (-1095)	+14
LANSING	3903 (-1104)	3904 (-1105)	+8
MUNCIE CREEK SH.	4041 (-1242)	4042 (-1243)	+2
STARSH SHALE	4119 (-1320)	4119 (-1320)	+4
HUSHPUCKNEY SH.	4143 (-1344)	4142 (-1343)	+6
BS. KANSAS CITY	4170 (-1371)	4170 (-1371)	+5
MARMATON	4184 (-1385)	4184 (-1385)	+7
"PAWNEE"	4287 (-1488)	4288 (-1489)	+6
"MYRICK STATION"	4323 (-1524)	4321 (-1522)	+16
"FT. SCOTT"	4376 (-1577)	4374 (-1575)	+12
"CHEROKEE"	4404 (-1605)	4402 (-1603)	+10
MISSISSIPPIAN	4457 (-1658)	4463 (-1664)	+2

NOTES
DUE TO NEGATIVE DST RESULTS IT WAS DECIDED TO PLUG AND ABANDON THE #1 ZERR 8C.
LARRY P. FRIEND

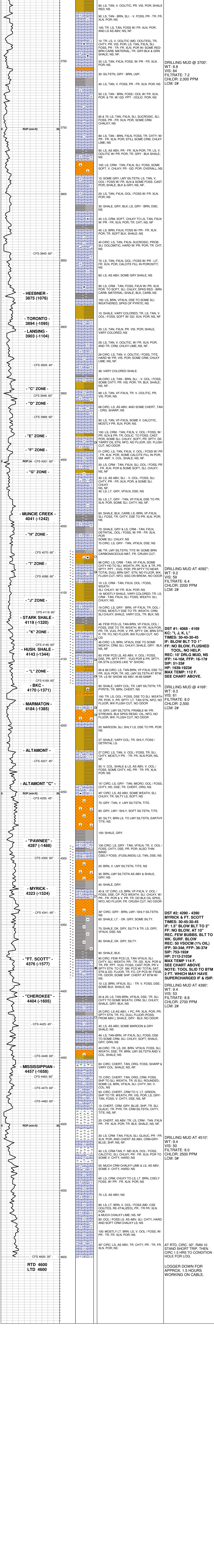
DRILLSTEM TESTS		
No	Interval	Formation
1	4068 - 4169	KC: "I, J, K, L"
2	4290 - 4390	MYRICK + FT. SCOTT



ROCK TYPES			
Chl	Shly	Shst	Chl vari
Lmst fw7-	Shblk	Silst	

ACCESSORIES	
MINERAL	FOSSIL
<ul style="list-style-type: none"> Carbonaceous Flakes Chert, dark Dolomitic Siliceous Silty Chert White 	<ul style="list-style-type: none"> Chert Chert

OTHER SYMBOLS	
OIL SHOWS	INTERVALS
<ul style="list-style-type: none"> Even Stn Spotted Stn 50 - 75 % Spotted Stn 25 - 50 % Spotted Stn 1 - 25 % Questionable Stn Dead Oil Stn Fluorescence 	<ul style="list-style-type: none"> Core DST



DST #1: 4068 - 4169
KC: "I, J, K, L"
TIMES: 30-45-30-45
FF: BLOW BLOW TO 1"
FF: NO BLOW, FLUSHED
TOOL, NO HELP.
REC: 10' DRLG MUD, NS
IFP: 14-16#, FFP: 16-17#
SIP: 51-33#
HP: 1939-1923#
MAX TEMP: 112.4 F.
SEE CHART ABOVE.

DRILLING MUD @ 4390':
 WT: 9.3
 VIS: 5.1
 FILTRATE: 8.0
 CHLOR: 2:500
 LCM: 2#

DRILLING MUD @ 4510':
 WT: 9.4
 VIS: 5.0
 FILTRATE: 8.0
 CHLOR: 2500 PPM
 LCM: 3#

DST #2: 4290 - 4390
MYRICK & FT. SCOTT
TIMES: 30-45-30-45
IF: 5" BLOW BLT TO 2"
FF: NO BLOW, AT 10"
REC. FEW BUBBLES. BLT TO
WK. SURF. BLOW
REC: 50 VSOCM (1% OIL)
IFP: 30-34#, FFP: 36-37#
SIP: 753-192#
HP: 2112-2103#
MAX TEMP: 114 F.
SEE CHART ABOVE.
NOTE: TOOL SLID TO BTM
2 FT. WHICH MAY HAVE
SUPERCHARGED IF & ISIP.

DRILLING MUD @ 4169':
 WT: 9.3
 VIS: 6.1
 FILTRATE: 8.0
 CHLOR: 2:500
 LCM: 2#

DRILLING MUD @ 4600':
 WT: 9.2
 VIS: 5.9
 FILTRATE: 6.4
 CHLOR: 2200 PPM
 LCM: 2#

DRILLING MUD @ 4092':
 WT: 9.2
 VIS: 5.9
 FILTRATE: 6.4
 CHLOR: 2200 PPM
 LCM: 2#

DRILLING MUD @ 4510':
 WT: 9.4
 VIS: 5.0
 FILTRATE: 8.0
 CHLOR: 2500 PPM
 LCM: 3#

DRILLING MUD @ 4390':
 WT: 9.3
 VIS: 5.1
 FILTRATE: 8.0
 CHLOR: 2:500
 LCM: 2#

DRILLING MUD @ 4600 @ 3PM

DEVIATION SURVEYS:
 0.0 DEGREES AT 263'
 1.5 DEGREES AT 4169'
 1.0 DEGREES AT 4600'

NOTE: HAD TO CEMENT
SURFACE CASING 3 TIMES
WITH A TOTAL OF 585
SXS.
TO GET CIRCULATION.
APPARENTLY HAD A
GOOD SIZE WASH OUT /
VOID SPACE.