

Adam Eldani Geo-Log/Report

WellSight Systems

Scale 1:240 (5"=100') Imperial

Measured Depth Log

Well Name: #1 Weisensee 1B

Location: SEC 1-TOWNSHIP 21S- RANGE 18W PAWNEE COUNTY

License Number: API 15-145-21787

Region: KANSAS

Spud Date: 10/15/2014

Drilling Completed: 10/26/2014

Surface Coordinates: 1500' FNL & 1500' FWL

150' N & 150' W of NW SE NW

Bottom Hole

Coordinates: Deviation Surveys are detailed through out the Geo-Report.

Ground Elevation (ft): 2106'

K.B. Elevation (ft): 2115'

Logged Interval (ft): 3200'

To: 4250'

Total Depth (ft): 4252'

Formation: Precambrian

Type of Drilling Fluid: Mud-Co Chemical

Printed by MUD.LOG from WellSight Systems 1-800-447-1534 www.WellSight.com

OPERATOR

Company: Ritchie Exploration Inc. (drilled by Southwind Drilling Rig #2)

Address: 8100 E. 22nd ST. N. #700

Wichita, KS, 67278-3188

GEOLOGIST

Name: Adam M.A. Eldani

Company: Ritchie Exploration Inc.

Address: 8100 E. 22nd ST. N. #700

Wichita, KS, 67278-3188

Tops & Daily Drilling Report

TOPS: DRILLING REPORT

Sample Tops:

Anhydrite: 1167'+948
B/Anhydrite: 1188'+927
Heebner: 3493'-1378
Lansing: 3564'-1449
Muncie Sh: 3709'-1594
Stark Sh: 3780'-1665
Hush: 3820'-1705
BKC: 3847'-1732
Marmaton: 3881'-1766
Pawnee: 3920'-1805
Fort Scott: 3944'-1829
Cherokee SH: 3958'-1843
Conglomerate: 3967'-1852
Arbuckle: 4008'-1893
RTD: 4250'-2135

E-log Tops:

Anhydrite: 1180'+935
B/Anhydrite: 1196'+919
Heebner: 3495'-1380
Lansing: 3566'-1451
Muncie Sh: 3705'-1590
Stark Sh: 3781'-1666
Hush: 3817'-1702
BKC: 3832'-1717
Marmaton: 3854'-1739
Pawnee: 3921'-1806
Fort Scott: 3935'-1820
Cherokee Sh: 3949'-1834
Conglomerate: 3956'-1841
Arbuckle: 4007'-1892
LTD: 4252'-2137

DAILY DRILLING REPORT:

DATE DEPTH:

10/15 SPUD
10/16 1174'
10/17 1390'
10/18 2145'
10/19 2860'
10/20 3445'
10/21 3814'
10/22 3844'
10/23 3990'
10/24 4147'
10/25 4250'
10/26 4250'

Misc.

All DST's info. are NEAR the correct log depth.

RIG: Southwind Rig #2
TOOL PUSHER: Bill Sanders
MUD: MUD CO. (Jason Whiting)
GAS DETECTOR: MBC Well Service, M-7

DRILL STEM TEST'S: Diamond Testing, Mike Cochran

LOGS: NABORS (RUPP)

OFFICE: PETER FIORINI

Comments

Drilling at 1174' at 7:00 a.m. Ran 28 jts new 24# 8-5/8" surface casing. Tally at 1162', set at 1173'. Cemented with 225 sacks 65/35, 3% cc, 6% gel and 175 sacks class A, 3% cc, 2% gel. Cement circulated. Plug down at 3:30 p.m. Drilled out plug at 3:30 a.m. on 10/17/14.

Plug and Abandon. 1st plug set at 3925' with 50 sacks of 60/40 Poz, 4% gel, ¼# flo-seal; 2nd plug set at 1200' with 50 sacks; 3rd plug set at 480' with 40 sacks; 4th plug set at 60' with 20 sacks; 160 total sacks. 30 sacks in rat hole and 20 sacks in mouse hole. Job complete at 1:00 p.m. Plugging orders by Larry Harris with the KCC.

Well Log Surveys BY: NABORS. Compensated Denisty/ Neutron Log, Dual Induction & Sonic.

SAMPLES WILL BE DEPOSITED WITH KANSAS GEOLOGICAL SURVEY.

RESPECTFULLY SUBMITTED

Adam M. A. Eldani

ROCK TYPES

	Anhy		Clyst		Igne		Shale		Till
	Bent		Coal		Lmst		Shcol		Red shale
	Brec		Congl		Meta		Shgy		
	Carb sh		Dol		Mrlst		Sltst		
	Cht		Gyp		Salt		Ss		

ACCESSORIES

MINERAL		Hvymn		Belm		Pellet	TEXTURE	
		Kaol		Bioclst		Pisolite		Boundst
		Marl		Brach		Plant		Chalky
		Minxl		Bryozoa		Strom		Cryxln
		Nodule		Cephal				Earthy
		Phos		Coral	STRINGER			Finexln
		Pyr		Crin		Anhy		Grainst
		Salt		Echin		Arg		Lithogr
		Sandy		Fish		Bent		Microxln
		Silt		Foram		Coal		Mudst
		Sil		Fossil		Dol		Packst
		Sulphur		Fuss		Gyp		Wackest
				Gastro		Ls		
	FOSSIL			Oolite		Mrst		
		Algae		Oomold		Sltstrg		
		Amph		Ostra		Ssstrg		
				Pelec				

OTHER SYMBOLS

POROSITY		Vuggy	ROUNDING		Even		Dst_alt
					Spotted		Dst
	SORTING				Ques		
		Well			Dead	EVENT	
		Moderate					Rft
		Poor	OIL SHOW	INTERVAL			Sidewall
					Core		
					Dst		

Curve Track 1

ROP (min/ft)

Gamma (API)



New Track

Depth

Lithology

Geological Descriptions

Neutron Porosity

TG, C1-C5

0 ROP (min/ft) 10
10 Gamma (API) 150

23

Neutron Porosity (NAPI)
1 10 100

ROP (min/ft) 1800'
Gamma (API) 150

2400

Neutron Porosity (NAPI)
1 10 100

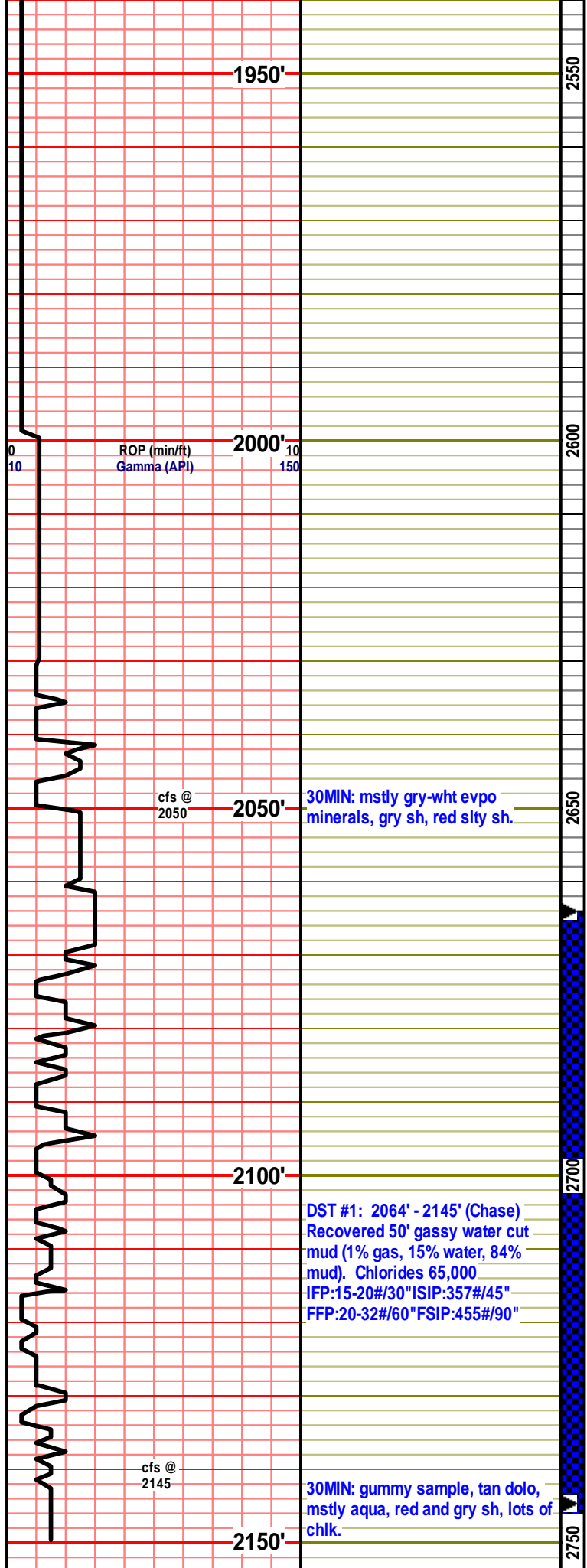
1850'

2450

1900'

2500

e-log tops:
Anhydrite: 1180'+935
B/Anhydrite: 1196'+919



NO SAMPLES AVAILABLE

NO SAMPLES AVAILABLE

2020: mstly salt and sh some red slty sh.

2040: sig incrs in gry sh, red slty sh, salt.

2060: lots of gry sh, evpo minerals, wht fn grn dolo, ns.

2080: aa, show of gry-lght gry inxln lm, dense, poor por, ns.

30MIN: mstly gry-wht evpo minerals, gry sh, red slty sh.

2100: incrs in chlk, mstly gry-red gummy sh.

2120: aa, incrs in gry-tan xln lm, gry fn grn dolo, fair por, no odr, ns.

DST #1: 2064' - 2145' (Chase)
 Recovered 50' gassy water cut mud (1% gas, 15% water, 84% mud). Chlorides 65,000
 IFP:15-20#/30" ISIP:357#/45"
 FFP:20-32#/60" FSIP:455#/90"

2145: sig incrs in gry-drk crm dolo, fn grn, fair intr prtcl por, no odr, ns.

30MIN: gummy sample, tan dolo, mstly aqua, red and gry sh, lots of chlk.

Neutron Porosity (NAPI)
 1 10 100

ROP (min/ft)
Gamma (API)

0 10
10 150



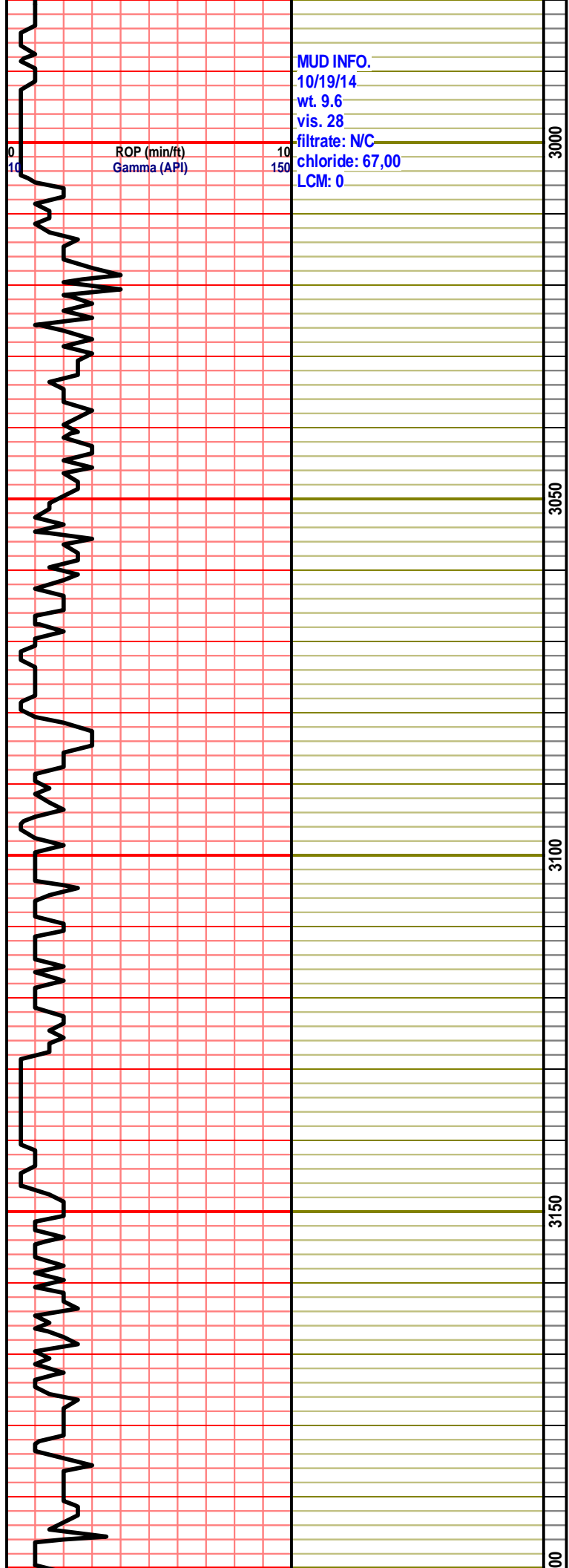
2800
2850
2900
2950

NO SAMPLES AVAILABLE

Neutron Porosity (NAPI)

1 10 100

NO SAMPLES AVAILABLE

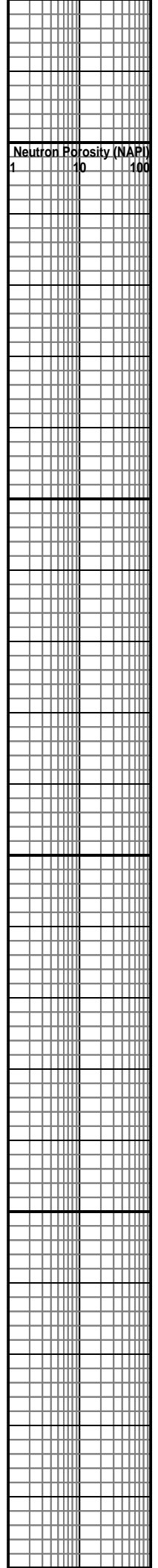


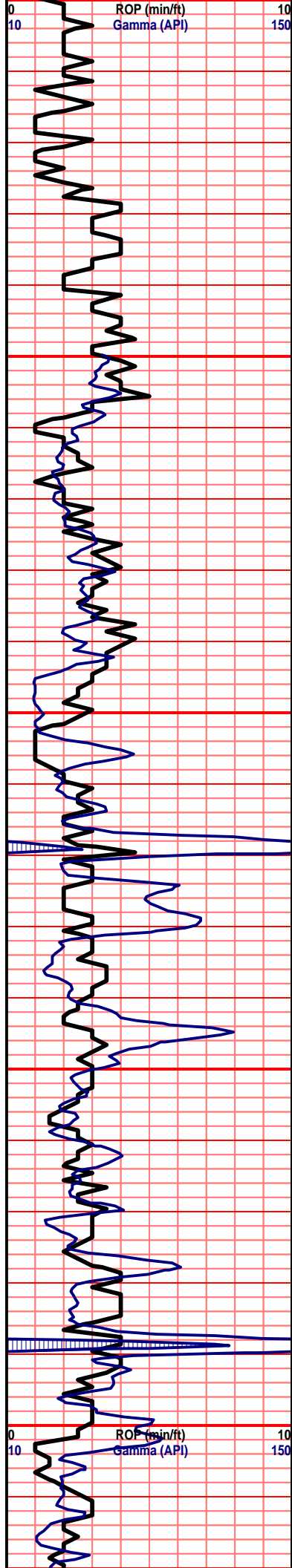
MUD INFO.
10/19/14
wt. 9.6
vis. 28
filtrate: NC
chloride: 67,00
LCM: 0

NO SAMPLES AVAILABLE

NO SAMPLES AVAILABLE

NO SAMPLES AVAILABLE





MUD DISPLACEMENT @ 3250'

location: sit on a winter wheat farm.

GEOLOGIST ON LOCATION @ 3317'



3250: mstly gry sh, tan-gry xln lm, dense, poor xln por, chlky lm, no odr, ns.

3260: incrs in drk gry-blk sh, gry chlky lm, gry xln lm, dense, no odr, ns.

3270: aa, incrs in gry xln lm, incrs in drk crm chrty foss lm, poor-no por, no odr, ns.

3280: aa, incrs in drk crm inxln lm, poor por, no odr, ns.

3290: aa, incrs in chlky lm, incrs in tan-brwn xln lm, sli foss, dense, no odr, ns.

3300: aa, incrs in gry foss xln lm, dense, well cemntd, no odr, ns.

3310: aa, sli incrs in drk crm chlky lm, few crm dolo, fn grn, well cemntd, semi dense, no odr, ns.

3320: incrs in tan xln lm, cemnt flooded, poor-no por, no odr, ns.

3330: incrs in crm chlky lm, incrs in drk-tan inxln lm, dense, no odr, ns.

3340: aa, incrs in tanish crm fn xln lm, no vis por, no odr, ns.

3350: aa, incrs brwn-crm fn xln lm, no vis por, no odr, ns.

3360: incrs in gry-clk carb sh, incrs in gry inxln lm, poor-no por, no odr, ns.

3370: incrs in drk crm foss lm, mstly xln, dense, no odr, ns.

3380: mstly gry xln lm, lots of chrt nod, chrty lm, poor-no por, no odr, ns.

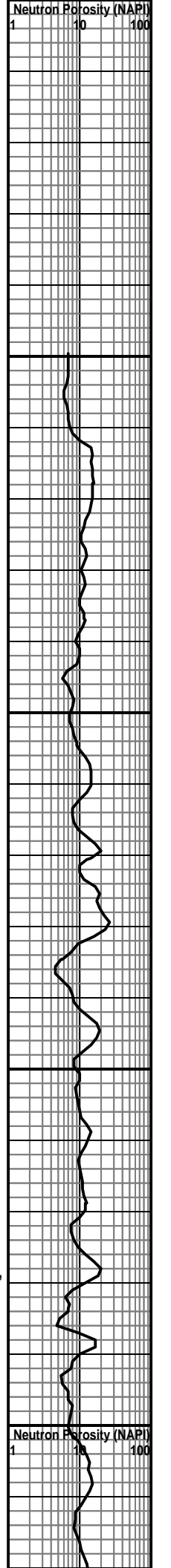
3390: slight incrs in chlky-gry sh, mstly crm-gry xln lm, dense, no odr, ns.

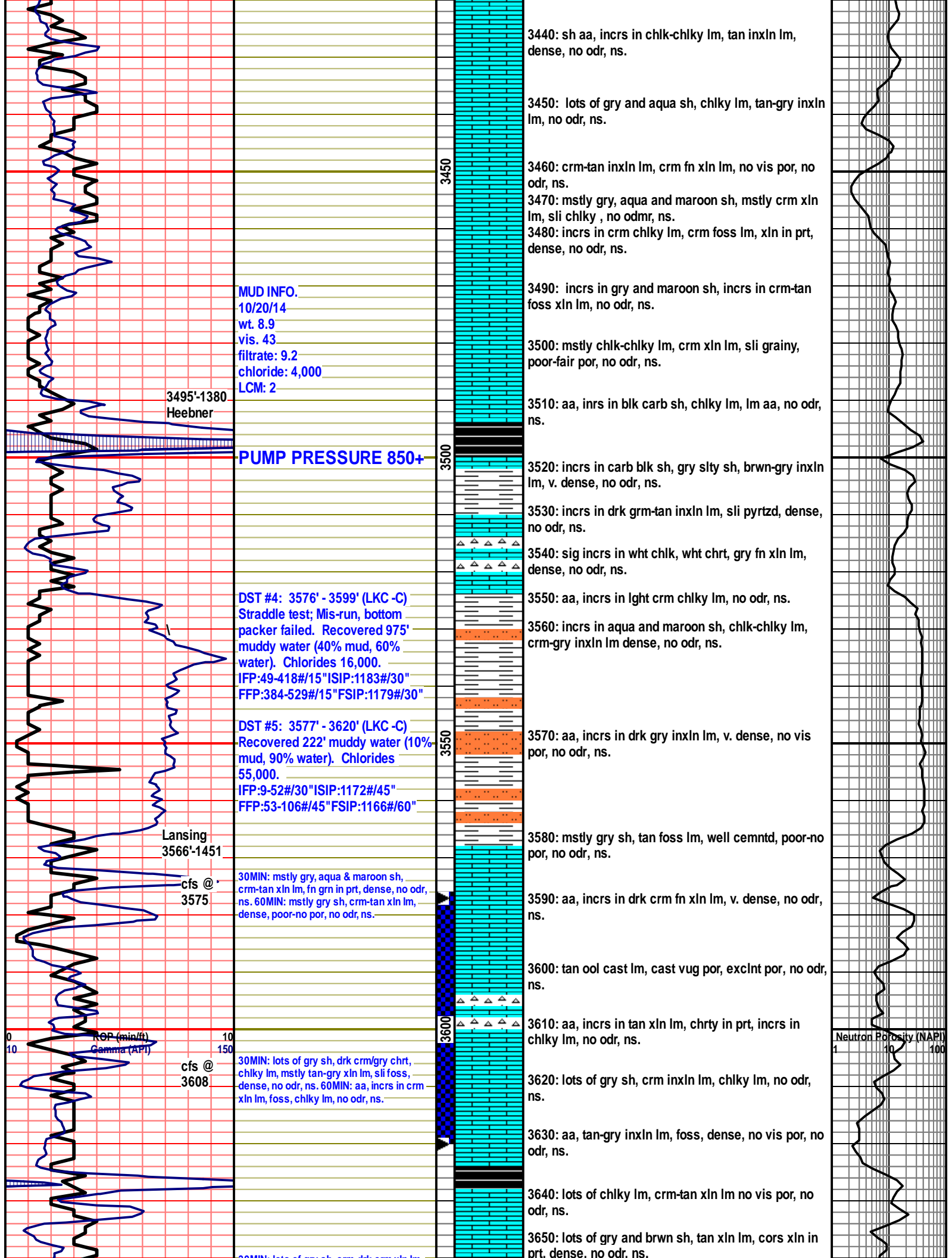
3400: aa, no sig change, no odr, ns.

3410: incrs in gry-drk tan inxln lm, incrs in foss chrt-chrty lm, no odr, ns.

3420: incrs in wht-brwn chrt, shw of lght crm dolo, fn grn, tan inxln lm, dense, no vis por, no odr, ns.

3430: sig incrs in gry sh, chlky lm, crm-gry inxln lm, dense, no odr, ns.





3440: sh aa, incrs in chlk-chlky lm, tan inxln lm, dense, no odr, ns.

3450: lots of gry and aqua sh, chlky lm, tan-gry inxln lm, no odr, ns.

3460: crm-tan inxln lm, crm fn xln lm, no vis por, no odr, ns.

3470: mstly gry, aqua and maroon sh, mstly crm xln lm, sli chlky, no odmr, ns.

3480: incrs in crm chlky lm, crm foss lm, xln in prt, dense, no odr, ns.

MUD INFO.
10/20/14
wt. 8.9
vis. 43
filtrate: 9.2
chloride: 4,000
LCM: 2

3490: incrs in gry and maroon sh, incrs in crm-tan foss xln lm, no odr, ns.

3500: mstly chlk-chlky lm, crm xln lm, sli grainy, poor-fair por, no odr, ns.

3495'-1380
Heebner

3510: aa, inrs in blk carb sh, chlky lm, lm aa, no odr, ns.

PUMP PRESSURE 850+

3520: incrs in carb blk sh, gry slty sh, brwn-gry inxln lm, v. dense, no odr, ns.

3530: incrs in drk grm-tan inxln lm, sli pyrtzd, dense, no odr, ns.

3540: sig incrs in wht chlk, wht chrt, gry fn xln lm, dense, no odr, ns.

DST #4: 3576' - 3599' (LKC-C)
Straddle test; Mis-run, bottom packer failed. Recovered 975' muddy water (40% mud, 60% water). Chlorides 16,000.
IFP:49-418#/15" ISIP:1183#/30"
FFP:384-529#/15" FSIP:1179#/30"

3550: aa, incrs in lght crm chlky lm, no odr, ns.

3560: incrs in aqua and maroon sh, chlk-chlky lm, crm-gry inxln lm dense, no odr, ns.

DST #5: 3577' - 3620' (LKC-C)
Recovered 222' muddy water (10% mud, 90% water). Chlorides 55,000.
IFP:9-52#/30" ISIP:1172#/45"
FFP:53-106#/45" FSIP:1166#/60"

3570: aa, incrs in drk gry inxln lm, v. dense, no vis por, no odr, ns.

Lansing
3566'-1451

3580: mstly gry sh, tan foss lm, well cemntd, poor-no por, no odr, ns.

30MIN: mstly gry, aqua & maroon sh, crm-tan xln lm, fn grn in prt, dense, no odr, ns. 60MIN: mstly gry sh, crm-tan xln lm, dense, poor-no por, no odr, ns.

3590: aa, incrs in drk crm fn xln lm, v. dense, no odr, ns.

cfs @
3575

3600: tan ool cast lm, cast vug por, exclnt por, no odr, ns.

3610: aa, incrs in tan xln lm, chrtly in prt, incrs in chlky lm, no odr, ns.

ROP (min/ft)
Gamma (API)

cfs @
3608

30MIN: lots of gry sh, drk crm/gry chrt, chlky lm, mstly tan-gry xln lm, sli foss, dense, no odr, ns. 60MIN: aa, incrs in crm xln lm, foss, chlky lm, no odr, ns.

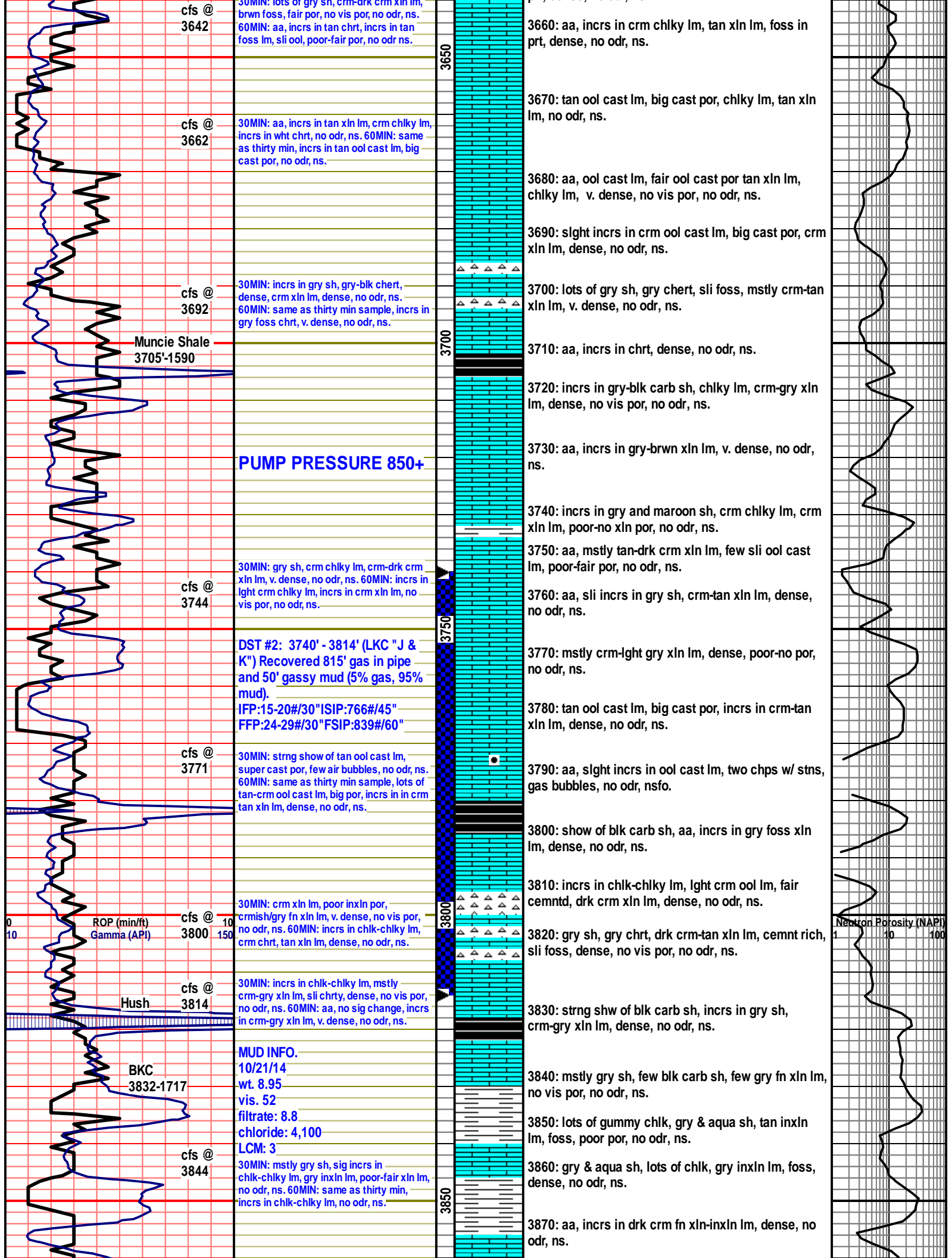
3620: lots of gry sh, crm inxln lm, chlky lm, no odr, ns.

3630: aa, tan-gry inxln lm, foss, dense, no vis por, no odr, ns.

3640: lots of chlky lm, crm-tan xln lm no vis por, no odr, ns.

3650: lots of gry and brwn sh, tan xln lm, cors xln in prt, dense, no odr, ns.

Neutron Porosity (NAPI)



cfs @ 3642

30MIN: lots of gry sh, crm-drk crm xln lm, brwn foss, fair por, no vis por, no odr, ns. 60MIN: aa, incrs in tan chrt, incrs in tan foss lm, sli ool, poor-fair por, no odr ns.

3660: aa, incrs in crm chlky lm, tan xln lm, foss in prt, dense, no odr, ns.

cfs @ 3662

30MIN: aa, incrs in tan xln lm, crm chlky lm, incrs in wht chrt, no odr, ns. 60MIN: same as thirty min, incrs in tan ool cast lm, big cast por, no odr, ns.

3670: tan ool cast lm, big cast por, chlky lm, tan xln lm, no odr, ns.

3680: aa, ool cast lm, fair ool cast por tan xln lm, chlky lm, v. dense, no vis por, no odr, ns.

cfs @ 3692

30MIN: incrs in gry sh, gry-blk chert, dense, crm xln lm, dense, no odr, ns. 60MIN: same as thirty min sample, incrs in gry foss chrt, v. dense, no odr, ns.

3690: slight incrs in crm ool cast lm, big cast por, crm xln lm, dense, no odr, ns.

3700: lots of gry sh, gry chert, sli foss, mstly crm-tan xln lm, v. dense, no odr, ns.

Muncie Shale 3705'-1590'

3700

3710: aa, incrs in chrt, dense, no odr, ns.

3720: incrs in gry-blk carb sh, chlky lm, crm-gry xln lm, dense, no vis por, no odr, ns.

PUMP PRESSURE 850+

3730: aa, incrs in gry-brwn xln lm, v. dense, no odr, ns.

3740: incrs in gry and maroon sh, crm chlky lm, crm xln lm, poor-no xln por, no odr, ns.

cfs @ 3744

30MIN: gry sh, crm chlky lm, crm-drk crm xln lm, v. dense, no odr, ns. 60MIN: incrs in lght crm chlky lm, incrs in crm xln lm, no vis por, no odr, ns.

3750: aa, mstly tan-drk crm xln lm, few sli ool cast lm, poor-fair por, no odr, ns.

3760: aa, sli incrs in gry sh, crm-tan xln lm, dense, no odr, ns.

DST #2: 3740' - 3814' (LKC "J & K") Recovered 815' gas in pipe and 50' gassy mud (5% gas, 95% mud). IFP:15-20#/30" ISIP:766#/45" FFP:24-29#/30" FSIP:839#/60"

3750

3770: mstly crm-lght gry xln lm, dense, poor-no por, no odr, ns.

3780: tan ool cast lm, big cast por, incrs in crm-tan xln lm, dense, no odr, ns.

cfs @ 3771

30MIN: strng show of tan ool cast lm, super cast por, few air bubbles, no odr, ns. 60MIN: same as thirty min sample, lots of tan-crm ool cast lm, big por, incrs in in crm tan xln lm, dense, no odr, ns.

3790: aa, slight incrs in ool cast lm, two chps w/ stns, gas bubbles, no odr, nsfo.

3800: show of blk carb sh, aa, incrs in gry foss xln lm, dense, no odr, ns.

ROP (min/ft) Gamma (API)

cfs @ 3800

30MIN: crm xln lm, poor inxln por, crmish/gry fn xln lm, v. dense, no vis por, no odr, ns. 60MIN: incrs in chl-chlky lm, crm chrt, tan xln lm, dense, no odr, ns.

3800

3810: incrs in chl-chlky lm, lght crm ool lm, fair cemntd, drk crm xln lm, dense, no odr, ns.

3820: gry sh, gry chrt, drk crm-tan xln lm, cemnt rich, sli foss, dense, no vis por, no odr, ns.

Hush cfs @ 3814

30MIN: incrs in chl-chlky lm, mstly crm-gry xln lm, sli chrt, dense, no vis por, no odr, ns. 60MIN: aa, no sig change, incrs in crm-gry xln lm, v. dense, no odr, ns.

3830: strng shw of blk carb sh, incrs in gry sh, crm-gry xln lm, dense, no odr, ns.

BKC 3832-1717

MUD INFO. 10/21/14 wt. 8.95 vis. 52 filtrate: 8.8 chloride: 4,100 LCM: 3

3840: mstly gry sh, few blk carb sh, few gry fn xln lm, no vis por, no odr, ns.

3850: lots of gummy chl, gry & aqua sh, tan inxln lm, foss, poor por, no odr, ns.

cfs @ 3844

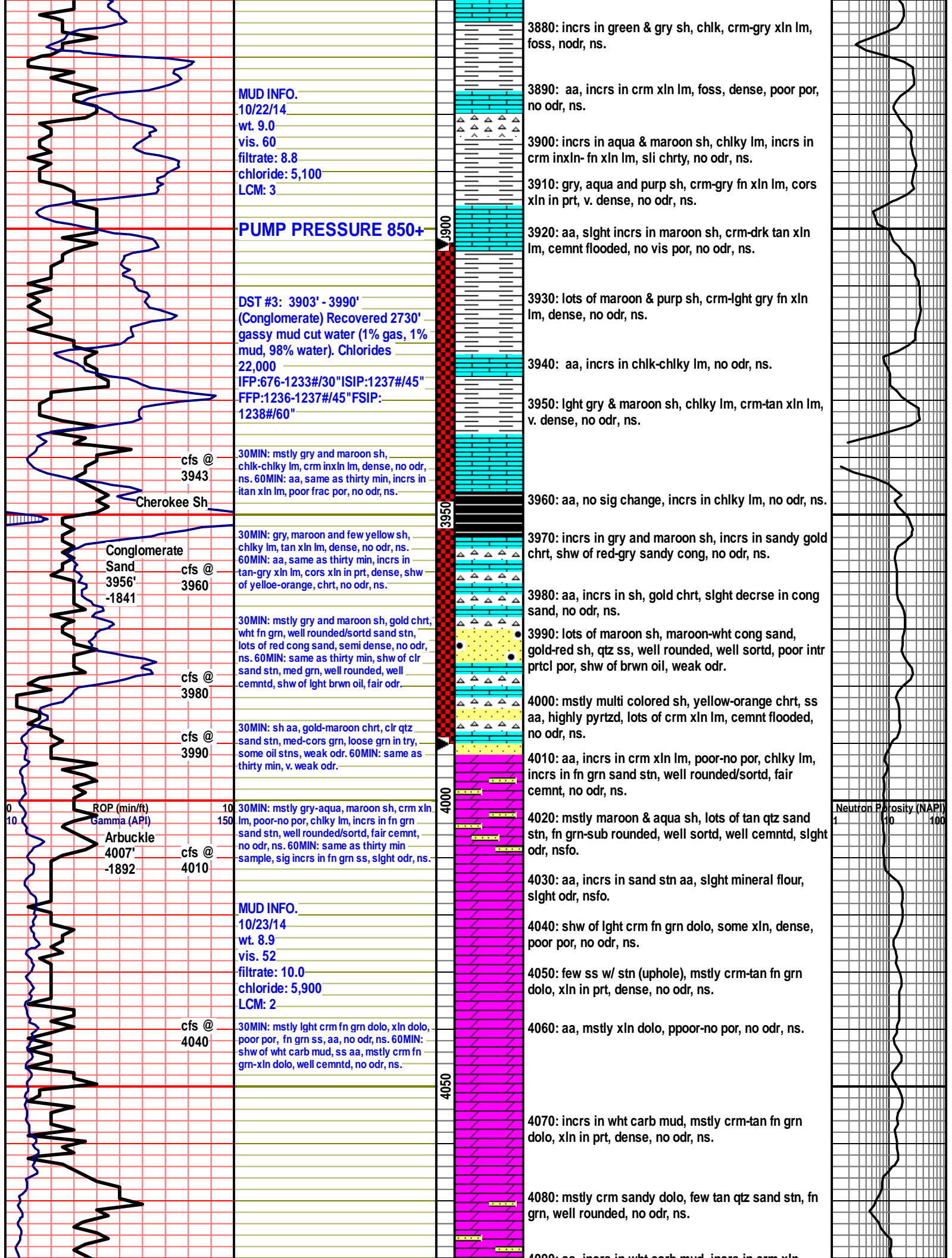
30MIN: mstly gry sh, sig incrs in chl-chlky lm, gry inxln lm, poor-fair xln lm, no odr, ns. 60MIN: same as thirty min, incrs in chl-chlky lm, no odr, ns.

3850

3860: gry & aqua sh, lots of chl, gry inxln lm, foss, dense, no odr, ns.

3870: aa, incrs in drk crm fn xln-inxln lm, dense, no odr, ns.

Neutron Porosity (NAPI)



MUD INFO.
 10/22/14
 wt. 9.0
 vis. 60
 filtrate: 8.8
 chloride: 5,100
 LCM: 3

PUMP PRESSURE 850+

DST #3: 3903' - 3990'
(Conglomerate) Recovered 2730'
 gassy mud cut water (1% gas, 1% mud, 98% water). Chlorides 22,000
 IFF:676-1233#/30"ISIP:1237#/45"
 FFP:1236-1237#/45"FSIP:1238#/60"

cfs @ 3943
 Cherokee Sh

Conglomerate Sand
 cfs @ 3956' -1841

cfs @ 3980
 30MIN: mstly gry and maroon sh, gold chrt, wht fn grn, well rounded/sortd sand stn, lots of red cong sand, semi dense, no odr, ns. 60MIN: same as thirty min, shw of clr sand stn, med grn, well rounded, well cemtd, shw of lght brwn oil, fair odr.

cfs @ 3990
 30MIN: sh aa, gold-maroon chrt, clr qtz sand stn, med-cors grn, loose grn in try, some oil stns, weak odr. 60MIN: same as thirty min, v. weak odr.

ROP (min/ft) Gamma (API)
Arbuckle
 4007' -1892
 cfs @ 4010

30MIN: mstly gry-aqua, maroon sh, crm xln lm, poor-no por, chlky lm, incrs in fn grn sand stn, well rounded/sortd, fair cemnt, no odr, ns. 60MIN: same as thirty min sample, sig incrs in fn grn ss, slight odr, ns.

MUD INFO.
 10/23/14
 wt. 8.9
 vis. 52
 filtrate: 10.0
 chloride: 5,900
 LCM: 2

cfs @ 4040
 30MIN: mstly lght crm fn grn dolo, xln dolo, poor por, fn grn ss, aa, no odr, ns. 60MIN: shw of wht carb mud, ss aa, mstly crm fn grn-xln dolo, well cemtd, no odr, ns.

3880: incrs in green & gry sh, chlky, crm-gry xln lm, foss, nodr, ns.

3890: aa, incrs in crm xln lm, foss, dense, poor por, no odr, ns.

3900: incrs in aqua & maroon sh, chlky lm, incrs in crm inxln- fn xln lm, sli chrty, no odr, ns.

3910: gry, aqua and purp sh, crm-gry fn xln lm, cors xln in prt, v. dense, no odr, ns.

3920: aa, slight incrs in maroon sh, crm-drk tan xln lm, cemnt flooded, no vis por, no odr, ns.

3930: lots of maroon & purp sh, crm-lght gry fn xln lm, dense, no odr, ns.

3940: aa, incrs in chlky-chlky lm, no odr, ns.

3950: lght gry & maroon sh, chlky lm, crm-tan xln lm, v. dense, no odr, ns.

3960: aa, no sig change, incrs in chlky lm, no odr, ns.

3970: incrs in gry and maroon sh, incrs in sandy gold chrt, shw of red-gry sandy cong, no odr, ns.

3980: aa, incrs in sh, gold chrt, slight decrse in cong sand, no odr, ns.

3990: lots of maroon sh, maroon-wht cong sand, gold-red sh, qtz ss, well rounded, well sortd, poor intr prtcl por, shw of brwn oil, weak odr.

4000: mstly multi colored sh, yellow-orange chrt, ss aa, highly pyrtzd, lots of crm xln lm, cemnt flooded, no odr, ns.

4010: aa, incrs in crm xln lm, poor-no por, chlky lm, incrs in fn grn sand stn, well rounded/sortd, fair cemnt, no odr, ns.

4020: mstly maroon & aqua sh, lots of tan qtz sand stn, fn grn-sub rounded, well sortd, well cemntd, slight odr, nsfo.

4030: aa, incrs in sand stn aa, slight mineral flour, slight odr, nsfo.

4040: shw of lght crm fn grn dolo, some xln, dense, poor por, no odr, ns.

4050: few ss w/ stn (uphole), mstly crm-tan fn grn dolo, xln in prt, dense, no odr, ns.

4060: aa, mstly xln dolo, ppoor-no por, no odr, ns.

4070: incrs in wht carb mud, mstly crm-tan fn grn dolo, xln in prt, dense, no odr, ns.

4080: mstly crm sandy dolo, few tan qtz sand stn, fn grn, well rounded, no odr, ns.

4090: aa, incrs in wht carb mud, incrs in crm xln

Neutron Porosity (NAPI)
 1 10 100

BIT PROBLEMS DURING THIS INTERVAL 14 MIN AVERAGE.

Granite
4157'-2042

BIT PROBLEMS DURING THIS INTERVAL 14 MIN AVERAGE.

ROP (ft/min) 0 10
Gamma (API) 10 150

MUD INFO.
10/24/14
wt. 9.1
vis. 50
filtrate: 12.4
chloride: 5,900
LCM: 2

PUMP PRESSURE 850+

60MIN: lots of aqua, gry, maroon sh, stly in prt, wht-pink carb mud, mstly pink-orange granite, biotite rich, k-feldspar, qtz, no odr, ns.

4100

4150

4200

4250

4090: aa, incrs in wht carb mud, incrs in crm xln dolo, no odr, ns.

4100: slght incrs incrs in gry sh, mstly crm sandy dolo, no odr, ns.

4110: shw of rose-clr qtz ss, well rounded/sortd, well cemntd, poor por, shw of yellow-rose red chrt, no odr, ns.

4120: incrs in gry and maroon sh, ss aa, mstly crm sandy dolo, well cemntd, no odr, ns.

4130: aa, incrs in gry & aqua sh, loose cors qtz grns, incrs in clr qtz ss, fn-med grn, fair cemnt, sandy dolo aa, no odr, ns.

4140: mstly gry sh, incrs in fn grn qtz sand stn, aa, fair cemnt, no odr, ns.

4150: aa, mstly gry-brwn sh, lots of fn grn qtz sand stn, aa, fair-well cemnt, no odr, ns.

4160: mstly gry sh, maroon sh, fn grn qtz sand stn, fair cemnt, well sortd, no odr, ns.

4170: aa, no sig change, slght incrs in wht carb mud, no odr, ns.

4180: aa, show of pink granite, feldspar, biotite, qtz, dense, no odr, ns.

4190: sig incrs in pink-orange granite, lots of gry sh, no odr, ns.

4200: aa, lots of pink-orange granite, few clr-yellow chrt/qtz, no odr, ns.

4210: decrse in sh, mstly granite aa, no odr, ns.

4220: aa, no sig change, no odr, ns.

4230: slght incrs in maron & gry sh, orange granite, biotite rich, pink feldspar, clr qtz, no odr, ns.

4240: aa, no sig change, incrs in wht/pink carb mud, no odr, ns.

4250: no sig change, mstly granite aa, no odr, ns.

Neutron Porosity (NAPI) 1 10 100