

* This distance is calculated using geographic tools and a PLSS data layer.
** This distance is calculated using the pythagorean theorem and assuming that the section is exactly 5280 feet water well is within a mile of the well spot, but is in a neighboring section, then this distance is not calculated.
*** This distance is calculated using UTM coordinates.

KGS Map Viewer - Oil and Gas Wells and Fields

[Section 19-28S-30W](#) (Opens in separate window)

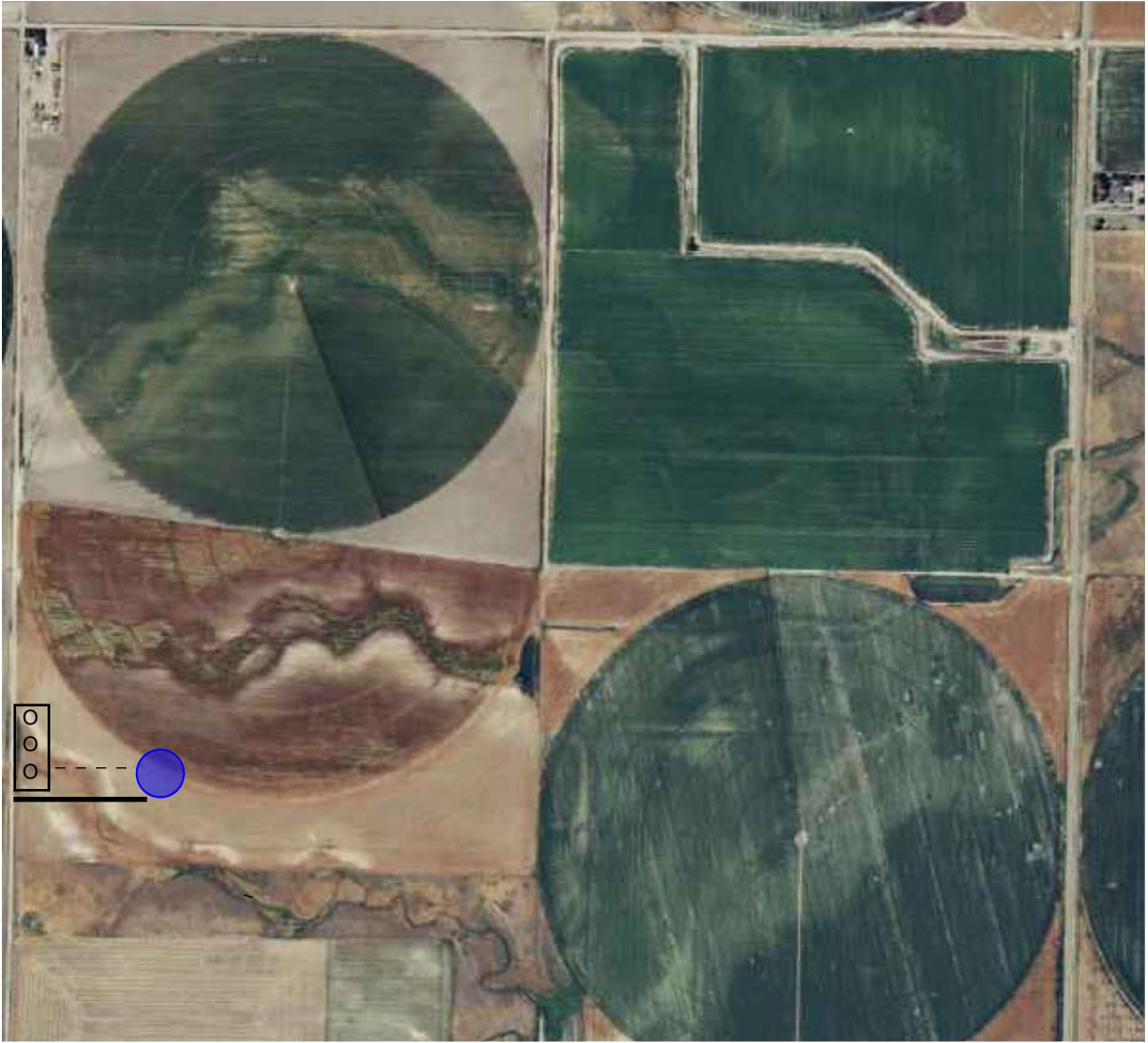
Available Fields

Quarter Calls

No Fields Available

STEVE TUCKER #1-19(SW)

- 2012
- 2010
- 2006
- 2002
- Topo



PRELIMINARY NON-BINDING LOCATION OF TANKS/ROADS/LEADLINES