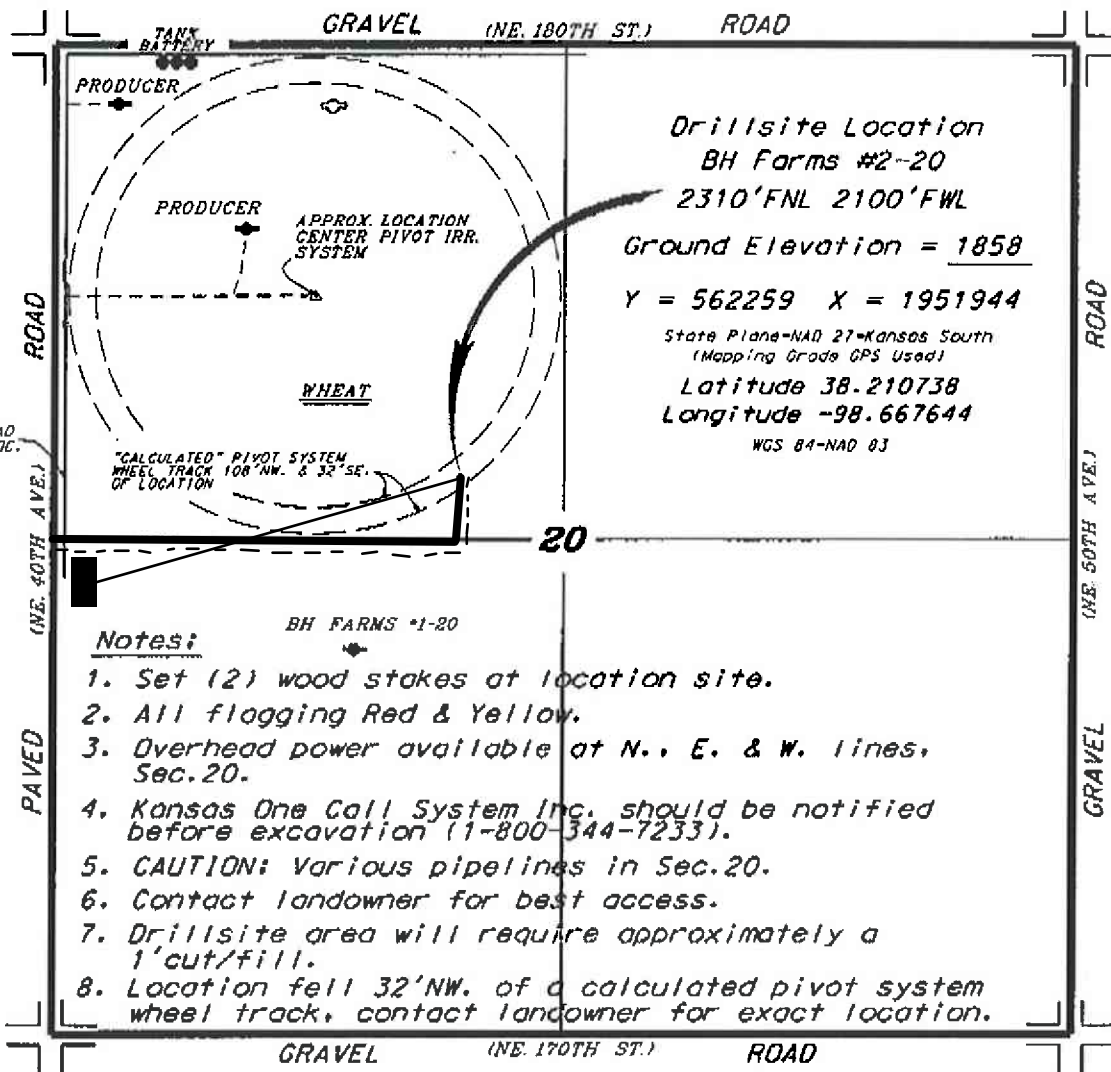


**L.D. DRILLING, INC.**  
**BH FARMS LEASE**  
**NW-1/4, SECTION 20, T21S, R12W**  
**STAFFORD COUNTY, KANSAS**

**Directions:**

From the intersection of Highway 281 and Highway 19, go 4.0 miles North on Highway 281, then go 4.0 miles East to the NW corner of Section 20, then go 0.43 miles South to a flag on the east edge of road, then go 0.39 miles East to location.

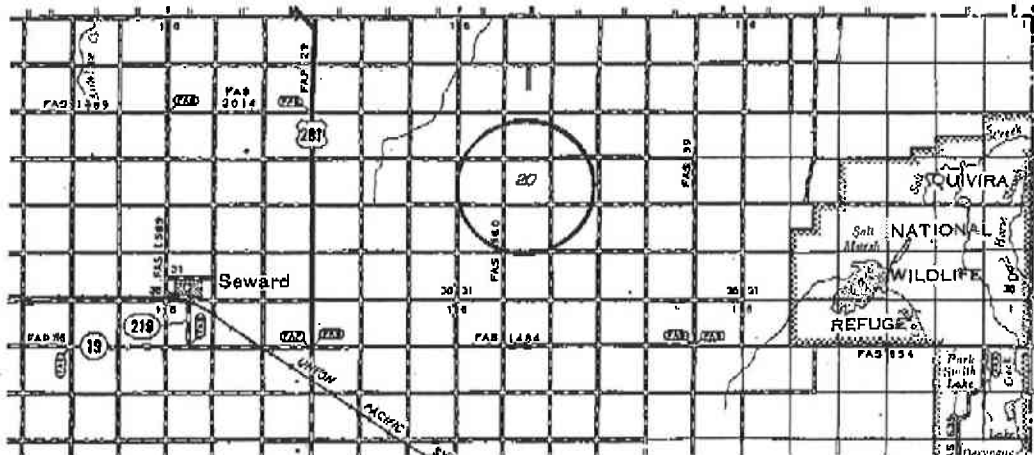


**Drillsite Location**  
**BH Farms #2-20**  
**2310'FNL 2100'FWL**  
**Ground Elevation = 1858**  
**Y = 562259 X = 1951944**  
 State Plane-NAD 27-Kansas South  
 (Mapping Grade GPS Used)  
**Latitude 38.210738**  
**Longitude -98.667644**  
 WGS 84-NAD 83

**Notes:**

1. Set (2) wood stakes at location site.
2. All flogging Red & Yellow.
3. Overhead power available at N., E. & W. lines, Sec.20.
4. Kansas One Call System Inc. should be notified before excavation (1-800-344-7233).
5. CAUTION: Various pipelines in Sec.20.
6. Contact landowner for best access.
7. Drillsite area will require approximately a 1' cut/fill.
8. Location fell 32'NW. of a calculated pivot system wheel track, contact landowner for exact location.

\*Ingress and egress to location as shown on this plot is for usage only and may not be legally opened for public use. Contact landowner, tenant and county road department for access.



\* Controlling data is based upon the best maps and photographs available to us and upon a regular section of land containing 640 acres.  
 \* Approximate section lines were determined using the normal standard of care of a field surveyor practicing in the state of Kansas. The section corners, which establish the precise section lines, were not necessarily located, and the exact location of the drillsite location in the section is not guaranteed. Therefore, the operator securing this service and occupying this plot and all other parties relying thereon agree to hold Central Kansas Oilfield Services, Inc., its officers and employees harmless from all losses, costs and expenses and hold entitled released from any liability from incidental or consequential damages.  
 \* Elevations derived from National Geodetic Vertical Datum.

DATE **January 26, 2015**