



## DRILL STEM TEST REPORT

Prepared For: **Downing-Nelson Oil Co Inc**

PO Box 1019  
Hays KS 67601

ATTN: Marc Downing

### **Sunley-Curtain #1-26**

#### **26 14s 19w Ellis,KS**

Start Date: 2015.01.19 @ 05:30:00

End Date: 2015.01.19 @ 12:13:00

Job Ticket #: 61390                      DST #: 1

Trilobite Testing, Inc  
1515 Commerce Parkway Hays, KS 67601  
ph: 785-625-4778 fax: 785-625-5620

Printed: 2015.01.22 @ 09:10:29



**TRILOBITE  
TESTING, INC**

# DRILL STEM TEST REPORT

Dow ning-Nelson Oil Co Inc

**26 14s 19w Ellis,KS**

PO Box 1019  
Hays KS 67601

**Sunley-Curtain #1-26**

Job Ticket: 61390

**DST#: 1**

ATTN: Marc Dow ning

Test Start: 2015.01.19 @ 05:30:00

## GENERAL INFORMATION:

Formation: **LKC " D "**

Deviated: No Whipstock: ft (KB)

Time Tool Opened: 08:24:00

Time Test Ended: 12:13:00

Test Type: Conventional Bottom Hole (Initial)

Tester: Jim Svaty

Unit No: 76

**Interval: 3463.00 ft (KB) To 3487.00 ft (KB) (TVD)**

Reference Elevations: 2115.00 ft (KB)

Total Depth: 3487.00 ft (KB) (TVD)

2107.00 ft (CF)

Hole Diameter: 7.88 inches Hole Condition: Fair

KB to GR/CF: 8.00 ft

**Serial #: 8289**

**Inside**

Press@RunDepth: 19.50 psig @ 3464.00 ft (KB)

Capacity: 8000.00 psig

Start Date: 2015.01.19

End Date:

2015.01.19

Last Calib.:

2015.01.19

Start Time: 05:30:02

End Time:

12:12:30

Time On Btm:

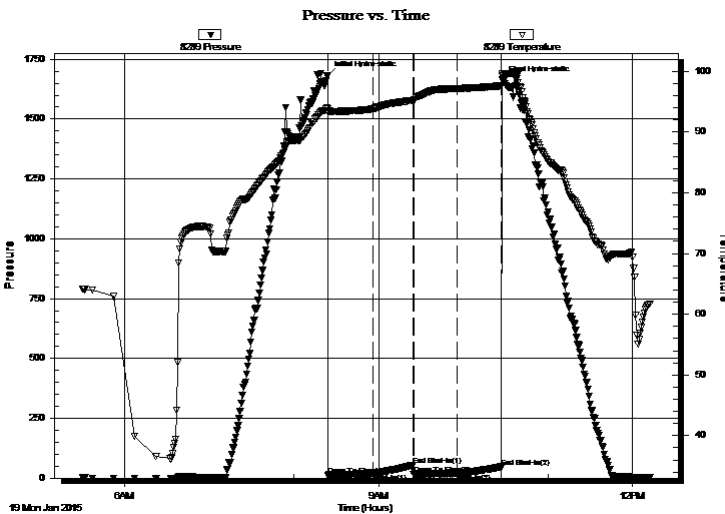
2015.01.19 @ 08:23:45

Time Off Btm:

2015.01.19 @ 10:27:30

**TEST COMMENT:** 30-IFP- Surface Blow Building to 1"  
30-ISIP- No Blow  
30-FFP- Surface Blow Building to 1 1/2"  
30-FSIP- No Blow

## PRESSURE SUMMARY



Time (Min.)	Pressure (psig)	Temp (deg F)	Annotation
0	1681.79	93.88	Initial Hydro-static
1	13.20	93.28	Open To Flow (1)
32	18.27	93.78	Shut-In(1)
61	53.48	95.21	End Shut-In(1)
61	15.56	95.17	Open To Flow (2)
92	19.50	97.15	Shut-In(2)
124	47.07	97.60	End Shut-In(2)
124	1662.72	99.33	Final Hydro-static

## Recovery

Length (ft)	Description	Volume (bbl)
15.00	OCM 5%o 95%m	0.07

## Gas Rates

	Choke (inches)	Pressure (psig)	Gas Rate (Mcf/d)





**TRILOBITE  
TESTING, INC**

# DRILL STEM TEST REPORT

**TOOL DIAGRAM**

Dow ning-Nelson Oil Co Inc

**26 14s 19w Ellis,KS**

PO Box 1019  
Hays KS 67601

**Sunley-Curtain #1-26**

Job Ticket: 61390

**DST#: 1**

ATTN: Marc Dow ning

Test Start: 2015.01.19 @ 05:30:00

## Tool Information

Drill Pipe:	Length: 3438.00 ft	Diameter: 3.80 inches	Volume: 48.23 bbl	Tool Weight:	2500.00 lb
Heavy Wt. Pipe:	Length: 0.00 ft	Diameter: 2.75 inches	Volume: 0.00 bbl	Weight set on Packer:	25000.00 lb
Drill Collar:	Length: 29.00 ft	Diameter: 2.25 inches	Volume: 0.14 bbl	Weight to Pull Loose:	44000.00 lb
			<u>Total Volume: 48.37 bbl</u>	Tool Chased	0.00 ft
Drill Pipe Above KB:	25.00 ft			String Weight: Initial	42000.00 lb
Depth to Top Packer:	3463.00 ft			Final	42000.00 lb
Depth to Bottom Packer:	ft				
Interval betw een Packers:	24.00 ft				
Tool Length:	45.00 ft				
Number of Packers:	2	Diameter: 6.75 inches			

Tool Comments:

## Tool Description

Tool Description	Length (ft)	Serial No.	Position	Depth (ft)	Accum. Lengths
Change Over Sub	1.00			3443.00	
Shut In Tool	5.00			3448.00	
Hydraulic tool	5.00			3453.00	
Packer	5.00			3458.00	21.00 Bottom Of Top Packer
Packer	5.00			3463.00	
Stubb	1.00			3464.00	
Recorder	0.00	8289	Inside	3464.00	
Recorder	0.00	6668	Outside	3464.00	
Perforations	20.00			3484.00	
Bullnose	3.00			3487.00	24.00 Bottom Packers & Anchor
<b>Total Tool Length:</b>	<b>45.00</b>				



**TRILOBITE  
TESTING, INC**

# DRILL STEM TEST REPORT

**FLUID SUMMARY**

Dow ning-Nelson Oil Co Inc

**26 14s 19w Ellis,KS**

PO Box 1019  
Hays KS 67601

**Sunley-Curtain #1-26**

Job Ticket: 61390

**DST#: 1**

ATTN: Marc Dow ning

Test Start: 2015.01.19 @ 05:30:00

## Mud and Cushion Information

Mud Type: Gel Chem

Cushion Type:

Oil API:

deg API

Mud Weight: 9.00 lb/gal

Cushion Length:

ft

Water Salinity:

ppm

Viscosity: 54.00 sec/qt

Cushion Volume:

bbf

Water Loss: 7.96 in<sup>3</sup>

Gas Cushion Type:

Resistivity: ohm.m

Gas Cushion Pressure:

psig

Salinity: 3000.00 ppm

Filter Cake: 1.00 inches

## Recovery Information

Recovery Table

Length ft	Description	Volume bbf
15.00	OCM 5%o 95%m	0.074

Total Length: 15.00 ft      Total Volume: 0.074 bbf

Num Fluid Samples: 0

Num Gas Bombs: 0

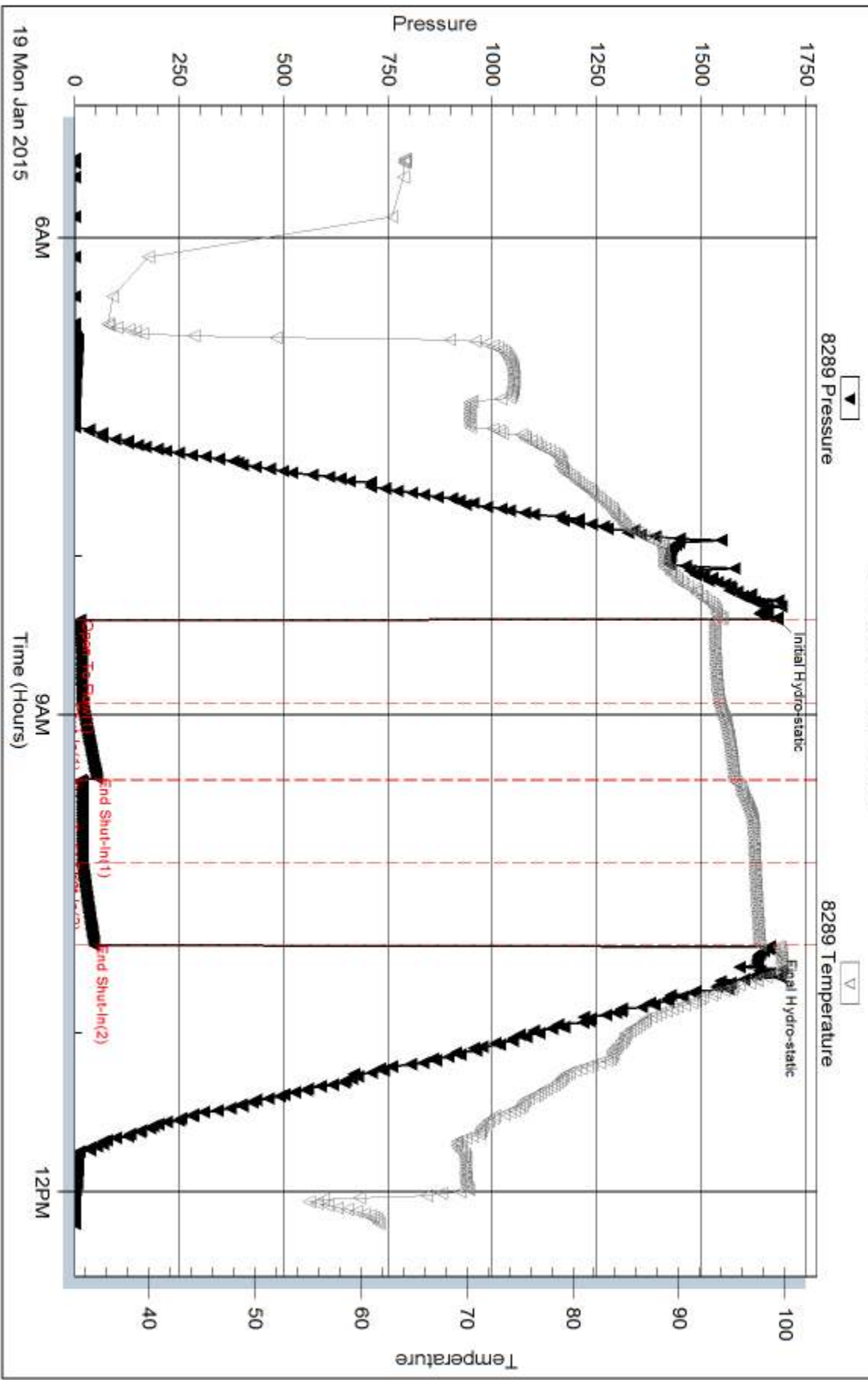
Serial #:

Laboratory Name:

Laboratory Location:

Recovery Comments:

### Pressure vs. Time

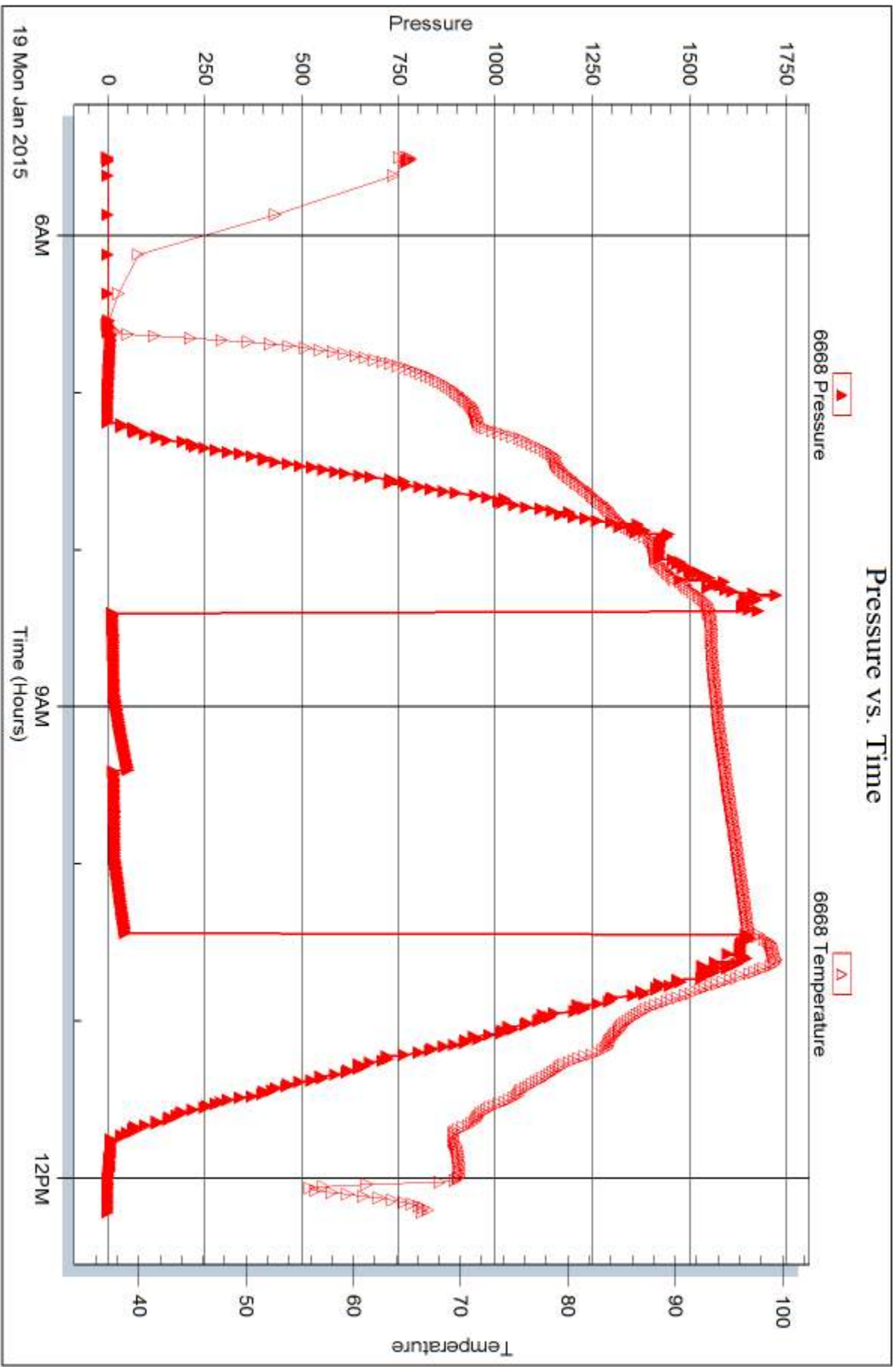


Serial #: 6668

Outside Dow nrg-Nelson Oil Co Inc

Sunley-Curtain #1-26

DST Test Number: 1





## DRILL STEM TEST REPORT

Prepared For: **Downing-Nelson Oil Co Inc**

PO Box 1019  
Hays KS 67601

ATTN: Marc Downing

### **Sunley-Curtain #1-26**

#### **26 14s 19w Ellis,KS**

Start Date: 2015.01.20 @ 10:10:00

End Date: 2015.01.20 @ 17:25:00

Job Ticket #: 61391                      DST #: 2

Trilobite Testing, Inc  
1515 Commerce Parkway Hays, KS 67601  
ph: 785-625-4778 fax: 785-625-5620

Printed: 2015.01.22 @ 09:10:06





**TRILOBITE  
TESTING, INC**

# DRILL STEM TEST REPORT

Dow ning-Nelson Oil Co Inc

**26 14s 19w Ellis,KS**

PO Box 1019  
Hays KS 67601

**Sunley-Curtain #1-26**

ATTN: Marc Dow ning

Job Ticket: 61391

**DST#: 2**

Test Start: 2015.01.20 @ 10:10:00

## GENERAL INFORMATION:

Formation: **Arbuckle**

Deviated: No Whipstock: ft (KB)

Time Tool Opened: 12:23:15

Time Test Ended: 17:25:00

Test Type: Conventional Bottom Hole (Reset)

Tester: Jim Svaty

Unit No: 76

**Interval: 3719.00 ft (KB) To 3754.00 ft (KB) (TVD)**

Reference Elevations: 2115.00 ft (KB)

Total Depth: 3754.00 ft (KB) (TVD)

2107.00 ft (CF)

Hole Diameter: 7.88 inches Hole Condition: Fair

KB to GR/CF: 8.00 ft

**Serial #: 8289 Inside**

Press@RunDepth: 123.08 psig @ 3720.00 ft (KB)

Capacity: 8000.00 psig

Start Date: 2015.01.20 End Date: 2015.01.20

Last Calib.: 2015.01.20

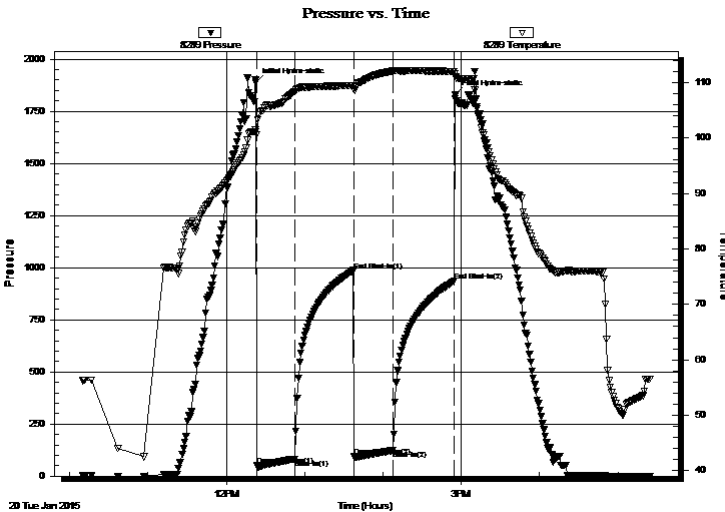
Start Time: 10:10:02 End Time: 17:25:00

Time On Btm: 2015.01.20 @ 12:22:45

Time Off Btm: 2015.01.20 @ 14:55:30

**TEST COMMENT:** 30-IFP- BOB in 10 min.  
45-ISIP- Weak Surface Blow in 25 min.  
30-FFP- BOB in 26 min.  
45-FSIP- Weak Surface Blow in 15 min.

## PRESSURE SUMMARY



Time (Min.)	Pressure (psig)	Temp (deg F)	Annotation
0	1889.35	101.19	Initial Hydro-static
1	49.92	100.55	Open To Flow (1)
30	82.18	108.34	Shut-In(1)
75	986.03	109.42	End Shut-In(1)
76	93.60	108.72	Open To Flow (2)
105	123.08	112.08	Shut-In(2)
152	934.95	112.03	End Shut-In(2)
153	1830.95	111.12	Final Hydro-static

## Recovery

Length (ft)	Description	Volume (bbl)
60.00	OMCW 5%o 20%m 75%w	0.58
63.00	OCM 25%o 75%m	0.88
177.00	CO 100%	2.48

\* Recovery from multiple tests

## Gas Rates

	Choke (inches)	Pressure (psig)	Gas Rate (Mcf/d)



# TRILOBITE TESTING, INC

## DRILL STEM TEST REPORT

Dow ning-Nelson Oil Co Inc

**26 14s 19w Ellis,KS**

PO Box 1019  
Hays KS 67601

**Sunley-Curtain #1-26**

ATTN: Marc Dow ning

Job Ticket: 61391

**DST#: 2**

Test Start: 2015.01.20 @ 10:10:00

### GENERAL INFORMATION:

Formation: **Arbuckle**

Deviated: No Whipstock: ft (KB)

Time Tool Opened: 12:23:15

Time Test Ended: 17:25:00

Test Type: Conventional Bottom Hole (Reset)

Tester: Jim Svaty

Unit No: 76

Interval: **3719.00 ft (KB) To 3754.00 ft (KB) (TVD)**

Total Depth: 3754.00 ft (KB) (TVD)

Hole Diameter: 7.88 inches Hole Condition: Fair

Reference Elevations: 2115.00 ft (KB)

2107.00 ft (CF)

KB to GR/CF: 8.00 ft

**Serial #: 6668 Outside**

Press@RunDepth: psig @ 3720.00 ft (KB)

Start Date: 2015.01.20 End Date: 2015.01.20

Start Time: 10:10:02 End Time: 17:24:45

Capacity: 8000.00 psig

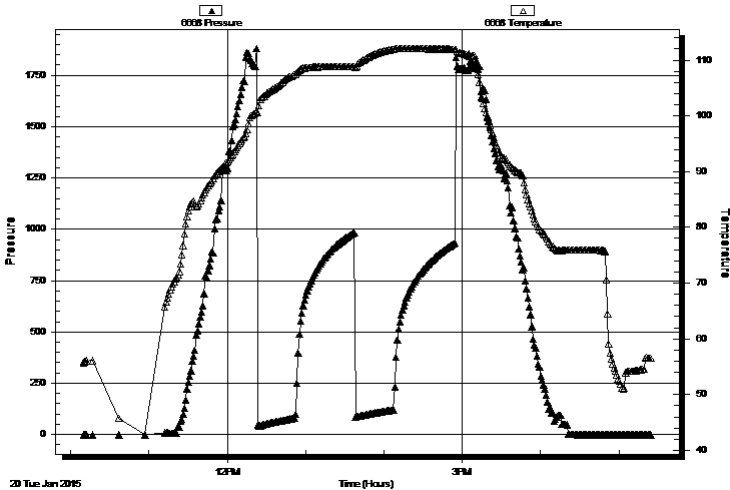
Last Calib.: 2015.01.20

Time On Btm:

Time Off Btm:

TEST COMMENT: 30-IFP- BOB in 10 min.  
45-ISIP- Weak Surface Blow in 25 min.  
30-FFP- BOB in 26 min.  
45-FSIP- Weak Surface Blow in 15 min.

#### Pressure vs. Time



### PRESSURE SUMMARY

Time (Min.)	Pressure (psig)	Temp (deg F)	Annotation

### Recovery

Length (ft)	Description	Volume (bbl)
60.00	OMCW 5%o 20%m 75%w	0.58
63.00	OCM 25%o 75%m	0.88
177.00	CO 100%	2.48

\* Recovery from multiple tests

### Gas Rates

	Choke (inches)	Pressure (psig)	Gas Rate (Mcf/d)



**TRILOBITE  
TESTING, INC**

# DRILL STEM TEST REPORT

**TOOL DIAGRAM**

Dow ning-Nelson Oil Co Inc

**26 14s 19w Ellis,KS**

PO Box 1019  
Hays KS 67601

**Sunley-Curtain #1-26**

Job Ticket: 61391

**DST#: 2**

ATTN: Marc Dow ning

Test Start: 2015.01.20 @ 10:10:00

## Tool Information

Drill Pipe:	Length: 3692.00 ft	Diameter: 3.80 inches	Volume: 51.79 bbl	Tool Weight: 2500.00 lb
Heavy Wt. Pipe:	Length: 0.00 ft	Diameter: 2.75 inches	Volume: 0.00 bbl	Weight set on Packer: 25000.00 lb
Drill Collar:	Length: 29.00 ft	Diameter: 2.25 inches	Volume: 0.14 bbl	Weight to Pull Loose: 46000.00 lb
			<u>Total Volume: 51.93 bbl</u>	Tool Chased 0.00 ft
Drill Pipe Above KB:	23.00 ft			String Weight: Initial 40000.00 lb
Depth to Top Packer:	3719.00 ft			Final 42000.00 lb
Depth to Bottom Packer:	ft			
Interval betw een Packers:	35.00 ft			
Tool Length:	56.00 ft			
Number of Packers:	2	Diameter: 6.75 inches		

Tool Comments:

## Tool Description

Tool Description	Length (ft)	Serial No.	Position	Depth (ft)	Accum. Lengths
Change Over Sub	1.00			3699.00	
Shut In Tool	5.00			3704.00	
Hydraulic tool	5.00			3709.00	
Packer	5.00			3714.00	21.00 Bottom Of Top Packer
Packer	5.00			3719.00	
Stubb	1.00			3720.00	
Recorder	0.00	8289	Inside	3720.00	
Recorder	0.00	6668	Outside	3720.00	
Perforations	31.00			3751.00	
Bullnose	3.00			3754.00	35.00 Bottom Packers & Anchor
<b>Total Tool Length:</b>	<b>56.00</b>				



**TRILOBITE  
TESTING, INC**

# DRILL STEM TEST REPORT

## FLUID SUMMARY

Dow ning-Nelson Oil Co Inc

**26 14s 19w Ellis,KS**

PO Box 1019  
Hays KS 67601

**Sunley-Curtain #1-26**

Job Ticket: 61391

**DST#: 2**

ATTN: Marc Dow ning

Test Start: 2015.01.20 @ 10:10:00

### Mud and Cushion Information

Mud Type: Gel Chem  
Mud Weight: 9.00 lb/gal  
Viscosity: 48.00 sec/qt  
Water Loss: 8.77 in<sup>3</sup>  
Resistivity: ohm.m  
Salinity: 3000.00 ppm  
Filter Cake: 1.00 inches

Cushion Type:  
Cushion Length: ft  
Cushion Volume: bbl  
Gas Cushion Type:  
Gas Cushion Pressure: psig

Oil API: 23 deg API  
Water Salinity: 27000 ppm

### Recovery Information

Recovery Table

Length ft	Description	Volume bbl
60.00	OMCW 5%o 20%m 75%w	0.577
63.00	OCM 25%o 75%m	0.884
177.00	CO 100%	2.483

Total Length: 300.00 ft      Total Volume: 3.944 bbl

Num Fluid Samples: 0

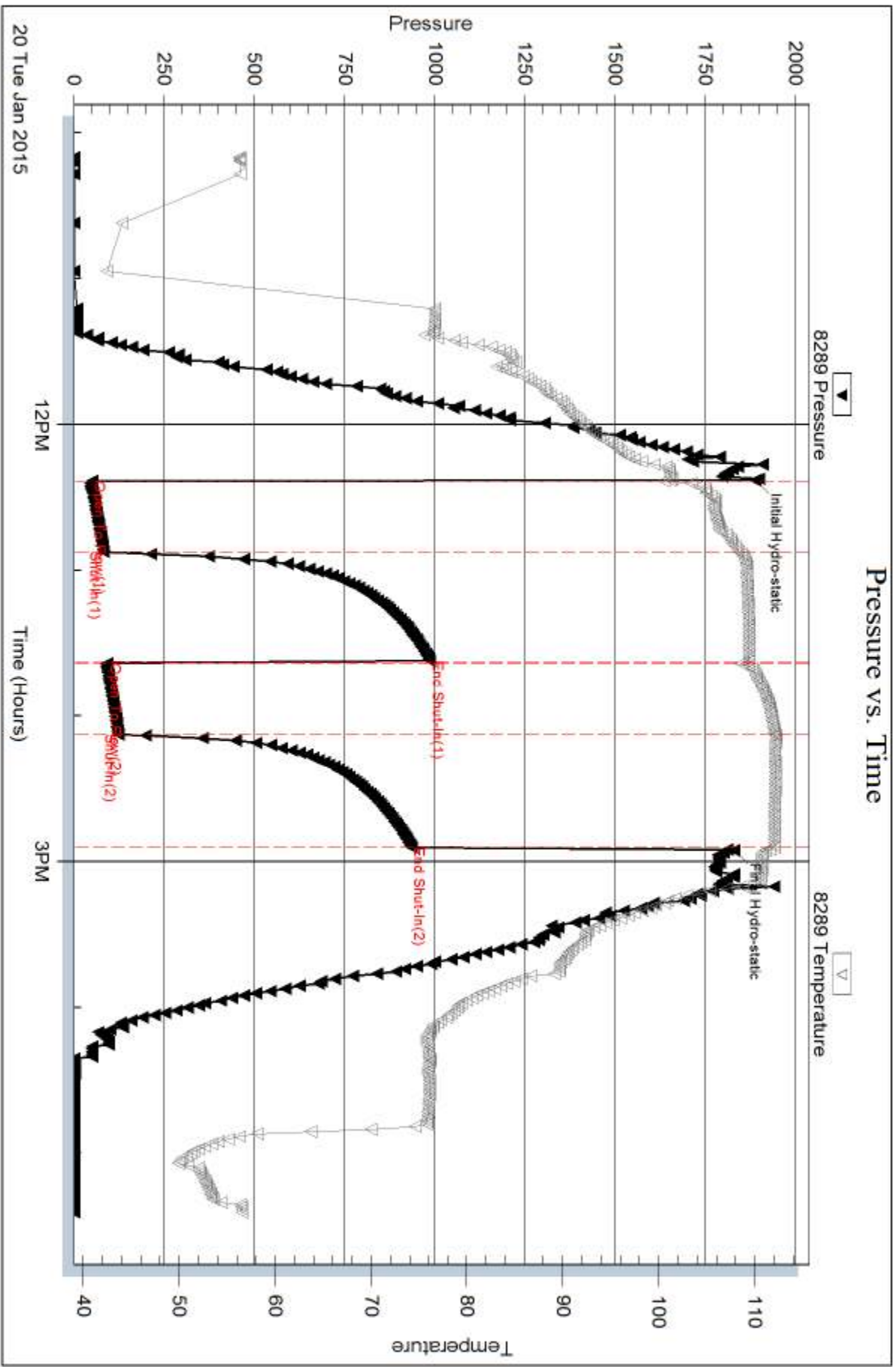
Num Gas Bombs: 0

Serial #:

Laboratory Name:

Laboratory Location:

Recovery Comments: .338 @ 52

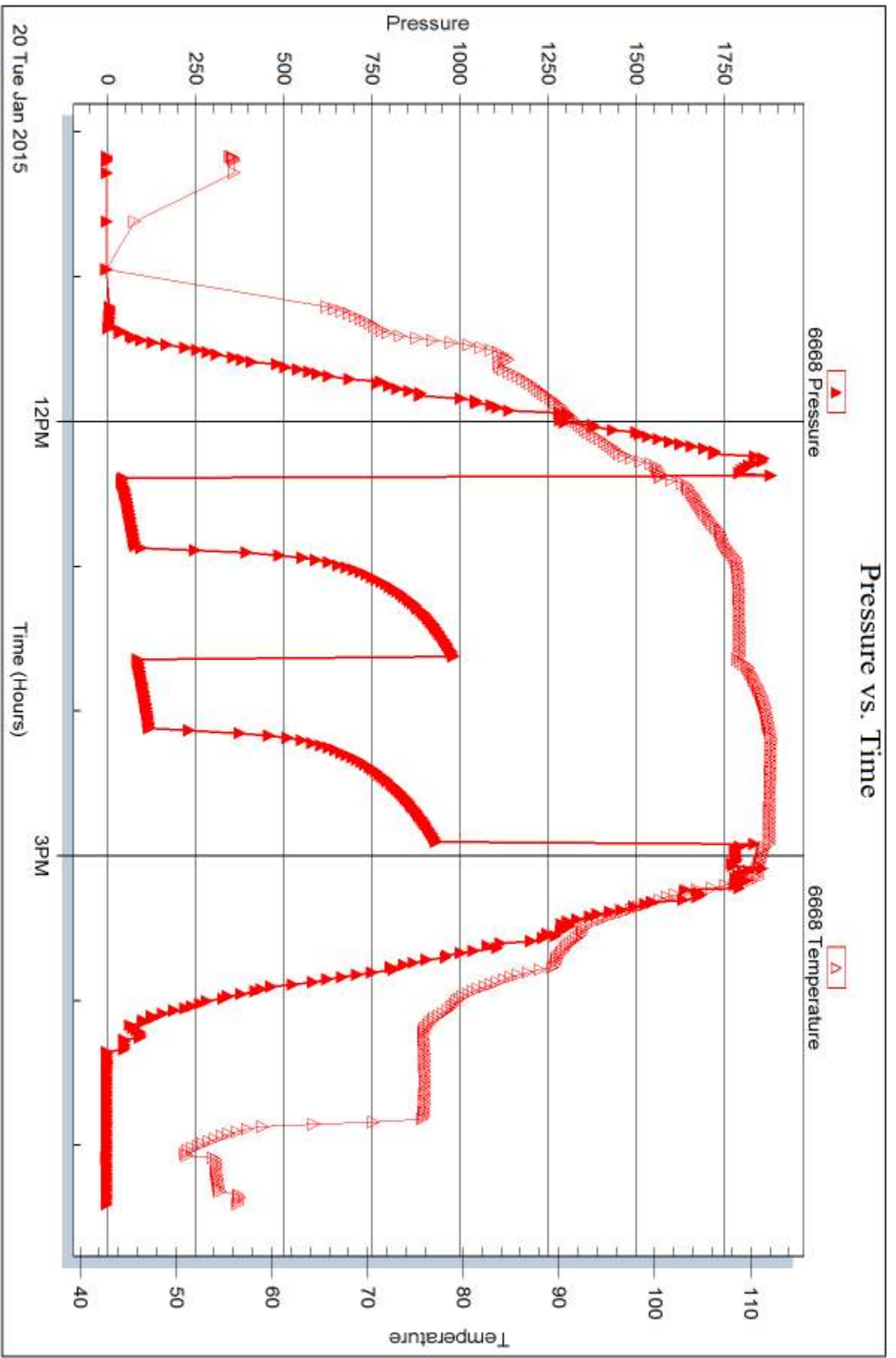


Serial #: 6668

Outside Dow nng-Nelson Oil Co Inc

Sunley-Curtain #1-26

DST Test Number: 2



Trilobite Testing, Inc

Ref. No: 61391

Printed: 2015.01.22 @ 09:10:07



## DRILL STEM TEST REPORT

Prepared For: **Downing-Nelson Oil Co Inc**

PO Box 1019  
Hays KS 67601

ATTN: Marc Downing

### **Sunley-Curtain #1-26**

#### **26 14s 19w Ellis,KS**

Start Date: 2015.01.21 @ 07:59:00

End Date: 2015.01.21 @ 15:11:00

Job Ticket #: 61392                      DST #: 3

Trilobite Testing, Inc  
1515 Commerce Parkway Hays, KS 67601  
ph: 785-625-4778 fax: 785-625-5620

Printed: 2015.01.22 @ 09:09:12



**TRILOBITE  
TESTING, INC**

# DRILL STEM TEST REPORT

Dow ning-Nelson Oil Co Inc

**26 14s 19w Ellis,KS**

PO Box 1019  
Hays KS 67601

**Sunley-Curtain #1-26**

Job Ticket: 61392

**DST#: 3**

ATTN: Marc Dow ning

Test Start: 2015.01.21 @ 07:59:00

## GENERAL INFORMATION:

Formation: **Arbuckle**

Deviated: No Whipstock: ft (KB)

Time Tool Opened: 09:50:00

Time Test Ended: 15:11:00

Test Type: Conventional Straddle (Reset)

Tester: Jim Svaty

Unit No: 76

**Interval: 3752.00 ft (KB) To 3761.00 ft (KB) (TVD)**

Reference Elevations: 2115.00 ft (KB)

Total Depth: 3834.00 ft (KB) (TVD)

2107.00 ft (CF)

Hole Diameter: 7.88 inches Hole Condition: Fair

KB to GR/CF: 8.00 ft

**Serial #: 8289 Outside**

Press@RunDepth: 227.41 psig @ 3753.00 ft (KB)

Capacity: 8000.00 psig

Start Date: 2015.01.21

End Date:

2015.01.21

Last Calib.:

2015.01.21

Start Time: 07:59:02

End Time:

15:11:00

Time On Btm:

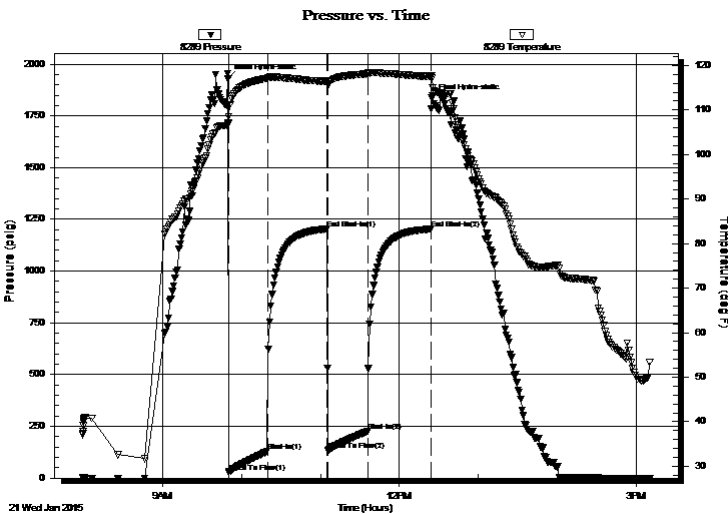
2015.01.21 @ 09:49:45

Time Off Btm:

2015.01.21 @ 12:24:30

**TEST COMMENT:** 30-IFP- BOB in 9 1/2 min.  
45-ISIP- Very Weak Surface Blow in 9 min.  
30-FFP- BOB in 11 min.  
45-FSIP- Very Weak Surface Blow in 18 min.

## PRESSURE SUMMARY



Time (Min.)	Pressure (psig)	Temp (deg F)	Annotation
0	1929.77	107.18	Initial Hydro-static
1	27.40	107.00	Open To Flow (1)
30	128.83	117.12	Shut-In(1)
76	1204.35	116.40	End Shut-In(1)
76	134.49	115.78	Open To Flow (2)
107	227.41	118.12	Shut-In(2)
155	1203.93	117.49	End Shut-In(2)
155	1835.10	117.14	Final Hydro-static

## Recovery

Length (ft)	Description	Volume (bbl)
440.00	MCW 2% m 98% w	5.91
25.00	Oil Scum MCW 25% m 75% w	0.35
5.00	Heavy CO 100%	0.07

\* Recovery from multiple tests

## Gas Rates

	Choke (inches)	Pressure (psig)	Gas Rate (Mcf/d)







**TRILOBITE  
TESTING, INC**

# DRILL STEM TEST REPORT

Dow ning-Nelson Oil Co Inc

**26 14s 19w Ellis,KS**

PO Box 1019  
Hays KS 67601

**Sunley-Curtain #1-26**

Job Ticket: 61392

**DST#: 3**

ATTN: Marc Dow ning

Test Start: 2015.01.21 @ 07:59:00

## GENERAL INFORMATION:

Formation: **Arbuckle**

Deviated: No Whipstock: ft (KB)

Time Tool Opened: 09:50:00

Time Test Ended: 15:11:00

Test Type: Conventional Straddle (Reset)

Tester: Jim Svaty

Unit No: 76

**Interval: 3752.00 ft (KB) To 3761.00 ft (KB) (TVD)**

Reference Elevations: 2115.00 ft (KB)

Total Depth: 3834.00 ft (KB) (TVD)

2107.00 ft (CF)

Hole Diameter: 7.88 inches Hole Condition: Fair

KB to GR/CF: 8.00 ft

**Serial #: 8789 Below (Straddle)**

Press@RunDepth: psig @ 3766.00 ft (KB)

Capacity: 8000.00 psig

Start Date: 2015.01.21

End Date:

2015.01.21

Last Calib.:

2015.01.21

Start Time: 07:59:02

End Time:

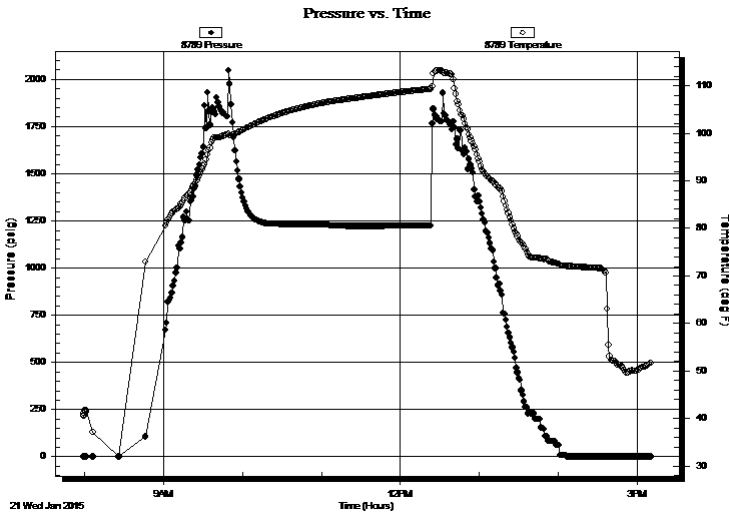
15:10:45

Time On Btm:

Time Off Btm:

**TEST COMMENT:** 30-IFP- BOB in 9 1/2 min.  
45-ISIP- Very Weak Surface Blow in 9 min.  
30-FFP- BOB in 11 min.  
45-FSIP- Very Weak Surface Blow in 18 min.

## PRESSURE SUMMARY



Time (Min.)	Pressure (psig)	Temp (deg F)	Annotation

## Recovery

Length (ft)	Description	Volume (bbl)
440.00	MCW 2% m 98% w	5.91
25.00	Oil Scum MCW 25% m 75% w	0.35
5.00	Heavy CO 100%	0.07

\* Recovery from multiple tests

## Gas Rates

Choke (inches)	Pressure (psig)	Gas Rate (Mcf/d)



**TRILOBITE  
TESTING, INC**

# DRILL STEM TEST REPORT

**TOOL DIAGRAM**

Dow ning-Nelson Oil Co Inc

**26 14s 19w Ellis,KS**

PO Box 1019  
Hays KS 67601

**Sunley-Curtain #1-26**

Job Ticket: 61392

**DST#: 3**

ATTN: Marc Dow ning

Test Start: 2015.01.21 @ 07:59:00

## Tool Information

Drill Pipe:	Length: 3724.00 ft	Diameter: 3.80 inches	Volume: 52.24 bbl	Tool Weight: 2500.00 lb
Heavy Wt. Pipe:	Length: 0.00 ft	Diameter: 2.75 inches	Volume: 0.00 bbl	Weight set on Packer: 25000.00 lb
Drill Collar:	Length: 29.00 ft	Diameter: 2.25 inches	Volume: 0.14 bbl	Weight to Pull Loose: 50000.00 lb
			<u>Total Volume: 52.38 bbl</u>	Tool Chased 0.00 ft
Drill Pipe Above KB:	22.00 ft			String Weight: Initial 44000.00 lb
Depth to Top Packer:	3752.00 ft			Final 46000.00 lb
Depth to Bottom Packer:	3761.00 ft			
Interval betw een Packers:	9.00 ft			
Tool Length:	102.00 ft			
Number of Packers:	2	Diameter: 6.75 inches		

Tool Comments:

## Tool Description

**Length (ft) Serial No. Position Depth (ft) Accum. Lengths**

Tool Description	Length (ft)	Serial No.	Position	Depth (ft)	Accum. Lengths
Change Over Sub	1.00			3732.00	
Shut In Tool	5.00			3737.00	
Hydraulic tool	5.00			3742.00	
Packer	5.00			3747.00	21.00 Bottom Of Top Packer
Packer	5.00			3752.00	
Stubb	1.00			3753.00	
Recorder	0.00	6668	Inside	3753.00	
Recorder	0.00	8289	Outside	3753.00	
Perforations	4.00			3757.00	
Blank Off Sub	1.00			3758.00	
Blank Spacing	3.00			3761.00	9.00 Tool Interval
Packer	1.00			3762.00	
Perforations	3.00			3765.00	
Change Over Sub	1.00			3766.00	
Recorder	0.00	8789	Below	3766.00	
Blank Spacing	63.00			3829.00	
Change Over Sub	1.00			3830.00	
Bullnose	3.00			3833.00	72.00 Bottom Packers & Anchor

**Total Tool Length: 102.00**



**TRILOBITE  
TESTING, INC**

# DRILL STEM TEST REPORT

## FLUID SUMMARY

Dow ning-Nelson Oil Co Inc

**26 14s 19w Ellis,KS**

PO Box 1019  
Hays KS 67601

**Sunley-Curtain #1-26**

Job Ticket: 61392

**DST#: 3**

ATTN: Marc Dow ning

Test Start: 2015.01.21 @ 07:59:00

### Mud and Cushion Information

Mud Type: Gel Chem

Cushion Type:

Oil API:

19 deg API

Mud Weight: 9.00 lb/gal

Cushion Length:

ft

Water Salinity:

26000 ppm

Viscosity: 48.00 sec/qt

Cushion Volume:

bbbl

Water Loss: 8.78 in<sup>3</sup>

Gas Cushion Type:

Resistivity: ohm.m

Gas Cushion Pressure:

psig

Salinity: 3000.00 ppm

Filter Cake: 1.00 inches

### Recovery Information

Recovery Table

Length ft	Description	Volume bbl
440.00	MCW 2% <sub>m</sub> 98% <sub>w</sub>	5.908
25.00	Oil Scum MCW 25% <sub>m</sub> 75% <sub>w</sub>	0.351
5.00	Heavy CO 100%	0.070

Total Length: 470.00 ft

Total Volume: 6.329 bbl

Num Fluid Samples: 0

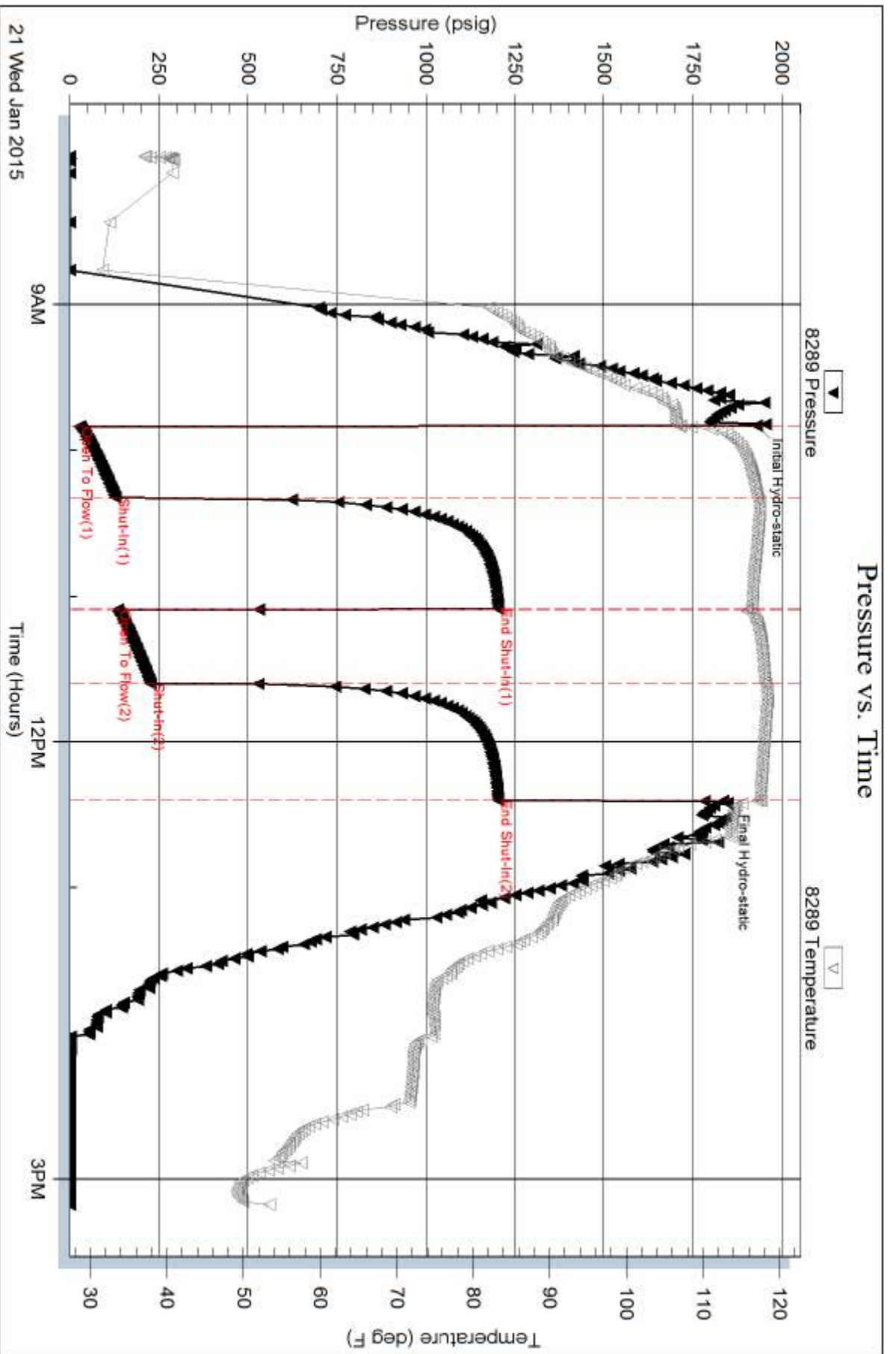
Num Gas Bombs: 0

Serial #:

Laboratory Name:

Laboratory Location:

Recovery Comments: .368 @ 50



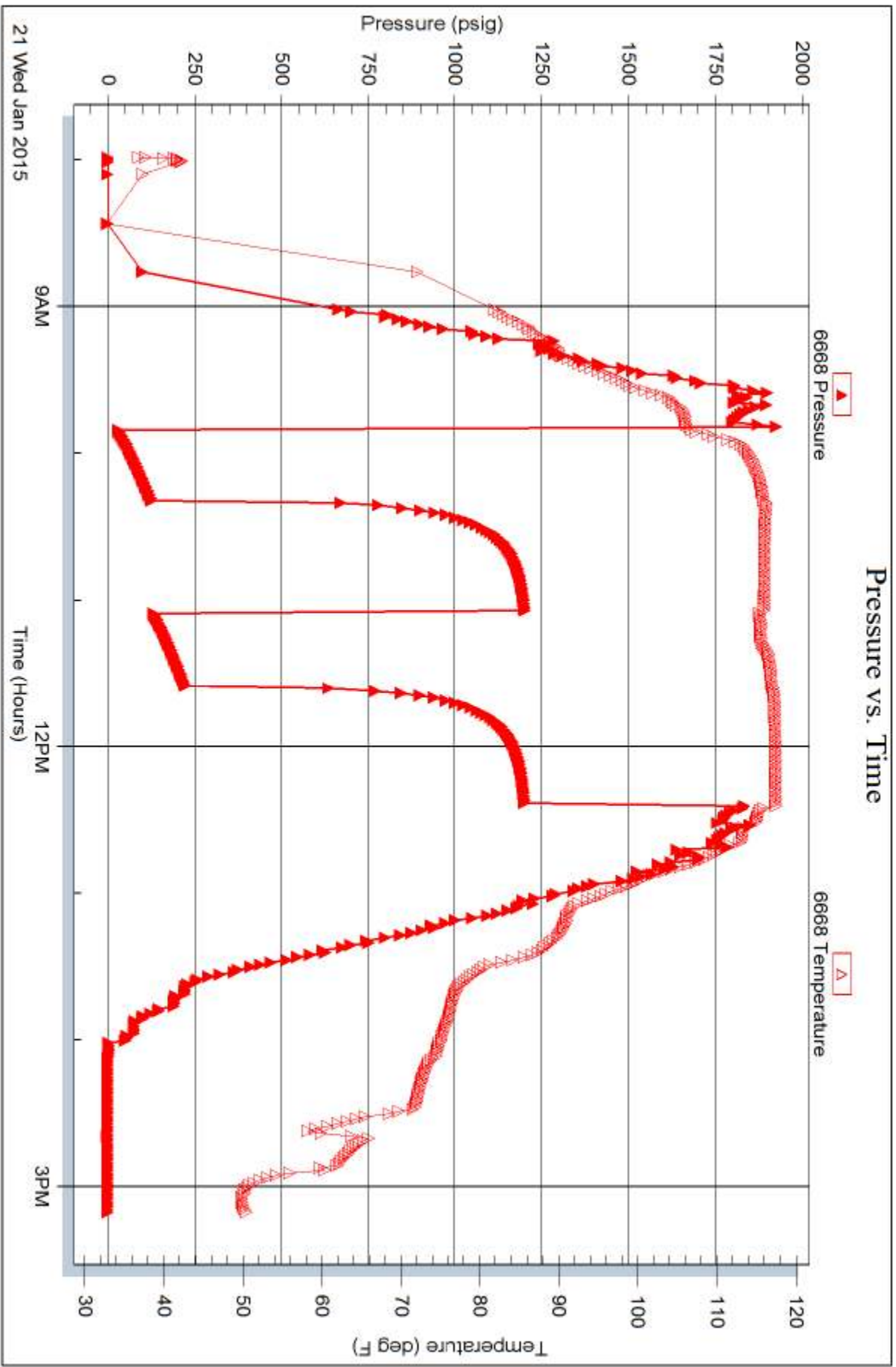
Serial #: 6668

Inside

Dow nrg-Nelson Oil Co Inc

Sunley-Curtain #1-26

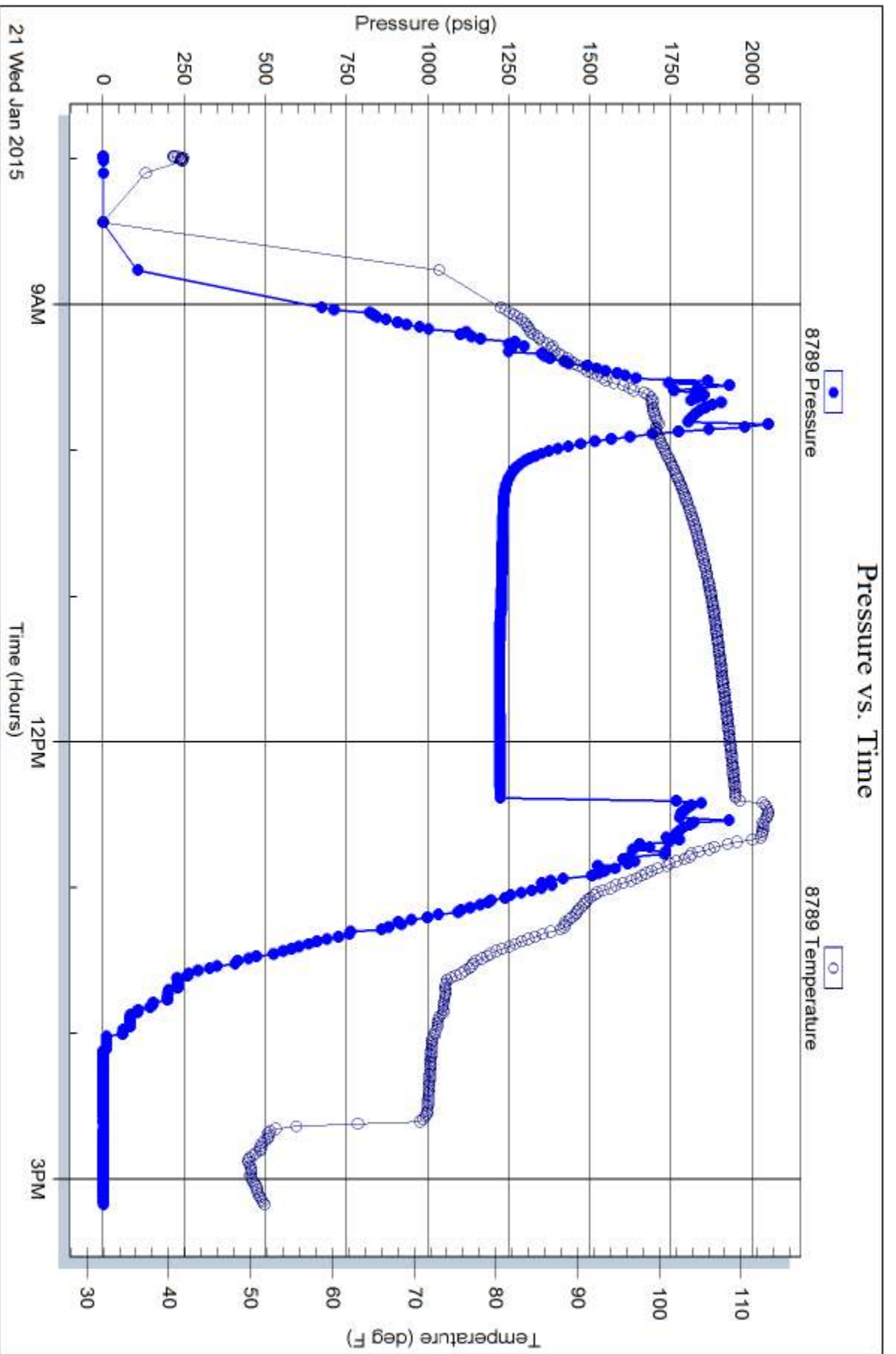
DST Test Number: 3



Trilobite Testing, Inc

Ref. No: 61392

Printed: 2015.01.22 @ 09:09:14





# TRILOBITE TESTING INC.

1515 Commerce Parkway • Hays, Kansas 67601

## Test Ticket

NO. 61390

4/10

Well Name & No. Sunley - CURTAIN 1-26 Test No. 1 Date 1-19-15  
 Company Downing-Nelson Oil Co INC. Elevation 2115 KB 2107 GL  
 Address P.O. Box 1019 HAYS KS 67601  
 Co. Rep / Geo. MARC DOWNING Rig Discovery #1  
 Location: Sec. 26 Twp. 14<sup>s</sup> Rge. 19<sup>w</sup> Co. ELLIS State KS

Interval Tested 3463-3487 Zone Tested LKC "D"  
 Anchor Length 24 Drill Pipe Run 3438 Mud Wt. 9.2  
 Top Packer Depth 3458 Drill Collars Run 29 Vis 54  
 Bottom Packer Depth 3463 Wt. Pipe Run 0 WL 8  
 Total Depth 3487 Chlorides 3000 ppm System LCM 1

Blow Description IFP - Surface Blow Building to 1 in.  
ISIP - No Blow  
FFP - Surface Blow Building to 1/2 in.  
FSIP - No Blow

Rec	Feet of	%gas	%oil	%water	%mud
<u>15</u>	<u>OCM</u>	<u>5</u>		<u>95</u>	
Rec	Feet of	%gas	%oil	%water	%mud
Rec	Feet of	%gas	%oil	%water	%mud
Rec	Feet of	%gas	%oil	%water	%mud

Rec Total 15 BHT 99 Gravity \_\_\_\_\_ API RW \_\_\_\_\_ @ \_\_\_\_\_ ° F Chlorides \_\_\_\_\_ ppm

(A) Initial Hydrostatic	<u>1681</u>
(B) First Initial Flow	<u>13</u>
(C) First Final Flow	<u>18</u>
(D) Initial Shut-In	<u>53</u>
(E) Second Initial Flow	<u>15</u>
(F) Second Final Flow	<u>19</u>
(G) Final Shut-In	<u>47</u>
(H) Final Hydrostatic	<u>1662</u>

Test 1050  
 Jars \_\_\_\_\_  
 Safety Joint \_\_\_\_\_  
 Circ Sub \_\_\_\_\_  
 Hourly Standby \_\_\_\_\_  
 Mileage 22 22 RT  
 Sampler \_\_\_\_\_  
 Straddle \_\_\_\_\_  
 Shale Packer \_\_\_\_\_  
 Extra Packer \_\_\_\_\_  
 Extra Recorder \_\_\_\_\_  
 Day Standby \_\_\_\_\_  
 Accessibility \_\_\_\_\_  
 Sub Total 1072

T-On Location 04:11  
 T-Started 05:30  
 T-Open 08:24  
 T-Pulled 10:24  
 T-Out 12:13  
 Comments \_\_\_\_\_  
 Ruined Shale Packer \_\_\_\_\_  
 Ruined Packer \_\_\_\_\_  
 Extra Copies \_\_\_\_\_  
 Sub Total 0  
 Total 1072  
 MP/DST Disc't \_\_\_\_\_

Initial Open 30  
 Initial Shut-In 30  
 Final Flow 30  
 Final Shut-In 30

Approved By \_\_\_\_\_ Our Representative [Signature]

Trilobite Testing Inc. shall not be liable for damaged of any kind of the property or personnel of the one for whom a test is made, or for any loss suffered or sustained, directly or indirectly, through the use of its equipment, or its statements or opinion concerning the results of any test, tools lost or damaged in the hole shall be paid for at cost by the party for whom the test is made.





# TRILOBITE TESTING INC.

1515 Commerce Parkway • Hays, Kansas 67601

## Test Ticket

NO. 61391

4/10

Well Name & No. Sunley - Curtain 1-26 Test No. 2 Date 1-20-15  
 Company Downing - Nelson Oil Co. Inc. Elevation 2115 KB 2107 GL  
 Address P.O. Box 7019 Hays KS 67601  
 Co. Rep / Geo. MARC DOWNING Rig Discovery #1  
 Location: Sec. 26 Twp. 14S Rge. 19W Co. Ellis State KS

Interval Tested 3719-3754 Zone Tested Arbuckle  
 Anchor Length 35 Drill Pipe Run 3692 Mud Wt. 9.1  
 Top Packer Depth 3714 Drill Collars Run 29 Vis 48  
 Bottom Packer Depth 3719 Wt. Pipe Run 0 WL 8.8  
 Total Depth 3754 Chlorides 3000 ppm System LCM 1

Blow Description IFP - BOB in 10min.  
TSIP - Weak Surface Blow in 25min.  
FFP - BOB in 26min.  
FSIP - Weak Surface Blow in 15min.

Rec	Feet of	%gas	%oil	%water	%mud
<u>60</u>	<u>OMCW</u>	<u>5</u>	<u>75</u>	<u>20</u>	
<u>63</u>	<u>OCM</u>	<u>25</u>		<u>75</u>	
<u>177</u>	<u>CO</u>	<u>100</u>			
	<u>70 SIP</u>				

Rec Total 300 BHT 112 Gravity 23 API RW .338 @ 52 ° F Chlorides 27000 ppm

(A) Initial Hydrostatic 1889  Test 1050 T-On Location 9:10  
 (B) First Initial Flow 49  Jars \_\_\_\_\_ T-Started 10:10  
 (C) First Final Flow 82  Safety Joint \_\_\_\_\_ T-Open 12:23  
 (D) Initial Shut-In 986  Circ Sub \_\_\_\_\_ T-Pulled 14:53  
 (E) Second Initial Flow 93  Hourly Standby \_\_\_\_\_ T-Out 17:25  
 (F) Second Final Flow 123  Mileage 22 Comments \_\_\_\_\_  
 (G) Final Shut-In 934  Sampler \_\_\_\_\_  
 (H) Final Hydrostatic 1830  Straddle \_\_\_\_\_  
 Ruined Shale Packer \_\_\_\_\_

Initial Open 30  Shale Packer \_\_\_\_\_  
 Initial Shut-In 45  Extra Packer \_\_\_\_\_  
 Final Flow 30  Extra Recorder \_\_\_\_\_ Sub Total 0  
 Final Shut-In 45  Day Standby \_\_\_\_\_ Total 1072  
 Accessibility \_\_\_\_\_ MP/DST Disc't \_\_\_\_\_  
 Sub Total 1072

Approved By \_\_\_\_\_ Our Representative [Signature]

Trilobite Testing Inc. shall not be liable for damaged of any kind of the property or personnel of the one for whom a test is made, or for any loss suffered or sustained, directly or indirectly, through the use of its equipment, or its statements or opinion concerning the results of any test, tools lost or damaged in the hole shall be paid for at cost by the party for whom the test is made.



# TRILOBITE TESTING INC.

1515 Commerce Parkway • Hays, Kansas 67601

## Test Ticket

NO. 61392

4/10

Well Name & No. Sunley-Curtain 1-26 Test No. 3 Date 1-21-15  
 Company Downing-Nelson Oil Co. Inc. Elevation 2115 KB 2107 GL  
 Address P.O. Box 1019 Hays KS 67601  
 Co. Rep / Geo. Marc Downing Rig Discovery #1  
 Location: Sec. 26 Twp. 14S Rge. 19W Co. Ellis State KS

Interval Tested 3752-3761 Zone Tested Arbuckle  
 Anchor Length 9 Andur-73TP Drill Pipe Run 3724 Mud Wt. 9.1  
 Top Packer Depth 3752 Drill Collars Run 29 Vis 48  
 Bottom Packer Depth 3761 Wt. Pipe Run 0 WL 8.8  
 Total Depth 3834 TD Chlorides 3000 ppm System LCM 1

Blow Description IFP - BOB in 9 1/2 min.  
ISIP - Very Weak Surface Blow in 9 min.  
FFP - BOB in 11 min.  
FSIP - Very Weak Surface Blow in 18 min.

Rec	Feet of	%gas	%oil	%water	%mud
<u>440</u>	<u>MCW</u>		<u>98</u>	<u>2</u>	
<u>25</u>	<u>Oil Seum MCW</u>		<u>75</u>	<u>25</u>	
<u>5</u>	<u>Heavy CO</u>	<u>100</u>			

Rec Total 470 BHT 117 Gravity 19 API RW 368 @ 50 °F Chlorides 26000 ppm

(A) Initial Hydrostatic 1929  Test 1050 T-On Location 07:57  
 (B) First Initial Flow 27  Jars \_\_\_\_\_ T-Started 07:59  
 (C) First Final Flow 128  Safety Joint \_\_\_\_\_ T-Open 09:50  
 (D) Initial Shut-In 1204  Circ Sub \_\_\_\_\_ T-Pulled 12:20  
 (E) Second Initial Flow 134  Hourly Standby \_\_\_\_\_ T-Out 15:11  
 (F) Second Final Flow 227  Mileage 22 Comments \_\_\_\_\_  
 (G) Final Shut-In 1203  Sampler \_\_\_\_\_  
 (H) Final Hydrostatic 1835  Straddle 600  Ruined Shale Packer \_\_\_\_\_

Initial Open 30  Shale Packer \_\_\_\_\_  
 Initial Shut-In 45  Extra Packer \_\_\_\_\_  
 Final Flow 30  Extra Recorder \_\_\_\_\_ Sub Total 0  
 Final Shut-In 45  Day Standby \_\_\_\_\_ Total 1672  
 Accessibility \_\_\_\_\_ MP/DST Disc't \_\_\_\_\_  
 Sub Total 1672

Approved By \_\_\_\_\_ Our Representative [Signature]

Trilobite Testing Inc. shall not be liable for damaged of any kind of the property or personnel of the one for whom a test is made, or for any loss suffered or sustained, directly or indirectly, through the use of its equipment, or its statements or opinion concerning the results of any test, tools lost or damaged in the hole shall be paid for at cost by the party for whom the test is made.