

L.D. DRILLING, INC.
DARREL LEASE
SW.1/4, SECTION 31, T14S, R29W
GOVE COUNTY, KANSAS

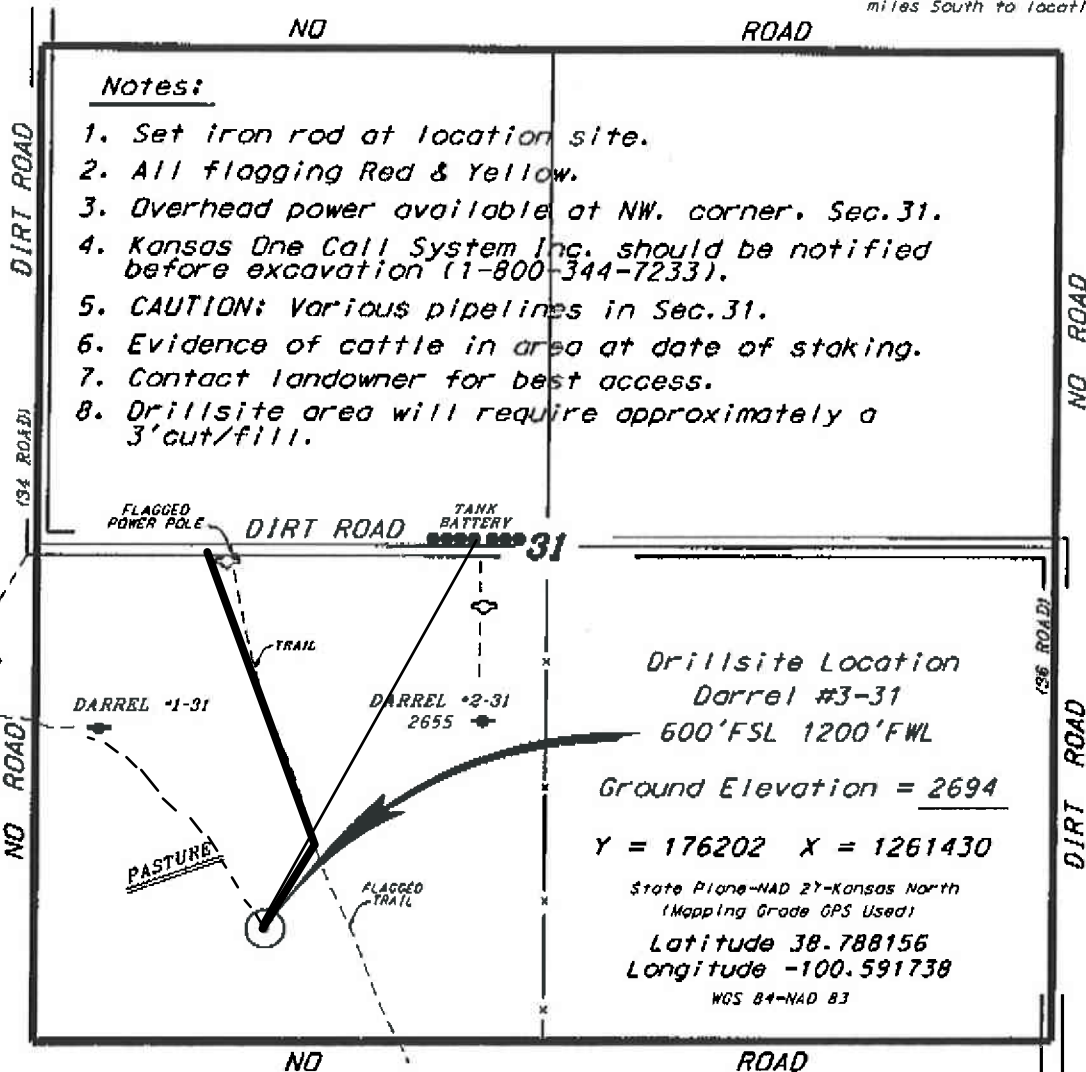
Directions:

From the intersection of Highway 23 and a E-W county road in Gove, Kansas, go 5.70 miles West to a three-way intersection, then go 11.0 miles South on a county road to the NW. corner of Section 31, then go 0.50 miles South, then go 0.22 miles East, then go 0.38 miles South to location.

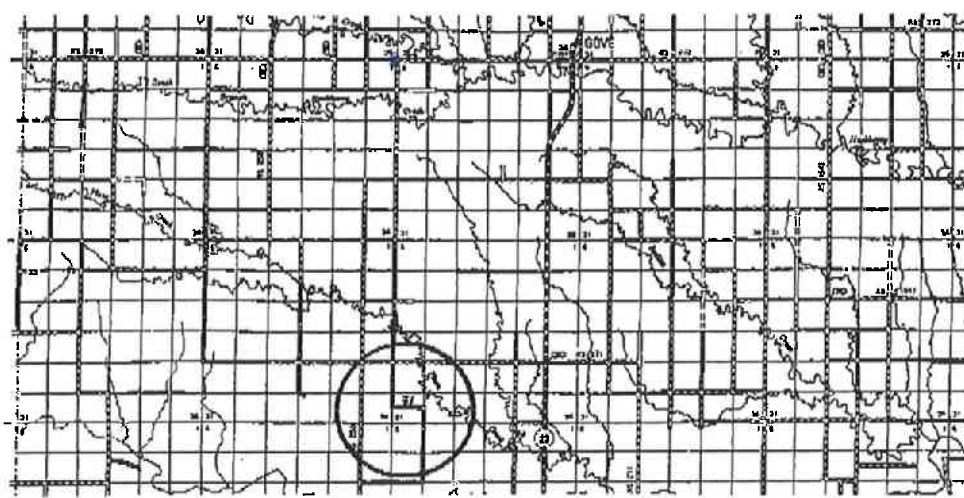
Notes:

1. Set iron rod at location site.
2. All flagging Red & Yellow.
3. Overhead power available at NW. corner. Sec.31.
4. Kansas One Call System Inc. should be notified before excavation (1-800-344-7233).
5. CAUTION: Various pipelines in Sec.31.
6. Evidence of cattle in area at date of staking.
7. Contact landowner for best access.
8. Drillsite area will require approximately a 3'cut/fill.

*Ingress and egress to location as shown on this plat is for usage only and may not be legally opened for public use. Contact landowner, tenant and county road department for access.



Drillsite Location
Darrel #3-31
600'FSL 1200'FWL
Ground Elevation = 2694
Y = 176202 X = 1261430
 State Plane-NAD 27-Kansas North
 (Mapping Grade GPS Used)
Latitude 38.788156
Longitude -100.591738
 WGS 84-NAD 83



Controlling data is based upon the best maps and photographs available to us and upon a regular section of land containing 640 acres.
 Approximate section lines were determined using the normal standard of care of oilfield surveyors practicing in the state of Kansas. The section corners, which establish the precise section lines, were not necessarily located, and the exact location of the drillsite location in the section is not guaranteed. Therefore, the operator securing this service and accepting this plat and all other parties relying thereon agree to hold Central Kansas Oilfield Services, Inc., its officers and employees harmless from all losses, costs and expenses and void entities released from any liability from incidental or consequential damages.
 Elevations derived from National Geodetic Vertical Datum.

Date January 28, 2015