



TRILOBITE TESTING, INC

DRILL STEM TEST REPORT

American Patriot Oil, LLC

Sec. 16-8s-19w Rooks, KS

10940 S Parker Rd
Suite 765
Parker, CO 80134
ATTN: Roger Martin

Lowry #2

Job Ticket: 60995

DST#: 1

Test Start: 2014.12.17 @ 07:00:00

GENERAL INFORMATION:

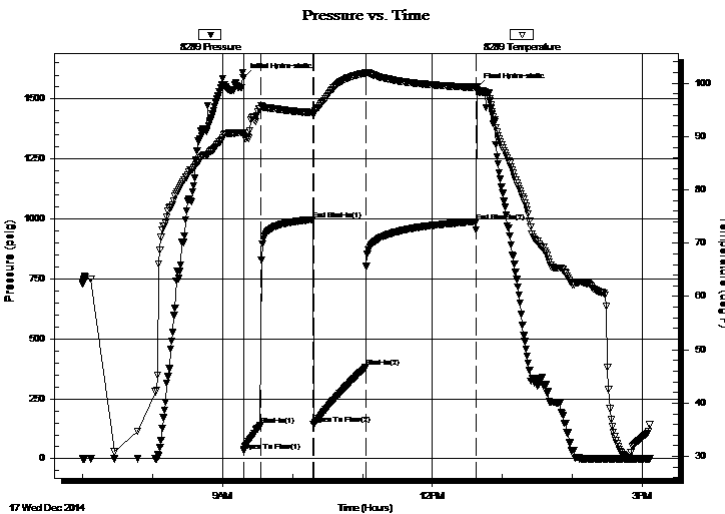
Formation: **LKC "A-F"**
 Deviated: No Whipstock: ft (KB)
 Test Type: Conventional Bottom Hole (Initial)
 Time Tool Opened: 09:18:00
 Tester: Phillip Gage - Jim S
 Time Test Ended: 15:07:00
 Unit No: 76
 Interval: **3225.00 ft (KB) To 3324.00 ft (KB) (TVD)**
 Reference Elevations: 2037.00 ft (KB)
 Total Depth: 3324.00 ft (KB) (TVD)
 2030.00 ft (CF)
 Hole Diameter: 7.88 inches
 Hole Condition: Fair
 KB to GR/CF: 7.00 ft

Serial #: 8289 Outside

Press@RunDepth: 381.14 psig @ 3226.00 ft (KB) Capacity: 8000.00 psig
 Start Date: 2014.12.17 End Date: 2014.12.17 Last Calib.: 2014.12.17
 Start Time: 07:00:02 End Time: 15:07:00 Time On Btm: 2014.12.17 @ 09:17:45
 Time Off Btm: 2014.12.17 @ 12:38:00

TEST COMMENT: 15-IFP- BOB in 3 1/2min.
 45-ISIP- No Blow
 45-FFP- BOB in 4min.
 90-FSIP- No Blow

PRESSURE SUMMARY



Time (Min.)	Pressure (psig)	Temp (deg F)	Annotation
0	1590.13	90.72	Initial Hydro-static
1	33.56	90.13	Open To Flow (1)
15	138.67	95.36	Shut-In(1)
60	997.63	94.48	End Shut-In(1)
61	143.06	94.19	Open To Flow (2)
105	381.14	101.90	Shut-In(2)
200	988.96	99.21	End Shut-In(2)
201	1549.54	99.13	Final Hydro-static

Recovery

Length (ft)	Description	Volume (bbl)
378.00	MCW 20% m 80% w	5.03
315.00	MCW 40% m 60% w	4.42
88.00	Mud 100%	1.23

Gas Rates

	Choke (inches)	Pressure (psig)	Gas Rate (Mcf/d)



**TRILOBITE
TESTING, INC**

DRILL STEM TEST REPORT

FLUID SUMMARY

American Patriot Oil, LLC

Sec. 16-8s-19w Rooks, KS

10940 S Parker Rd
Suite 765
Parker, CO 80134
ATTN: Roger Martin

Lowry #2

Job Ticket: 60995

DST#: 1

Test Start: 2014.12.17 @ 07:00:00

Mud and Cushion Information

Mud Type: Gel Chem

Mud Weight: 9.00 lb/gal

Viscosity: 57.00 sec/qt

Water Loss: 7.60 in³

Resistivity: ohm.m

Salinity: 1700.00 ppm

Filter Cake: 2.00 inches

Cushion Type:

Cushion Length: ft

Cushion Volume: bbl

Gas Cushion Type:

Gas Cushion Pressure: psig

Oil API:

deg API

Water Salinity: 45000 ppm

Recovery Information

Recovery Table

Length ft	Description	Volume bbl
378.00	MCW 20%m 80%w	5.029
315.00	MCW 40%m 60%w	4.419
88.00	Mud 100%	1.234

Total Length: 781.00 ft Total Volume: 10.682 bbl

Num Fluid Samples: 0

Num Gas Bombs: 0

Serial #:

Laboratory Name:

Laboratory Location:

Recovery Comments: .344 @ 34

