



**TRILOBITE TESTING, INC**

# DRILL STEM TEST REPORT

American Patriot Oil, LLC

**Sec. 16-8s-19w Rooks, KS**

10940 S Parker Rd  
Suite 765  
Parker, CO 80134  
ATTN: Roger Martin

**Lowry #2**

Job Ticket: 61382

**DST#: 2**

Test Start: 2014.12.18 @ 05:34:00

## GENERAL INFORMATION:

Formation: **LKC " G - L "**

Deviated: No Whipstock: ft (KB)

Time Tool Opened: 07:47:45

Time Test Ended: 13:20:00

Test Type: Conventional Bottom Hole (Reset)

Tester: Jim Svaty

Unit No: 76

**Interval: 3315.00 ft (KB) To 3450.00 ft (KB) (TVD)**

Reference Elevations: 2037.00 ft (KB)

Total Depth: 3450.00 ft (KB) (TVD)

2030.00 ft (CF)

Hole Diameter: 7.88 inches Hole Condition: Fair

KB to GR/CF: 7.00 ft

**Serial #: 8289 Outside**

Press@RunDepth: 440.34 psig @ 3316.00 ft (KB)

Capacity: 8000.00 psig

Start Date: 2014.12.18

End Date:

2014.12.18

Last Calib.:

2014.12.18

Start Time: 05:34:02

End Time:

13:19:45

Time On Btm:

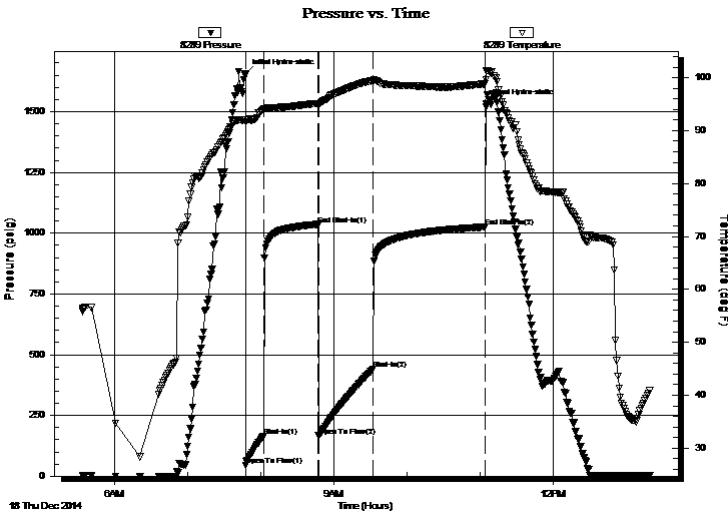
2014.12.18 @ 07:47:30

Time Off Btm:

2014.12.18 @ 11:05:00

**TEST COMMENT:** 15-IFP- BOB in 3 1/2min.  
45-ISIP- Surface Blow in 3min. Died in 15min.  
45-FFP- BOB in 3 1/2min.  
90-FSIP- No Blow

## PRESSURE SUMMARY



Time (Min.)	Pressure (psig)	Temp (deg F)	Annotation
0	1657.44	92.13	Initial Hydro-static
1	43.60	91.59	Open To Flow (1)
15	164.05	93.89	Shut-In(1)
60	1035.88	95.15	End Shut-In(1)
60	165.48	94.83	Open To Flow (2)
105	440.34	99.49	Shut-In(2)
197	1025.59	98.82	End Shut-In(2)
198	1531.28	99.59	Final Hydro-static

## Recovery

Length (ft)	Description	Volume (bbl)
567.00	MCW 5%w 95%w	7.68
330.00	WCM 45%w 55%m	4.63

\* Recovery from multiple tests

## Gas Rates

Choke (inches)	Pressure (psig)	Gas Rate (Mcf/d)



**TRILOBITE  
TESTING, INC**

# DRILL STEM TEST REPORT

**FLUID SUMMARY**

American Patriot Oil, LLC

**Sec. 16-8s-19w Rooks, KS**

10940 S Parker Rd  
Suite 765  
Parker, CO 80134  
ATTN: Roger Martin

**Lowry #2**

Job Ticket: 61382

**DST#: 2**

Test Start: 2014.12.18 @ 05:34:00

## Mud and Cushion Information

Mud Type: Gel Chem

Mud Weight: 9.00 lb/gal

Viscosity: 56.00 sec/qt

Water Loss: 7.60 in<sup>3</sup>

Resistivity: ohm.m

Salinity: 2700.00 ppm

Filter Cake: 2.00 inches

Cushion Type:

Cushion Length: ft

Cushion Volume: bbl

Gas Cushion Type:

Gas Cushion Pressure: psig

Oil API:

deg API

Water Salinity: 38500 ppm

## Recovery Information

Recovery Table

Length ft	Description	Volume bbl
567.00	MCW 5% <sub>m</sub> 95% <sub>w</sub>	7.680
330.00	WCM 45% <sub>w</sub> 55% <sub>m</sub>	4.629

Total Length: 897.00 ft      Total Volume: 12.309 bbl

Num Fluid Samples: 0

Num Gas Bombs: 0

Serial #:

Laboratory Name:

Laboratory Location:

Recovery Comments: .355 @ 37

