

JERRY A. SMITH

CERTIFIED PETROLEUM GEOLOGIST

GEOLOGIST'S REPORT
DRILLING TIME and SAMPLE LOG

COMPANY: PROLIFIC RESOURCES LLC
LEASE: #1 ROESLER

FIELD: WILD CAT
LOCATION: 1133' FSL & 530' FWL
SEC. 2 TWP. 22 R. 18W

COUNTY: PAWNEE STATE: KANSAS
CONTRACTOR: ROYAL DRILLING, RIG #1
SPUD: 6/3/2014 COMP: 6/12/2014
RTD: 4/288 LTD: 4/267

MUD UP: 3478 TYPE MUD: CHEMICAL
API No. 15-45-21766

SAMPLES SAVED FROM: 3700 TO: RTD
DRILLING TIME KEPT FROM: 3800 TO: RTD
SAMPLES EXAMINED FROM: 3700 TO: RTD
GEOLOGICAL SUPERVISION FROM: 3580 TO: RTD
GEOLOGIST ON WELL: JERRY A. SMITH

FORMATION TOPS LOG
ANHYDRITE 1104 (+944) 1104 (+944)
HEEBNER 3523 (-1475) 3526 (-1478)
BROWN LIME 3610 (-1562) 3613 (-1565)
LANING 3618 (-1570) 3622 (-1574)
B/KANSAS CITY 3905 (-1857) 3908 (-1860)
CHEROKEE SHALE 4036 (-1988) 4037 (-1989)
CONGLOMERATE 4058 (-2010) 4060 (-2012)
VIOLA 4141 (-2093) 4144 (-2096)
SIMPSON SHALE 4199 (-2151) 4205 (-2157)
ARBUCKLE 4240 (-2192) 4244 (-2195)

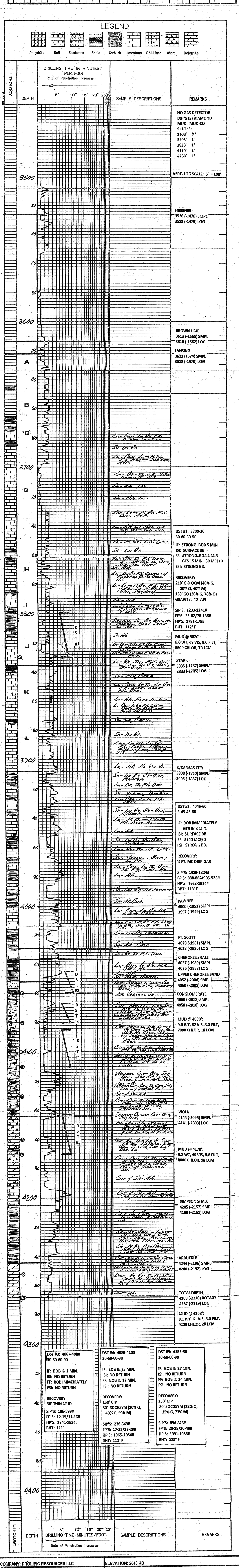
ELEVATIONS
K.B. 2048

CASING
SURFACE: 8 5/8" @ 1106'
PRODUCTION: 5 1/2" x 4267'
ELECTRICAL SURVEYS
MABOSS: DIL, FDC-DNL, MICRO, SONIC

MEASUREMENTS ARE ALL FROM:
KEB

D.F. G.L. 2043
Measurements Are All From:

LEGEND
Anhydrite Salt Sandstone Shale Carb sh Limestone Ool.Lime Chert Dolomite



COMPANY: PROLIFIC RESOURCES LLC	ELEVATION: 2048 KB
LEASE: #1 ROESLER	
LOCATION: 1133' FSL & 530' FWL	SEC 2 TWP 22 RGE 18 W
COUNTY: PAWNEE	STATE: KANSAS