



Mudgrove

Petroleum Geology
212 Main Street, Claflin KS

NOTES

Company: John Roy Evans Oil Co. LLC

Lease: Demel #4

Field: Kraft-Prusa

Location: SE-NW-NW-NE (400' FNL & 2200' FEL)

Sec: 6 Twsp: 17S Rge: 11W

County: Barton State: Kansas

KB: 1871' GL: 1878'

API #: 15-00926072-00-00

Contractor: Royal Drilling, Inc. (Rig #2)

Spud: 12/22/2014 Comp: 1/7/2015

RTD: 3395'

Mud Up: 2700' Type Mud: Chemical

Samples Saved From: 2800' to RTD

Drilling Time Kept From: 2800' to RTD

Samples Examined From: 2800' to RTD

Geological Supervision from: 2800' to RTD

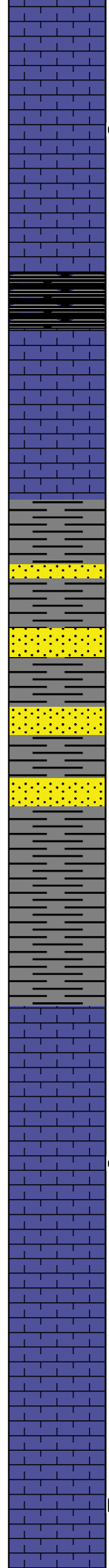
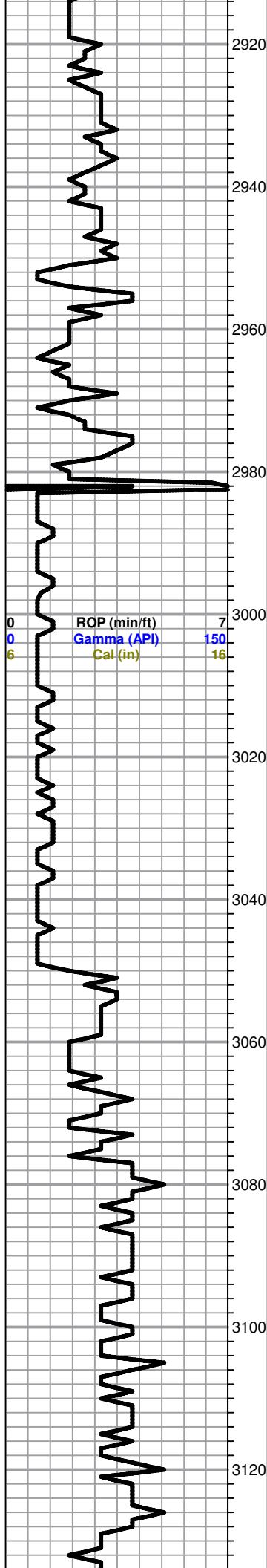
Geologist on Well: Wyatt Urban

Surface Casing: 8 5/8@ 746'

Electronic Surveys: None

John Roy Evans Oil Co.

DRILLING WELL					COMPARISON WELL				COMPARISON WELL			
John Roy Evans- Demel #4					John Roy Evans- Demel #3				John Roy Evans- #3 Zorn B			
SE-NW-NW-NE					NW-SE-NW-NE				SW-NE-NE-NW			
6-17S-11W					6-17S-11W				6-17S-11W			
1878 KB					1883 KB		Structural Relationship		1879 KB		Structural Relationship	
Formation	Sample	Sub-Sea	Log	Sub-Sea	Log	Sub-Sea	Sample	Log	Log	Sub-Sea	Sample	Log
Heebner	2951	-1073			2959	-1076	-3	1076	2945	-1066	-7	1066
Toronto	2963	-1085			2974	-1091	-6	1091	2961	-1082	-3	1082
Douglas	2977	-1099			2986	-1103	4	1103	2972	-1093	-6	1093
Brown Lime	3050	-1172			3058	-1175	3	1175	3043	-1164	-8	1164
Lansing	3064	-1186			3074	-1191	5	1191	3058	-1179	-7	1179
BKC	3306	-1428			3321	-1438	10	1438	3306	-1427	-1	1427
Conglomerate	3318	-1440			3329	-1446	6	1446				
Arbuckle	3342	-1464			3360	-1477	13	1477	3321	-1442	-22	1442
Quartzite	3518	-1640										
RTD	3395	-1517			3400	-1517	0	1517	3337	-1458	-59	1458
LTD									3332	-1453	1453	1453



LS, cream, tan, F- Med XLN, sdy in parts, poor scattered porosity, trc. black sppty stain, NSFO , no odor

Heebner 2951.0 (-1073.0)

Black carb Sh.

Toronto 2963.0 (-1085.0)

LS, tan, gry, FXL, few foss, poor scattered porosity, no shows, trc. brown stain

Douglas 2977.0 (-1099.0)

Sh, gry, maroon, greenish, soft, mica,

Sh, A/A

Sd. Gry F. Grain, well sorted, slightly mica, SFO, faint odor, Lt. brown/ black stain

Sd. Gry, F-Med grain, well sorted, friable, SFO, faint odor, Lt. brown stain

Sh, gry, maroon, greenish, soft in pts

Brown Lime 3050.0 (-1172.0)

LS, cream, tan, FXL, dense, cherty in parts, no shows

Lansing 3064.0 (-1186.0)

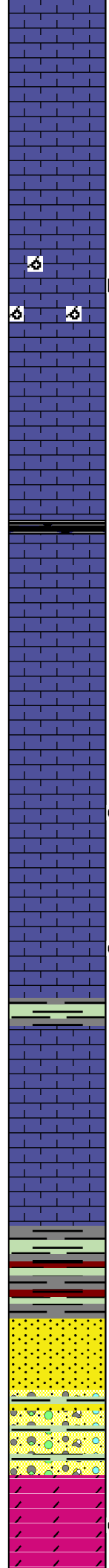
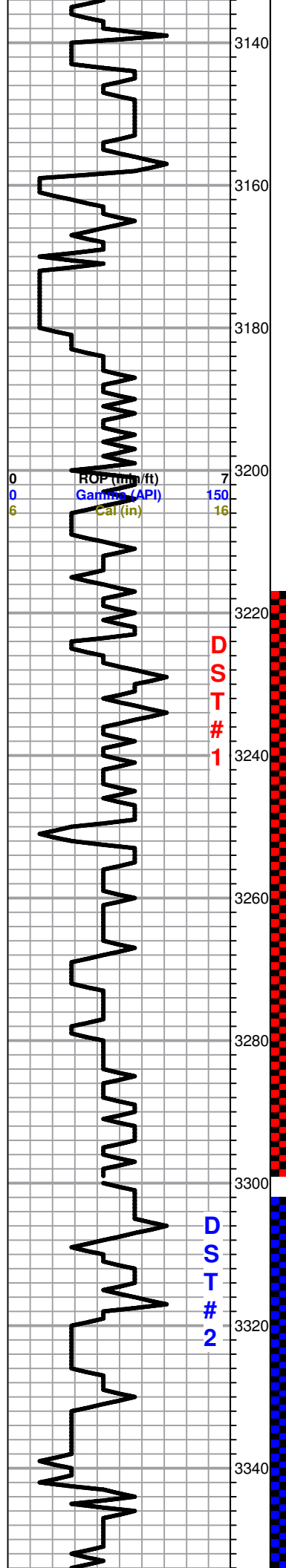
LS, cream, tan, FXL, few foss, poor scattered vuggy porosity, chalky in parts, Lt. SFO, faint odor when broken, trc. brown stain

LS, cream, tan, FXL, dense, poor visible porosity, no shows, no odor,

LS, tan, brown, FXL, few foss, poor visible porosity, cherty in parts, no shows, no odor

LS, cream, tan, FXL, few ool, poorly developed, poor scattered porosity, cherty in parts, NSFO, Lt. black stain, no odor

0	Total Gas (units)	100
0	C1 (units)	100
0	C2 (units)	100
0	C3 (units)	100
0	C4 (units)	100



LS, gry, tan, FXL, dense, poor visible porosity, few foss, cherty in parts, no shows, no odor

LS, gry, tan, FXL, few foss, poor scattered porosity, dense in pts, no shows, no odor

LS, tan, FXL, OOM, fair vuggy oom porosity, NSFO, no odor, trc. black stain on few

LS, cream, tan, FXL, few foss, poor scattered porosity, no shows, no odor

LS, tan, gry, FXL, dense, few ool, poorly developed, poor scattered porosity, no shows, no odor
Trc. Sh, black, gray

LS, cream, white, FXL, poor visible porosity, cherty, no shows, no odor

LS, tan, OOL, poor to fair scattered oom vuggy porosity, chalky, SFO, strong odor

LS, cream, tan, FXL, dense, poor visible porosity, chalky in parts, few scattered vuggy porosity, Lt. SFO, fair odor, Lt. black stain

Sh, gray, greenish, maroon,

LS, cream, tan, FXL, dense, poor visible porosity, cherty in parts, NSFO, odor???

LS, tan, gry, FXL, dense, poor visible porosity, no shows, no odor

BKC 3306.0 (-1428.0)

Sh, gry, greenish, maroon, black carb,

Sd. white, gry, V.F. grain, well sorted, no shows, trc. white chalk, soft no shows

Few cherts, tan, cream, ool, V.C. Sh.

Arbuckle 3342.0 (-1464.0)

Dol. white, F- Med rhombic xln, poor to fair INXLN porosity, SFO, faint- fair odor, Lt. black stain, trc. pyrite

0	Total Gas (units)	100
0	C1 (units)	100
0	C2 (units)	100
0	C3 (units)	100
0	C4 (units)	100

DST#1 3218-3299

30-30-30-30

Blow: Weak

Recovery:
8' Mud

Pressures:
ISIP 77 psi
FSIP 39 psi
IFP 13-15 psi
FFP 16-16 psi
HSH 1497-1495 psi

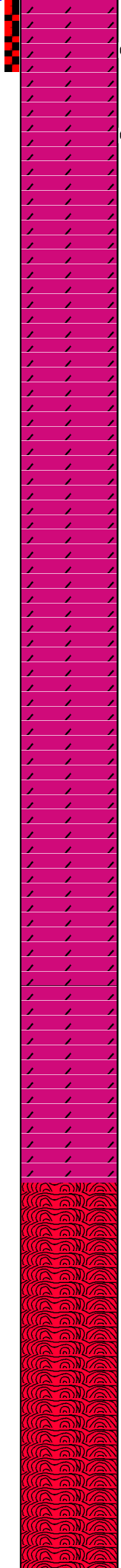
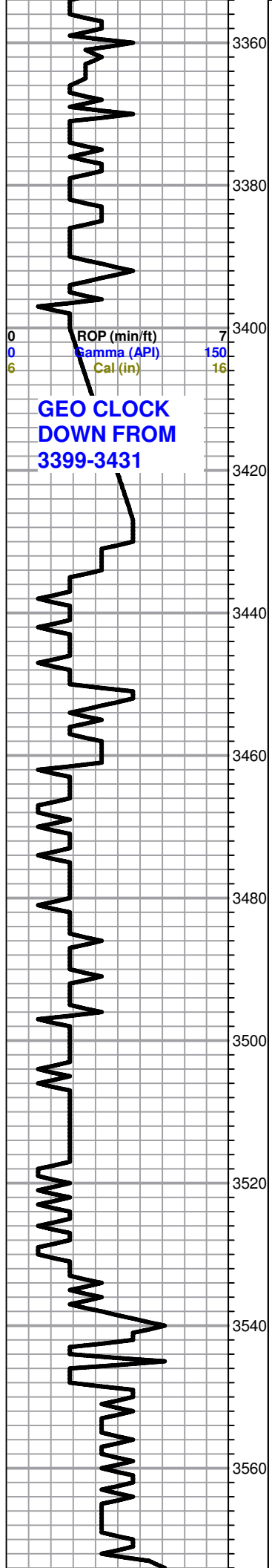
DST#2 3301-3355

30-30-30-30

Blow: Weak

Recovery:
20' OSM
(3%O, 97%M)

Pressures:
ISIP 569 psi
FSIP 472 psi
IFP 12-15 psi
FFP 16-18 psi
HSH 1541-1531 psi



Dol. white, Med rhombic xln, fair INXLN porosity, SFO, strong odor, brown, black stain

Dol. white, F-Med rhombic xln, poor to fair INXLN porosity, Trc. SFO, fair odor, brown stain

Dol. white, FXL, poor scattered porosity, poor INXLN porosity, no shows, no odor

Dol. white, FXL, dense, poor visible porosity, no shows, no odor

Dol. white, FXL, dense, poor visible porosity, dense, poor INXLN porosity, no shows, no odor

Dol. A/A

Dol. white, suc. friable, no shows, no odor

Dol. white, tan, FXL, dense, poor scattered porosity, no shows, no odor

Dol. white, tan, FXL, dense, poor visible porosity, no shows, no odor

Dol. white, FXL, few suc. poor visible porosity, no shows, no odor

Quartzite 3518.0 (-1647.0)

Qtz, clear, heavily fractured, biotite, K feldsar,

Qtz clear, heavily fractured, trc. biotite, k- feldspar

Qtz, clear, heavily fractured, biotite, k-feldspar, micas

DST#3 3301-3365

30-45-30-45

Blow: Fair

Recovery:
 98' Mud
 (100% Mud)

Pressures:

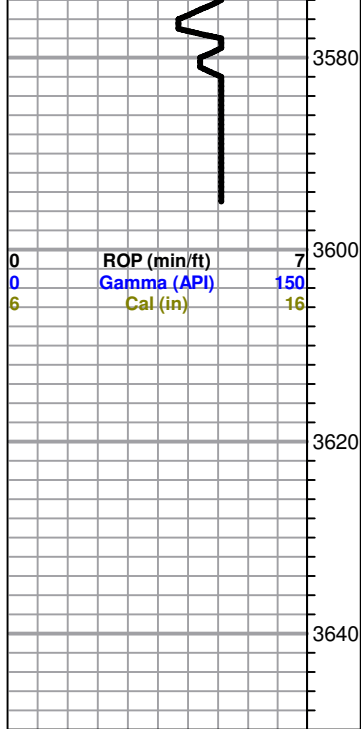
ISIP 662 psi

FSIP 529 psi

IFP 17-39 psi

FFP 42-57 psi

HSH 1537-1533 psi



Qtz. A/A, trc. Mica, trc. K. feldspar, no shows, no odor, dense, poor to no visible porosity

RTD 3595.0 (-1717.0)

0	Total Gas (units)	100
0	C1 (units)	100
0	C2 (units)	100
0	C3 (units)	100
0	C4 (units)	100