



**CONSOLIDATED**  
Oil Well Services, LLC

REMIT TO  
Consolidated Oil Well Services, LLC  
Dept:970  
P.O.Box 4346  
Houston, TX 77210-4346

MAIN OFFICE

P.O.Box 884  
Chanute, KS 66720  
620/431-9210, 1-800/467-8676  
Fax 620/431-0012

Invoice

Invoice#

802947

Invoice Date: 01/09/15

Terms: C.O.D.

Page 1

LARIO OIL & GAS

P.O. BOX 1093  
GARDEN CITY KS 637846  
USA  
3162655611

SS COUNTRY STORE #2-4

*Drilling life 15-008*  
*1-13-15* *AK*

Part No	Description	Quantity	Unit Price	Discount(%)	Total
5401S	Cement Pump Truck - <u>Surface</u>	1.000	1,150.0000	20.000	920.00
5406	Mileage Charge	40.000	5.2500	20.000	168.00
5407A	Ton Mileage Delivery Charge	1.000	789.6000	20.000	631.68
1104S	Class A Cement	240.000	18.5500	20.000	3,561.60
1102	Calcium Chloride (50#)	677.000	0.9400	20.000	509.10
1118B	Premium Gel / Bentonite	451.000	0.2700	20.000	97.42
4432	<u>8 5/8</u> Wooden Plug	1.000	100.7500	20.000	80.60

Subtotal 7,460.50

Discounted Amount 1,492.10

SubTotal After Discount 5,968.40

Amount Due 7,893.34 If paid after 01/09/15

Tax: 346.27

Total: 6,314.67

*AK*  
*AK*  
4 2015

1:30 P

1732

5:00 P



**CONSOLIDATED**  
Oil Well Services, LLC

PO Box 884, Chanute, KS 66720  
620-431-9210 or 800-467-8676

1680  
**Invoice # 802947**  
**FIELD TICKET & TREATMENT REPORT**  
**CEMENT**

TICKET NUMBER 47853  
LOCATION Dickley ks  
FOREMAN Cory Davis  
Miles S.

KS

DATE	CUSTOMER #	WELL NAME & NUMBER	SECTION	TOWNSHIP	RANGE	COUNTY
1-8-15	4793	SS Country store # 2-4	4	18S	35W	Wichita
CUSTOMER Lario Oil + Gas			Mariantha AD22 2 N W S.			
MAILING ADDRESS			TRUCK #	DRIVER	TRUCK #	DRIVER
CITY			731	Jeremy R.		
STATE			693	Colin S.		
ZIP CODE			Hulpur	Keith C.		

JOB TYPE Surface HOLE SIZE 12 1/4 HOLE DEPTH 374 CASING SIZE & WEIGHT 8 5/8 23#  
 CASING DEPTH 374 DRILL PIPE \_\_\_\_\_ TUBING \_\_\_\_\_ OTHER \_\_\_\_\_  
 SLURRY WEIGHT 15.2 SLURRY VOL 1.24 WATER gal/sk \_\_\_\_\_ CEMENT LEFT in CASING 20 sks.  
 DISPLACEMENT 22.65 DISPLACEMENT PSI \_\_\_\_\_ MIX PSI \_\_\_\_\_ RATE \_\_\_\_\_

REMARKS: safety meeting - Rig upon Duke #4 - Run casing - Break circulation with Rig pump  
Hook up to pump truck - mix 240 sks class cement 3% cc 2% gel stop Release Plug Displace  
22.65 BBL water - wash up pump and lines Rig down

Cement Did Circulate

Aprox to P. + 10 BBL

Thanks Cory D. + Crew

ACCOUNT CODE	QUANTITY or UNITS	DESCRIPTION of SERVICES or PRODUCT	UNIT PRICE	TOTAL
5401 S	1	PUMP CHARGE	1,150.00	1,150.00
5406	40	MILEAGE	5.25	210.00
5407 A	11.28	Ten mileage Delivery	1.75	789.60
1104	240 sks	Class A cement	18.55	4,452.00
1102	677#	Calcium chloride	.94	636.38
1118 B	451#	Bentonite (gel)	.27	121.77
4432	1	8 5/8 Plug	100.75	100.75
			Sub total	7,460.50
			20% tax	1,492.10
			Sub total	5,968.40
			SALES TAX	346.27
			ESTIMATED TOTAL	6314.67

Ravin 3737

AUTHORIZATION Rich Wheeler TITLE T.P DATE \_\_\_\_\_

I acknowledge that the payment terms, unless specifically amended in writing on the front of the form or in the customer's account records, at our office, and conditions of service on the back of this form are in effect for services identified on this form.

## TERMS

In consideration of the prices to be charged for Consolidated Oil Well Services, LLC (COWS) services, equipment and products and for the performance of services and supplying of materials, Customer agrees to the following terms and conditions.

Terms. Cash in advance unless satisfactory credit is established. On credit sales, invoices are payable within 30 days of the invoice date. On all invoices not paid within 30 days, Customer agrees to pay COWS interest at the rate of 18% per annum or the maximum rate allowed by law, whichever is higher. In the event COWS retains an attorney to pursue collection of any account, Customer agrees to pay all collection costs and attorney's fees incurred by COWS.

Any applicable federal, state or local sales, use occupation, consumer's or emergency taxes shall be added to the quoted price. All process license fees required to be paid to others will be added to the scheduled prices.

All COWS' prices are subject to change without notice.

## SERVICE CONDITIONS

Customer warrants that the well is in proper condition to receive the services, equipment, products and materials to be supplied by COWS. The Customer shall at all time have complete care, custody, and control of the well, the drilling and production equipment at the well, and the premises about the well. A responsible representative of the Customer shall be present to specify depths, pressures, or materials used for any service which is to be performed.

(a) COWS shall not be responsible for any claim, cause of action or demand (hereinafter referred to as a "claim") for damage to property, or injury to or death of employees and representatives, of Customer or the well owner (if different from Customer), unless such damage, injury or death is caused by the willful misconduct or gross negligence of COWS, including but not limited to sub-surface damage and surface damage arising from sub-surface damage.

(b) Unless a claim is the result of the sole willful misconduct or gross negligence of COWS, Customer shall be responsible for and indemnify and hold COWS harmless from any claim for: (1) reservoir loss or damage, or property damage resulting from sub-surface pressure, losing control of the well and/or a well blowout; (2) damages as a result of a subsurface trespass, or an action in the nature thereof, arising from a service operation performed by COWS; (3) injury to or death of persons, other than employees of COWS, or damage to property (including, but not limited to, injury to the well), or any damages whatsoever, irrespective of cause, growing out of or in any way connected with the use of radioactive material in the well hole; and (4) well damage or reservoir damage caused by (i) loss of circulation, cement invasion, cement misplacement, pumping cement or cement plugs on wells with loss of circulation, including the failure to displace plug to proper depth, (ii) sub-surface pressure and resulting failure to complete pumping of cement or cement plug, including dehydration of cement slurry or flashing, plugged float shoe, annulus bridging or plugging, or (iii) down hole tools being lost or left in the well, or becoming stuck in the well for any reason and by any cause. COWS may furnish down hole tools and may supply supervision for the running and placement of such tools but will not be liable for any damage, loss or result caused by the use of such tools.

Furthermore, Customer will be responsible for the cost to replace such tools if they are lost or left in the well.

(c) COWS makes no guarantee of the effectiveness of any COWS' products, supplies or materials, or the results of any COWS' treatment or services.

(d) Because of the uncertainty of variable well conditions and the necessity of relying on facts and supporting services furnished by others, COWS is unable to guarantee the accuracy of any chart interpretation, research analysis, job recommendation or other data furnished by COWS. COWS' personnel will use their best efforts in gathering such information and their best judgement in interpreting it, but Customer agrees that COWS shall not be responsible for any damage arising from the use of such information except where due to COWS' gross negligence or willful misconduct in the preparation or furnishing of it.

(e) COWS may buy and re-sell to Customer down hole equipment, including but not limited to float equipment, DV tools, port collars, type A & B packers, and Customer agrees that COWS is not an agent or dealer for the companies who manufacture such items, and further agrees that Customer shall be solely responsible for and indemnify COWS against any claim with regard to the effectiveness, malfunction of, or functionality of such items.

## WARRANTIES - LIMITATION OF LIABILITY

COWS warrants title to the products, supplies and materials, and that the same are free from defects in workmanship and materials. THERE ARE NO OTHER WARRANTIES, EXPRESS OR IMPLIED, NOR ANY WARRANTY OF MERCHANTABILITY OR FITNESS FOR PURPOSE, WHICH EXTEND BEYOND THOSE STATED IN THE IMMEDIATELY PRECEDING SENTENCE. COWS's liability and Customer's exclusive remedy in any claim (whether in contract, tort, breach of warranty or otherwise,) arising out of the sale or use of any COWS' products, supplies, materials or services is expressly limited to the replacement of such products, supplies, materials or services or their return to COWS or, at COWS' option, an allowance to Customer of credit for the cost of such items.

Customer waives and releases all claims against COWS for any special, incidental, indirect, consequential or punitive damages



**CONSOLIDATED**  
Oil Well Services, LLC

REMIT TO  
Consolidated Oil Well Services, LLC  
Dept:970  
P.O.Box 4346  
Houston, TX 77210-4346

MAIN OFFICE

P.O.Box 884  
Chanute, KS 66720  
620/431-9210, 1-800/467-8676  
Fax 620/431-0012

Invoice

Invoice# 803060

Invoice Date: 01/20/15

Terms: C.O.D.

Page 1

LARIO OIL & GAS

P.O. BOX 1093  
GARDEN CITY KS 637846  
USA  
3162655611

**SS COUNTRY STORE #2-4**

*Drilling after 15-008  
1-23-15 AK*

Tax: 1,369.87  
Total: 22,560.50

*Handwritten signatures and stamps*



**CONSOLIDATED**  
Oil Well Services, LLC

PO Box 884, Chanute, KS 66720  
620-431-9210 or 800-467-8676

1845  
1783  
AFE 15-008

TICKET NUMBER 47905  
LOCATION Oakley, Ks.  
FOREMAN Cory Davis

**FIELD TICKET & TREATMENT REPORT**  
**CEMENT**

INVOICE # 803060

DATE	CUSTOMER #	WELL NAME & NUMBER	SECTION	TOWNSHIP	RANGE	COUNTY			
1/19/15	4793	SS Country Store #2-4	4	18 S	35 W	Wichita			
CUSTOMER		Merritt							
MAILING ADDRESS		15th RD 22							
CITY		STATE							
STATE		ZIP CODE							
CITY		TRUCK #		DRIVER		TRUCK #		DRIVER	
		722		Jeremy R.					
		460		Larry H.					
		529		Robert					

JOB TYPE 2 stage HOLE SIZE 7 7/8 HOLE DEPTH 5100 CASING SIZE & WEIGHT 5 1/2 14#  
 CASING DEPTH 5093.34 DRILL PIPE \_\_\_\_\_ TUBING \_\_\_\_\_ OTHER \_\_\_\_\_  
 SLURRY WEIGHT 14.2/12.5 SLURRY VOL 1.56/1.76 WATER gal/sk 6.47/10 CEMENT LEFT IN CASING 21'  
 DISPLACEMENT 123.78/ DISPLACEMENT PSI 900/900 MIX PSI 50/50 RATE 50BBL/min / 5BBL/min

REMARKS: Safety meeting - Rig up on Duke 4 - run casing with cent. on joint 122, 119, 116, 113, 110, 107, 104, 101, 98, 95, 42, 39, 36, 33, 61 and 58 Bskt on joint 60 DV tool at 2440 shoe 21.15  
Final running casing - Circulate 1:30 - Pump 5BBL water ahead mix mud flush pump 5BBL water behind mix 190 sks OWC 5# Kel-seal shut down wash up pump + lines Release Plug Displace 123.5 BBL - 60 BBL water 63.5 mud - Final Lift 900 psi landed plug at 1600 psi - open tool circ. 330: Plug Rt hole with 30sks mix 420 sks of 60/40 poz mix 8% gel 1/4# flo-seal shut down Release Plug Displace 50 BBL of water Final lift 500 psi land at 1600 psi wash up pump + lines Rig down.

ACCOUNT CODE	QUANTITY or UNITS	DESCRIPTION of SERVICES or PRODUCT	UNIT PRICE	TOTAL
5401 C	1	PUMP CHARGE	3,175.00	3,175.00
5406	40	MILEAGE	5.25	210.00
5407 A	29.9	Tenmileage Delivery	1.75	2,093.00
1126	190 sks	OWC	23.70	4,503.00
1110 A	950 #	Kel-seal	.56	532.00
1131	450	60/40 Poz mix	15.86	7,137.00
1118 A	3,096	Bentonite (gel)	.27	835.92
1107	113	Floiseal	2.97	335.61
4159	1	5 1/2 AFL Float shoe	433.75	433.75
4454	1	5 1/2 Latchdown plug Assembly	567.00	567.00
4177 A	1	5 1/2 DV Tool	4,900.00	4,900.00
4130	16	5 1/2 centralizers	61.00	976.00
4104	1	5 1/2 Basket	290.00	290.00
1144 G	500 gal	Mud flush	1.00	500.00
		sub total		26,488.28
		20% loss		5,297.66
		sub total		21,190.62
		SALES TAX		1,369.87
		ESTIMATED TOTAL		22,560.50

AUTHORIZATION [Signature] TITLE Superintendent DATE 1-19-15

I acknowledge that the payment terms, unless specifically amended in writing on the front of the form or in the customer's account records, at our office, and conditions of service on the back of this form are in effect for services identified on this form

## TERMS

In consideration of the prices to be charged for Consolidated Oil Well Services, LLC (COWS) services, equipment and products and for the performance of services and supplying of materials, Customer agrees to the following terms and conditions.

Terms. Cash in advance unless satisfactory credit is established. On credit sales, invoices are payable within 30 days of the invoice date. On all invoices not paid within 30 days, Customer agrees to pay COWS interest at the rate of 18% per annum or the maximum rate allowed by law, whichever is higher. In the event COWS retains an attorney to pursue collection of any account, Customer agrees to pay all collection costs and attorney's fees incurred by COWS.

Any applicable federal, state or local sales, use occupation, consumer's or emergency taxes shall be added to the quoted price. All process license fees required to be paid to others will be added to the scheduled prices.

All COWS' prices are subject to change without notice.

## SERVICE CONDITIONS

Customer warrants that the well is in proper condition to receive the services, equipment, products and materials to be supplied by COWS. The Customer shall at all time have complete care, custody, and control of the well, the drilling and production equipment at the well, and the premises about the well. A responsible representative of the Customer shall be present to specify depths, pressures, or materials used for any service which is to be performed.

(a) COWS shall not be responsible for any claim, cause of action or demand (hereinafter referred to as a 'claim') for damage to property, or injury to or death of employees and representatives, of Customer or the well owner (if different from Customer), unless such damage, injury or death is caused by the willful misconduct or gross negligence of COWS, including but not limited to sub-surface damage and surface damage arising from sub-surface damage.

(b) Unless a claim is the result of the sole willful misconduct or gross negligence of COWS, Customer shall be responsible for and indemnify and hold COWS harmless from any claim for: (1) reservoir loss or damage, or property damage resulting from sub-surface pressure, losing control of the well and/or a well blowout; (2) damages as a result of a subsurface trespass, or an action in the nature thereof, arising from a service operation performed by COWS; (3) injury to or death of persons, other than employees of COWS, or damage to property (including, but not limited to, injury to the well), or any damages whatsoever, irrespective of cause, growing out of or in any way connected with the use of radioactive material in the well hole; and (4) well damage or reservoir damage caused by (i) loss of circulation, cement invasion, cement misplacement, pumping cement or cement plugs on wells with loss of circulation, including the failure to displace plug to proper depth, (ii) sub-surface pressure and resulting failure to complete pumping of cement or cement plug, including dehydration of cement slurry or flashing, plugged float shoe, annulus bridging or plugging, or (iii) down hole tools being lost or left in the well, or becoming stuck in the well for any reason and by any cause. COWS may furnish down hole tools and may supply supervision for the running and placement of such tools but will not be liable for any damage, loss or result caused by the use of such tools.

Furthermore, Customer will be responsible for the cost to replace such tools if they are lost or left in the well.

(c) COWS makes no guarantee of the effectiveness of any COWS' products, supplies or materials, or the results of any COWS' treatment or services.

(d) Because of the uncertainty of variable well conditions and the necessity of relying on facts and supporting services furnished by others, COWS is unable to guarantee the accuracy of any chart interpretation, research analysis, job recommendation or other data furnished by COWS. COWS' personnel will use their best efforts in gathering such information and their best judgement in interpreting it, but Customer agrees that COWS shall not be responsible for any damage arising from the use of such information except where due to COWS' gross negligence or willful misconduct in the preparation or furnishing of it.

(e) COWS may buy and re-sell to Customer down hole equipment, including but not limited to float equipment, DV tools, port collars, type A & B packers, and Customer agrees that COWS is not an agent or dealer for the companies who manufacture such items, and further agrees that Customer shall be solely responsible for and indemnify COWS against any claim with regard to the effectiveness, malfunction of, or functionality of such items.

## WARRANTIES - LIMITATION OF LIABILITY

COWS warrants title to the products, supplies and materials, and that the same are free from defects in workmanship and materials. THERE ARE NO OTHER WARRANTIES, EXPRESS OR IMPLIED, NOR ANY WARRANTY OF MERCHANTABILITY OR FITNESS FOR PURPOSE, WHICH EXTEND BEYOND THOSE STATED IN THE IMMEDIATELY PRECEDING SENTENCE. COWS's liability and Customer's exclusive remedy in any claim (whether in contract, tort, breach of warranty or otherwise,) arising out of the sale or use of any COWS' products, supplies, materials or services is expressly limited to the replacement of such products, supplies, materials or services or their return to COWS or, at COWS' option, an allowance to Customer of credit for the cost of such items.

Customer waives and releases all claims against COWS for any special, incidental, indirect, consequential or punitive damages.



**CONSOLIDATED**  
Oil Well Services, LLC

REMIT TO  
Consolidated Oil Well Services, LLC  
Dept:970  
P.O.Box 4346  
Houston, TX 77210-4346

MAIN OFFICE

P.O.Box 884  
Chanute, KS 66720  
620/431-9210, 1-800/467-8676  
Fax 620/431-0012

Invoice Invoice# 803466

Invoice Date: 02/23/15 Terms: C.O.D. Page 1

LARIO OIL & GAS  
P.O. BOX 1093  
GARDEN CITY KS 637846  
USA  
3162655611

SS COUNTRY STORE 2-4  
completion after 15-008  
2-27-15 *AX*

Part No	Description	Quantity	Unit Price	Discount(%)	Total
5401B	Squeeze Pump (Kick Off Plug Pump)	1.000	1,785.0000	20.000	1,428.00
5406	Mileage Charge	45.000	5.2500	20.000	189.00
5407	Min. Bulk Delivery Charge	1.000	430.0000	20.000	344.00
1104S	Class A Cement	50.000	18.5500	20.000	742.00
5613	Squeeze Manifold	1.000	200.0000	20.000	160.00
Subtotal					3,578.75
Discounted Amount					715.75
SubTotal After Discount					2,863.00

Amount Due 3,654.34 If paid after 02/23/15

Tax: 60.47  
Total: 2,923.47

*ye*  
MAR - 2 2015  
*ye*

8130A

2211

PO 3312

2 P



CONSOLIDATED  
Oil Well Services, LLC

2153

Invoice # 808466

TICKET NUMBER 47806

LOCATION Oakley Ks

FOREMAN Jerry Y

Miles 5

PO Box 884, Chanute, KS 66720  
620-431-9210 or 800-467-8676

FIELD TICKET & TREATMENT REPORT  
CEMENT

Ks

DATE	CUSTOMER #	WELL NAME & NUMBER	SECTION	TOWNSHIP	RANGE	COUNTY
2-20-15	4793	SS Country Store 2-4	4	18	35W	Wichita
CUSTOMER			TRUCK #			
MAILING ADDRESS			DRIVER			
CITY			TRUCK #			
STATE			DRIVER			
ZIP CODE			TRUCK #			
			DRIVER			

JOB TYPE Squeeze HOLE SIZE \_\_\_\_\_ HOLE DEPTH \_\_\_\_\_ CASING SIZE & WEIGHT 5 1/2  
 CASING DEPTH \_\_\_\_\_ DRILL PIPE \_\_\_\_\_ TUBING 2 7/8 OTHER parts @ 4146-52  
 SLURRY WEIGHT 15.0 SLURRY VOL 1.28 WATER gal/sk \_\_\_\_\_ CEMENT LEFT in CASING 178'  
 DISPLACEMENT 2 2/4 to packer DISPLACEMENT PSI \_\_\_\_\_ MIX PSI \_\_\_\_\_ RATE \_\_\_\_\_

REMARKS: Safety meeting on rig up on Plains test plug to 1500# & spot sand ball up to 3929 set packer take inj rate 1 3/4 bbl/pm @ 1000# spot 50 sks, clean pump & liner displacer & stage on for 23 bbl @ 1500# set on 10 min released back & buoyed up released packer & reversed clean with 40 bbl fresh water

Thank you  
Jerry & crew

ACCOUNT CODE	QUANTITY or UNITS	DESCRIPTION of SERVICES or PRODUCT	UNIT PRICE	TOTAL
5401 b	1	PUMP CHARGE	1785.00	1785.00
5406	45	MILEAGE	5.25	236.25
5407	2.35	for mileage delivery (mi)	430.00	430.00
1104 s	50 sks	100m class A cement	18.53	927.50
5613	1	squeeze manifold	200.00	200.00
			Subtotal	3578.75
			-20%	715.75
			Subtotal	2863.00
			SALES TAX	60.47
			ESTIMATED TOTAL	2923.47

Revin 3737 AFE 15-008 AUTHORIZATION Ruben Paddock TITLE Assistant Foreman DATE 2/20/15

I acknowledge that the payment terms, unless specifically amended in writing on the front of the form or in the customer's account records, at our office, and conditions of service on the back of this form are in effect for services identified on this form.



## TERMS

In consideration of the prices to be charged for Consolidated Oil Well Services, LLC (COWS) services, equipment and products and for the performance of services and supplying of materials, Customer agrees to the following terms and conditions.

**Terms.** Cash in advance unless satisfactory credit is established. On credit sales, invoices are payable within 30 days of the invoice date. On all invoices not paid within 30 days, Customer agrees to pay COWS interest at the rate of 18% per annum or the maximum rate allowed by law, whichever is higher. In the event COWS retains an attorney to pursue collection of any account, Customer agrees to pay all collection costs and attorney's fees incurred by COWS.

Any applicable federal, state or local sales, use occupation, consumer's or emergency taxes shall be added to the quoted price. All process license fees required to be paid to others will be added to the scheduled prices.

All COWS' prices are subject to change without notice.

## SERVICE CONDITIONS

Customer warrants that the well is in proper condition to receive the services, equipment, products and materials to be supplied by COWS. The Customer shall at all time have complete care, custody, and control of the well, the drilling and production equipment at the well, and the premises about the well. A responsible representative of the Customer shall be present to specify depths, pressures, or materials used for any service which is to be performed.

(a) COWS shall not be responsible for any claim, cause of action or demand (hereinafter referred to as a 'claim') for damage to property, or injury to or death of employees and representatives, of Customer or the well owner (if different from Customer), unless such damage, injury or death is caused by the willful misconduct or gross negligence of COWS, including but not limited to sub-surface damage and surface damage arising from sub-surface damage.

(b) Unless a claim is the result of the sole willful misconduct or gross negligence of COWS, Customer shall be responsible for and indemnify and hold COWS harmless from any claim for: (1) reservoir loss or damage, or property damage resulting from sub-surface pressure, losing control of the well and/or a well blowout; (2) damages as a result of a subsurface trespass, or an action in the nature thereof, arising from a service operation performed by COWS; (3) injury to or death of persons, other than employees of COWS, or damage to property (including, but not limited to, injury to the well), or any damages whatsoever, irrespective of cause, growing out of or in any way connected with the use of radioactive material in the well hole; and (4) well damage or reservoir damage caused by (i) loss of circulation, cement invasion, cement misplacement, pumping cement or cement plugs on wells with loss of circulation, including the failure to displace plug to proper depth, (ii) sub-surface pressure and resulting failure to complete pumping of cement or cement plug, including dehydration of cement slurry or flashing, plugged float shoe, annulus bridging or plugging, or (iii) down hole tools being lost or left in the well, or becoming stuck in the well for any reason and by any cause. COWS may furnish down hole tools and may supply supervision for the running and placement of such tools but will not be liable for any damage, loss or result caused by the use of such tools.

Furthermore, Customer will be responsible for the cost to replace such tools if they are lost or left in the well.

(c) COWS makes no guarantee of the effectiveness of any COWS' products, supplies or materials, or the results of any COWS' treatment or services.

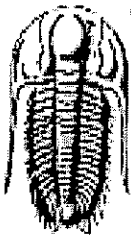
(d) Because of the uncertainty of variable well conditions and the necessity of relying on facts and supporting services furnished by others, COWS is unable to guarantee the accuracy of any chart interpretation, research analysis, job recommendation or other data furnished by COWS. COWS' personnel will use their best efforts in gathering such information and their best judgement in interpreting it, but Customer agrees that COWS shall not be responsible for any damage arising from the use of such information except where due to COWS' gross negligence or willful misconduct in the preparation or furnishing of it.

(e) COWS may buy and re-sell to Customer down hole equipment, including but not limited to float equipment, DV tools, port collars, type A & B packers, and Customer agrees that COWS is not an agent or dealer for the companies who manufacture such items, and further agrees that Customer shall be solely responsible for and indemnify COWS against any claim with regard to the effectiveness, malfunction of, or functionality of such items.

## WARRANTIES - LIMITATION OF LIABILITY

COWS warrants title to the products, supplies and materials, and that the same are free from defects in workmanship and materials. THERE ARE NO OTHER WARRANTIES, EXPRESS OR IMPLIED, NOR ANY WARRANTY OF MERCHANTABILITY OR FITNESS FOR PURPOSE WHICH EXTEND BEYOND THOSE STATED IN THE IMMEDIATELY PRECEDING SENTENCE. COWS's liability and Customer's exclusive remedy in any claim (whether in contract, tort, breach of warranty or otherwise,) arising out of the sale or use of any COWS' products, supplies, materials or services is expressly limited to the replacement of such products, supplies, materials or services or their return to COWS or, at COWS' option, an allowance to Customer of credit for the cost of such items.

Customer waives and releases all claims against COWS for any special, incidental, indirect, consequential or punitive damages.



**TRILOBITE  
TESTING, INC.**

# DRILL STEM TEST REPORT

Lario Oil & Gas Inc

4-18s-35w Wichita, Ks

301 S Market  
Wichita, Ks 67202

SS Country Store 2-4

Job Ticket: 61459

DST#: 1

ATTN: Steve Davis

Test Start: 2015.01.13 @ 06:25:52

## GENERAL INFORMATION:

Formation: **B**  
 Deviated: No Whipstock: 0.00 ft (KB)  
 Time Tool Opened: 09:22:07  
 Time Test Ended: 15:15:52

Test Type: Conventional Bottom Hole (Initial)  
 Tester: Shane McBride  
 Unit No: 55

Interval: 4075.00 ft (KB) To 4105.00 ft (KB) (TVD)  
 Total Depth: 4105.00 ft (KB) (TVD)  
 Hole Diameter: 7.88 inches Hole Condition: Fair

Reference Elevations: 3203.00 ft (KB)  
 3194.00 ft (CF)  
 KB to GR/CF: 9.00 ft

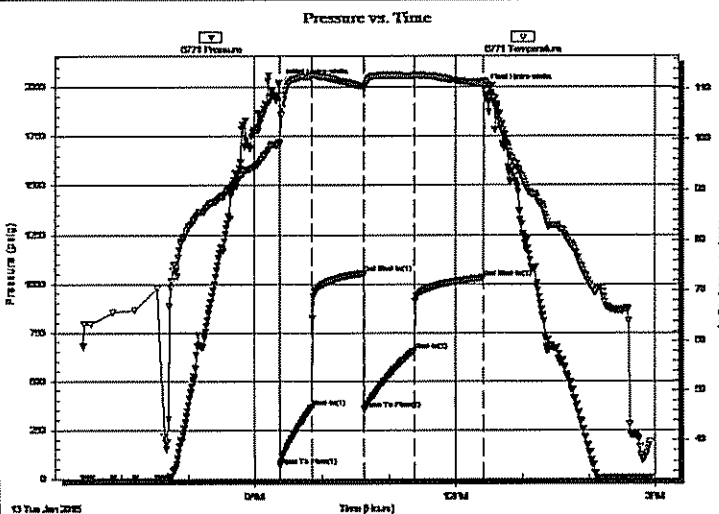
Serial #: 6771

Outside

Press@RunDepth: 657.86 psig @ 4076.00 ft (KB)  
 Start Date: 2015.01.13 End Date: 2015.01.13  
 Start Time: 06:25:52 End Time: 14:55:52

Capacity: 8000.00 psig  
 Last Calib.: 2015.01.13  
 Time On Btm: 2015.01.13 @ 09:21:52  
 Time Off Btm: 2015.01.13 @ 12:25:22

TEST COMMENT: B.O.B. in 5 1/2 min.  
 No return  
 B.O.B. in 7 1/2 min.  
 No return



## PRESSURE SUMMARY

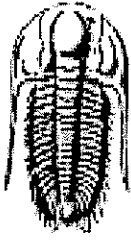
Time (Min.)	Pressure (psig)	Temp (deg F)	Annotation
0	2021.90	99.50	Initial Hydro-static
1	67.77	99.09	Open To Flow (1)
30	366.59	112.50	Shut-In(1)
76	1053.42	110.51	End Shut-In(1)
76	353.65	110.35	Open To Flow (2)
121	657.86	112.59	Shut-In(2)
183	1030.30	111.15	End Shut-In(2)
184	1992.51	111.64	Final Hydro-static

## Recovery

Length (ft)	Description	Volume (bbl)
90.00	m c w 30m 70w 2" in free oil on top	1.26
180.00	s m c w 10m 90w w/oil spots	2.52
1080.00	water 100w w/oil spots	15.15

## Gas Rates

	Choke (inches)	Pressure (psig)	Gas Rate (Mcf/d)



**TRILOBITE  
TESTING, INC.**

# DRILL STEM TEST REPORT

**FLUID SUMMARY**

Lario Oil & Gas Inc

4-18s-35w Wichita, Ks

301 S Market  
Wichita, Ks 67202

SS Country Store 2-4

Job Ticket: 61459

DST#: 1

ATTN: Steve Davis

Test Start: 2015.01.13 @ 06:25:52

## Mud and Cushion Information

Mud Type: Gel Chem

Cushion Type:

Oil API:

0 deg API

Mud Weight: 9.00 lb/gal

Cushion Length:

ft

Water Salinity:

28500 ppm

Viscosity: 56.00 sec/qt

Cushion Volume:

bbbl

Water Loss: 7.20 in<sup>3</sup>

Gas Cushion Type:

Resistivity: 0.00 ohm.m

Gas Cushion Pressure:

psig

Salinity: 5000.00 ppm

Filter Cake: 1.00 inches

## Recovery Information

Recovery Table

Length ft	Description	Volume bbl
90.00	m c w 30m 70w 2" in free oil on top	1.262
180.00	s m c w 10m 90w w/oil spots	2.525
1080.00	w ater 100w w/oil spots	15.150

Total Length: 1350.00 ft      Total Volume: 18.937 bbl

Num Fluid Samples: 0

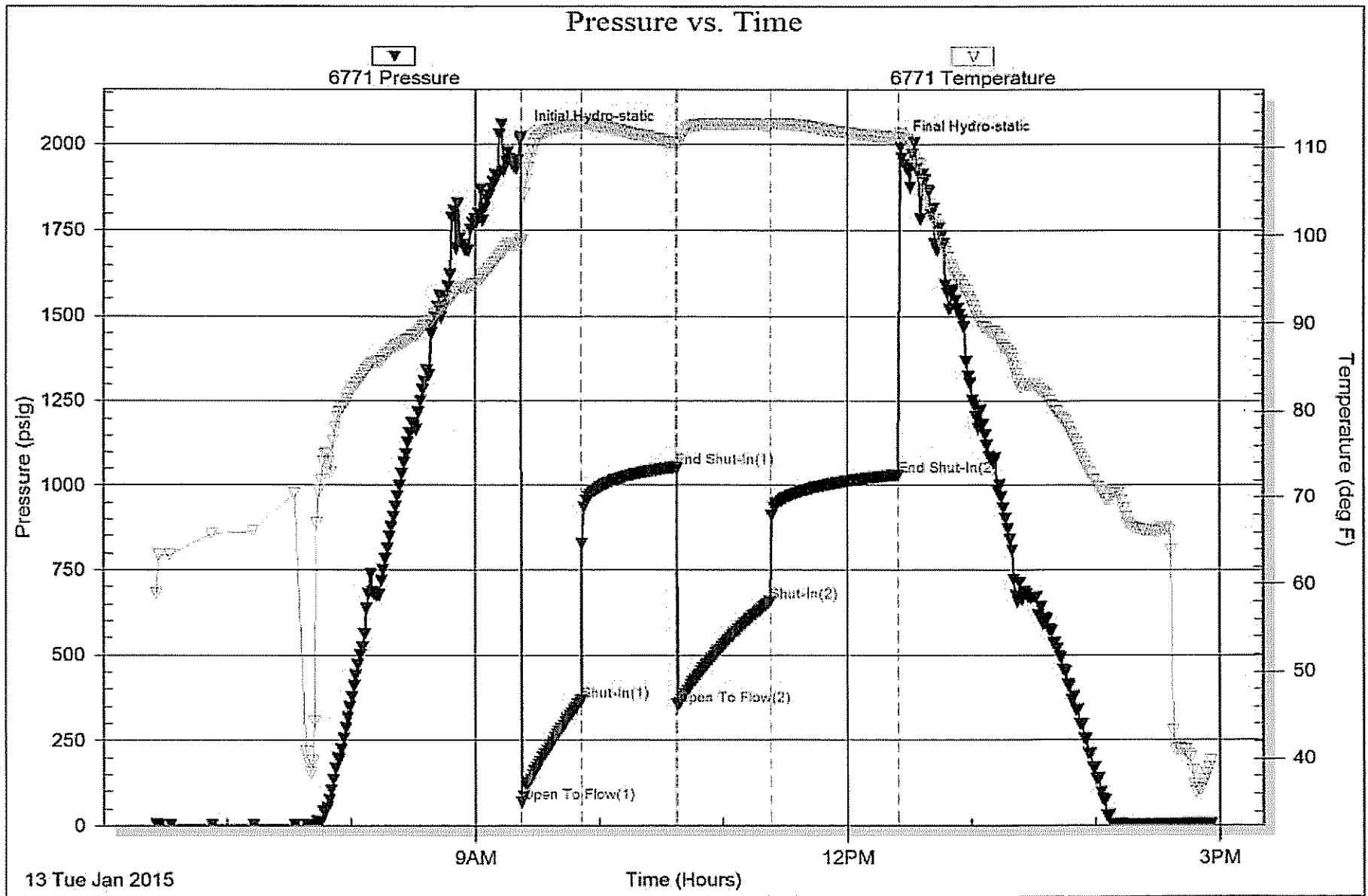
Num Gas Bombs: 0

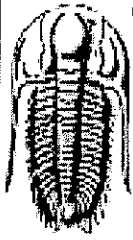
Serial #:

Laboratory Name:

Laboratory Location:

Recovery Comments: rw .337 @ 54\*f= 28,500 chlor





**TRILOBITE  
TESTING, INC.**

# DRILL STEM TEST REPORT

Lario Oil & Gas Inc

4-18s-35w Wichita, Ks

301 S Market  
Wichita, Ks  
67202

SS Country Store 2-4

Job Ticket: 61460

DST#: 2

ATTN: Steve Davis

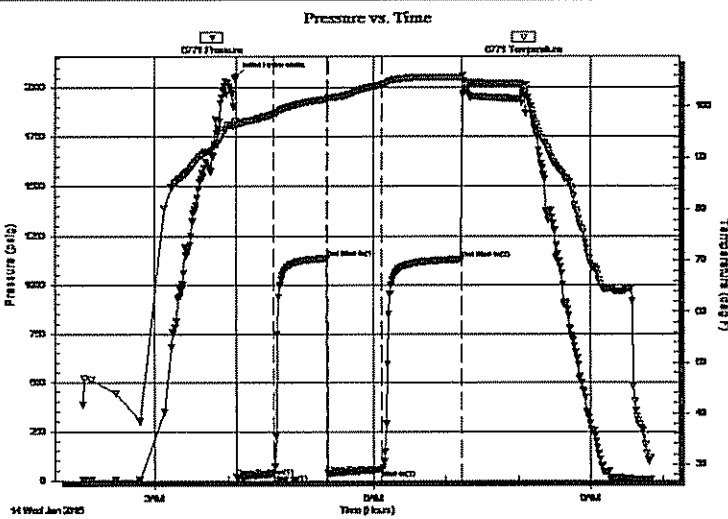
Test Start: 2015.01.14 @ 02:01:10

## GENERAL INFORMATION:

Formation: D  
 Deviated: No Whipstock: 0.00 ft (KB)  
 Time Tool Opened: 04:06:55  
 Time Test Ended: 10:00:25  
 Interval: 4140.00 ft (KB) To 4160.00 ft (KB) (TVD)  
 Total Depth: 4160.00 ft (KB) (TVD)  
 Hole Diameter: 7.88 inches Hole Condition: Fair  
 Test Type: Conventional Bottom Hole (Reset)  
 Tester: Shane McBride  
 Unit No: 55  
 Reference Elevations: 3203.00 ft (KB)  
 3194.00 ft (CF)  
 KB to GR/CF: 9.00 ft

Serial #: 6771 Outside  
 Press@RunDepth: 55.77 psig @ 4141.00 ft (KB) Capacity: 8000.00 psig  
 Start Date: 2015.01.14 End Date: 2015.01.14 Last Calib.: 2015.01.14  
 Start Time: 02:01:10 End Time: 09:50:25 Time On Btm: 2015.01.14 @ 04:06:40  
 Time Off Btm: 2015.01.14 @ 07:13:40

TEST COMMENT: 4 3/4" in blow  
 No return  
 4 1/4" in blow  
 No return



## PRESSURE SUMMARY

Time (Min.)	Pressure (psig)	Temp (deg F)	Annotation
0	2058.93	97.26	Initial Hydro-static
1	19.46	96.27	Open To Flow (1)
31	33.60	98.47	Shut-In(1)
75	1134.29	101.45	End Shut-In(1)
76	36.90	101.51	Open To Flow (2)
121	55.77	104.29	Shut-In(2)
186	1128.72	105.76	End Shut-In(2)
187	1962.78	106.12	Final Hydro-static

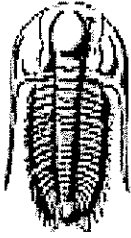
## Recovery

Length (ft)	Description	Volume (bbl)
40.00	free oil 100%o	0.56
50.00	o c m 30%o 70%m	0.70

## Gas Rates

	Choke (inches)	Pressure (psig)	Gas Rate (Mcf/d)

\* Recovery from multiple tests



**TRILOBITE  
TESTING, INC.**

# DRILL STEM TEST REPORT

FLUID SUMMARY

Lario Oil & Gas Inc

4-18s-35w Wichita, Ks

301 S Market  
Wichita, Ks  
67202

SS Country Store 2-4

Job Ticket: 61460

DST#: 2

ATTN: Steve Davis

Test Start: 2015.01.14 @ 02:01:10

## Mud and Cushion Information

Mud Type: Gel Chem

Cushion Type:

Oil API:

22 deg API

Mud Weight: 9.00 lb/gal

Cushion Length:

ft

Water Salinity:

0 ppm

Viscosity: 56.00 sec/qt

Cushion Volume:

bbf

Water Loss: 7.18 in<sup>3</sup>

Gas Cushion Type:

Resistivity: 0.00 ohm.m

Gas Cushion Pressure:

psig

Salinity: 5000.00 ppm

Filter Cake: 1.00 inches

## Recovery Information

Recovery Table

Length ft	Description	Volume bbf
40.00	free oil 100%o	0.561
50.00	o c m 30%o 70%m	0.701

Total Length: 90.00 ft

Total Volume: 1.262 bbf

Num Fluid Samples: 0

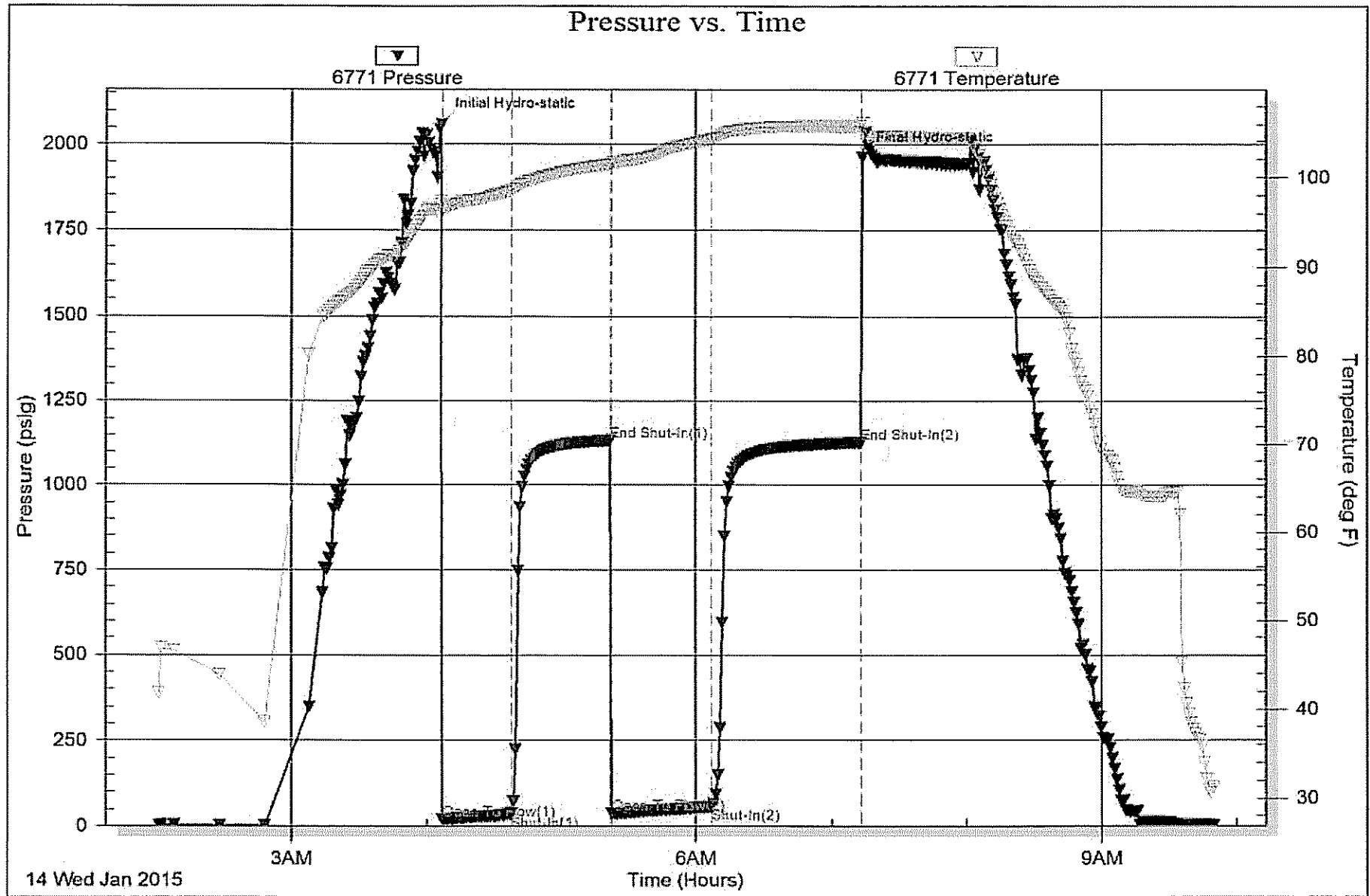
Num Gas Bombs: 0

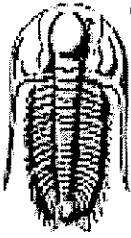
Serial #:

Laboratory Name:

Laboratory Location:

Recovery Comments:





**TRILOBITE  
TESTING, INC.**

# DRILL STEM TEST REPORT

Lario Oil & Gas Inc

4-18s-35w Wichita, Ks

301 S Market  
Wichita, Ks  
67202

SS Country Store#2-4

Job Ticket: 61461

DST#: 3

ATTN: Steve Davis

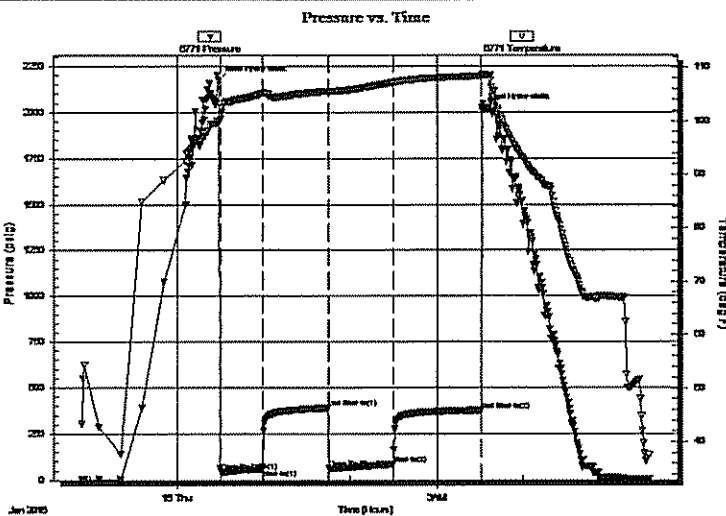
Test Start: 2015.01.14 @ 22:54:14

## GENERAL INFORMATION:

Formation: I  
 Deviated: No Whipstock: 0.00 ft (KB)  
 Time Tool Opened: 00:29:59  
 Time Test Ended: 05:45:44  
 Test Type: Conventional Bottom Hole (Reset)  
 Tester: Shane McBride  
 Unit No: 55  
 Interval: 4267.00 ft (KB) To 4292.00 ft (KB) (TVD)  
 Reference Elevations: 3203.00 ft (KB)  
 Total Depth: 4292.00 ft (KB) (TVD) 3194.00 ft (CF)  
 Hole Diameter: 7.88 inches Hole Condition: Fair KB to GR/CF: 9.00 ft

Serial #: 6771 Outside  
 Press@RunDepth: 86.18 psig @ 4268.00 ft (KB) Capacity: 8000.00 psig  
 Start Date: 2015.01.14 End Date: 2015.01.15 Last Calib.: 2015.01.15  
 Start Time: 22:54:14 End Time: 05:27:44 Time On Btm: 2015.01.15 @ 00:28:29  
 Time Off Btm: 2015.01.15 @ 03:31:14

TEST COMMENT: 7 1/2" in blow  
 No return  
 5" in blow  
 No return



## PRESSURE SUMMARY

Time (Min.)	Pressure (psig)	Temp (deg F)	Annotation
0	2174.43	100.19	Initial Hydro-static
2	46.64	100.41	Open To Flow (1)
31	61.61	105.21	Shut-In(1)
76	388.90	105.58	End Shut-In(1)
77	62.02	105.50	Open To Flow (2)
122	86.18	107.17	Shut-In(2)
183	377.82	108.37	End Shut-In(2)
183	2023.25	108.79	Final Hydro-static

## Recovery

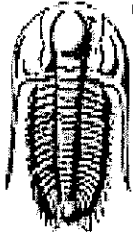
Length (ft)	Description	Volume (bbl)
25.00	free oil 100%o	0.35
60.00	o c m 35%o 65%m	0.84
60.00	s o c m 10%o 90%m	0.84

\* Recovery from multiple tests

## Gas Rates

	Choke (inches)	Pressure (psig)	Gas Rate (Mcf/d)





**TRILOBITE  
TESTING, INC.**

# DRILL STEM TEST REPORT

FLUID SUMMARY

Lario Oil & Gas Inc

4-18s-35w Wichita, Ks

301 S Market  
Wichita, Ks  
67202

SS Country Store#2-4

Job Ticket: 61461

DST#: 3

ATTN: Steve Davis

Test Start: 2015.01.14 @ 22:54:14

## Mud and Cushion Information

Mud Type: Gel Chem

Cushion Type:

Oil API:

24 deg API

Mud Weight: 9.00 lb/gal

Cushion Length:

ft

Water Salinity:

0 ppm

Viscosity: 53.00 sec/qt

Cushion Volume:

bbbl

Water Loss: 7.98 in<sup>3</sup>

Gas Cushion Type:

Resistivity: 0.00 ohm.m

Gas Cushion Pressure:

psig

Salinity: 6800.00 ppm

Filter Cake: 1.00 inches

## Recovery Information

Recovery Table

Length ft	Description	Volume bbbl
25.00	free oil 100%o	0.351
60.00	o c m 35%o 65%m	0.842
60.00	s o c m 10%o 90%m	0.842

Total Length: 145.00 ft

Total Volume: 2.035 bbl

Num Fluid Samples: 0

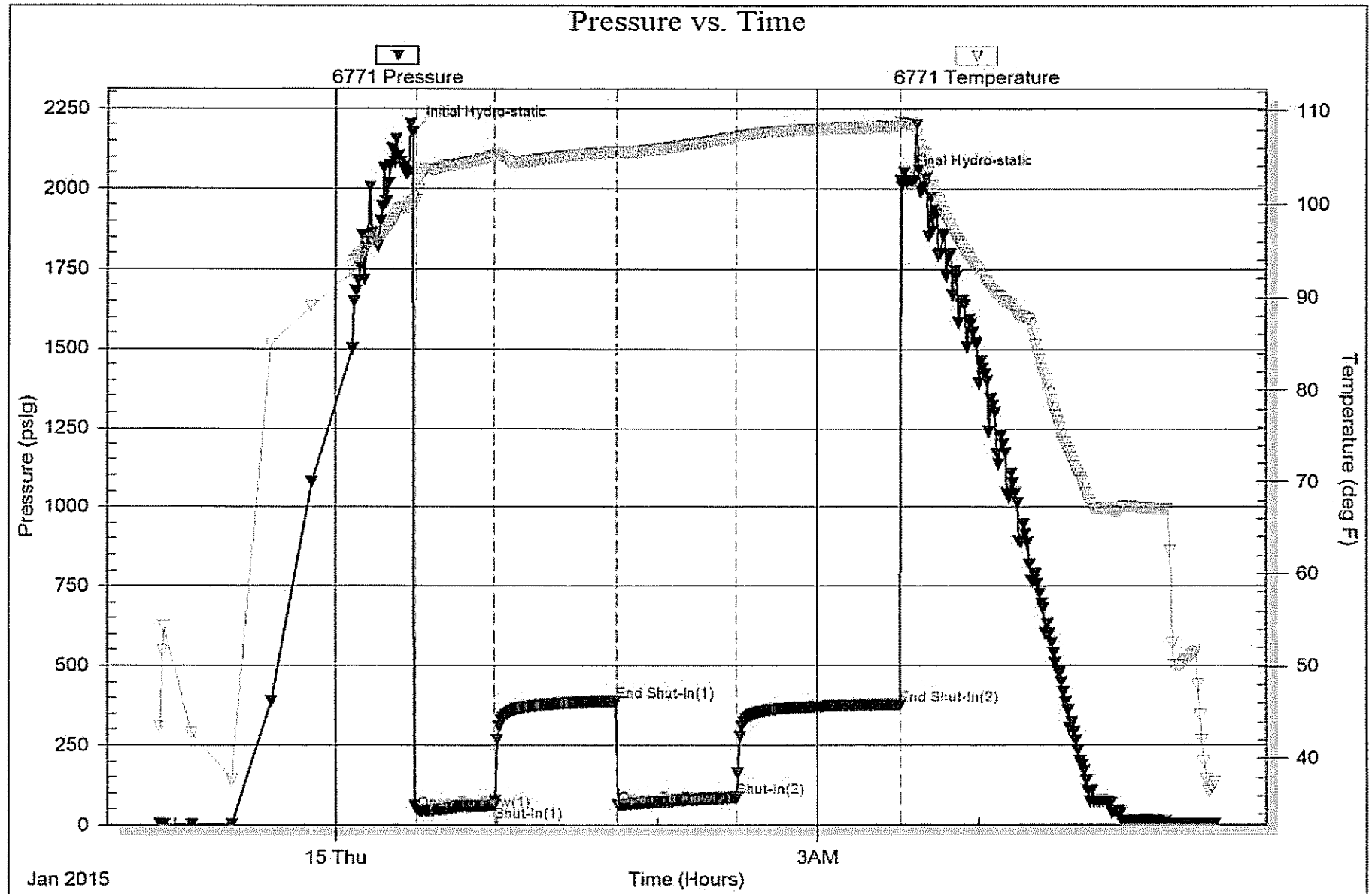
Num Gas Bombs: 0

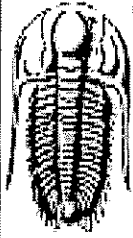
Serial #:

Laboratory Name:

Laboratory Location:

Recovery Comments:





**TRILOBITE  
TESTING, INC.**

# DRILL STEM TEST REPORT

Lario Oil & Gas Inc

4-18s-35w Wichita, Ks

301 S Market  
Wichita, Ks  
67202

**SS Country Store#2-4**

Job Ticket: 61462

DST#: 4

ATTN: Steve Davis

Test Start: 2015.01.16 @ 02:00:18

## GENERAL INFORMATION:

Formation: **Marmaton**

Deviated: No Whipstock: 0.00 ft (KB)

Time Tool Opened: 03:57:48

Time Test Ended: 09:45:33

Test Type: Conventional Bottom Hole (Reset)

Tester: Shane McBride

Unit No: 55

Interval: 4474.00 ft (KB) To 4540.00 ft (KB) (TVD)

Total Depth: 4540.00 ft (KB) (TVD)

Hole Diameter: 7.88 inches Hole Condition: Fair

Reference Elevations: 3203.00 ft (KB)

3194.00 ft (CF)

KB to GR/CF: 9.00 ft

Serial #: 6771 Outside

Press@RunDepth: 43.67 psig @ 4475.00 ft (KB)

Start Date: 2015.01.16

End Date:

2015.01.16

Start Time: 02:00:18

End Time:

09:27:33

Capacity: 8000.00 psig

Last Calib.: 2015.01.16

Time On Btm: 2015.01.16 @ 03:57:33

Time Off Btm: 2015.01.16 @ 07:01:18

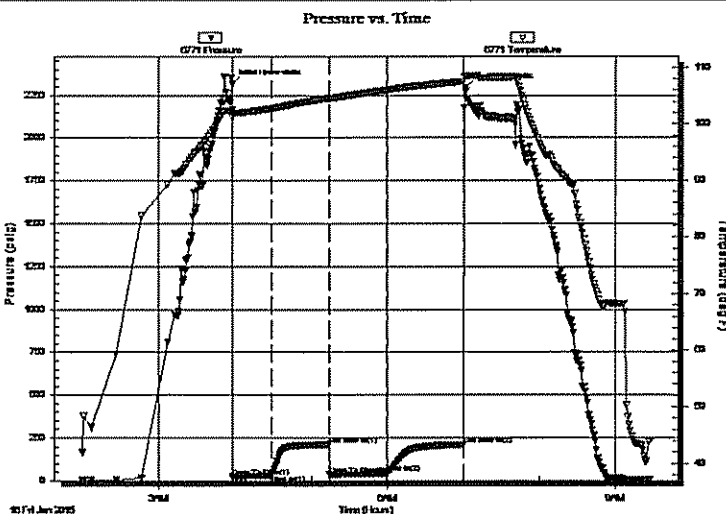
TEST COMMENT: 3 1/2" blow

No return

3" blow

No return

## PRESSURE SUMMARY



Time (Min.)	Pressure (psig)	Temp (deg F)	Annotation
0	2315.92	102.43	Initial Hydro-static
1	23.71	101.11	Open To Flow (1)
31	31.61	102.71	Shut-In(1)
76	211.50	104.56	End Shut-In(1)
77	35.76	104.52	Open To Flow (2)
122	43.67	105.99	Shut-In(2)
183	209.12	107.53	End Shut-In(2)
184	2294.48	108.42	Final Hydro-static

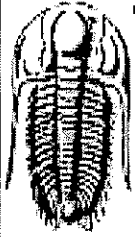
## Recovery

Length (ft)	Description	Volume (bbl)
25.00	free oil 100%o	0.35
30.00	o c m 25%o 75%m	0.42

## Gas Rates

	Choke (Inches)	Pressure (psig)	Gas Rate (Mcf/d)

\* Recovery from multiple tests



**TRILOBITE  
TESTING, INC.**

# DRILL STEM TEST REPORT

**FLUID SUMMARY**

Lario Oil & Gas Inc

4-18s-35w Wichita, Ks

301 S Market  
Wichita, Ks  
67202

**SS Country Store#2-4**

Job Ticket: 61462

DST#: 4

ATTN: Steve Davis

Test Start: 2015.01.16 @ 02:00:18

## Mud and Cushion Information

Mud Type: Gel Chem

Cushion Type:

Oil API:

29 deg API

Mud Weight: 9.00 lb/gal

Cushion Length:

ft

Water Salinity:

0 ppm

Viscosity: 62.00 sec/qt

Cushion Volume:

bbl

Water Loss: 9.58 in<sup>3</sup>

Gas Cushion Type:

Resistivity: 0.00 ohm.m

Gas Cushion Pressure:

psig

Salinity: 8300.00 ppm

Filter Cake: 2.00 inches

## Recovery Information

Recovery Table

Length ft	Description	Volume bbl
25.00	free oil 100%	0.351
30.00	o c m 25% o 75% m	0.421

Total Length: 55.00 ft

Total Volume: 0.772 bbl

Num Fluid Samples: 0

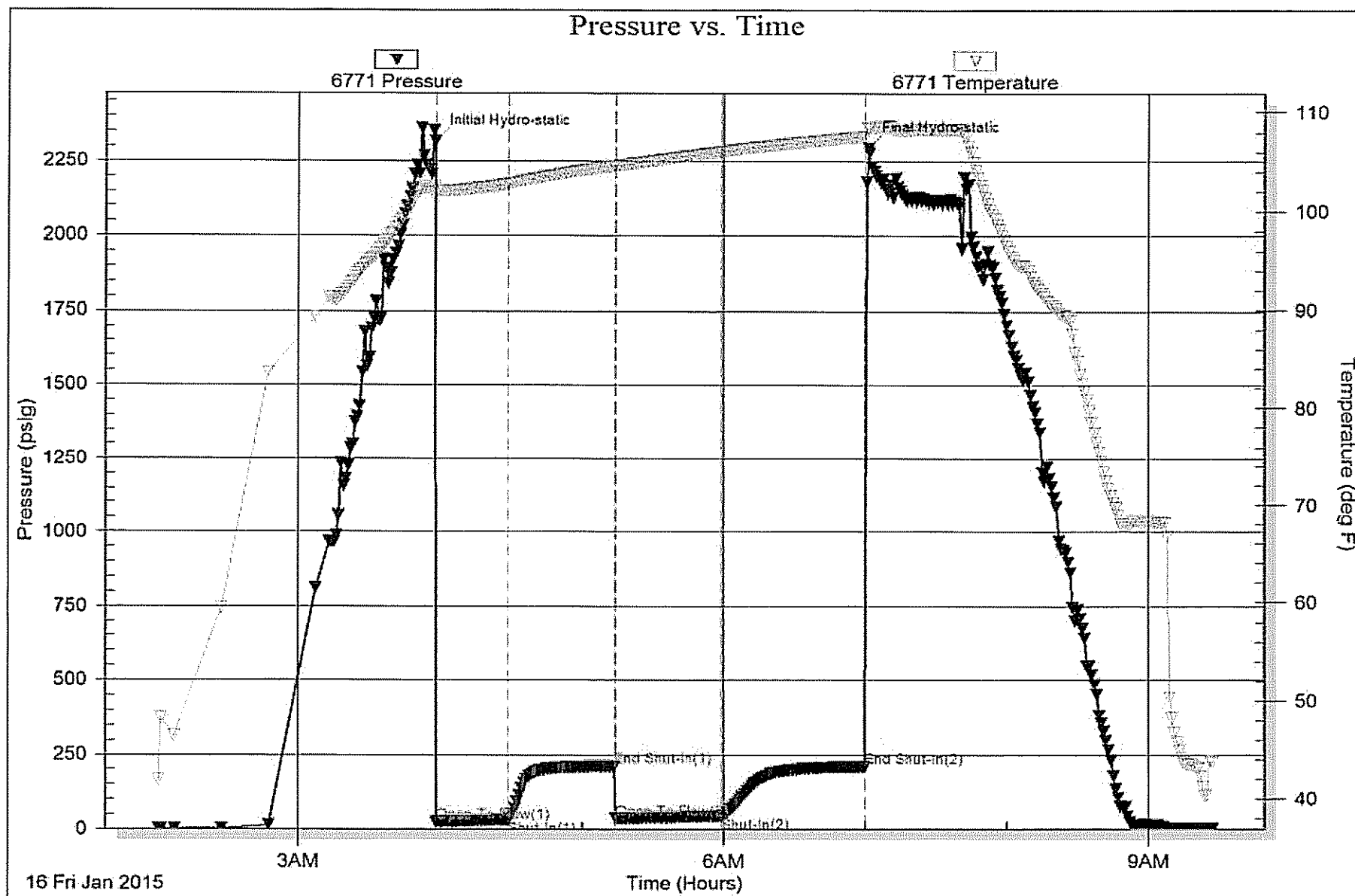
Num Gas Bombs: 0

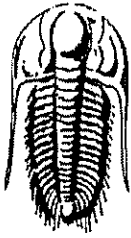
Serial #:

Laboratory Name:

Laboratory Location:

Recovery Comments:





**TRILOBITE  
TESTING, INC.**

# DRILL STEM TEST REPORT

Lario Oil & Gas Inc

4-18s-35w Wichita, Ks

301 S Market  
Wichita, Ks  
67202

SS Country Store#2-4

Job Ticket: 61463

DST#: 5

ATTN: Steve Davis

Test Start: 2015.01.17 @ 16:16:10

## GENERAL INFORMATION:

Formation: **Morrow**

Deviated: No Whipstock: 0.00 ft (KB)

Time Tool Opened: 18:10:55

Time Test Ended: 23:05:55

Test Type: Conventional Bottom Hole (Reset)

Tester: Shane McBride

Unit No: 55

Interval: 4800.00 ft (KB) To 4850.00 ft (KB) (TVD)

Reference Elevations: 3203.00 ft (KB)

Total Depth: 4850.00 ft (KB) (TVD)

3194.00 ft (CF)

Hole Diameter: 7.88 inches Hole Condition: Fair

KB to GR/CF: 9.00 ft

Serial #: 6771

Outside

Press@RunDepth: 31.57 psig @ 4801.00 ft (KB)

Capacity: 8000.00 psig

Start Date: 2015.01.17

End Date:

2015.01.17

Last Calib.: 2015.01.17

Start Time: 16:16:10

End Time:

22:49:55

Time On Btm: 2015.01.17 @ 18:10:40

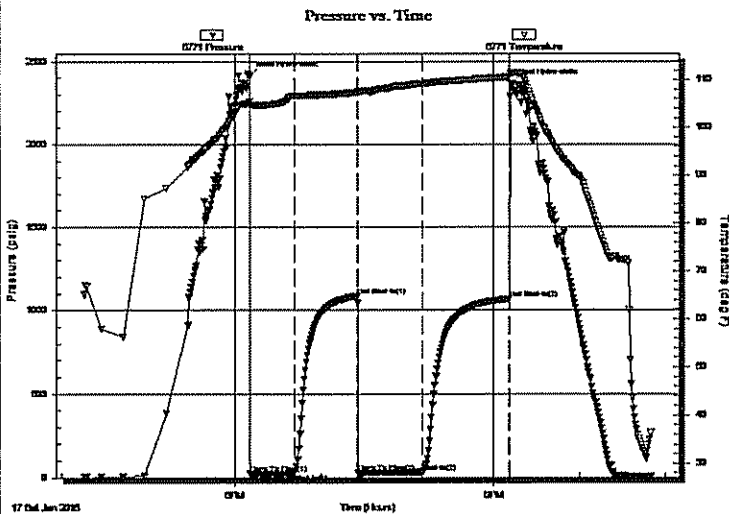
Time Off Btm: 2015.01.17 @ 21:12:10

TEST COMMENT: 1/4" in blow, died back to a weak surface blow

No return

No blow

No return



## PRESSURE SUMMARY

Time (Min.)	Pressure (psig)	Temp (deg F)	Annotation
0	2411.84	105.52	Initial Hydro-static
1	20.76	104.82	Open To Flow (1)
31	24.89	106.76	Shut-In(1)
75	1086.83	107.39	End Shut-In(1)
76	25.90	107.43	Open To Flow (2)
120	31.57	109.22	Shut-In(2)
181	1069.49	110.60	End Shut-In(2)
182	2363.27	111.51	Final Hydro-static

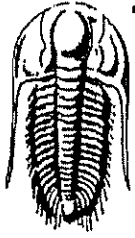
## Recovery

Length (ft)	Description	Volume (bbl)
25.00	mud 100% m	0.35

\* Recovery from multiple tests

## Gas Rates

	Choke (Inches)	Pressure (psig)	Gas Rate (Mc/d)



**TRILOBITE  
TESTING, INC.**

**DRILL STEM TEST REPORT**

**FLUID SUMMARY**

Lario Oil & Gas Inc

**4-18s-35w Wichita, Ks**

301 S Market  
Wichita, Ks  
67202

**SS Country Store#2-4**

Job Ticket: 61463

DST#: 5

ATTN: Steve Davis

Test Start: 2015.01.17 @ 16:16:10

**Mud and Cushion Information**

Mud Type: Gel Chem

Cushion Type:

Oil API:

0 deg API

Mud Weight: 9.00 lb/gal

Cushion Length:

ft

Water Salinity:

0 ppm

Viscosity: 63.00 sec/qt

Cushion Volume:

bbf

Water Loss: 8.77 in<sup>3</sup>

Gas Cushion Type:

Resistivity: 0.00 ohm.m

Gas Cushion Pressure:

psig

Salinity: 8000.00 ppm

Filter Cake: 2.00 inches

**Recovery Information**

Recovery Table

Length ft	Description	Volume bbf
25.00	mud 100% <sub>m</sub>	0.351

Total Length: 25.00 ft

Total Volume: 0.351 bbf

Num Fluid Samples: 0

Num Gas Bombs: 0

Serial #:

Laboratory Name:

Laboratory Location:

Recovery Comments:

