

# HALLIBURTON

iCem<sup>®</sup> Service

**TAPSTONE ENERGY LLC**

**For:**

Date: Wednesday, January 07, 2015

**Schupbach 33-2h**

Case 1

Sincerely,

## Legal Notice

---

### Warning Disclaimer

Although the information contained in this report is based on sound engineering practices, the copyright owner(s) does (do) not accept any responsibility whatsoever, in negligence or otherwise, for any loss or damage arising from the possession or use of the report whether in terms of correctness or otherwise. The application, therefore, by the user of this report or any part thereof, is solely at the user's own risk.

### Limitations of Liability

Except as expressly set forth herein, there are no representations or warranties by Halliburton, express or implied, including implied warranties of merchantability and/or fitness for a particular purpose. In no event will Halliburton or its suppliers be liable for consequential, incidental, special, punitive or exemplary damages (including, without limitation, loss of data, profits, use of hardware, or software). Customer accepts full responsibility for any investment made based on results from the Software. Any interpretations, analyses or modeling of any data, including, but not limited to Customer data, and any recommendation or decisions based upon such interpretations, analyses or modeling are opinions based upon inferences from measurements and empirical relationships and assumptions, which inferences and assumptions are not infallible, and with respect to which professional may differ. Accordingly, Halliburton cannot and does not warrant the accuracy, correctness or completeness of any such interpretation, recommendation, modeling or other products of the Software Product. As such, any interpretation, recommendation or modeling resulting from the Software for the purpose of any drilling, well treatment, production or financial decision will be at the sole risk of Customer. Under no circumstances will Halliburton or its suppliers be liable for any damages.

# HALLIBURTON

Table of Contents

---

To Generate a Table of Contents, right click here. Click "Update Field." If prompted, select "Entire Table."

---

## 1.0 Job Design

---

### 1.1 Time of Stages

---

<b>Graph Label</b>	<b>Time (min)</b>	<b>Stage Starts Pumping</b>	<b>Stage Enters Annulus</b>
①	0	Pre-Rig Down Safety Meeting	
②	0	Rig-Down Completed	
③	0	Depart Location	
④	0	Pre-Convoy Safety Meeting	
⑤	0	Other	

---

2.0 Hydraulics Summary

3.0 Temperature Modeling

4.0 Real-Time Job Summary

---

4.1 Stage Summary - Liquid Volume, Density, & Design Shutdown

---

4.2 Stage Summary - Pump Pressure & ECD

---

4.3 Stage Summary - Pump Rate & Nitrogen Rate

---

4.4 Shutdown Summary

---

## 4.5 Job Event Log

Type	Seq. No.	Activity	Graph Label	Date	Time	Source	PS Pump Press (psi)	DH Density (ppg)	Comb Pump Rate (bbl/min)	Comments
Event	1	Call Out	Call Out	1/7/2015	02:00:00	USER				
Event	2	Pre-Convoy Safety Meeting	Pre-Convoy Safety Meeting	1/7/2015	03:30:00	USER				use smith driving skills stay on route know your route
Event	3	Arrive At Loc	Arrive At Loc	1/7/2015	06:30:00	USER				
Event	4	Other	Other	1/7/2015	08:00:00	USER				wait on rig to run casing
Event	5	Pre-Rig Up Safety Meeting	Pre-Rig Up Safety Meeting	1/7/2015	14:30:00	USER				watch slips falls line of fire stay hydrated
Event	6	Rig-Up Completed	Rig-Up Completed	1/7/2015	15:15:00	USER				
Event	7	Pre-Job Safety Meeting	Pre-Job Safety Meeting	1/7/2015	15:30:00	USER				dont step over psi iron watch out for each other stay hydrated
Event	8	Test Lines	Test Lines	1/7/2015	15:51:08	COM5	3000.00	8.34	0.00	test lines 500psi low 3000psi high good test
Event	9	Pump Spacer 1	Pump Spacer 1	1/7/2015	15:53:49	COM5	76.00	8.34	3.00	pumped 10bbbls water ahead good returns
Event	10	Pump Cement	Pump Cement	1/7/2015	15:57:08	COM5	162.00	15.00	5.00	pump 115bbbls (490sks) at 15# good returns
Event	11	Shutdown	Shutdown	1/7/2015	16:22:00	USER				
Event	12	Drop Top Plug	Drop Top Plug	1/7/2015	16:26:00	USER				
Event	13	Pump Displacement	Pump Displacement	1/7/2015	16:26:09	COM5	323.00	8.34	6.00	pump 60bbbls of water good returns
Event	14	Other	Other	1/7/2015	16:35:00	USER				40bbbls cement back to surface
Event	15	Bump Plug	Bump Plug	1/7/2015	16:47:46	COM5	882.00	8.34	0.00	Bumped plug 330 to 880 psi
Event	16	Check Floats	Check Floats	1/7/2015	16:50:45	USER				floats holding 1/2 bbl back
Event	17	Pre-Rig Down Safety Meeting	Pre-Rig Down Safety Meeting	1/7/2015	16:55:00	USER				watch slips falls line of fire stay hydrated
Event	18	Rig-Down Completed	Rig-Down Completed	1/7/2015	17:15:00	USER				

Type	Seq. No.	Activity	Graph Label	Date	Time	Source	PS Pump Press (psi)	DH Density (ppg)	Comb Pump Rate (bbl/min)	Comments
Event	19	Pre-Convoy Safety Meeting	Pre-Convoy Safety Meeting	1/7/2015	17:20:00	USER				use smith driving skills stay on route know your route
Event	20	Depart Location	Depart Location	1/7/2015	17:45:00	USER				

## 5.0 Attachments

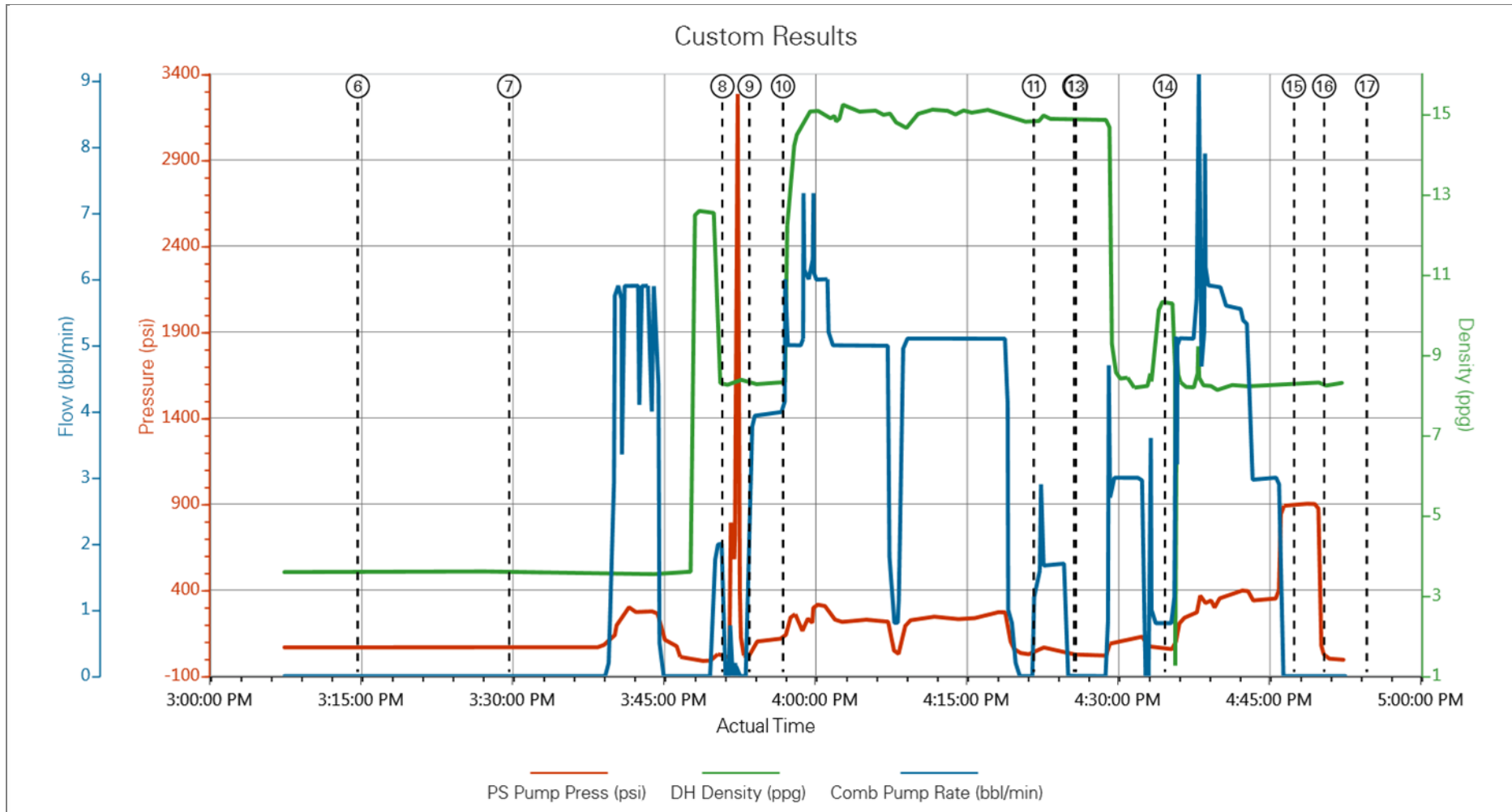
### 5.1 Case 1-Custom Results.png





## 6.0 Custom Graphs

### 6.1 Custom Graph



7.0 Appendix

---



7.1 One-Minutes Real-Time Data Listing

---