



**CONSOLIDATED**  
Oil Well Services, LLC

REMIT TO  
Consolidated Oil Well Services, LLC  
Dept:970  
P.O.Box 4346  
Houston, TX 77210-4346

MAIN OFFICE

P.O.Box884  
Chanute,KS 66720  
620/431-9210,1-800/467-8676  
Fax 620/431-0012

Invoice

Invoice#

803136

Invoice Date: 01/27/15

Terms: C.O.D.

Page 1

LARIO OIL & GAS

P.O. BOX 1093  
GARDEN CITY KS 637846  
USA  
3162655611

KNAPP #9-31

*Drilling ops 15-010  
1-30-15*

Part No	Description	Quantity	Unit Price	Discount(%)	Total
5401S	Cement Pump Truck - Surface	1.000	1,150.0000	20.000	920.00
5406	Mileage Charge	10.000	5.2500	20.000	42.00
5407	Min. Bulk Delivery Charge	1.000	430.0000	20.000	344.00
1104S	Class A Cement	215.000	18.5500	20.000	3,190.60
1102	Calcium Chloride (50#)	606.000	0.9400	20.000	455.71
1118B	Premium Gel / Bentonite	404.000	0.2700	20.000	87.26
1111	Sodium Chloride (Granulated Salt)	100.000	0.0000	0.000	0.00

Subtotal 6,299.47

Discounted Amount 1,259.89

SubTotal After Discount 5,039.58

Amount Due 6,668.16 If paid after 01/27/15

Tax: 294.95

Total: 5,334.52

*REP*

*XC*  
*XC*  
*[Signature]*



**CONSOLIDATED**  
Oil Well Services, LLC

1921  
1862

TICKET NUMBER 47929

LOCATION Oakley KS

FOREMAN Dane Petzlott

PO Box 884, Chanute, KS 66720  
620-431-9210 or 800-467-8676

**FIELD TICKET & TREATMENT REPORT**  
**CEMENT INVOICE #803136**

DATE	CUSTOMER #	WELL NAME & NUMBER	SECTION	TOWNSHIP	RANGE	COUNTY
1-24-14	4793	Knapp #9-31	31	13	31	Grave, KS
CUSTOMER			TRUCK #	DRIVER	TRUCK #	DRIVER
MAILING ADDRESS			731	Jeremy		
CITY			693	Coody		
STATE		ZIP CODE				

JOB TYPE Surface HOLE SIZE 12 1/4 HOLE DEPTH 295 CASING SIZE & WEIGHT 8 5/8 24 LBS  
 CASING DEPTH 295 DRILL PIPE \_\_\_\_\_ TUBING \_\_\_\_\_ OTHER \_\_\_\_\_  
 SLURRY WEIGHT 14.8 SLURRY VOL 1.36 WATER gal/sk 6.5 CEMENT LEFT in CASING 20  
 DISPLACEMENT 17.51 DISPLACEMENT PSI \_\_\_\_\_ MIX PSI \_\_\_\_\_ RATE \_\_\_\_\_

REMARKS: Safety meeting. Rig up. Break circulation with rig pump. Mix 215 sks of class A 30% cc 2% gel. Displace 17.5 BBls of water. Shut in. Cement did circulate.

Thanks Dane + crew

ACCOUNT CODE	QUANTITY or UNITS	DESCRIPTION of SERVICES or PRODUCT	UNIT PRICE	TOTAL
5401s	1	PUMP CHARGE	1150.00	1150.00
5406	10	MILEAGE	5.25	52.50
5407A	10.1	Ton Mileage Delivery (min)	1.75	430.00
1104s	215 sks	Class A cement	18.55	3988.25
1102	606 #	Calcium Chloride	.94	569.64
1118A	404 #	Bentonite	.27	107.08
1111	100 #	Salt	NC	NC
			Sub	6299.47
			less 10%	1259.89
			Total	5039.58
			SALES TAX	294.95
			ESTIMATED TOTAL	5334.53

Revin 3797 AUTHORIZATION Dane Petzlott TITLE Toolpusher DATE \_\_\_\_\_

I acknowledge that the payment terms, unless specifically amended in writing on the front of the form or in the customer's account records, at our office, and conditions of service on the back of this form are in effect for services identified on this form.

## TERMS

In consideration of the prices to be charged for Consolidated Oil Well Services, LLC (COWS) services, equipment and products and for the performance of services and supplying of materials, Customer agrees to the following terms and conditions.

Terms. Cash in advance unless satisfactory credit is established. On credit sales, invoices are payable within 30 days of the invoice date. On all invoices not paid within 30 days, Customer agrees to pay COWS interest at the rate of 18% per annum or the maximum rate allowed by law, whichever is higher. In the event COWS retains an attorney to pursue collection of any account, Customer agrees to pay all collection costs and attorney's fees incurred by COWS.

Any applicable federal, state or local sales, use occupation, consumer's or emergency taxes shall be added to the quoted price. All process license fees required to be paid to others will be added to the scheduled prices.

All COWS' prices are subject to change without notice.

## SERVICE CONDITIONS

Customer warrants that the well is in proper condition to receive the services, equipment, products and materials to be supplied by COWS. The Customer shall at all time have complete care, custody, and control of the well, the drilling and production equipment at the well, and the premises about the well. A responsible representative of the Customer shall be present to specify depths, pressures, or materials used for any service which is to be performed.

(a) COWS shall not be responsible for any claim, cause of action or demand (hereinafter referred to as a 'claim') for damage to property, or injury to or death of employees and representatives, of Customer or the well owner (if different from Customer), unless such damage, injury or death is caused by the willful misconduct or gross negligence of COWS, including but not limited to sub-surface damage and surface damage arising from sub-surface damage.

(b) Unless a claim is the result of the sole willful misconduct or gross negligence of COWS, Customer shall be responsible for and indemnify and hold COWS harmless from any claim for: (1) reservoir loss or damage, or property damage resulting from sub-surface pressure, losing control of the well and/or a well blowout; (2) damages as a result of a subsurface trespass, or an action in the nature thereof, arising from a service operation performed by COWS; (3) injury to or death of persons, other than employees of COWS, or damage to property (including, but not limited to, injury to the well), or any damages whatsoever, irrespective of cause, growing out of or in any way connected with the use of radioactive material in the well hole; and (4) well damage or reservoir damage caused by (i) loss of circulation, cement invasion, cement misplacement, pumping cement or cement plugs on wells with loss of circulation, including the failure to displace plug to proper depth, (ii) sub-surface pressure and resulting failure to complete pumping of cement or cement plug, including dehydration of cement slurry or flashing, plugged float shoe, annulus bridging or plugging, or (iii) down hole tools being lost or left in the well, or becoming stuck in the well for any reason and by any cause. COWS may furnish down hole tools and may supply supervision for the running and placement of such tools but will not be liable for any damage, loss or result caused by the use of such tools.

Furthermore, Customer will be responsible for the cost to replace such tools if they are lost or left in the well.

(c) COWS makes no guarantee of the effectiveness of any COWS' products, supplies or materials, or the results of any COWS' treatment or services.

(d) Because of the uncertainty of variable well conditions and the necessity of relying on facts and supporting services furnished by others, COWS is unable to guarantee the accuracy of any chart interpretation, research analysis, job recommendation or other data furnished by COWS. COWS' personnel will use their best efforts in gathering such information and their best judgement in interpreting it, but Customer agrees that COWS shall not be responsible for any damage arising from the use of such information except where due to COWS' gross negligence or willful misconduct in the preparation or furnishing of it.

(e) COWS may buy and re-sell to Customer down hole equipment, including but not limited to float equipment, DV tools, port collars, type A & B packers, and Customer agrees that COWS is not an agent or dealer for the companies who manufacture such items, and further agrees that Customer shall be solely responsible for and indemnify COWS against any claim with regard to the effectiveness, malfunction of, or functionality of such items.

## WARRANTIES - LIMITATION OF LIABILITY

COWS warrants title to the products, supplies and materials, and that the same are free from defects in workmanship and materials. THERE ARE NO OTHER WARRANTIES, EXPRESS OR IMPLIED, NOR ANY WARRANTY OF MERCHANTABILITY OR FITNESS FOR PURPOSE, WHICH EXTEND BEYOND THOSE STATED IN THE IMMEDIATELY PRECEDING SENTENCE. COWS's liability and Customer's exclusive remedy in any claim (whether in contract, tort, breach of warranty or otherwise,) arising out of the sale or use of any COWS' products, supplies, materials or services is expressly limited to the replacement of such products, supplies, materials or services or their return to COWS or, at COWS' option, an allowance to Customer of credit for the cost of such items.

Customer waives and releases all claims against COWS for any special, incidental, indirect, consequential or punitive damages.



**CONSOLIDATED**  
Oil Well Services, LLC

REMIT TO  
Consolidated Oil Well Services, LLC  
Dept:970  
P.O.Box 4346  
Houston, TX 77210-4346

MAIN OFFICE

P.O.Box884  
Chanute,KS 66720  
620/431-9210,1-800/467-8676  
Fax 620/431-0012

Invoice

Invoice#

803338

Invoice Date: 02/10/15

Terms: C.O.D.

Page 1

LARIO OIL & GAS

P.O. BOX 1093  
GARDEN CITY KS 637846  
USA  
3162655611

KNAPP 9-31

*Brilling a/c 15-010  
2-12-15 ZK*

Part No	Description	Quantity	Unit Price	Discount(%)	Total
5401C	Single Pump	1.000	3,227.5000	20.000	2,582.00
5406	Mileage Charge	10.000	5.2500	20.000	42.00
5407A	Ton Mileage Delivery Charge	1.000	474.9500	20.000	379.96
1126-0130	Oil Well Cement	120.000	23.7000	20.000	2,275.20
1110A	Kol Seal (50# BAG)	600.000	0.5600	20.000	268.80
1131	60/40 Poz Mix	500.000	15.8600	20.000	6,344.00
1118B	Premium Gel / Bentonite	3,440.000	0.2700	20.000	743.04
1107	Flo-Seal	125.000	2.9700	20.000	297.00
4159	Float Shoe AFU 5 1/2	1.000	433.7500	20.000	347.00
4454	5 1/2 Latch Down Plug	1.000	567.0000	20.000	453.60
4130	Centralizer 5 1/2	16.000	61.0000	20.000	780.80
4104	Cement Basket 5 1/2	1.000	290.0000	20.000	232.00
4283	DV Tool w/Latch Down	1.000	4,900.0000	20.000	3,920.00
1144G-0130	Mud Flush - Oakley	500.000	1.0000	20.000	400.00
1111	Sodium Chloride (Granulated Salt)	100.000	0.0000	0.000	0.00

Subtotal 23,831.75  
Discounted Amount 4,766.35  
SubTotal After Discount 19,065.40  
Amount Due 25,417.82 If paid after 02/10/15

*46*  
FEB 18 2015  
*10*

Tax: 1,268.86  
Total: 20,334.26



**CONSOLIDATED**  
Oil Well Services, LLC

5079

PO 3114

TICKET NUMBER 46587

LOCATION Johnev, KS

FOREMAN Kelly Gabel

Miles Shaw

PO Box 884, Chanute, KS 66720  
620-431-9210 or 800-467-8676

**FIELD TICKET & TREATMENT REPORT**  
**CEMENT**

KS

DATE	CUSTOMER #	WELL NAME & NUMBER	SECTION	TOWNSHIP	RANGE	COUNTY
2-6-15	4793	Knapp 9-31	31	135	31W	Gove
CUSTOMER			TRUCK# DRIVER TRUCK# DRIVER			
MAILING ADDRESS			TRUCK# DRIVER TRUCK# DRIVER			
CITY STATE ZIP CODE			TRUCK# DRIVER TRUCK# DRIVER			

JOB TYPE Prod-DV HOLE SIZE 2 7/8 HOLE DEPTH 4700' CASING SIZE & WEIGHT 5 1/2 14#  
 CASING DEPTH 4685.63 DRILL PIPE \_\_\_\_\_ TUBING DV @ 2451.03 OTHER \_\_\_\_\_  
 SLURRY WEIGHT 14<sup>2</sup>, 12<sup>5</sup> SLURRY VOL 1,42, 1,89 WATER gal/sk \_\_\_\_\_ CEMENT LEFT in CASING 21.1 (shoe)  
 DISPLACEMENT 113.8, 59.8 DISPLACEMENT PSI \_\_\_\_\_ MIX PSI \_\_\_\_\_ RATE \_\_\_\_\_

REMARKS: Safety meeting, Don float equip on st #5 cent, 11, 109, 107, 105, 103, 101  
99, 97, 95, 93, 91, 89, 87, 85 basket #61, DV Top #60, ramp pipe to bottom  
pumped ball through shoe, circulated for 1hr, mixed 120 sks OWC  
5# Kol-seal washed out pumps, released plugs displaced with 56 bbl water  
63 bbl mud with a lift pressure of 600 # Plug landed @ 1300 # dropped DV dart  
opened tool & circulated for 3 hrs mixed 30 sks RH, mixed 470 sks 60/40 Poz  
8 7/8 gel 1/4 # Flo-seal down center, released plugs displaced with 80 bbl  
water lift pressure 1000 # Plug landed @ 1500 # released pressure float held,  
after shut down back side went on vacuum, cement did not  
circulate

*Thank You Kelly, Miles & crew*

ACCOUNT CODE	QUANTITY or UNITS	DESCRIPTION of SERVICES or PRODUCT	UNIT PRICE	TOTAL
5401C	1	PUMP CHARGE	3227.00	3227.00
5406	10	MILEAGE	5.25	52.50
5407A	27.14	Ten mileage delivery	1.75	474.95
1126	120 SKS	OWC	23.70	2844.00
1110A	600 #	Kol-seal	.56	336.00
1131	500 SKS	60/40 Poz	15.86	7930.00
1118B	3440 #	Gel	.37	1272.80
1107	125 #	Flo-seal	2.97	371.25
4159	1	5 1/2 AFK floatshoe (w)	433.75	433.75
4454	1	5 1/2 latchdown / plug (w)	567.00	567.00
4130	16	5 1/2 centralizer (w)	61.00	976.00
4104	1	5 1/2 basket (w)	290.00	290.00
4283	1	DV Tool	4900.00	4900.00
1144G	500 gal	mud flush	1.00	500.00
111	100 #	Salt	NC	NC
			5 w/d	23,831.25
		<u>20070 4766 35 Total</u>		<u>19,065.90</u>
			SALES TAX	<u>1,269.86</u>
			ESTIMATED TOTAL	<u>20,334.26</u>

Revin 3737

AS Per bid

AUTHORIZATION \_\_\_\_\_ TITLE \_\_\_\_\_ DATE 2-6-15

I acknowledge that the payment terms, unless specifically amended in writing on the front of the form or in the customer's account records, at our office, and conditions of service on the back of this form are in effect for services identified on this form.

# Consolidated oil well services

Friday, January 02, 2015  
10:25 AM

cement bid for: LARIO OIL&GAS

Type of job PRODUCTION 5 1/2-4750',1,150' FILL, DV@2350'  
Lease- KNAPP #9-31  
County-GOVE  
State- KS  
Legals-SEC 31-13S-31W

BOTTOM STAGE: 180 SKS OWC,5# KOLSEAL,500 GAL MUD FLUSH  
YIELD 1.42@13.8  
TOP STAGE: 450 SKS 60/40POZ,8%GEL,1/4# FLO SEAL  
YIELD 1.89@12.5

Pump truck- 3,175.00  
10 miles- 52.50  
TOTAL=3,,227.50

180 SKS OWC-4,266.00  
450 SKS 60/40POZ-7,137.00  
3,096# GEL - 835.92  
900# KOLSEAL-504.00  
113# FLOSEAL-335.61  
500 GAL MUD  
FLUSH -500.00  
27.81 TON MILES-486.70  
TOTAL= 14,065.23

FLOAT EQUIPMENT 5 1/2  
1-AFU FLOAT SHOE- 433.75  
1-LATCH DOWN ASSY-567.00  
16-CENTRALIZERS- 976.00  
1-BASKET - 290.00  
1-DV TOOL - 4,900.00  
TOTAL= 7,166.75

PUMPTRUCK- 3,227.50  
MATERIAL- 14,065.23  
FLOAT EQUIPMENT-7,166.75  
SUB TOTAL=24,459.48  
LESS 20% - 4,891.90  
TOTAL= 19,567.58

TAX INCLUDED AT INVOICING

BID BY: WALT DINKEL

## TERMS

In consideration of the prices to be charged for Consolidated Oil Well Services, LLC (COWS) services, equipment and products and for the performance of services and supplying of materials, Customer agrees to the following terms and conditions.

Terms. Cash in advance unless satisfactory credit is established. On credit sales, invoices are payable within 30 days of the invoice date. On all invoices not paid within 30 days, Customer agrees to pay COWS interest at the rate of 18% per annum or the maximum rate allowed by law, whichever is higher. In the event COWS retains an attorney to pursue collection of any account, Customer agrees to pay all collection costs and attorney's fees incurred by COWS.

Any applicable federal, state or local sales, use occupation, consumer's or emergency taxes shall be added to the quoted price. All process license fees required to be paid to others will be added to the scheduled prices.

All COWS' prices are subject to change without notice.

## SERVICE CONDITIONS

Customer warrants that the well is in proper condition to receive the services, equipment, products and materials to be supplied by COWS. The Customer shall at all time have complete care, custody, and control of the well, the drilling and production equipment at the well, and the premises about the well. A responsible representative of the Customer shall be present to specify depths, pressures, or materials used for any service which is to be performed.

(a) COWS shall not be responsible for any claim, cause of action or demand (hereinafter referred to as a 'claim') for damage to property, or injury to or death of employees and representatives, of Customer or the well owner (if different from Customer), unless such damage, injury or death is caused by the willful misconduct or gross negligence of COWS, including but not limited to sub-surface damage and surface damage arising from sub-surface damage.

(b) Unless a claim is the result of the sole willful misconduct or gross negligence of COWS, Customer shall be responsible for and indemnify and hold COWS harmless from any claim for: (1) reservoir loss or damage, or property damage resulting from sub-surface pressure, losing control of the well and/or a well blowout; (2) damages as a result of a subsurface trespass, or an action in the nature thereof, arising from a service operation performed by COWS; (3) injury to or death of persons, other than employees of COWS, or damage to property (including, but not limited to, injury to the well); or any damages whatsoever, irrespective of cause, growing out of or in any way connected with the use of radioactive material in the well hole; and (4) well damage or reservoir damage caused by (i) loss of circulation, cement invasion, cement misplacement, pumping cement or cement plugs on wells with loss of circulation, including the failure to displace plug to proper depth, (ii) sub-surface pressure and resulting failure to complete pumping of cement or cement plug, including dehydration of cement slurry or flashing, plugged float shoe, annulus bridging or plugging, or (iii) down hole tools being lost or left in the well, or becoming stuck in the well for any reason and by any cause. COWS may furnish down hole tools and may supply supervision for the running and placement of such tools but will not be liable for any damage, loss or result caused by the use of such tools.

Furthermore, Customer will be responsible for the cost to replace such tools if they are lost or left in the well.

(c) COWS makes no guarantee of the effectiveness of any COWS' products, supplies or materials, or the results of any COWS' treatment or services.

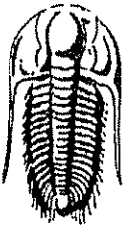
(d) Because of the uncertainty of variable well conditions and the necessity of relying on facts and supporting services furnished by others, COWS is unable to guarantee the accuracy of any chart interpretation, research analysis, job recommendation or other data furnished by COWS. COWS' personnel will use their best efforts in gathering such information and their best judgement in interpreting it, but Customer agrees that COWS shall not be responsible for any damage arising from the use of such information except where due to COWS' gross negligence or willful misconduct in the preparation or furnishing of it.

(e) COWS may buy and re-sell to Customer down hole equipment, including but not limited to float equipment, DV tools, port collars, type A & B packers, and Customer agrees that COWS is not an agent or dealer for the companies who manufacture such items, and further agrees that Customer shall be solely responsible for and indemnify COWS against any claim with regard to the effectiveness, malfunction of, or functionality of such items.

## WARRANTIES - LIMITATION OF LIABILITY

COWS warrants title to the products, supplies and materials, and that the same are free from defects in workmanship and materials. THERE ARE NO OTHER WARRANTIES, EXPRESS OR IMPLIED, NOR ANY WARRANTY OF MERCHANTABILITY OR FITNESS FOR PURPOSE. WHICH EXTEND BEYOND THOSE STATED IN THE IMMEDIATELY PRECEDING SENTENCE. COWS's liability and Customer's exclusive remedy in any claim (whether in contract, tort, breach of warranty or otherwise,) arising out of the sale or use of any COWS' products, supplies, materials or services is expressly limited to the replacement of such products, supplies, materials or services or their return to COWS or, at COWS' option, an allowance to Customer of credit for the cost of such items.

Customer waives and releases all claims against COWS for any special, incidental, indirect, consequential or punitive damages.



**TRILOBITE  
TESTING, INC.**

## DRILL STEM TEST REPORT

Lario Oil & Gas Company  
301 S Market St.  
Wichita, Ks 67202  
ATTN: Bob Bayer

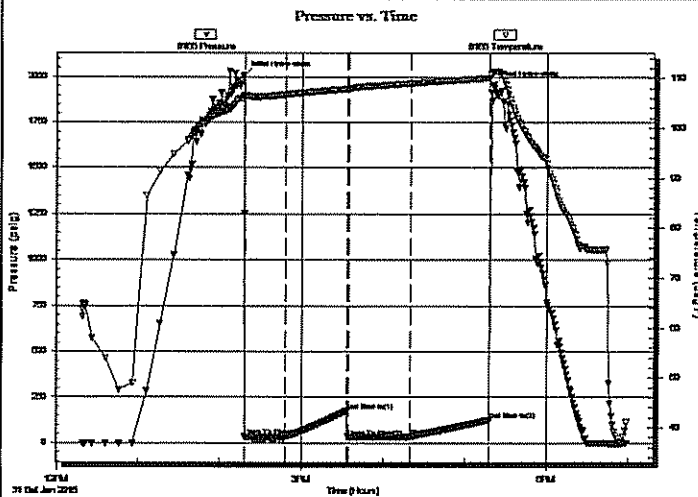
31-13s-31w Gove, Ks  
**Knapp 9-31**  
Job Ticket: 59694      **DST#: 1**  
Test Start: 2015.01.31 @ 12:18:58

### GENERAL INFORMATION:

Formation: **LKC H**  
Deviated: **No Whipstock:**      ft (KB)  
Time Tool Opened: 14:18:28  
Time Test Ended: 18:58:58  
Interval: **4106.00 ft (KB) To 4141.00 ft (KB) (TVD)**  
Total Depth: **4141.00 ft (KB) (TVD)**  
Hole Diameter: **7.88 inches** Hole Condition: **Good**  
Test Type: **Conventional Bottom Hole (Initial)**  
Tester: **Brandon Turley**  
Unit No: **79**  
Reference Elevations: **2936.00 ft (KB)**  
**2926.00 ft (CF)**  
KB to GR/CF: **10.00 ft**

**Serial #: 8166**      **Outside**  
Press@RunDepth: **34.86 psig @ 4107.00 ft (KB)**  
Start Date: **2015.01.31**      End Date: **2015.01.31**  
Start Time: **12:19:03**      End Time: **18:58:57**  
Capacity: **8000.00 psig**  
Last Calib.: **2015.01.31**  
Time On Btm: **2015.01.31 @ 14:17:28**  
Time Off Btm: **2015.01.31 @ 17:20:28**

**TEST COMMENT:** IF: 1 1/4 blow died in 23 min.  
IS: No return.  
FF: Surface blow built to 1 in 45 mins.  
FS: No return.



### PRESSURE SUMMARY

Time (Min.)	Pressure (psig)	Temp (deg F)	Annotation
0	2008.98	106.50	Initial Hydro-static
1	34.45	106.61	Open To Flow (1)
31	34.15	106.75	Shut-In(1)
76	176.14	107.87	End Shut-In(1)
77	33.84	107.94	Open To Flow (2)
122	34.86	108.99	Shut-In(2)
180	125.56	110.07	End Shut-In(2)
183	1953.86	111.41	Final Hydro-static

### Recovery

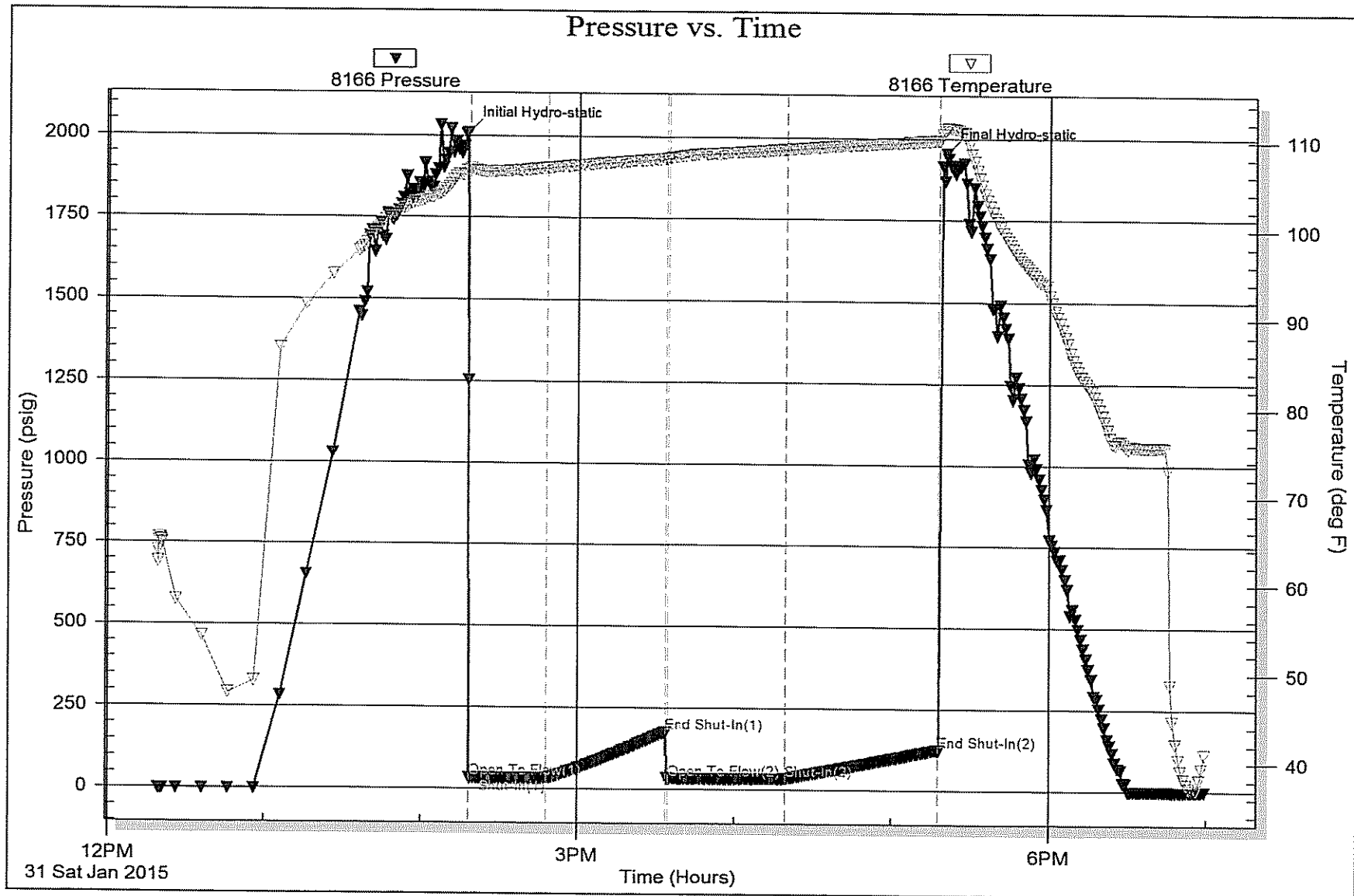
Length (ft)	Description	Volume (bbl)
50.00	ocm 2% @ 98% m	0.70

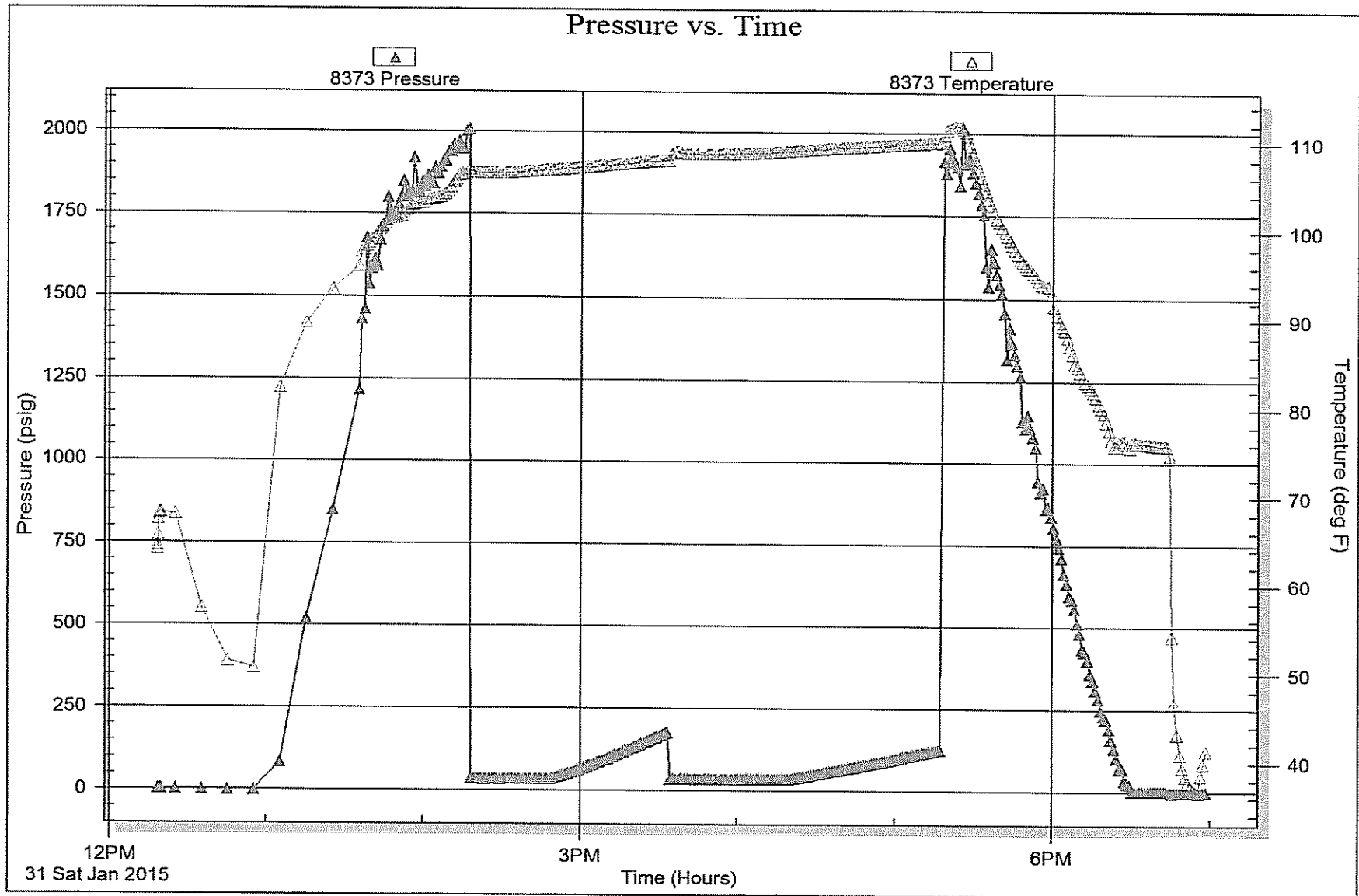
### Gas Rates

	Choke (inches)	Pressure (psig)	Gas Rate (Mcf/d)











**TRILOBITE TESTING, INC.**

## DRILL STEM TEST REPORT

Lario Oil & Gas Company  
 301 S Market St.  
 Wichita, Ks 67202  
 ATTN: Bob Bayer

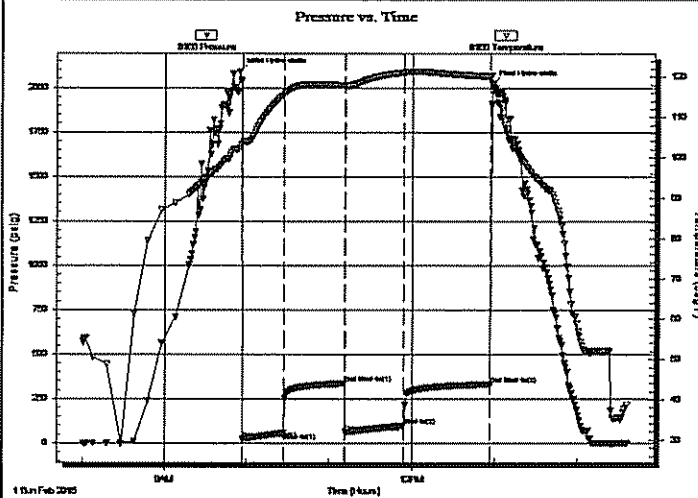
**31-13s-31w Gove, Ks**  
**Knapp 9-31**  
 Job Ticket: 59695      DST#: 2  
 Test Start: 2015.02.01 @ 08:00:49

### GENERAL INFORMATION:

Formation: LKC J  
 Deviated: No      Whipstock:      ft (KB)  
 Time Tool Opened: 09:56:49  
 Time Test Ended: 14:36:49  
 Interval: 4175.00 ft (KB) To 4195.00 ft (KB) (TVD)  
 Total Depth: 4195.00 ft (KB) (TVD)  
 Hole Diameter: 7.88 inches      Hole Condition: Good  
 Test Type: Conventional Bottom Hole (Reset)  
 Tester: Brandon Turley  
 Unit No: 79  
 Reference Elevations: 2936.00 ft (KB)  
 2926.00 ft (CF)  
 KB to GR/CF: 10.00 ft

**Serial #: 8166      Outside**  
 Press@RunDepth: 98.01 psig @ 4176.00 ft (KB)      Capacity: 8000.00 psig  
 Start Date: 2015.02.01      End Date: 2015.02.01      Last Calib.: 2015.02.01  
 Start Time: 08:00:54      End Time: 14:36:48      Time On Btm: 2015.02.01 @ 09:54:49  
 Time Off Btm: 2015.02.01 @ 12:58:19

**TEST COMMENT:** IF: 1/4 blow built to 5 1/2 in 30 min.  
 IS: No return.  
 FF: Surface blow built to 4 in 45 min.  
 FS: No return.



### PRESSURE SUMMARY

Time (Min.)	Pressure (psig)	Temp (deg F)	Annotation
0	2091.10	102.42	Initial Hydro-static
2	21.76	103.30	Open To Flow (1)
32	56.87	115.63	Shut-In(1)
76	335.92	117.91	End Shut-In(1)
77	61.63	117.79	Open To Flow (2)
119	98.01	121.12	Shut-In(2)
182	330.97	120.15	End Shut-In(2)
184	2020.48	118.32	Final Hydro-static

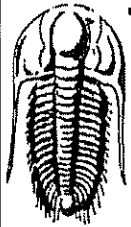
### Recovery

Length (ft)	Description	Volume (bbl)
62.00	mcw 80%w 20%m	0.87
124.00	w cm 20%w 80%m	1.74

\* Recovery from multiple tests

### Gas Rates

	Choke (Inches)	Pressure (psig)	Gas Rate (Mcf/d)



**TRILOBITE  
TESTING, INC.**

## DRILL STEM TEST REPORT

**FLUID SUMMARY**

Lario Oil & Gas Company

31-13s-31w Gove, Ks

301 S Market St.  
Wichita, Ks 67202

**Knapp 9-31**

Job Ticket: 59695

DST#: 2

ATTN: Bob Bayer

Test Start: 2015.02.01 @ 08:00:49

### Mud and Cushion Information

Mud Type: Gel Chem

Cushion Type:

Oil API:

0 deg API

Mud Weight: 9.00 lb/gal

Cushion Length:

ft

Water Salinity:

63000 ppm

Viscosity: 52.00 sec/qt

Cushion Volume:

bbl

Water Loss: 7.99 in<sup>3</sup>

Gas Cushion Type:

Resistivity: 0.00 ohm.m

Gas Cushion Pressure:

psig

Salinity: 2000.00 ppm

Filter Cake: 1.00 inches

### Recovery Information

Recovery Table

Length ft	Description	Volume bbl
62.00	mcw 80%w 20%m	0.870
124.00	w cm 20%w 80%m	1.739

Total Length: 186.00 ft

Total Volume: 2.609 bbl

Num Fluid Samples: 0

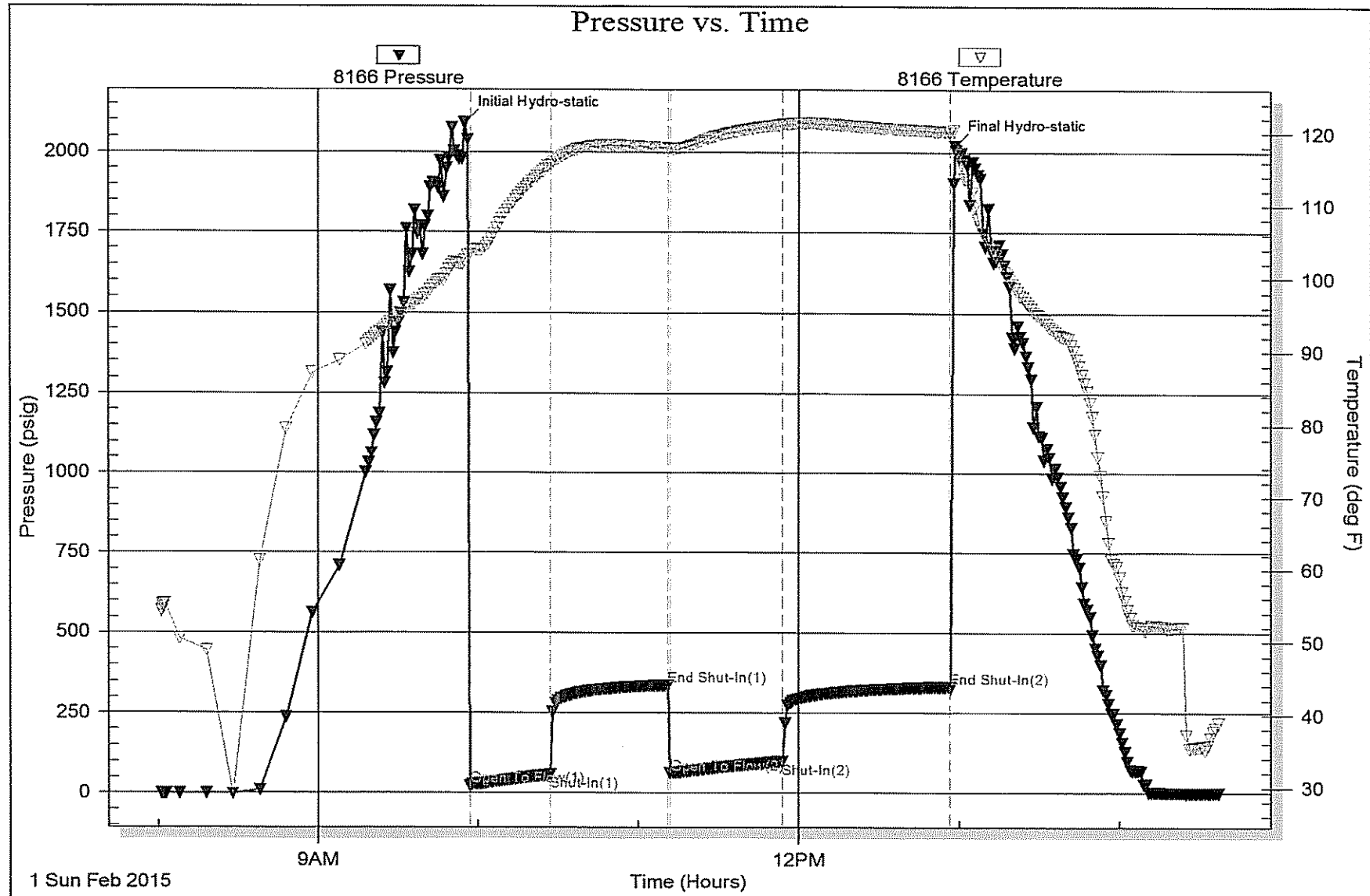
Num Gas Bombs: 0

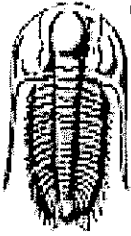
Serial #:

Laboratory Name:

Laboratory Location:

Recovery Comments: .20@43=63000





**TRILOBITE TESTING, INC.**

# DRILL STEM TEST REPORT

Lario Oil & Gas Company

31-13s-31w Gove, Ks

301 S Market St.  
Wichita, Ks 67202

Knapp 9-31

Job Ticket: 59696

DST#: 3

ATTN: Bob Bayer

Test Start: 2015.02.02 @ 04:24:11

## GENERAL INFORMATION:

Formation: LKC L

Deviated: No Whipstock: ft (KB)

Time Tool Opened: 06:50:11

Time Test Ended: 11:50:11

Test Type: Conventional Bottom Hole (Reset)

Tester: Brandon Turley

Unit No: 79

Interval: 4233.00 ft (KB) To 4268.00 ft (KB) (TVD)

Total Depth: 4268.00 ft (KB) (TVD)

Hole Diameter: 7.88 inches Hole Condition: Good

Reference Elevations: 2936.00 ft (KB)

2926.00 ft (CF)

KB to GR/CF: 10.00 ft

Serial #: 8166

Outside

Press@RunDepth: 70.02 psig @ 4234.00 ft (KB)

Start Date: 2015.02.02

End Date:

2015.02.02

Start Time: 04:24:16

End Time:

11:50:10

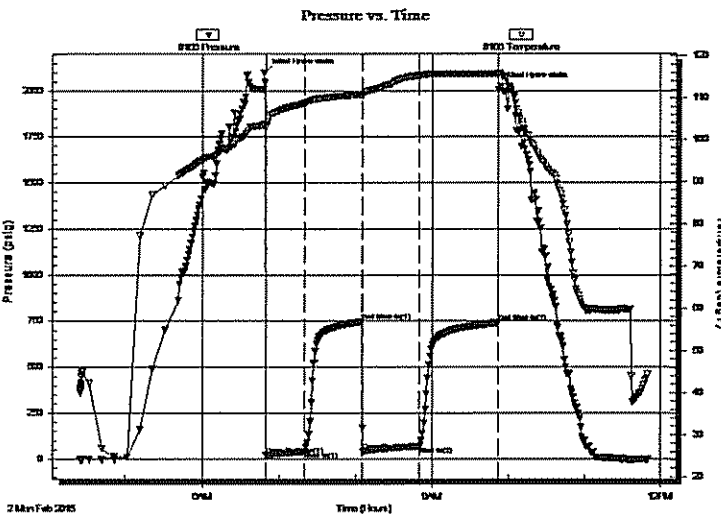
Capacity: 8000.00 psig

Last Calib.: 2015.02.02

Time On Btm: 2015.02.02 @ 06:48:41

Time Off Btm: 2015.02.02 @ 09:53:11

TEST COMMENT: IF: BOB in 28 min.  
IS: No return.  
FF: BOB in 20 min.  
FS: Surface blow built to 1/4 died in 30 min.



## PRESSURE SUMMARY

Time (Min.)	Pressure (psig)	Temp (deg F)	Annotation
0	2099.98	103.71	Initial Hydro-static
2	20.18	103.21	Open To Flow (1)
31	42.29	108.80	Shut-In(1)
76	746.27	110.84	End Shut-In(1)
77	45.57	110.68	Open To Flow (2)
121	70.02	115.39	Shut-In(2)
183	740.49	115.79	End Shut-In(2)
185	2025.26	115.75	Final Hydro-static

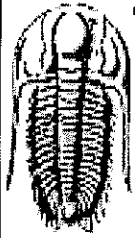
## Recovery

Length (ft)	Description	Volume (bbl)
62.00	gocm 10%g 10%o 80%m	0.87
31.00	gocm 10%g 40%o 50%m	0.43
41.00	go 10%g 90%o	0.58
0.00	176 GIP	0.00

## Gas Rates

	Choke (inches)	Pressure (psig)	Gas Rate (Mcf/d)

\* Recovery from multiple tests



**TRILOBITE  
TESTING, INC.**

# DRILL STEM TEST REPORT

**FLUID SUMMARY**

Lario Oil & Gas Company

31-13s-31w Gove, Ks

301 S Market St.  
Wichita, Ks 67202

**Knapp 9-31**

Job Ticket: 59696

DST#: 3

ATTN: Bob Bayer

Test Start: 2015.02.02 @ 04:24:11

## Mud and Cushion Information

Mud Type: Gel Chem	Cushion Type:	Oil API: 31 deg API
Mud Weight: 9.00 lb/gal	Cushion Length: ft	Water Salinity: 0 ppm
Viscosity: 51.00 sec/qt	Cushion Volume: bbl	
Water Loss: 7.20 in <sup>3</sup>	Gas Cushion Type:	
Resistivity: 0.00 ohm.m	Gas Cushion Pressure: psig	
Salinity: 2600.00 ppm		
Filter Cake: 1.00 inches		

## Recovery Information

Recovery Table

Length ft	Description	Volume bbl
62.00	gocm 10%g 10%o 80%m	0.870
31.00	gocm 10%g 40%o 50%m	0.435
41.00	go 10%g 90%o	0.575
0.00	176 GIP	0.000

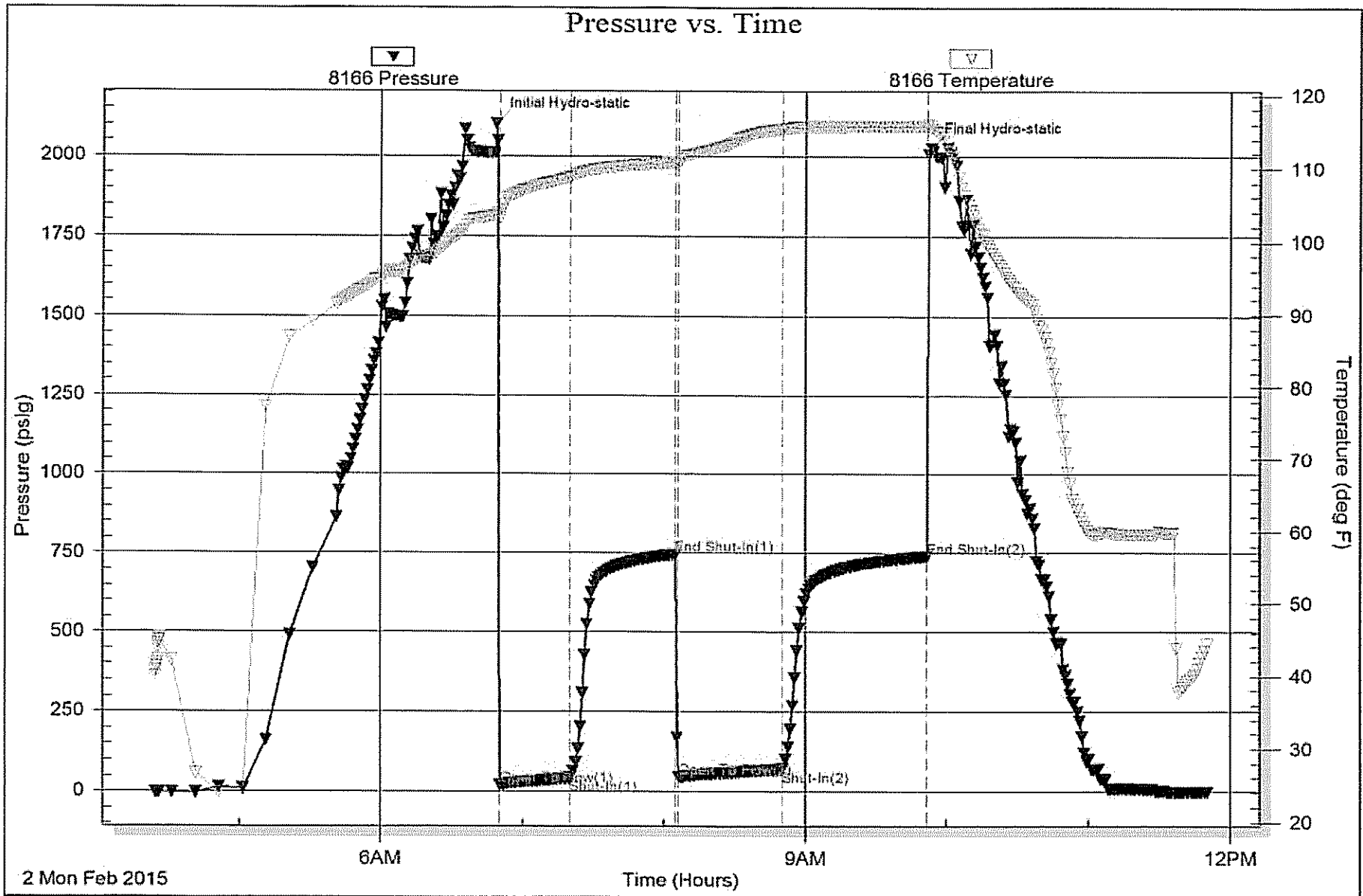
Total Length: 134.00 ft      Total Volume: 1.880 bbl

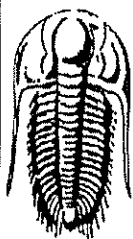
Num Fluid Samples: 0      Num Gas Bombs: 0      Serial #:

Laboratory Name:      Laboratory Location:

Recovery Comments: 29@41=31







**TRILOBITE  
TESTING, INC.**

# DRILL STEM TEST REPORT

Lario Oil & Gas Company

31-13s-31w Gove, Ks

301 S Market St.  
Wichita, Ks 67202

Knapp 9-31

Job Ticket: 59697

DST#: 4

ATTN: Bob Bayer

Test Start: 2015.02.03 @ 23:58:08

## GENERAL INFORMATION:

Formation: **Johnson**

Deviated: No Whipstock: ft (KB)

Time Tool Opened: 01:54:38

Time Test Ended: 06:55:38

Test Type: Conventional Bottom Hole (Reset)

Tester: Brandon Turley

Unit No: 79

Interval: 4510.00 ft (KB) To 4545.00 ft (KB) (TVD)

Total Depth: 4545.00 ft (KB) (TVD)

Hole Diameter: 7.88 inches Hole Condition: Good

Reference Elevations: 2936.00 ft (KB)

2926.00 ft (CF)

KB to GR/CF: 10.00 ft

Serial #: 8166

Outside

Press@RunDepth: 157.40 psig @ 4511.00 ft (KB)

Start Date: 2015.02.03

End Date:

2015.02.04

Start Time: 23:58:13

End Time:

06:55:37

Capacity: 8000.00 psig

Last Calib.: 2015.02.04

Time On Btm: 2015.02.04 @ 01:52:38

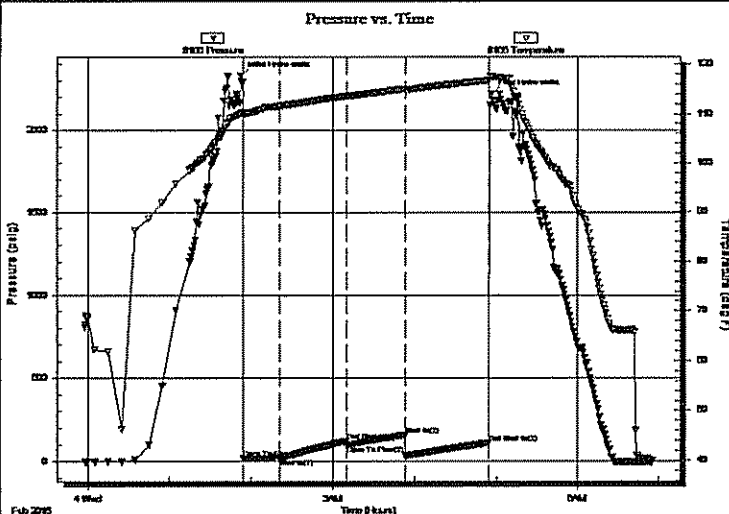
Time Off Btm: 2015.02.04 @ 04:56:08

TEST COMMENT: IF: Surface blow died in 7 mins.

IS: No return.

FF: No blow.

FS: No return.



## PRESSURE SUMMARY

Time (Min.)	Pressure (psig)	Temp (deg F)	Annotation
0	2328.86	110.06	Initial Hydro-static
2	16.96	109.84	Open To Flow (1)
28	21.11	111.52	Shut-In(1)
78	121.90	113.53	End Shut-In(1)
78	96.03	113.55	Open To Flow (2)
120	157.40	114.98	Shut-In(2)
182	111.30	116.69	End Shut-In(2)
184	2219.59	117.62	Final Hydro-static

## Recovery

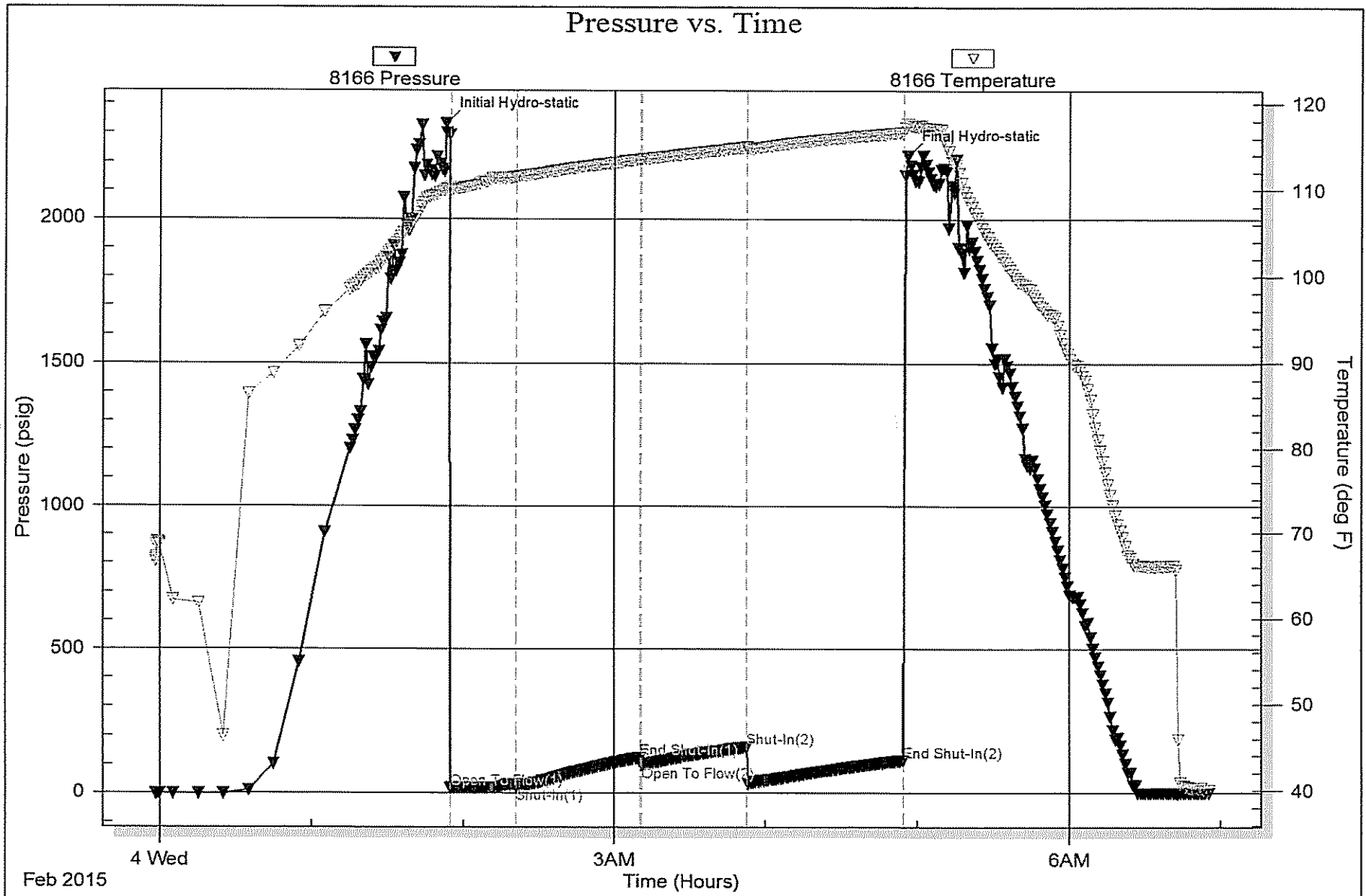
Length (ft)	Description	Volume (bbt)
5.00	mud 100% m	0.07

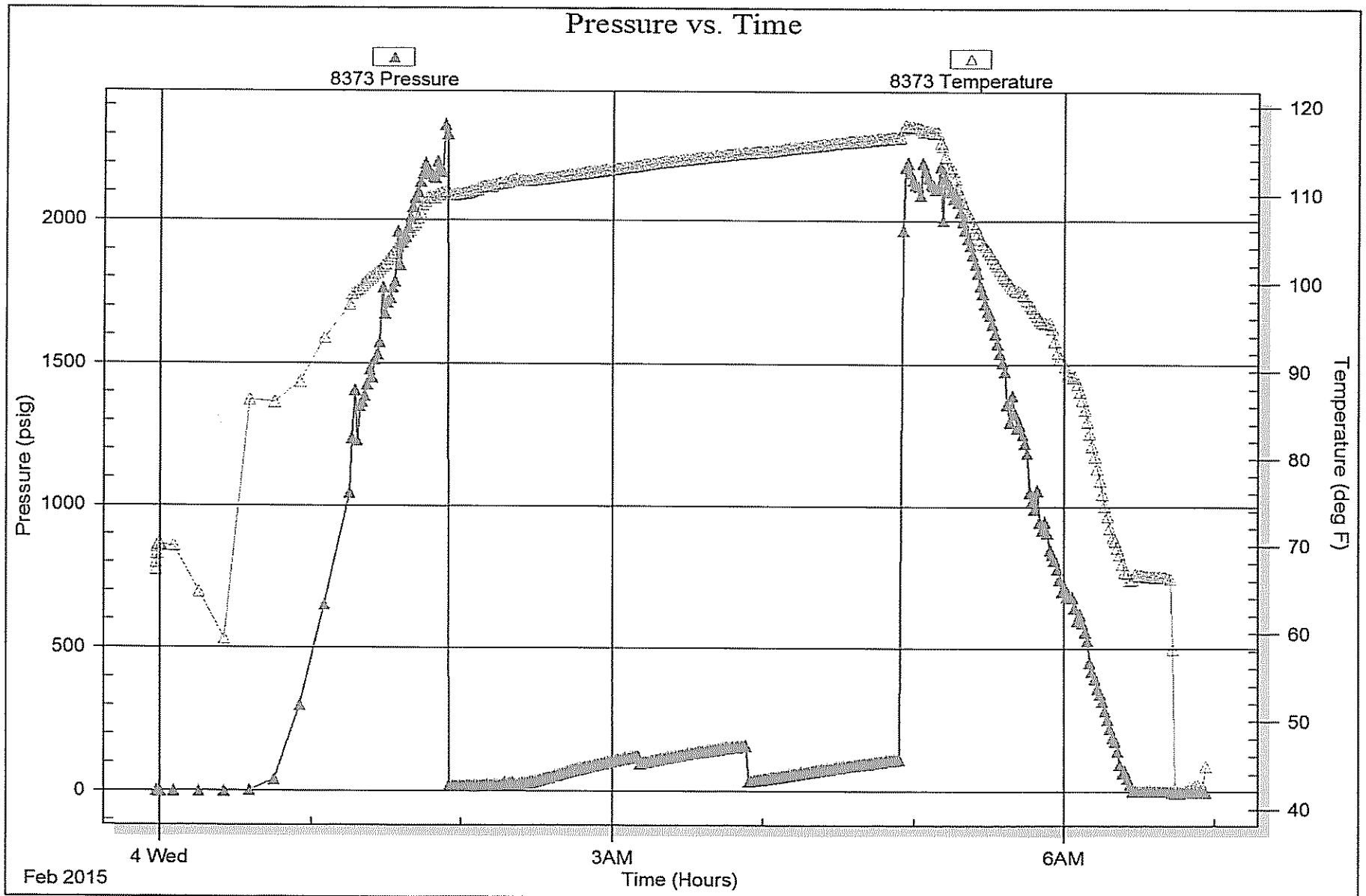
\* Recovery from multiple tests

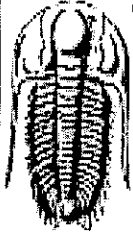
## Gas Rates

	Choke (inches)	Pressure (psig)	Gas Rate (Mcf/d)









**TRILOBITE TESTING, INC.**

# DRILL STEM TEST REPORT

Lario Oil & Gas Company

31-13s-31w Gove, Ks

301 S Market St.  
Wichita, Ks 67202

**Knapp 9-31**

Job Ticket: 59698

DST#: 5

ATTN: Bob Bayer

Test Start: 2015.02.04 @ 18:17:24

## GENERAL INFORMATION:

Formation: **Morrow Sand**

Deviated: No Whipstock: ft (KB)

Time Tool Opened: 20:20:24

Time Test Ended: 02:20:24

Test Type: Conventional Bottom Hole (Reset)

Tester: Brandon Turley

Unit No: 79

Interval: 4540.00 ft (KB) To 4575.00 ft (KB) (TVD)

Total Depth: 4575.00 ft (KB) (TVD)

Hole Diameter: 7.88 inches Hole Condition: Good

Reference Elevations: 2936.00 ft (KB)

2926.00 ft (CF)

KB to GR/CF: 10.00 ft

Serial #: 8166

Outside

Press@RunDepth: 242.61 psig @ 4541.00 ft (KB)

Start Date: 2015.02.04

End Date:

2015.02.05

Start Time: 18:17:29

End Time:

02:20:23

Capacity: 8000.00 psig

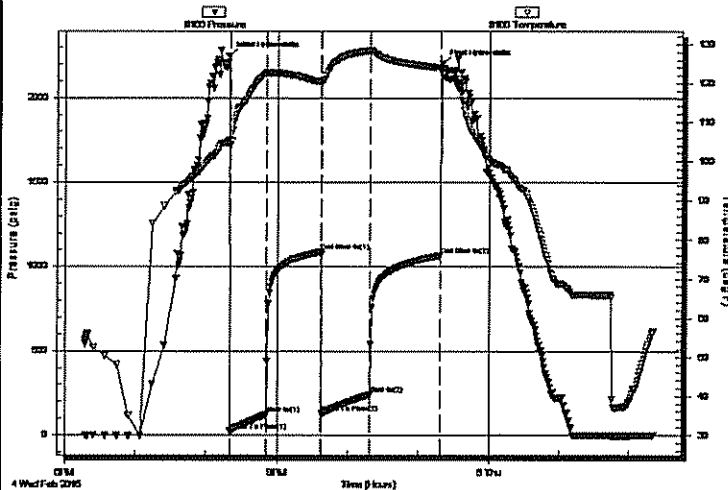
Last Calib.: 2015.02.05

Time On Btm: 2015.02.04 @ 20:18:54

Time Off Btm: 2015.02.04 @ 23:20:24

TEST COMMENT: IF: BOB in 15 min.  
IS: No return.  
FF: BOB in 19 min.  
FS: No return.

Pressure vs. Time



## PRESSURE SUMMARY

Time (Min.)	Pressure (psig)	Temp (deg F)	Annotation
0	2248.17	105.13	Initial Hydro-static
2	23.77	104.03	Open To Flow (1)
32	122.30	122.69	Shut-In(1)
78	1089.30	120.46	End Shut-In(1)
79	129.04	120.10	Open To Flow (2)
120	242.61	128.35	Shut-In(2)
180	1066.14	123.98	End Shut-In(2)
182	2202.30	122.20	Final Hydro-static

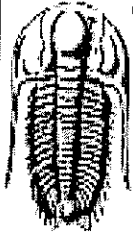
## Recovery

Length (ft)	Description	Volume (bbl)
124.00	mcw 90%w 10%m	1.74
125.00	mcw 70%w 30%m	1.75
186.00	w cm 40%w 60%m	2.61

## Gas Rates

	Choke (inches)	Pressure (psig)	Gas Rate (Mcf/d)

\* Recovery from multiple tests



**TRILOBITE  
TESTING, INC.**

# DRILL STEM TEST REPORT

FLUID SUMMARY

Lario Oil & Gas Company

31-13s-31w Gove, Ks

301 S Market St.  
Wichita, Ks 67202

Knapp 9-31

Job Ticket: 59698

DST#: 5

ATTN: Bob Bayer

Test Start: 2015.02.04 @ 18:17:24

## Mud and Cushion Information

Mud Type: Gel Chem

Cushion Type:

Oil API:

0 deg API

Mud Weight: 9.00 lb/gal

Cushion Length:

ft

Water Salinity:

380000 ppm

Viscosity: 53.00 sec/qt

Cushion Volume:

bbf

Water Loss: 8.79 in<sup>3</sup>

Gas Cushion Type:

Resistivity: 0.00 ohm.m

Gas Cushion Pressure:

psig

Salinity: 3200.00 ppm

Filter Cake: 2.00 inches

## Recovery Information

Recovery Table

Length ft	Description	Volume bbf
124.00	mcw 90%w 10%m	1.739
125.00	mcw 70%w 30%m	1.753
186.00	w cm 40%w 60%m	2.609

Total Length: 435.00 ft

Total Volume: 6.101 bbl

Num Fluid Samples: 0

Num Gas Bombs: 0

Serial #:

Laboratory Name:

Laboratory Location:

Recovery Comments: .22@61=38000

