



1243540

Operator Name: _____ Lease Name: _____ Well #: _____

Sec. _____ Twp. _____ S. R. _____ East West County: _____

INSTRUCTIONS: Show important tops of formations penetrated. Detail all cores. Report all final copies of drill stems tests giving interval tested, time tool open and closed, flowing and shut-in pressures, whether shut-in pressure reached static level, hydrostatic pressures, bottom hole temperature, fluid recovery, and flow rates if gas to surface test, along with final chart(s). Attach extra sheet if more space is needed.

Final Radioactivity Log, Final Logs run to obtain Geophysical Data and Final Electric Logs must be emailed to kcc-well-logs@kcc.ks.gov. Digital electronic log files must be submitted in LAS version 2.0 or newer AND an image file (TIFF or PDF).

Drill Stem Tests Taken <input type="checkbox"/> Yes <input type="checkbox"/> No <i>(Attach Additional Sheets)</i> Samples Sent to Geological Survey <input type="checkbox"/> Yes <input type="checkbox"/> No Cores Taken <input type="checkbox"/> Yes <input type="checkbox"/> No Electric Log Run <input type="checkbox"/> Yes <input type="checkbox"/> No List All E. Logs Run: _____	<input type="checkbox"/> Log Formation (Top), Depth and Datum <input type="checkbox"/> Sample Name Top Datum
--	---

CASING RECORD <input type="checkbox"/> New <input type="checkbox"/> Used							
Report all strings set-conductor, surface, intermediate, production, etc.							
Purpose of String	Size Hole Drilled	Size Casing Set (In O.D.)	Weight Lbs. / Ft.	Setting Depth	Type of Cement	# Sacks Used	Type and Percent Additives

ADDITIONAL CEMENTING / SQUEEZE RECORD				
Purpose:	Depth Top Bottom	Type of Cement	# Sacks Used	Type and Percent Additives
<input type="checkbox"/> Perforate <input type="checkbox"/> Protect Casing <input type="checkbox"/> Plug Back TD <input type="checkbox"/> Plug Off Zone				

Did you perform a hydraulic fracturing treatment on this well? Yes No *(If No, skip questions 2 and 3)*

Does the volume of the total base fluid of the hydraulic fracturing treatment exceed 350,000 gallons? Yes No *(If No, skip question 3)*

Was the hydraulic fracturing treatment information submitted to the chemical disclosure registry? Yes No *(If No, fill out Page Three of the ACO-1)*

Shots Per Foot	PERFORATION RECORD - Bridge Plugs Set/Type Specify Footage of Each Interval Perforated	Acid, Fracture, Shot, Cement Squeeze Record <i>(Amount and Kind of Material Used)</i>	Depth

TUBING RECORD:	Size: _____ Set At: _____ Packer At: _____	Liner Run: <input type="checkbox"/> Yes <input type="checkbox"/> No
----------------	--	---

Date of First, Resumed Production, SWD or ENHR. _____	Producing Method: <input type="checkbox"/> Flowing <input type="checkbox"/> Pumping <input type="checkbox"/> Gas Lift <input type="checkbox"/> Other <i>(Explain)</i> _____
---	--

Estimated Production Per 24 Hours	Oil Bbls.	Gas Mcf	Water Bbls.	Gas-Oil Ratio	Gravity

DISPOSITION OF GAS: <input type="checkbox"/> Vented <input type="checkbox"/> Sold <input type="checkbox"/> Used on Lease <i>(If vented, Submit ACO-18.)</i>	METHOD OF COMPLETION: <input type="checkbox"/> Open Hole <input type="checkbox"/> Perf. <input type="checkbox"/> Dually Comp. <input type="checkbox"/> Commingled <i>(Submit ACO-5)</i> <input type="checkbox"/> Other <i>(Specify)</i> _____	PRODUCTION INTERVAL: _____ _____
--	---	---

LITHOLOGY STRIP LOG

WellSight Systems

Scale 1:240 (5"=100') Imperial

Well Name: Clark #8
Location: 1686' FNL & 1980' FEL, Sec. 2-T31S-R2W, Sumner Co., KS.
Licence Number: 15-191-22767-0000 Region: Moyer NW
Spud Date: 1/9/2015 Drilling Completed: 1/14/2015
Surface Coordinates: 1686' FNL & 1980' FEL, Sec. 2-T31S-R3W

Bottom Hole Same as Above
Coordinates:
Ground Elevation (ft): 1290' K.B. Elevation (ft): 1299'
Logged Interval (ft): 2000' To: 3400' Total Depth (ft): 3400'
Formation: Kansas City at Total Depth
Type of Drilling Fluid: Freshwater/Gel to 2280'; Chemical Gel 2280' to 3400'
Printed by MUD.LOG from WellSight Systems 1-800-447-1534 www.WellSight.com

OPERATOR

Company: Herman L. Loeb, LLC.
Address: P.O. Box 838
Lawrenceville, IL. 62439-0838

GEOLOGIST

Name: Jon D. Christensen
Company: Consulting Petroleum Geologist
Address: 9002 W. Silver Hollow St.
Wichita, KS. 67205-8856

Cores

None Taken

DSTs

DST #1(Kansas City Swope) 3284' - 3324'(Corrected Depths to Log) Test Times 15"-45"-30"-60" IFP Weak Blow built to 1.25", FFP Weak Blow built to 0.75"; no Blowback on SI's; REC: 55' MSW w/oil specks(CI 74,000, Mud 4500); IFP 15-24#, ISIP 959#, FFP 29-39#, FSIP 974#, IHP 1658#, FHP 1628#, BHT 113 Deg. F.

Comments

1/9/15 MIRU Sterling Drilling Co. Rig #4; 1/10/15 Spud at 1:15 AM., TD. 262' - CCH; 1/11/15 Drilling at 951'; 1/12/15 Drilling at 2205'; 1/13/15 Drilling at 3230'; 1/14/15 RTD. 3400' - TOH for Logs(Nabors); 1/15/15 RTD. 3400', LTD. 3398' - Production Casing set.

Set new 8 5/8"(24#) Surface Casing at 259' KB. with 250 sacks cement(Basic Energy Services). Cement did Circulate. PD. at 10:45 AM. on 1/10/15.

Set new 5 1/2"(15.5#) Production Casing at 3396' with 250 sx. of "Loeb Blend" cement(Basic Energy Services). PD. at 1:30 AM. 1/15/15.

Surveys: 1.50 Deg. at 262'(Surface Casing); 0.50 Deg. at 3325'(DST #1).

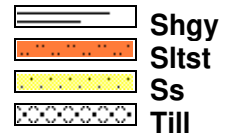
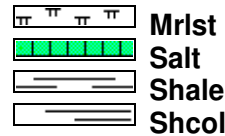
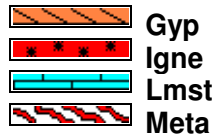
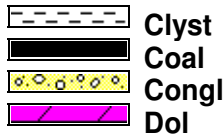
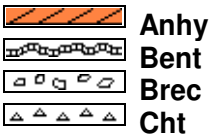
Pipe Strap at 3325'(DST #1): Strap 0.77' Long to the Board, no Correction made to the Board.

After review of the Nabors Logs and DST data, the operator elected to set new 5 1/2" Production Casing for completion in the Kansas City Swope zone.

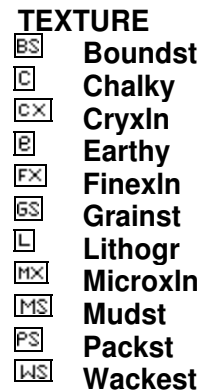
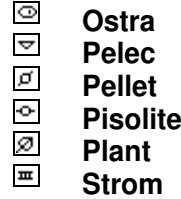
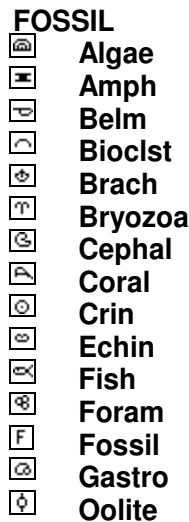
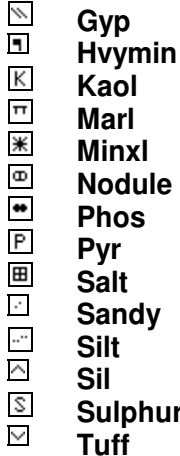
NOTE: This log was shifted upward by 1' to 3' for correlation purposes with the Nabors openhole Logs.

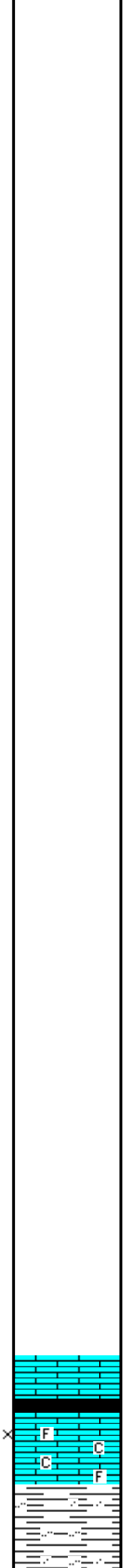
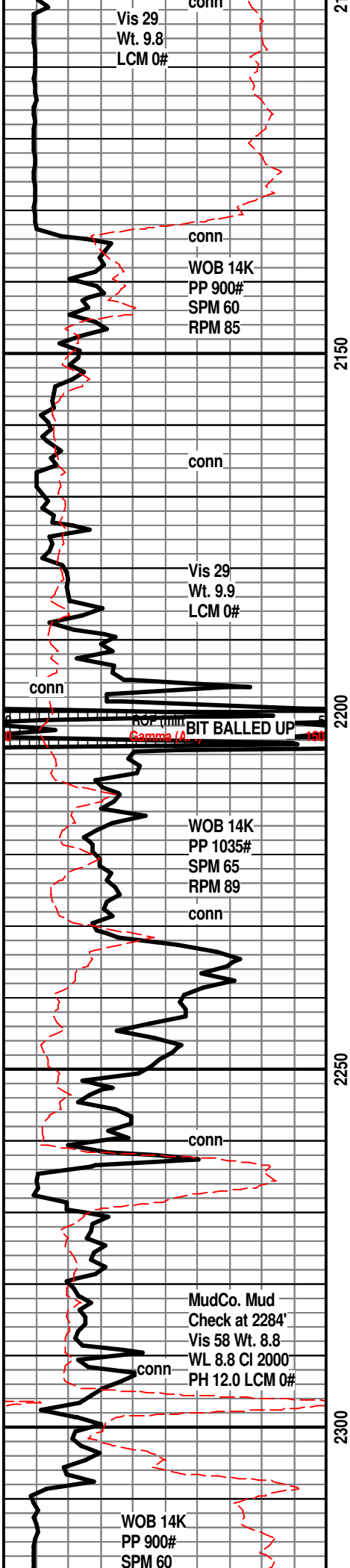
LOG TOPS: Topeka 2006(-707), Heebner Shale 2538(-1239), Toronto 2554(-1255), Iatan 2849(-1550), Stalnaker Sand 2898(-1599), Kansas City 3161(-1862), Stark Shale 3289(-1990), Swope 3310(-2011), Hertha 3336(-2037).

ROCK TYPES



ACCESSORIES



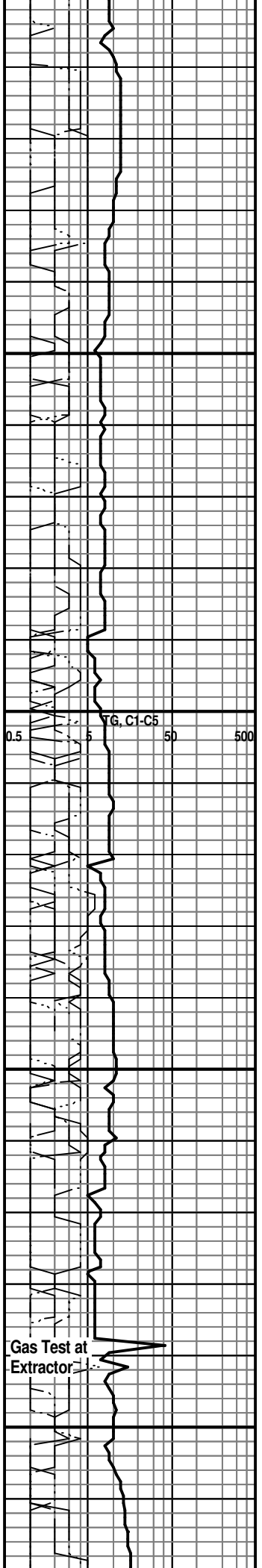


DISPLACE MUD SYSTEM at 2280'

20' Wet and Dry Samples at 2300'

LM; tan to lt brn, off wh, foss ip, scat chalky mtx, occ lt yel fluor, trc poor interpart/interxln por, no stn, ns.

SH; lt to med gy, silty to occ sandy, mica ip, platy



RPM 85-90

conn

2350

conn

Vis 55
Wt. 8.7
LCM 0#

conn

A.V.= 149.60
at 60 SPM

2400

ROP (min/ft)
Gamma (API)

WOB 14-15K
PP 880#
SPM 60
RPM 90

conn

conn

2450

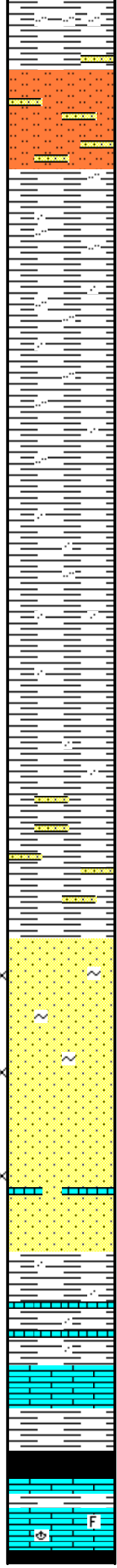
Vis 52
Wt. 8.8
LCM 0#

conn

WOB 14K
PP 925#
SPM 60
RPM 88-90

2500

conn



SLTST; lt to med gy, firm, sandy w/interbdd vf gr mica ss, ns.

SH; lt to med gy, silty to sandy, mica ip, platy

SH; lt to med gy, silty to sandy, soft

SH; lt gy, silty to sandy w/interbdd ss strngs.

SS; lt gy, rare clr, f to occ med gr qtz, fri clusters, trc galu, rarely mica, gd intergran por, subrng - subang gr, no fluor, no stn or odor, ns.

SS; lt gy, most med gr, subang gr, gd intergran por, scat mica, occ lmy frags w/scat carb mat, no fluor, ns.

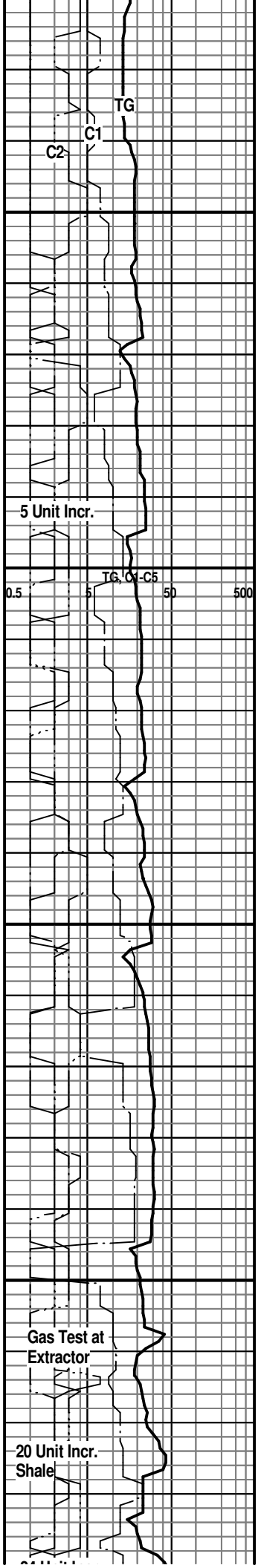
SH; med gy, sandy ip., interbdd hd med brn ss strngs.

LM; med brn, blocky, dense, tite

SH; dk gy - blk, platy, carb ip.

LM; tan to med brn, foss ip, most dense - blocky, no vis por, no fluor, tite

HFFRNER SHAI F 2538(-1239)



HELDREN SHALE 2554(-1255)

SH; blk, carb ip, platy, faint gas odor

LM; med brn, dense, v. hd

SH; med gy, rare gy grn, smooth

TORONTO 2554(-1255)

LM; off wh, buff, lt gy, f to occ med xln, scat chalky mtx, rare poor interxln por, lt yel min fluor, no vis stn, no odor, interbdd dense micrite, ns.

SH; med to dk gy, occ blk, platy, rarely silty

SS; lt gy, wh, f gr qtz, mica ip, fair por, ns.

LM; tan to lt brn, buff, f to med xln, scat fair interxln por, minor soft chalky mtx, dull yel/golden yel fluor, no vis stn, no odor, ns.

SH; med gy, platy, sandy ip.

SS; lt gy, vf to f gr qtz, clusters, some fri w/fair intergran por, no fluor, ns.

SH; lt to med gy, smooth, occ silty to sandy

SH; pred med gy, silty to sandy, occ mica

SH; med gy, platy, occ silty

24 Unit incr.
Shale

Recycle

0.5 5 50 500
TG, C1-C5

2550
2600
2650
2700
2750

conn

A.V. = 149.85
at 60 SPM

conn

Vis 50
Wt. 8.7
LCM 0#

ROP (min/ft)
Gamma (API)

conn

WOB 13-14K
PP 985#
SPM 60
RPM 89

conn

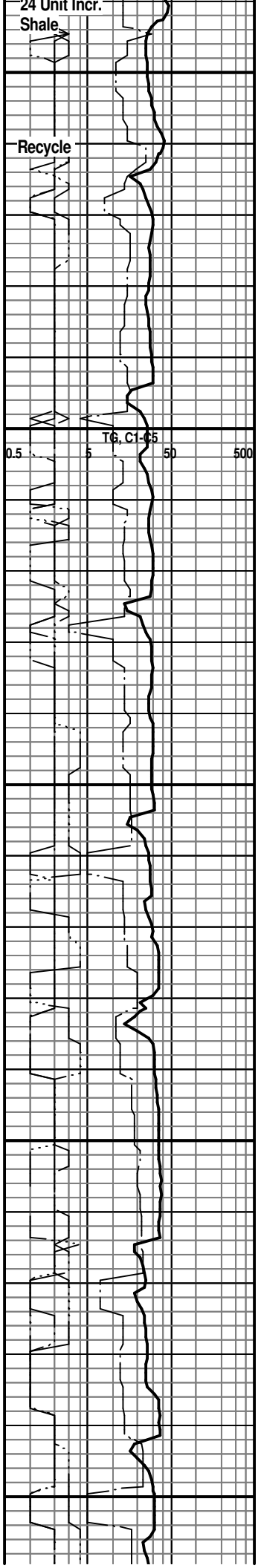
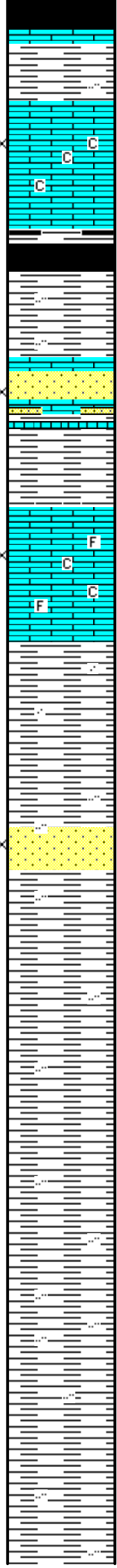
Vis 50
Wt. 8.7
LCM 0#

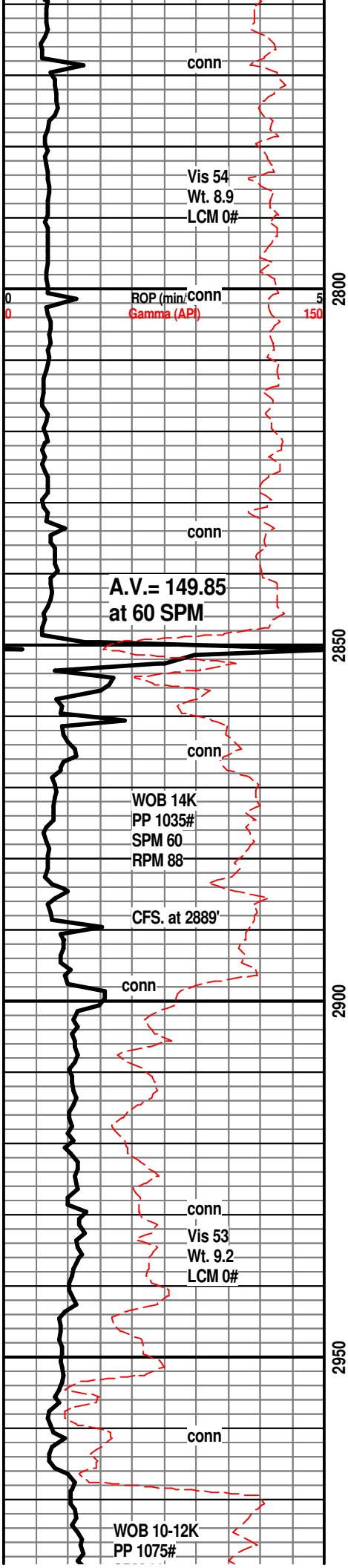
conn

conn

WOB 14-15K
PP 1020#
SPM 60
RPM 90

conn





SH; med gy, rare lt gy, silty ip.

SH; lt to med gy, platy, occ silty to sandy

IATAN 2849(-1550)

LM; med brn, v. hd, rare foss

UPPER STALNAKER SS. 2854(-1555)

SS; lt gy, vf to f gr qtz, poor to fair intergran por, trc dull yel fluor, questionable gas bubbles, no vis stn or odor, trc hd pyr ss

SH; lt to med gy, silty to sandy, interbdd sltst.

SH; lt gy, silty to occ sandy, platy

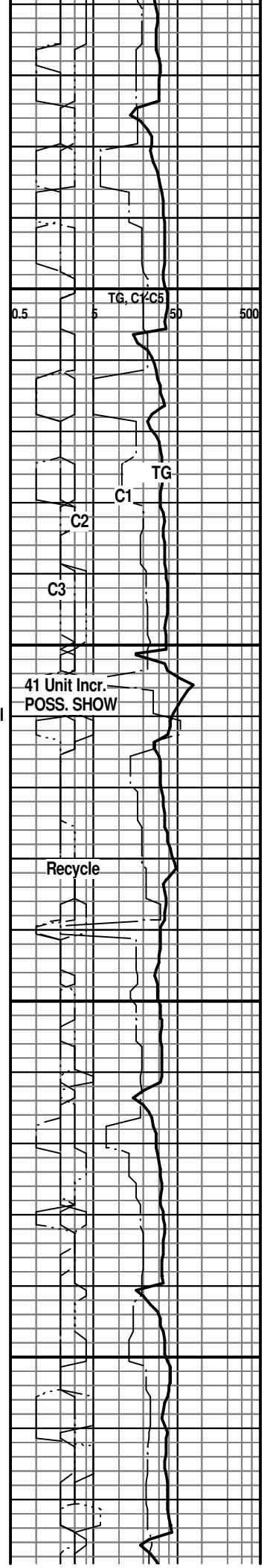
STALNAKER SAND 2898(-1599)

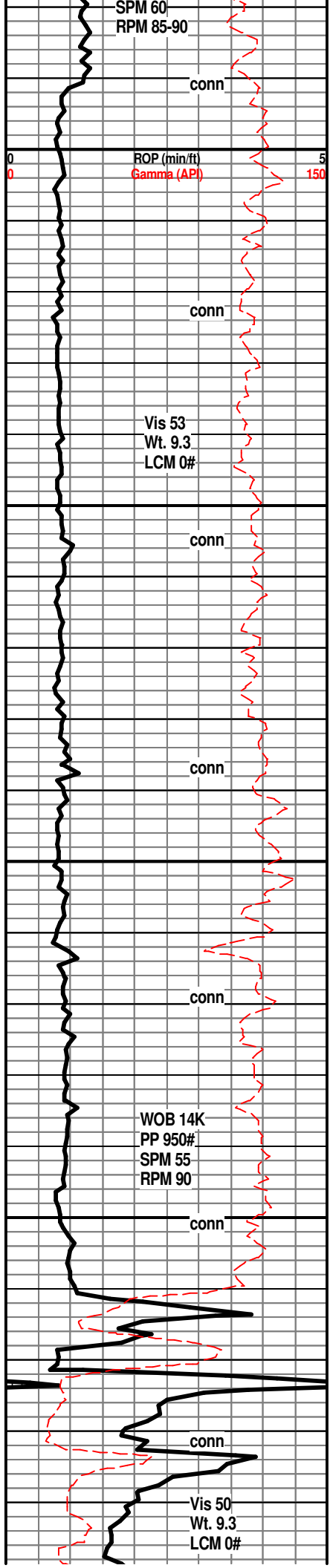
SS; lt gy, occ clr, pred f gr qtz, clusters, some well cem - other fri, fair to gd intergran por, occ mica, subang - subrnd gr, no fluor, no stn or odor, no gas kick

SS; lt gy, occ clr, qtz, f to med gr, subrng - subang, most w/gd intergran por, clusters, no fluor, no stn or odor, trc hd pyr ss, barren, ns.

SS; lt brn, lt gy brn, f - med gr, clusters, gd intergran por, ns.

SLTST; lt gy, mica, interbdd vf gr qtz, tite



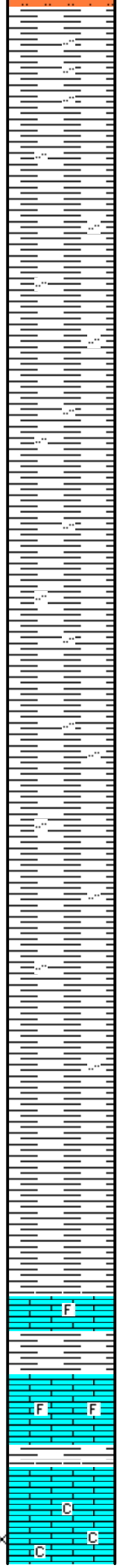


3000

3050

3100

3150



SH; med gy, most smooth, occ silty

SH; med gy, rare lt gy, platy, occ silty

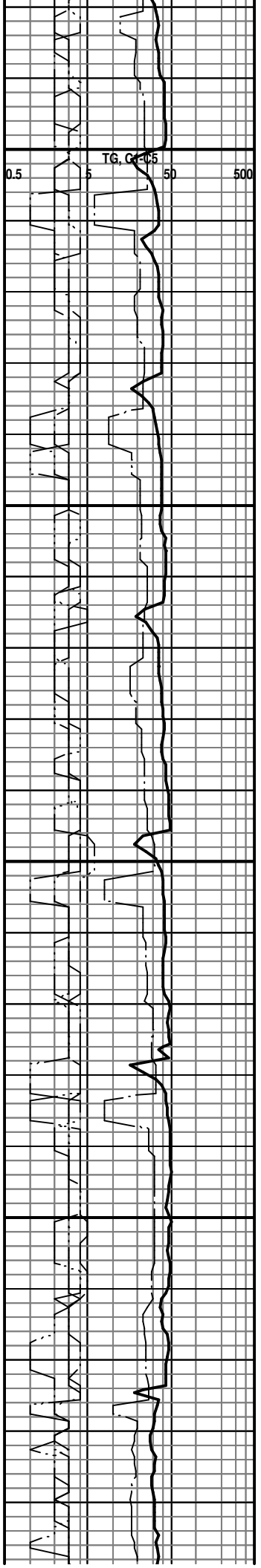
SH; med gy, platy, occ silty

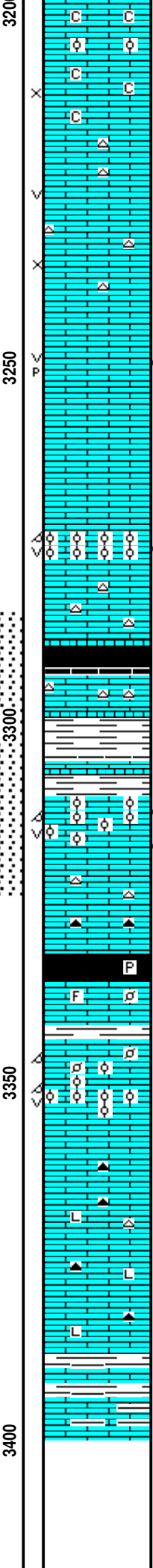
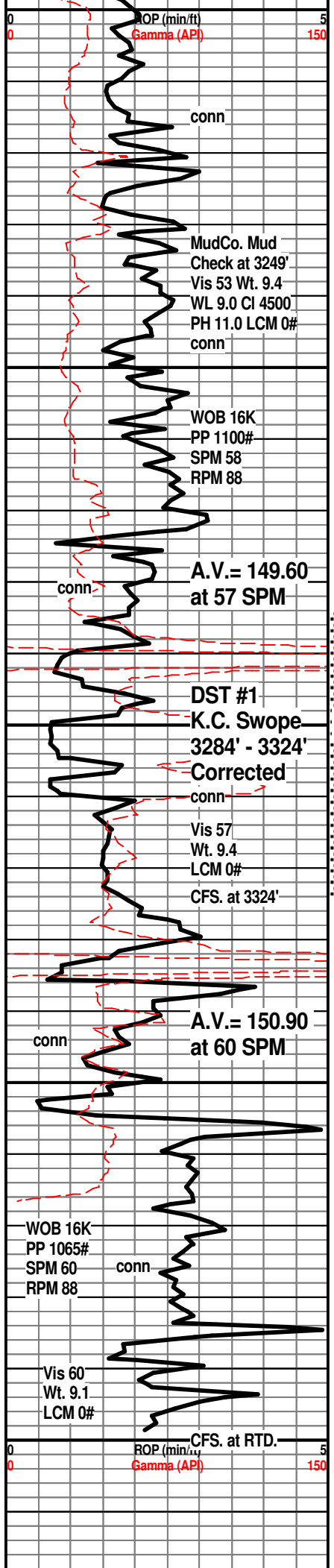
SH; lt to med gy, platy, most smooth

KANSAS CITY 3161(-1862)
LM; med brn, most dense, rare well cem foss mat, no fluor, no vis por, ns.

LM; med to dk brn, foss ip, most hd, blocky, no fluor, no vis por, ns.

LM; off wh, buff, tan, fxln w/interbdd soft chalk and chalky lmst, poor vis interln por, trc oolitic lmst w/lt yel min fluor, no vis stn, no odor, no gas kick





LM; tan to off wh, cream, f to occ med xln, much soft chalky mtx, poor to fair interxln por, dull yel min fluor, no vis stn, no odor, ns.

LM; off wh, lt brn, f to med xln, few pcs w/small vug por, cherty w/lt gy - tan cht, dull to lt yel fluor, no vis stn, possible faint odor, no gas kick

25 Stand Wiper Trip at 3249'

LM; tan to lt brn, fxln, scat fair p-p w/some vug por, fair odor, few pcs w/spotted lt brn oil stn, med yel fluor, no apparent gas kick, fair cut

LM; lt brn, most dense, blocky, rare lt gy cht, no vis por, no fluor, ns.

LM; lt brn, oolitic, gd oomoldic w/scat vug por, honeycomb por, lt brn even oil stn, gd odor, med golden yel fluor, SSFO, fair to gd cut, trc gas bubbles

STARK SHALE 3289(-1990)

SH; blk, carb ip, platy to blocky

LM; lt to med brn, hd, blocky, scat off wh cht, tite

SH; med gy, med gy grn, fiss

SWOPE 3310(-2011)

LM; med brn, oolitic, fair oomoldic w/scat vug por, fair odor, brite yel fluor, trc gas bubbles, SSFO, spotted/even med brn oil stn, fair/gd cut, scat cse spar calc w/edge stn also, bcm cherty

DST #1: K.C. Swope 3284' - 3324'

Corrected Depths to Log

SH; blk, carb, pyr ip.

HERTHA 3336(-2037)

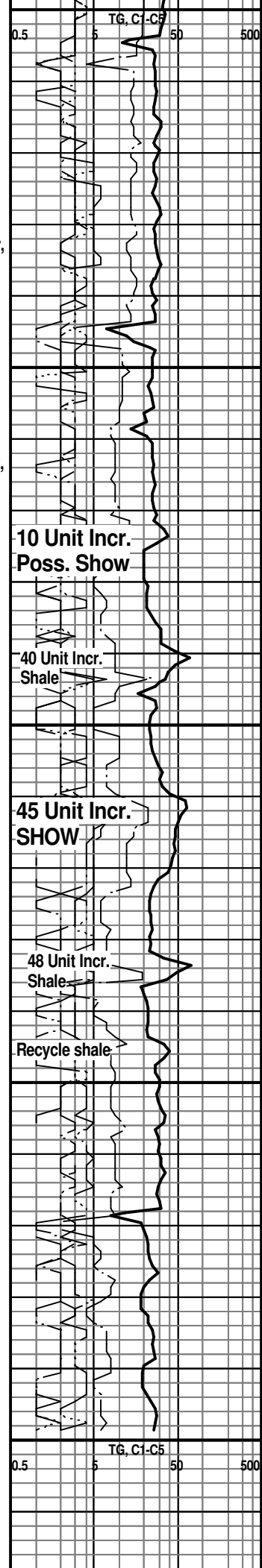
LM; tan to lt brn, buff, foss ip, well cem, tite

LM; lt brn, oolitic, med size molds w/small to med ooids, fair moldic por w/scat vug por, lt/med yel min fluor, no vis stn, no odor, ns.

LM; med to occ dk brn, dense, litho, rare dk gy/brn cht, tite

SH; dk gy, lmy w/interbdd dk gy brn lmst

LM; med/dk brn, argil, tite



RTD. 3400' at 5:15 AM. on 1/14/15

LTD. 3398'

**Nabors Completion & Production,
Services DIL, NEU/DEN w/PE, Microlog**

3450

00



TRILOBITE TESTING, INC

DRILL STEM TEST REPORT

Herman L.Loeb LLC
 P.O.Box 838
 Lawrenceville Il. 62439
 ATTN: Jon Christensen

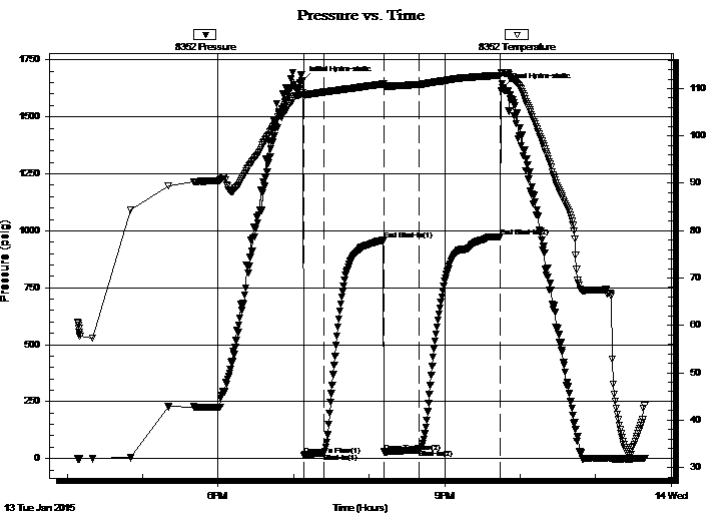
2-31s-3w Sumner Ks.
Clark #8
 Job Ticket: 59735 **DST#: 1**
 Test Start: 2015.01.13 @ 16:08:15

GENERAL INFORMATION:

Formation: **K.C. Swope**
 Deviated: No Whipstock: ft (KB)
 Test Type: Conventional Bottom Hole (Initial)
 Time Tool Opened: 19:08:00 Tester: Gary Pevoteaux
 Time Test Ended: 23:39:30 Unit No: 80
 Interval: **3285.00 ft (KB) To 3325.00 ft (KB) (TVD)** Reference Elevations: 1299.00 ft (KB)
 Total Depth: 3325.00 ft (KB) (TVD) 1290.00 ft (CF)
 Hole Diameter: 7.88 inches Hole Condition: Poor KB to GR/CF: 9.00 ft

Serial #: 8352 Outside
 Press@RunDepth: 39.45 psig @ 3286.00 ft (KB) Capacity: 8000.00 psig
 Start Date: 2015.01.13 End Date: 2015.01.13 Last Calib.: 2015.01.13
 Start Time: 16:08:20 End Time: 23:39:29 Time On Btm: 2015.01.13 @ 19:07:30
 Time Off Btm: 2015.01.13 @ 21:46:15

TEST COMMENT: IF:Weak blow . 12 - 1 1/4".
 IS:No blow .
 FF:Weak blow . 14 - 3/4".
 FS:No blow .



PRESSURE SUMMARY

Time (Min.)	Pressure (psig)	Temp (deg F)	Annotation
0	1658.31	109.10	Initial Hydro-static
1	15.29	108.18	Open To Flow (1)
17	24.41	109.23	Shut-In(1)
64	958.67	110.95	End Shut-In(1)
65	29.36	110.58	Open To Flow (2)
92	39.45	110.86	Shut-In(2)
157	974.23	112.80	End Shut-In(2)
159	1628.03	113.33	Final Hydro-static

Recovery

Length (ft)	Description	Volume (bbl)
55.00	MW /w few o specs 17% m 83% w	0.27
0.00	Rw .21 ohms @ 35 deg	0.00

Gas Rates

Choke (inches)	Pressure (psig)	Gas Rate (Mcf/d)



**TRILOBITE
TESTING, INC**

DRILL STEM TEST REPORT

FLUID SUMMARY

Herman L.Loeb LLC

2-31s-3w Sumner Ks.

P.O.Box 838
Lawrenceville Il. 62439

Clark #8

Job Ticket: 59735

DST#: 1

ATTN: Jon Christensen

Test Start: 2015.01.13 @ 16:08:15

Mud and Cushion Information

Mud Type: Gel Chem

Cushion Type:

Oil API:

deg API

Mud Weight: 9.00 lb/gal

Cushion Length:

ft

Water Salinity:

74000 ppm

Viscosity: 57.00 sec/qt

Cushion Volume:

bbbl

Water Loss: 8.99 in³

Gas Cushion Type:

Resistivity: 0.00 ohm.m

Gas Cushion Pressure:

psig

Salinity: 4500.00 ppm

Filter Cake: 0.20 inches

Recovery Information

Recovery Table

Length ft	Description	Volume bbbl
55.00	MW /w few o specs 17%m 83%w	0.270
0.00	Rw .21 ohms@ 35 deg	0.000

Total Length: 55.00 ft

Total Volume: 0.270 bbl

Num Fluid Samples: 0

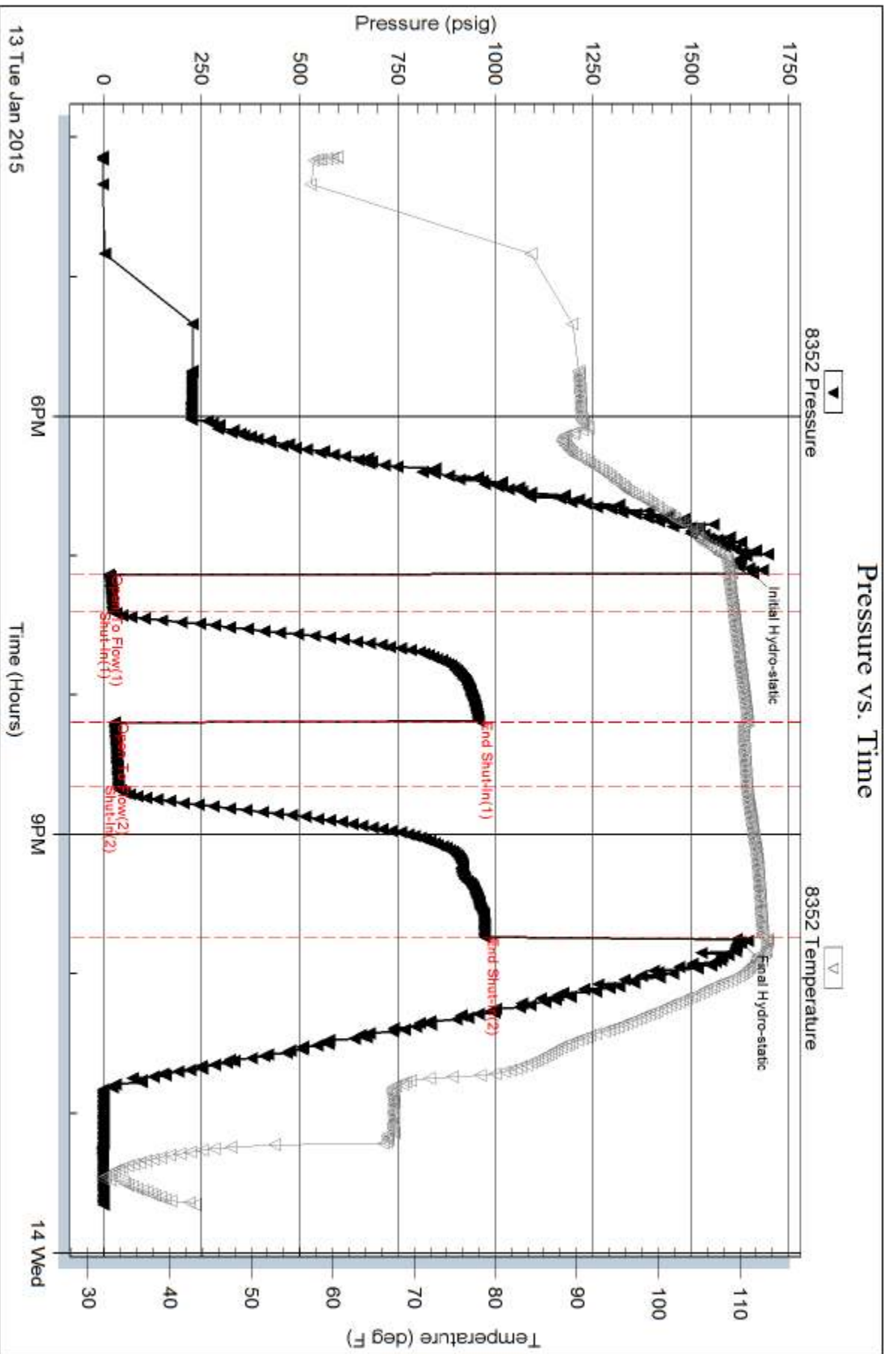
Num Gas Bombs: 0

Serial #: none

Laboratory Name:

Laboratory Location:

Recovery Comments:





PAGE	CUST NO	YARD #	INVOICE DATE
1 of 1	1007589	1718	01/12/2015
INVOICE NUMBER			
91698476			

Pratt (620) 672-1201
 B HERMAN L LOEB LLC
 I PO Box: 838
 L LAWRENCEVILLE
 L IL US 62439
 T
 O ATTN: ACCOUNTS PAYABLE

J LEASE NAME Clark 8
 O LOCATION
 B COUNTY Sumner
 S STATE KS
 I JOB DESCRIPTION Cement-New Well Casing/Pi
 T
 E JOB CONTACT

A 786
 9438

JOB #	EQUIPMENT #	PURCHASE ORDER NO.	TERMS	DUE DATE
40805050	19843		Net - 30 days	02/11/2015

	QTY	U of M	UNIT PRICE	INVOICE AMOUNT
For Service Dates: 01/10/2015 to 01/10/2015				
0040805050				
171811668A Cement-New Well Casing/Pi 01/10/2015				
Cement 8 5/8 Surface				
60/40 POZ	250.00	EA	7.92	1,980.00
Celloflake	63.00	EA	2.44	153.85
Calcium Chloride	645.00	EA	0.69	446.98
"Wooden Cmt Plug, 8 5/8""	1.00	EA	105.60	105.60
"Unit Mileage Chg (PU, cars one way)"	80.00	MI	2.97	237.60
Heavy Equipment Mileage	160.00	MI	4.95	792.00
"Proppant & Bulk Del. Chgs., per ton mil	860.00	EA	1.65	1,419.00
Depth Charge; 0-500'	1.00	EA	660.00	660.00
Blending & Mixing Service Charge	250.00	BAG	0.92	231.00
Plug Container Util. Chg.	1.00	EA	165.00	165.00
"Service Supervisor, first 8 hrs on loc.	1.00	EA	115.50	115.50

PAID

JAN 22 2015

SCANNED

56116

PLEASE REMIT TO:	SEND OTHER CORRESPONDENCE TO:	SUB TOTAL	6,306.53
BASIC ENERGY SERVICES, LP	BASIC ENERGY SERVICES, LP	TAX	171.63
PO BOX 841903	801 CHERRY ST, STE 2100	INVOICE TOTAL	6,478.16
DALLAS, TX 75284-1903	FORT WORTH, TX 76102		

Customer Herman L. Jacob, LLC	Lease No.	Date 1-10-2015
Lease C1CRK	Well # 8	
Field Order # 11668	Station P198TKS	Casing 8 5/8
		Depth 259
Type Job CNW/8 5/8 surface	Formation TD-262	County Sumner
		State KS
		Legal Description 2-315-34

PIPE DATA		PERFORATING DATA		FLUID USED		TREATMENT RESUME		
Casing Size	Tubing Size	Shots/Ft		Acid	RATE	PRESS	ISIP	
8 5/8							5 Min.	
Depth 259	Depth	From	To	Pre Pad	Max			
Volume 16 1/2	Volume	From	To	Pad	Min		10 Min.	
Max Press	Max Press	From	To	Frac	Avg		15 Min.	
Well Connection	Annulus Vol.	From	To		HHP Used		Annulus Pressure	
Plug Depth 239	Packer Depth	From	To	Flush	Gas Volume		Total Load	

Customer Representative Lenny Sloss	Station Manager Kevin Gordley	Treater Darin Franklin
Service Units 27183 84581 19843 19889 19918		
Driver Names Darin Ed Ed Gibson Gibson		

Time	Casing Pressure	Tubing Pressure	Bbls. Pumped	Rate	Service Log
8:45					on location / safety meeting
					259' 8 5/8 casing
					250SK 60/40 P02 2%0601, 3%0601
					1/4" # Caliper, 14.8 pas, 1.21 void, 5.18 4 cm
10:00am	300		3	5	Pump 3 bbls water
	300		54	5	mix 250SK cement
					Shut down
					Release plus
	300		15	3	Start displacement
10:45am					Shut in
					Cement did circulate 10 bbls
					Job complete / Darin d'claw
					Thank you!!!



PAGE	CUST NO	YARD #	INVOICE DATE
1 of 1	1007589	1718	01/16/2015
INVOICE NUMBER			J
91703144			

Pratt (620) 672-1201

B HERMAN L LOEB LLC
 I PO Box: 838
 L LAWRENCEVILLE
 L IL US 62439
 T
 O ATTN: ACCOUNTS PAYABLE

J LEASE NAME Clark 8
 O LOCATION
 B COUNTY Sumner A 786
 S STATE KS
 I JOB DESCRIPTION Cement-New Well Casing/Pi
 E JOB CONTACT 9438

JOB #	EQUIPMENT #	PURCHASE ORDER NO.	TERMS	DUE DATE	
40806530	20920		Net - 30 days	02/15/2015	
		QTY	U of M	UNIT PRICE	INVOICE AMOUNT
For Service Dates: 01/15/2015 to 01/15/2015					
0040806530					
171812153A Cement-New Well Casing/Pi 01/15/2015 Cement 5 1/2" Longstring					
50/50 POZ		300.00	EA	6.82	2,046.00 T
Celloflake		75.00	EA	2.29	172.05 T
Gypsum		1,260.00	EA	0.47	585.90 T
FLA-322		126.00	EA	4.65	585.90 T
Mud Flush		1,000.00	EA	0.93	930.00 T
Gilsonite		1,800.00	EA	0.42	747.72 T
KCL Potassium Chloride		680.00	EA	0.93	632.40 T
Claymax KCL Substitute		4.00	EA	21.70	86.80 T
"Latch Down Plug & Baffle, 5 1/2"" (Blu		1.00	EA	248.00	248.00
"Auto Fill Float Shoe 5 1/2"" (Blue)"		1.00	EA	223.20	223.20
"Turbolizer, 5 1/2"" (Blue)"		12.00	EA	68.20	818.40
"5 1/2"" Basket (Blue)"		2.00	EA	179.80	359.60
"Unit Mileage Chg (PU, cars one way)"		80.00	MI	2.79	223.20
Heavy Equipment Mileage		160.00	MI	4.65	744.00
"Proppant & Bulk Del. Chgs., per ton mil		1,008.00	EA	1.55	1,562.40
Depth Charge; 3001-4000'		1.00	EA	1,339.20	1,339.20
Blending & Mixing Service Charge		300.00	BAG	0.87	260.40
Casing Swivel Rental		1.00	EA	124.00	124.00
Plug Container Util. Chg.		1.00	EA	155.00	155.00
"Service Supervisor, first 8 hrs on loc.		1.00	EA	108.50	108.50

PAID

JAN 20 2015

SCANNED

PLEASE REMIT TO:	SEND OTHER CORRESPONDENCE TO:	56326	SUB TOTAL	11,952.67
BASIC ENERGY SERVICES, LP	BASIC ENERGY SERVICES, LP		TAX	384.82
PO BOX 841903	801 CHERRY ST, STE 2100		INVOICE TOTAL	12,337.49
DALLAS, TX 75284-1903	FORT WORTH, TX 76102			

Customer <i>Herman Lhoeb L.L.C.</i>	Lease No. 11111	Date <i>01-15-15</i>	
Lease <i>Clark</i>	Well # <i>8</i>		
Field Order # <i>2152</i>	Station <i>Pratt</i>	Casing <i>5 1/2</i>	Depth <i>3395</i>
Type Job <i>LNW 5 1/2 LS</i>	Formation	County <i>Sumner</i>	State <i>KS</i>
		Legal Description <i>2 31 3</i>	

PIPE DATA		PERFORATING DATA		FLUID USED		TREATMENT RESUME		
Casing Size	Tubing Size	Shots/Ft		Acid	RATE	PRESS	ISIP	
<i>5 1/2</i>								
Depth	Depth	From	To	Pre Pad	Max		5 Min.	
<i>3395</i>								
Volume	Volume	From	To	Pad	Min		10 Min.	
<i>80.5</i>								
Max Press	Max Press	From	To	Frac	Avg		15 Min.	
Well Connection	Annulus Vol.	From	To		HHP Used		Annulus Pressure	
Plug Depth	Packer Depth	From	To	Flush	Gas Volume		Total Load	
<i>3381</i>								

Customer Representative <i>Tracy Black</i>	Station Manager <i>Kevin</i>	Treater <i>Pat / JDR</i>
---	---------------------------------	-----------------------------

Service Units	<i>33705</i>	<i>20920</i>	<i>70959</i>	<i>21010</i>		<i>92911</i>				
Driver Names	<i>Josh</i>		<i>Aaron Gibson</i>			<i>Joe</i>	<i>Pat E</i>			

Time	Casing Pressure	Tubing Pressure	Bbls. Pumped	Rate	Service Log
<i>20:25</i>					<i>ON location / Safety Meeting</i>
					<i>Running 80 joints of 5 1/2 casing at 15.5 lb</i>
					<i>Centralizers on joint 1, 2, 3, 5, 7, 10, 12, 14, 15, 18, 21, 25</i>
					<i>Basket on 6 + 13 on collar</i>
<i>21:30</i>					<i>Start running casing</i>
<i>23:15</i>					<i>Casing on bottom</i>
<i>23:30</i>					<i>Circulate with rig</i>
<i>00:20</i>					<i>Hook up to pump to start job</i>
<i>00:25</i>	<i>200</i>		<i>5</i>	<i>5</i>	<i>H₂O spacer</i>
<i>00:26</i>	<i>200</i>		<i>24</i>	<i>5</i>	<i>Mix mud flush</i>
<i>00:30</i>	<i>200</i>		<i>5</i>	<i>5</i>	<i>H₂O spacer</i>
<i>00:40</i>	<i>200</i>		<i>60</i>	<i>5</i>	<i>Mix 250 sks of 50/50 POZ @ 14 lbs</i>
<i>00:55</i>			<i>A</i>	<i>A</i>	<i>Shut down clear pump + line</i>
<i>01:00</i>			<i>A</i>	<i>6 1/2</i>	<i>Release plug, start H₂O displacement w/ 200K</i>
<i>01:10</i>	<i>250</i>		<i>30</i> <i>30</i>	<i>6 1/2</i>	<i>Lift psi</i>
<i>01:25</i>	<i>700</i>		<i>70</i> <i>70</i>	<i>4</i>	<i>Slow rate</i>
<i>01:30</i>	<i>1500</i>		<i>80</i>	<i>0</i>	<i>Plug down</i>
					<i>Plug rat + mouse hole</i>
					<i>Job complete</i>
					<i>Thank You</i>
					<i>Patrick Egan / Joe Murphy</i>