

Confidentiality Requested:

Yes No

KANSAS CORPORATION COMMISSION 1241341
OIL & GAS CONSERVATION DIVISION

Form ACO-1

August 2013

Form must be Typed
Form must be Signed
All blanks must be Filled

WELL COMPLETION FORM
WELL HISTORY - DESCRIPTION OF WELL & LEASE

OPERATOR: License # _____

Name: _____

Address 1: _____

Address 2: _____

City: _____ State: _____ Zip: _____ + _____

Contact Person: _____

Phone: (_____) _____

CONTRACTOR: License # _____

Name: _____

Wellsite Geologist: _____

Purchaser: _____

Designate Type of Completion:

- New Well Re-Entry Workover
- Oil WSW SWD SIOW
- Gas D&A ENHR SIGW
- OG GSW Temp. Abd.
- CM (Coal Bed Methane)
- Cathodic Other (Core, Expl., etc.): _____

If Workover/Re-entry: Old Well Info as follows:

Operator: _____

Well Name: _____

Original Comp. Date: _____ Original Total Depth: _____

- Deepening Re-perf. Conv. to ENHR Conv. to SWD
- Plug Back Conv. to GSW Conv. to Producer
- Commingled Permit #: _____
- Dual Completion Permit #: _____
- SWD Permit #: _____
- ENHR Permit #: _____
- GSW Permit #: _____

Spud Date or Recompletion Date	Date Reached TD	Completion Date or Recompletion Date
-----------------------------------	-----------------	---

API No. 15 - _____

Spot Description: _____

_____ - _____ - _____ Sec. _____ Twp. _____ S. R. _____ East West

_____ Feet from North / South Line of Section

_____ Feet from East / West Line of Section

Footages Calculated from Nearest Outside Section Corner:

- NE NW SE SW

GPS Location: Lat: _____, Long: _____
(e.g. xx.xxxxx) (e.g. -xxx.xxxxx)

Datum: NAD27 NAD83 WGS84

County: _____

Lease Name: _____ Well #: _____

Field Name: _____

Producing Formation: _____

Elevation: Ground: _____ Kelly Bushing: _____

Total Vertical Depth: _____ Plug Back Total Depth: _____

Amount of Surface Pipe Set and Cemented at: _____ Feet

Multiple Stage Cementing Collar Used? Yes No

If yes, show depth set: _____ Feet

If Alternate II completion, cement circulated from: _____

feet depth to: _____ w/ _____ sx cmt.

Drilling Fluid Management Plan

(Data must be collected from the Reserve Pit)

Chloride content: _____ ppm Fluid volume: _____ bbls

Dewatering method used: _____

Location of fluid disposal if hauled offsite:

Operator Name: _____

Lease Name: _____ License #: _____

Quarter _____ Sec. _____ Twp. _____ S. R. _____ East West

County: _____ Permit #: _____

AFFIDAVIT

I am the affiant and I hereby certify that all requirements of the statutes, rules and regulations promulgated to regulate the oil and gas industry have been fully complied with and the statements herein are complete and correct to the best of my knowledge.

Submitted Electronically

KCC Office Use ONLY

- Confidentiality Requested
Date: _____
- Confidential Release Date: _____
- Wireline Log Received
- Geologist Report Received
- UIC Distribution
- ALT I II III Approved by: _____ Date: _____

1241341

Operator Name: _____ Lease Name: _____ Well #: _____

Sec. _____ Twp. _____ S. R. _____ East West County: _____

INSTRUCTIONS: Show important tops of formations penetrated. Detail all cores. Report all final copies of drill stems tests giving interval tested, time tool open and closed, flowing and shut-in pressures, whether shut-in pressure reached static level, hydrostatic pressures, bottom hole temperature, fluid recovery, and flow rates if gas to surface test, along with final chart(s). Attach extra sheet if more space is needed.

Final Radioactivity Log, Final Logs run to obtain Geophysical Data and Final Electric Logs must be emailed to kcc-well-logs@kcc.ks.gov. Digital electronic log files must be submitted in LAS version 2.0 or newer AND an image file (TIFF or PDF).

Drill Stem Tests Taken <input type="checkbox"/> Yes <input type="checkbox"/> No <i>(Attach Additional Sheets)</i> Samples Sent to Geological Survey <input type="checkbox"/> Yes <input type="checkbox"/> No Cores Taken <input type="checkbox"/> Yes <input type="checkbox"/> No Electric Log Run <input type="checkbox"/> Yes <input type="checkbox"/> No List All E. Logs Run: _____	<input type="checkbox"/> Log Formation (Top), Depth and Datum <input type="checkbox"/> Sample Name Top Datum
--	---

CASING RECORD <input type="checkbox"/> New <input type="checkbox"/> Used							
Report all strings set-conductor, surface, intermediate, production, etc.							
Purpose of String	Size Hole Drilled	Size Casing Set (In O.D.)	Weight Lbs. / Ft.	Setting Depth	Type of Cement	# Sacks Used	Type and Percent Additives

ADDITIONAL CEMENTING / SQUEEZE RECORD				
Purpose:	Depth Top Bottom	Type of Cement	# Sacks Used	Type and Percent Additives
<input type="checkbox"/> Perforate <input type="checkbox"/> Protect Casing <input type="checkbox"/> Plug Back TD <input type="checkbox"/> Plug Off Zone				

Did you perform a hydraulic fracturing treatment on this well? Yes No *(If No, skip questions 2 and 3)*

Does the volume of the total base fluid of the hydraulic fracturing treatment exceed 350,000 gallons? Yes No *(If No, skip question 3)*

Was the hydraulic fracturing treatment information submitted to the chemical disclosure registry? Yes No *(If No, fill out Page Three of the ACO-1)*

Shots Per Foot	PERFORATION RECORD - Bridge Plugs Set/Type Specify Footage of Each Interval Perforated	Acid, Fracture, Shot, Cement Squeeze Record <i>(Amount and Kind of Material Used)</i>	Depth

TUBING RECORD:	Size:	Set At:	Packer At:	Liner Run: <input type="checkbox"/> Yes <input type="checkbox"/> No
----------------	-------	---------	------------	---

Date of First, Resumed Production, SWD or ENHR.	Producing Method: <input type="checkbox"/> Flowing <input type="checkbox"/> Pumping <input type="checkbox"/> Gas Lift <input type="checkbox"/> Other <i>(Explain)</i> _____						
Estimated Production Per 24 Hours	Oil Bbls.	Gas Mcf	Water Bbls.	Gas-Oil Ratio	Gravity		

DISPOSITION OF GAS: <input type="checkbox"/> Vented <input type="checkbox"/> Sold <input type="checkbox"/> Used on Lease <i>(If vented, Submit ACO-18.)</i>	METHOD OF COMPLETION: <input type="checkbox"/> Open Hole <input type="checkbox"/> Perf. <input type="checkbox"/> Dually Comp. <input type="checkbox"/> Commingled <i>(Submit ACO-5)</i> <input type="checkbox"/> Other <i>(Specify)</i> _____	PRODUCTION INTERVAL: _____ _____
--	---	---

Form	ACO1 - Well Completion
Operator	Noble Petroleum, Inc.
Well Name	SCULLY-CORP 1
Doc ID	1241341

Tops

Name	Top	Datum
Lansing	1925	-556
BKC	2286	-917
Marmaton	2294	-925
Mississippi	2510	-1141
Mississippi lm	2591	-1222
Kinderhook	2680	-1311
Viola	2931	-1562
Simpson	3012	-1643
Arbuckle	3078	-1709

Noble Petroleum, Inc.

GEOLOGICAL REPORT DRILLING TIME & SAMPLE LOG

API #: 15-115-21-190
REPORT PREPARED BY FRANK S. WIEZGEOLOGIST



COMPANY	Noble Petroleum, Inc.	ELEVATION	K.B. 1369
LEASE	Scully-Corp #1	D.F.	
FIELD	Widcat	G.L.	1360
LOCATION	550 ENL & 2070 FEL	DEPTH MEASURED FROM KB	
SEC	27 TWP- 18S RGE 2E	Log	Drilling <input checked="" type="checkbox"/>
COUNTY	Marion STATE Kansas	Strata	8.58 (at 253 KB w/150K)
CONTRACTOR	C & G Drilling	Production	
SPUD	1-3-15 COMP 1-21-15	Electric logs	
SAMPLES	SAVED FROM 1900' TO RTD	GMT/MSL/DIT/PT/CST	
REFERENCES	PREPARED BY FRANK S. WIEZGEOLOGIST	FORMATION	A. B. C.
FORMATION	SAMPLE	E L O O S	D A T U M

FORMATION	SAMPLE	E L O O S	D A T U M
Lansing	1926	1925	-556
Stark	2212	2213	-892
BKC	2287	2286	-917
Marmaton	2286	2294	-925
Mississippi	2510	2510	-1141
Miss Lime	2592	2591	-1222
Kinderhook	MSG	2681	-1338
Hutton	MSG	MSG	MSG
Viola	2931	2931	-1622
Simpson SS	3016	3012	-1643
Abductee	3081	3078	-1709
RDD/LTD	3135	3135	-1784

SHALE	
SANDSTONE	
LIMESTONE	
DOLOMITE	
HALITE	
ANHYDRITE/GYPSUM	

1700

1750

1800

1850

1900

1950

2000

2050

2100

2150

2200

2250

2300

2350

2400

2450

2500

2550

2600

2650

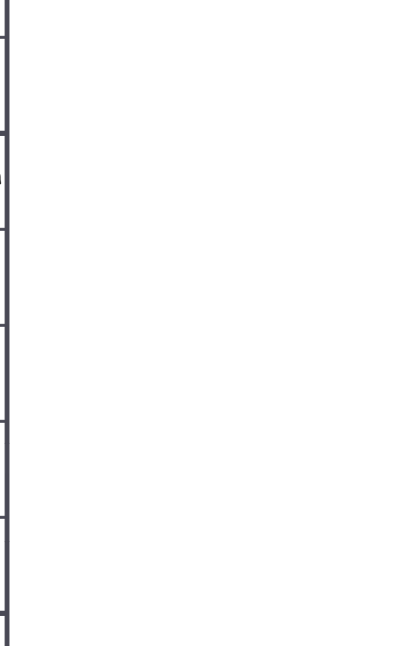
2700

2750

2800

2850

Lansing 1926 -557



Muncie Creek 2109 -740

Stark 2212 -843

Hertha 2218 -849

Hushpuckney 2248 -879

Hertha 2253 -884

BKC 2287 -918

Marmaton 2296 -927

Altamont 2325 -956

Pawnee 2371 -1002

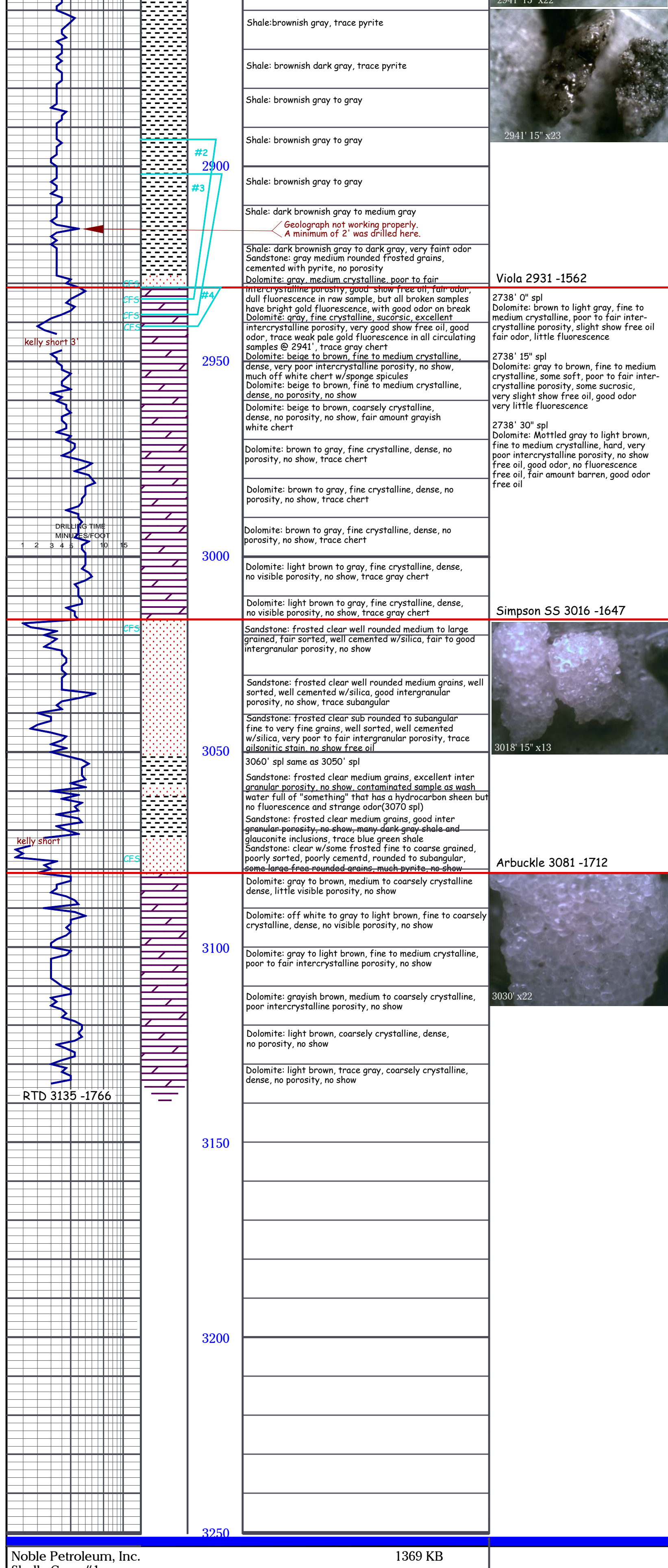
Cherokee 2443 -1074

Miss Warsaw 2510 -1141

Miss Osage 2524 -1155

Miss Lime 2592 -1223

Kinderhook 2681 -1312



Noble Petroleum, Inc. 1369 KB
 Skully-Corp #1
 550' FNL & 2,070' FEL
 27-18S-2E
 Marion Co., KS

Comments:

01/09/15 Moving in C&G Rig 2.
 01/12/15 Rigging up. Plan to spud 1/13/15.
 01/13/15 Rigging up. Preparing to spud.
 01/14/15 Drilling @ 279' @ 6:00 AM. Spudded at @ 12:00 PM 01/13/15. Drilled 12.25' hole to 235'. Ran 225' of 8.625" 23# casing. Set @ 235'. KB. (6' off bottom.) Elite Cementing and Acid cemented with 150 sacks class A + 3% CaCl, 2% gel, 25# Flo-Seal. Cement did not circulate. Plug down @ 7:45 PM 01/13/15. Ran 1" in annulus. Pumped 35 sx of same blend and circulated to surface. Finished 1" job @ 11:25 PM 01/13/15. Elite ticket # 2113. Under surface @ 4:40 AM 1/14/2015.
 01/15/15 Drilling @ 1898' @ 7:45 AM. Changed out PDC @ 1892'. Mud wt. 9# Vis 33. Deviation surveys 1/4" @ 529', 1/2" @ 1030', 1/2" @ 1627', 1/2" @ 1892'.
 01/16/15 Drilling @ 2351' @ 7:25 AM Vis 38 Wt 9.0 LCM 1/2#.
 01/17/15 Drilling @ 2536' @ 8:00 AM. Vis 50 Wt. 9.3 LCM 1#. DST #1 2543'-2530' / 30-45-45-60. Blow off of bottom of bucket in 1.25 minutes. Gas to surface in 15 minutes. Immediate blow off of BOB on 2nd open. Max gas flow 43 MCF/D. Final gas flow 37 MCF/D. Recovered 2109' GIP + 302' VSOCGM, break down 2% Oil, 3% Gas, 95% Mud. IHP 1167 PSIG, IFP 62-102 PSIG, ISI 560 PSIG, FFP 94-121 PSIG, FSIP 560 PSIG, FHP 1153 PSIG. BHT 97°. Deviation 3/4" @ 2530'.
 01/18/15 Drilling @ 2860' @ 7:08 AM Vis 42 Wt 9.2 LCM 2#.
 01/19/15 Running DST #3 2902'-2938' @ 7:00 AM. Vis 50 Wt. 9.3 LCM 2#. DST #2 2893'-2934' / 30-30-30-45. Weak surface blow died in 20 minutes. No blow on 2nd open. Recovered 3' oil spotted mud + 1' free oil. IHP 1394 PSIG, IFP 10-14 PSIG, ISI 934 PSIG, FFP 15-17 PSIG, FSIP 999 PSIG, FHP 1376 PSIG. BHT 101°.
 01/20/14 Circulating @ 3018' @ 7:29 AM. Vis 50 Wt. 9.3 LCM 3#. DST #3 2902'-2938' / 30-45-30-45. Weak blow built to 1/2" on initial open. No blow on 2nd open. Recovered 12' VSOCMW 2% oil, 10% mud, 88% water + 1' free oil. IHP 1400 PSIG, IFP 9-19 PSIG, ISIP 1052 PSIG, FFP 16-19 PSIG, FSIP 1061 PSIG, FHP 1359 PSIG. BHT 99°. DST #4 2931'-2941' / 30-45-45-60. Weak blow to 1.5" on initial open. Weak blow to 1" on 2nd open. Recovered 63' VSOCMW 2% oil, 5% mud, 93% water + 2' free oil. IHP 1416 PSIG, IFP 9-24 PSIG, ISIP 1102 PSIG, FFP 25-45 PSIG, FSIP 1101 PSIG, FHP 1393 PSIG. BHT 102°. Chlorides 45,000. Rw .9 @ 58°.

DST #1: 2443-2530: 30-45-45-60

Formation Test No. 1 Interval Tested from 2443 ft. to 2530 ft. Total Depth 2530 ft.
 Packer Depth 2438 ft. Size 6 3/4 in. Packer depth ft. Size 6 3/4 in.
 Packer Depth 2443 ft. Size 6 3/4 in. Packer depth ft. Size 6 3/4 in.
 Depth of Selective Zone Set

Blow: 1st Open: STRONG BLOW BOB IN 1-1/4 MIN GAS TO SURFACE IN 15 MIN (HAMMER UNION ON HEAD UNSCREWED)
 2nd Open: BLEW IMMEDIATELY OF BOTTOM & FAS TO SURFACE (WEAK SURFACE BLOW BACK)

Time Set Packer(s) 11:41 P.M. A.M. P.M. Time Started Off Bottom 2:41 A.M. A.M. P.M. Maximum Temperature 97
 Initial Hydrostatic Pressure..... (A) 1167 P.S.I.
 Initial Flow Period..... Minutes 30 (B) 62 P.S.I. to (C) 102 P.S.I.
 Initial Closed In Period..... Minutes 45 (D) 560 P.S.I.
 Final Flow Period..... Minutes 45 (E) 94 P.S.I. to (F) 121 P.S.I.
 Final Closed In Period..... Minutes 60 (G) 560 P.S.I.
 Final Hydrostatic Pressure..... (H) 1153 P.S.I.

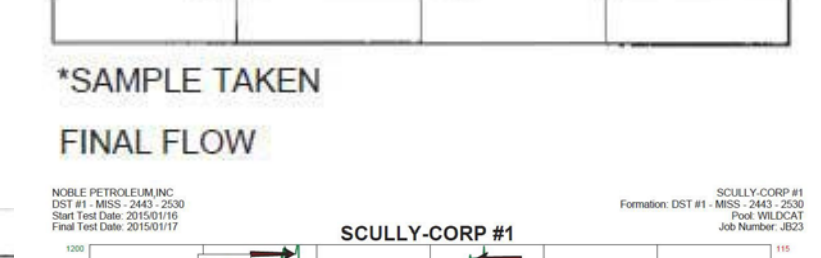
INITIAL FLOW

Time O'Clock	Orifice Size	Gauge	CF/D
30	1/4 in.	4 PSI in.	18.5
	in.	in.	
	in.	in.	
	in.	in.	
	in.	in.	
	in.	in.	
	in.	in.	
	in.	in.	

FINAL FLOW PSI

Time O'Clock	Orifice Size	Gauge	CF/D
2	1/4 in.	12 PSI in.	12.7
5	1/4 in.	17 PSI in.	42.4
10	1/4 in.	17.5 PSI in.	43.15
15	1/4 in.	17 PSI in.	42.4
20	1/4 in.	16 PSI in.	40.9
25	1/4 in.	15 PSI in.	39.2
30	1/4 in.	14.5 PSI in.	38.4
35	1/4 in.	14 PSI in.	37.6
40	1/4 in.	14 PSI in.	37.6
45	1/4 in.	13.5 PSI in.	36.75

Recovered 302 ft. of MUD WITH OIL SPOTS
 Recovered ft. of 2109 - GIP
 Recovered ft. of
 Recovered ft. of
 Recovered ft. of
 Recovered ft. of
 Remarks: TOTAL FLUID; 320' OF TOTAL FLUID



TOOL SAMPLE: VSOCGM - 2%O 3%G 95%M

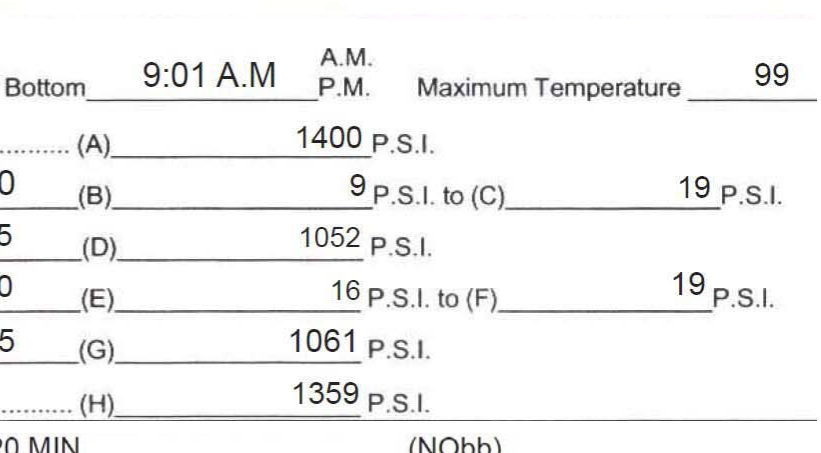
DST #2: 2893-2934: 30-45-30-60

Formation Test No. 2 Interval Tested from 2893 ft. to 2934 ft. Total Depth 2934 ft.
 Packer Depth 2888 ft. Size 6 3/4 in. Packer depth ft. Size 6 3/4 in.
 Packer Depth 2893 ft. Size 6 3/4 in. Packer depth ft. Size 6 3/4 in.
 Depth of Selective Zone Set

Time Set Packer(s) 6:31 A.M. A.M. P.M. Time Started Off Bottom 9:01 A.M. A.M. P.M. Maximum Temperature 99
 Initial Hydrostatic Pressure..... (A) 1400 P.S.I.
 Initial Flow Period..... Minutes 30 (B) 9 P.S.I. to (C) 19 P.S.I.
 Initial Closed In Period..... Minutes 45 (D) 1052 P.S.I.
 Final Flow Period..... Minutes 30 (E) 16 P.S.I. to (F) 19 P.S.I.
 Final Closed In Period..... Minutes 45 (G) 1061 P.S.I.
 Final Hydrostatic Pressure..... (H) 1359 P.S.I.

Blow: 1st Open: WEAK SURFACE BLOW DIED IN 20 MIN (NObb)
 2nd Open: DEAD NO BLOW (NObb)

Recovered 3 ft. of MUD WITH OIL SPOTS
 Recovered 1 ft. of FREE OIL
 Recovered ft. of
 Recovered ft. of
 Recovered ft. of
 Recovered ft. of
 Remarks: TOTAL FLUID; 4' OF TOTAL FLUID



TOOL SAMPLE: MUD WITH A SCUM OF OIL

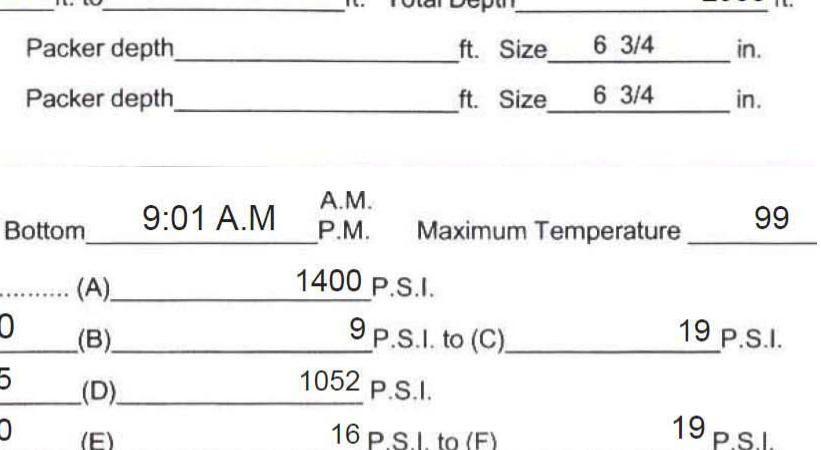
DST #3: 2902-2938: 30-45-45-60

Formation Test No. 3 Interval Tested from 2902 ft. to 2938 ft. Total Depth 2938 ft.
 Packer Depth 2897 ft. Size 6 3/4 in. Packer depth ft. Size 6 3/4 in.
 Packer Depth 2902 ft. Size 6 3/4 in. Packer depth ft. Size 6 3/4 in.
 Depth of Selective Zone Set

Time Set Packer(s) 6:31 A.M. A.M. P.M. Time Started Off Bottom 9:01 A.M. A.M. P.M. Maximum Temperature 99
 Initial Hydrostatic Pressure..... (A) 1400 P.S.I.
 Initial Flow Period..... Minutes 30 (B) 9 P.S.I. to (C) 19 P.S.I.
 Initial Closed In Period..... Minutes 45 (D) 1052 P.S.I.
 Final Flow Period..... Minutes 30 (E) 16 P.S.I. to (F) 19 P.S.I.
 Final Closed In Period..... Minutes 45 (G) 1061 P.S.I.
 Final Hydrostatic Pressure..... (H) 1359 P.S.I.

Blow: 1st Open: WEAK BLOW BUILT TO 1/2 IN (NObb)
 2nd Open: DEAD NO BLOW (NObb)

Recovered 12 ft. of VSOCMW 2%O 10%M 88%W
 Recovered 1 ft. of FREE OIL
 Recovered ft. of
 Recovered ft. of
 Recovered ft. of
 Recovered ft. of
 Remarks: TOTAL FLUID; 13' OF TOTAL FLUID



TOOL SAMPLE: VSOCMW 2%O 10%M 88%W

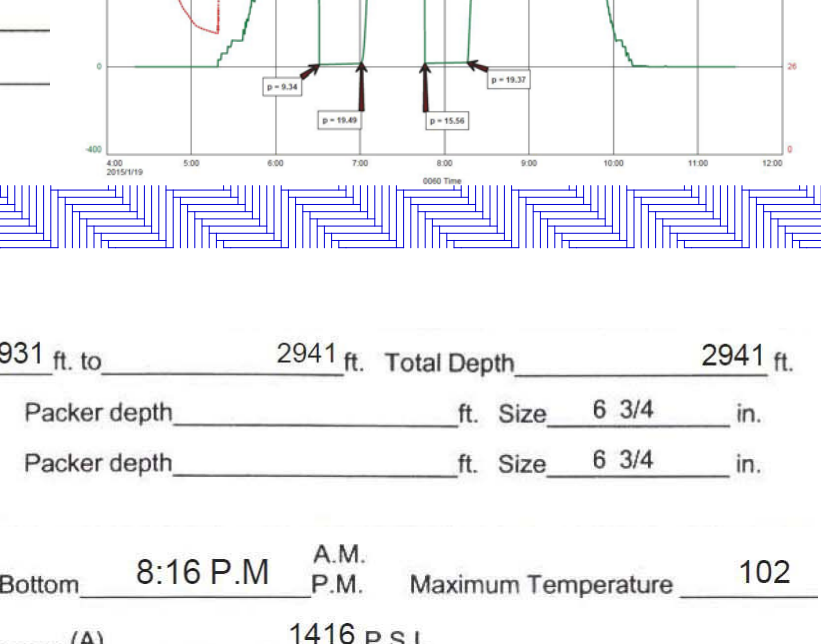
DST #4: 2931-2941: 30-45-45-60

Formation Test No. 4 Interval Tested from 2931 ft. to 2941 ft. Total Depth 2941 ft.
 Packer Depth 2926 ft. Size 6 3/4 in. Packer depth ft. Size 6 3/4 in.
 Packer Depth 2931 ft. Size 6 3/4 in. Packer depth ft. Size 6 3/4 in.
 Depth of Selective Zone Set

Time Set Packer(s) 5:16 P.M. A.M. P.M. Time Started Off Bottom 8:16 P.M. A.M. P.M. Maximum Temperature 102
 Initial Hydrostatic Pressure..... (A) 1416 P.S.I.
 Initial Flow Period..... Minutes 30 (B) 9 P.S.I. to (C) 24 P.S.I.
 Initial Closed In Period..... Minutes 45 (D) 1102 P.S.I.
 Final Flow Period..... Minutes 45 (E) 25 P.S.I. to (F) 45 P.S.I.
 Final Closed In Period..... Minutes 60 (G) 1101 P.S.I.
 Final Hydrostatic Pressure..... (H) 1393 P.S.I.

Blow: 1st Open: WEAK BLOW BUILT TO 1-1/2 IN (NObb)
 2nd Open: WEAK BLOW BUILT TO 1 IN (NObb)

Recovered 63 ft. of VSOCMW 2%O 5%M 93%W
 Recovered 2 ft. of FREE OIL
 Recovered ft. of
 Recovered ft. of RW .9@58 DEG
 Recovered ft. of 45,000 PPM
 Recovered ft. of
 Remarks: TOTAL FLUID; 65' OF TOTAL FLUID

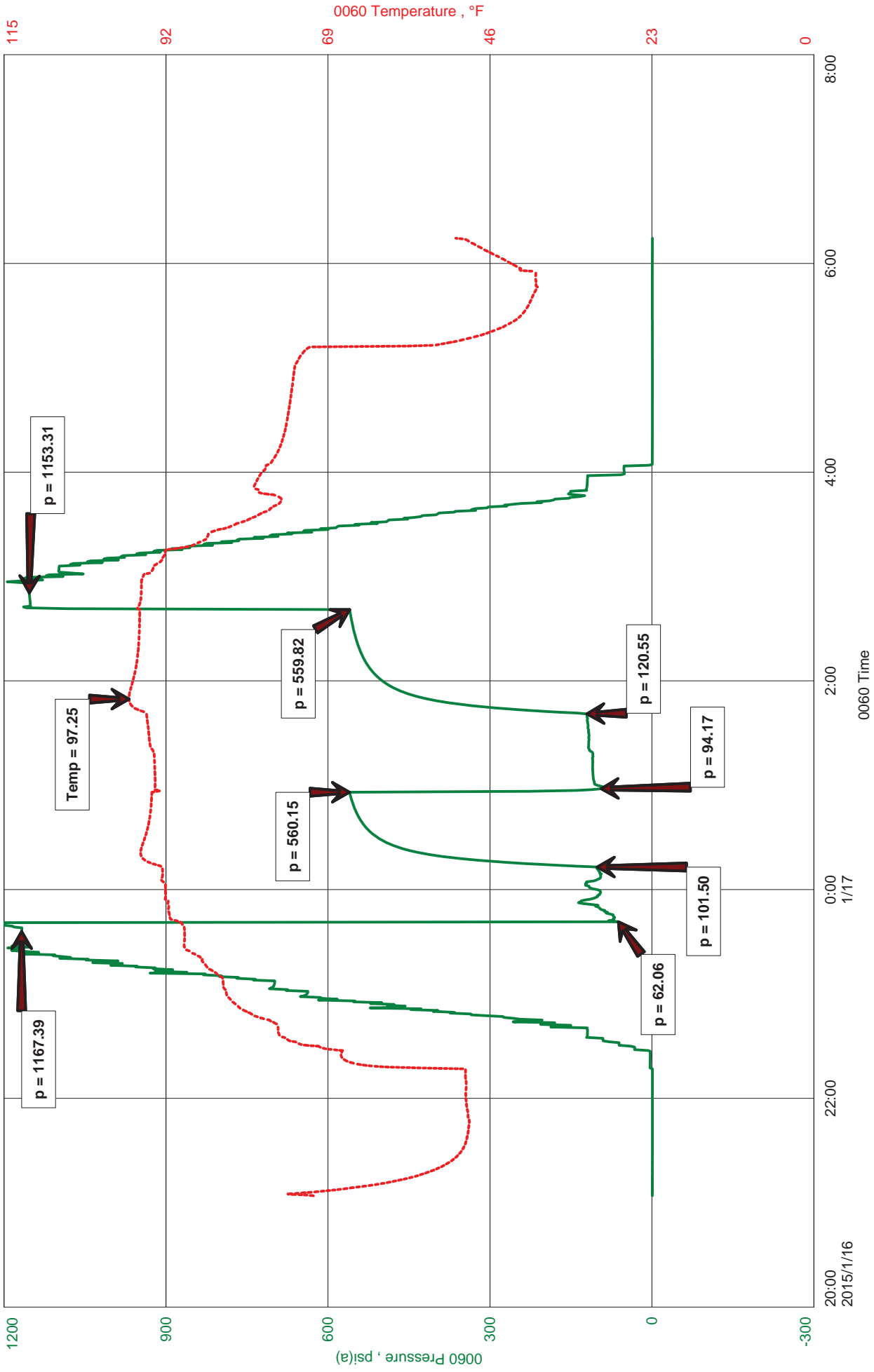


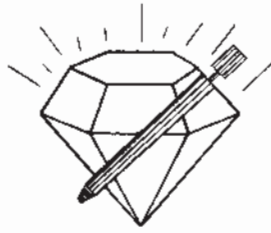
TOOL SAMPLE: VSOCMW 2%O 5%M 93%W

NOBLE PETROLEUM, INC
DST #1 - MISS - 2443 - 2530
Start Test Date: 2015/01/16
Final Test Date: 2015/01/17

SCULLY-CORP #1
Formation: DST #1 - MISS - 2443 - 2530
Pool: WILDCAT
Job Number: JB23

SCULLY-CORP #1





DIAMOND TESTING
 P. O. Box 157
HOISINGTON, KANSAS 67544
 (316) 653-7550
GAS VOLUME REPORT

Company NOBLE PETROLEUM, INC Lease & Well No. SCULLY-CORP #1
 Date 1-16-15 Sec. 27 Twp. 18S Rge. 2W Location _____ County MARION State KS
 Drilling Contractor C & G DRILLING, INC Formation MISS DST No. 1

Remarks: FIRST OPEN; GAS TO SURFACE IN 15 MIN
SECOND OPEN; BLEW IMMEDIATLY OF BOTTOM & GAS TO SURFACE

INITIAL FLOW

Time O'Clock	Orifice Size	Gauge	CF/D
30	1/4 in.	4 PSI in.	18.5
	in.	in.	
	in.	in.	
	in.	in.	
	in.	in.	
	in.	in.	
	in.	in.	
	in.	in.	
	in.	in.	
	in.	in.	

FINAL FLOW PSI

Time O'Clock	Orifice Size	Gauge	CF/D
2	1/4 in.	12 PSI in.	12.7
5	1/4 in.	17 PSI in.	42.4
10	1/4 in.	17.5 PSI in.	43.15
15	1/4 in.	17 PSI in.	42.4
20	1/4 in.	16 PSI in.	40.9
25	1/4 in.	15 PSI in.	39.2
30	1/4 in.	14.5 PSI in.	38.4
35	1/4 in.	14 PSI in.	37.6
40	1/4 in.	14 PSI in.	37.6
45	1/4 in.	13.5 PSI in.	36.75

*SAMPLE TAKEN

FINAL FLOW



Hoisington, Kansas

JEFF BROWN
620-617-6373
brown.dtlc@gmail.com

General Information

Company Name NOBLE PETROLEUM,INC

Test Information

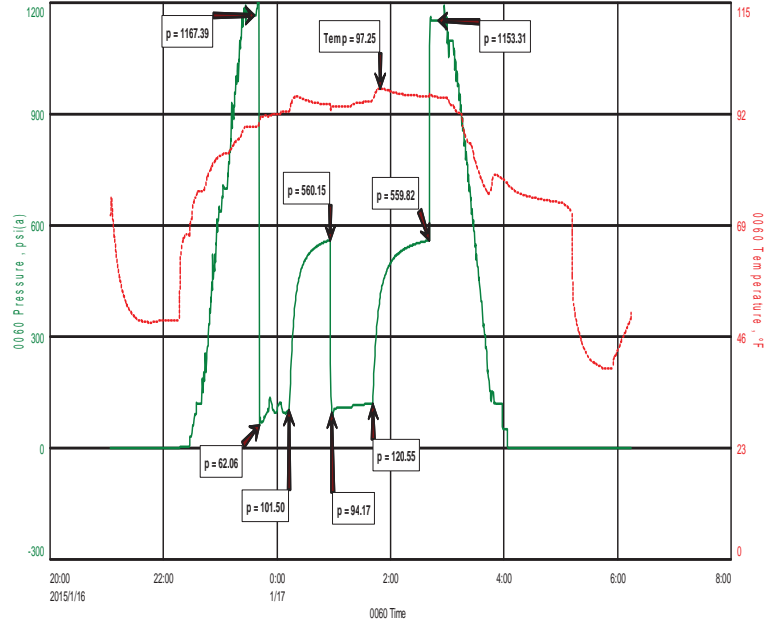
Contact
Well Name
Unique Well ID
Surface Location
Field
Well Operator
Test Type
Formation
Well Fluid Type
Test Purpose (AEUB)
Start Test Date
Start Test Time
Final Test Date
Final Test Time
Job Number
Representative
Prepared By
Report Date

JAY ABLAH
SCULLY-CORP #1
DST #1 - MISS - 2443 - 2530
SEC- 27-18S-2W - MARION, CNTY, KS
WILDCAT
NOBLE PETROLEUM,INC
Drill Stem Test
DST #1 - MISS - 2443 - 2530
01 Oil
Initial Test
2015/01/16
21:04:00
2015/01/17
06:15:00
JB23
JEFF BROWN
JEFF BROWN
2015/01/16

NOBLE PETROLEUM,INC
 DST #1 - MISS - 2443 - 2530
 Start Test Date: 2015/01/16
 Final Test Date: 2015/01/17

SCULLY-CORP #1
 Formation: DST #1 - MISS - 2443 - 2530
 Pool: WILDCAT
 Job Number: JB23

SCULLY-CORP #1



FLUID RECOVERY

FLUID RECOVERY; 302' OF MUD WITH OIL SPOTS
2109'- GIP

TOOL SAMPLE; VSOCGM - 2%O 3%G 95%M



DIAMOND TESTING
P.O. Box 157
HOISINGTON, KANSAS 67544
(800) 542-7313
DRILL-STEM TEST TICKET
FILE: SCULLY-CORP #1 DST1

TIME ON: 21:04
TIME OFF: 06:15

Company NOBLE PETROLEUM, INC Lease & Well No. SCULLY-CORP #1
Contractor C & G DRILLING, INC Charge to NOBLE PETROLEUM, INC
Elevation 1369 KB Formation MISS Effective Pay _____ Ft. Ticket No. JB23
Date 1-16-15 Sec. 27 Twp. _____ 18 S Range _____ 2 W County MARION State KANSAS
Test Approved By FRANK MIZE Diamond Representative JEFF BROWN

Formation Test No. 1 Interval Tested from 2443 ft. to 2530 ft. Total Depth 2530 ft.
Packer Depth 2438 ft. Size 6 3/4 in. Packer depth _____ ft. Size 6 3/4 in.
Packer Depth 2443 ft. Size 6 3/4 in. Packer depth _____ ft. Size 6 3/4 in.

Depth of Selective Zone Set _____
Top Recorder Depth (Inside) 2424 ft. Recorder Number 0060 Cap. 5,000 P.S.I.
Bottom Recorder Depth (Outside) 2512 ft. Recorder Number 5517 Cap. 5000 P.S.I.
Below Straddle Recorder Depth _____ ft. Recorder Number _____ Cap. _____ P.S.I.

Mud Type CHEMICAL Viscosity 34 Drill Collar Length 239 ft. I.D. 2 1/4 in.
Weight 9.5 Water Loss 11.6 cc. Weight Pipe Length 0 ft. I.D. 2 7/8 in.
Chlorides 1050 P.P.M. Drill Pipe Length 2172 ft. I.D. 3 1/2 in.
Jars: Make STERLING Serial Number 11 Test Tool Length 32 ft. Tool Size 3 1/2-IF in.
Did Well Flow? NO Reversed Out NO Anchor Length 87 ft. Size 4 1/2-FH in.
Main Hole Size 7 7/8 Tool Joint Size 4 1/2 XH in. Surface Choke Size 1 in. Bottom Choke Size 5/8 in.

Blow: 1st Open: STRONG BLOW BOB IN 1-1/4 MIN GAS TO SURFACE IN 15 MIN (HAMMER UNION ON HEAD UNSCREWED)
2nd Open: BLEW IMMEDIATLY OF BOTTOM & FAS TO SURFACE (WEAK SURFACE BLOW BACK)

Recovered <u>302</u> ft. of <u>MUD WITH OIL SPOTS</u>	
Recovered _____ ft. of <u>2109 - GIP</u>	
Recovered _____ ft. of _____	
Recovered _____ ft. of _____	
Recovered _____ ft. of _____	Price Job
Recovered _____ ft. of _____	Other Charges
Remarks: <u>TOTAL FLUID; 320' OF TOTAL FLUID</u>	Insurance
TOOL SAMPLE: <u>VSOCGM - 2%O 3%G 95%M</u>	Total

Time Set Packer(s) 11:41 P.M. ^{A.M.}/_{P.M.} Time Started Off Bottom 2:41 A.M. ^{A.M.}/_{P.M.} Maximum Temperature 97

Initial Hydrostatic Pressure..... (A) 1167 P.S.I.
Initial Flow Period..... Minutes 30 (B) 62 P.S.I. to (C) 102 P.S.I.
Initial Closed In Period..... Minutes 45 (D) 560 P.S.I.
Final Flow Period..... Minutes 45 (E) 94 P.S.I. to (F) 121 P.S.I.
Final Closed In Period..... Minutes 60 (G) 560 P.S.I.
Final Hydrostatic Pressure..... (H) 1153 P.S.I.

Diamond Testing shall not be liable for damages of any kind to the property or personnel of the one for whom a test is made or for any loss suffered or sustained, directly or indirectly, through the use of its equipment, or its statement or opinion concerning the result of any test. Tools lost or damaged in the hole shall be paid for at cost by the party for whom the test is made.



Hoisington, Kansas

JEFF BROWN
620-617-6373
brown.dtlc@gmail.com

General Information

Company Name NOBLE PETROLEUM,INC

Test Information

Contact
Well Name
Unique Well ID
Surface Location
Field
Well Operator
Test Type
Formation
Well Fluid Type
Test Purpose (AEUB)
Start Test Date
Start Test Time
Final Test Date
Final Test Time
Job Number
Representative
Prepared By
Report Date

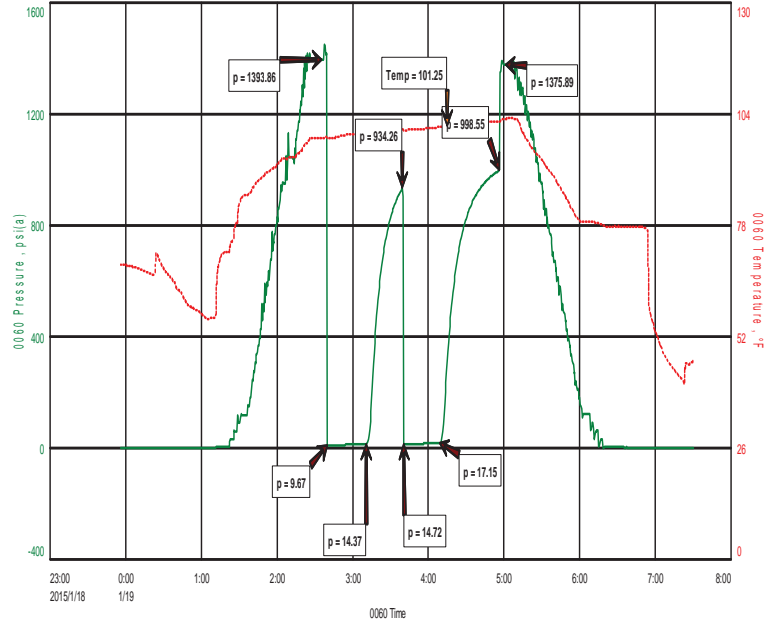
JAY ABLAH
SCULLY-CORP #1
DST2 - VIOLA - 2893 - 2934
SEC-27-18S-2E MARION, CNTY,KS
WILDCAT
NOBLE PETROLEUM,INC
Drill Stem Test
DST2 - VIOLA - 2893 - 2934
01 Oil

2015/01/18
16:22:00
2015/01/18
23:56:00
JB24
JEFF BROWN
JEFF BROWN
2015/01/18

NOBLE PETROLEUM,INC
 DST2 - VIOLA - 2893 - 2934
 Start Test Date: 2015/01/18
 Final Test Date: 2015/01/18

SCULLY-CORP #1
 Formation: DST2 - VIOLA - 2893 - 2934
 Pool: WILDCAT
 Job Number: JB24

SCULLY-CORP #1



FLUID RECOVERY

FLUID RECOVERY; 3' OF MUD WITH OIL SPOTS
1' OF FREE OIL

TOOL SAMPLE; MUD WITH A SCUM OF OIL



DIAMOND TESTING
 P.O. Box 157
 HOISINGTON, KANSAS 67544
 (800) 542-7313

TIME ON: 16:22
 TIME OFF: 23:56

DRILL-STEM TEST TICKET
 FILE: SCULLY-CORP #1 DST2

Company NOBLE PETROLEUM, INC Lease & Well No. SCULLY-CORP #1
 Contractor C & G DRILLING, INC Charge to NOBLE PETROLEUM, INC
 Elevation 1369 KB Formation VIOLA Effective Pay _____ Ft. Ticket No. JB24
 Date 1-18-15 Sec. 27 Twp. _____ 18 S Range _____ 2 W County MARION State KANSAS
 Test Approved By FRANK MIZE Diamond Representative JEFF BROWN

Formation Test No. 2 Interval Tested from 2893 ft. to 2934 ft. Total Depth 2934 ft.
 Packer Depth 2888 ft. Size 6 3/4 in. Packer depth _____ ft. Size 6 3/4 in.
 Packer Depth 2893 ft. Size 6 3/4 in. Packer depth _____ ft. Size 6 3/4 in.

Depth of Selective Zone Set _____
 Top Recorder Depth (Inside) 2874 ft. Recorder Number 0060 Cap. 5,000 P.S.I.
 Bottom Recorder Depth (Outside) 2897 ft. Recorder Number 5517 Cap. 5000 P.S.I.
 Below Straddle Recorder Depth _____ ft. Recorder Number _____ Cap. _____ P.S.I.

Mud Type CHEMICAL Viscosity 50 Drill Collar Length 239 ft. I.D. 2 1/4 in.
 Weight 9.3 Water Loss 9.2 cc. Weight Pipe Length 0 ft. I.D. 2 7/8 in.
 Chlorides 850 P.P.M. Drill Pipe Length 2622 ft. I.D. 3 1/2 in.
 Jars: Make STERLING Serial Number 11 Test Tool Length 32 ft. Tool Size 3 1/2-IF in.
 Did Well Flow? NO Reversed Out NO Anchor Length 41 ft. Size 4 1/2-FH in.
 Main Hole Size 7 7/8 Tool Joint Size 4 1/2 XH in. Surface Choke Size 1 in. Bottom Choke Size 5/8 in.

Blow: 1st Open: WEAK SURFACE BLOW DIED IN 20 MIN (NObb)
 2nd Open: DEAD NO BLOW (NObb)

Recovered 3 ft. of MUD WITH OIL SPOTS
 Recovered 1 ft. of FREE OIL
 Recovered _____ ft. of _____
 Recovered _____ ft. of _____
 Recovered _____ ft. of _____
 Recovered _____ ft. of _____
 Remarks: TOTAL FLUID; 4' OF TOTAL FLUID
 Price Job _____
 Other Charges _____
 Insurance _____
 TOOL SAMPLE: MUD WITH A SCUM OF OIL
 Total _____

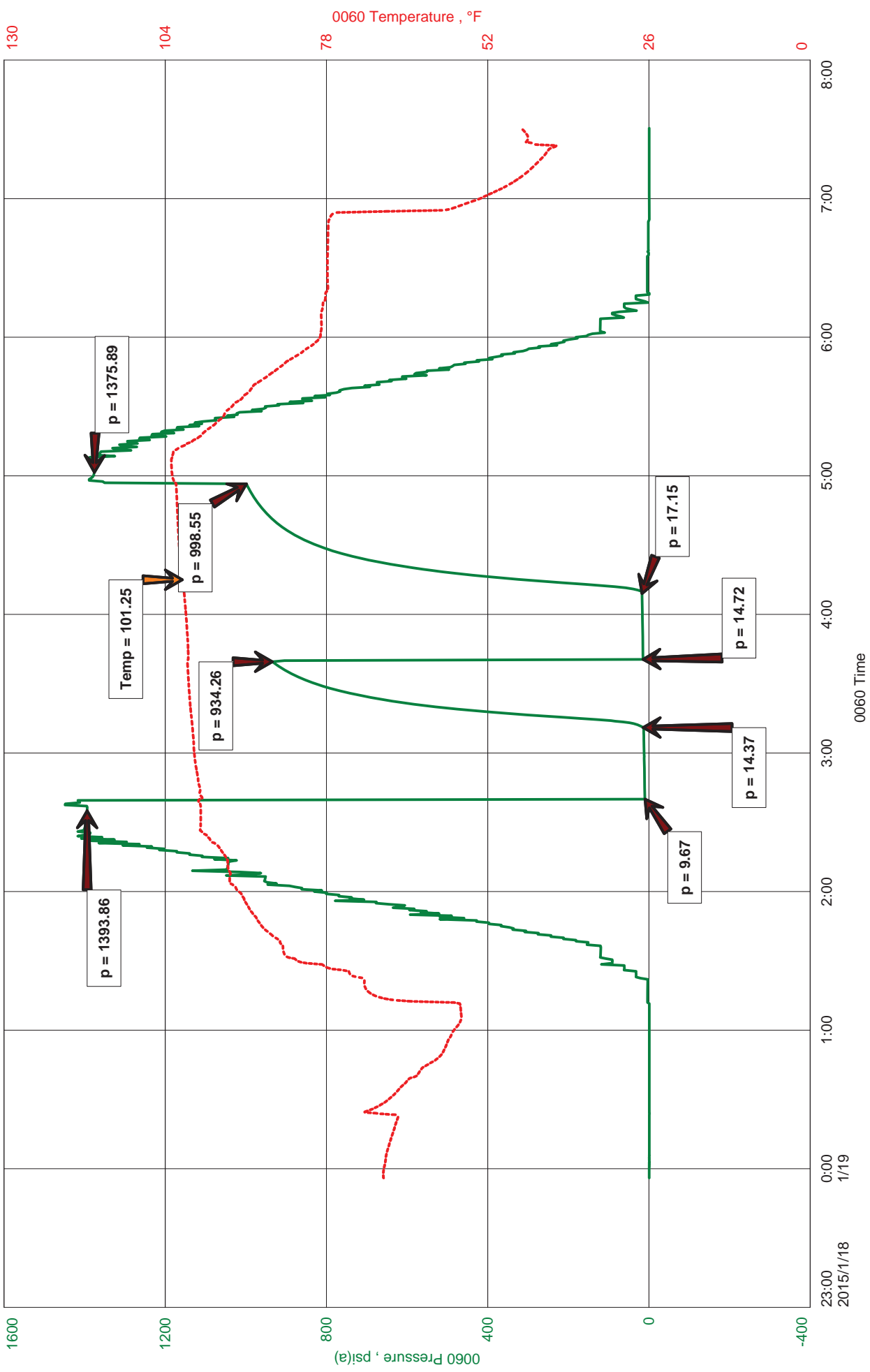
Time Set Packer(s) 7:06 P.M. A.M. _____ P.M. _____ Time Started Off Bottom 9:21 P.M. A.M. _____ P.M. _____ Maximum Temperature 101
 Initial Hydrostatic Pressure..... (A) 1394 P.S.I.
 Initial Flow Period..... Minutes 30 (B) 10 P.S.I. to (C) 14 P.S.I.
 Initial Closed In Period..... Minutes 30 (D) 934 P.S.I.
 Final Flow Period..... Minutes 30 (E) 15 P.S.I. to (F) 17 P.S.I.
 Final Closed In Period..... Minutes 45 (G) 999 P.S.I.
 Final Hydrostatic Pressure..... (H) 1376 P.S.I.

Diamond Testing shall not be liable for damages of any kind to the property or personnel of the one for whom a test is made or for any loss suffered or sustained, directly or indirectly, through the use of its equipment, or its statement or opinion concerning the result of any test. Tools lost or damaged in the hole shall be paid for at cost by the party for whom the test is made.

NOBLE PETROLEUM, INC
DST2 - VIOLA - 2893 - 2934
Start Test Date: 2015/01/18
Final Test Date: 2015/01/18

SCULLY-CORP #1
Formation: DST2 - VIOLA - 2893 - 2934
Pool: WILDCAT
Job Number: JB24

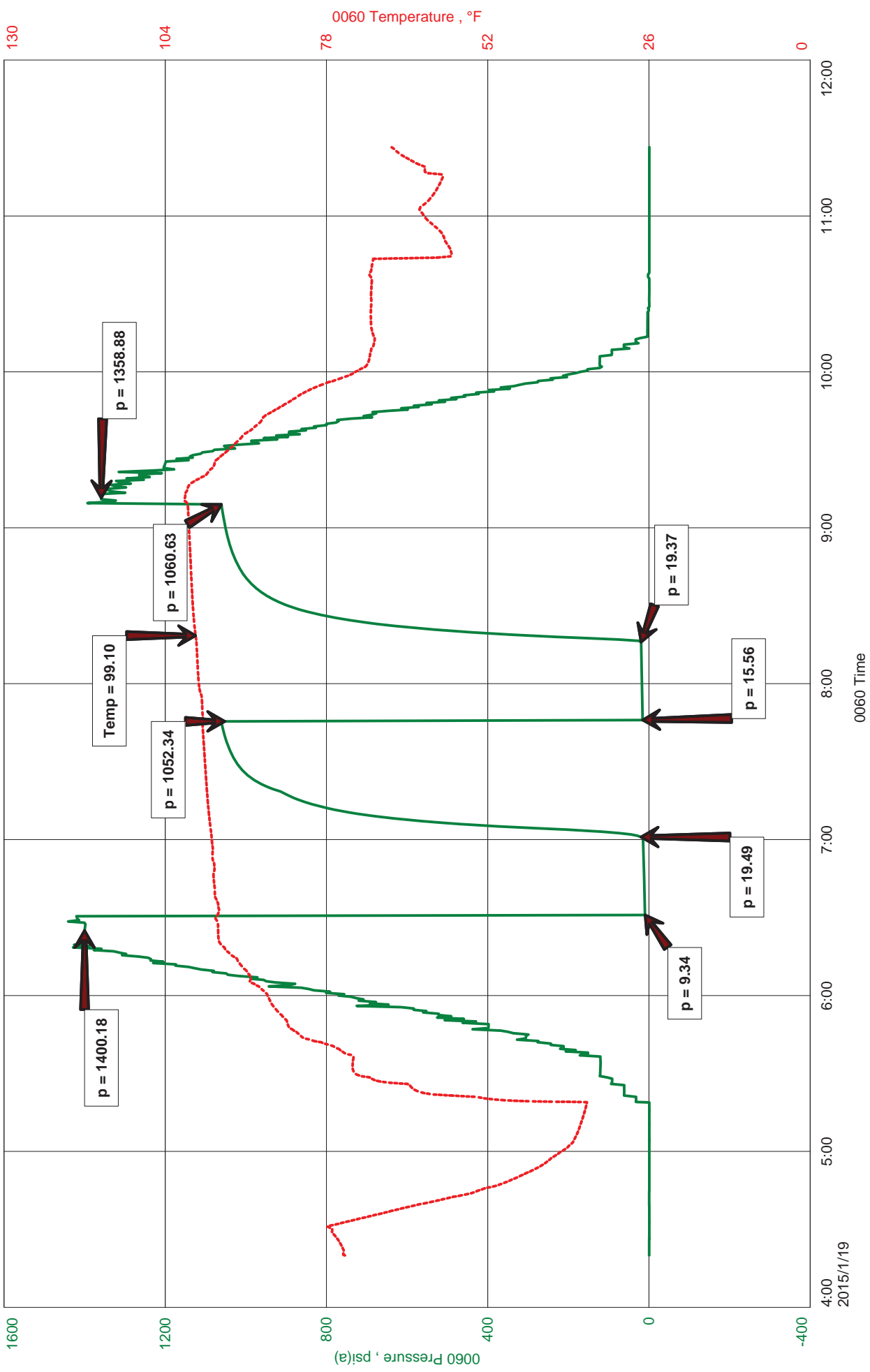
SCULLY-CORP #1



NOBLE PETROLEUM, INC
DST3 - VIOLA - 2902 - 2938
Start Test Date: 2015/01/19
Final Test Date: 2015/01/19

SCULLY-CORP #1
Formation: DST3 - VIOLA - 2902 - 2938
Pool: WILDCAT
Job Number: JB25

SCULLY-CORP #1





Hoisington, Kansas

JEFF BROWN
620-617-6373
brown.dtlc@gmail.com

General Information

Company Name NOBLE PETROLEUM,INC

Test Information

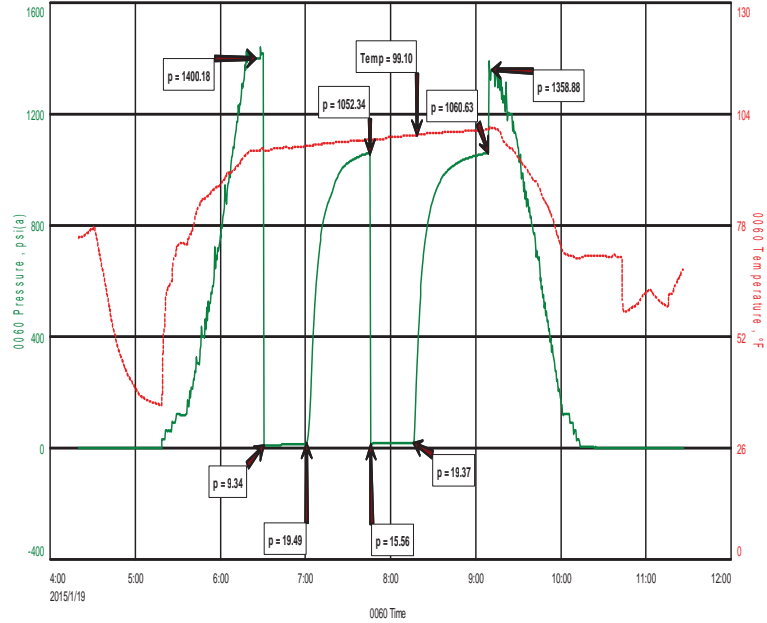
Contact
Well Name
Unique Well ID
Surface Location
Field
Well Operator
Test Type
Formation
Well Fluid Type
Test Purpose (AEUB)
Start Test Date
Start Test Time
Final Test Date
Final Test Time
Job Number
Representative
Prepared By
Report Date

JAY ABLAH
SCULLY-CORP #1
DST3 - VIOLA - 2902 - 2938
SEC- 27-18S-2E- MARION,CNTY,KS
WILDCAT
NOBLE PETROLEUM,INC
Drill Stem Test
DST3 - VIOLA - 2902 - 2938
01 Oil
Initial Test
2015/01/19
04:20:00
2015/01/19
11:27:00
JB25
JEFF BROWN
JEFF BROWN
2015/01/19

NOBLE PETROLEUM,INC
 DST3 - VIOLA - 2902 - 2938
 Start Test Date: 2015/01/19
 Final Test Date: 2015/01/19

SCULLY-CORP #1
 Formation: DST3 - VIOLA - 2902 - 2938
 Pool: WILDCAT
 Job Number: JB25

SCULLY-CORP #1



FLUID RECOVERY

TOTAL FLUID; 12' VSOCMW 2%O 10%M 88%W
1' FREE OIL

TOOL SAMPLE; VSOCMW 2%O 10%M 88%W



DIAMOND TESTING
P.O. Box 157
HOISINGTON, KANSAS 67544
(800) 542-7313
DRILL-STEM TEST TICKET
FILE: SCULLY-CORP #1 DST3

TIME ON: 04:20
TIME OFF: 11:27

Company NOBLE PETROLEUM, INC Lease & Well No. SCULLY-CORP #1
Contractor C & G DRILLING, INC Charge to NOBLE PETROLEUM, INC
Elevation 1369 KB Formation VIOLA Effective Pay _____ Ft. Ticket No. JB25
Date 1-19-15 Sec. 27 Twp. _____ 18 S Range 2 E W County MARION State KANSAS
Test Approved By FRANK MIZE Diamond Representative JEFF BROWN

Formation Test No. 3 Interval Tested from 2902 ft. to 2938 ft. Total Depth 2938 ft.
Packer Depth 2897 ft. Size 6 3/4 in. Packer depth _____ ft. Size 6 3/4 in.
Packer Depth 2902 ft. Size 6 3/4 in. Packer depth _____ ft. Size 6 3/4 in.

Depth of Selective Zone Set _____

Top Recorder Depth (Inside) 2883 ft. Recorder Number 0060 Cap. 5,000 P.S.I.
Bottom Recorder Depth (Outside) 2906 ft. Recorder Number 5517 Cap. 5000 P.S.I.
Below Straddle Recorder Depth _____ ft. Recorder Number _____ Cap. _____ P.S.I.

Mud Type CHEMICAL Viscosity 50 Drill Collar Length 239 ft. I.D. 2 1/4 in.
Weight 9.3 Water Loss 9.2 cc. Weight Pipe Length 0 ft. I.D. 2 7/8 in.
Chlorides 850 P.P.M. Drill Pipe Length 2631 ft. I.D. 3 1/2 in.
Jars: Make STERLING Serial Number 11 Test Tool Length 32 ft. Tool Size 3 1/2-IF in.
Did Well Flow? NO Reversed Out NO Anchor Length 36 ft. Size 4 1/2-FH in.
Main Hole Size 7 7/8 Tool Joint Size 4 1/2 XH in. Surface Choke Size 1 in. Bottom Choke Size 5/8 in.

Blow: 1st Open: WEAK BLOW BUILT TO 1/2 IN (NObb)
2nd Open: DEAD NO BLOW (NObb)

Recovered <u>12</u> ft. of <u>VSOCMW 2%O 10%M 88%W</u>	Price Job Other Charges Insurance Total
Recovered <u>1</u> ft. of <u>FREE OIL</u>	
Recovered _____ ft. of _____	
Recovered _____ ft. of _____	
Recovered _____ ft. of _____	
Recovered _____ ft. of _____	
Recovered _____ ft. of _____	
Remarks: <u>TOTAL FLUID; 13' OF TOTAL FLUID</u>	
TOOL SAMPLE: <u>VSOCMW 2%O 10%M 88%W</u>	

Time Set Packer(s) 6:31 A.M. A.M. P.M. Time Started Off Bottom 9:01 A.M. A.M. P.M. Maximum Temperature 99

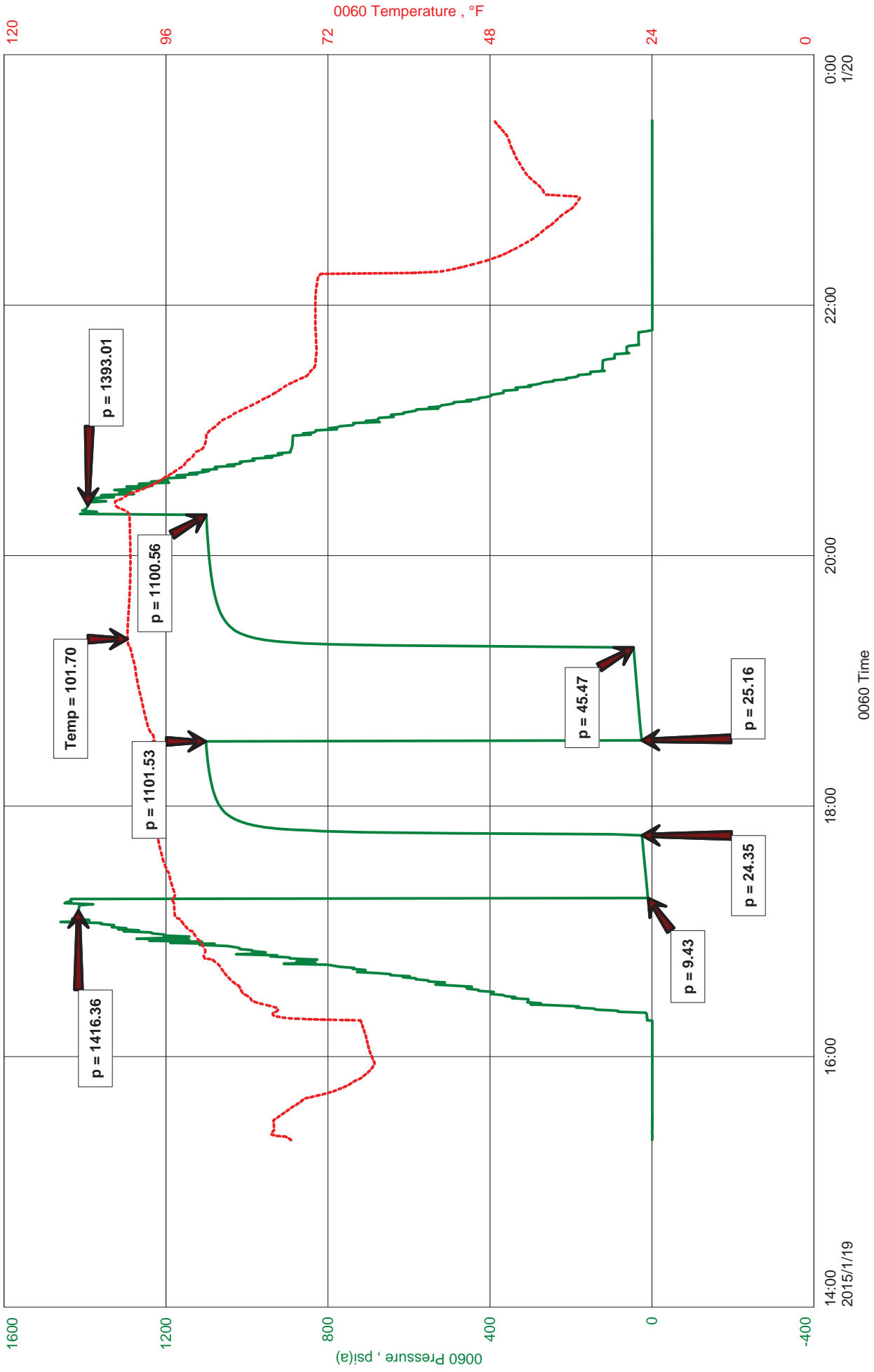
Initial Hydrostatic Pressure..... (A) 1400 P.S.I.
Initial Flow Period..... Minutes 30 (B) 9 P.S.I. to (C) 19 P.S.I.
Initial Closed In Period..... Minutes 45 (D) 1052 P.S.I.
Final Flow Period..... Minutes 30 (E) 16 P.S.I. to (F) 19 P.S.I.
Final Closed In Period..... Minutes 45 (G) 1061 P.S.I.
Final Hydrostatic Pressure..... (H) 1359 P.S.I.

Diamond Testing shall not be liable for damages of any kind to the property or personnel of the one for whom a test is made or for any loss suffered or sustained, directly or indirectly, through the use of its equipment, or its statement or opinion concerning the result of any test. Tools lost or damaged in the hole shall be paid for at cost by the party for whom the test is made.

NOBLE PETROLEUM, INC
DST 4 - VILOA - 2931 - 2941
Start Test Date: 2015/01/19
Final Test Date: 2015/01/19

SCULLY-CORP #1
Formation: DST 4 - VILOA - 2931 - 2941
Pool: WILDCAT
Job Number: JB26

SCULLY-CORP #1





Hoisington, Kansas

JEFF BROWN
620-617-6373
brown.dtlc@gmail.com

General Information

Company Name NOBLE PETROLEUM,INC

Test Information

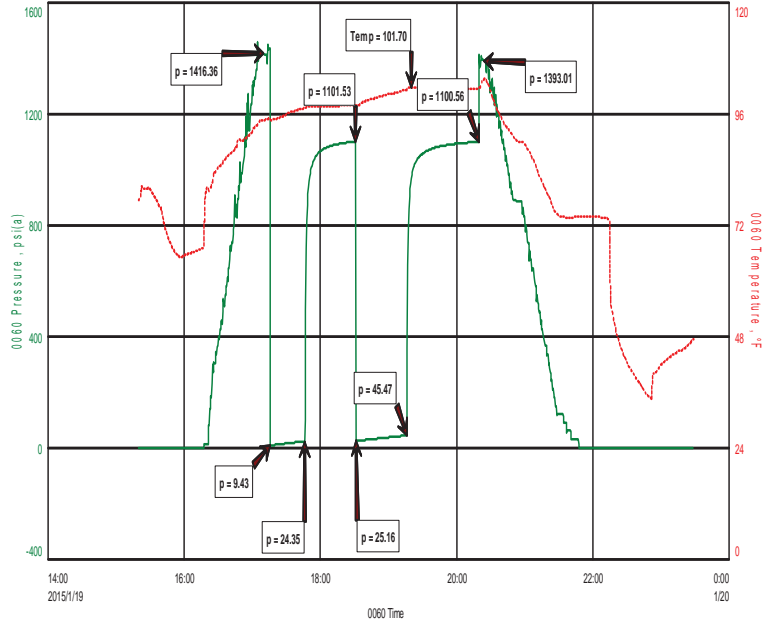
Contact
Well Name
Unique Well ID
Surface Location
Field
Well Operator
Test Type
Formation
Well Fluid Type
Test Purpose (AEUB)
Start Test Date
Start Test Time
Final Test Date
Final Test Time
Job Number
Representative
Prepared By
Report Date

JAY ABLAH
SCULLY-CORP #1
DST 4 - VILOA - 2931 - 2941
SEC- 27-18S-2E MARION, CNTY, KS
WILDCAT
NOBLE PETROLEUM,INC
Drill Stem Test
DST 4 - VILOA - 2931 - 2941
01 Oil
Initial Test
2015/01/19
15:20:00
2015/01/19
23:30:00
JB26
JEFF BROWN
JEFF BROWN
2015/01/19

NOBLE PETROLEUM,INC
 DST 4 - VILOA - 2931 - 2941
 Start Test Date: 2015/01/19
 Final Test Date: 2015/01/19

SCULLY-CORP #1
 Formation: DST 4 - VILOA - 2931 - 2941
 Pool: WILDCAT
 Job Number: JB26

SCULLY-CORP #1



FLUID RECOVERY

FLUID RECOVERY; 63' VSOCMW 2%O 5%M 93%W
2' FREE OIL

RW .9 @ 58 DEG
45PPM

TOTAL FLUID - 65' OF TOTAL FLUID

TOOL SAMPLE; VSOCMW 2%O 5%M 93%W



DIAMOND TESTING
P.O. Box 157
HOISINGTON, KANSAS 67544
(800) 542-7313

TIME ON: 15:20
TIME OFF: 23:30

DRILL-STEM TEST TICKET
FILE: SCULLY-CORP #1 DST4

Company NOBLE PETROLEUM, INC Lease & Well No. SCULLY-CORP #1
Contractor C & G DRILLING, INC Charge to NOBLE PETROLEUM, INC
Elevation 1369 KB Formation VIOLA Effective Pay _____ Ft. Ticket No. JB26
Date 1-19-15 Sec. 27 Twp. _____ 18 S Range 2 E W County MARION State KANSAS
Test Approved By FRANK MIZE Diamond Representative JEFF BROWN

Formation Test No. 4 Interval Tested from 2931 ft. to 2941 ft. Total Depth 2941 ft.
Packer Depth 2926 ft. Size 6 3/4 in. Packer depth _____ ft. Size 6 3/4 in.
Packer Depth 2931 ft. Size 6 3/4 in. Packer depth _____ ft. Size 6 3/4 in.

Depth of Selective Zone Set _____

Top Recorder Depth (Inside) 2912 ft. Recorder Number 0060 Cap. 5,000 P.S.I.
Bottom Recorder Depth (Outside) 2933 ft. Recorder Number 5517 Cap. 5000 P.S.I.
Below Straddle Recorder Depth _____ ft. Recorder Number _____ Cap. _____ P.S.I.

Mud Type CHEMICAL Viscosity 50 Drill Collar Length 239 ft. I.D. 2 1/4 in.
Weight 9.3 Water Loss 9.2 cc. Weight Pipe Length 0 ft. I.D. 2 7/8 in.
Chlorides 850 P.P.M. Drill Pipe Length 2660 ft. I.D. 3 1/2 in.
Jars: Make STERLING Serial Number 11 Test Tool Length 32 ft. Tool Size 3 1/2-IF in.
Did Well Flow? NO Reversed Out NO Anchor Length 10 ft. Size 4 1/2-FH in.
Main Hole Size 7 7/8 Tool Joint Size 4 1/2 XH in. Surface Choke Size 1 in. Bottom Choke Size 5/8 in.

Blow: 1st Open: WEAK BLOW BUILT TO 1-1/2 IN (NObb)
2nd Open: WEAK BLOW BUILT TO 1 IN (NObb)

Recovered <u>63</u> ft. of <u>VSOCMW 2%O 5%M 93%W</u>	
Recovered <u>2</u> ft. of <u>FREE OIL</u>	
Recovered _____ ft. of _____	
Recovered _____ ft. of <u>RW .9@58 DEG</u>	
Recovered _____ ft. of <u>45,000 PPM</u>	Price Job
Recovered _____ ft. of _____	Other Charges
Remarks: <u>TOTAL FLUID; 65' OF TOTAL FLUID</u>	Insurance
TOOL SAMPLE: <u>VSOCMW 2%O 5%M 93%W</u>	Total

Time Set Packer(s) 5:16 P.M. A.M. P.M. Time Started Off Bottom 8:16 P.M. A.M. P.M. Maximum Temperature 102

Initial Hydrostatic Pressure..... (A) 1416 P.S.I.
Initial Flow Period..... Minutes 30 (B) 9 P.S.I. to (C) 24 P.S.I.
Initial Closed In Period..... Minutes 45 (D) 1102 P.S.I.
Final Flow Period..... Minutes 45 (E) 25 P.S.I. to (F) 45 P.S.I.
Final Closed In Period..... Minutes 60 (G) 1101 P.S.I.
Final Hydrostatic Pressure..... (H) 1393 P.S.I.

Diamond Testing shall not be liable for damages of any kind to the property or personnel of the one for whom a test is made or for any loss suffered or sustained, directly or indirectly, through the use of its equipment, or its statement or opinion concerning the result of any test. Tools lost or damaged in the hole shall be paid for at cost by the party for whom the test is made.

810 E 7TH
 PO Box 92
 EUREKA, KS 67045
 (620) 583-5561



Cement or Acid Field Report
 Ticket No. 2113
 Foreman Steve Mead
 Camp Eureka KS

Date	Cust. ID #	Lease & Well Number	Section	Township	Range	County	State
1-13-15	1027	Scully-CORP. #1	27	185	2E	Marion	KS
Customer			Unit #	Driver	Unit #	Driver	
Noble Petroleum, Inc			105	DAVE G.			
Mailing Address			113	CHRIS B.			
8918 W. 21st. No.							
City	State	Zip Code					
Wichita	Ks	67226					

Job Type Surfacs Hole Depth 235' Slurry Vol. _____ Tubing _____
 Casing Depth 225' Set @ 235 Hole Size 12 1/4 Slurry Wt. _____ Drill Pipe _____
 Casing Size & Wt. 8 5/8 23" Cement Left in Casing 15' Water Gal/SK _____ Other _____
 Displacement 14 bbls Displacement PSI _____ Bump Plug to _____ BPM _____

Remarks: Safety Meeting. Rig up to 8 5/8 casing. Break circulation w/ Fresh water.
Mix 150 SKS Class A Cement w/ 3% Cacl2, 2% Gel + 1/4" Flo-Seal per SK.
Displace w/ 14 bbls Fresh water. Shut well in. Had thin cement to
surface, cement fall back 15' wait 2hrs. Run 1" tubing down 15'
Mix 35 SKS Class A Cement 15' to surface
Job complete Rig down

Thank you

Code	Qty or Units	Description of Product or Services	Unit Price	Total
C101	1	Pump Charge	840.00	840.00
C107	60	Mileage	3.95	237.00
C200	185 SKS	Class A Cement	15.00	2775.00
C205	520 #	3% Cacl2	.60	312.00
C206	300 #	2% Gel	.20	60.00
C209	38 #	1/4" Flo-Seal per SK	2.25	85.50
C108	8.70	Ton mileage Bulk Truck	1.35	689.04
			Sub Total	4998.54
			7.65% Sales Tax	247.29
			Total	5245.83

Authorization Witness by Duke Title Tool pusher

I agree to the payment terms and conditions of services provided on the back of this job ticket. Any amendments to payment terms must be in writing on the front of this job ticket or in the Customer's records at ELITE's office.

810 E 7TH
PO Box 92
EUREKA, KS 67045
(620) 583-5561



Cement or Acid Field Report
Ticket No. 2056
Foreman Shannon Feck
Camp Eureka, KS

API # 15-115-21490

Date	Cust. ID #	Lease & Well Number	Section	Township	Range	County	State	
1-21-15		Scolly-Corp #1	27	18S	2E	Marion	KS	
Customer Noble Petroleum, Inc			Safety Meeting SF Am CB	Unit # 104 113	Driver Alan M Chris B	Unit #	Driver	
Mailing Address 8918 W. 21 st ST N. Ste 200								
City Wichita		State KS	Zip Code 67205					

Job Type P.T.A New Well Hole Depth 3135' Slurry Vol. Tubing
 Casing Depth Hole Size 7 1/8" Slurry Wt. Drill Pipe 4 1/2"
 Casing Size & Wt. 8 3/8" surface Cement Left in Casing Water Gal/SK Other
 Displacement Displacement PSI Bump Plug to BPM

Remarks: Safety Meeting, Rig up to 4 1/2" drill pipe + set following plugs
#1 @ 3080' w/ 35 SKS
#2 @ 285' w/ 35 SKS
#3 @ 60' to surface w/ 25 SKS
#4 Rathole w/ 30 SKS
#5 mousehole w/ 20 SKS
145 SKS Total

Code	Qty or Units	Description of Product or Services	Unit Price	Total
C103	1	Pump Charge	1050.00	1050.00
C107	60	Mileage	3.95	237.00
C200	145 SKS	class "A" cement	15.00	2175.00
C108B	6.81 Ton	Ton mileage bulk Trk	1.35	551.61
			Sub Total	4013.61
			7.65% Sales Tax	166.38
Authorization <u>[Signature]</u> Title <u> </u>			Total	4179.99

Thank you
Shannon & Crew

I agree to the payment terms and conditions of services provided on the back of this job ticket. Any amendments to payment terms must be in writing on the front of this job ticket or in the Customer's records at ELITE's office.