

Garber Surveying Service, P.A.



2908 North Plum St.
Hutchinson, Kansas 67502
Phone 620 665-7032 • FAX 620 663-7401

511 North Poplar St.
Newton, Kansas 67114
Phone 316 283-5053 • FAX 316 283-5073

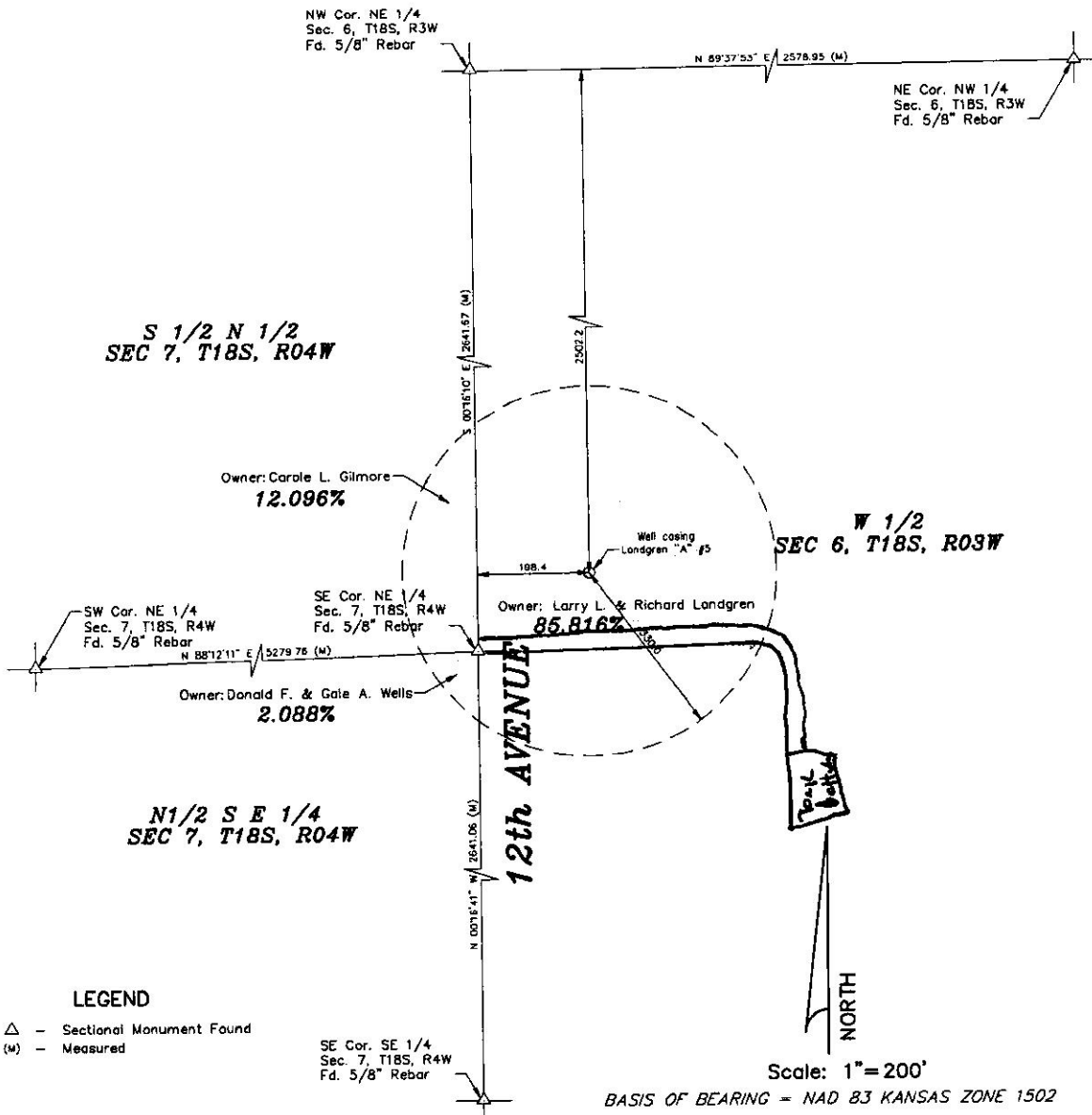
115 East Marlin
McPherson, Kansas 67460
Phone 620 241-4441 • FAX 620 241-4458

Project No. G2014-571

SURVEY FOR: JR TRENCHING

DESCRIPTION: Well Location Survey in the Northeast 1/4 Section 6, Township 18 South, Range 3 West of the 6th Principal Meridian.

SHAWNEE ROAD



DATE OF FIELD WORK: August 21, 2014

SURVEYOR'S CERTIFICATE:

I hereby certify this plat to be a true, correct and complete representation of the property described above as surveyed under my supervision.
Dated: August 29, 2014