



James C. Musgrove
Petroleum Geologist

Office (620) 588-4250 212 Main St. • P.O. Box 215 • Claflin, KS 67525 Home (620) 587-3444

GEOLOGIST'S REPORT

DRILLING TIME AND SAMPLE LOG

COMPANY LD Drilling Inc.
 LEASE Jennifer #1-9
 FIELD Betz
 LOCATION 1500' FSH - 330' FEL
 SEC 9 TWP 20^S RGE 21^W
 COUNTY Ness STATE Kansas
 CONTRACTOR LD Drilling Inc. (rig #1)
 SPUD 12/1/2014 COMP 12/10/2014
 RTD 4510 LTD 4508
 MUD UP 3600+ TYPE MUD chemical displaced

ELEVATIONS
 KB 2257
 DF _____
 GL 2252
 Measurements Are All From -KB-
 CASING SURFACE 8 5/8" 724'
 PRODUCT ION 5 1/2" 4509
 ELECTRICAL SURVEYS
By Nabors

SAMPLES SAVED FROM 3600 TO _____
 DRILLING TIME KEPT FROM 3600 TO _____
 SAMPLES EXAMINED FROM 3700 TO _____
 GEOLOGICAL SUPERVISION FROM _____ TO _____
 GEOLOGIST ON WELL Jim Musgrove

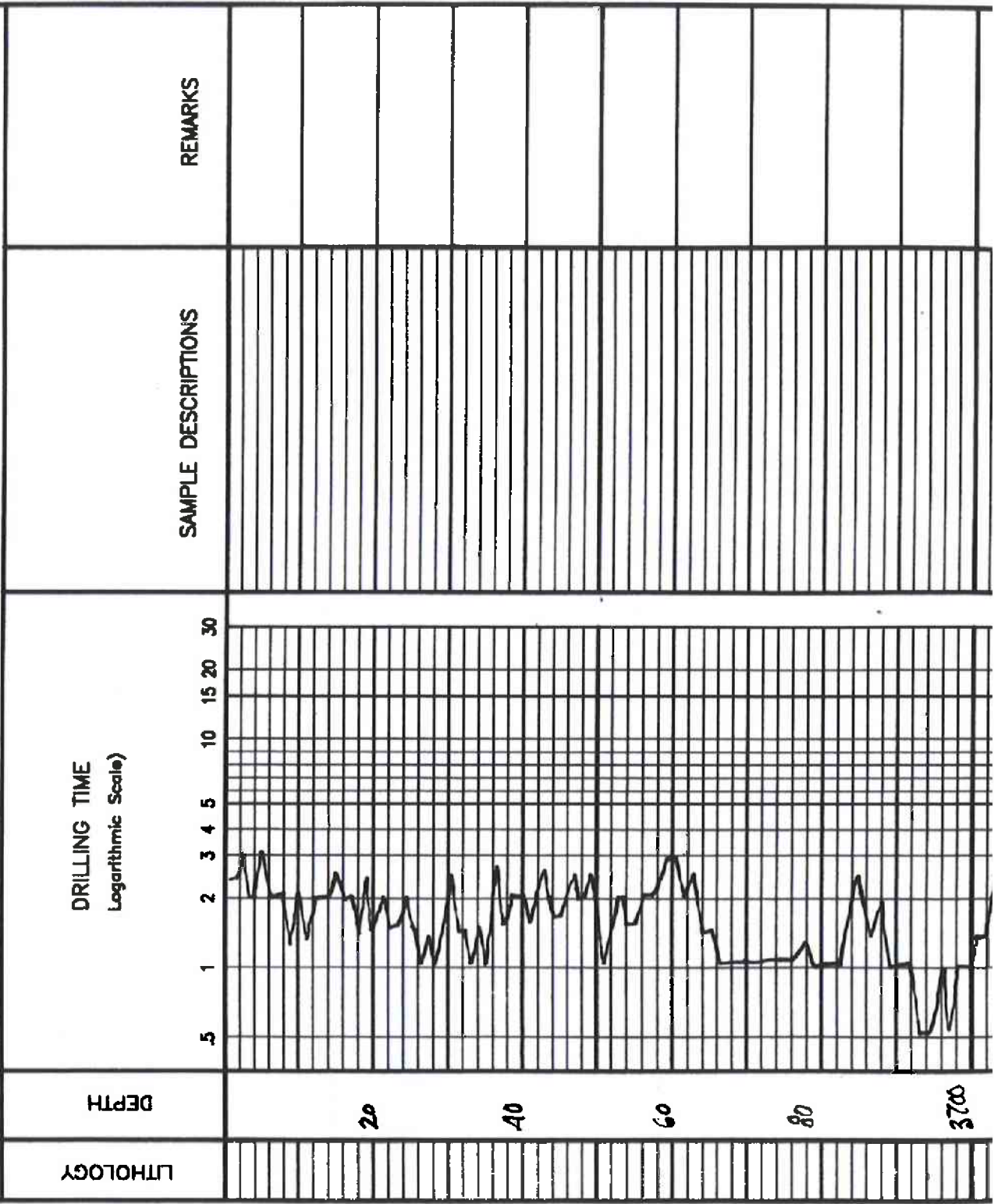
FORMATION TOPS	LOG	SAMPLES
anhydrite	1472 - 785	
Base anhydrite	1502 - 755	
Heebner	3768 - 1511	
Toronto	3785 - 1528	
Wansing	3811 - 1554	
Base Kansas City	4129 - 1872	
Marmaton	4170 - 1913	
Farr Scott	4315 - 2058	
Cherokee Shale	4336 - 2079	
Mississippian Osage	4394 - 2137	
RTD	4510 - 2253	
LTD	4508 - 2251	

REMARKS
 5 1/2" production casing was set & cemented on LD Drilling Inc, Jennifer #1-9.
 Respective logs submitted;
 James C. Musgrove
 Petroleum Geologist



LEGEND

- Anhydrite
- Soft Sandstone
- Sandstone
- Shale
- Carb sh
- Limestone
- Ool. Lime
- Chert
- Dolomite



LOG / 102

ENC /

LS; wh/gry; f-x-h; fess,
shaly
+ Jr. gym A

~ BIG CARB. sh

~ gm/gmish green sh

LS; wh/gry; f-x-h; fess
in part 3022-3
+ Jr. wh A

~ gm/gmish blue/green
sh
3022-5h

LS; wh/gry; f-x-h; fess,
shaly

33

LS; wh/gry; f-x-h; fess,
f. wh & (part)

2257 KB

32

LS; wh/gry; fess,
shaly & y wh

~ BIG CARB. sh

32

LS; wh/gry; f-x-h; fess, shaly

32

clastic arg. f. wh A

LS; wh/gry; f-x-h; fess,
good con. of m. f.

32

LS; wh/gry; f-x-h; fess

32

~ gm/msh - BIG sh

LS; tan/gry; fess,
poor con. of m. f.

32

LS; tan/gry; fess, con.
few arg. wh

