



Pioneer Energy Services

Sector Bond / Gamma Ray
CCL Log

15-159-22772-00-00

Company Primal Energy Oil & Gas, LLC
Well Skiles No. 28-1
Field Cow Creek Southeast
County Rice
State Kansas

Location

150' FSL & 150' FEL

Other Services

Sec: 28 Twp: 18 S Rge: 9 W

Elevation

Permanent Datum Ground Level Elevation 1706
Log Measured From Kelly Bushing 8 Ft. Above Perm. Datum
Drilling Measured From Kelly Bushing

K.B. 1714
D.F.
G.L. 1706

Run Number	One	
Date Survey	05/21/2014	
Date Cementing	05/16/2014	
Type Cementing Operation	Primary	
Depth Driller	3290	
Depth Logger	3258	
Logged Interval	3256 to 2000	
Casing Driller	5.5 @ TD	@
Float Collar -- D.V. Tool	////	////
Squeeze Depth	////	
Amount & Type Cement	////	
Amount & Type Admix	////	
Type Fluid In Hole	Water	
Fluid Level	Full	
Salinity PPM CL	////	
Weight lb/gal -- Vis.	////	////
Approx. Logged Cement Top	2260	
Calculated Cement Top	////	
Max. Hole Temperature	109	
Tool No.	RBT 6-6	
Spacing Recorded	3-5'	
Equipment -- Location	18 D. Hagan	Hays
Recorded By	Chuck Schmidt	
Witnessed By		

<<< Fold Here >>>

All interpretations are opinions based on inferences from electrical or other measurements and we cannot and do not guarantee the accuracy or correctness of any interpretation, and we shall not, except in the case of gross or willful negligence on our part, be liable or responsible for any loss, costs, damages, or expenses incurred or sustained by anyone resulting from any interpretation made by any of our officers, agents or employees. These interpretations are also subject to our general terms and conditions set out in our current Price Schedule.

Comments

Thank you for using Pioneer Energy Services
785.625.3858

Chase, Ks. North to F Rd.
2 East, N & W into

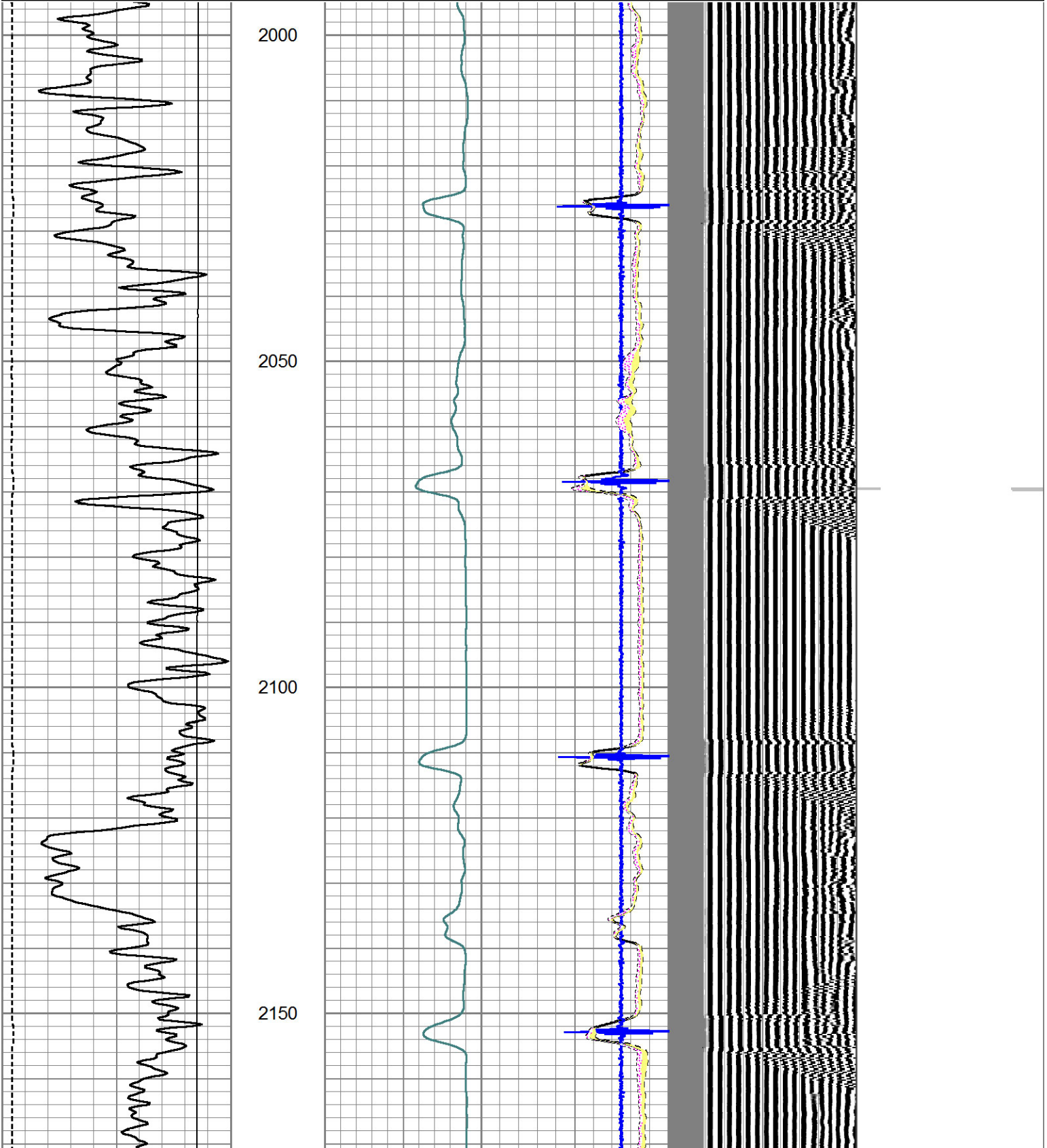
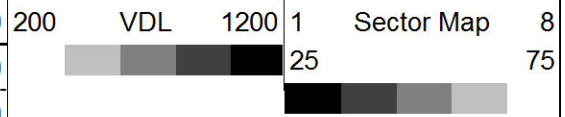


Main Pass

Database File: primalenergy_skiles_28-1.db
 Dataset Pathname: SGRCBL/pass3.1
 Presentation Format: scbl18
 Dataset Creation: Wed May 21 10:54:53 2014
 Charted by: Depth in Feet scaled 1:240

240	TT3FT (usec)	1374
0	Gamma Ray	150
LTEN		
150	GR	300

Amplitude		0	AMPAVG	150	
0	(mV)	100	0	AMPMAX	150
Amplified Amplitude		0	AMPMIN	150	
0	(mV)	20	3	CCL	-1





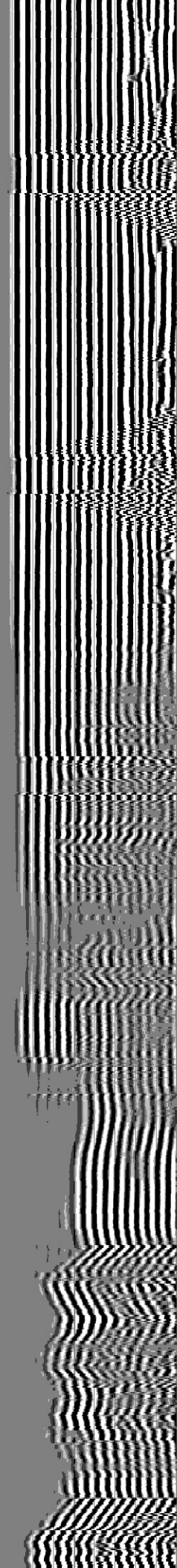
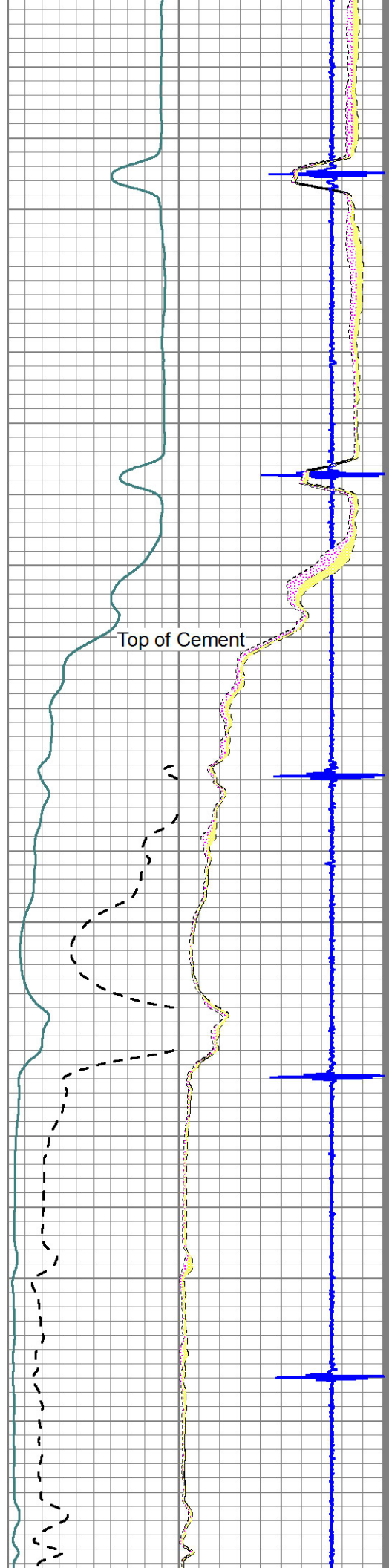
2200

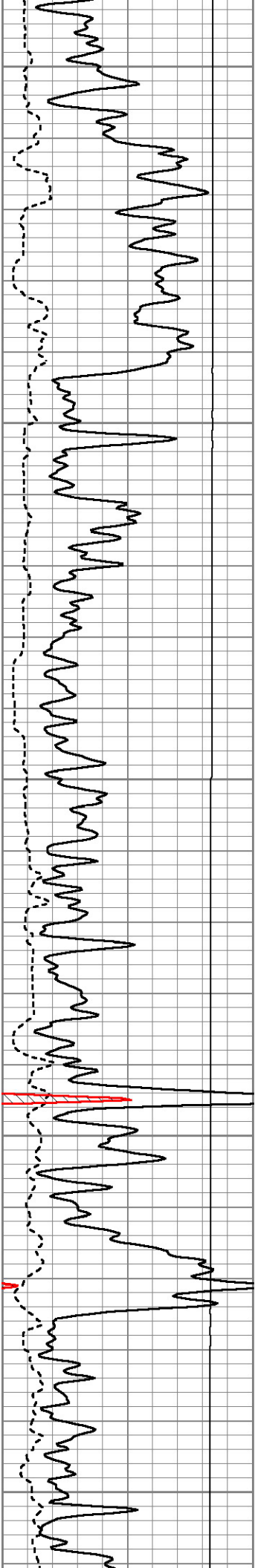
2250

2300

2350

Top of Cement





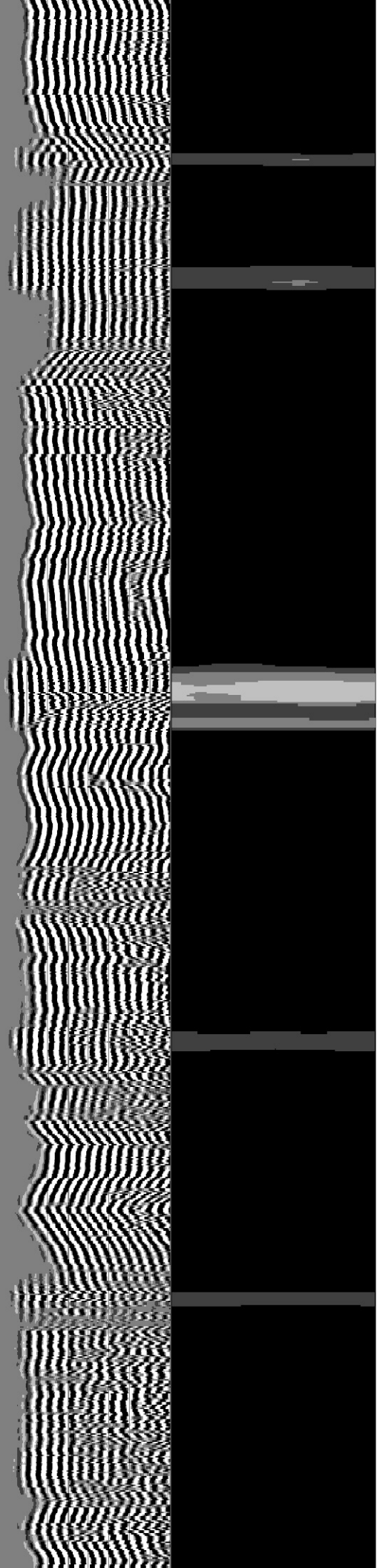
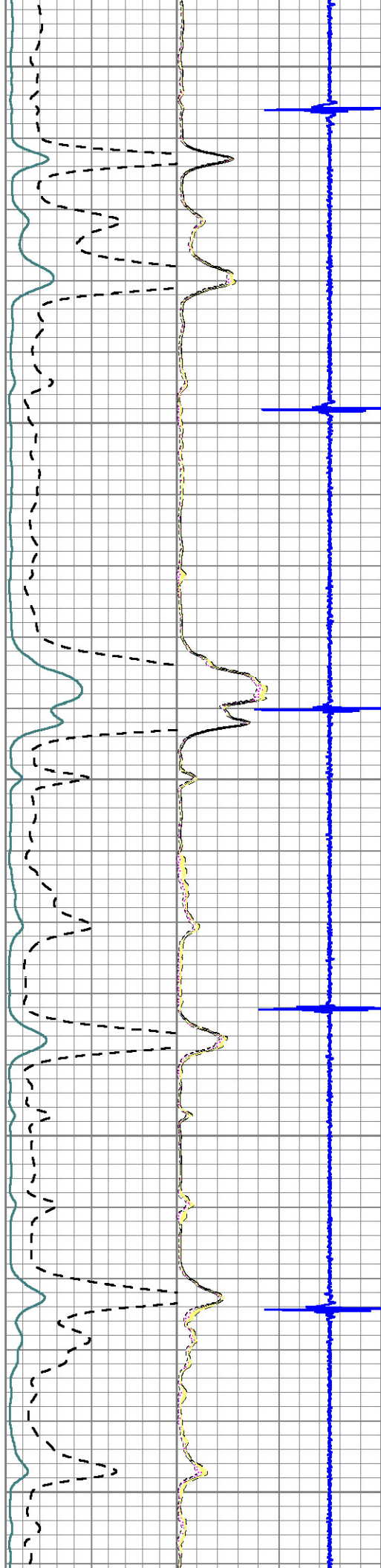
2400

2450

2500

2550

2600



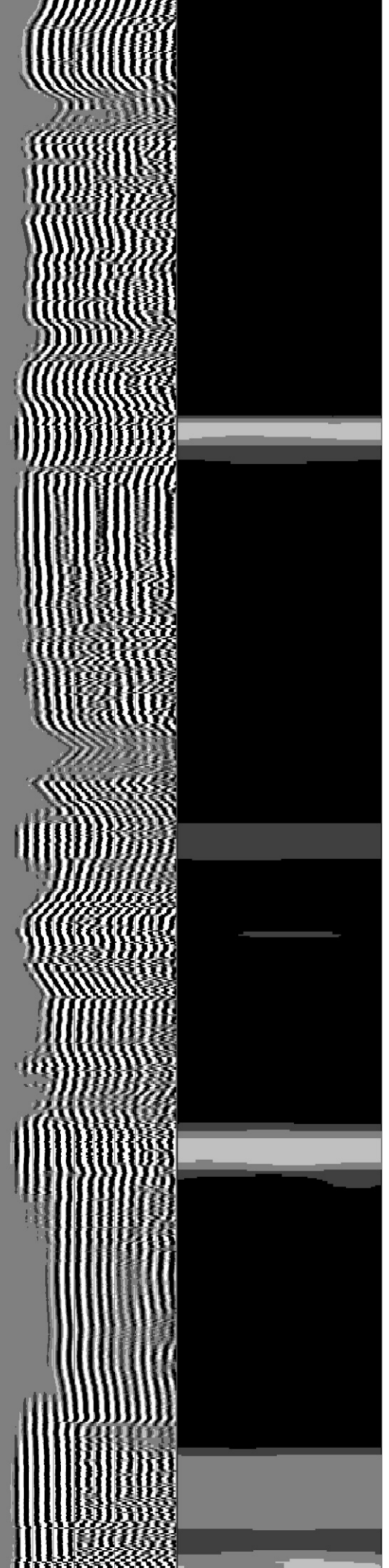
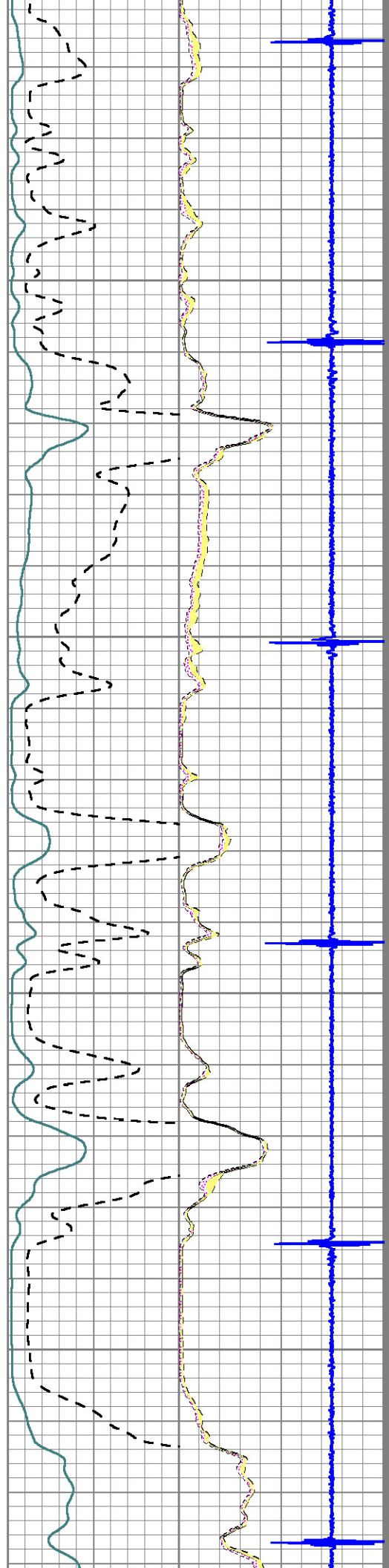


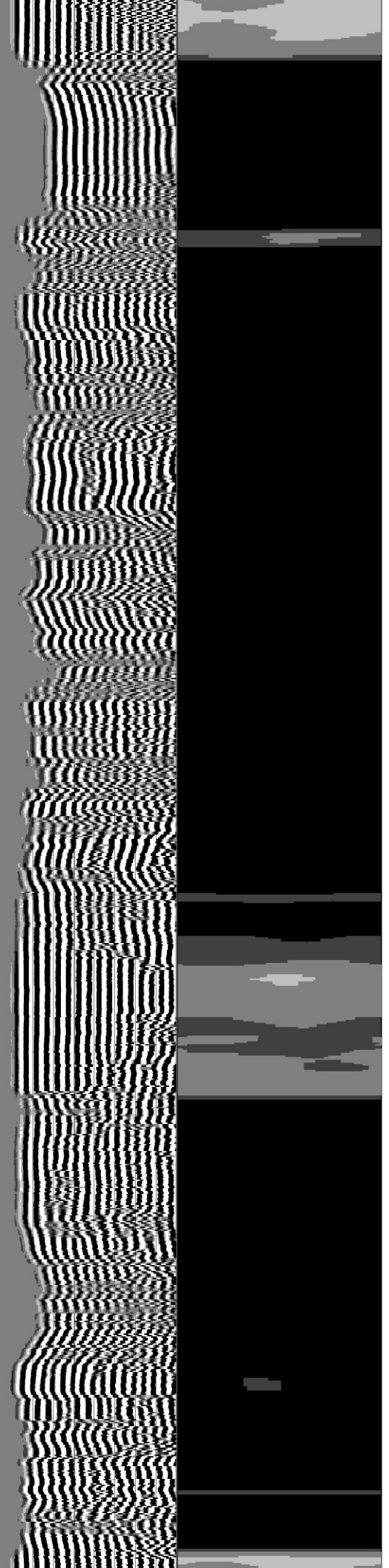
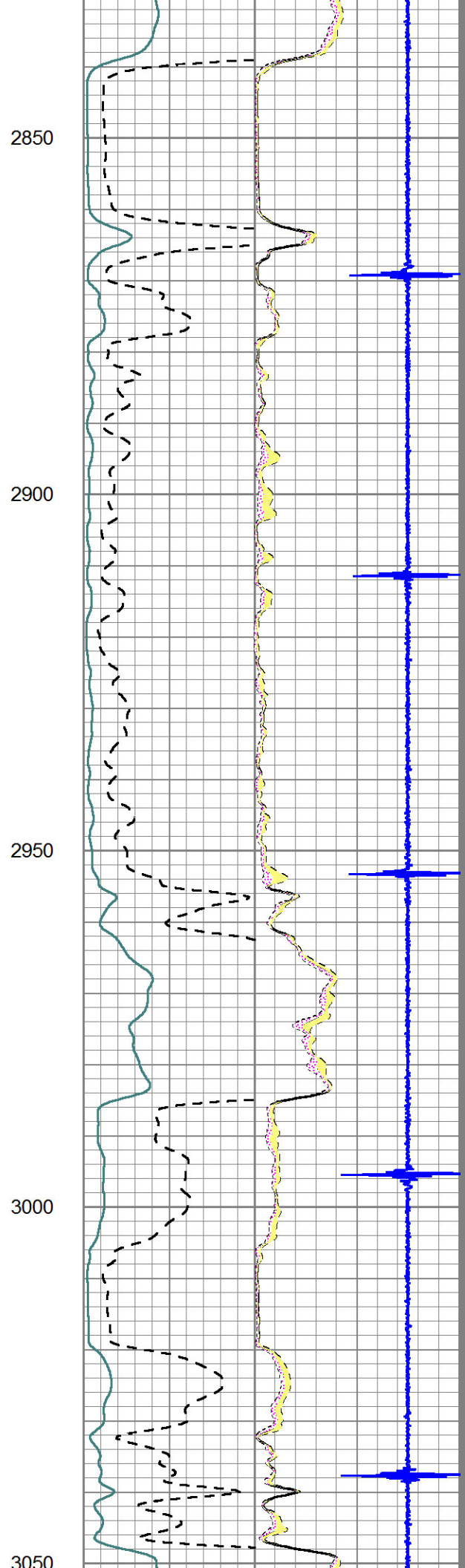
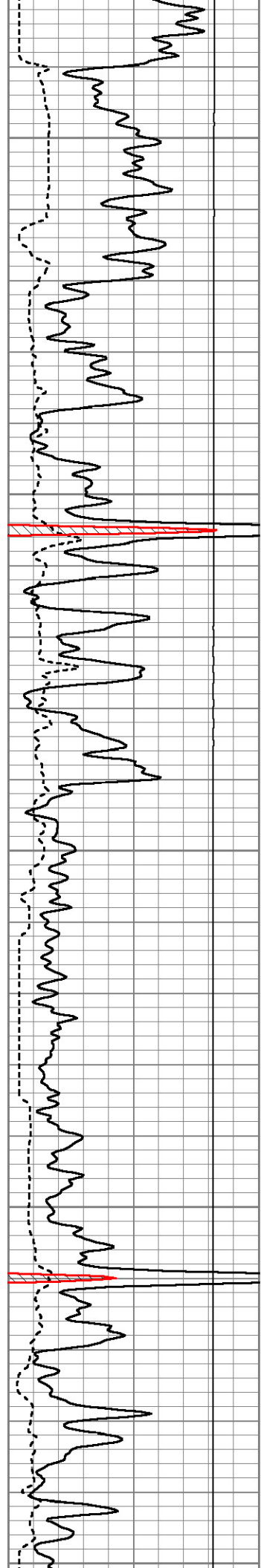
2650

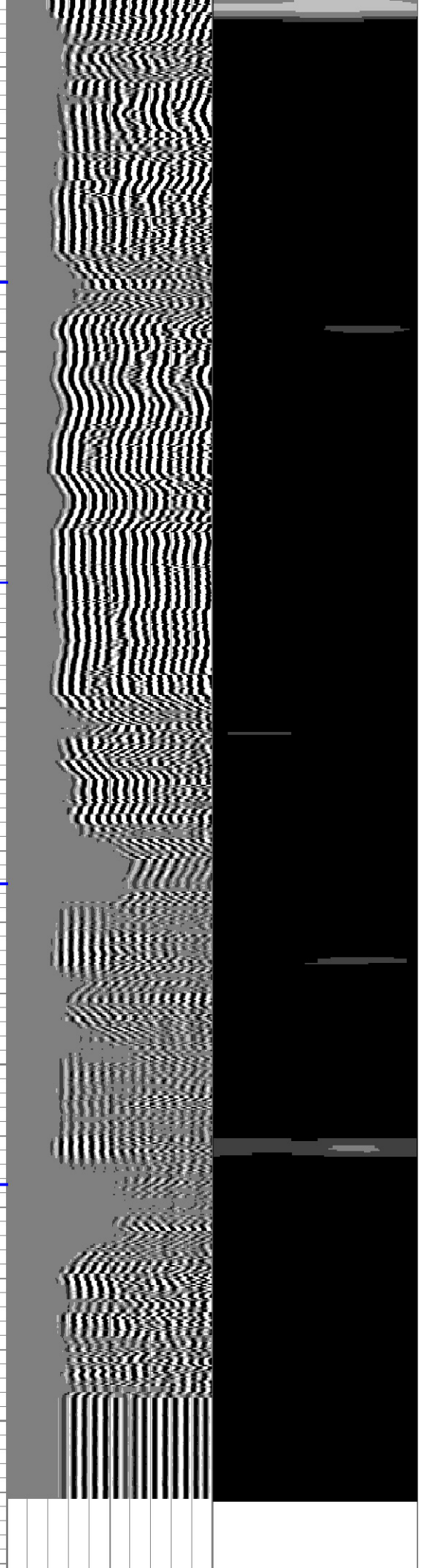
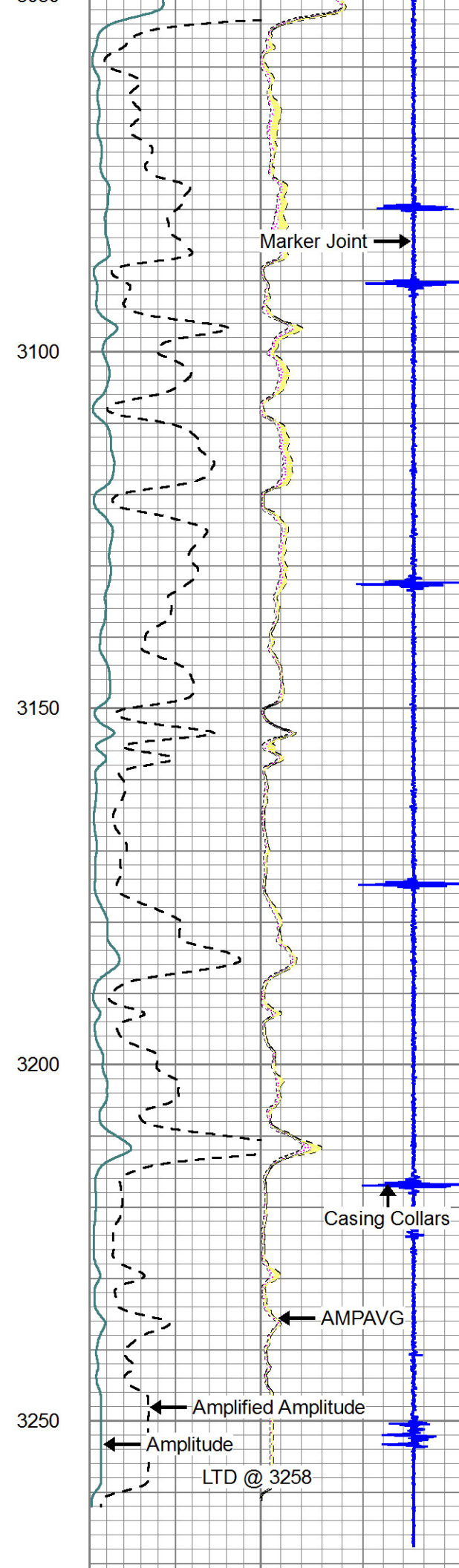
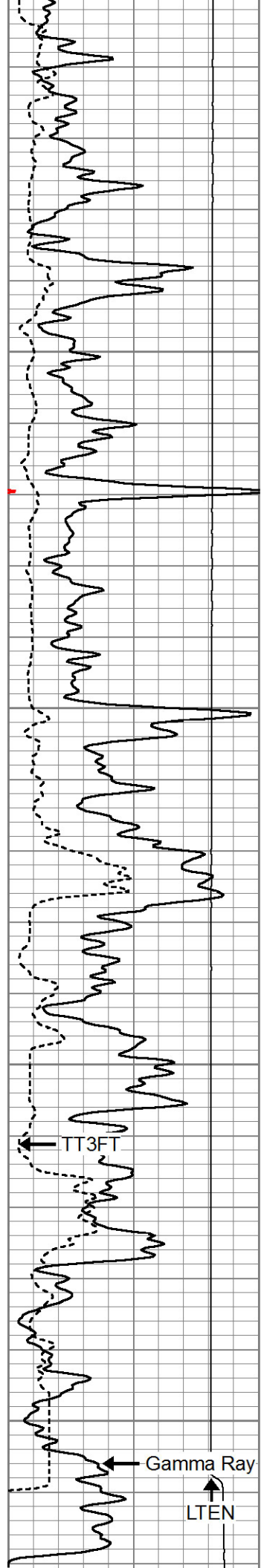
2700

2750

2800

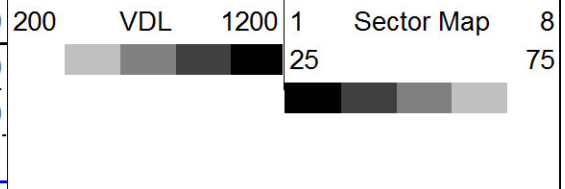






240	TT3FT (usec)	1374
0	Gamma Ray	150
LTEN		
150	GR	300

Amplitude	0	AMPAVG	150	
0 (mV)	100	0	AMPMAX	150
Amplified Amplitude	0	AMPMIN	150	
0 (mV)	20	3	CCL	-1

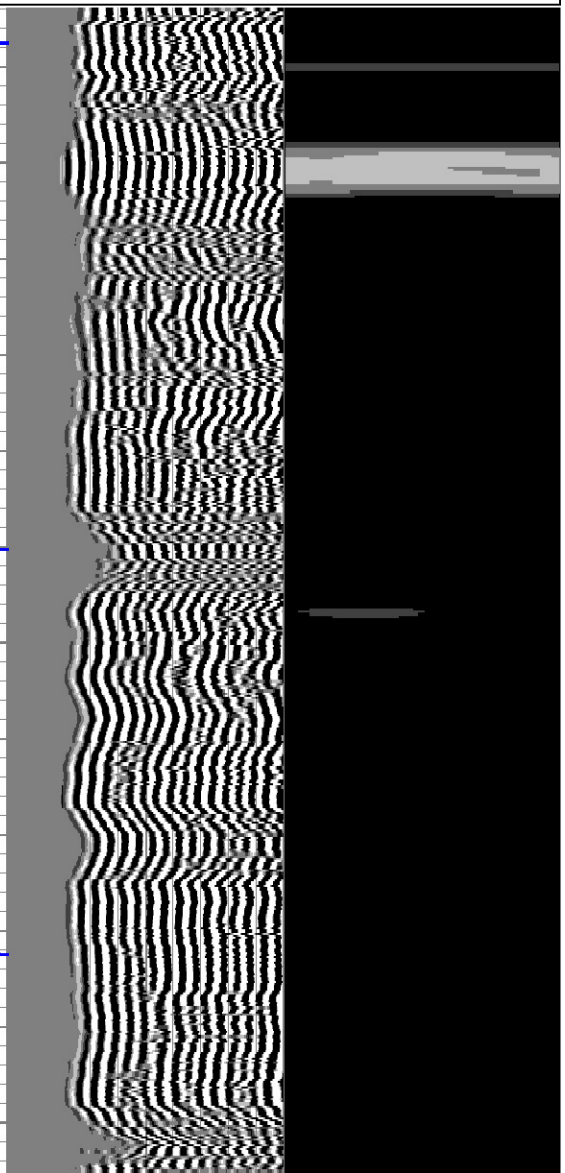
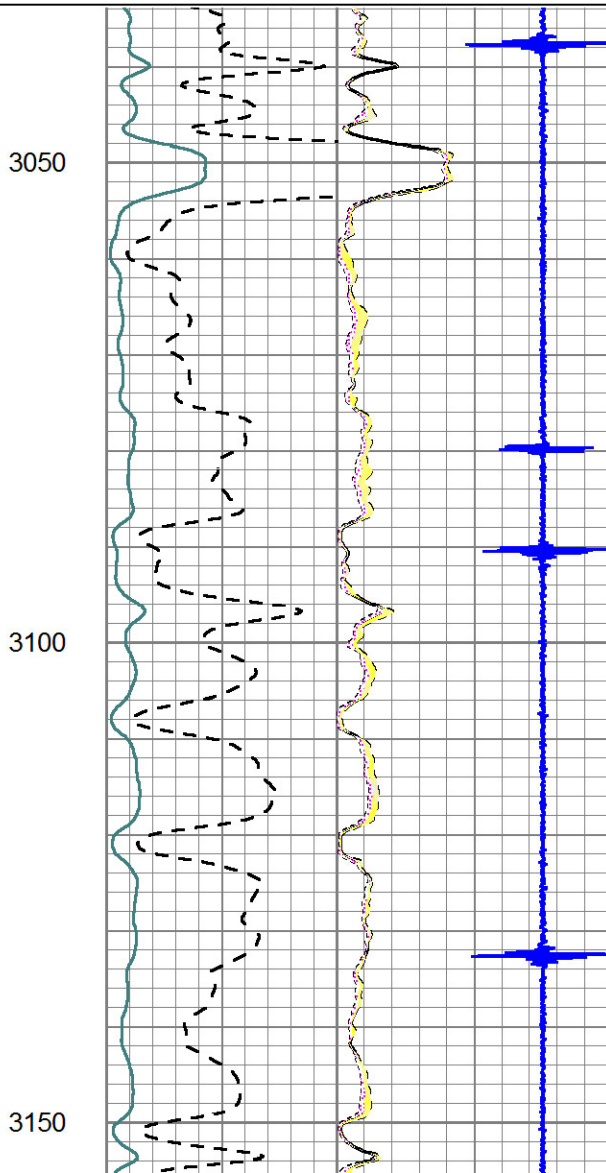
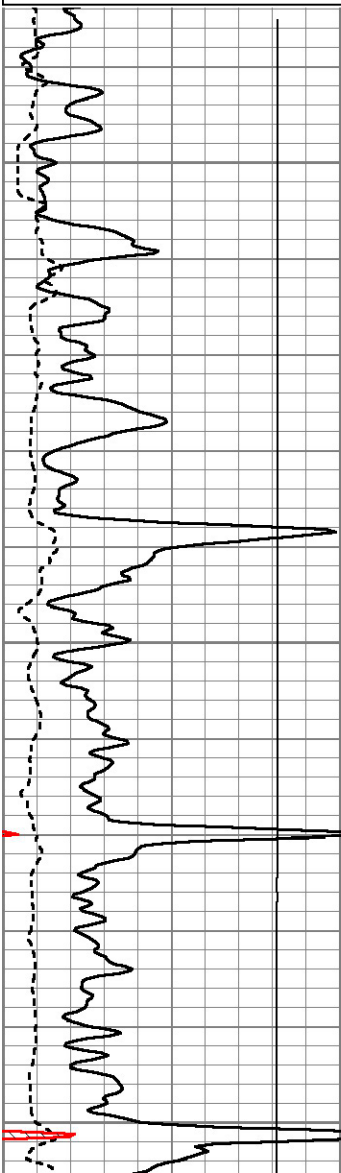
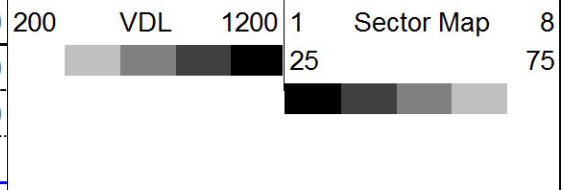


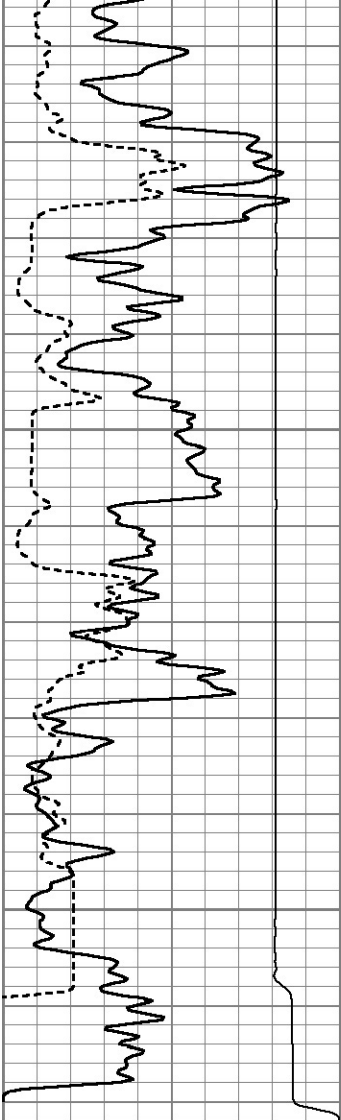
Repeat Section

Database File: primalenergy_skiles_28-1.db
 Dataset Pathname: SGRCBL/pass2
 Presentation Format: scbl18
 Dataset Creation: Wed May 21 10:14:23 2014 by Log 7.0 B1
 Charted by: Depth in Feet scaled 1:240

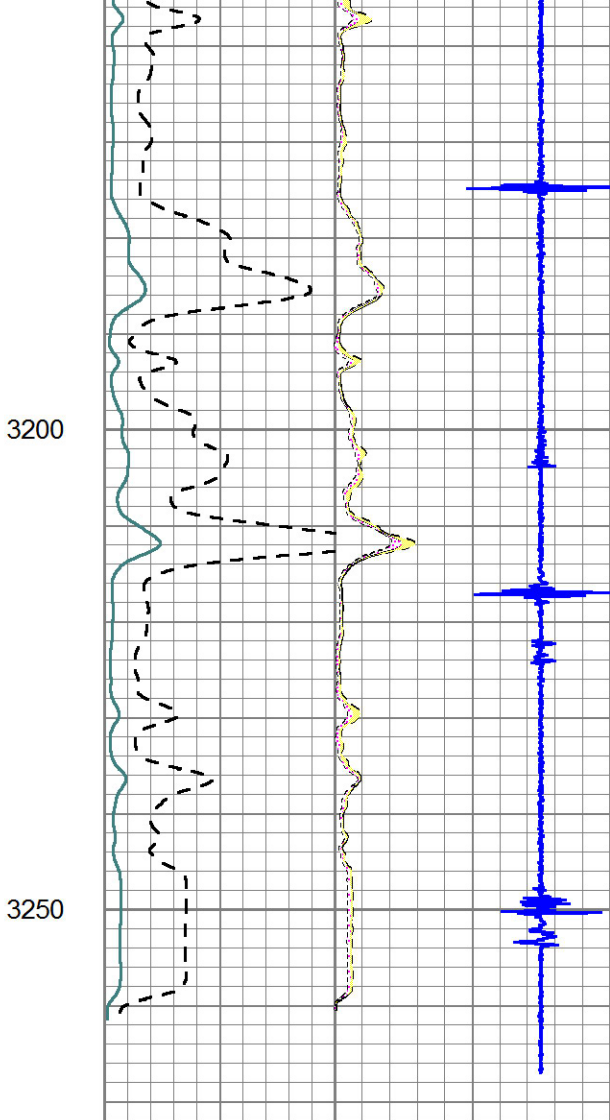
240	TT3FT (usec)	1374
0	Gamma Ray	150
LTEN		
150	GR	300

Amplitude	0	AMPAVG	150	
0 (mV)	100	0	AMPMAX	150
Amplified Amplitude	0	AMPMIN	150	
0 (mV)	20	3	CCL	-1

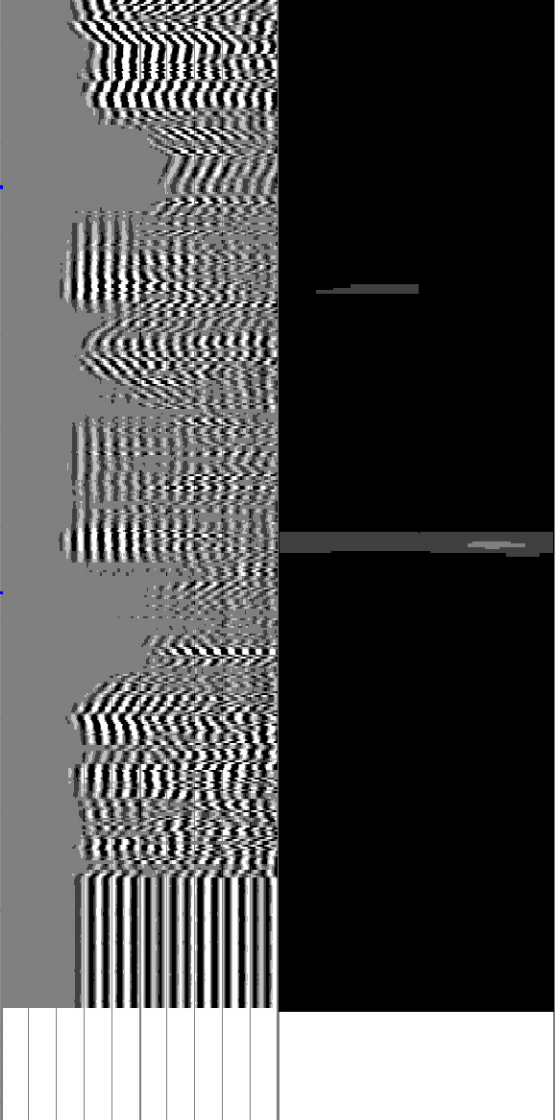




240	TT3FT (usec)	1374
0	Gamma Ray	150
LTEN		
150	GR	300



Amplitude	0	AMPavg	150
(mV)	100	AMPmax	150
Amplified Amplitude	0	AMPmin	150
(mV)	20	CCL	-1



200	VDL	1200	1	Sector Map	8
		25			
		75			