

KIM B. SHOEMAKER

CONSULTING GEOLOGIST

316-684-9709 * WICHITA, KS

GEOLOGIST'S REPORT

DRILLING TIME AND SAMPLE LOG

COMPANY L. D. DRILLING, INC.

LEASE # 2-3 VMD

FIELD OMLOR

LOCATION 2100' FSL & 2310' FWL

SEC 3 TWP 22s RGE 14w

COUNTY STAFFORD STATE KANSAS

CONTRACTOR PETROMARK DRILLING RIG 2

SPVD 12-16-14 COMP 12- -14

RTD 3890 LTD 3893

MUD UP 2640 TYPE MUD CHEMICAL

ELEVATIONS

KB 1941

DF _____

GL 1936

Measurements Are All From 1941 KB

CASING

SURFACE 8 5/8" @ 885

PRODUCTION 4 1/2" @

ELECTRICAL SURVEYS
DUAL IND., DENS-N.
MICRO

SAMPLES SAVED FROM 3200 TO 3890

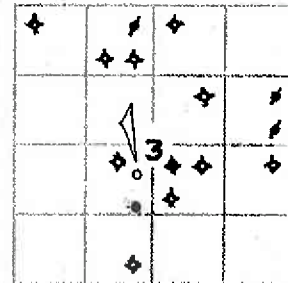
DRILLING TIME KEPT FROM 3000 TO 3890

SAMPLES EXAMINED FROM 3200 TO 3890

GEOLOGICAL SUPERVISION FROM 3400 TO 3890

GEOLOGIST ON WELL KIM B. SHOEMAKER

FORMATION TOPS	LOG	SAMPLES
ANHYDRITE	840-1101	837+1104
HEEBNER	3308-1367	3306-1365
BROWN LIME	3430-1489	3428-1487
LANSING	3440-1499	3437-1496
B/KC	3662-1721	3662-1721
VIOLA	3713-1772	3712-1771
SIMPSON	3751-1810	3749-1808
ARBUCKLE	3805-1864	3802-1861



REMARKS

12-16-14 SPVD
12-17 @ 889'
12-18 @ 1390'
12-19 @ 2327'
12-20 @ 2485'
12-21 @ 3590'
12-22 @ 3690'
12-23 @ 3860'

API: 15-185-23917

LEGEND

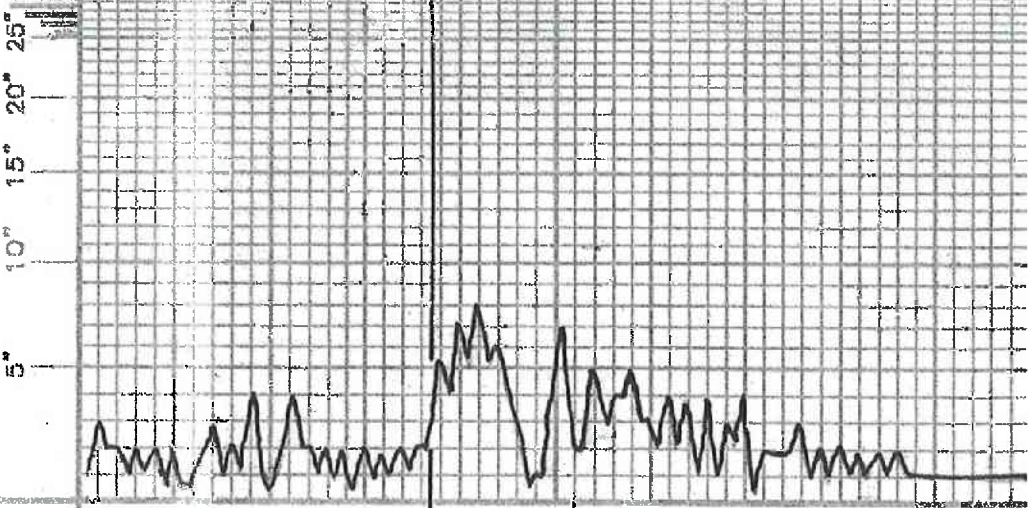
- Anhydrite
- Salt
- Sandstone
- Shale
- Carb sh
- Limestone
- Ool. Lime
- Chert
- Dolomite

SHOE01-11

DRILLING TIME IN MINUTES
PER FOOT

Rate of Penetration Increases

DEPTH
800



LITHOLOGY

SAMPLE DESCRIPTIONS

REMARKS

900

3000

3100

3200

V15: 51
V16: 92
V17: 90
V18: 3000

Samples are tagged

SI - BLK Carb

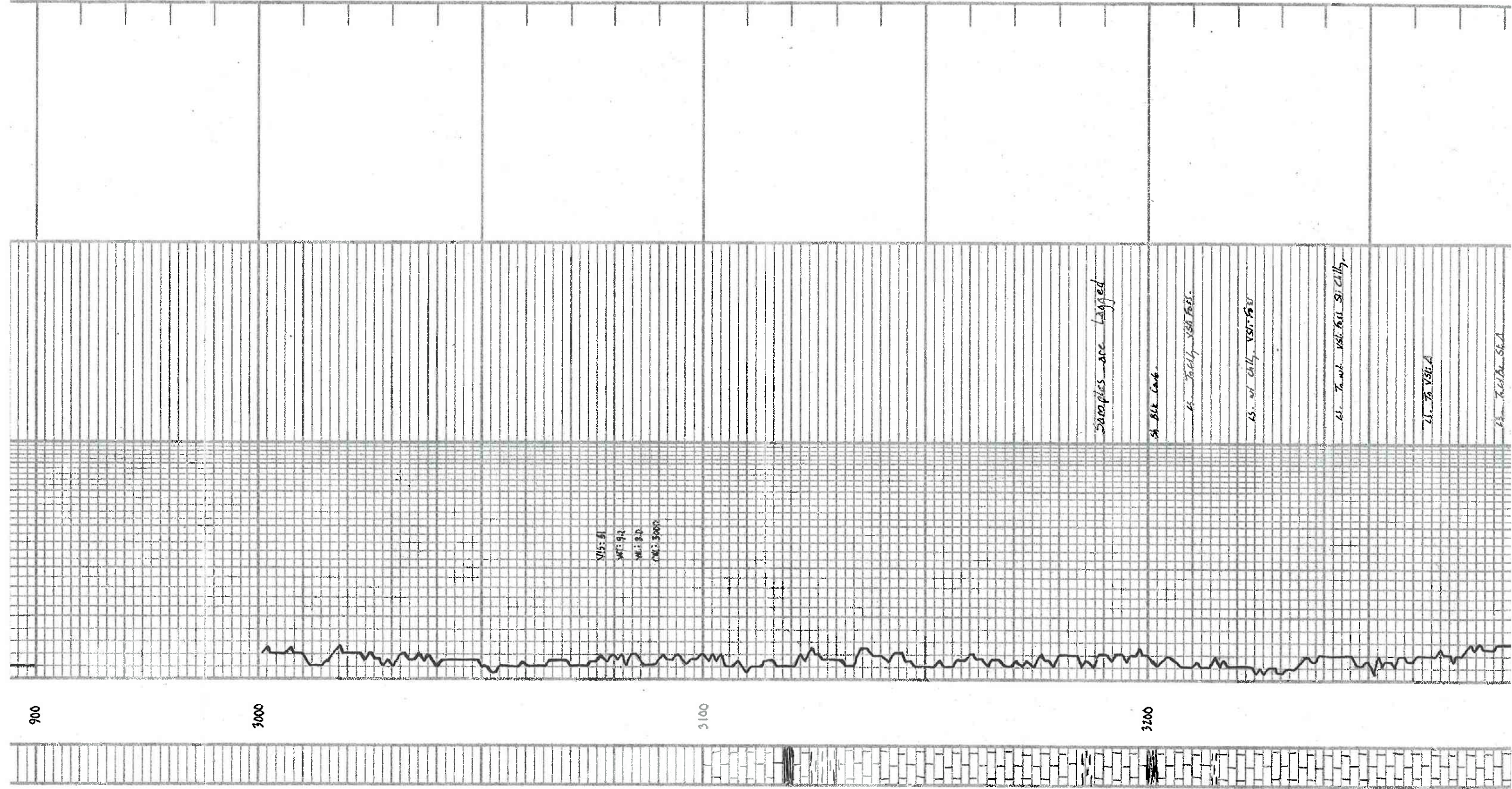
15. Totaly VSR 1000

13. wt. 0.14, VSR 1000

11. Total VSR 1000 SI Chilly

11. 75 VSR A

11. Total VSR A



3300

3400

3500

3600

TORONTO

DOUGLAS

DST

LS. T. 1/2 in. SIA

LS. T. 1/2 in. SIA

HEEBNER 3306-1365

LS. 1/2 in. SIA

LS. 1/2 in. SIA

LS. T. 1/2 in. SIA

LS. 1/2 in. SIA

LS. 1/2 in. SIA

LS. 1/2 in. SIA

LS. 1/2 in. SIA

LS. 1/2 in. SIA

BROWN LIME 3428-1487

LS. 1/2 in. SIA

LANSING 3437-1496

LS. 1/2 in. SIA

LS. 1/2 in. SIA

LS. 1/2 in. SIA

LS. 1/2 in. SIA

LS. 1/2 in. SIA

LS. 1/2 in. SIA

LS. 1/2 in. SIA

LS. 1/2 in. SIA

LS. 1/2 in. SIA

LS. 1/2 in. SIA

LS. 1/2 in. SIA

LS. 1/2 in. SIA

LS. 1/2 in. SIA

LS. 1/2 in. SIA

LS. 1/2 in. SIA

LS. 1/2 in. SIA

LS. 1/2 in. SIA

LS. 1/2 in. SIA

DST (1) 3615-3660

1999: 20' to 24' 3" DIA.

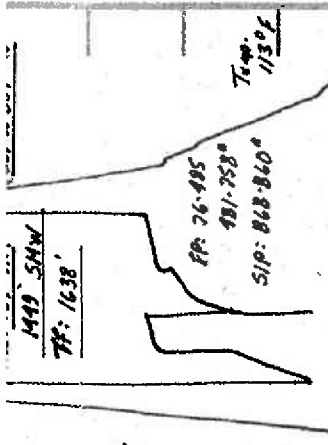
2004: 30' 45" 45" 60"

Rec. 189' W.M. 149' S.W.M.

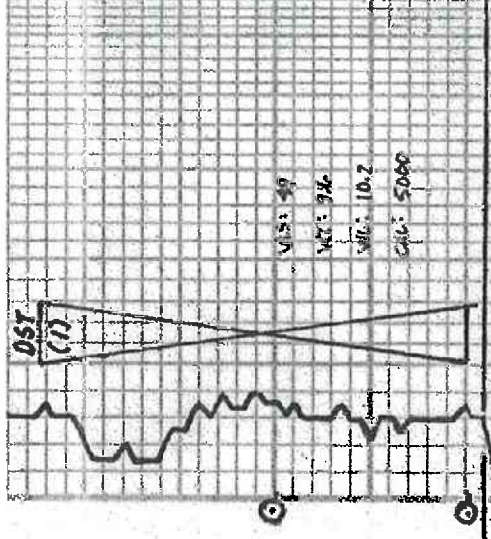
88' 2"

88' 4"

(202) 480 807 40



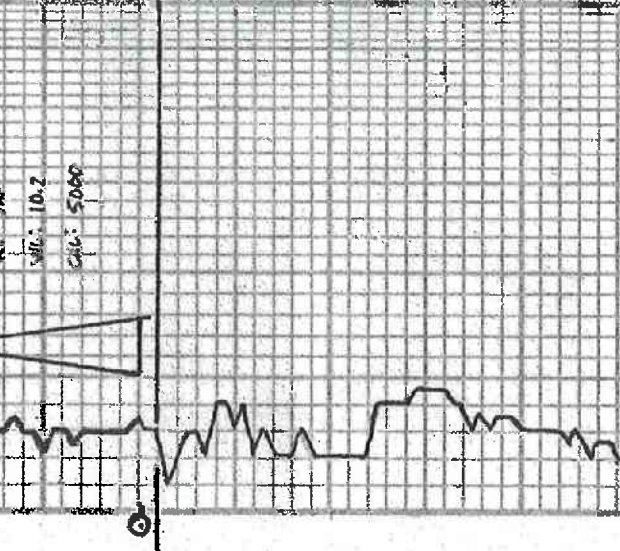
14. 7. V.S. 655
 Sh. LG. RL
 15. wt. 4.4g. Sh. 0.02. Si. 0.01. F. by one of
 DE RI BLE SH. ESP. (DE RI Hg) No Pb
 No Odr.



14. 7. V.S. 655
 Sh. LG. RL
 15. wt. 4.4g. Sh. 0.02. Si. 0.01. F. by one of
 DE RI BLE SH. ESP. (DE RI Hg) No Pb
 No Odr.

14. 7. V.S. 655
 Sh. LG. RL
 15. wt. 4.4g. Sh. 0.02. Si. 0.01. F. by one of
 DE RI BLE SH. ESP. (DE RI Hg) No Pb
 No Odr.

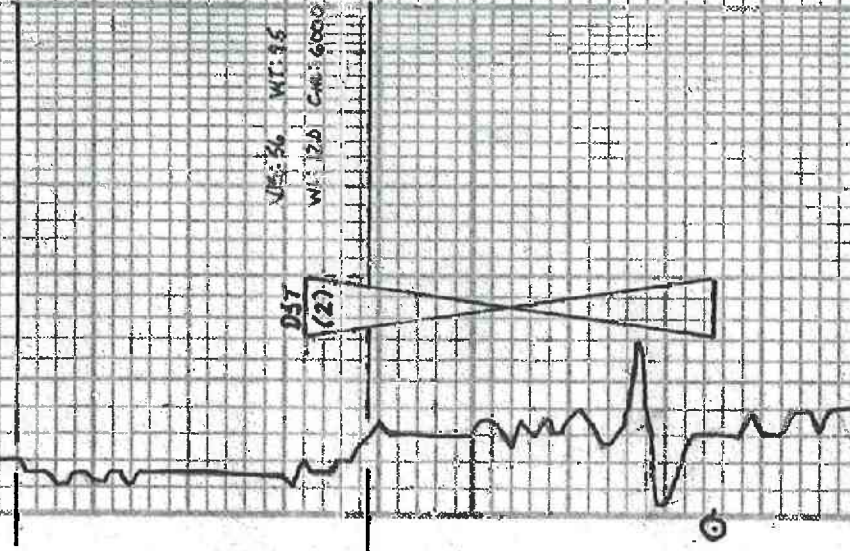
14. 7. V.S. 655
 Sh. LG. RL
 15. wt. 4.4g. Sh. 0.02. Si. 0.01. F. by one of
 DE RI BLE SH. ESP. (DE RI Hg) No Pb
 No Odr.



14. 7. V.S. 655
 Sh. LG. RL
 15. wt. 4.4g. Sh. 0.02. Si. 0.01. F. by one of
 DE RI BLE SH. ESP. (DE RI Hg) No Pb
 No Odr.

14. 7. V.S. 655
 Sh. LG. RL
 15. wt. 4.4g. Sh. 0.02. Si. 0.01. F. by one of
 DE RI BLE SH. ESP. (DE RI Hg) No Pb
 No Odr.

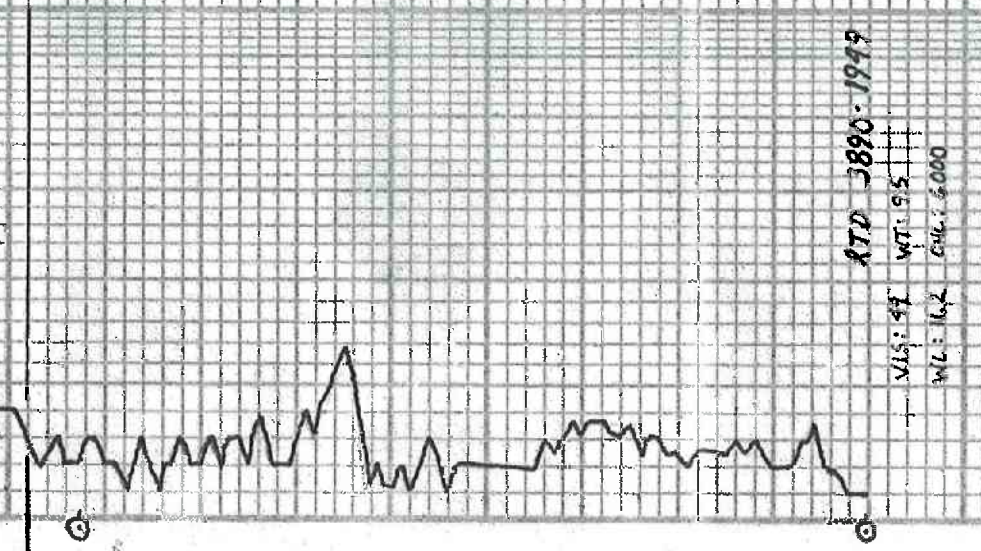
14. 7. V.S. 655
 Sh. LG. RL
 15. wt. 4.4g. Sh. 0.02. Si. 0.01. F. by one of
 DE RI BLE SH. ESP. (DE RI Hg) No Pb
 No Odr.



14. 7. V.S. 655
 Sh. LG. RL
 15. wt. 4.4g. Sh. 0.02. Si. 0.01. F. by one of
 DE RI BLE SH. ESP. (DE RI Hg) No Pb
 No Odr.

14. 7. V.S. 655
 Sh. LG. RL
 15. wt. 4.4g. Sh. 0.02. Si. 0.01. F. by one of
 DE RI BLE SH. ESP. (DE RI Hg) No Pb
 No Odr.

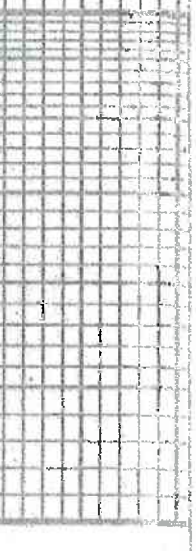
14. 7. V.S. 655
 Sh. LG. RL
 15. wt. 4.4g. Sh. 0.02. Si. 0.01. F. by one of
 DE RI BLE SH. ESP. (DE RI Hg) No Pb
 No Odr.



14. 7. V.S. 655
 Sh. LG. RL
 15. wt. 4.4g. Sh. 0.02. Si. 0.01. F. by one of
 DE RI BLE SH. ESP. (DE RI Hg) No Pb
 No Odr.

14. 7. V.S. 655
 Sh. LG. RL
 15. wt. 4.4g. Sh. 0.02. Si. 0.01. F. by one of
 DE RI BLE SH. ESP. (DE RI Hg) No Pb
 No Odr.

14. 7. V.S. 655
 Sh. LG. RL
 15. wt. 4.4g. Sh. 0.02. Si. 0.01. F. by one of
 DE RI BLE SH. ESP. (DE RI Hg) No Pb
 No Odr.



14. 7. V.S. 655
 Sh. LG. RL
 15. wt. 4.4g. Sh. 0.02. Si. 0.01. F. by one of
 DE RI BLE SH. ESP. (DE RI Hg) No Pb
 No Odr.