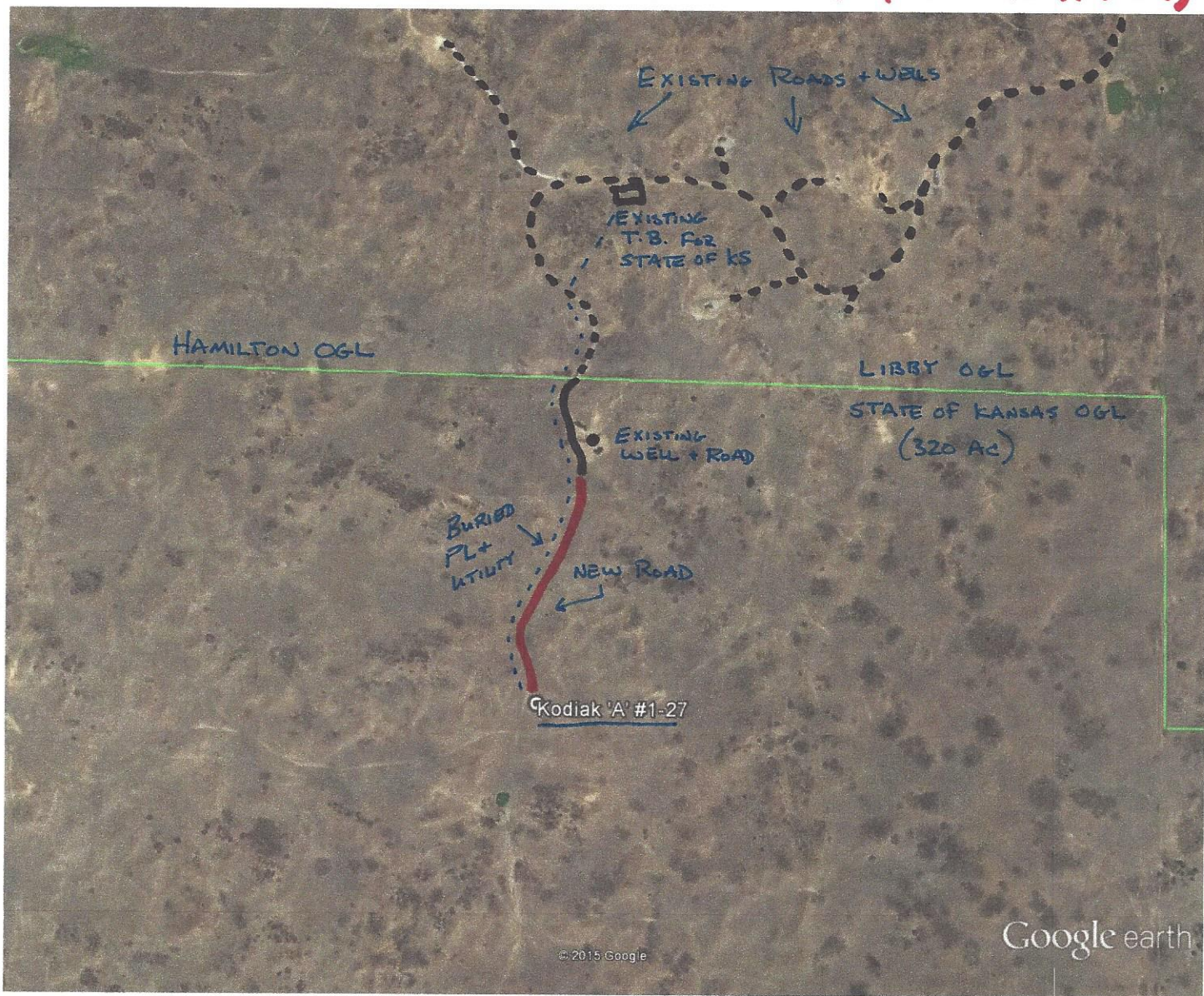


PROPOSED SURFACE FACILITY PLAT (KODIAK A 1-27)



Google earth

feet 3000
meters 900



NOTE: IF PRODUCTION IS ESTABLISHED FROM KODIAK 1-27 A
NEW TANK BATTERY WILL BE BUILT NEXT TO THE EXISTING
STATE OF KANSAS BATTERY LOCATED IN THE N/2 OF SECTION 27
ON NON-STATE LANDS.