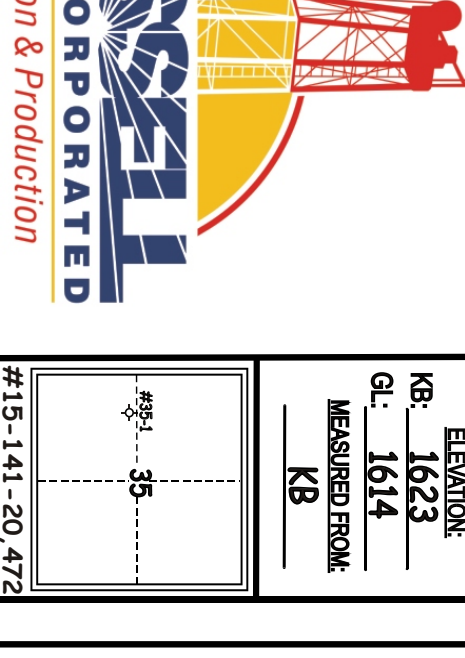


# KITT NOAH

PETROLEUM GEOLOGIST  
Kansas License #229



## GEOLOGISTS REPORT

DRILLING TIME AND SAMPLE LOG

DATE: 11-15-14  
TIME: 11:20-17:22

ELEVATION: KB 1623

MASSURED FROM: 1614

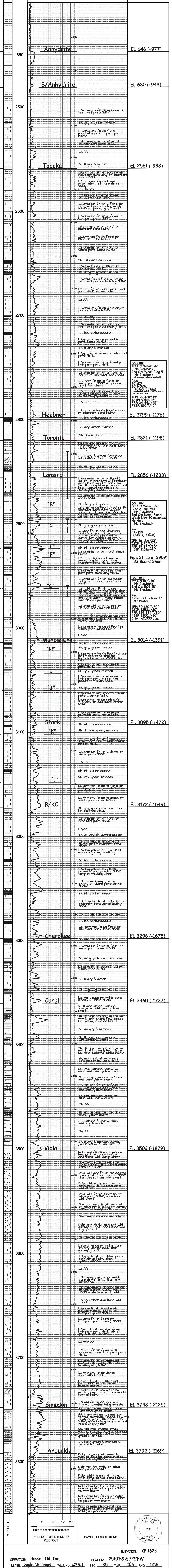
GLASS: KB

OPERATOR: Russell Oil, Inc.  
LEASE: Sigle-Williams WELL NO. #35-1  
LOCATION: 2510'FS & 725'FW  
SEC: 35 TWP: 10S RNG: 12W  
COUNTY: Osborne STATE: Kansas

FORMATION TYPE LOG  
 ANHYDRITE 646 (+977)  
 B/ANHYDRITE 680 (+943)  
 TOPEKA 2561 (-938)  
 HEEBNER 2799 (-1176)  
 TORONTO 2821 (-1198)  
 LANSING 2856 (-1233)  
 B/KC 3172 (-1549)  
 VIOLA 3502 (-1879)  
 ARBUCKLE 3792 (-2169)  
 LTD 3890 (-2227)  
 LTD 3892 (-2229)

COORDINATOR: Southwind Bldg #9  
 COMM: 10-30-2014 COMP: 11-8-2014  
 RTD: 3850 LTD: 3882  
 SAMPLES SAVED FROM: 2500 TO TD  
 BRILLING TIME SAVED FROM: 2500 TO TD  
 SAMPLES EXAMINED FROM: 2500 TO TD  
 GEOLOGICAL SUPERVISION FROM: 2580 TO TD  
 MUD UP: 2500 MUD TYPE: chemical  
 MUDLOG: Gary Schindler  
 BRILL. STEM TESTS TAKEN: 3

TRIBIBITE - Gene Budler/Roy Schwaeger  
 SURVEYS: Pioneer Energy Services  
 DUAL INDUCTION  
 MICROPING  
 BOREHOLE COMPENSATED SONIC



ELEVATION: KB 1623

OPERATOR: Russell Oil, Inc. LOCATION: 2510'FS & 725'FW  
 LEASE: Sigle-Williams WELL NO. #35-1 SEC: 35 TWP: 10S RNG: 12W  
 API: 15-141-20-472 FIELD: Wildcat COUNTY: Osborne STATE: Kansas