



**TRILOBITE TESTING, INC.**

# DRILL STEM TEST REPORT

Samuel Gary Jr. & Associates

**1/5s/24w Norton KS**

1515 Wynkoop STE 700  
Denver, CO 80202

**Marian et al #1-1**

Job Ticket: 60776

**DST#: 4**

ATTN: Dan Pritchard

Test Start: 2014.10.28 @ 21:24:00

## GENERAL INFORMATION:

Formation: **LKC "C - E"**

Deviated: No Whipstock: ft (KB)

Time Tool Opened: 22:54:15

Time Test Ended: 05:43:30

Test Type: Conventional Bottom Hole (Reset)

Tester: James Winder

Unit No: 57

**Interval: 3506.00 ft (KB) To 3558.00 ft (KB) (TVD)**

Reference Elevations: 2348.00 ft (KB)

Total Depth: 3558.00 ft (KB) (TVD)

2340.00 ft (CF)

Hole Diameter: 7.88 inches Hole Condition: Fair

KB to GR/CF: 8.00 ft

**Serial #: 8791 Inside**

Press@RunDepth: 34.32 psig @ 3507.00 ft (KB)

Capacity: 8000.00 psig

Start Date: 2014.10.28

End Date:

2014.10.29

Last Calib.:

2014.10.29

Start Time: 21:24:05

End Time:

05:43:29

Time On Btm:

2014.10.28 @ 22:54:00

Time Off Btm:

2014.10.29 @ 03:27:45

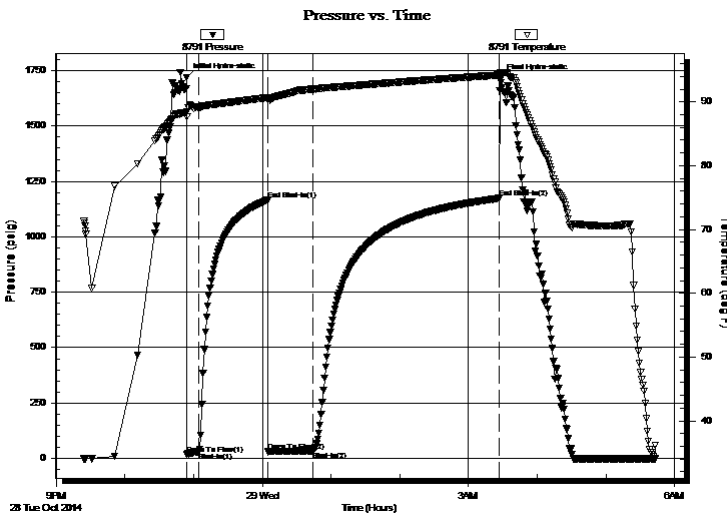
TEST COMMENT: 10 - IF: 1/2" Blow at open, built to 1 1/4"

60 - IS: No blow back

40 - FF: Blow built to 1"

160 - FS: No blow back

## PRESSURE SUMMARY



Time (Min.)	Pressure (psig)	Temp (deg F)	Annotation
0	1720.21	88.40	Initial Hydro-static
1	19.36	87.74	Open To Flow (1)
11	27.82	89.17	Shut-In(1)
71	1165.52	90.67	End Shut-In(1)
71	31.77	90.30	Open To Flow (2)
111	34.32	92.01	Shut-In(2)
273	1174.42	94.21	End Shut-In(2)
274	1714.83	94.64	Final Hydro-static

## Recovery

Length (ft)	Description	Volume (bbl)
40.00	WCM w/oil spots 68% <sub>m</sub> , 31% <sub>m</sub> , 1% <sub>o</sub>	0.28

## Gas Rates

Choke (inches)	Pressure (psig)	Gas Rate (Mcf/d)

\* Recovery from multiple tests





**TRILOBITE  
TESTING, INC**

# DRILL STEM TEST REPORT

**FLUID SUMMARY**

Samuel Gary Jr. & Associates

**1/5s/24w Norton KS**

1515 Wynkoop STE 700  
Denver, CO 80202

**Marian et al #1-1**

Job Ticket: 60776

**DST#: 4**

ATTN: Dan Pritchard

Test Start: 2014.10.28 @ 21:24:00

## Mud and Cushion Information

Mud Type: Gel Chem

Cushion Type:

Oil API:

deg API

Mud Weight: 9.00 lb/gal

Cushion Length:

ft

Water Salinity:

34000 ppm

Viscosity: 59.00 sec/qt

Cushion Volume:

bbbl

Water Loss: 8.79 in<sup>3</sup>

Gas Cushion Type:

Resistivity: ohm.m

Gas Cushion Pressure:

psig

Salinity: 500.00 ppm

Filter Cake: 1.00 inches

## Recovery Information

Recovery Table

Length ft	Description	Volume bbl
40.00	WCM w/oil spots 68%m, 31%m, 1%o	0.279

Total Length: 40.00 ft      Total Volume: 0.279 bbl

Num Fluid Samples: 0

Num Gas Bombs: 0

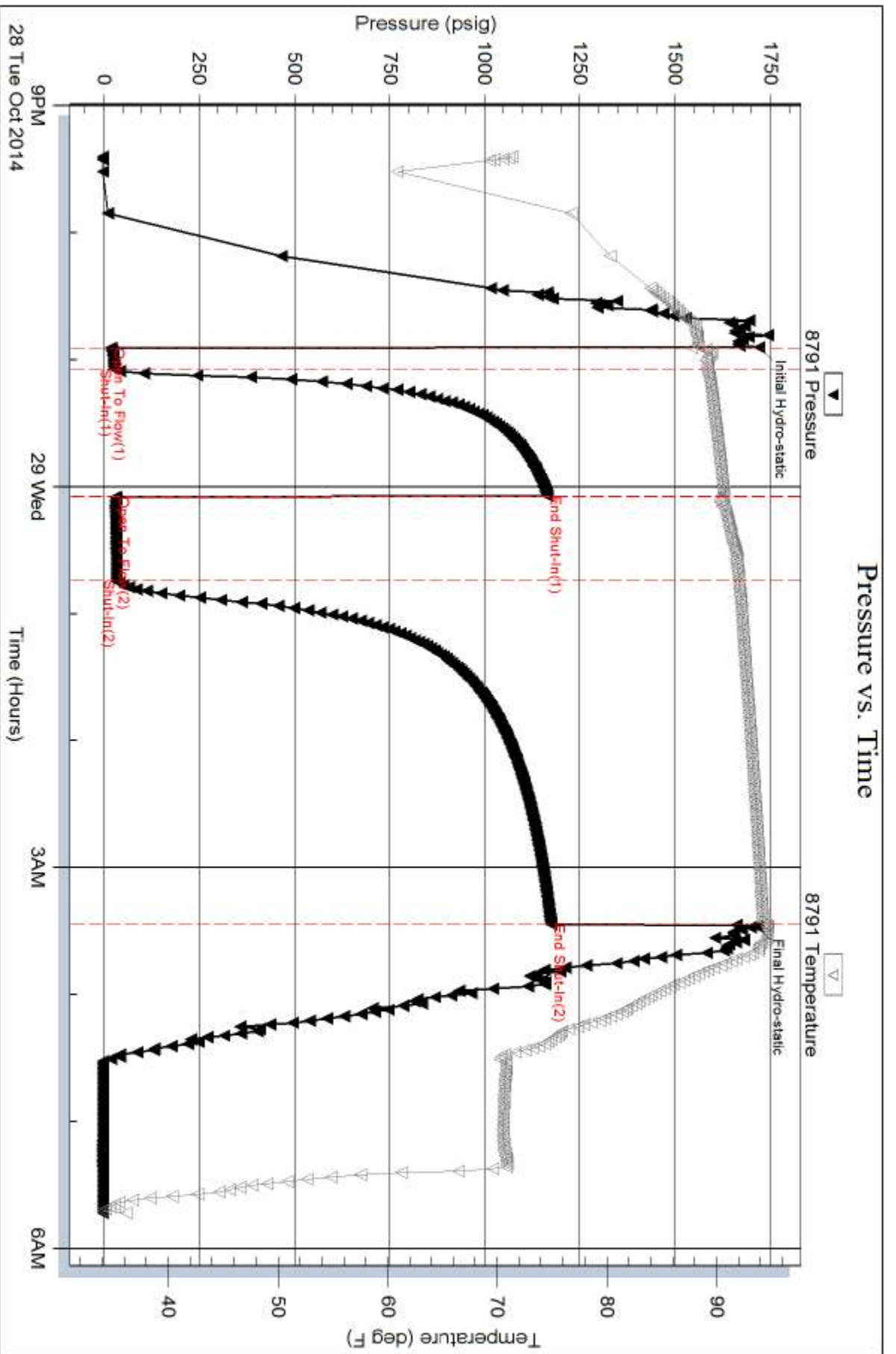
Serial #:

Laboratory Name:

Laboratory Location:

Recovery Comments: RW = .576 ohms @ 49 deg F Chlorides = 21,000 ppm

Sampler = 420 PSI, 1000 mL Water 98%w, 2%m, 1500 mL OMCW 68%w, 22%m, 5%o, 5%g RW = .302 ohms @ 49 deg F Chlorides = 34,000 ppm



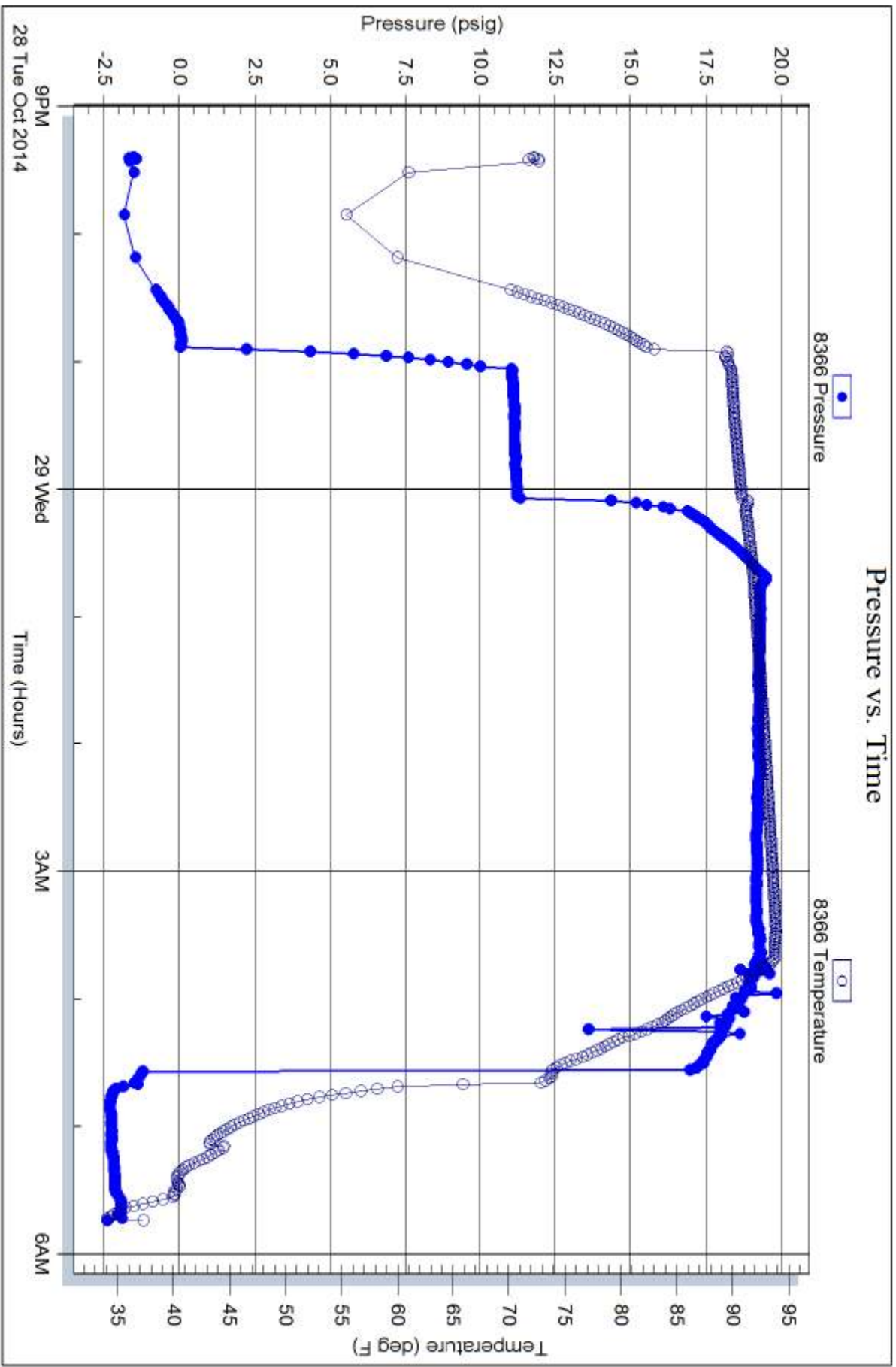
Serial #: 8366

Fluid

Samuel Gary Jr. & Associates

Merian et al #1-1

DST Test Number: 4



Trilobite Testing, Inc

Ref. No: 60776

Printed: 2014, 10, 29 @ 09:38:29