



**TRILOBITE
TESTING, INC**

DRILL STEM TEST REPORT

Vincent Oil Corp.
155 N. Market Ste. 700
Wichita, KS 67202-1821
ATTN: Tom Dudgeon

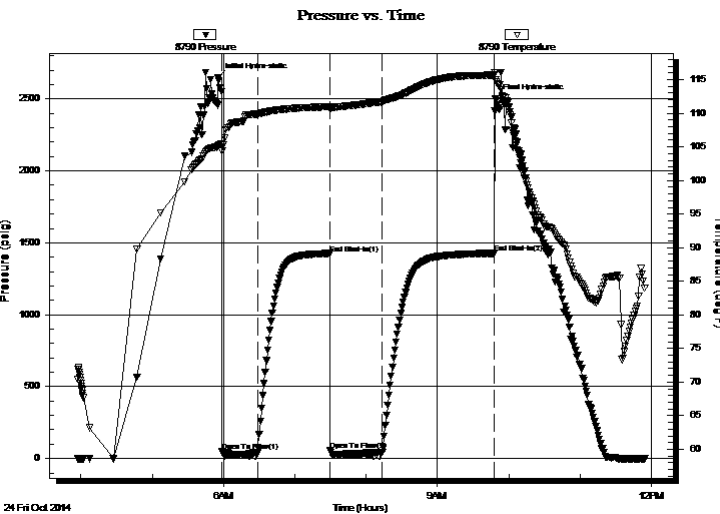
34-28s-23w Ford Co., KS
Keough 2-34
Job Ticket: 59915 **DST#: 2**
Test Start: 2014.10.24 @ 03:57:20

GENERAL INFORMATION:

Formation: **B. Penn**
Deviated: No Whipstock: 0.00 ft (KB)
Time Tool Opened: 05:58:50
Time Test Ended: 11:54:35
Interval: **5110.00 ft (KB) To 5170.00 ft (KB) (TVD)**
Total Depth: 5170.00 ft (KB) (TVD)
Hole Diameter: 7.88 inches Hole Condition: Fair
Test Type: Conventional Bottom Hole (Reset)
Tester: Ryan Reynolds
Unit No: 68
Reference Elevations: 2514.00 ft (KB)
2505.00 ft (CF)
KB to GR/CF: 9.00 ft

Serial #: 8790 **Inside**
Press@RunDepth: 43.38 psig @ 5117.00 ft (KB) Capacity: 8000.00 psig
Start Date: 2014.10.24 End Date: 2014.10.24 Last Calib.: 2014.10.24
Start Time: 03:57:25 End Time: 11:54:34 Time On Btm: 2014.10.24 @ 05:55:35
Time Off Btm: 2014.10.24 @ 09:48:50

TEST COMMENT: IF: Strong blow . BOB @ 4 min.
IS: No blow .
FF: Strong blow . BOB immed. GTS @ 15 min.
FS: No blow .



PRESSURE SUMMARY

Time (Min.)	Pressure (psig)	Temp (deg F)	Annotation
0	2650.01	105.14	Initial Hydro-static
4	48.51	104.38	Open To Flow (1)
33	40.01	109.86	Shut-In(1)
94	1425.58	111.00	End Shut-In(1)
95	54.47	110.71	Open To Flow (2)
138	43.38	111.69	Shut-In(2)
232	1426.65	115.67	End Shut-In(2)
234	2499.03	114.94	Final Hydro-static

Recovery

Length (ft)	Description	Volume (bbl)
30.00	Drig mud	0.42

* Recovery from multiple tests

Gas Rates

	Choke (inches)	Pressure (psig)	Gas Rate (Mcf/d)
First Gas Rate	0.13	16.00	11.75
Last Gas Rate	0.13	22.00	14.00
Max. Gas Rate	0.13	22.00	14.00



**TRILOBITE
TESTING, INC**

DRILL STEM TEST REPORT

FLUID SUMMARY

Vincent Oil Corp.

34-28s-23w Ford Co., KS

155 N. Market Ste. 700
Wichita, KS 67202-1821

Keough 2-34

Job Ticket: 59915

DST#: 2

ATTN: Tom Dudgeon

Test Start: 2014.10.24 @ 03:57:20

Mud and Cushion Information

Mud Type: Gel Chem

Cushion Type:

Oil API:

deg API

Mud Weight: 9.00 lb/gal

Cushion Length:

ft

Water Salinity:

5600 ppm

Viscosity: 52.00 sec/qt

Cushion Volume:

bbbl

Water Loss: 9.99 in³

Gas Cushion Type:

Resistivity: ohm.m

Gas Cushion Pressure:

psig

Salinity: 5600.00 ppm

Filter Cake: 0.05 inches

Recovery Information

Recovery Table

Length ft	Description	Volume bbl
30.00	Drig mud	0.421

Total Length: 30.00 ft

Total Volume: 0.421 bbl

Num Fluid Samples: 1

Num Gas Bombs: 1

Serial #: RR-1

Laboratory Name: Caraway

Laboratory Location: Liberal, KS

Recovery Comments:

