



# VINCENT OIL CORPORATION



Scale 1:240 Imperial

Well Name: Keough 2-34  
Surface Location: 1340 FNL 343 FWL NE NW SW NW  
Bottom Location:  
API: 15-057-20944-00-00  
License Number: 5004  
Spud Date: 10/15/2014 Time: 2:00 PM  
Region:  
Drilling Completed: 10/27/2014 Time: 5:51 AM  
Surface Coordinates: 1340 FNL & 343 FWL  
Bottom Hole Coordinates:  
Ground Elevation: 2505.00ft  
K.B. Elevation: 2515.00ft  
Logged Interval: 4200.00ft To: 5320.00ft  
Total Depth: 5230.00ft  
Formation: MISS  
Drilling Fluid Type: Chemical

## LOGGED BY

Company: Vincent Oil Corp  
Address: 155 N Market Ste 700  
Wichita, KS 67202  
Phone Nbr: 316.262.3573  
Logged By: Geologist Name: Tom Dudgeon

## OPERATOR

Company: Vincent Oil Corp  
Address: 155 N Market Ste 700  
Wichita, KS 67202  
Contact Geologist: Dick Jordan  
Contact Phone Nbr: 316.262.3573  
Well Name: Keough 2-34  
Location: 1340 FNL 343 FWL NE NW SW NW API: 15-057-20944-00-00  
Pool: Mulberry Creek  
State: Kansas Country: USA

**CONTRACTOR**

Contractor: Val Drilling Co.  
 Rig #: 2  
 Rig Type: Rotary  
 Spud Date: 10/15/2014  
 TD Date: 10/27/2014  
 Rig Release: 10/28/2014

Time: 2:00 PM  
 Time: 5:51 AM  
 Time: 12:00 AM

**ELEVATIONS**

K.B. Elevation: 2515.00ft  
 K.B. to Ground: 10.00ft  
 Ground Elevation: 2505.00ft

**TOTAL DEPTH**

Measurement Type:	Measurement Depth:	TVD:
Driller	5230.00	5231.00
Logger	5231.00	5231.00

**SURFACE CO-ORDINATES**

Well Type: Vertical  
 Longitude: -99.8307254  
 N/S Co-ord: 1340 FNL  
 E/W Co-ord: 343 FWL  
 Latitude: 37.5686274

**DRILLING FLUID SUMMARY**

Type	Date	From Depth	To Depth
Chemical	10/27/2014	3805.00ft	5231.00ft

**OPEN HOLE LOGS**

Logging Company: Nabors Completion and Production Services, Co.  
 Logging Engineer: Jeff Groneweg  
 Truck #: 4854  
 Logging Date: 10/27/2014  
 # Logs Run: 4

Time Spent: 7  
 # Logs Run Successful: 4

**LOGS RUN**

Tool	Logged Interval	Logged Interval	Hours	Remarks	Run #
DI	0.00ft	5231.00ft	3.00		1
CN/DE/PE	4150.00ft	5231.00ft	3.00		1
Micro	4150.00ft	5231.00ft	4.00		2
Sonic	0.00ft	5231.00ft	4.00		2

**LOGGING OPERATION SUMMARY**

Date	From	To	Description Of Operation
10/27/2014	0.00ft	5231.00ft	Logs ran successfully

**CASING SUMMARY**

	Surface	Intermediate	Main		
Bit Size	12.25 in		7.88 in		
Hole Size	12.25 in		7.88 in		
	Size	Set At	Type	# of Joints	Drilled Out At
Surf Casing	8.625 in	644 ft	23#	15	10/17/2014 5:00 PM
Int Casing					
Prod Casing	4.5 in	5317 ft	11.6#	120	

**CASING SEQUENCE**

Type	Hole Size	Casing Size	At
	0.00 in	0.00	0.00 ft

**DST #1**

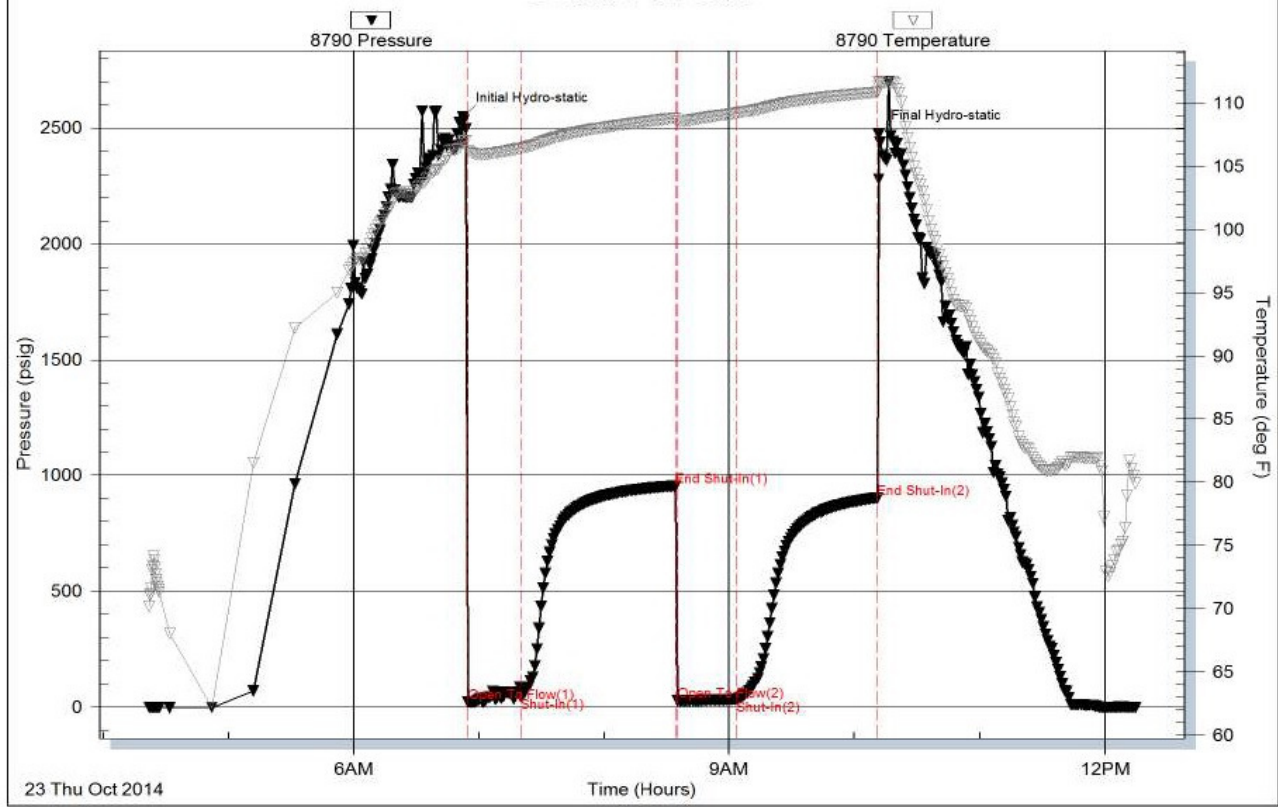
Serial #: 8790

Inside Vincent Oil Corp.

Keough 2-34

DST Test Number: 1

Pressure vs. Time



Trilobite Testing, Inc

Ref. No: 59914

Printed: 2014.10.23 @ 13:23:27

### DST #2

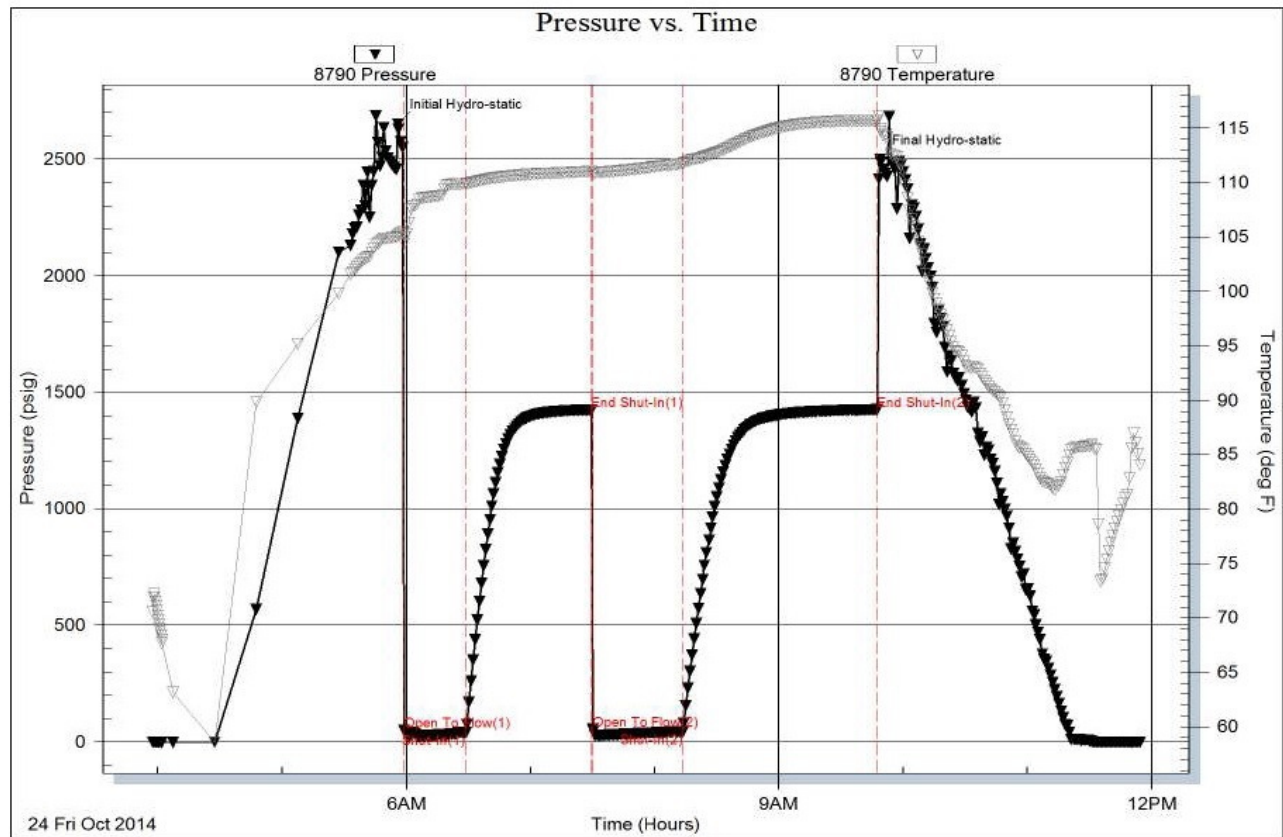
Serial #: 8790

Inside

Vincent Oil Corp.

Keough 2-34

DST Test Number: 2



Trilobite Testing, Inc

Ref. No: 59915

Printed: 2014.10.24 @ 13:14:14

### DST #3

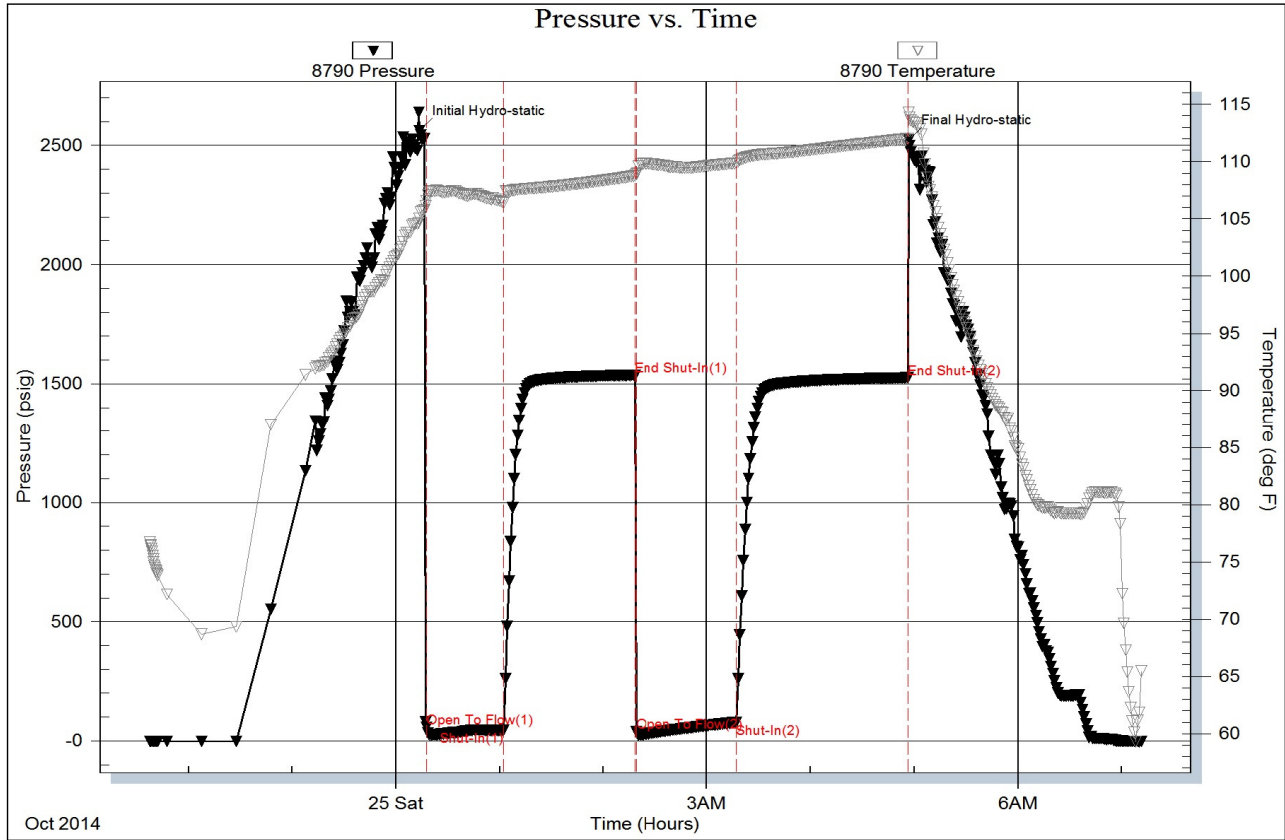
Serial #: 8790

Inside

Vincent Oil Corp.

Keough 2-34

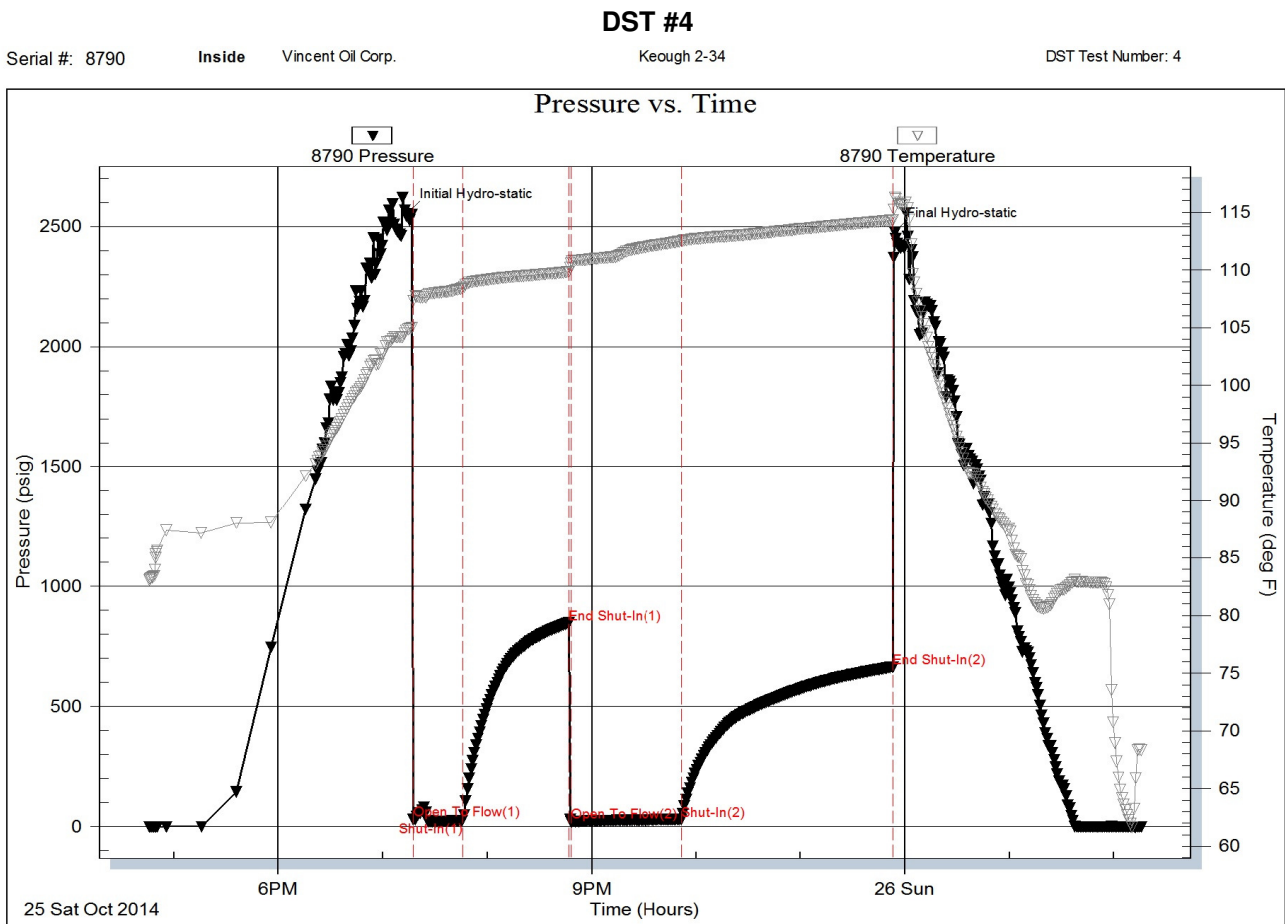
DST Test Number: 3



Trilobite Testing, Inc

Ref. No: 59916

Printed: 2014.10.25 @ 09:59:30



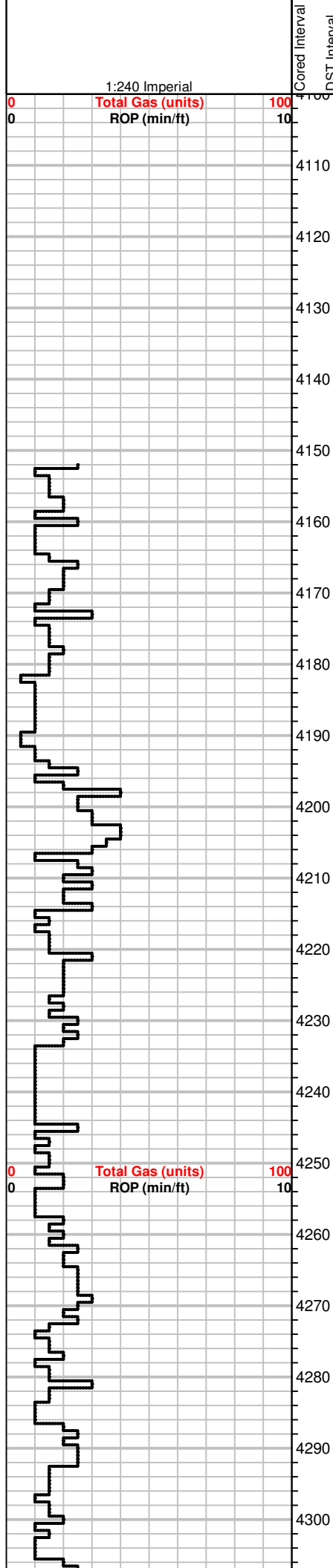
Trilobite Testing, Inc

Ref. No: 59917

Printed: 2014.10.26 @ 05:00:42

DST #5





Geologist on location @ 9:45AM 10/21/14

Gas Detector provided by MBC Well Logging on & working @ 4390'

Drill time from 4150' to RTD  
10' Samples from 4200' to RTD

MS-WS, crm to lt. brn, mic-xln to earthy txt, sandy pcs scatt, chalky throughout, soft, friable, crinoids and brach frgmts, rare Chert, gray, fossilif.

MS to WS, A.A., some pcs micro oolitic, , rare Chert, white, fossilif, NS, moldic por.

WS, mottled, brn, tan, crm, gray, mic-xln, dense, m-gr oolitic in pcs, some pcs hard, f-gr oolitic, some pcs chalky matrix.

MS-WS, A.A., f-xln to vf-suc txt, earthy, dense, fusulinids, dull fluor, NS, Chert, white, crinoid frgmts.

MS, tan to gray, f-xln to vf-xln, A.A., firm, NS, Chert, white

MS, tan to primarily gray pcs, some crm, f to mic-xln, firm to hard, chalky matrix, dense scatt pcs, most firm, NS

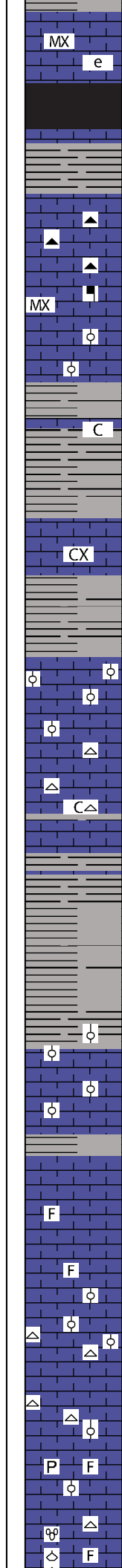
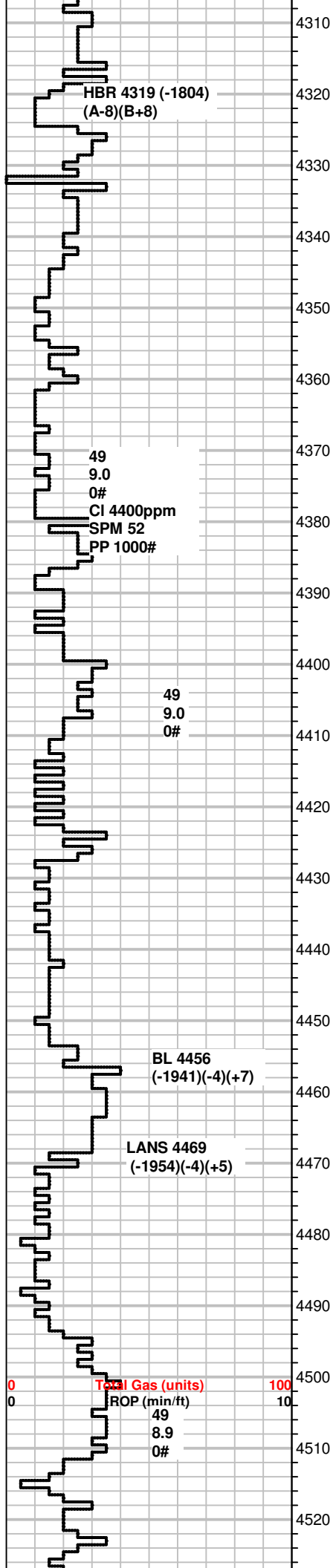
some SH, gray, MS, crm to brn, earthy to mic-xln, scatt chalky pcs, hard to firm, Chert, white, gray, fossilif.

MS, A.A., inc in gray SH, some WS, crm, f to m-gr oolitic, hard, NS

flood SH, blk, carbonaceous, dk. gray, some gas bubbles, scatt MS, crm, earthy, firm NS

SH, blk, A.A.

MS, crm to tan, massive to earthy txt, chalky in part, SH, blk, dk.



gray, dec. amt.

MS, tan to lt. gray, mic-xln to earthy, soft, chalky pcs, SH, blk

SH, blk, dk. gray, carbonaceous, MS, tan to lt. gray, rare pyrite, some glauc specs, fossilif.

SH, blk, A.A, rare bleeding gas  
 MS, gray, chalky, firm, NS

MS, gray to crm, mic-xln, firm, rare chalky pcs, Chert, gray, white, stil carrying SH from above, blk, carb.

MS, gray, vf-xln to mic-xln, firm to hard, dense pcs, glauc, rare heavy minerals specs scatt.

MS, gray to crm, some pcs mottled w/ crm & gray, chalky matrix, scatt ooids (gray, m-gr), some fossils, dull fluor, ns scatt SH, blk, dk.brn, silty

MS, crm to tan, vf-xln to mic-xln, massive txt, sli. chalky pcs, hard, mineral fluor, NS  
 SH, blk, gray

MS, tan cripto-xln, hard, dense, NS

SH, blk, grn, gray

MS-WS, crm to tan, some brn, f-xln, some dense pcs, micro-oolitic in part, firm, NS

MS, crm/gray, vf-xln, dense, mottled, mineral specs throughout, mirco-oolitic

MS, crm to gray, A.A., some f-xln, chalky matrix, mottled tan pcs, SH, gray, green, some striated, Chert, opaque.

SH, gray

MS, A.A., cm to gray, mic-xln, firm to brittle, NS  
 SH, gray to green

Rare MS, brn, mic-xln, dense, hard, crm to tan, mottled m-gr oolitic pcs scatt,  
 SH, gray

MS, tan, massive txt, firm, rare f-gr oolitic pcs  
 MS, brn to tan, some crm, mic-xln, gritty txt in part, hard, NS

SH, gray

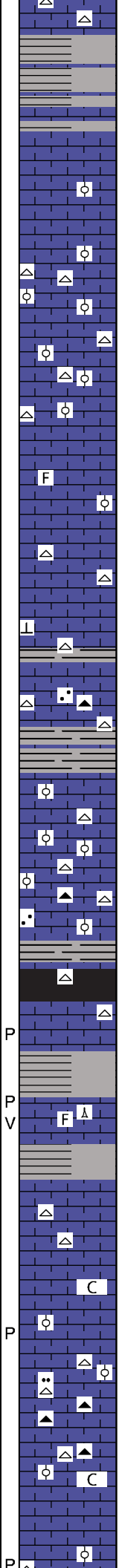
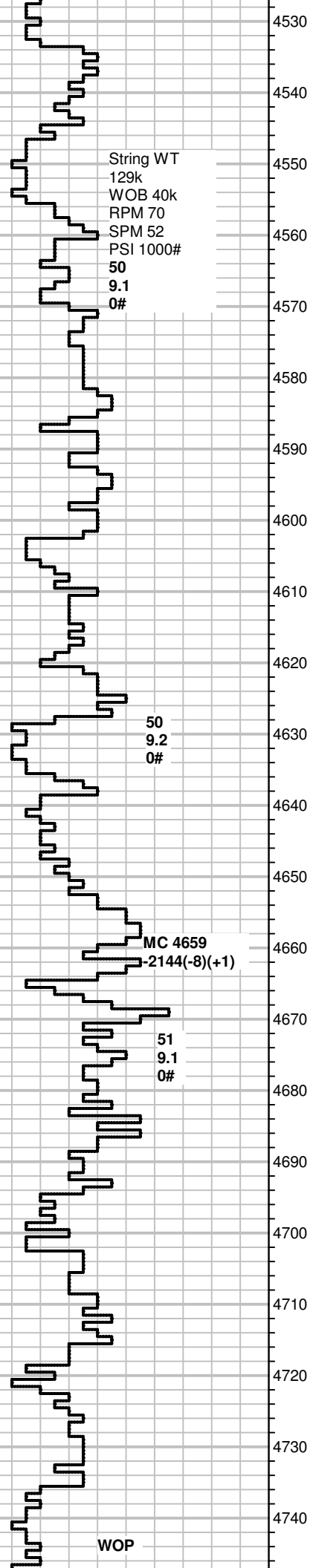
MS, crm to lt. gray, some brn, massive txt, hard to firm, rare to scatt fossils, NS

WS-MS, off white to crm, f-gr oolitic, firm, NS  
 Chert, white, blocky

MS, crm to tan, vf-xln, gritty txt, hard, Chert opaque, fossilif,  
 SH, gray blk, about 10% of tray

MS, A.A., rare m-gr oolitic, tan, gray ooids, rare pyrite, sli. chalky, decrease in SH, gray, blk

WS, brn to gray, tan pcs scatt, f-xln, earthy pcs, fossilif (fusulinids, brachs, crinoids), mottles pcs, Chert, white  
 SH, gray. green. red



SH, A.A., MS, crm to lt. tan, massive txt, some pcs f-gr oolitic, firm, NS

MS, lt. gray, mic-xln in chalky matrix, firm to hard, rare mottled pcs, dull fluor, NS, Some SH, gray, green, rare blk

MS, A.A., inc in crm pcs, soft, chalky, magntite specs, fossilif, rare SH blk, some gray, green

MS, crm to tan, mix-xln, some pcsa mottled, some sandy pcs, m-gr ooids present, some blk specs, Chert, white,

MS, tan, cript-xln, massive txt, hard, some ooids in dense matrix, Chert, white, fossilif, gray pcs scatt, Inc in SH, gray, green

MS, gray, mic-xln, firm, platy, some fossils, NS  
SH, gray

MS, crm to gray, f-xln, sli. earthy txt, firm, some pcs mottled, gray, m-gr oolitic in part, rare Chert, white, fossilif, some SH, gray

MS, A.A., Chert, white, fossilif.

MS, crm to tan, mic to vf-xln, hard, dense, calcite on edges of rare pcs, Chert, white  
SH, rare blk, inc. in gray

MS, crm, vf-xln, some earthy, rare fn-gr oolitic pcs, sandy txt, Chert, white, gray, micro oolitic.  
SH, dk. gray, gray

MS, crm to lt. tan, f-xln, silty to chalky txt, soft, Chert, white, tan, oolitic, fossilif.,

WS-PS, brn to gray, cript-xln, firm to hard, micro to m-gr oolitic pcs, Chert, white, micro oolitic, gray, brn

MS, crm to off white, chalky matrix in 1/3 of tray, vf-xln, soft, sandy pcs, some fossilif, rare edge stn in dry, scatt Chert, gray

MS, crm to lt. gray, vf-xln, gritty txt, micro oolitic, friable, dull fluor, NS, Chert, white  
SH, blk, gray

SH, blk, gray, some sandy to silty, MS, crm to tan, earthy to mic-xln, hard to firm, fractured pcs, rare fossils(spicules)

SH, gray, silty, dec. amt, MS crm to brn, vf-xln to mic-xln, some pcs w fossil frgmts, m-gr oolitic in paart, hard, dense, rare chalky pcs, NS

MS, crm to brn, mic-xln to fn-sucrosic, gritty txt, hard, dense, NS, Chert, white, platy

MS, A.A., chalky pcs throughout, carrying SH, rare dk. gray, gray

MS-WS, crm to off white, mic to cript-xln, oolitic in part, hard to firm, some gritty pcs, most dense, NS, Chert, white, micro oolitic, gray pcs scatt

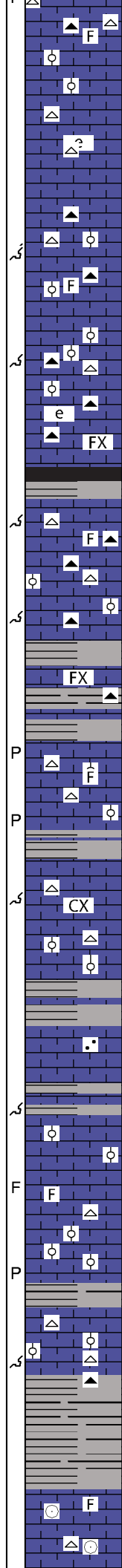
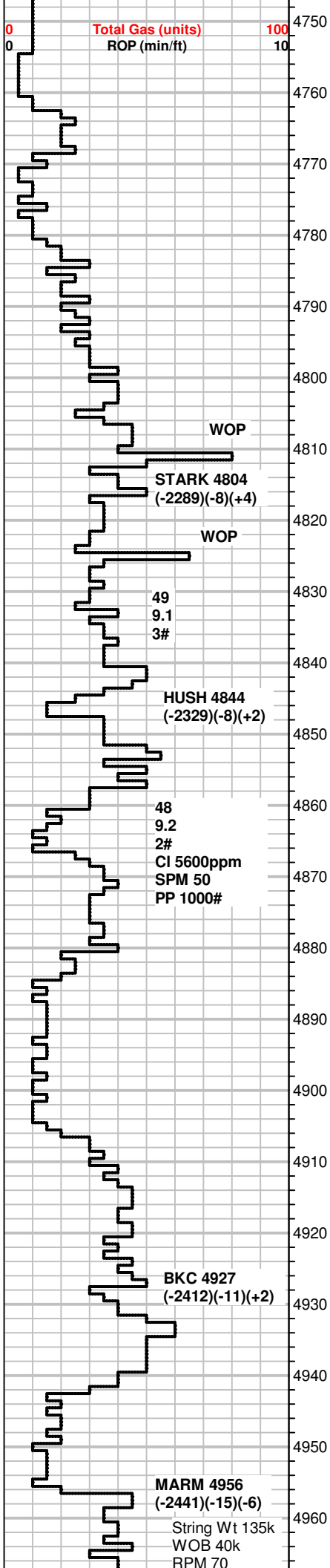
MS, crm to gray, vf to f-xln, dense looking but chalky matrix, some gray pcs fossilif, hard to brittle, rare earthy pcs, NS, Chert, brn, gray

MS, crm to brn-ish gray, earthy to silky looking, firm to soft, mottled pcs common,  
SH, dk. gray, gray

MS-WS, crm to tan, f- to dk. dense, sli. oolitic, m. granoside, firm, NS

**Background gas 60 Units**





MS-W.S, crm to tan, f-xln, dense, sil. oolitic, m-gr ooids, firm, NS  
Chert, brn white, fossilif

M̄S-W̄S, crm , tan, lt. gray, f-xln, dense, some pcs mottled, oolitic,  
m-gr, Chert, white, m-gr oolitic, NS

MS, crm, earthy txt, firm to hard, dense pcs, dull fluor, NS  
Chert, white/brn pcs

WS-PS, brn to tan, m-gr oolitic, ringed ooids, dense, hard, NS  
Chert, gray, fossilif.

WS-PS, brn, mic-xln, oolitic in dense matrix, hard, NS  
Chert, brn, white

MS, brn, earthy to fn-xln, brittle, hard,  
Chert, brn, blocky

SH, blk, dk. gray

MS, brn to tan, massive txt, firm to hard, rare PS, crm, m-gr oolitic,  
Chert, white, brn, gray, fossilif

MS, crm to lt. gray some tan,vf-xln to fn sucrosic, some gritty txt,  
some WS, oolitic, m-gr, dense, hard, NS  
Chert, brn, white, spicules, micro oolitic white pcs

MS, lt. gray to brn, f-xln, dense, hard, some gritty txt,  
Chert, white, brn

SH, blk, gray, dk. gray,  
MS, A.A., Chert, white, fossilif

MS, crm to gray, f-xln, dense, NS  
SH, blk, gray

MS, A.A., some cript-xln, Chert on edge, free Chert, white

MS, crm to brn, gritty to massive txt, dense, hard, fossilif, NS  
Chert, white, m-gr oolitic

Sh, blk, gray, scatt. in tray  
MS-W.S, crm to brn, f-xln, firm to hard, gritty txt, NS

MS-W.S, A.A., brn pcs fossilif to sub oolitic crm pcs, dense, inc in  
gray SH, blk also

MS-W.S, crm to tan, lt. gray, f-xln, dense, some pcs mottled, NS,  
Chert, white, m-gr ooids,  
some SH, gray

MS-W.S, gray to brn some crm, gritty to silty txt, fossilif, micro  
oolitic, dense, NS, Chert, tan, white  
inc SH, gray

MS, gray, rare crm pcs, m-xln, silty, hard dense, some fossils, rare  
oolites, Chert, gray white fossilif, blk  
SH, gray, green

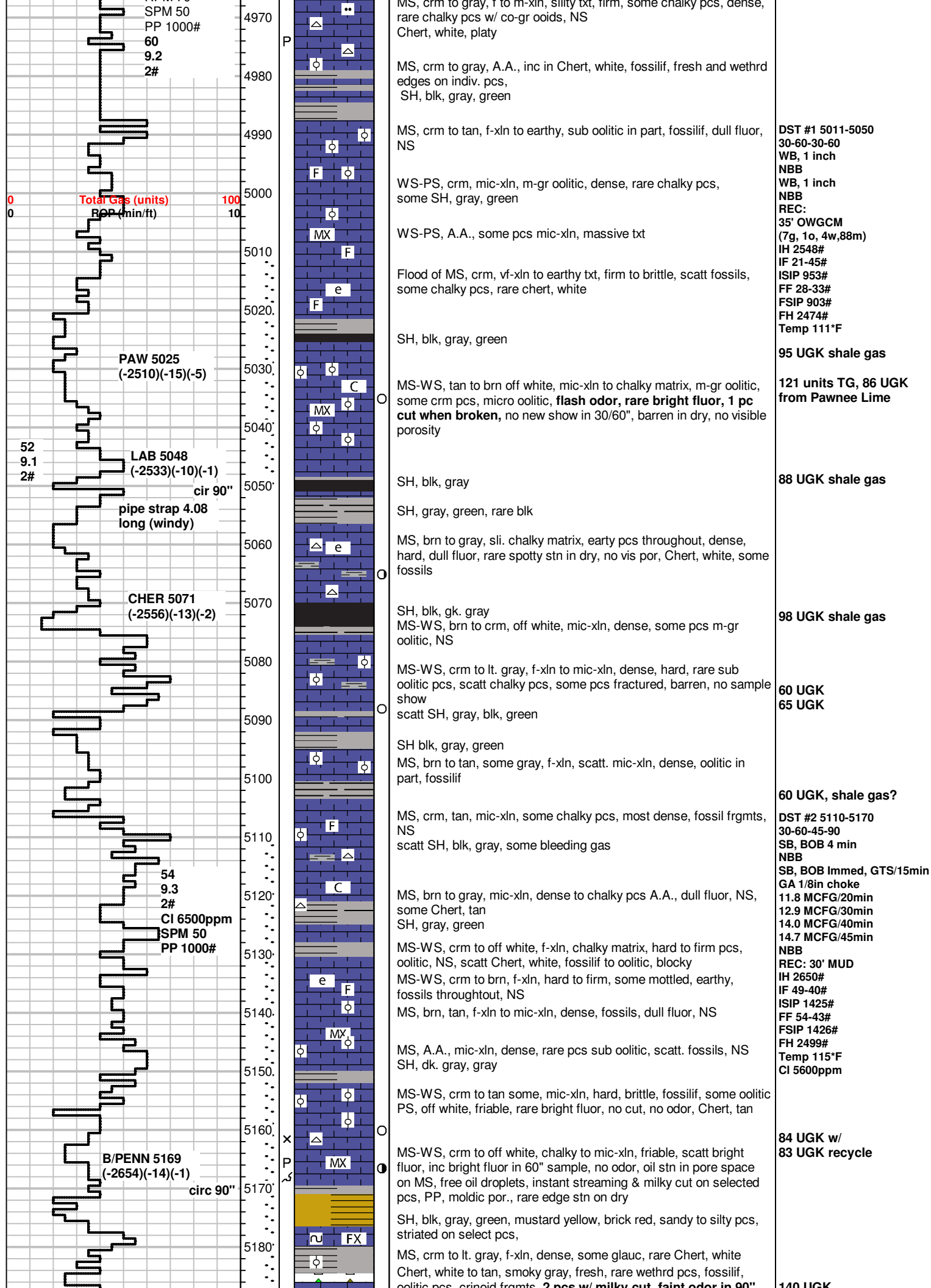
SH, blk, gray, green,  
MS, crm to gray, mottled, firm to hard, dense pcs, fossilif.-crinoid  
sections intact.

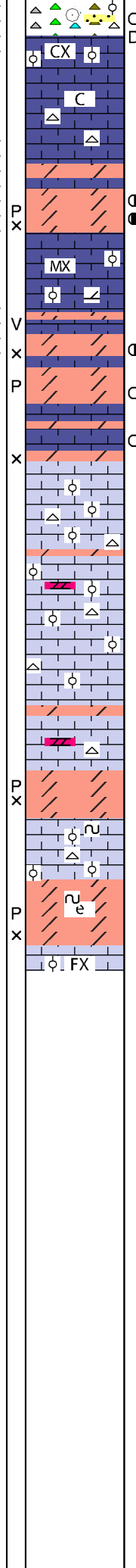
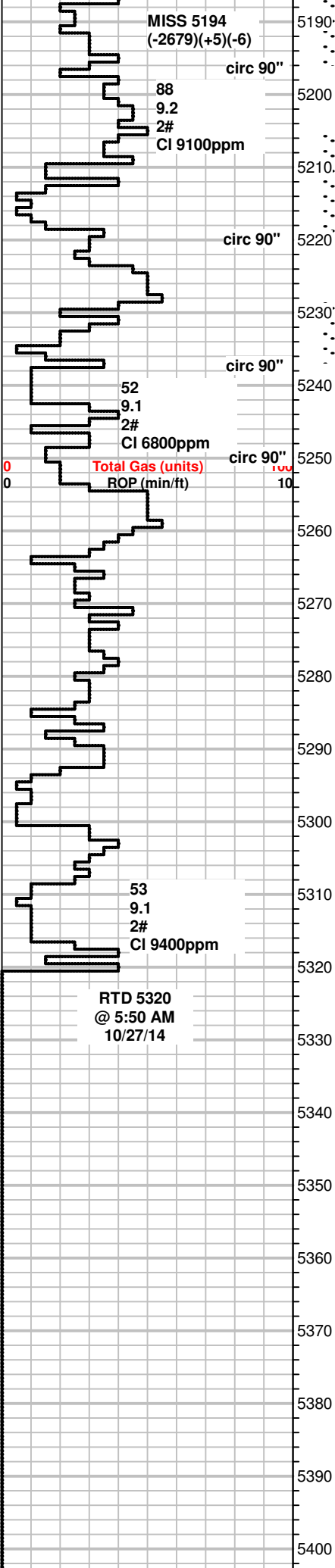
MS, crm to gray, f to m, silty txt, firm, some challenges, dense

Background gas 65 Units

63 UGK, 40 UGK recycle,  
shale gas

67 UGK, 45 UGK recycle,  
shale gas





oolitic pcs, crm to light gr, 2 pcs w/ milky cut, faint odor in 50  
**spotty stn in dry, pp por.**

MS-WS, crm to brn, f-xln, oolitic, hard, mineral fluor, rare PS, brn,  
 m-gr oolitic, dense, cript-xln, NS

MS-WS, crm to off white, f-xln, chalky pcs, firm to hard,  
 scatt Chert, white

Dolo, gray to lt. brn, fn-sucrosic, friable, **good odor in sample bag  
 and tray, stn on wet sample, bleeding gas, live oil in tray,  
 instant streaming cut on selected pcs, pp and inter-xln por.**

MS-WS, crm to of white, mic-xln, m-gr oolitic to massive txt, sli.  
 dolomitic, NS

Dolo, crm to brn, f-suc to m-suc, soft friable, **partial to even stn,  
 scatt bright fluor, slow milky cut on 50% of selected pcs, fair  
 to good odor in bag, vuggy to pp por**

Dolo, tan to brn, vf-suc, firm to hard, mineral fluor, rare spotty bright  
 fluor, slow streaming to milky cut on selected pcs(50%) faint odor,  
 no stn, no live oil.

WS-PS, crm to off white, f-xln, hard, dense, oolitic to sub oolitic  
 pcs, NS

Dolo, brn to tan, fn-sucrosic, hard, waxy looking, scatt PP por,  
 Mineral fluor, NS

WS-PS, crm to tan, some off white, f-xln, chalky txt, oolitic, m-gr,  
 firm to hard, dull fluor, NS

Scatt Dolo, brn, fn-suc, hard, mineral fluor, NS

WS-PS, crm to off white, A.A. NS

Dolo, gray to brn, f-xln, firm to scatt hard pcs, vf-sucrosic, waxy txt,  
 mineral fluor, No sample show, very faint odor in bag

WS-PS, scatt MS, crm to brn, f-xln, some chalky pcs, oolitic, hard,  
 mineral specs(glauc, rare dark specs),

Dolo, some Limy, crm to lt. gray, earthy, vf-sucrosic txt, some pcs  
 w/ glauc, mineral fluor, NS

WS-PS, crm to off white, f-xln, hard to firm, oolitic, scatt glauc  
 specs, NS

154 UGK,  
 120 Unit recycle, possible  
 trip gas

+158 UGK,  
 70 Unit recycle

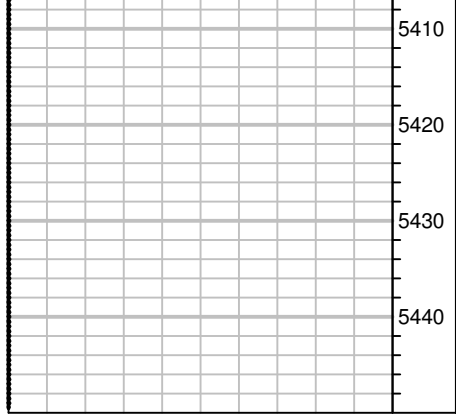
69 UGK

NO GAS INCREASE

DST #3 5168-5196  
 45-75-60-90  
 SB BOB/30 sec  
 GTS/33 min  
 GA 1/8 in choke  
 15.5 MCFG/35 min  
 16.2 MCFG/45 min  
 NBB  
 SB BOB/immed  
 GA 1/8 in choke  
 11.8 MCFG/10 min  
 15.9 MCFG/20min  
 19.2 MCFG/30 min  
 22.6 MCFG/40 min  
 25.2 MCFG/50 min  
 27.8 MCFG/60 min  
 REC: 40' MUD  
 IH 2563#  
 IF 58-43#  
 ISIP 1536#  
 FF 39-78#  
 FSIP 1525#  
 FH 2523#  
 Temp 112°F  
 CI 6500ppm

DST #4 5205-5220  
 30-60-60-120  
 SB BOB/15 sec  
 NBB  
 SB BOB/immed GTS 57/min  
 TSTM  
 REC:  
 50' GOCM (15g, 25o, 60m)  
 IH 2553#  
 IF 30-25#  
 ISIP 848#  
 FF 22-29#  
 FSIP 664#  
 FH 2475#  
 Temp 114°F  
 CI 9100ppm

DST #5 5228-5237  
 45-60-60-120  
 SB BOB/1 min  
 GTS 2/min into ISI,  
 WBB/ 3 inch  
 SB BOB/30 sec  
 GTS GA 1/8 inch choke  
 7.3 MCFG/10 min  
 8.4 MCFG/20 min  
 9.5 MCFG/30 min  
 10.6 MCFG/40 min  
 11.4 MCFG/50 min  
 12.1 MCFG/60 min  
 GBB, 6 inch  
 REC:  
 250' CGO (25g, 75o)  
 60' GOCM (21g, 35o, 44m)  
 IH 2586#  
 IF 20-67#  
 ISIP 1519#  
 FF 76-134#  
 FSIP 1510#



FH 2522#  
Temp 118°F  
Cl 6800ppm