

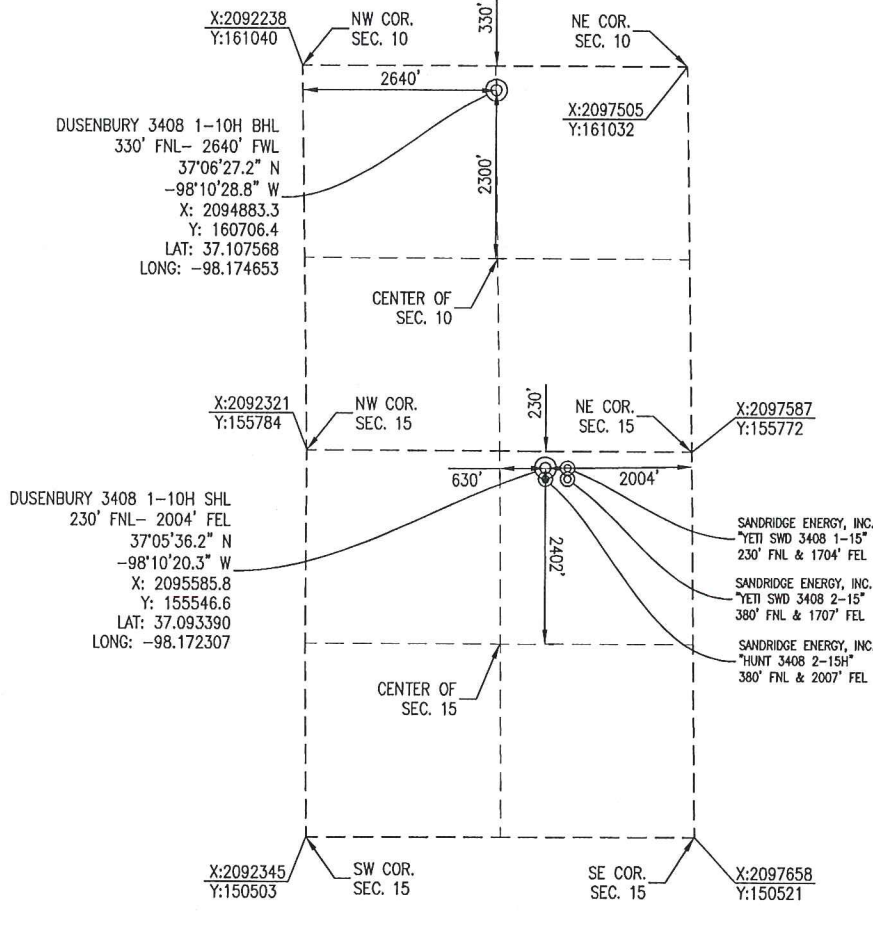


1000 Ledgelawn Drive
 Conway, Arkansas 72034
 501.328.3316 f 501.328.3325 f
 www.craftontull.com

Crafton Tull
 SURVEYING

HARPER COUNTY, KANSAS

230' FNL- 2004' FEL SECTION 15 TOWNSHIP 34S RANGE 08W 6TH P.M.



BOTTOM HOLE INFORMATION PROVIDED BY OPERATOR LISTED AND CORNER COORDINATES ARE TAKEN FROM POINTS SURVEYED IN THE FIELD.

OPERATOR: SANDRIDGE ENERGY, INC.

WELL NO: 1-10H

ELEVATION:
 1388' GR. AT STAKE

LEASE NAME: DUSENBURY 3408

TOPOGRAPHIC & VEGETATION: LOCATION FELL IN A FIELD

GOOD DRILL SITE: YES REFERENCE STAKES OR ALTERNATE LOCATION STAKES SET: NONE

BEST ACCESSIBILITY TO LOCATION: NORTH LINE

DISTANCE & DIRECTION
 FROM HWY JCT OR TOWN: FROM THE JCT. OF OK-2 & SW 70 AVE (±7.5 MILES WEST OF ANTHONY, KS) TRAVEL SOUTH ON SW 70 AVE FOR ±4.0 MILES TO THE NORTHEAST CORNER OF SECTION 15, T34S-R08W.

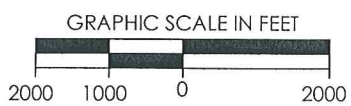
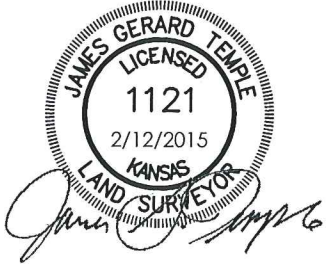
(THE FOLLOWING INFORMATION WAS GATHERED USING A GPS RECEIVER ACCURACY ±2-3 METERS)

GPS DATUM: NAD-27	STATE PLANE COORDINATES:
LAT: 37.093390	ZONE: KS-SOUTH NAD-27
LONG: -98.172307	X: 2095585.8
	Y: 155546.6

DATE STAKED: 11-4-2014

GENERAL NOTES:

THE TIES AND FOOTAGES SHOWN ON THIS PLAT ARE FROM LINES OF OCCUPATION FROM A SURVEY MADE ON THE GROUND AND / OR BEARING AND DISTANCES FROM THE GENERAL LAND OFFICE PLAT OF THE AREA SHOWN AND MAY NOT BE THE ACTUAL PROPERTY CORNERS. THIS PLAT DOES NOT REPRESENT A TRUE BOUNDARY SURVEY. DRILL SITE CONDITION DETERMINATIONS WERE MADE BY SANDRIDGE ENERGY INC. REPRESENTATIVES.



REVISION		SandRidge	
△	MOVED SHL (11-4-2014)	"DUSENBURY 3408 1-10H" PART OF THE NE1/4 OF SECTION 15, T-34-S, R-08-W PROPOSED DRILL SITE HARPER COUNTY, KANSAS	
△	REMOVED BHL (2-12-2015)		
SCALE: 1" = 2000'		DRAWN BY: JWB SHEET NO.: 1 OF 4	
PLOT DATE: 02-12-2015			

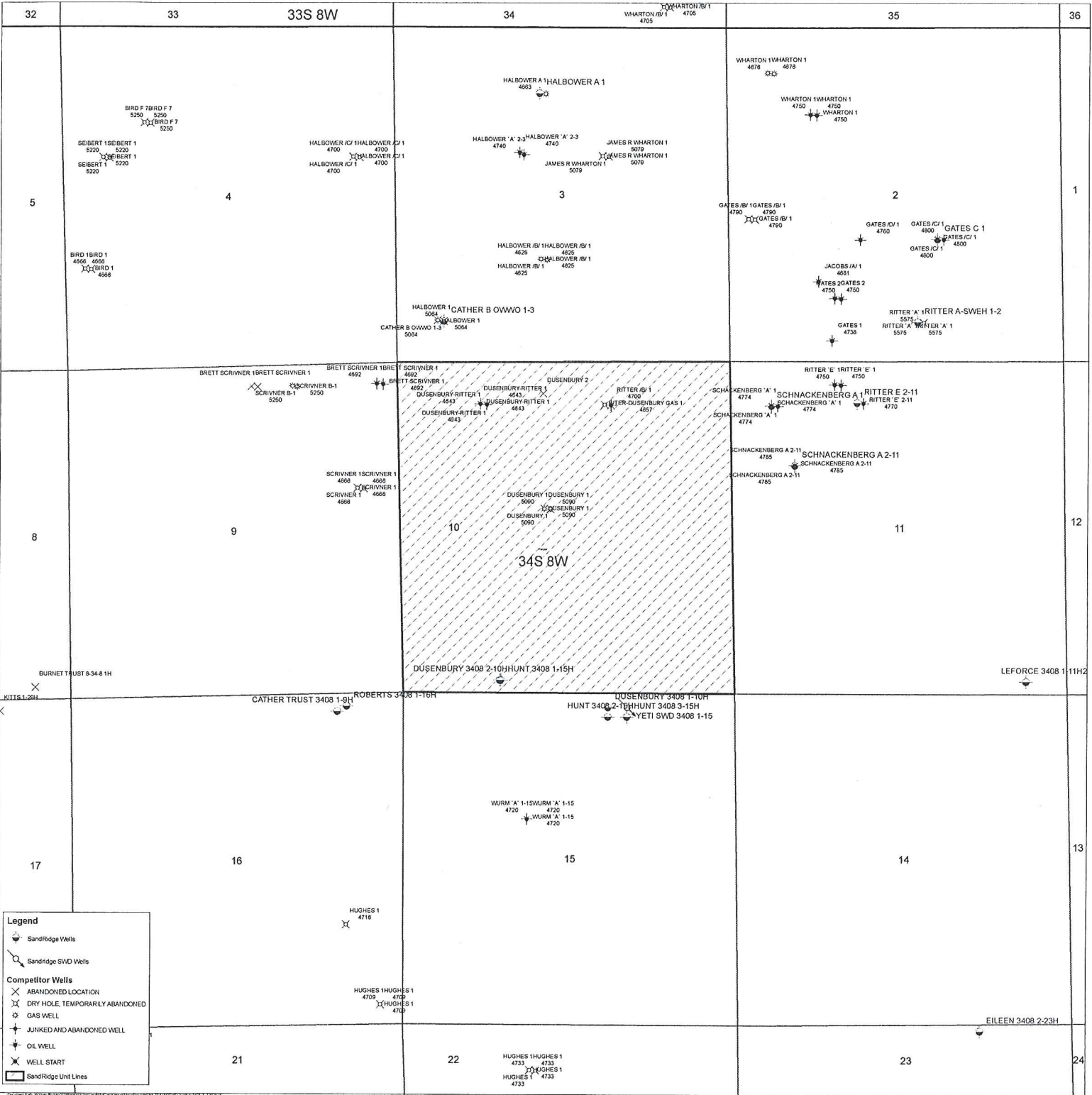
Dusenbury 3408 1-10H
Lease Information Sheet

Unit Description:

All of Section 10-T34S-R8W
Harper County, KS

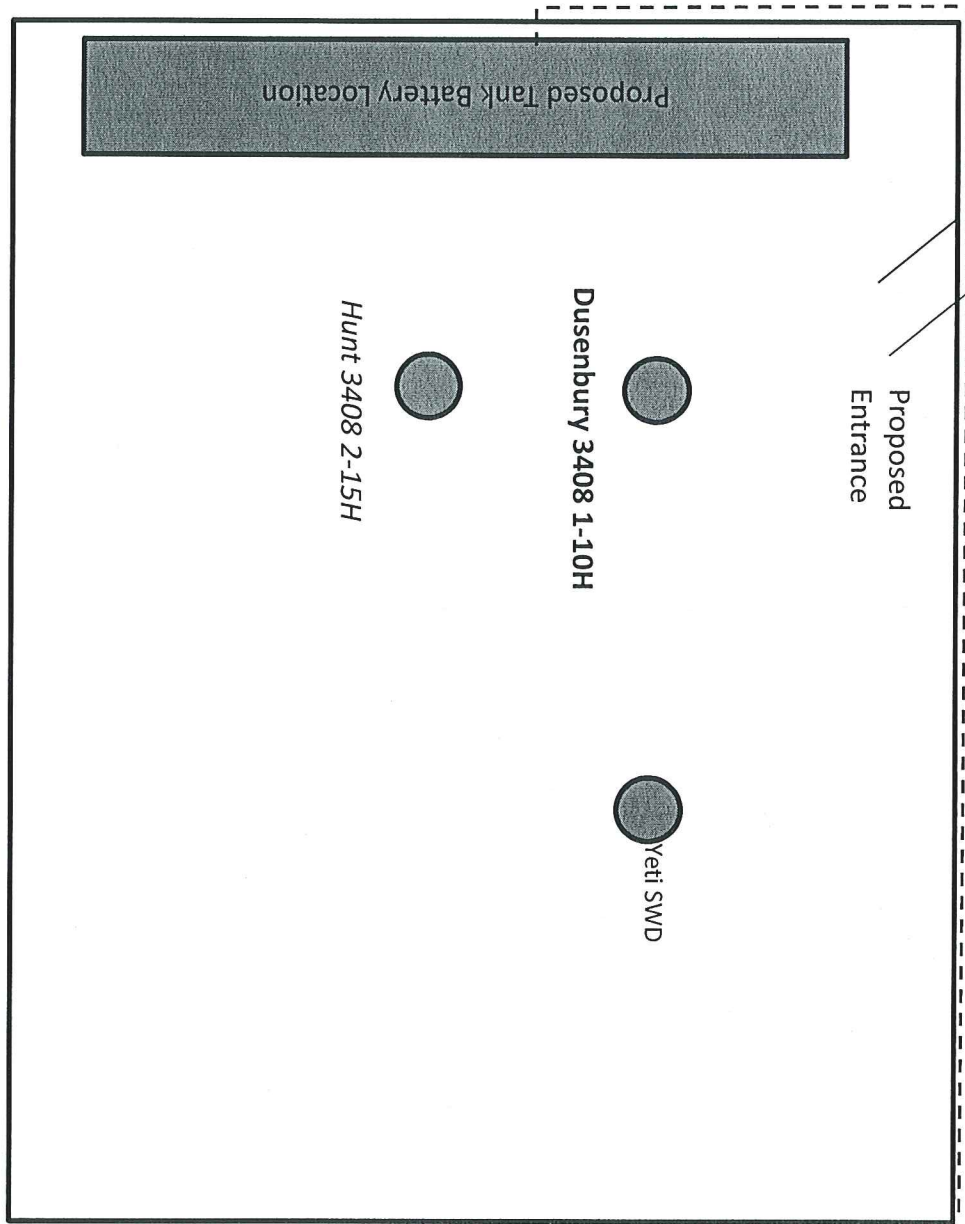
Surface Owners:

SandRidge Exploration and Production, LLC
123 Robert S Kerr Avenue
Oklahoma City, OK 73102



Proposed Electric Line

Dusenbury 3408 1-10H, Hunt 3408 2-15H & Yeti SWD



This is proposed information. Final location of wells, utilities and tank facilities may change. Refer to Kansas survey plat for location of wells.