



TRILOBITE TESTING, INC.

DRILL STEM TEST REPORT

Samuel Gary Jr. & Associates
 1515 Wynkoop St. STE #700
 Denver, CO 80202
 ATTN: Chris Mitchell

36-4S-35W Rawlins, KS

Loeffler #1-36

Job Ticket: 60199

DST#: 1

Test Start: 2014.10.30 @ 23:50:00

GENERAL INFORMATION:

Formation: **Douglas Sand - LKC "**

Deviated: No Whipstock: ft (KB)

Time Tool Opened: 04:02:30

Time Test Ended: 09:41:30

Test Type: Conventional Bottom Hole (Initial)

Tester: Kevin Mack

Unit No: 66

Interval: 4086.00 ft (KB) To 4140.00 ft (KB) (TVD)

Reference Elevations: 3220.00 ft (KB)

Total Depth: 4140.00 ft (KB) (TVD)

3215.00 ft (CF)

Hole Diameter: 7.88 inches Hole Condition: Good

KB to GR/CF: 5.00 ft

Serial #: 8874 Inside

Press@RunDepth: 89.56 psig @ 4087.00 ft (KB)

Capacity: 8000.00 psig

Start Date: 2014.10.30

End Date:

2014.10.31

Last Calib.: 2014.10.31

Start Time: 23:51:00

End Time:

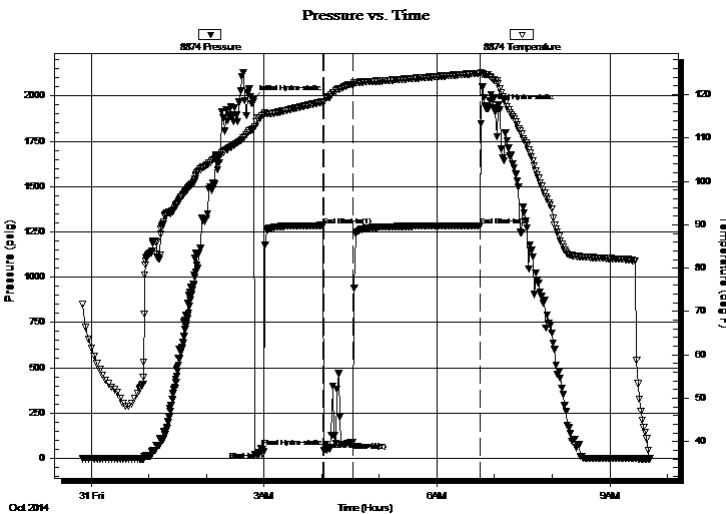
09:41:30

Time On Btm: 2014.10.31 @ 02:48:30

Time Off Btm: 2014.10.31 @ 02:50:30

TEST COMMENT: 10 - IF- 1/4" Blow built to 1 1/4"
 60 - IS- No Return
 30 - FF- Surface Blow started at 3 min. Built to 3 1/2"
 120 - FS- No Return

PRESSURE SUMMARY



Time (Min.)	Pressure (psig)	Temp (deg F)	Annotation
0	1980.44	112.06	Initial Hydro-static
2	20.28	112.60	Final Hydro-static
11	35.77	115.47	Shut-In(1)
73	1285.15	118.35	End Shut-In(1)
74	42.21	118.39	Open To Flow (1)
104	89.56	122.34	Shut-In(2)
236	1283.79	124.95	End Shut-In(2)
243	1931.71	124.64	Final Hydro-static

Recovery

Length (ft)	Description	Volume (bbl)
160.00	Mud 100M	0.79

Gas Rates

	Choke (inches)	Pressure (psig)	Gas Rate (Mcf/d)



**TRILOBITE
TESTING, INC**

DRILL STEM TEST REPORT

FLUID SUMMARY

Samuel Gary Jr. & Associates

36-4S-35W Rawlins, KS

1515 Wynkoop St. STE #700
Denver, CO 80202

Loeffler #1-36

Job Ticket: 60199

DST#: 1

ATTN: Chris Mitchell

Test Start: 2014.10.30 @ 23:50:00

Mud and Cushion Information

Mud Type: Gel Chem

Cushion Type:

Oil API:

deg API

Mud Weight: 9.00 lb/gal

Cushion Length:

ft

Water Salinity:

ppm

Viscosity: 60.00 sec/qt

Cushion Volume:

bbbl

Water Loss: 8.59 in³

Gas Cushion Type:

Resistivity: 0.00 ohm.m

Gas Cushion Pressure:

psig

Salinity: 500.00 ppm

Filter Cake: 1.00 inches

Recovery Information

Recovery Table

Length ft	Description	Volume bbl
160.00	Mud 100M	0.787

Total Length: 160.00 ft Total Volume: 0.787 bbl

Num Fluid Samples: 0

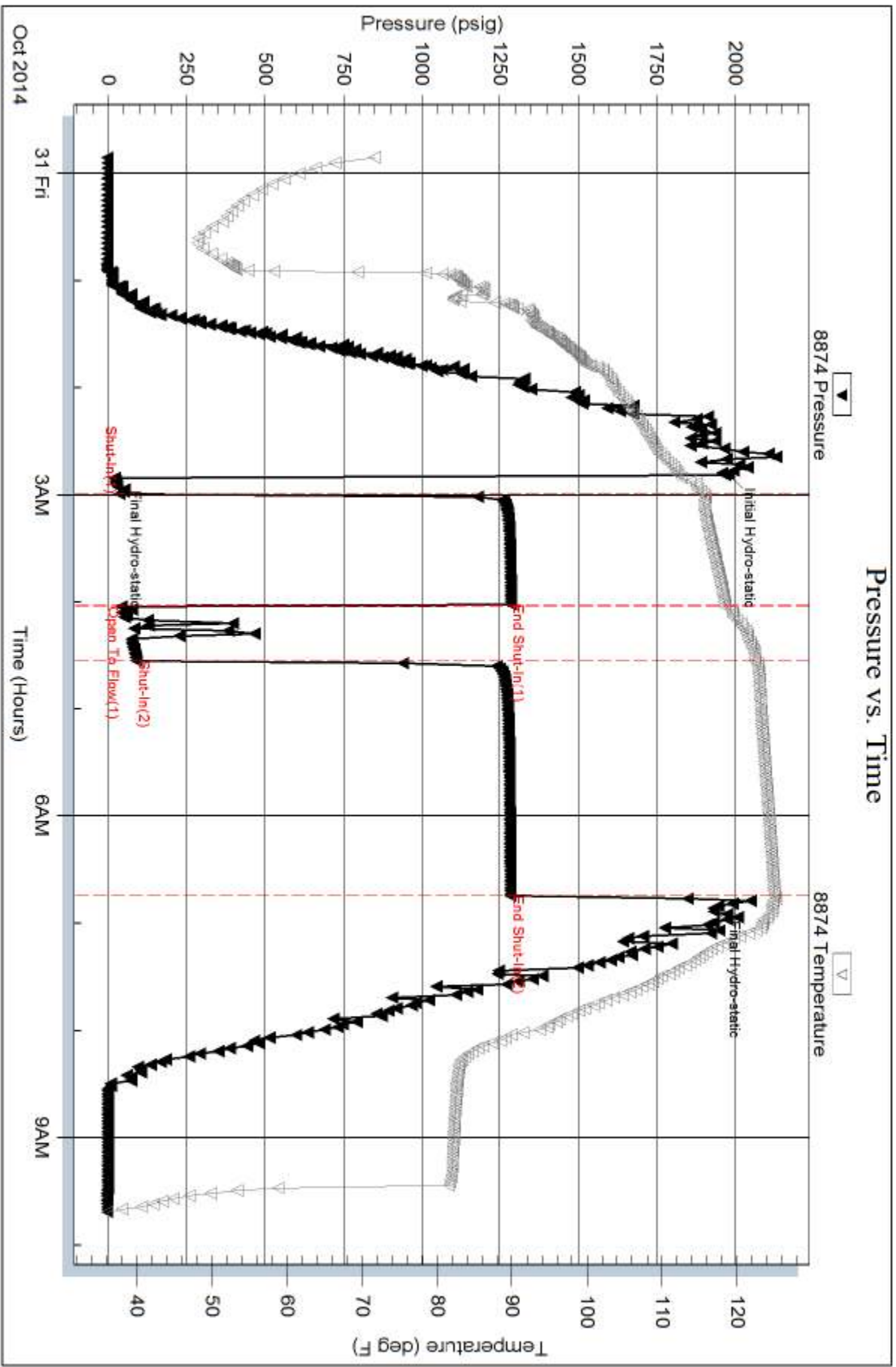
Num Gas Bombs: 0

Serial #:

Laboratory Name:

Laboratory Location:

Recovery Comments:



Serial #: 8520

Fluid

Samuel Gary Jr. & Associates

Loeffler #1-36

DST Test Number: 1

