



**TRILOBITE TESTING, INC.**

# DRILL STEM TEST REPORT

Samuel Gary Jr. & Associates  
 1515 Wynkoop St. STE #700  
 Denver, CO 80202  
 ATTN: Chris Mitchell

**36-4S-35W Rawlins, KS**

**Loeffler #1-36**

Job Ticket: 60200

**DST#: 2**

Test Start: 2014.10.31 @ 15:30:00

## GENERAL INFORMATION:

Formation: **Douglas Sand - LKC "**

Deviated: No Whipstock: ft (KB)

Time Tool Opened: 18:23:00

Time Test Ended: 22:36:30

Test Type: Conventional Bottom Hole (Initial)

Tester: Kevin Mack

Unit No: 66

**Interval: 4086.00 ft (KB) To 4140.00 ft (KB) (TVD)**

Total Depth: 4140.00 ft (KB) (TVD)

Hole Diameter: 7.88 inches Hole Condition: Good

Reference Elevations: 3220.00 ft (KB)

3215.00 ft (CF)

KB to GR/CF: 5.00 ft

**Serial #: 8874 Inside**

Press @ Run Depth: 129.80 psig @ 4087.00 ft (KB)

Start Date: 2014.10.31

End Date:

2014.10.31

Start Time: 15:31:00

End Time:

22:36:30

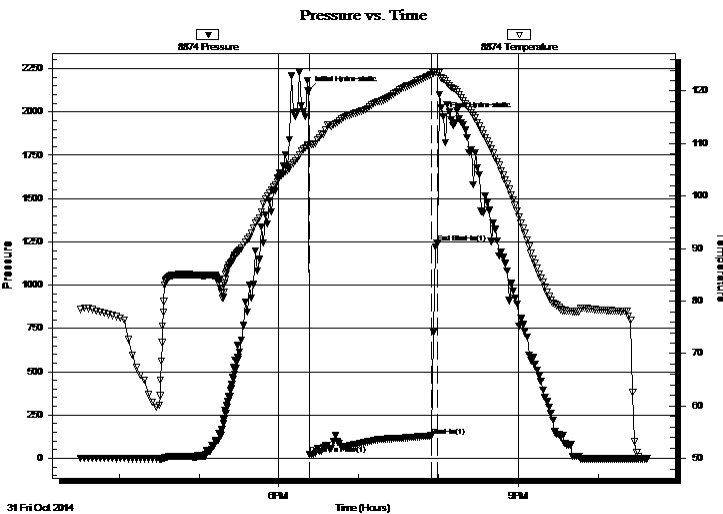
Capacity: 8000.00 psig

Last Calib.: 2014.10.31

Time On Btm: 2014.10.31 @ 18:22:00

Time Off Btm: 2014.10.31 @ 20:03:30

TEST COMMENT: 90 - IF- 1/4" Blow built to BoB in 85 min.



## PRESSURE SUMMARY

Time (Min.)	Pressure (psig)	Temp (deg F)	Annotation
0	2120.57	109.78	Initial Hydro-static
1	20.95	109.67	Open To Flow (1)
93	129.80	123.07	Shut-In(1)
97	1241.99	123.52	End Shut-In(1)
102	1974.35	122.27	Final Hydro-static

## Recovery

Length (ft)	Description	Volume (bbl)
62.00	MW 40M 60W	0.30
62.00	MW 20M 80W	0.30
62.00	MW 50M 50W	0.30
55.00	Mud 100M	0.77

## Gas Rates

	Choke (inches)	Pressure (psig)	Gas Rate (Mcf/d)







**TRILOBITE  
TESTING, INC.**

# DRILL STEM TEST REPORT

**FLUID SUMMARY**

Samuel Gary Jr. & Associates

**36-4S-35W Rawlins, KS**

1515 Wynkoop St. STE #700  
Denver, CO 80202

**Loeffler #1-36**

Job Ticket: 60200

**DST#: 2**

ATTN: Chris Mitchell

Test Start: 2014.10.31 @ 15:30:00

## Mud and Cushion Information

Mud Type: Gel Chem

Cushion Type:

Oil API:

deg API

Mud Weight: 10.00 lb/gal

Cushion Length:

ft

Water Salinity:

35000 ppm

Viscosity: 77.00 sec/qt

Cushion Volume:

bbbl

Water Loss: 7.98 in<sup>3</sup>

Gas Cushion Type:

Resistivity: 0.00 ohm.m

Gas Cushion Pressure:

psig

Salinity: 500.00 ppm

Filter Cake: 1.00 inches

## Recovery Information

Recovery Table

Length ft	Description	Volume bbbl
62.00	MW 40M 60W	0.305
62.00	MW 20M 80W	0.305
62.00	MW 50M 50W	0.305
55.00	Mud 100M	0.772

Total Length: 241.00 ft      Total Volume: 1.687 bbl

Num Fluid Samples: 0

Num Gas Bombs: 0

Serial #:

Laboratory Name:

Laboratory Location:

Recovery Comments: .3 @ 47 deg = 35000ppm

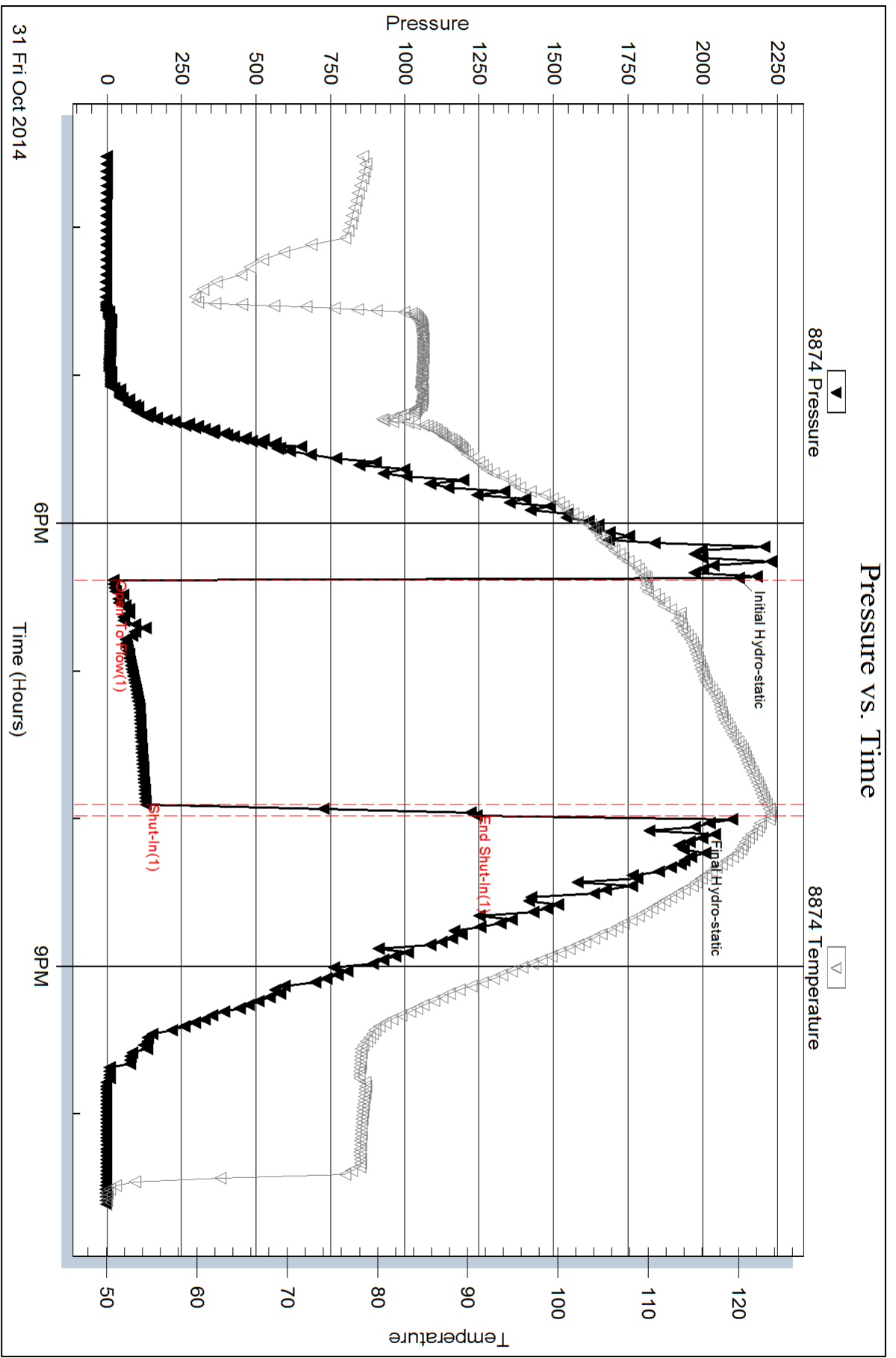
Serial #: 8874

Inside

Samuel Gary Jr. & Associates

Loeffler #1-36

DST Test Number: 2



Triobite Testing, Inc

Ref. No: 60200

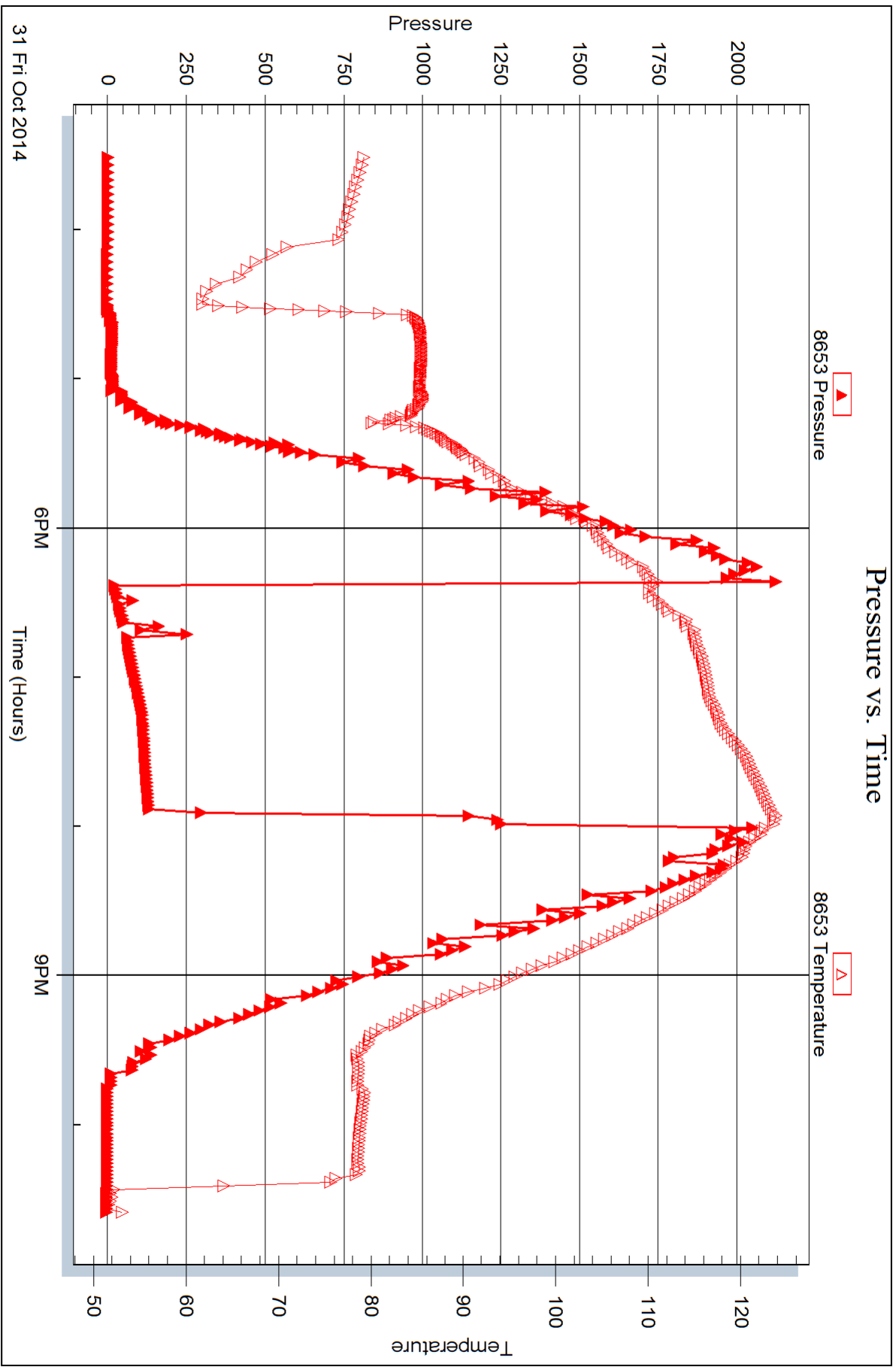
Printed: 2014.11.02 @ 18:40:46

Serial #: 8653

Outside Samuel Gary Jr. & Associates

Loeffler #1-36

DST Test Number: 2



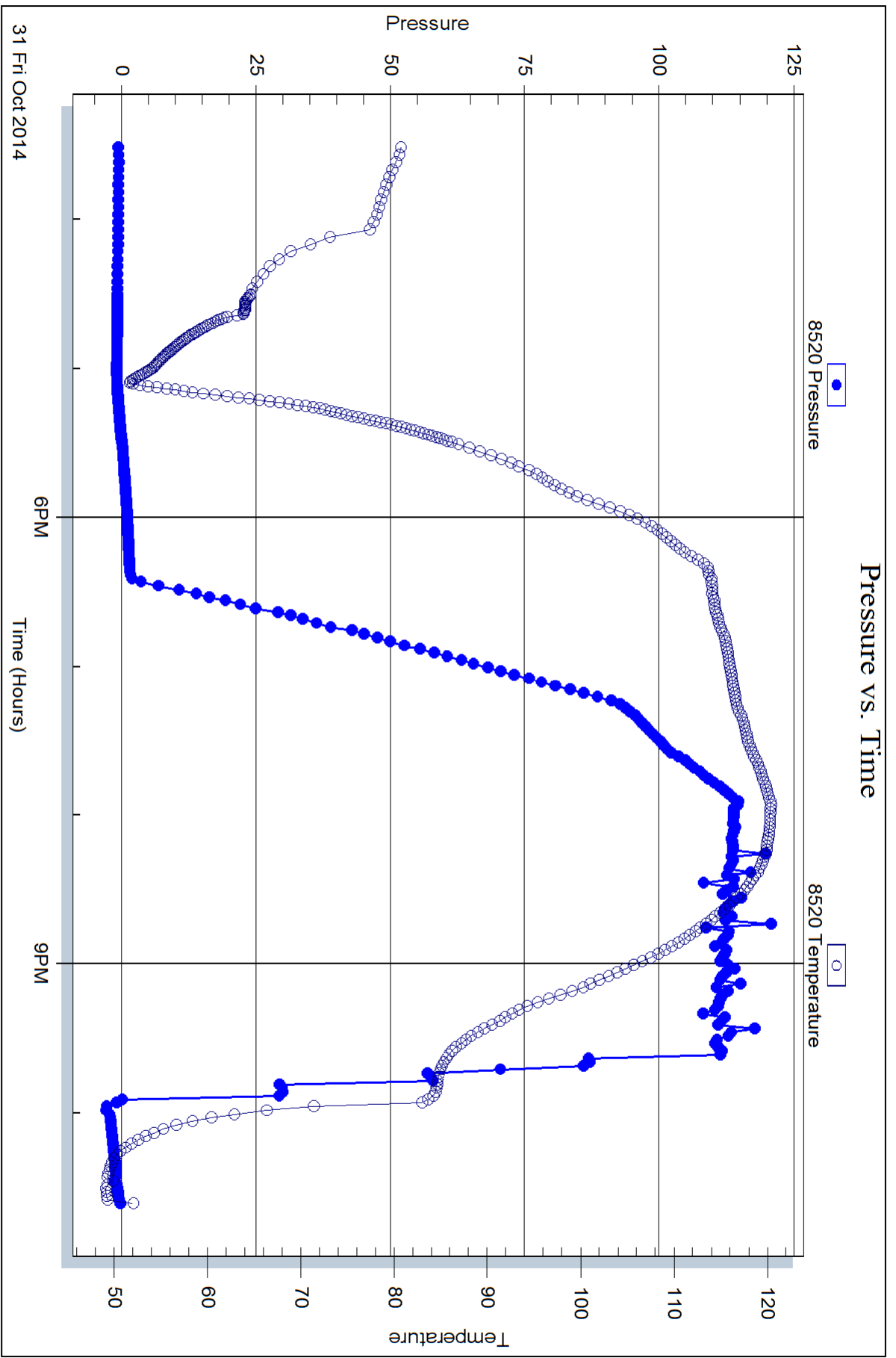
Serial #: 8520

Fluid

Samuel Gary Jr. & Associates

Loeffler #1-36

DST Test Number: 2



Triobite Testing, Inc

Ref. No: 60200

Printed: 2014.11.02 @ 18:40:46