

L.D. DRILLING, INC.
R & B LEASE
SE. 1/4, SECTION 25, T21S, R14W
STAFFORD COUNTY, KANSAS

Directions:

From the intersection of Highway 281 and Highway 19, go 3.0 miles West on Highway 19, then go 2.0 miles North on a county road to the SE corner of Section 25, then go 0.49 miles North to a flagged pole on the west edge of road, then go 0.19 miles West to location.

GRAVEL (NW. 170TH ST.) ROAD

Notes:

1. Set (2) wood stakes at location site.
2. All flagging Red & Yellow.
3. Overhead power available at E. & W. lines and E. 1/4 of N. line and W. 1/4 of S. line, Sec. 25.
4. Kansas One Call System Inc. should be notified before excavation (1-800-344-7233).
5. CAUTION; Various pipelines in Sec. 25.
6. Contact landowner for best access.
7. Location fell 42' NE. of a pivot system wheel track and approximately 2' outside of the system, set alternate 25' east. The end of system is estimated, contact tenant to verify location.

Drillsite Location
R & B Unit #1-25
2598'FSL 1035'FEL

Ground Elevation = 1917

Y = 556950 X = 1912070

State Plane-NAD 27-Kansas South
(Mapping Grade GPS Used)

Latitude 38.195901

Longitude -98.806331

NGS 84-NAD 83

*Alternate Location

(25' east of Loc.)

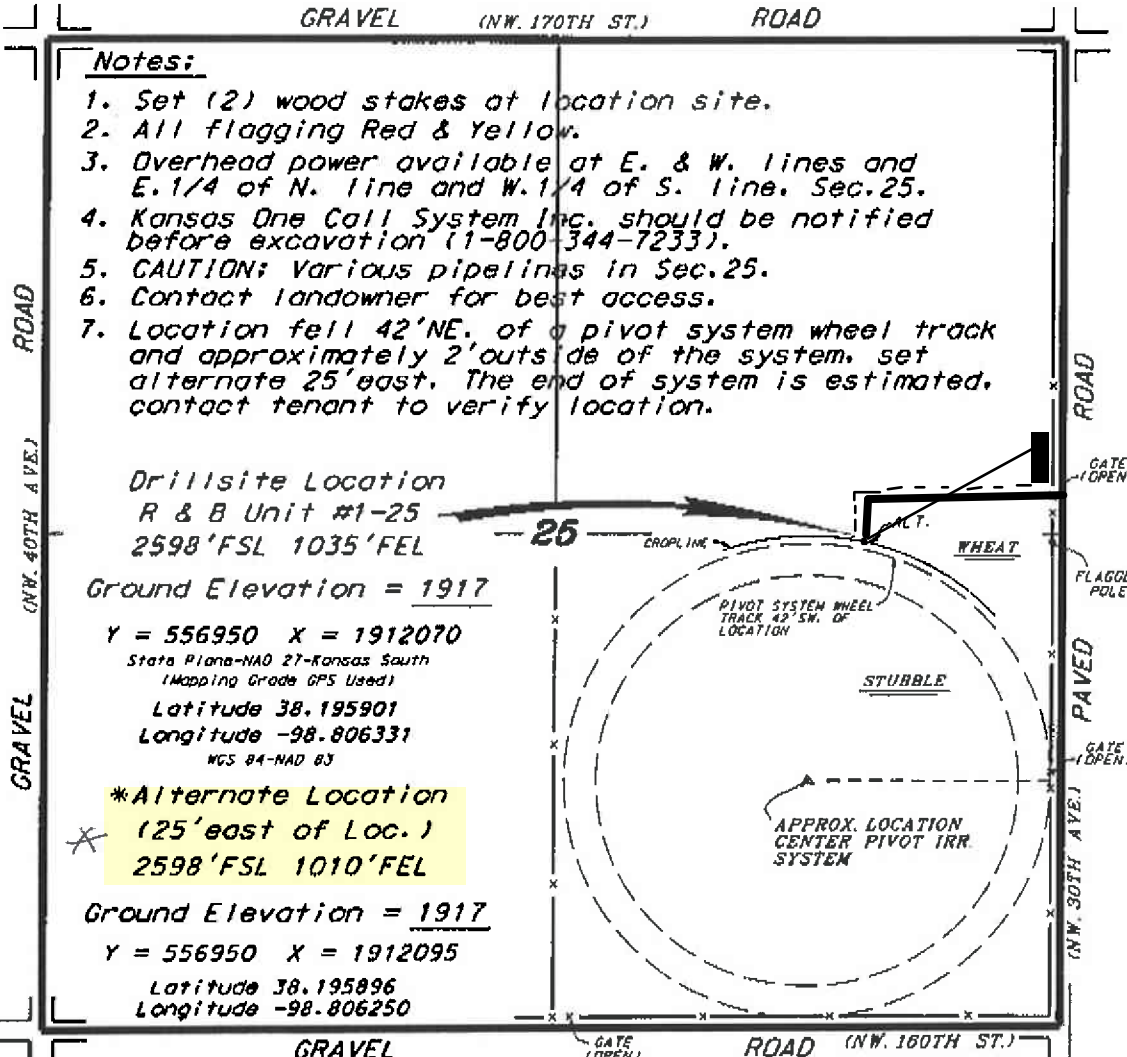
2598'FSL 1010'FEL

Ground Elevation = 1917

Y = 556950 X = 1912095

Latitude 38.195896

Longitude -98.806250



SCALE 1" = 1000'



Ingress and egress to location as shown on this plot is per usage only and may not be legally opened for public use. Contact landowner, tenant and county road department for access.



* Controlling data is based upon the best maps and photographs available to us and upon a regular section of land containing 640 acres.

* Approximate section lines were determined using the normal standard of care of oilfield surveyors practicing in the state of Kansas. The section corners, which establish the precise section lines, were not necessarily located, and the exact location of the drillsite location in the section is not guaranteed. Therefore, the advisor securing this service and accepting this plot and all other parties relying thereon agree to hold Central Kansas Oilfield Services, Inc., its officers and employees harmless from all losses, costs and expenses and legal entities released from any liability from incidental or consequential damages.

* Elevations derived from National Geodetic Vertical Datum.

February 13, 2015