



TRILOBITE TESTING, INC

DRILL STEM TEST REPORT

Shakespeare Oil Co. Inc.

S28-14s-32w Logan/KS

202 W Main
Salem, IL 62881

Ottley #2-28

Job Ticket: 48498

DST#: 4

ATTN: Tim Priest

Test Start: 2015.01.12 @ 11:12:00

GENERAL INFORMATION:

Formation: **Lansing 'I'**
 Deviated: No Whipstock: ft (KB)
 Time Tool Opened: 13:50:10
 Time Test Ended: 19:31:50
 Interval: **3860.00 ft (KB) To 3904.00 ft (KB) (TVD)**
 Total Depth: 3904.00 ft (KB) (TVD)
 Hole Diameter: 7.88 inches Hole Condition: Good
 Test Type: Conventional Bottom Hole (Reset)
 Tester: Chuck Smith
 Unit No: 61
 Reference Elevations: 2682.00 ft (KB)
 2672.00 ft (CF)
 KB to GR/CF: 10.00 ft

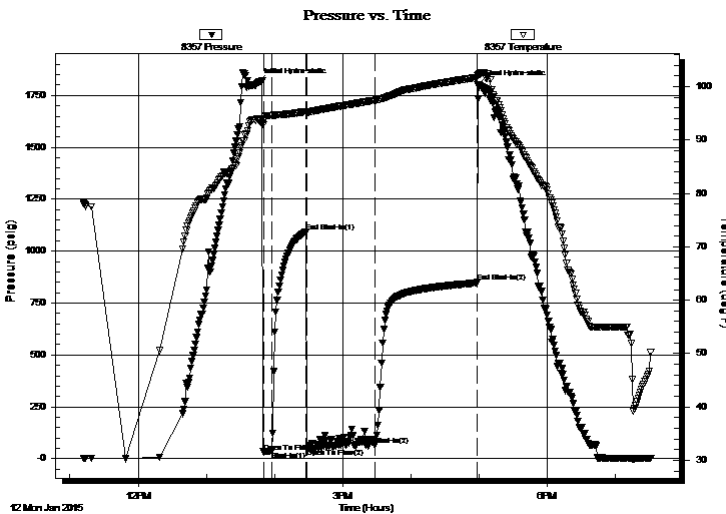
Serial #: 8357

Inside

Press@RunDepth: 63.87 psig @ 3864.00 ft (KB) Capacity: 8000.00 psig
 Start Date: 2015.01.12 End Date: 2015.01.12 Last Calib.: 2015.01.12
 Start Time: 11:12:02 End Time: 19:31:50 Time On Btm: 2015.01.12 @ 13:45:40
 Time Off Btm: 2015.01.12 @ 16:59:00

TEST COMMENT: 7- Tool slid 20' w hile open, bled off initial blow , surface blow throughout.
 30- No return.
 60- 3" Blow .
 90- Weak surface return.

PRESSURE SUMMARY



Time (Min.)	Pressure (psig)	Temp (deg F)	Annotation
0	1813.86	93.82	Initial Hydro-static
5	33.40	92.86	Open To Flow (1)
12	38.35	94.56	Shut-In(1)
42	1090.92	95.32	End Shut-In(1)
43	48.63	95.13	Open To Flow (2)
103	63.87	97.40	Shut-In(2)
193	849.86	101.73	End Shut-In(2)
194	1800.53	102.02	Final Hydro-static

Recovery

Length (ft)	Description	Volume (bbl)
69.00	OCM 20o 80m	0.34
1.00	O 100o	0.00

Gas Rates

	Choke (inches)	Pressure (psig)	Gas Rate (Mcf/d)

* Recovery from multiple tests



**TRILOBITE
TESTING, INC**

DRILL STEM TEST REPORT

FLUID SUMMARY

Shakespeare Oil Co. Inc.

S28-14s-32w Logan/KS

202 W Main
Salem, IL 62881

Ottley #2-28

Job Ticket: 48498

DST#: 4

ATTN: Tim Priest

Test Start: 2015.01.12 @ 11:12:00

Mud and Cushion Information

Mud Type: Gel Chem

Cushion Type:

Oil API:

37 deg API

Mud Weight: 9.00 lb/gal

Cushion Length:

ft

Water Salinity:

ppm

Viscosity: 46.00 sec/qt

Cushion Volume:

bbbl

Water Loss: 6.20 in³

Gas Cushion Type:

Resistivity: ohm.m

Gas Cushion Pressure:

psig

Salinity: 3000.00 ppm

Filter Cake: 1.00 inches

Recovery Information

Recovery Table

Length ft	Description	Volume bbbl
69.00	OCM 20o 80m	0.339
1.00	O 100o	0.005

Total Length: 70.00 ft Total Volume: 0.344 bbl

Num Fluid Samples: 0

Num Gas Bombs: 0

Serial #:

Laboratory Name:

Laboratory Location:

Recovery Comments: API: 34 @ 30 Degrees F = 37

