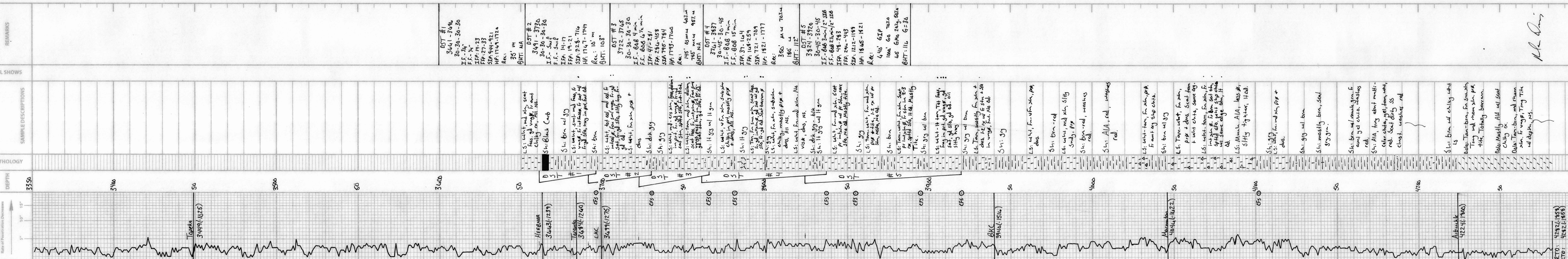


Marc A. Downing Consulting Petroleum Geologist		Geologic Report Drilling Time and Sample Log			
Operator H&C Oil Operating, Inc.		Elevation KB 2424 DF GL 2416		Lease North Fork Farms No. 3-1	
API # 15-195-22973-0000		Casing Record Surface 8 5/8" @ 223' Production 5 1/2" @ 4281'			
Field Wildcat		Location 990' FNL & 330' FWL			
Sec. 3 Twp. 12s Rge. 23w		Electrical Surveys CNL/CDL, DIL, MEL, Sonic			
County Trego State Kansas		Perforate: LKC K: 3896-3900 LKC H: 3835-3838 (Before abandonment)			
Formation	Sample tops	Log Tops	Datum	Struct Comp	
Top Anhydrite	1879	1877	+547	FL	
Base Anhydrite	1925	1922	+502	-3	
Topeka	3449	3447	-1023	-1	
Heebner	3663	3660	-1236	+5	
Toronto	3684	3680	-1256	+7	
LKC	3699	3696	-1272	+3	
BKC	3940	3938	-1514	Not Reached	
Marmaton	4046	4044	-1620	Not Reached	
Arbuckle	4224	4220	-1796	Not Reached	
Total Depth	4282	4282	-1858		
Reference Well For Structural Comparison Niedens 'A' #1		F&M Oil Co. NE SW SW		Sec. 6-12s-23w	

Drilling Contractor Completed 12-8-14		Discovery Drilling, Rig #1 Completed 12-17-14	
Samples Saved From 3650 To RTD		Samples Examined From 3650 To RTD	
Drilling Time Kept From 3350 To RTD		Geological Supervision From 3350 To RTD	

Summary and Recommendations
Due to structural position, DST recovery, and log evaluation, it was decided to set 5 1/2" production casing for completion.

Respectfully Submitted,
Marc A. Downing



M.A. Downing

RTD: 4282 (-1858)
LTD: 4282 (-1858)