

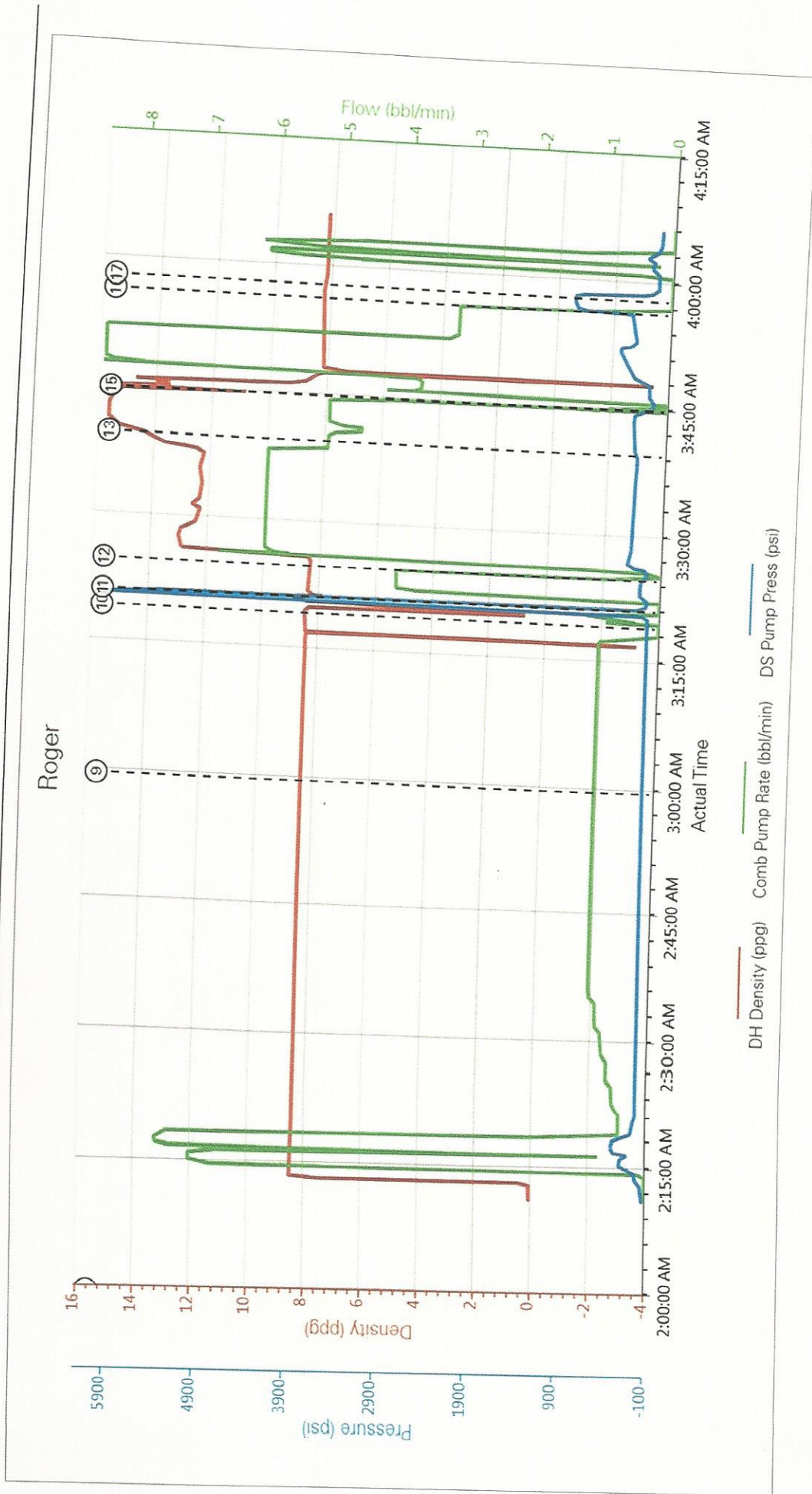
1.5 Job Event Log

Type	Seq. No.	Activity	Graph Label	Date	Time	Source	Downhole Density (ppg)	Combined Pump Rate (bbbl/min)	Driv-Side Pump Pressure (psi)	Comments
Event	1	Call Out	Call Out	12/3/2014	17:30:00	USER				Andrew Chambers,Scott Applebee,Larry Kirkland,Martin Esparza on location time1:00 pm
Event	2	Pre-Convoy Safety Meeting	Pre-Convoy Safety Meeting	12/3/2014	18:00:00	USER				Discussed safe driving
Event	3	Depart Location	Depart Location	12/3/2014	18:15:00	USER				Andrew Chambers,Scott Applebee,Larry Kirkland,Martin Esparza
Event	4	Arrive At Loc	Arrive At Loc	12/3/2014	23:00:00	USER				Met with customer rep went over where to spot equipment,Muster area,s,red zones,and calculations
Event	5	Assessment Of Location Safety Meeting	Assessment Of Location Safety Meeting	12/3/2014	23:30:00	USER				Identified,red zones,trip hazards,muster area,s,over head hazards,and pressurized pumping area,s
Event	6	Pre-Rig Up Safety Meeting	Pre-Rig Up Safety Meeting	12/4/2014	01:00:00	USER				Discussed,red zones,trip hazards,muster area,s,over head hazards,and pressurized pumping area,s
Event	7	Rig-Up Equipment	Rig up equipment	12/4/2014	01:15:00	USER				Rigged up ground
Event	8	Rig-Up Completed	Rig-Up Completed	12/4/2014	02:00:00	USER				Rig up completed safely
Event	9	Pre-Job Safety Meeting	Pre-Job Safety Meeting	12/4/2014	03:00:00	USER	8.41	0.90	17.00	Discussed,red zones,trip hazards,muster area,s,over head hazards,and pressurized pumping area,s

Type	Seq. No.	Activity	Graph Label	Date	Time	Source	Downhole Density (ppg)	Combined Pump Rate (bbl/min)	Driv-Side Pump Pressure (psi)	Comments
Event	10	Test Lines	Test Lines	12/4/2014	03:19:29	COM7	8.48	0.00	17.00	Tested lines to 3000 PSI test successful
Event	11	Pump Spacer 1	Pump Spacer 1	12/4/2014	03:21:25	COM7	8.45	0.00	52.00	Pumped 10 bbl fresh water spacer
Event	12	Pump Lead Cement	Pump Lead Cement	12/4/2014	03:25:08	COM7	12.34	0.00	50.00	87 bbl of Extendamem(12.4lb/gal,2 .13cu.ft/sk,11.87gal/sk)
Event	13	Pump Tail Cement	Pump Tail Cement	12/4/2014	03:39:56	COM7	15.6	5.10	239.00	Pumped 33 bbl of Swiftcem(15.6lb/gal,1.2 1cu.ft/sk,5.43gak/sk)
Event	14	Drop Top Plug	Drop Top Plug	12/4/2014	03:45:16	COM7	13.56	0.00	43.00	Halliburton top plug left cementing head
Event	15	Pump Displacement	Pump Displacement	12/4/2014	03:45:19	COM7	13.66	0.00	41.00	Pumped 58 bbl fresh water displacement
Event	16	Bump Plug	Bump Plug	12/4/2014	03:56:50	COM7	8.25	0.00	915.00	Bumped plug at calculated displacement
Event	17	Other	check floats	12/4/2014	03:58:21	USER	8.25	0.00	928.00	Floats held .5 bbl bled back,30 bbl cement returns to surface
Event	18	Pre-Rig Down Safety Meeting	Pre-Rig Down Safety Meeting	12/4/2014	05:00:00	USER				Discussed,red zones,trip hazards,muster area,s,over head hazards,and pressurized pumping area,s
Event	19	Rig-Down Equipment	Rig-Down Equipment	12/4/2014	05:30:00	USER				Rigged down ground
Event	20	Rig-Down Completed	Rig-Down Completed	12/4/2014	06:15:00	USER				Rig down completed safely
Event	21	Pre-Convoy Safety Meeting	Pre-Convoy Safety Meeting	12/4/2014	06:30:00	USER				Discussed safe driving
Event	22	Depart Location	Depart Location	12/4/2014	07:00:00	USER				Andrew Chambers,Scott Applebee,Larry Kirkland,Martin Esparza

2.0 Custom Graphs

2.1 Custom Graph



The Road to Excellence Starts with Safety

Sold To #: 372073	Ship To #: 3595844	Quote #: 0021966646	Sales Order #: 0901885294
Customer: TAPSTONE ENERGY LLC		Customer Rep: Dale James	
Well Name: ROGER 19-33-7	Well #: 2H	API/UWI #: 15-077-22096-01	
Field:	City (SAP): ANTHONY	County/Parish: HARPER	State: KANSAS
Legal Description: NE NW NW NE-30-33S-7W-260FNL-2190FEL			
Contractor: NOMAC		Rig/Platform Name/Num: NOMAC 245	
Job BOM: 7521			
Well Type: HORIZONTAL OIL			
Sales Person: HALAMERICA\HX25353		Srvc Supervisor: Andrew Chambers	
Job			

Formation Name	
Formation Depth (MD)	Top Bottom
Form Type	BHST
Job depth MD	800ft Job Depth TVD
Water Depth	Wk Ht Above Floor
Perforation Depth (MD)	From To

Well Data										
Description	New / Used	Size in	ID in	Weight lbm/ft	Thread	Grade	Top MD ft	Bottom MD ft	Top TVD ft	Bottom TVD ft
Open Hole Section			12.25				0	800		
Casing	3	9.625	8.921	36	LTC	J-55	0	800		

Tools and Accessories									
Type	Size in	Qty	Make	Depth ft	Type	Size in	Qty	Make	
Guide Shoe	9.625			800	Top Plug	9.625		HES	
Float Shoe	9.625				Bottom Plug	9.625		HES	
Float Collar	9.625				SSR plug set	9.625		HES	
Insert Float	9.625				Plug Container	9.625		HES	
Stage Tool	9.625				Centralizers	9.625		HES	

Miscellaneous Materials									
Gelling Agt	Conc	Surfactant	Conc	Acid Type	Qty	Conc			
Treatment Fld	Conc	Inhibitor	Conc	Sand Type	Size	Qty			

Fluid Data										
Stage/Plug #: 1										
Fluid #	Stage Type	Fluid Name	Qty	Qty UoM	Mixing Density lbm/gal	Yield ft3/sack	Mix Fluid Gal	Rate bbl/min	Total Mix Fluid Gal	
1	Water Spacer	Water Spacer	10	bbl	8.33			5		
Stage/Plug #: 2										
Fluid #	Stage Type	Fluid Name	Qty	Qty UoM	Mixing Density lbm/gal	Yield ft3/sack	Mix Fluid Gal	Rate bbl/min	Total Mix Fluid Gal	
2	Lead Cement	EXTENDACEM (TM) SYSTEM	230	sack	12.4	2.13		6	11.86	

0.25 lbm		POLY-E-FLAKE (101216940)							
3 %		CALCIUM CHLORIDE, PELLET, 50 LB (101509387)							
Fluid #	Stage Type	Fluid Name	Qty	Qty UoM	Mixing Density lbm/gal	Yield ft ³ /sack	Mix Fluid Gal	Rate bbl/mi n	Total Mix Fluid Gal
3	Tail Cement	SWIFTCEM (TM) SYSTEM	150	sack	15.6	1.21		5	5.39
2 %		CALCIUM CHLORIDE, PELLET, 50 LB (101509387)							
0.1250 lbm		POLY-E-FLAKE (101216940)							
Fluid #	Stage Type	Fluid Name	Qty	Qty UoM	Mixing Density lbm/gal	Yield ft ³ /sack	Mix Fluid Gal	Rate bbl/mi n	Total Mix Fluid Gal
4	Displacement	Displacement	57.6	bbl	8.33			8	
Cement Left In Pipe	Amount	42 ft		Reason				Shoe Joint	
Mix Water:	pH ##	Mix Water Chloride: ## ppm		Mix Water Temperature: ## °F °C					
Cement Temperature:	## °F °C	Plug Displaced by: ## lb/gal kg/m3 XXXX		Disp. Temperature: ## °F °C					
Plug Bumped?	Yes/No	Bump Pressure: #### psi MPa		Floats Held? Yes/No					
Cement Returns:	## bbl m3	Returns Density: ## lb/gal kg/m3		Returns Temperature: ## °F °C					
Comment									