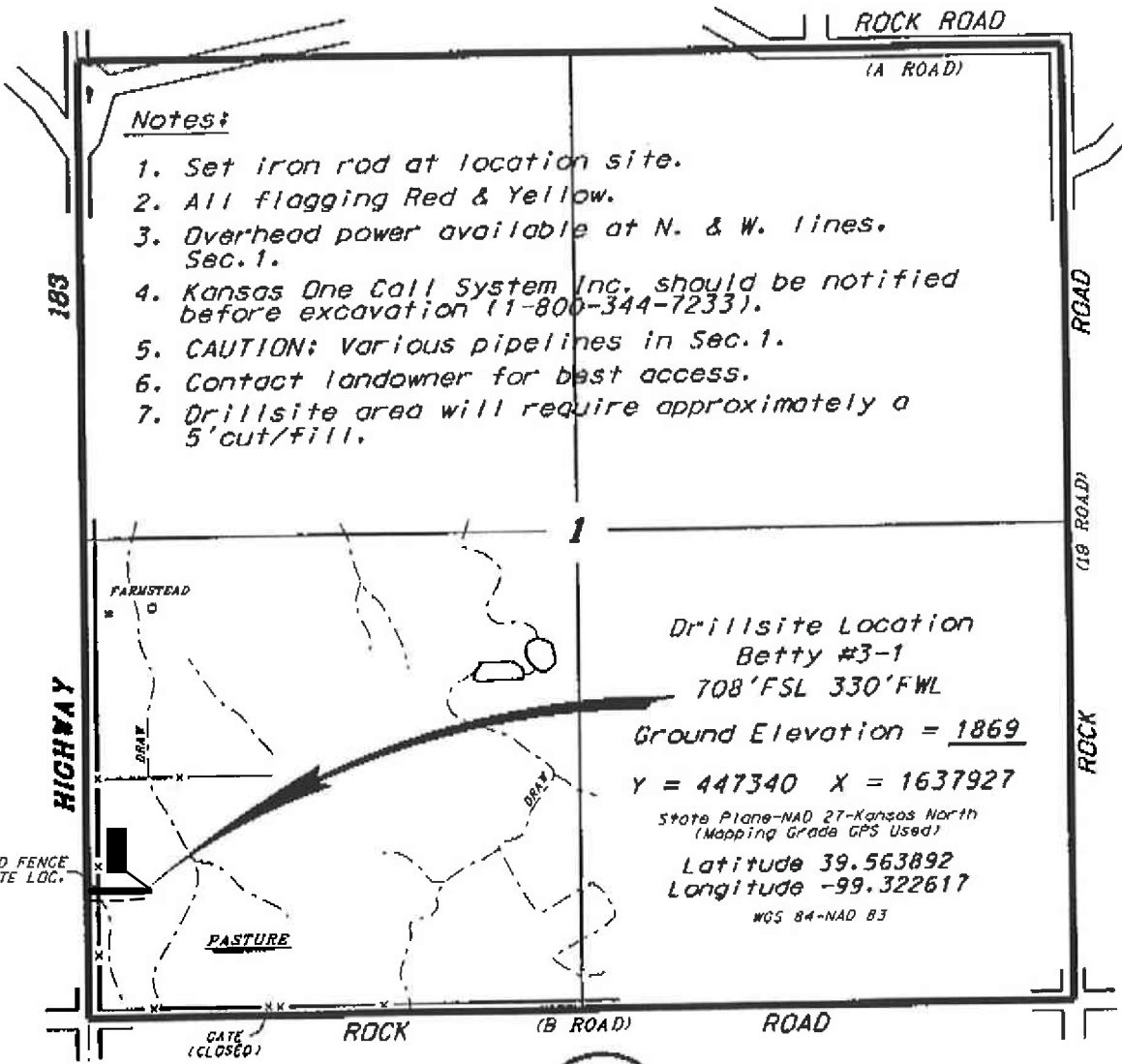


L.D. DRILLING, INC.
BETTY LEASE
SW. 1/4, SECTION 1, T6S, R18W
ROOKS COUNTY, KANSAS

Directions:

From the intersection of Highway 183 and Highway 24 in Stockton, Kansas go 8.0 miles North on Highway 183 to the SW. corner of Section 1, then go 0.13 miles North to a flagged r/w fence east of Highway, then go 0.06 miles East to location.

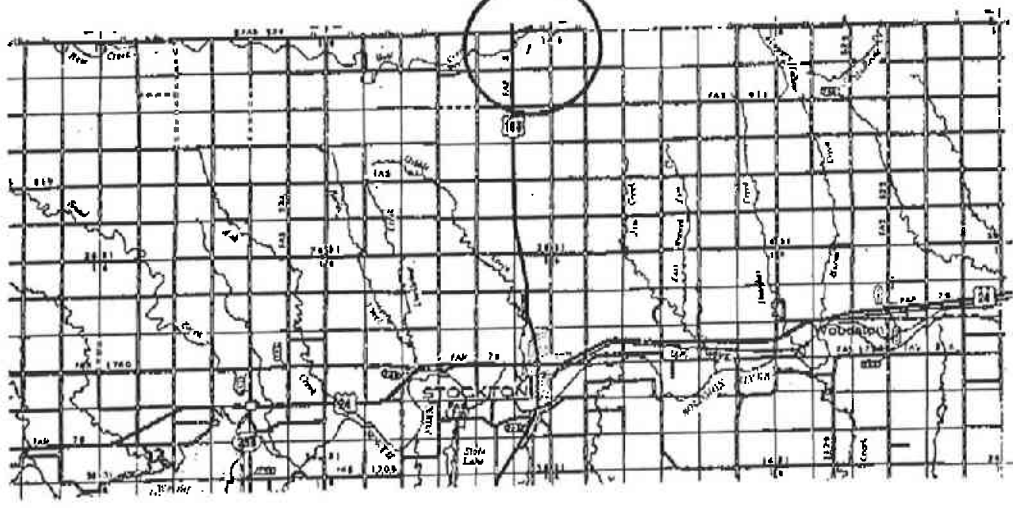
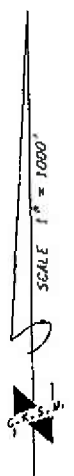


Notes:

1. Set iron rod at location site.
2. All flagging Red & Yellow.
3. Overhead power available at N. & W. lines. Sec. 1.
4. Kansas One Call System Inc. should be notified before excavation (1-800-344-7233).
5. CAUTION: Various pipelines in Sec. 1.
6. Contact landowner for best access.
7. Drillsite area will require approximately a 5' cut/fill.

Drillsite Location
Betty #3-1
708' FSL 330' FWL
Ground Elevation = 1869
Y = 447340 X = 1637927
 State Plane-NAD 27-Kansas North
 (Mapping Grade GPS Used)
Latitude 39.563892
Longitude -99.322617
 NGS 84-NAD 83

* Ingress and egress to location as shown on this plot is per usage only and may not be legally opened for public use. Contact landowner, tenant and county road department for access.



* Controlling data is based upon the best maps and photographs available to us and upon a regular section of land containing 640 acres.
 * Approximate section lines were determined using the normal standard of care of a field surveyor practicing in the state of Kansas. The section corners, which establish the precise section lines, were not necessarily located, and the exact location of the drillsite location in the section is not guaranteed. Therefore, the operator, securing this service and accepting this plot and all other data is relying thereon agree to hold Central Kansas Oilfield Services, Inc., its officers and employees harmless from all losses, costs and expenses and said entities released from any liability from incidental or consequential damages.
 * Elevations derived from national Geodetic Vertical Datum.

February 24, 2015