

# Saman Sharifaie

## Petroleum Geologist

### GEOLOGIST'S REPORT

#### DRILLING TIME AND SAMPLE LOG

COMPANY **Marlin Drilling Co., Inc.**  
LEASE **Landbunger "A" #1-6**

FIELD **Wildcat**  
LOCATION **3307 FSL & 1980 FEL**  
SEC **6** TWP **S** R **35W**  
COUNTY **Randolph** STATE **Kansas**

CONTRACTOR **Marlin Drilling #2**  
RTD **4540'** LITD **4542'**  
MUD UP **3222'** TYPE MUD **Chemical**

SAMPLES SAVED FROM **3520'** TO RTD  
DRILLING TIME KEPT FROM **3520'** TO RTD  
SAMPLES EXAMINED FROM **3520'** TO RTD

GEOLOGICAL SUPERVISION FROM **3220'**  
REFERENCE WELL **MDCI - Verna Poore #1-7**

ELEVATIONS  
KB **3212'**  
DF \_\_\_\_\_  
GL **3201'**  
Measurments Are All From Kelly Bushing  
CASING  
CONDUIT \_\_\_\_\_  
SURFACE **8-5/8" at 265'**  
PRODUCTION **5-1/2" at 532'**  
ELECTRICAL SURVEYS  
CND; DIL; MEL; SWIC

FORMATION  
Sample Tops \_\_\_\_\_ E-log Tops \_\_\_\_\_  
Strat Pos. \_\_\_\_\_

Amhydrite	3134 (+78)	3136 (+76)	-9
Base Anhydrite	3165 (+47)	3166 (+46)	-4
Neva	3628 (+16)	3628 (+16)	-6
Foraker	3740 (-528)	3740 (-528)	-9
Foraker	3925 (-740)	3925 (-741)	-9
Orread	4065 (-855)	4062 (-850)	-4
Lansing	4172 (-960)	4170 (-958)	-3
BKC	4442 (-1230)	4437 (-1225)	-6

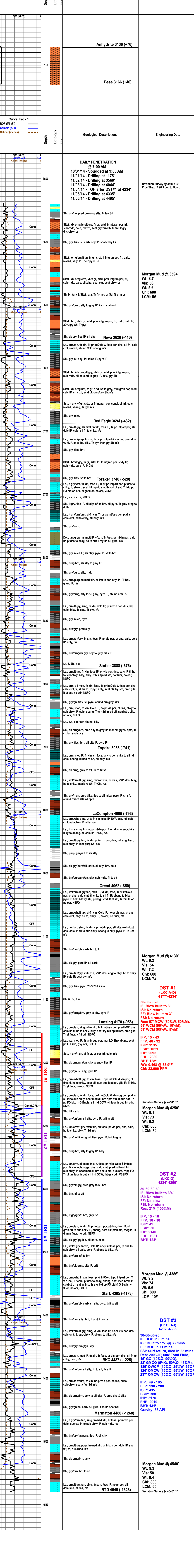
REMARKS Due to shows of oil in multiple potential pay zones and positive DST#3 results (LKC H-J), it is recommended and agreed upon by all parties that production casing be set to further evaluate this well.

Respectfully Submitted,

API #15-153-21066

Saman Sharifaie  
Petroleum Geologist

\*Tops have been adjusted to electric logs



**Engineering Data**

Deviation Survey @ 3506': 1/2  
Pipe Strap: 2.96' Long to Board

**Morgan Mud @ 3594'**  
Wt: 8.7  
Vis: 56  
WI: 5.6  
Chl: 600  
LCM: 6#

**Morgan Mud @ 4130'**  
Wt: 9.2  
Vis: 64  
WI: 7.2  
Chl: 700  
LCM: 7#

**DST #1 (LKC A-D) 4177'-4234'**  
30-60-60-90  
IF: Blow built to 3"  
ISI: No return  
FF: Blow built to 3"  
FSI: No return  
Rec: 57' MCW (50%W, 50%M), 59' WCM (90%W, 10%M), 59' WCM (95%W, 5%M)

IFP: 15 - 43  
FFP: 48 - 92  
ISIP: 1195  
FSI: 1021  
IHP: 2095  
FHP: 2080  
BHT: 128°  
RW: 0.468 @ 38.9°F  
Chl: 22,000 PPM

Deviation Survey @ 4234': 1/2

**Morgan Mud @ 4250'**  
Wt: 9.1  
Vis: 73  
WI: 5.2  
Chl: 800  
LCM: 6#

**DST #2 (LKC G) 4234'-4290'**  
30-60-60-60  
IF: Blow built to 3/4"  
ISI: No return  
FF: No blow  
FSI: No return  
Rec: 2' M (100%M)

IFP: 15 - 16  
FFP: 16 - 16  
ISIP: 41  
FSIP: 30  
IHP: 2140  
FHP: 1931  
BHT: 124°

**Morgan Mud @ 4386'**  
Wt: 9.2  
Vis: 74  
WI: 5.6  
Chl: 800  
LCM: 10#

**DST #3 (LKC H-J) 4292'-4386'**  
30-60-60-90  
IF: BOB in 6"  
ISI: Built to 1 1/2" @ 33 mins  
FF: BOB in 11 mins  
FSI: Surf return, dled in 22 mins  
Rec: 200' GIP, 605' Total Fluid, 15' GO (10%G, 90%O), 38' GMCO (5%G, 50%O, 45%M), 189' OMCW (15%O, 25%W, 65%M), 126' OMCW (10%O, 55%W, 30%M), 237' OMCW (10%O, 65%W, 25%M)

IFP: 49 - 185  
FFP: 190 - 288  
ISIP: 435  
FSIP: 380  
IHP: 2175  
FHP: 2010  
BHT: 131°  
Gravity: 33 API

**Morgan Mud @ 4540'**  
Wt: 9.3  
Vis: 58  
WI: 6.4  
Chl: 800  
LCM: 6#

Deviation Survey @ 4540': 1/2