



**TRILOBITE TESTING, INC.**

# DRILL STEM TEST REPORT

Herman L. Loeb LLC  
 P.O>Box 838  
 Lawrenceville Il.62439  
 ATTN: Keith Revis

**27-26s-15w Pratt Ks.**  
**Kodiak A#1-27**  
 Job Ticket: 59742 **DST#: 1**  
 Test Start: 2015.02.18 @ 12:57:42

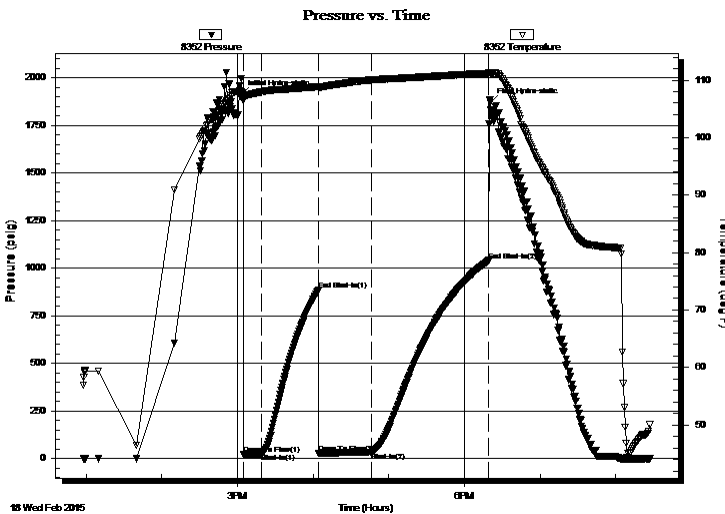
## GENERAL INFORMATION:

Formation: **Toronto**  
 Deviated: No Whipstock: ft (KB)  
 Time Tool Opened: 15:04:42  
 Time Test Ended: 20:26:57  
 Interval: **93710.0 ft (KB) To 3881.00 ft (KB) (TVD)**  
 Total Depth: 3881.00 ft (KB) (TVD)  
 Hole Diameter: 7.88 inches Hole Condition: Fair  
 Test Type: Conventional Bottom Hole (Initial)  
 Tester: Gary Pevoteaux  
 Unit No: 80  
 Reference Elevations: 2053.00 ft (KB)  
 2044.00 ft (CF)  
 KB to GR/CF: 9.00 ft

**Serial #: 8352 Outside**  
 Press @ Run Depth: 33.03 psig @ 3711.00 ft (KB) Capacity: 8000.00 psig  
 Start Date: 2015.02.18 End Date: 2015.02.18 Last Calib.: 2015.02.18  
 Start Time: 12:57:47 End Time: 20:26:56 Time On Btm: 2015.02.18 @ 15:03:12  
 Time Off Btm: 2015.02.18 @ 18:20:27

TEST COMMENT: IF:vWeak blow . 1 1/2" decreasing.  
 IS!No blow .  
 FF:Weak surge/ No blow .  
 FS!No blow .

## PRESSURE SUMMARY



Time (Min.)	Pressure (psig)	Temp (deg F)	Annotation
0	1913.53	107.82	Initial Hydro-static
2	21.48	106.76	Open To Flow (1)
16	27.05	107.97	Shut-In(1)
61	883.65	108.89	End Shut-In(1)
62	28.68	108.62	Open To Flow (2)
103	33.03	110.03	Shut-In(2)
196	1040.71	111.20	End Shut-In(2)
198	1869.46	111.26	Final Hydro-static

## Recovery

Length (ft)	Description	Volume (bbl)
35.00	Drig.mud	0.17

## Gas Rates

Choke (inches)	Pressure (psig)	Gas Rate (Mcf/d)



**TRILOBITE TESTING, INC.**

# DRILL STEM TEST REPORT

Herman L. Loeb LLC  
 P.O>Box 838  
 Lawrenceville IL.62439  
 ATTN: Keith Revis

**27-26s-15w Pratt Ks.**  
**Kodiak A#1-27**  
 Job Ticket: 59742 **DST#: 1**  
 Test Start: 2015.02.18 @ 12:57:42

## GENERAL INFORMATION:

Formation: **Toronto**  
 Deviated: No Whipstock: ft (KB)  
 Time Tool Opened: 15:04:42  
 Time Test Ended: 20:26:57  
 Interval: **93710.0 ft (KB) To 3881.00 ft (KB) (TVD)**  
 Total Depth: 3881.00 ft (KB) (TVD)  
 Hole Diameter: 7.88 inches Hole Condition: Fair  
 Test Type: Conventional Bottom Hole (Initial)  
 Tester: Gary Pevoteaux  
 Unit No: 80  
 Reference Elevations: 2053.00 ft (KB)  
 2044.00 ft (CF)  
 KB to GR/CF: 9.00 ft

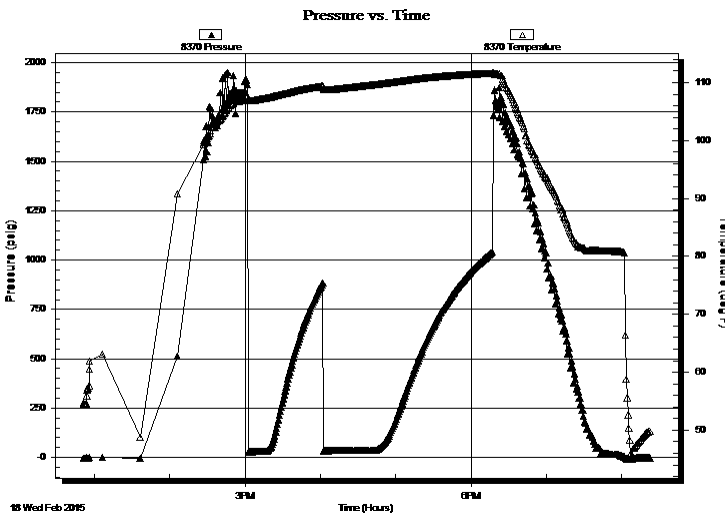
## Serial #: 8370

Inside

Press @RunDepth: psig @ 3711.00 ft (KB) Capacity: 8000.00 psig  
 Start Date: 2015.02.18 End Date: 2015.02.18 Last Calib.: 2015.02.18  
 Start Time: 12:51:29 End Time: 20:22:38 Time On Btm:  
 Time Off Btm:

TEST COMMENT: IF:vWeak blow . 1 1/2" decreasing.  
 IS:No blow .  
 FF:Weak surge/ No blow .  
 FS:No blow .

## PRESSURE SUMMARY



Time (Min.)	Pressure (psig)	Temp (deg F)	Annotation

## Recovery

Length (ft)	Description	Volume (bbl)
35.00	Drig.mud	0.17

## Gas Rates

Choke (inches)	Pressure (psig)	Gas Rate (Mcf/d)



**TRILOBITE  
TESTING, INC.**

# DRILL STEM TEST REPORT

**FLUID SUMMARY**

Herman L. Loeb LLC  
 P.O>Box 838  
 Law renceville Il.62439  
 ATTN: Keith Revis

**27-26s-15w Pratt Ks.**  
**Kodiak A#1-27**  
 Job Ticket: 59742      **DST#: 1**  
 Test Start: 2015.02.18 @ 12:57:42

## Mud and Cushion Information

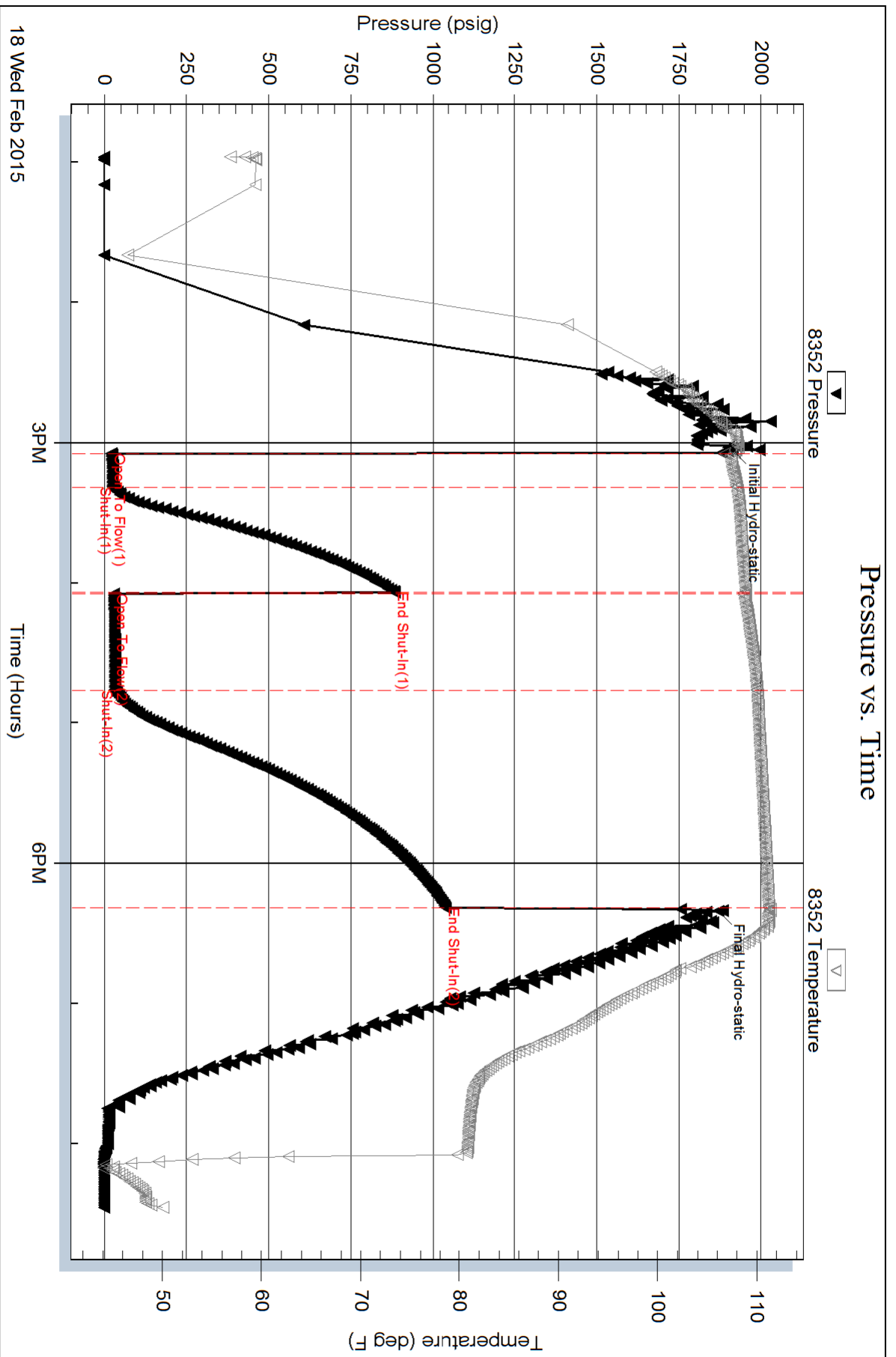
Mud Type: Gel Chem	Cushion Type:	Oil API:	deg API
Mud Weight: 9.00 lb/gal	Cushion Length: ft	Water Salinity:	5000 ppm
Viscosity: 53.00 sec/qt	Cushion Volume: bbl		
Water Loss: 8.99 in <sup>3</sup>	Gas Cushion Type:		
Resistivity: 0.00 ohm.m	Gas Cushion Pressure: psig		
Salinity: 5000.00 ppm			
Filter Cake: 0.20 inches			

## Recovery Information

Recovery Table

Length ft	Description	Volume bbl
35.00	Drig.mud	0.172

Total Length: 35.00 ft      Total Volume: 0.172 bbl  
 Num Fluid Samples: 0      Num Gas Bombs: 0      Serial #: none  
 Laboratory Name:      Laboratory Location:  
 Recovery Comments:



Serial #: 8370

Inside

Herrnan L. Loeb LLC

Kodiak A#1-27

DST Test Number: 1

