



**TRILOBITE
TESTING, INC.**

DRILL STEM TEST REPORT

Herman L. Loeb, LLC.
P.O. Box 838
Lawrenceville, IL. 62439
ATTN: Tom Pronold

15-33s-26w Meade, KS.
Nika # 1-15
Job Ticket: 57804 **DST#: 1**
Test Start: 2015.01.25 @ 02:59:27

GENERAL INFORMATION:

Formation: **Miss. Chester 'B'**
Deviated: No Whipstock: 0.00 ft (KB)
Time Tool Opened: 05:55:12
Time Test Ended: 12:05:57
Interval: **5508.00 ft (KB) To 5540.00 ft (KB) (TVD)**
Total Depth: 5540.00 ft (KB) (TVD)
Hole Diameter: 7.88 inches Hole Condition: Fair
Test Type: Conventional Bottom Hole (Initial)
Tester: Matt Smith
Unit No: 53
Reference Elevations: 2175.00 ft (KB)
2162.00 ft (CF)
KB to GR/CF: 13.00 ft

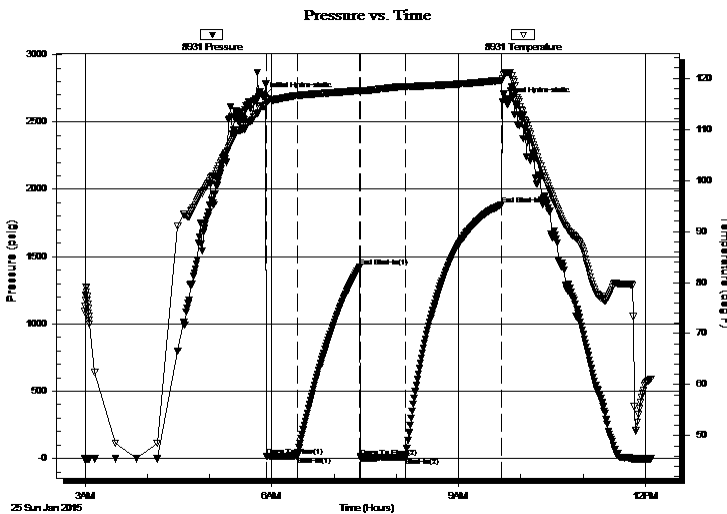
Serial #: 8931

Inside

Press @ Run Depth: 8.43 psig @ 5509.00 ft (KB) Capacity: 8000.00 psig
Start Date: 2015.01.25 End Date: 2015.01.25 Last Calib.: 2015.01.25
Start Time: 02:59:32 End Time: 12:05:57 Time On Btm: 2015.01.25 @ 05:52:12
Time Off Btm: 2015.01.25 @ 09:42:12

TEST COMMENT: IF: Strong blow . B.O.B. in 25 secs.
IS: No blow . Bleed off in 3 1/2 mins.
FF: Strong blow . B.O.B. immediately.
FS: No blow . Bleed off in 5 mins.

PRESSURE SUMMARY



Time (Min.)	Pressure (psig)	Temp (deg F)	Annotation
0	2687.72	114.56	Initial Hydro-static
3	14.98	115.47	Open To Flow (1)
33	19.66	116.59	Shut-In(1)
93	1424.95	117.59	End Shut-In(1)
94	6.70	117.48	Open To Flow (2)
137	8.43	118.32	Shut-In(2)
230	1887.55	119.59	End Shut-In(2)
230	2653.40	119.86	Final Hydro-static

Recovery

Length (ft)	Description	Volume (bbl)
2.00	DM 100%m	0.01
0.00	1077' G.I.P. 100%g	0.00

Gas Rates

Choke (inches)	Pressure (psig)	Gas Rate (Mcf/d)

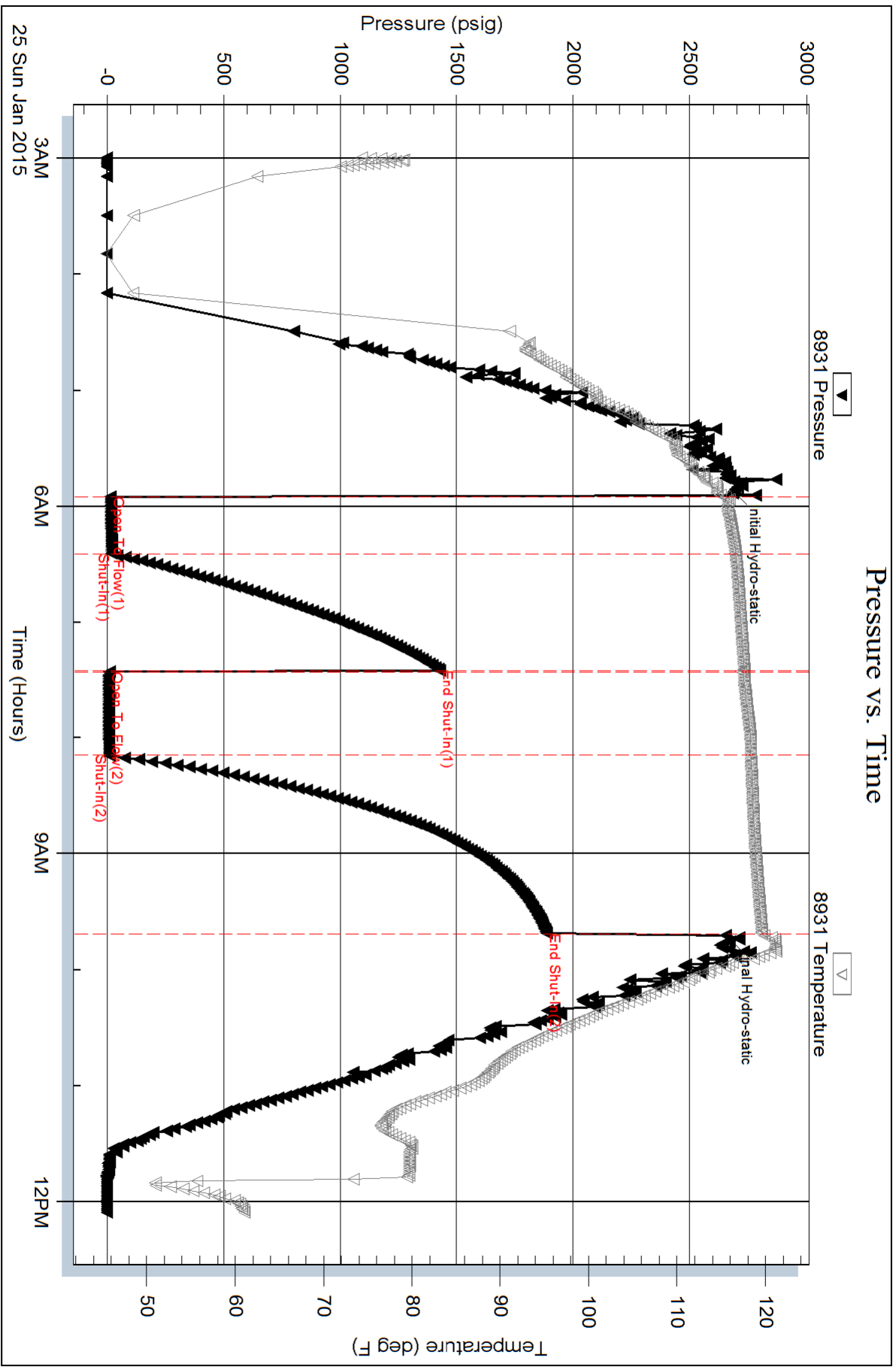
Serial #: 8931

Inside

Herrman L. Loeb, LLC.

Nika # 1-15

DST Test Number: 1



Triobite Testing, Inc

Ref. No: 57804

Printed: 2015.01.25 @ 13:47:15

