



TRILOBITE TESTING, INC.

DRILL STEM TEST REPORT

Herman L. Loeb, LLC.
 P.O. Box 838
 Lawrenceville, IL. 62439
 ATTN: Tom Pronold

15-33s-26w Meade, KS.
Nika # 1-15
 Job Ticket: 57805 **DST#: 2**
 Test Start: 2015.01.25 @ 21:41:29

GENERAL INFORMATION:

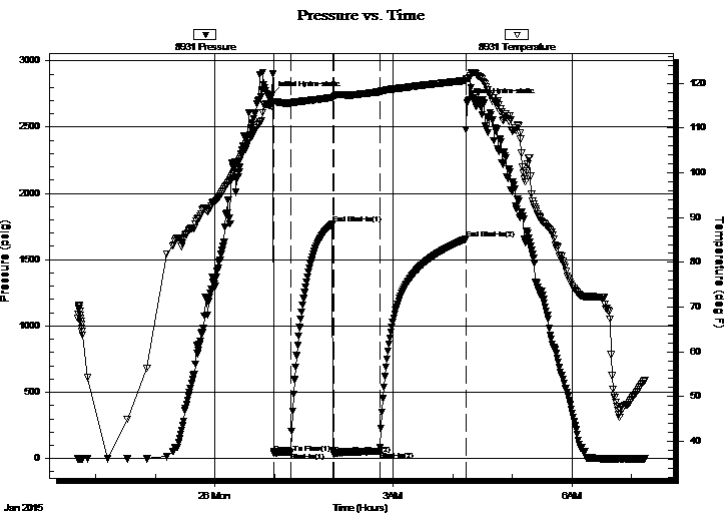
Formation: **Miss. Chester 'C'**
 Deviated: No Whipstock: 0.00 ft (KB)
 Time Tool Opened: 00:59:44
 Time Test Ended: 07:13:29
 Interval: **5563.00 ft (KB) To 5612.00 ft (KB) (TVD)**
 Total Depth: 5612.00 ft (KB) (TVD)
 Hole Diameter: 7.88 inches Hole Condition: Fair
 Test Type: Conventional Bottom Hole (Reset)
 Tester: Matt Smith
 Unit No: 53
 Reference Elevations: 2175.00 ft (KB)
 2162.00 ft (CF)
 KB to GR/CF: 13.00 ft

Serial #: 8931

Inside

Press@RunDepth: 57.01 psig @ 5564.00 ft (KB) Capacity: 8000.00 psig
 Start Date: 2015.01.25 End Date: 2015.01.26 Last Calib.: 2015.01.26
 Start Time: 21:41:34 End Time: 07:13:29 Time On Btm: 2015.01.26 @ 00:57:14
 Time Off Btm: 2015.01.26 @ 04:14:14

TEST COMMENT: IF: Strong blow . B.O.B. in 20 secs.
 IS: No blow . Bleed off in 10 mins.
 FF: Strong blow . B.O.B., immediate. G.T.S. Gauged gas in 30 mins., See gas report.
 FS: No blow . Bleed off in 15 mins.



PRESSURE SUMMARY

Time (Min.)	Pressure (psig)	Temp (deg F)	Annotation
0	2741.33	114.88	Initial Hydro-static
3	39.40	115.93	Open To Flow (1)
19	47.19	115.48	Shut-In(1)
62	1768.53	116.85	End Shut-In(1)
63	32.35	117.09	Open To Flow (2)
109	57.01	118.10	Shut-In(2)
196	1656.51	120.63	End Shut-In(2)
197	2683.69	121.06	Final Hydro-static

Recovery

Length (ft)	Description	Volume (bbl)
62.00	GWCM 3%g 7%w 90% m	0.30
0.00	G.T.S G.I.P. 100%g	0.00
0.00	RW .58 @ 45 degrees = 18000 chlorides	0.00

* Recovery from multiple tests

Gas Rates

	Choke (inches)	Pressure (psig)	Gas Rate (Mcf/d)
First Gas Rate	0.13	11.00	9.51
Last Gas Rate	0.13	13.00	10.26
Max. Gas Rate	0.13	13.00	10.26



**TRILOBITE
TESTING, INC**

DRILL STEM TEST REPORT

FLUID SUMMARY

Herman L. Loeb, LLC.
P.O. Box 838
Lawrenceville, IL. 62439
ATTN: Tom Pronold

15-33s-26w Meade, KS.
Nika # 1-15
Job Ticket: 57805 **DST#: 2**
Test Start: 2015.01.25 @ 21:41:29

Mud and Cushion Information

Mud Type: Gel Chem	Cushion Type:	Oil API:	deg API
Mud Weight: 9.00 lb/gal	Cushion Length: ft	Water Salinity:	18000 ppm
Viscosity: 53.00 sec/qt	Cushion Volume: bbl		
Water Loss: 8.79 in ³	Gas Cushion Type:		
Resistivity: 0.58 ohm.m	Gas Cushion Pressure: psig		
Salinity: 4700.00 ppm			
Filter Cake: 0.20 inches			

Recovery Information

Recovery Table

Length ft	Description	Volume bbl
62.00	GWCM 3%g 7%w 90%m	0.305
0.00	G.T.S G.I.P. 100%g	0.000
0.00	RW .58 @ 45 degrees = 18000 chlorides	0.000

Total Length: 62.00 ft Total Volume: 0.305 bbl

Num Fluid Samples: 1 Num Gas Bombs: 1 Serial #: MAS Pratt

Laboratory Name: Caraway Laboratory Location: Liberal, KS

Recovery Comments: Gauged gas see gas report. RW is .58 @ 45 degrees = 18,000 chlorides.



**TRILOBITE
TESTING, INC.**

DRILL STEM TEST REPORT

GAS RATES

Herman L. Loeb, LLC.

15-33s-26w Meade, KS.

P.O. Box 838
Lawrenceville, IL. 62439

Nika # 1-15

Job Ticket: 57805

DST#: 2

ATTN: Tom Pronold

Test Start: 2015.01.25 @ 21:41:29

Gas Rates Information

Temperature: 59 (deg F)
Relative Density: 0.65
Z Factor: 0.8

Gas Rates Table

Flow Period	Elapsed Time	Choke (inches)	Pressure (psig)	Gas Rate (Mcf/d)
2	35	0.13	11.00	9.51
2	40	0.13	13.00	10.26
2	45	0.13	13.00	10.26

