

Fall & Associates

Stake and Elevation Service

719 W. 5th Street

P.O. Box 404

Concordia, KS. 66901

1-800-536-2621

Date 7-8-14

Invoice Number 0706141

MURFIN DRILLING

Operator

2-10

Number

Culwell 'C'

Farm Name

Alt.: 1980'FSL 2080'FWL

Cheyenne-KS

County-State

10

S

1s

T

37w

R

1980'FSL 1980'FWL

Location

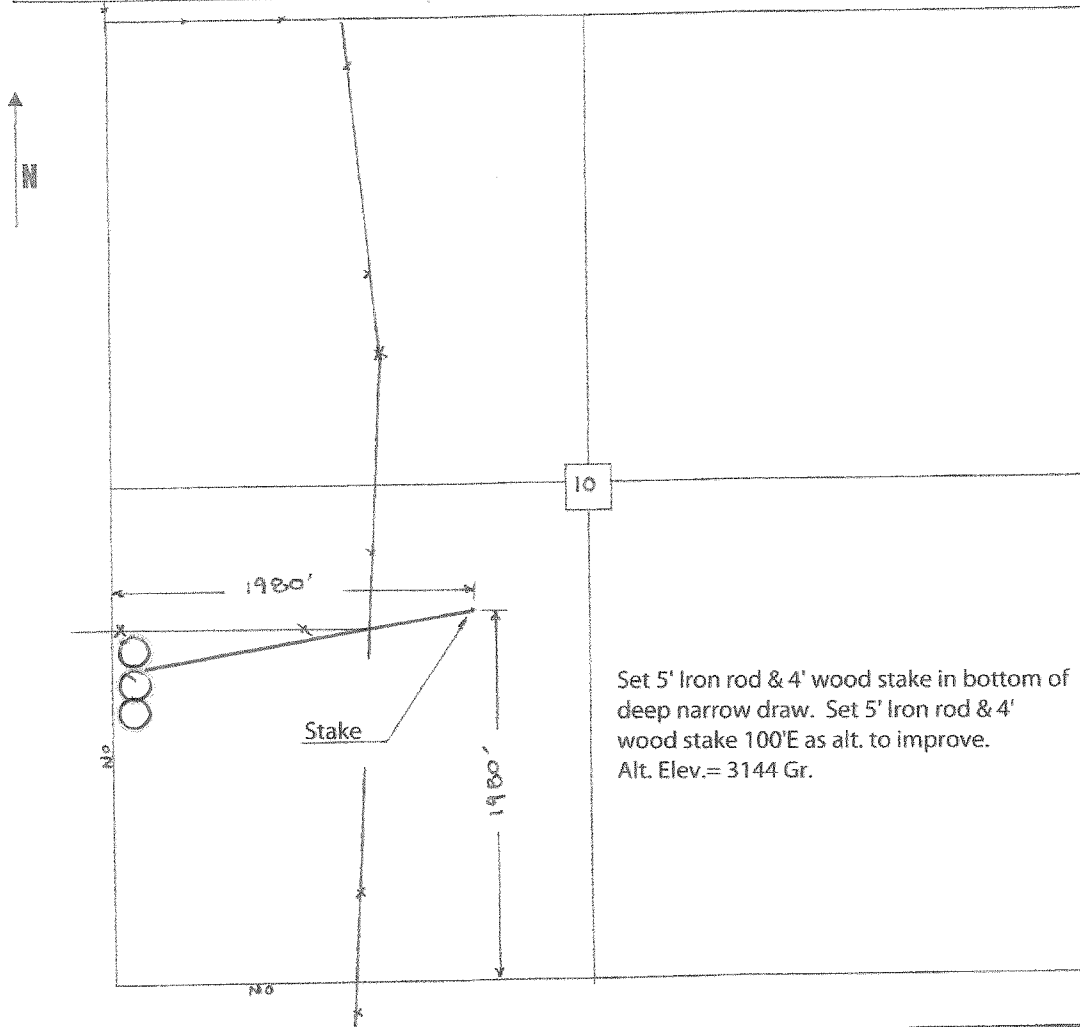
Elevation 3144 Gr.

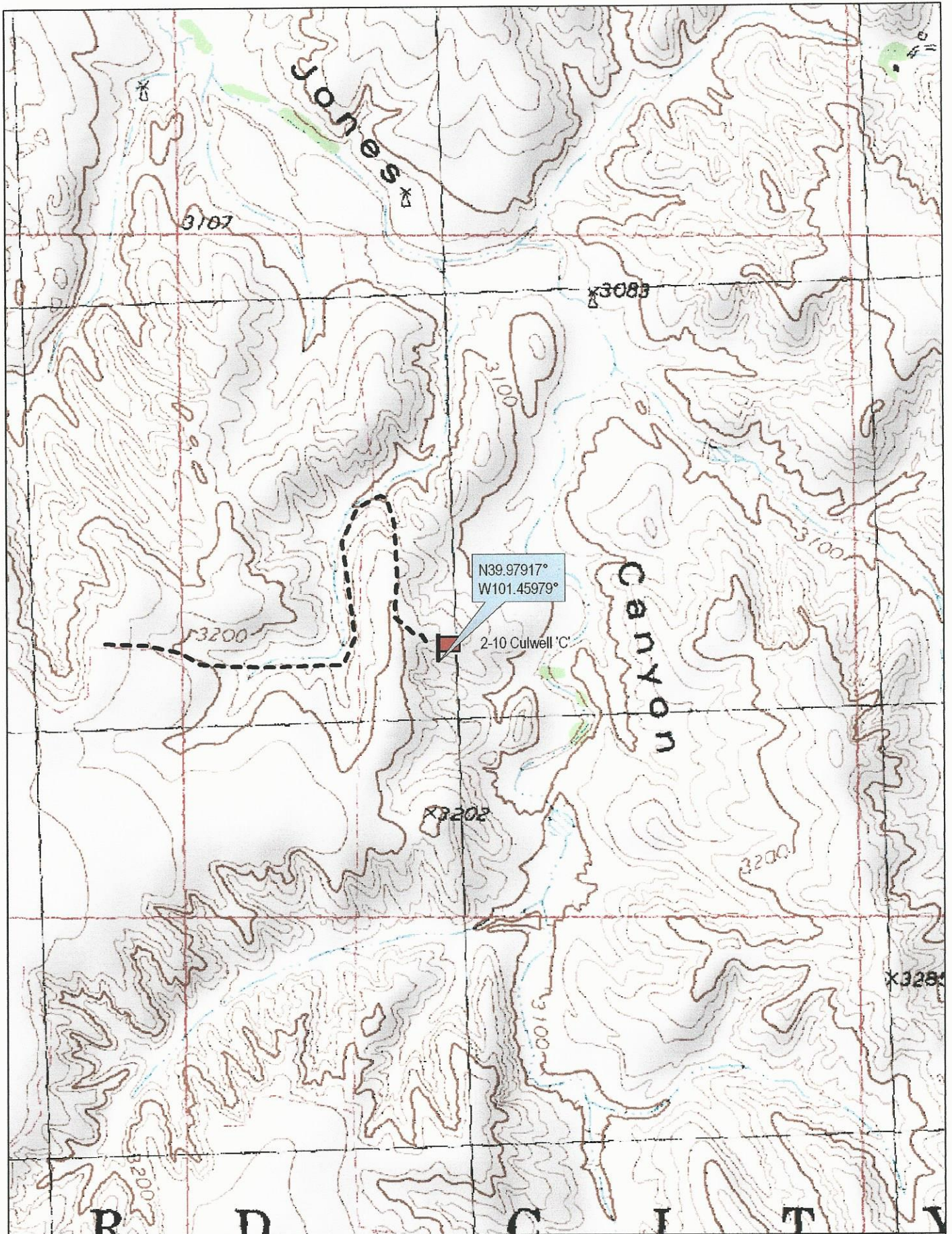
Elevation 3129 Gr.

Ordered By: Shauna

Murfin Drilling
250 N. Water
Suite 300
Wichita, Ks. 67202

Scale 1"=1000'





N39.97917°
W101.45979°

2-10 Culwell 'C'



© 2002 DeLorme. 3-D TopoQuads®. Data copyright of content owner.
www.delorme.com

