

# HALLIBURTON

iCem® Service

**TAP OIL LIMITED - EBUS**

**For: WILLIAM HOWARD**

Date: Sunday, December 28, 2014

**31-1H**

Case 1

Sincerely, JERALD WATSON

## Legal Notice

---

### Warning Disclaimer

Although the information contained in this report is based on sound engineering practices, the copyright owner(s) does (do) not accept any responsibility whatsoever, in negligence or otherwise, for any loss or damage arising from the possession or use of the report whether in terms of correctness or otherwise. The application, therefore, by the user of this report or any part thereof, is solely at the user's own risk.

### Limitations of Liability

Except as expressly set forth herein, there are no representations or warranties by Halliburton, express or implied, including implied warranties of merchantability and/or fitness for a particular purpose. In no event will Halliburton or its suppliers be liable for consequential, incidental, special, punitive or exemplary damages (including, without limitation, loss of data, profits, use of hardware, or software). Customer accepts full responsibility for any investment made based on results from the Software. Any interpretations, analyses or modeling of any data, including, but not limited to Customer data, and any recommendation or decisions based upon such interpretations, analyses or modeling are opinions based upon inferences from measurements and empirical relationships and assumptions, which inferences and assumptions are not infallible, and with respect to which professional may differ. Accordingly, Halliburton cannot and does not warrant the accuracy, correctness or completeness of any such interpretation, recommendation, modeling or other products of the Software Product. As such, any interpretation, recommendation or modeling resulting from the Software for the purpose of any drilling, well treatment, production or financial decision will be at the sole risk of Customer. Under no circumstances will Halliburton or its suppliers be liable for any damages.

## Table of Contents

---

To Generate a Table of Contents, right click here. Click "Update Field." If prompted, select "Entire Table."

---

## 1.0 Real-Time Job Summary

---

### 1.1 Stage Summary - Liquid Volume, Density, & Design Shutdown

---

### 1.2 Stage Summary - Pump Pressure & ECD

---

### 1.3 Stage Summary - Pump Rate & Nitrogen Rate

---

### 1.4 Shutdown Summary

---

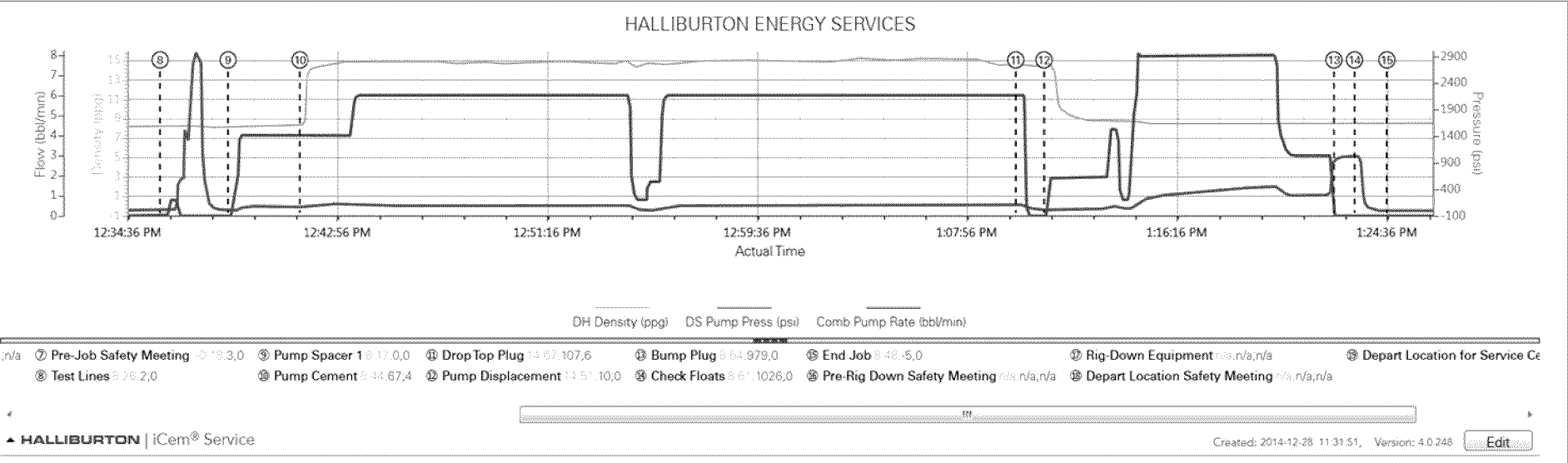
## 1.5 Job Event Log

Type	Seq. No.	Activity	Graph Label	Date	Time	Source	DH Density (ppg)	DS Pump Press (psi)	Comb Pump Rate (bbl/min)	Comments
Event	1	Call Out	Call Out	12/28/2014	02:00:00	USER				
Event	2	Depart Yard Safety Meeting	Depart Yard Safety Meeting	12/28/2014	04:45:00	USER				
Event	3	Depart Shop for Location	Depart Shop for Location	12/28/2014	05:00:00	USER				
Event	4	Arrive at Location from Service Center	Arrive at Location from Service Center	12/28/2014	09:00:00	USER				REQUESTED ON LOCATION AT 0900. ARRIVED AT 0900.
Event	5	Assessment Of Location Safety Meeting	Assessment Of Location Safety Meeting	12/28/2014	09:15:00	USER				SPOKE WITH COMPANY MAN ABOUT JOB NUMBERS AND PROCEDURES. RIG STILL RUNNING CASING UPON ARRIVAL. NO ISSUES TO REPORT. HAD PRE RIG-UP SAFETY MEETING WITH THE CREW ALSO.
Event	6	Rig-Up Equipment	Rig-Up Equipment	12/28/2014	10:00:00	USER				WATER TESTS ALL GOOD
Event	7	Pre-Job Safety Meeting	Pre-Job Safety Meeting	12/28/2014	12:15:00	USER	-0.18	3.00	0.00	DISCUSSED HAZARDS ASSOCIATED WITH THE JOB AND JOB PROCEDURES.
Event	8	Test Lines	Test Lines	12/28/2014	12:35:58	COM7	8.26	2.00	0.00	TESTED LINES TO 3000 PSI.
Event	9	Pump Spacer 1	Pump Spacer 1	12/28/2014	12:38:40	COM7	8.17	0.00	0.00	PUMPED 10 BBLS OF WATER AT 4 BPM, 70 PSI
Event	10	Pump Cement	Pump Cement	12/28/2014	12:41:31	COM7	8.44	67.00	4.00	PUMPED 115 BBLS OF CEMENT AT 15.0 PPG, 6 BPM, 105 PSI
Event	11	Drop Top Plug	Drop Top Plug	12/28/2014	13:09:57	USER	14.67	107.00	6.00	DROPPED HALLIBURTON TOP PLUG
Event	12	Pump Displacement	Pump Displacement	12/28/2014	13:11:05	COM7	14.51	10.00	0.00	PUMPED 60 BBLS OF WATER DISPLACEMENT AT 8 BPM, 250 PSI.

Type	Seq. No.	Activity	Graph Label	Date	Time	Source	DH Density (ppg)	DS Pump Press (psi)	Comb Pump Rate (bbl/min)	Comments
										DURING DISPLACEMENT SEEN CEMENT BACK AT 20 BBLS GONE, 40 BBLS OF CEMENT BACK TO SURFACE.
Event	13	Bump Plug	Bump Plug	12/28/2014	13:22:35	COM7	8.54	979.00	0.00	BUMPED PLUG AT 300 PSI AND TOOK 700 OVER
Event	14	Check Floats	Check Floats	12/28/2014	13:23:24	USER	8.61	1026.00	0.00	FLOATS HOLDING, .5 BBL BACK
Event	15	End Job	End Job	12/28/2014	13:24:41	COM7	8.48	-5.00	0.00	
Event	16	Pre-Rig Down Safety Meeting	Pre-Rig Down Safety Meeting	12/28/2014	13:30:00	USER				
Event	17	Rig-Down Equipment	Rig-Down Equipment	12/28/2014	13:45:00	USER				
Event	18	Depart Location Safety Meeting	Depart Location Safety Meeting	12/28/2014	14:45:00	USER				
Event	19	Depart Location for Service Center or Other Site	Depart Location for Service Center or Other Site	12/28/2014	15:00:00	USER				

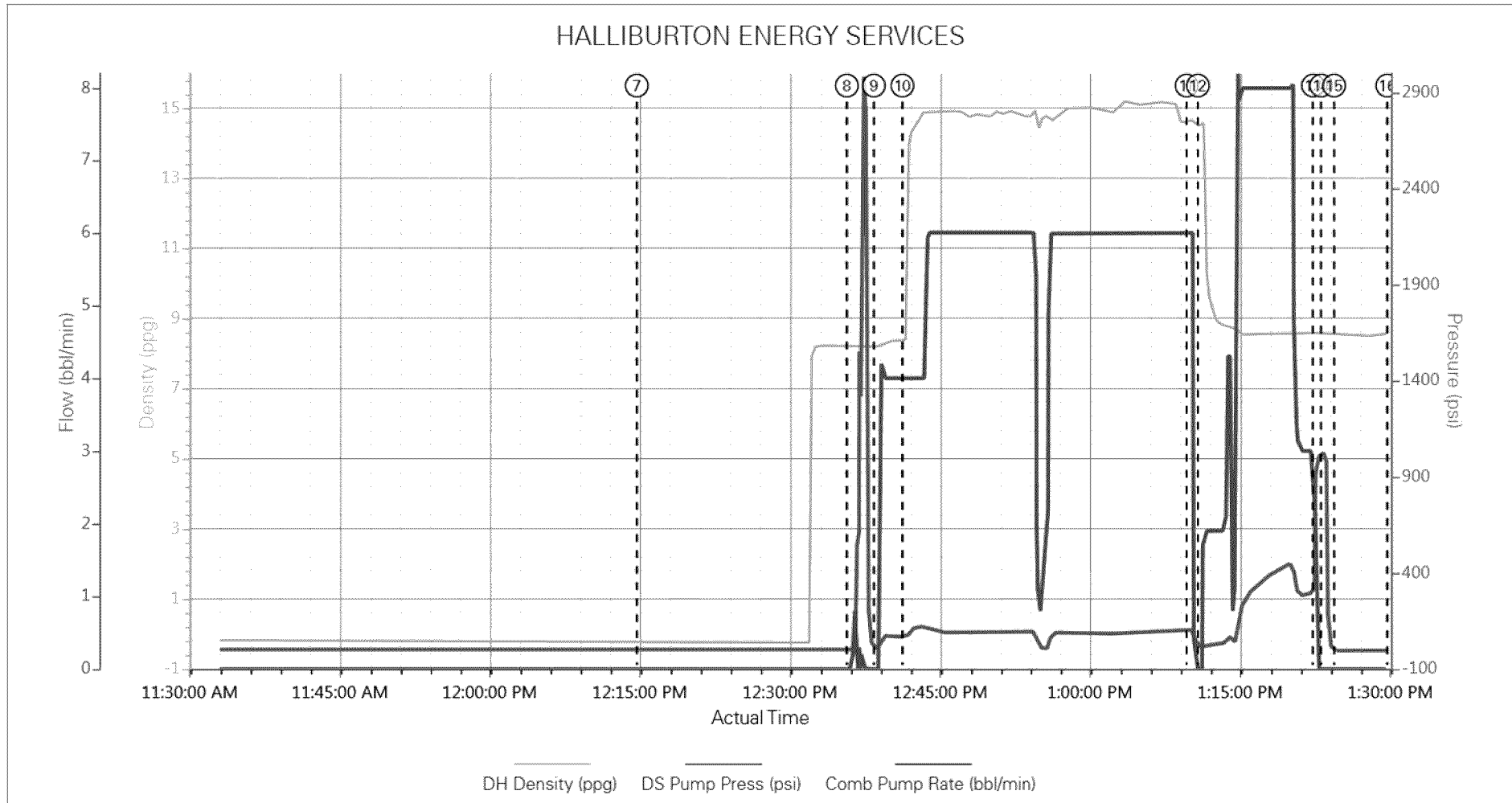
2.0 Attachments

2.1 CHART.png



## 3.0 Custom Graphs

### 3.1 Custom Graph





4.0 Appendix

---

4.1 One-Minutes Real-Time Data Listing

---