



**TRILOBITE
TESTING, INC**

DRILL STEM TEST REPORT

Vicent Oil Corporation
155 N Market Suite 700
Wichita, Ks. 67202
ATTN: Jim Hall

8-29s-22w Ford Co., Ks.

Feikert Farms 4-8

Job Ticket: 57793

DST#: 1

Test Start: 2014.11.07 @ 00:36:24

GENERAL INFORMATION:

Formation: **Chert**

Deviated: No Whipstock: 0.00 ft (KB)

Time Tool Opened: 04:23:39

Time Test Ended: 10:38:09

Test Type: Conventional Bottom Hole (Initial)

Tester: Matt Smith

Unit No: 53

Interval: 5228.00 ft (KB) To 5254.00 ft (KB) (TVD)

Total Depth: 5254.00 ft (KB) (TVD)

Hole Diameter: 7.88 inches Hole Condition: Fair

Reference Elevations: 2510.00 ft (KB)

2500.00 ft (CF)

KB to GR/CF: 10.00 ft

Serial #: 8931

Inside

Press@RunDepth: 21.87 psig @ 5229.00 ft (KB)

Start Date: 2014.11.07

End Date:

2014.11.07

Start Time: 00:36:29

End Time:

10:38:09

Capacity: 8000.00 psig

Last Calib.: 2014.11.07

Time On Btm: 2014.11.07 @ 04:20:24

Time Off Btm: 2014.11.07 @ 08:10:24

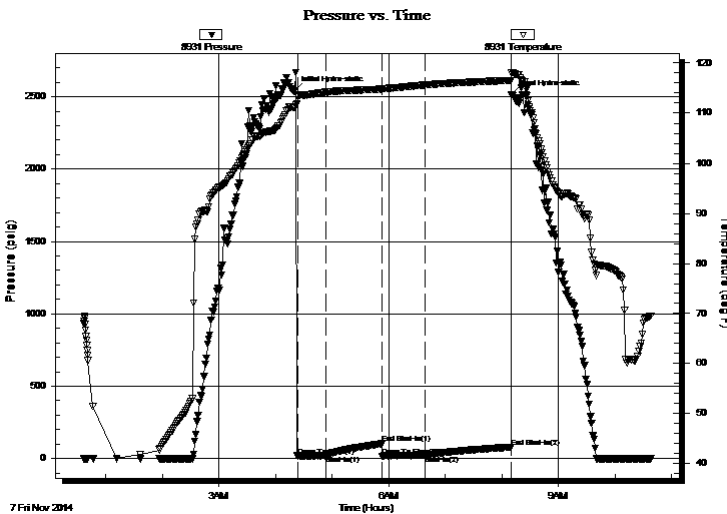
TEST COMMENT: IF: Strong blow . B.O.B. in 3 mins. Dying back to Fair - Strong.

IS: No blow . 3 mins to bleed off.

FF: Fair blow . Surf., - 6".

FS: No blow . 1 1/2 mins. to bleed off.

PRESSURE SUMMARY



Time (Min.)	Pressure (psig)	Temp (deg F)	Annotation
0	2544.67	111.11	Initial Hydro-static
4	15.24	113.17	Open To Flow (1)
33	19.43	114.18	Shut-In(1)
92	102.09	114.80	End Shut-In(1)
93	17.51	114.85	Open To Flow (2)
139	21.87	115.63	Shut-In(2)
230	79.39	116.57	End Shut-In(2)
230	2513.31	118.02	Final Hydro-static

Recovery

Length (ft)	Description	Volume (bbl)
20.00	GOCM 1%g 1%o 98%m	0.28
0.00	434' G.I.P. 100%g	0.00

Gas Rates

	Choke (inches)	Pressure (psig)	Gas Rate (Mcf/d)



**TRILOBITE
TESTING, INC**

DRILL STEM TEST REPORT

FLUID SUMMARY

Vicent Oil Corporation

8-29s-22w Ford Co., Ks.

155 N Market Suite 700
Wichita, Ks. 67202

Feikert Farms 4-8

Job Ticket: 57793

DST#: 1

ATTN: Jim Hall

Test Start: 2014.11.07 @ 00:36:24

Mud and Cushion Information

Mud Type: Gel Chem

Cushion Type:

Oil API:

deg API

Mud Weight: 9.00 lb/gal

Cushion Length:

ft

Water Salinity:

8000 ppm

Viscosity: 51.00 sec/qt

Cushion Volume:

bbf

Water Loss: 10.59 in³

Gas Cushion Type:

Resistivity: ohm.m

Gas Cushion Pressure:

psig

Salinity: 8000.00 ppm

Filter Cake: 0.20 inches

Recovery Information

Recovery Table

Length ft	Description	Volume bbf
20.00	GOCM 1%g 1%o 98%m	0.281
0.00	434' G.I.P. 100%g	0.000

Total Length: 20.00 ft Total Volume: 0.281 bbf

Num Fluid Samples: 0

Num Gas Bombs: 0

Serial #: none

Laboratory Name:

Laboratory Location:

Recovery Comments:

