

# LITHOLOGY STRIP LOG

## WellSight Systems

Scale 1:240 (5"=100') Imperial  
Measured Depth Log

Well Name: VINCENT OIL CORP. FEIKERT FARMS #4-8  
API: 15-057-20951-00-00  
Location: SW NE SE NE SEC. 8, T 29S, R 22W, FORD CO. KANSAS  
License Number: Vincent Oil 5004  
Spud Date: 10/29/2014  
Surface Coordinates: 1,710' FNL, 340' FEL  
Region: Kingsdown NW  
Drilling Completed: 11/09/2014

### Bottom Hole

Coordinates:  
Ground Elevation (ft): 2,500'      K.B. Elevation (ft): 2,510'  
Logged Interval (ft): 4,250'      To: 5,400'      Total Depth (ft): 5,400'  
Formation: Mississippi  
Type of Drilling Fluid: NATIVE MUD TO 3,760'. CHEMICAL GEL TO RTD

Printed by MUD.LOG from WellSight Systems 1-800-447-1534 [www.WellSight.com](http://www.WellSight.com)

### OPERATOR

Company: VINCENT OIL CORP.  
Address: 155 N. MARKET STE 700  
WICHITA, KANSAS 67202-1821  
OFFICE; 316-262-3573

### GEOLOGIST

Name: Jame R. Hall (Well Site Supervision)  
Company: Black Gold Petroleum  
Address: 5530 N. Sedgwick  
Wichita, Kansas 67204-1828  
316-838-2574, cell: 316-217-1223

## Comments

Drilling contractor: Val Energy Rig #2, Tool Pusher; Rick Smith

Conductor Pipe: 13 3/8" set at 253' w/235sx, cement did not circulate.

Surface Casing: 8 5/8" set at 694' w/300sx, cement, did circulate.

Daily Activity: @07:00hrs.

10/29/14; Move on and spud with 17 1/4" bit. Lost 100bbl @ 200', drilled to 257' and ran 13 3/8" conductor to 253'. Cmt. with 200sx, did not circulate, cmt with extra 35sx on the back side.

10/30/14; 257' WOC. Then drilled to 700' and set 8 5/8" csg. @ 694', Cmt with 300sx, did circulate.

10/31/14; 700' WOC.

11/01/14; 1,880' Drilling.

11/02/14; 2,990' Drilling.

11/03/14; 3,625' Drilling.

11/04/14; 4,299' Drilling. Mud up with chemical gel system @ 3,760'.

11/05/14; 4,790' Drilling. @ 4,766 start premix to bring mud to 50-55 Vis and 2-3# LCM.

11/06/14; 5,112' Finishing short trip after circulating the Pawnee. Ready to drill ahead.

11/07/14; 5,254' DST #1 Chert; 5,228' - 5,254' (26"), Circulated Pawnee and short trip. Circulated Base Penn and drilled ahead. Pipe strap 3.96' long to the board.

11/08/14; 5,277' DST #2 Miss. 5,226' - 5,277' (51"). Circulated Miss @ 5,277' and test.

11/09/14; 5,320' Drilling. Finished DST #3 Miss. 5,260' - 5,316'. Drilled to RTD (5,400'), ran open hole logs.

11/10/14; 5,400', 4 1/2" production casing was run.

Deviation Surveys: 0.25 deg. @ 257', 1.0 deg. @ 700', 1 deg. @ 5,254, 0.75 deg. @ 5,400'.

### Bit Record:

#1 17 1/4" out @ 257'.

#2 12 1/4" in @ 257', out @ 700', made 443'.

#3 7 7/8" JZ HA20Q in @ 700', out @ 5,254' made 4,554'

#4 7 7/8" RR JZ HA20Q in @ 5,254', out @ 5,400', made 146'.

Drilling time commenced: @ 4,200'. Maximum 10' wet and dry samples commenced: @ 4,250' to RTD. Samples delivered to Kansas Geological Sample Library at Wichita, Kansas.

Gas Detector: Blue Stem unit #0279. Digital Unit, (commenced @ 4,200').

Mud System: Mud-Co/Service Mud. Chemical Gel system @ 3,760', Mud Engineer: Justen Whitin (Dodge City Office).

Open Hole Logs: , Hays Kansas,

Logging Engineer: Ian Mabb.

DIL, CDL/CNL/PE, MEL (RTD - 4,200'), SONIC (RTD - 8 5/8" csg).

Sample tops are placed on this Plotted Geo. Report, with the reference wells "A" Vincent Oil Overmyer #1-9 1,590' FNL & 915' FWL 9-T29S-R22W, and "B" Vincent Oil Feikert Farms #2-8 739' FNL & 1,928' FEL, 8-T29S-R22W. E-log tops datum differences shown.

E-log depths are 3'-4' shallow to the drilling time depths shown on this Geologic Strip Log. Therefore DST's and Tops will need to be shifted 3'-4' on the Open Hole Logs to correlate with this Geologic Strip Log.

## DSTs

**DST #1** Chert 5,228' - 5252' (26') 30-60-45-90, IH 2545, IF 15-19 (BOB 3min), ISI 102 (no blow), FF 18-22 (surface building to 6 inch), FSI 79 (no blow), FH 2513, Rec; 434' GIP, 20' GOCM (1%gas, 1%oil, 98%mud), BHT 117F.

**DST #2** Miss. 5,226' - 5277' (51') 30-60-60-120, IH 2540, IF 45-87 (BOB 90sec.), ISI 1073 (no blow), FF 102-172 (BOB immd.) GTS 34min (40min 7.6mcf, 50min 7.8mcf, 60min 7.8mcf blue flame), FSI 1083 (10min to bleed off, 1/4inch blow in 40min), FH 2477, Rec; 4,922' GIP, 45' GOCM (3%gas,1%oil,96%mud), 62' GOCM (15%gas,25%oil,60%mud), 186' WGOCM (20%gas,25%oil,15%water,40%mud), 62' GWOCM (18%gas,25%oil,15%water,42%mud), BHT 119F, water chl 41,000ppm (checked by mud engineer), chl mud 8,000ppm.

**DST #3** Miss. 5,260' - 5,316' (56') 60-90-90-120, IH 2485, IF 46-101 (BOB 50sec.), ISI 1118 (bleed off 10min, 5 1/2' blow), FF 105-186 (BOB Immd. GTS 57min, 60min 6.5mcf, 70min 6.9mcf, 80min 7.1mcf, 90min 7.3mcf) FSI 1121 (bleed off 15min, BOB in 55min), FH 2463, Rec; 4,954' GIP, 52' OGWCM (10%gas,19%oil,1%water,70%mud), 62' WMCOG (36%gas,35%oil,14%water,15%mud),124' MCWOG (39%gas,27%oil,17%water,17%mud), 124' GOMCW (1%gas,1%oil,96%water,2%mud), Rwa 0.16 @ 40F (0.0547 @ 117F), Chl 86,000ppm, Mud 8,500ppm, BHT 117F.


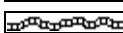
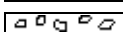
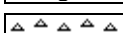
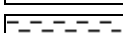
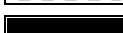
## Qualifiers


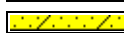



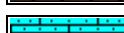
### CARBONATE CLASSIFICATION:


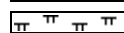

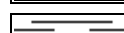


**AFTER DUNHAM:** **GRAIN;** any fossil, fossil fragment, sand grain, or other rock fragment within the rock. **MUDSTONE;** muddy carbonate rocks containing less than 10% grains. **WACKESTONE;** mud supported carbonate rocks with more than 10% grains. **PACKSTONE;** grain supported muddy carbonate rocks. **GRAINSTONE;** mud free carbonate rock, grain supported. **BOUNDSTONE;** carbonate rock bound together at deposition (coral, etc.). **CRYSTALLINE CARBONATE;** carbonate rock retaining to little of their depositional texture to be classified.






Qualifiers; (Fossils, Minerals, Shows, Porosity, etc.) Rare = less than 1% of sample total, Trace = less than 5% of sample total, Greater than 5% an estimate of total percentage.

## ROCK TYPES

	Anhy
	Bent
	Brec
	Cht
	Clyst
	Coal

	Congl
	Sdy dolo
	Shy dolo
	Dol
	Gyp
	Sdy lmst

	Lmst
	Mrlst
	Salt
	Shale
	Slstst
	Ss

	Black sh
	Gry sh
	Shale
	Shyslstst
	Sltysh

## ACCESSORIES

### MINERAL

- Anhy
- Arg
- Bent
- Bit
- Brecfrag
- Calc
- Carb
- Chtdk
- Chtlt
- Dol
- Ferrpel
- Ferr
- Glau
- Gyp
- Marl
- Nodule
- Phos
- Pyr
- Salt
- Sandy
- Silt

- Chlorite
- Dol
- Sand
- Slty

### FOSSIL

- Algae
- Amph
- Belm
- Bioclst
- Brach
- Bryozoa
- Cephal
- Coral
- Crin
- Echin
- Fish
- Foram
- Fossil
- Gastro
- Oolite
- Ostra

- Pelec
- Pelloidal
- Pisolite
- Plant
- Strom
- Fuss
- Oomoldic

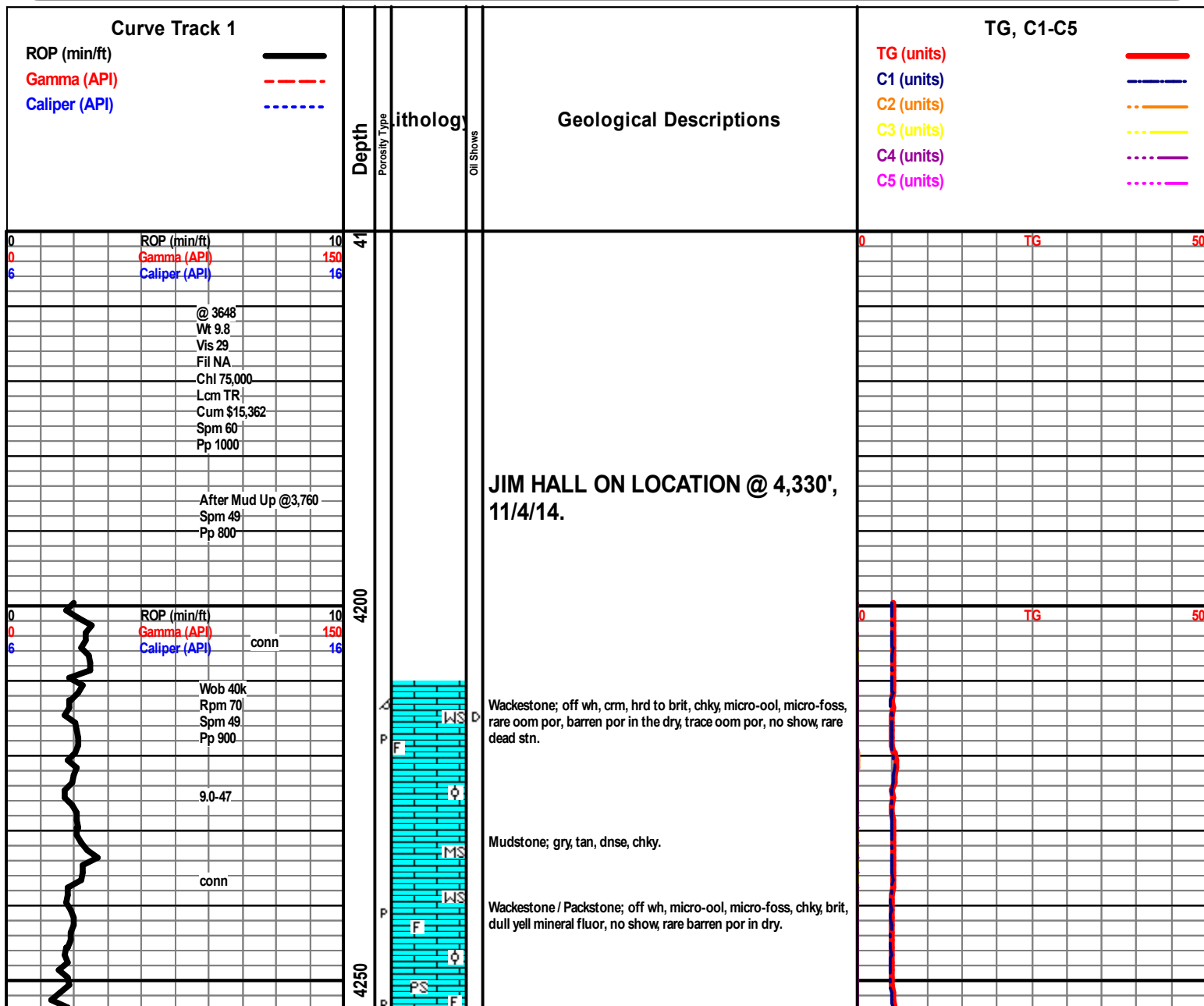
- Grysh
- Gryslt
- Lms
- Sandylms
- Sh
- Sltstn

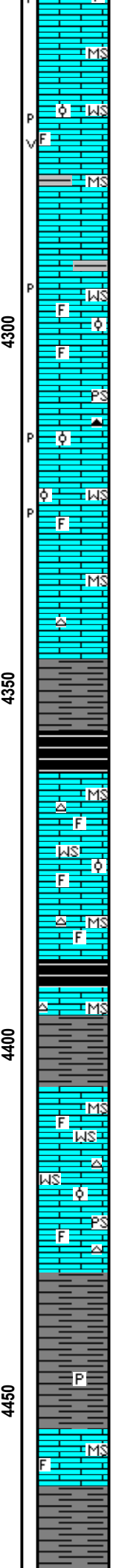
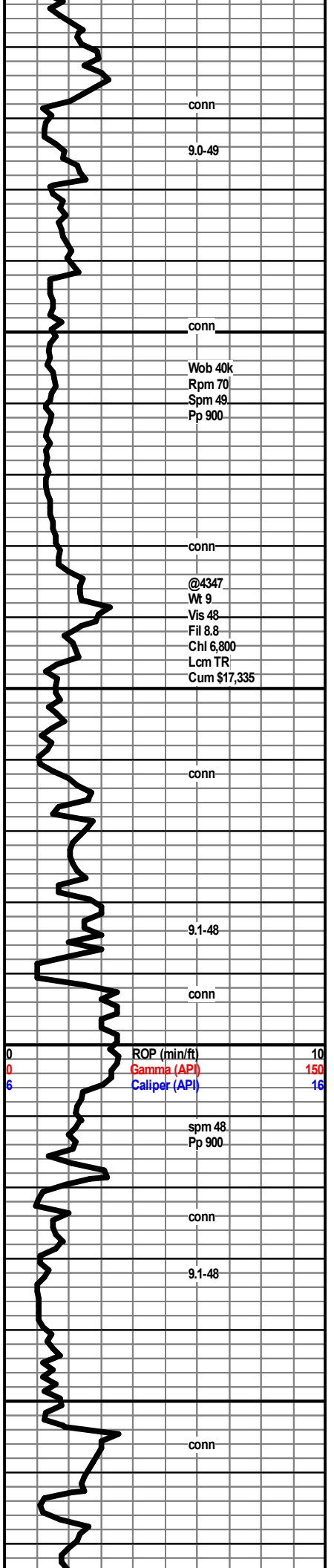
### STRINGER

- Anhy
- Arg
- Bent
- Coal
- Dol
- Gyp
- Ls
- Mrst
- Sltstrg
- Ssstrg
- Carbsh
- Clystn
- Dol

### TEXTURE

- Boundst
- Chalky
- Cryxln
- Earthy
- Finexln
- Grainst
- Lithogr
- Microxln
- Mudst
- Packst
- Wackest





Mudstone; crm, gry, hard, most chky, sm micro-foss, dns look wet, yell min fluor only, no show

Wackestone; crm, off wh, chky, micro-ool, micro-foss, no show in wet, rare barren por in dry.

Mudstone; crm, gry, brit, micro-foss, most chky, slight inc shale here

Wackestone / Packstone; crm, off wh, occ tan, britt to hard, chky, some xln-silky, micro-ool to micro-foss, looks tight in wet, with no show in wet, min flour only, rare dark gray free chert, rare barren por in dry.

Wackestone; off wh, crm, hard, chky, micro-ool to micro-foss, yell min fluor, no show, rare barren por in dry.

Mudstone; crm, hard to britt, chky, to silky-xln, dns, rare free gry chert.

Shale; gry to drk gry, most sft, tab to plty, poor sample rep here.

Shale; up to 40% blk, carb, soft to hard, no vis gas bubbles.

Mudstone / Wackestone; crm, off wh, hard to soft, chky to xln, micro-ool to micro-foss, rare off wh to lt gry free chert here.

Heeb 4387 (-1877) A-7 B -7

Shale; blk, carb, very hard to sft, no visible gas bubbles.

Shale; 10% blk, gry, rare gry-gm, sft to hard, most rthy texture.

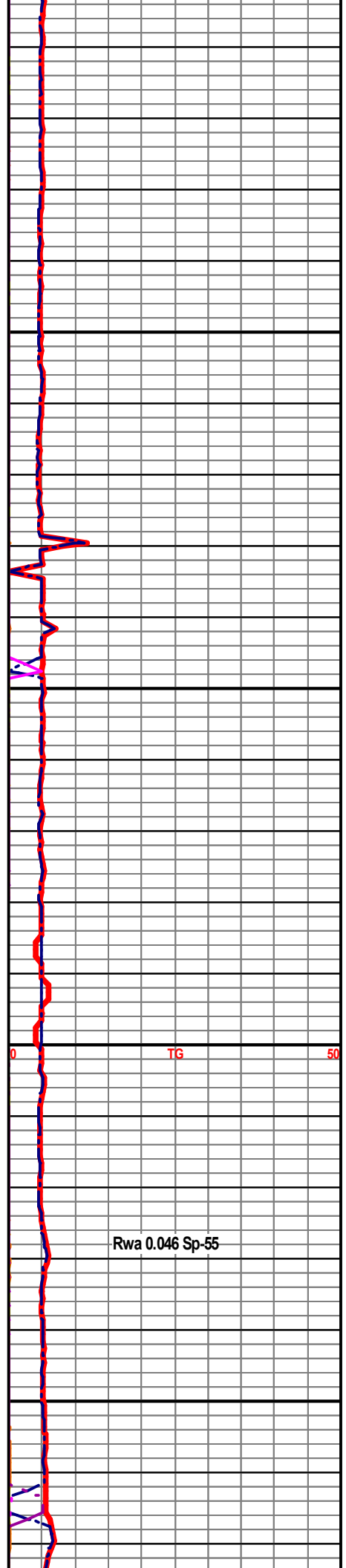
Mudstone / Wackestone; crm, hrd, most chky, micro-foss, rare free wh chert.

Wackestone / Packstone; crm, tan, micro-ool, to micro-foss, rare tan oom-cave?, spty to wormy dark stain, no cut, no vis oil, no odor, no visible show in wet sample

Shale; 10-20% blk, gry, most soft rthy text, some blk shale hrd, rare pyr.

Mudstone; crm, off wh, chky hrd to soft, some silky xln text, micro-foss, min fluor only, no show wet.

Shale; 10-20% blk, gry, aa, most soft-rthy text.



conn

9.0-49

conn

Wob 40k  
Rpm 70  
Spm 49  
Pp 900

conn

@4347  
Wt 9  
Vis 48  
Fil 8.8  
Chl 6,800  
Lcm TR  
Cum \$17,335

conn

9.1-48

conn

ROP (min/ft) 10  
Gamma (API) 150  
Caliper (API) 16

spm 48  
Pp 900

conn

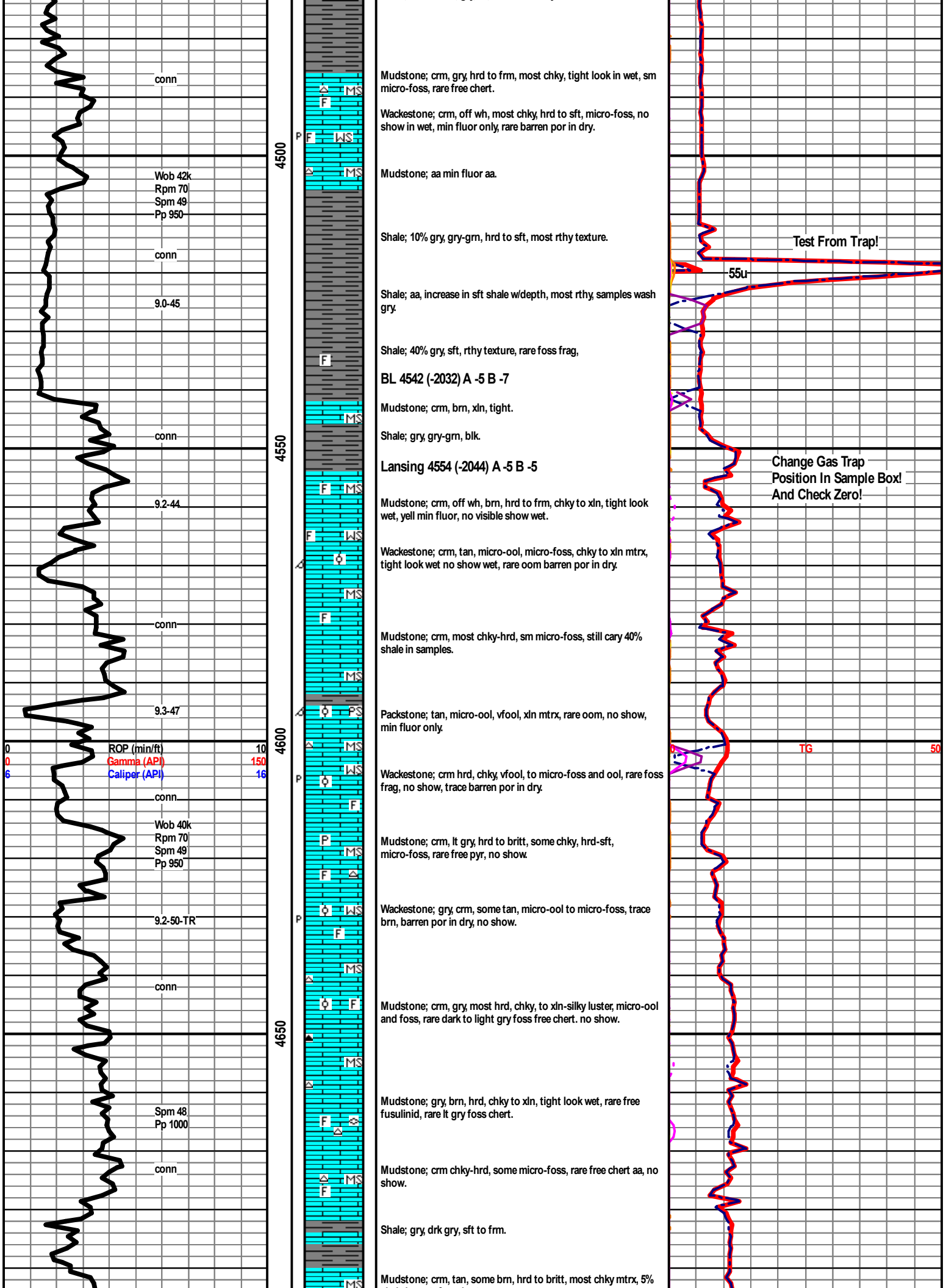
9.1-48

conn

Rwa 0.046 Sp-55

TG

50



conn

Wob 42k  
Rpm 70  
Spm 49  
Pp 950

conn

9.0-45

conn

9.2-44

conn

9.3-47

ROP (min/ft) 10  
Gamma (API) 150  
Caliper (API) 16

conn

Wob 40k  
Rpm 70  
Spm 49  
Pp 950

9.2-50-TR

conn

Spm 48  
Pp 1000

conn

4500

4550

4600

4650

Mudstone; crm, gry, hrd to frm, most chky, tight look in wet, sm micro-foss, rare free chert.

Wackestone; crm, off wh, most chky, hrd to sft, micro-foss, no show in wet, min fluor only, rare barren por in dry.

Mudstone; aa min fluor aa.

Shale; 10% gry, gry-grn, hrd to sft, most rthy texture.

Shale; aa, increase in sft shale w/depth, most rthy, samples wash gry.

Shale; 40% gry, sft, rthy texture, rare foss frag.

BL 4542 (-2032) A -5 B -7

Mudstone; crm, brn, xln, tight.

Shale; gry, gry-grn, blk.

Lansing 4554 (-2044) A -5 B -5

Mudstone; crm, off wh, brn, hrd to frm, chky to xln, tight look wet, yell min fluor, no visible show wet.

Wackestone; crm, tan, micro-ool, micro-foss, chky to xln mtrx, tight look wet no show wet, rare oom barren por in dry.

Mudstone; crm, most chky-hrd, sm micro-foss, still cary 40% shale in samples.

Packstone; tan, micro-ool, vfool, xln mtrx, rare oom, no show, min fluor only.

Wackestone; crm hrd, chky, vfool, to micro-foss and ool, rare foss frag, no show, trace barren por in dry.

Mudstone; crm, lt gry, hrd to britt, some chky, hrd-sft, micro-foss, rare free pyr, no show.

Wackestone; gry, crm, some tan, micro-ool to micro-foss, trace brn, barren por in dry, no show.

Mudstone; crm, gry, most hrd, chky, to xln-silky luster, micro-ool and foss, rare dark to light gry foss free chert. no show.

Mudstone; gry, brn, hrd, chky to xln, tight look wet, rare free fusulinid, rare lt gry foss chert.

Mudstone; crm chky-hrd, some micro-foss, rare free chert aa, no show.

Shale; gry, drk gry, sft to frm.

Mudstone; crm, tan, some brn, hrd to britt, most chky mtrx, 5%

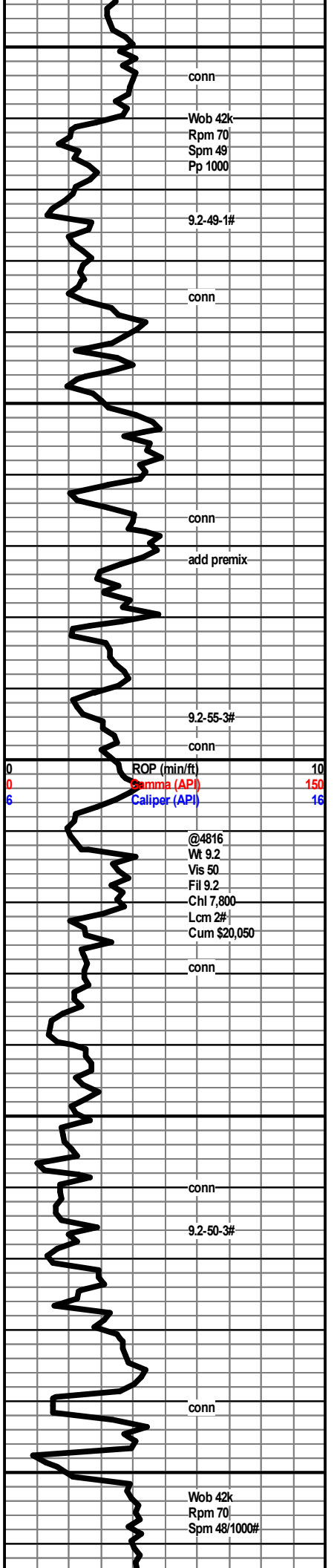
Test From Trap!

55u

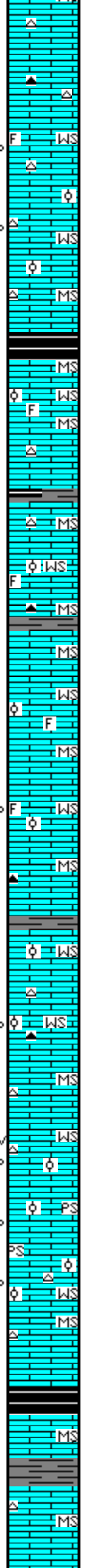
Change Gas Trap  
Position In Sample Box!  
And Check Zero!

TG

50



4700  
4750  
4800  
4850  
4900



shale here, tr free chert.

Mudstone; influx brn, hrd, xln-silky texture, tight, free light and drk chert here, 20% shale here.

Wackestone; crm, off wh, micro-ool to micro-foss, tight looking wet, min fluor, rare free foss chert, 20% shale here.

Wackestone / Mudstone; most chky, hrd, britt, micro-ool, micro-foss, no show, rare tan free chert, 10% shale here, aa barren por in dry sample, min fluor only.

Shale; 5% influx, blk, carb, soft, no visible gas bubbles.

Wackestone; had, tight, chky mtrix, micro-ool to foss, no show.

Mudstone; crm, off wh chky, rare gry spicular chert, 10% shale here.

Mudstone / Shale aa, trace free off wh, opq chert.

Mudstone / Wackestone; micro-ool to micro-foss, tight look wet, rare por in dry, no show, rare free orgn chert and opaque foss chert, rare mudstone with secondary calc.

Wackestone; crm, off wh, micro-ool, micro-foss, tigh, chky matrix, dull gold min fluor, no show.

Mudstone; crm, off wh, some gry, most chky-hrd.

Wackestone; micro-ool to micro-foss, tight look wet, min fluor only, rare barren por dry, no show.

Mudstone; crm, hrd to britt, most chky, tight, rare brn and gry free chert, sharp to blocky, some foss.

Shale; 10%; dark gry, blk.

Wackestone; crm, lt tan, hrd, chky, some xln mtrx, vfool to micro-ool, no show, wet or dry.

Wackestone; crm, chky mico-ool some tan, yell to dull gold min fluor, no show wet, rare bone wh and blk chert, rare barren por in dry.

Mudstone; brn-xln, gry-chky, tight rare free lt gry blocky chert.

Wackestone / Packstone; crm, brn, britt, chky to xln matrix, vfool to micro-ool, no visible show in wet or dry, rare visible barren por in the wet, dull min fluor.

Wackestone / Packstone; tan to lt brn, hrd to britt, vfool to micro-ool, most with chky matrix, rare visible barren por, in wet sample, dull gold to yell min fluor, no show.

Mudstone; crm hrd to britt, chky, tan to brn hrd-xln, tight, rare free opq chert. Shale; trace in samples, gry to blk most sft.

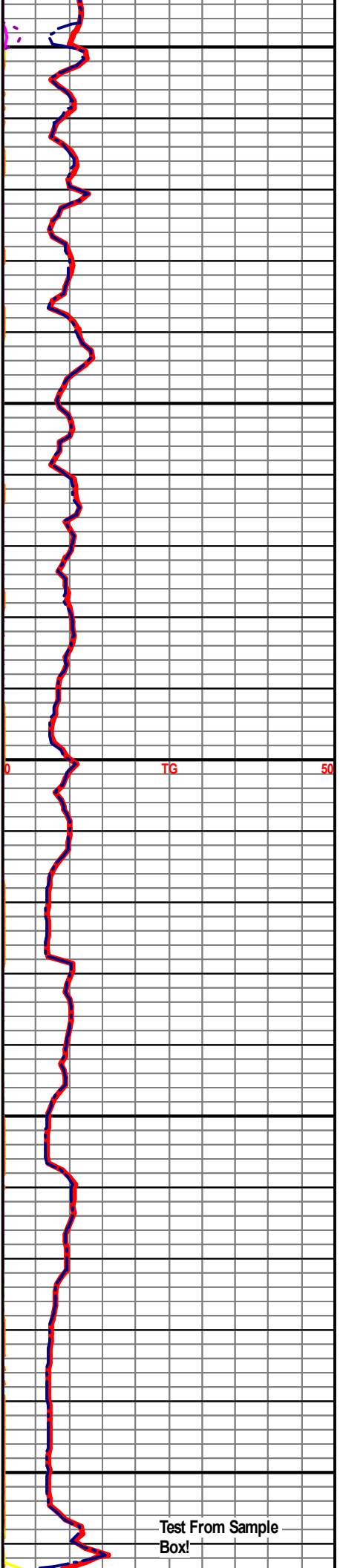
**Stark 4899 (-2379) A -11 B -9**

Shale; small influx blk-carb, soft, no vis gas.

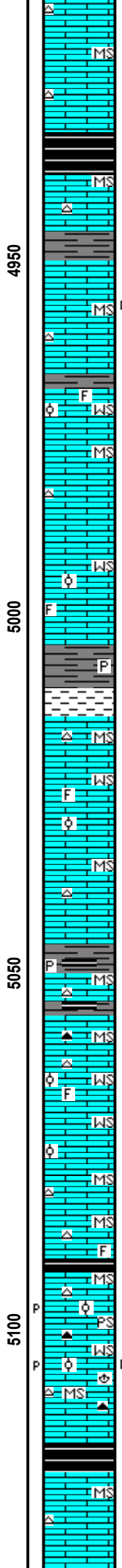
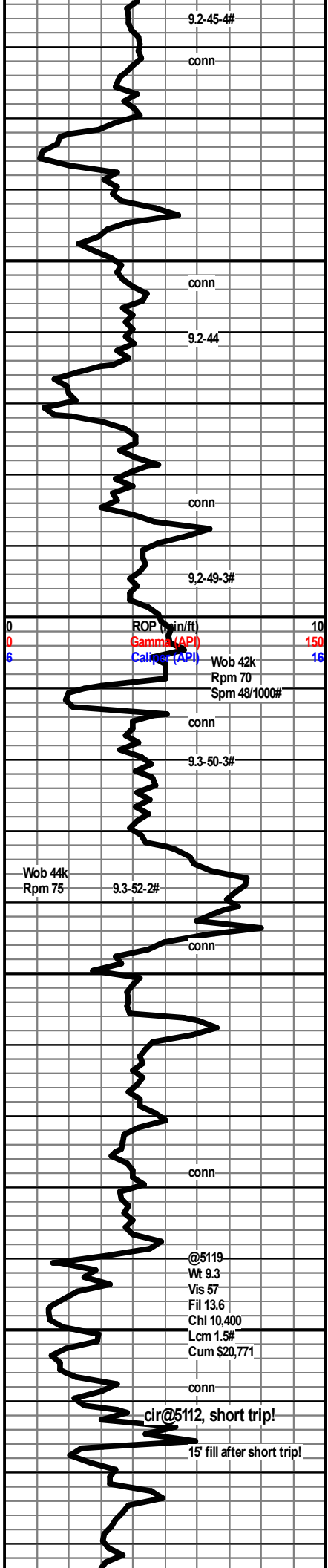
Shale; influx, gry, drk gry, gry-grm, some sub wxy, and blk carb.

Mudstone; crm, off wh, hrd, to sft, chky, tight, rare gray opq free chert.

Mudstone; most aa; influx, brn, xln hrd, dns, rare lt gry opq free



Test From Sample Box!



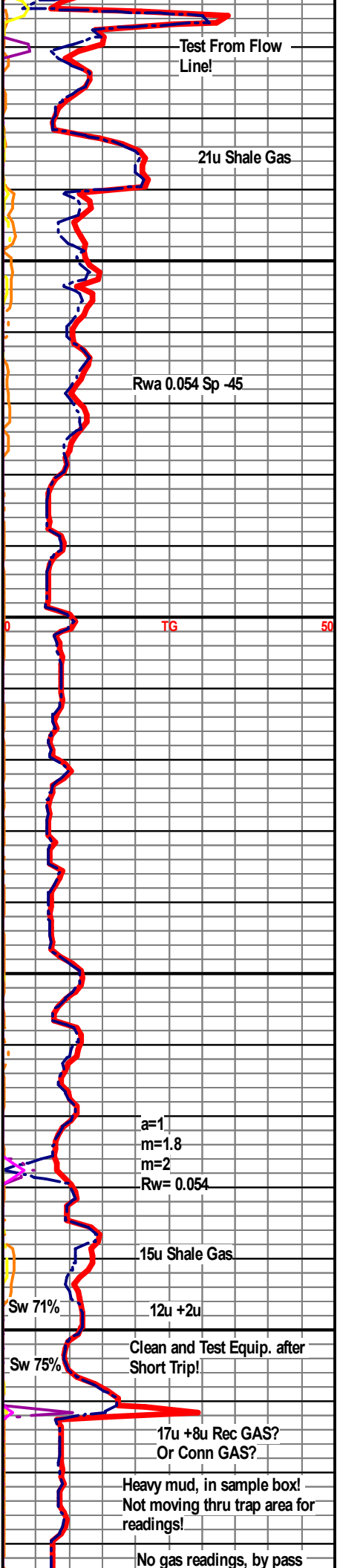
chert, rare WS; w/p & oom barren por, no show-cave!

**Husp. 4932 (-2422) A-8 B -16**  
 Shale; blk, hrd, blk to tab, carb, gas w/broken.  
 Mudstone; crm, off wh, hrd to britt, some sft-chky, rare pale gry free chert.  
 Shale; gry and drk gry.  
 Mudstone; crm, tan, hrd-chky, brn xln hrd, rare drk wormy stn, no cut, free pale blue chert, (30%) shale here.

**Marmaton 5015 (-2505) A-8 B -6**  
 Mudstone; crm, hrd to sft, chky, brn-hrd-xln dense, rare blue-gry blocky free chert.  
 Weckestone; gry, hrd, micro-ool and micro-foss in chky matrix, rare lt qrtz laminations, no show.  
 Mudstone; tan, gry, hrd, chky, off wh, soft-chky, rear blue-gry free chert.  
 Shale; 10%-15% blk, gry, drk gry, rare pale gm, rare pyr in mtrx.  
 Mudstone; crm, gry, lt brn, hrd-chky some mottled, rare gry, & blk free chert.  
 Wackestone; tan, lt brn, micro-ool to med-ool, chky mtrx, no show, rare bone wh foss chert.  
 Wackestone; off wh, micro-ool to med-ool, sft, frn, chky mtrx, some bright min fluor-no show  
 Mudstone; off wh, crm to tan, britt to sft, most chky mtrx, some bright min fluor aa, no show, rare crm to lt blue chert.

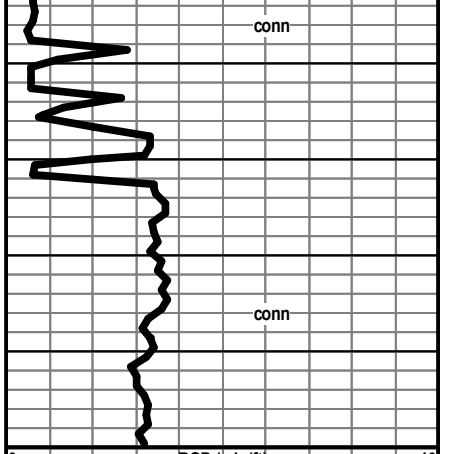
**Pawnee 5092 (-2582) A-7 B -6**  
 Shale; blk, carb, rare gas when broken.  
 Pawnee; Packstone to Wackestone; off white, cream, micro-oolitic to some fine to medium oolitic, brittle to occasional friable, tight looking chalky matrix in wet, some with bright mineral fluorescence, no cut, rare barren porosity in the dry, rare wormy stain-no cut, traces free chert, rare free fossil fragment.

**Labette 5116 (-2582) A-6 B -4**  
 Shale; blk, rare visible gas when broken  
 Mudstone; crm to tan, some off wh, most chky, hard to sft, some tan and lt brn-dense-xln, no show, rare wormy stn-no cut, no visible por in dry, rare free chert some foss, sample quality very poor after trip!









0	ROP (min/ft)	10
0	Gamma (API)	150
6	Caliper (API)	16

RTD 5,400' @ 11:13 hrs.  
11/09/14

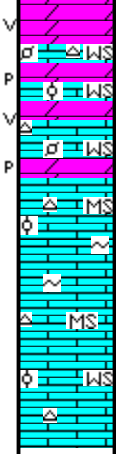
E-Log TD 5,400'

5400

5450

5500

5550



show sample are rare dolomite from above, no odor here.

Dolomite; buff to light gry, hrd, gritty, min-fluor only, barren por in dry, and ool to pell Wackestone; no new shows

Mudstone; to Wackestone; crm to off wh, micro-ool, micro-pell in chky mtrx, rare glauc in mtrx, trace bone wh and opq chet, some foss, no show, no por in wet or dry.

Mudstone; crm, off wh, britt to sft, most chky occ silky-xln, sl inc in mtrx glauc, less oolitic and pell Wackestone and Packstone with depth, no vis por in dry, tr wh and blue gry free foss chert here.

Wackestone; slight inc in % crm, micro-ool with chky mtrx, influx wh and opq free chert here.

### Circulated Zones Detail

Cir 5277', Miss 60min: Dolomite; tan, brn-oil sat?, hrd to vry hrd, blocky to tab shape, vry fine suc to gritty text, vis pp and small vgy por, trace with micro-ool look, vis bleeding brn oil and gas, some oil only when crushed, tr with no show-tt look, brt fluor, inst brt yell-wh cut, good odor after washed. Wackestoon; 20% new looking off wh, chky sandy text (carbonate sand), some with vryf xin look, some off wh, chalky, vf-ool Wackestone, no show.

Cir Miss 5277', 90min; Samples and show aa, increase in Wackestone; off wh, chky, sandy text and chky vf-ool Wackestone off wh to wh and some cream, no show in the Wackestone, only dolomite sample shows.

Chert; cir 5254', 30min 20%, vry colored, rare with spotty drk stn and bleeding gas, no odor, fluor cut, no visible oil. 40% vry colored shales aa, 40% Mudstone as above, trace wh ool Wackestone with brt fluor-no cut.

Chert; cir 5254', 60min 50%, vry colored, most fresh, sm with barren spty por-wet?, 5% off wh to wh, with wthrd surfaces, vis por with bleed drk brn oil and free oil in por, vey dull fluor, however inst bright cut, faint odor prior to washing smple, no odor when washed. Dry sample has some even drk and brn stan, and some wh spty stain.

B/P 5234', 30min Mudstone; crm, tan, tr wh-chky-sft, sm micro-foss, rare tan w/tr glauc, tr fluor-no cut, rare chert with drk inclu, tight look wet.

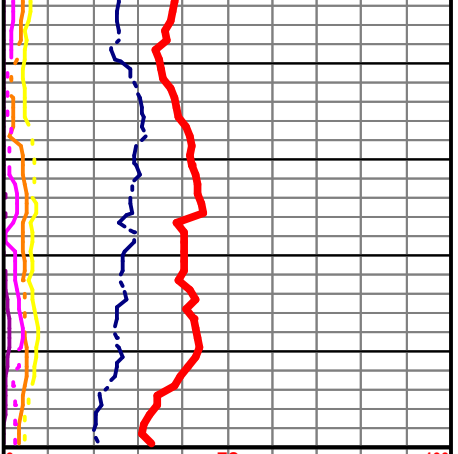
B/P 5234', 60min Mudstone; crm, off wh, trace tan, chky, most hrd to britt, some sft, rare foss inclu, rare spotty blk stn-no cut, Sh; 10% inc gry, gry-grm, rare grm-arneaceous.

B/P 5234', 90min Mudstone as above, with scatt micro-ool Wackestone; rare spotty stn on mudstone-no cut, no show.

Pawnee cir 5112', 30min; Packstone to Wackestone; off wh, crm, micro-ool to med ool in chky mtrx, some with bright min fluor-no cut, looks tight in wet, no show-wet, rare gry, brn free chert, rare barren por in dry, trace carb shale here, no vis gas.

Pawnee cir 5112', 60min; Wackestone to Packstone; aa, chky, some with bright fluor-no cut, no visible show or odor, 5% blk carb shale here, rare gas when broken, rare barren por in dry sample.

Pawnee cir 5112', 90min; Packstone to Wackestone; off wh, crm, micro-ool to small and med ool, chky mtrx, no show wet, rare wormy blk stn-no cut, rare blk carb shale here, rare barren por in dry, sm secondary calc lined, no show dry.



Micro xover on open hole logs 5318 - 5323; Open hole logs indicate this zone to be limestone. using a Rw 0.055 this zone calculates @ 70%- 90% Sw. Samples were run again from 5330' - 5370'. Only old dolomite shows from tested zone above was observed. (1sample) crm limestone with fluor and cut was observed in the 5330' sample. However it lags above the zone in question.

