



TRILOBITE TESTING, INC.

DRILL STEM TEST REPORT

Samuel Gary JR & Assc. INC

19 4 31 Rawlins KS

1515 Wynkoop STE 700
Denver CO 80202

Schmidt 1-19

Job Ticket: 59994

DST#: 2

ATTN: Chris Mitchell

Test Start: 2014.11.11 @ 13:50:00

GENERAL INFORMATION:

Formation: **LKC " C & D"**

Deviated: No Whipstock: ft (KB)

Time Tool Opened: 16:15:00

Time Test Ended: 22:27:00

Test Type: Conventional Bottom Hole (Reset)

Tester: Robert Zodrow

Unit No: 49

Interval: 3851.00 ft (KB) To 3890.00 ft (KB) (TVD)

Reference Elevations: 2817.00 ft (KB)

Total Depth: 3890.00 ft (KB) (TVD)

2812.00 ft (CF)

Hole Diameter: 7.88 inches Hole Condition: Fair

KB to GR/CF: 5.00 ft

Serial #: 8959 Outside

Press @ Run Depth: 209.08 psig @ 3852.00 ft (KB)

Capacity: 8000.00 psig

Start Date: 2014.11.11

End Date:

2014.11.11

Last Calib.:

2014.11.11

Start Time: 13:50:05

End Time:

22:27:00

Time On Btm:

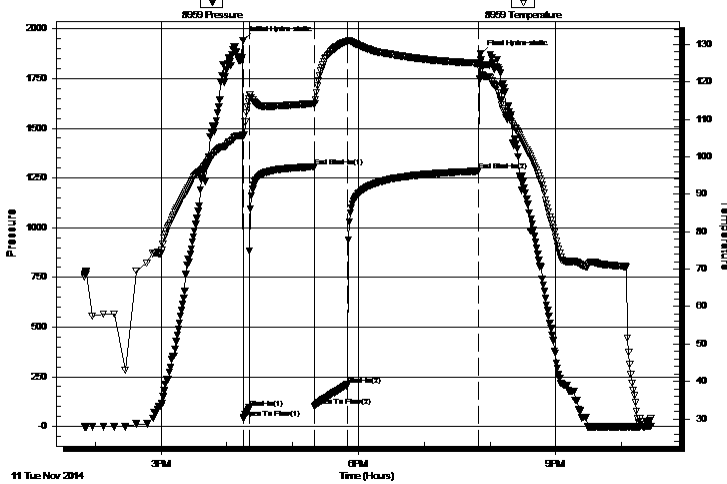
2014.11.11 @ 16:14:30

Time Off Btm:

2014.11.11 @ 19:51:00

TEST COMMENT: 5-IF- Blow built to 7"
60-ISI- Return built to 1/8"
30-FF- Bob in 11 mins
120-FSI- No return

Pressure vs. Time



PRESSURE SUMMARY

Time (Min.)	Pressure (psig)	Temp (deg F)	Annotation
0	1942.32	105.93	Initial Hydro-static
1	40.35	105.63	Open To Flow (1)
6	93.56	115.49	Shut-In(1)
65	1306.50	114.24	End Shut-In(1)
66	102.20	114.12	Open To Flow (2)
95	209.08	130.79	Shut-In(2)
215	1285.07	124.98	End Shut-In(2)
217	1873.13	124.45	Final Hydro-static

Recovery

Length (ft)	Description	Volume (bbl)
180.00	MW 20%M 80%W	0.89
155.00	WM 45%W 55%M	2.21
65.00	OCWM 5%O 5%W 90%M	0.95

Gas Rates

	Choke (inches)	Pressure (psig)	Gas Rate (Mcf/d)

* Recovery from multiple tests



**TRILOBITE
TESTING, INC.**

DRILL STEM TEST REPORT

FLUID SUMMARY

Samuel Gary JR & Assc. INC

19 4 31 Rawlins KS

1515 Wynkoop STE 700
Denver CO 80202

Schmidt 1-19

Job Ticket: 59994

DST#: 2

ATTN: Chris Mitchell

Test Start: 2014.11.11 @ 13:50:00

Mud and Cushion Information

Mud Type: Gel Chem
Mud Weight: 9.00 lb/gal
Viscosity: 74.00 sec/qt
Water Loss: 8.09 in³
Resistivity: ohm.m
Salinity: 700.00 ppm
Filter Cake: 1.00 inches

Cushion Type:
Cushion Length: ft
Cushion Volume: bbl
Gas Cushion Type:
Gas Cushion Pressure: psig

Oil API: deg API
Water Salinity: 67000 ppm

Recovery Information

Recovery Table

Length ft	Description	Volume bbl
180.00	MW 20%M 80%W	0.885
155.00	WM 45%W 55%M	2.209
65.00	OCWM 5%O 5%W 90%M	0.951

Total Length: 400.00 ft Total Volume: 4.045 bbl

Num Fluid Samples: 0

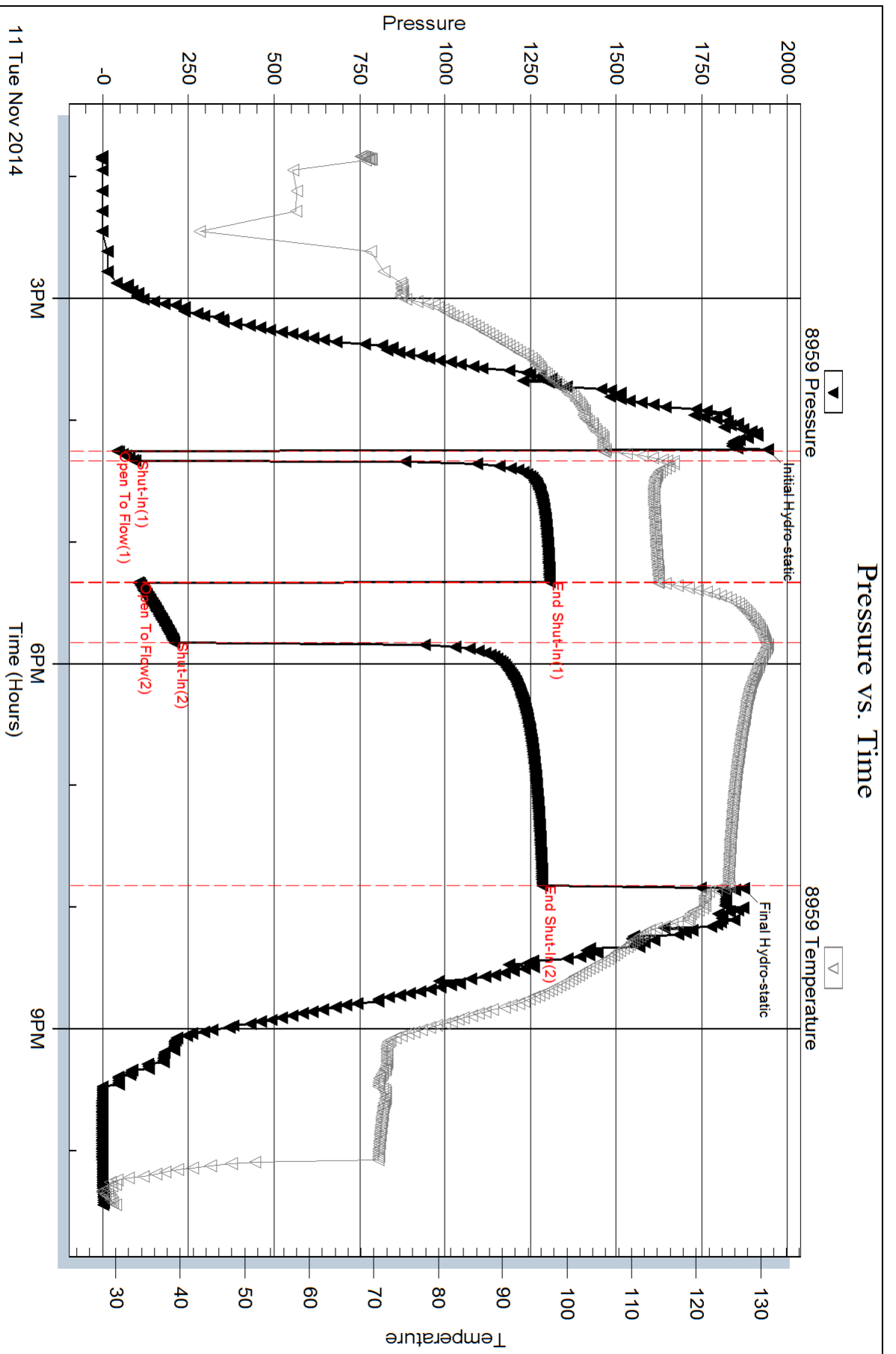
Num Gas Bombs: 0

Serial #:

Laboratory Name:

Laboratory Location:

Recovery Comments: RW .155 @ 57 deg F = 67000



Serial #: 8521

Inside

Samuel Gary JR & Assc. INC

Schmidt 1-19

DST Test Number: 2

