



**TRILOBITE TESTING, INC.**

# DRILL STEM TEST REPORT

Samuel Gary JR & Assc. INC

**19 4 31 Rawlins KS**

1515 Wynkoop STE 700  
Denver CO 80202

**Schmidt 1-19**

Job Ticket: 59995

**DST#: 3**

ATTN: Chris Mitchell

Test Start: 2014.11.12 @ 09:20:00

## GENERAL INFORMATION:

Formation: **LKC "F & G"**

Deviated: No Whipstock: ft (KB)

Time Tool Opened: 12:51:00

Time Test Ended: 19:17:30

Test Type: Conventional Bottom Hole (Reset)

Tester: Robert Zodrow

Unit No: 49

**Interval: 3888.00 ft (KB) To 3933.00 ft (KB) (TVD)**

Reference Elevations: 2817.00 ft (KB)

Total Depth: 3933.00 ft (KB) (TVD)

2812.00 ft (CF)

Hole Diameter: 7.88 inches Hole Condition: Fair

KB to GR/CF: 5.00 ft

**Serial #: 8959 Outside**

Press @ Run Depth: 196.02 psig @ 3889.00 ft (KB)

Capacity: 8000.00 psig

Start Date: 2014.11.12

End Date:

2014.11.12

Last Calib.:

2014.11.12

Start Time: 09:20:05

End Time:

19:17:30

Time On Btm:

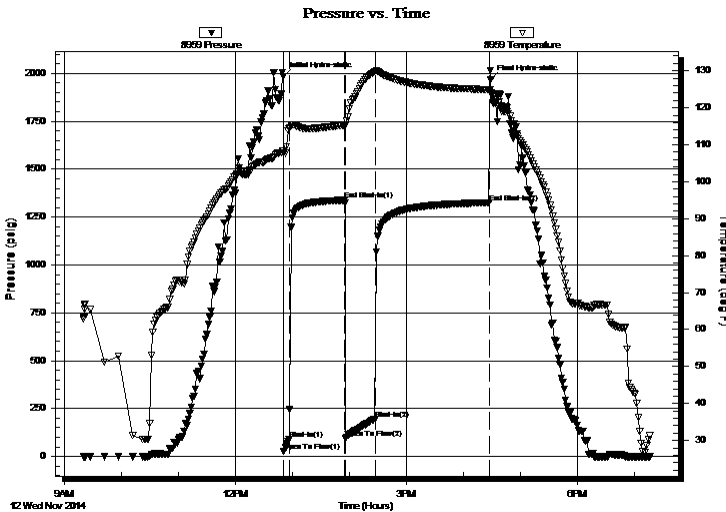
2014.11.12 @ 12:50:30

Time Off Btm:

2014.11.12 @ 16:29:00

**TEST COMMENT:** 5-IF- Blow built to 5 1/4"  
60-ISI- Return built to 1"  
30-FF- Bob in 12 mins  
120-FSI- Return built to surface died in 75 mins

## PRESSURE SUMMARY



Time (Min.)	Pressure (psig)	Temp (deg F)	Annotation
0	1984.02	108.39	Initial Hydro-static
1	26.28	107.82	Open To Flow (1)
6	88.53	114.31	Shut-In(1)
65	1337.75	115.33	End Shut-In(1)
66	93.35	115.10	Open To Flow (2)
97	196.02	129.81	Shut-In(2)
217	1325.91	124.87	End Shut-In(2)
219	1967.23	123.95	Final Hydro-static

## Recovery

Length (ft)	Description	Volume (bbl)
300.00	MW 27%M 73%W	2.58
70.00	WM 10%W 90%M	1.02

## Gas Rates

	Choke (inches)	Pressure (psig)	Gas Rate (Mcf/d)

\* Recovery from multiple tests



# TRILOBITE TESTING, INC.

## DRILL STEM TEST REPORT

Samuel Gary JR & Assc. INC

19 4 31 Rawlins KS

1515 Wynkoop STE 700  
Denver CO 80202

**Schmidt 1-19**

ATTN: Chris Mitchell

Job Ticket: 59995

**DST#: 3**

Test Start: 2014.11.12 @ 09:20:00

**GENERAL INFORMATION:**

Formation: <b>LKC "F &amp; G"</b>			
Deviated: No Whipstock:	ft (KB)	Test Type: Conventional Bottom Hole (Reset)	
Time Tool Opened: 12:51:00		Tester: Robert Zodrow	
Time Test Ended: 19:17:30		Unit No: 49	
<b>Interval: 3888.00 ft (KB) To 3933.00 ft (KB) (TVD)</b>		Reference Elevations: 2817.00 ft (KB)	
Total Depth: 3933.00 ft (KB) (TVD)		2812.00 ft (CF)	
Hole Diameter: 7.88 inches	Hole Condition: Fair	KB to GR/CF: 5.00 ft	

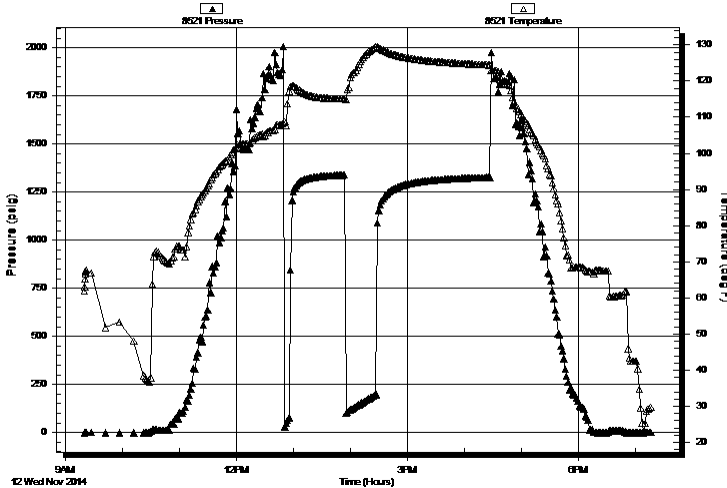
**Serial #: 8521**

Inside

Press @RunDepth:	psig @	3889.00 ft (KB)	Capacity:	8000.00 psig	
Start Date:	2014.11.12	End Date:	2014.11.12	Last Calib.:	2014.11.12
Start Time:	09:20:05	End Time:	19:17:00	Time On Btm:	
				Time Off Btm:	

**TEST COMMENT:** 5-IF- Blow built to 5 1/4"  
60-ISI- Return built to 1"  
30-FF- Bob in 12 mins  
120-FSI- Return built to surface died in 75 mins

**Pressure vs. Time**



**PRESSURE SUMMARY**

Time (Min.)	Pressure (psig)	Temp (deg F)	Annotation

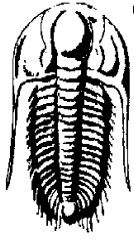
**Recovery**

Length (ft)	Description	Volume (bbl)
300.00	MW 27%M 73%W	2.58
70.00	WM 10%W 90%M	1.02

\* Recovery from multiple tests

**Gas Rates**

Choke (inches)	Pressure (psig)	Gas Rate (Mcf/d)



**TRILOBITE TESTING, INC.**

# DRILL STEM TEST REPORT

Samuel Gary JR & Assc. INC

**19 4 31 Rawlins KS**

1515 Wynkoop STE 700  
Denver CO 80202

**Schmidt 1-19**

Job Ticket: 59995

**DST#: 3**

ATTN: Chris Mitchell

Test Start: 2014.11.12 @ 09:20:00

## GENERAL INFORMATION:

Formation: **LKC "F & G"**

Deviated: No Whipstock: ft (KB)

Time Tool Opened: 12:51:00

Time Test Ended: 19:17:30

Test Type: Conventional Bottom Hole (Reset)

Tester: Robert Zodrow

Unit No: 49

**Interval: 3888.00 ft (KB) To 3933.00 ft (KB) (TVD)**

Reference Elevations: 2817.00 ft (KB)

Total Depth: 3933.00 ft (KB) (TVD)

2812.00 ft (CF)

Hole Diameter: 7.88 inches Hole Condition: Fair

KB to GR/CF: 5.00 ft

## Serial #: 6741

Press @ Run Depth: psig @ 3856.00 ft (KB)

Capacity: 8000.00 psig

Start Date: 2014.11.12 End Date: 2014.11.12

Last Calib.: 2014.11.12

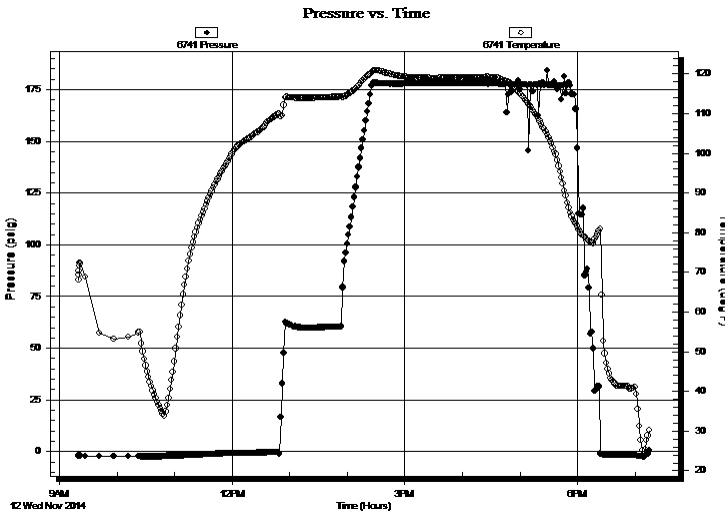
Start Time: 09:20:05 End Time: 19:15:30

Time On Btm:

Time Off Btm:

TEST COMMENT: 5-IF- Blow built to 5 1/4"  
60-ISI- Return built to 1"  
30-FF- Bob in 12 mins  
120-FSI- Return built to surface died in 75 mins

## PRESSURE SUMMARY



Time (Min.)	Pressure (psig)	Temp (deg F)	Annotation

## Recovery

Length (ft)	Description	Volume (bbl)
300.00	MW 27%M 73%W	2.58
70.00	WM 10%W 90%M	1.02

\* Recovery from multiple tests

## Gas Rates

Choke (inches)	Pressure (psig)	Gas Rate (Mcf/d)



**TRILOBITE  
TESTING, INC.**

# DRILL STEM TEST REPORT

## FLUID SUMMARY

Samuel Gary JR & Assc. INC

**19 4 31 Rawlins KS**

1515 Wynkoop STE 700  
Denver CO 80202

**Schmidt 1-19**

Job Ticket: 59995

**DST#: 3**

ATTN: Chris Mitchell

Test Start: 2014.11.12 @ 09:20:00

### Mud and Cushion Information

Mud Type: Gel Chem

Cushion Type:

Oil API:

deg API

Mud Weight: 9.00 lb/gal

Cushion Length:

ft

Water Salinity:

80000 ppm

Viscosity: 72.00 sec/qt

Cushion Volume:

bbbl

Water Loss: 8.79 in<sup>3</sup>

Gas Cushion Type:

Resistivity: ohm.m

Gas Cushion Pressure:

psig

Salinity: 500.00 ppm

Filter Cake: 1.00 inches

### Recovery Information

Recovery Table

Length ft	Description	Volume bbbl
300.00	MW 27%M 73%W	2.582
70.00	WM 10%W 90%M	1.024

Total Length: 370.00 ft      Total Volume: 3.606 bbl

Num Fluid Samples: 0

Num Gas Bombs: 0

Serial #:

Laboratory Name:

Laboratory Location:

Recovery Comments: RW .166 @ 57 deg F = 80000

### Pressure vs. Time

