

## DRILL STEM TEST REPORT

Prepared For: **N-10 Expl. LLC.**

124 N. Main  
Attica, KS 67009

ATTN: Tim Pierce

**10-34s-11w Barber,KS**

**Medicine River Ranch. D #12**

Start Date: 2014.11.12 @ 08:02:43

End Date: 2014.11.12 @ 15:16:28

Job Ticket #: 59925                      DST #: 1

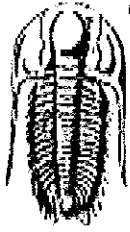
Trilobite Testing, Inc

1515 Commerce Parkway Hays, KS 67601

ph: 785-625-4778 fax: 785-625-5620

Printed: 2014.11.14 @ 09:06:42

N-10 Expl. LLC.      Medicine River Ranch. D #12      10-34s-11w Barber,KS      DST # 1      MIsener      2014.11.12



**TRILOBITE  
TESTING, INC**

# DRILL STEM TEST REPORT

N-10 Expl. LLC.

124 N. Main  
Attica, KS 67009

ATTN: Tim Pierce

Medicine River Ranch. D #12

10-34s-11w Barber,KS

Job Ticket: 59925

DST#: 1

Test Start: 2014.11.12 @ 08:02:43

## GENERAL INFORMATION:

Formation: **Misener**

Deviated: No Whipstock: ft (KB)

Time Tool Opened: 10:11:28

Time Test Ended: 15:16:28

Test Type: Conventional Bottom Hole (Initial)

Tester: Ryan Reynolds

Unit No: 68

Interval: 4827.00 ft (KB) To 4845.00 ft (KB) (TVD)

Total Depth: 4845.00 ft (KB) (TVD)

Hole Diameter: 7.88 inches Hole Condition: Fair

Reference Elevations: 1354.00 ft (KB)

1344.00 ft (CF)

KB to GR/CF: 10.00 ft

Serial #: 8790

Inside

Press@RunDepth: 44.84 psig @ 4828.00 ft (KB)

Start Date: 2014.11.12

End Date:

2014.11.12

Start Time: 08:02:48

End Time:

15:16:27

Capacity: 8000.00 psig

Last Calib.: 2014.11.12

Time On Btm: 2014.11.12 @ 10:09:58

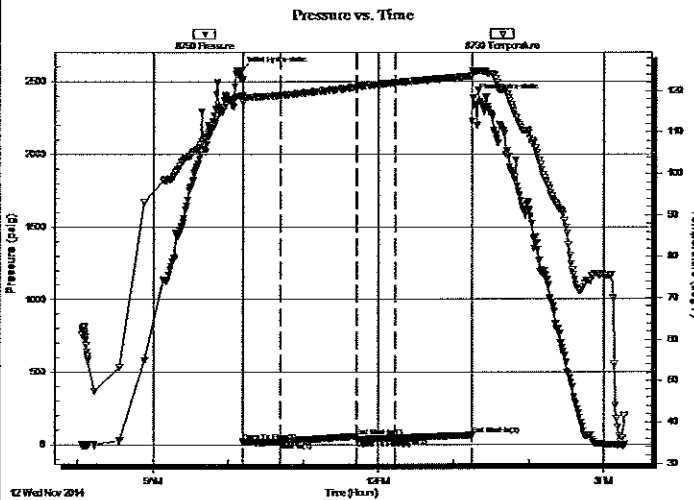
Time Off Btm: 2014.11.12 @ 13:15:58

TEST COMMENT: IF: Weak blow .dead @ 2min.

IS: No blow.

FF: No blow.

FS: No blow



## PRESSURE SUMMARY

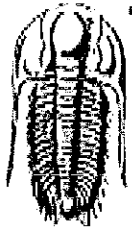
Time (Min.)	Pressure (psig)	Temp (deg F)	Annotation
0	2574.59	118.83	Initial Hydro-static
2	20.78	117.40	Open To Flow (1)
32	23.66	118.95	Shut-in(1)
93	55.74	120.87	End Shut-in(1)
93	32.07	120.90	Open To Flow (2)
124	44.84	121.95	Shut-in(2)
185	65.12	123.57	End Shut-in(2)
186	2387.74	124.37	Final Hydro-static

## Recovery

Length (ft)	Description	Volume (bbl)
5.00	Drlg mud 100% m	0.02

## Gas Rates

	Choke (inches)	Pressure (psig)	Gas Rate (m <sup>3</sup> /d)



**TRILOBITE  
TESTING, INC**

## DRILL STEM TEST REPORT

**TOOL DIAGRAM**

N-10 Expl. LLC.

**Medicine River Ranch. D #12**

124 N. Main  
Attica, KS 67009

**10-34s-11w Barber,KS**

Job Ticket: 59925

**DST#: 1**

ATTN: Tim Pierce

Test Start: 2014.11.12 @ 08:02:43

### Tool Information

Drill Pipe:	Length: 4586.00 ft	Diameter: 3.80 inches	Volume: 64.33 bbl	Tool Weight: 2000.00 lb
Heavy Wt. Pipe:	Length: 0.00 ft	Diameter: inches	Volume: 0.00 bbl	Weight set on Packer: 21000.00 lb
Drill Collar:	Length: 237.00 ft	Diameter: 2.25 inches	Volume: 1.17 bbl	Weight to Pull Loose: 90000.00 lb
			<u>Total Volume: 65.50 bbl</u>	Tool Chased 0.00 ft
Drill Pipe Above KB:	16.00 ft			String Weight: Initial 69000.00 lb
Depth to Top Packer:	4827.00 ft			Final 70000.00 lb
Depth to Bottom Packer:	ft			
Interval between Packers:	18.00 ft			
Tool Length:	38.00 ft			
Number of Packers:	2	Diameter: 6.75 inches		

Tool Comments:

Tool Description	Length (ft)	Serial No.	Position	Depth (ft)	Accum. Lengths
Change Over Sub	1.00			4808.00	
Shut In Tool	5.00			4813.00	
Hydraulic tool	5.00			4818.00	
Packer	5.00			4823.00	20.00 Bottom Of Top Packer
Packer	4.00			4827.00	
Stubb	1.00			4828.00	
Recorder	0.00	8790	Inside	4828.00	
Recorder	0.00	8792	Outside	4828.00	
Perforations	14.00			4842.00	
Bullnose	3.00			4845.00	18.00 Bottom Packers & Anchor
<b>Total Tool Length:</b>	<b>38.00</b>				



**TRILOBITE  
TESTING, INC**

# DRILL STEM TEST REPORT

**FLUID SUMMARY**

N-10 Expl. LLC.

Medicine River Ranch. D #12

124 N. Main  
Attica, KS 67009

10-34s-11w Barber,KS

Job Ticket: 59925

DST#: 1

ATTN: Tim Pierce

Test Start: 2014.11.12 @ 08:02:43

## Mud and Cushion Information

Mud Type: Gel Chem

Cushion Type:

Oil API:

deg API

Mud Weight: 9.00 lb/gal

Cushion Length:

ft

Water Salinity:

5200 ppm

Viscosity: 40.00 sec/qt

Cushion Volume:

bbbl

Water Loss: 7.99 in<sup>3</sup>

Gas Cushion Type:

Resistivity: ohm.m

Gas Cushion Pressure:

psig

Salinity: 5200.00 ppm

Filter Cake: 0.04 inches

## Recovery Information

Recovery Table

Length ft	Description	Volume bbbl
5.00	Drig mud 100%m	0.025

Total Length: 5.00 ft      Total Volume: 0.025 bbl

Num Fluid Samples: 0

Num Gas Bombs: 0

Serial #: none

Laboratory Name:

Laboratory Location:

Recovery Comments:

Serial #: 8790

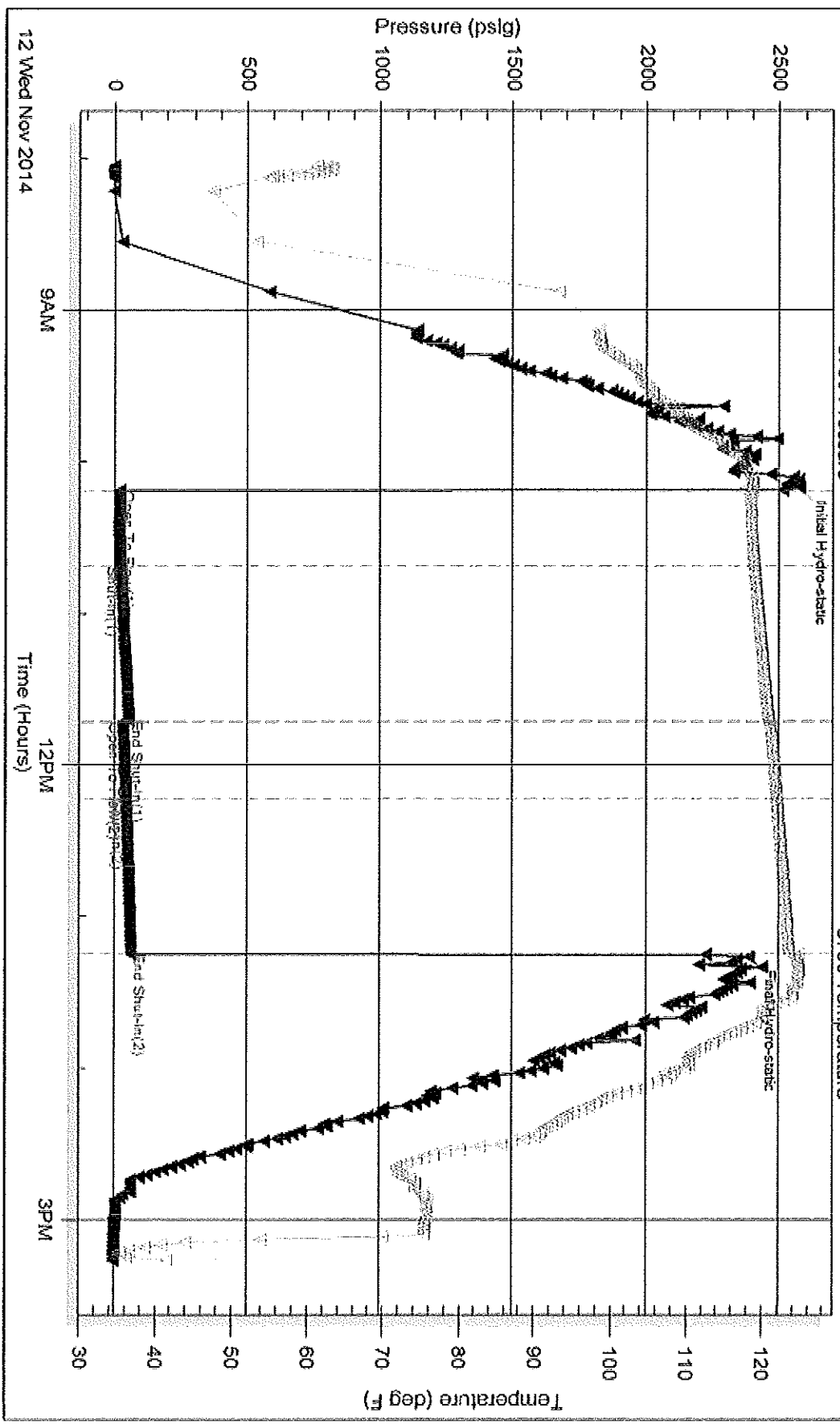
Inside

N-10 Exp. LLC.

10-345-11w Barber, KS

DST Test Number: 1

### Pressure vs. Time



Tribble Testing, Inc

Ref. No: 59925

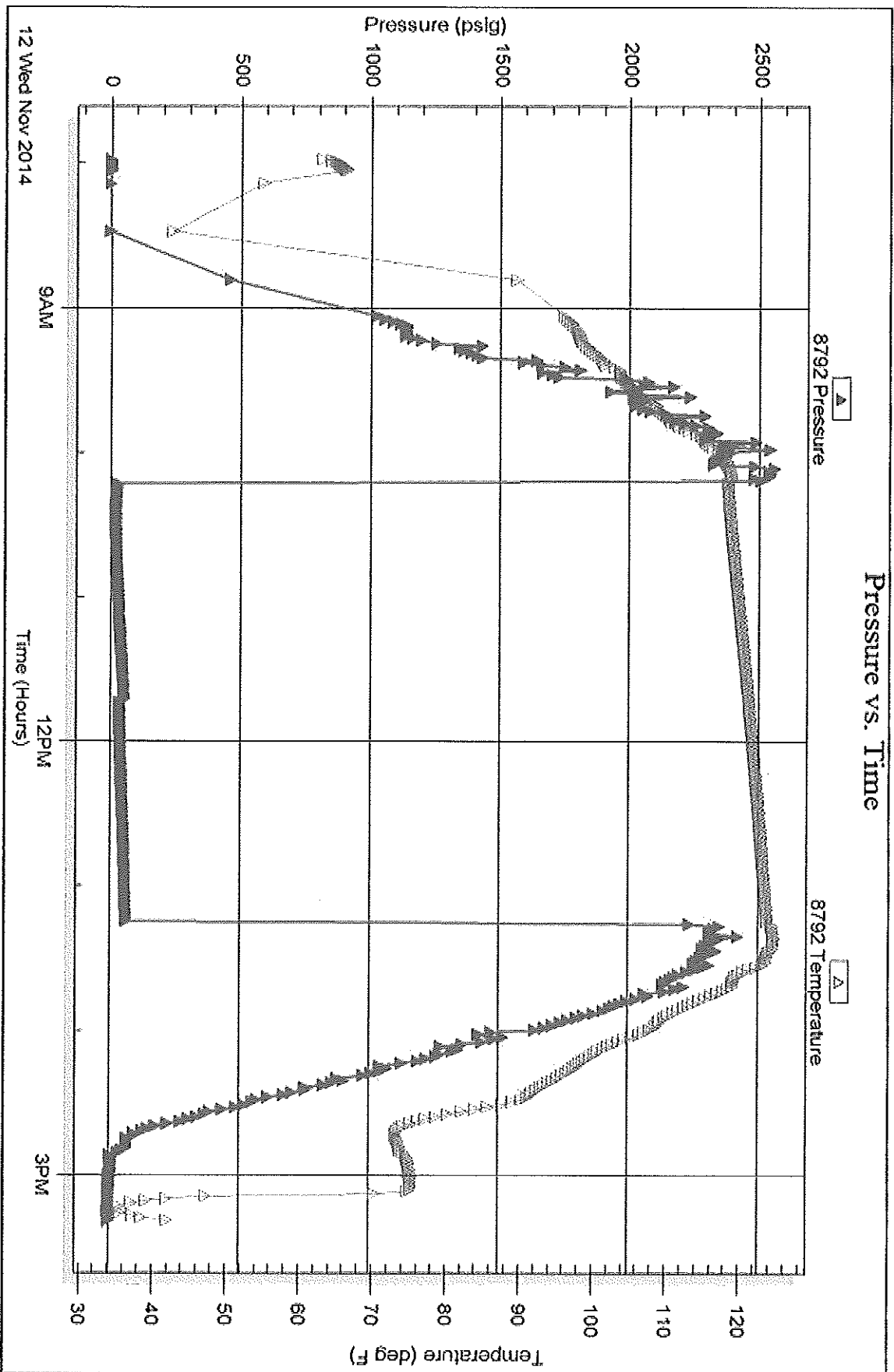
Printed: 2014 11 14 @ 09:06:44

Serial #: 8792

Outside N-10 Expl. LLC.

10-34s-11w Barber, KS

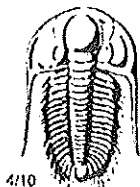
DST Test Number: 1



Tribble Testing, Inc

Ref. No: 59925

Printed: 2014.11.14 @ 09:06:44



# TRILOBITE TESTING INC.

1515 Commerce Parkway • Hays, Kansas 67601

## Test Ticket

NO. 59925

Well Name & No. Medicine River Ranch 'D' #12 Test No. 1 Date 11-12-14  
 Company N-10 Expl. LLC Elevation 1354 KB 1344 GL  
 Address 124 N. Main Attecaw, KS 67007  
 Co. Rep / Geo. Tim Pierce Rig Hardt  
 Location: Sec. 10 Twp. 34S Rge. 11W Co. Barber State KS

Interval Tested 4827 - 4845 Zone Tested Meisner  
 Anchor Length 18 Drill Pipe Run 4586 Mud Wt. 9.3  
 Top Packer Depth 4822 Drill Collars Run 237 Vis 40  
 Bottom Packer Depth 4827 Wt. Pipe Run ∅ WL 8.0  
 Total Depth 4845 Chlorides 5200 ppm System LCM 2<sup>th</sup>  
 Blow Description IF: Weak blow, surf. - Dead @ 2min. IST: No blow.  
FF: No blow. FST: No blow.

Rec	Feet of	%gas	%oil	%water	%mud
<u>5</u>	<u>Drily mud</u>			<u>100</u>	
Rec	Feet of	%gas	%oil	%water	%mud
Rec	Feet of	%gas	%oil	%water	%mud
Rec	Feet of	%gas	%oil	%water	%mud

Rec Total 5 BHT \_\_\_\_\_ Gravity N/C API RW N/C @ N/C Chlorides 5200 ppm  
 (A) Initial Hydrostatic 2575  Test 1250 T-On Location 0600  
 (B) First Initial Flow 21  Jars \_\_\_\_\_ T-Started 0803  
 (C) First Final Flow 24  Safety Joint \_\_\_\_\_ T-Open 1011  
 (D) Initial Shut-In 56  Circ Sub \_\_\_\_\_ T-Pulled 1313  
 (E) Second Initial Flow 32  Hourly Standby \_\_\_\_\_ T-Out 1516  
 (F) Second Final Flow 45  Mileage 104 161.20 Comments \_\_\_\_\_  
 (G) Final Shut-In 65  Sampler \_\_\_\_\_  
 (H) Final Hydrostatic 2388  Straddle \_\_\_\_\_  
 Ruined Shale Packer  
 Ruined Packer  
 Extra Copies  
 Initial Open 30  Extra Packer  
 Initial Shut-In 60  Extra Recorder  
 Final Flow 30  Day Standby  
 Final Shut-In 60  Accessibility  
 Sub Total 1411.20 MP/DST Disc't \_\_\_\_\_

Approved By Tim Pierce Our Representative Ryan Reynolds  
 Trilobite Testing Inc. shall not be liable for damaged of any kind of the property or personnel of the one for whom a test is made, or for any loss suffered or sustained, directly or indirectly, through the use of its equipment, or its statements or opinion concerning the results of any test, tools lost or damaged in the hole shall be paid for at cost by the party for whom the test is made.