



TRILOBITE TESTING, INC

DRILL STEM TEST REPORT

Berexco LLC.
 2020 N. Bramblewood
 Wichita Ks 67206
 ATTN: Pete Vollmer

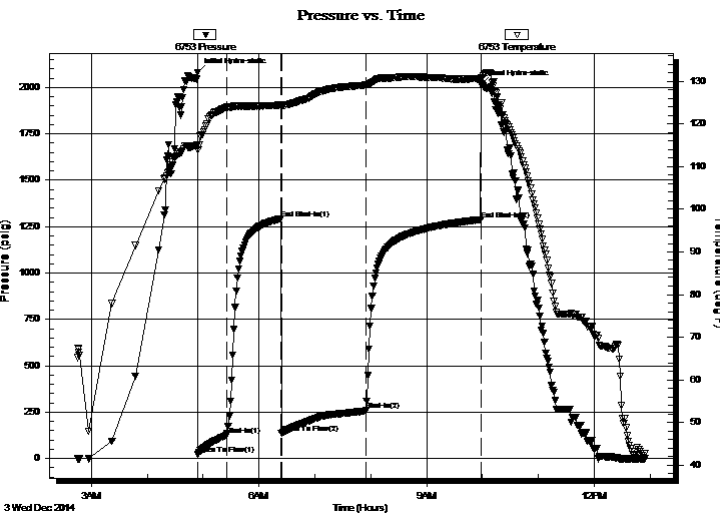
19-1S-37W
Owen Trust #1-19
 Job Ticket: 61015 **DST#: 4**
 Test Start: 2014.12.03 @ 02:45:00

GENERAL INFORMATION:

Formation: **KCL - 'D & E'**
 Deviated: No Whipstock: ft (KB)
 Time Tool Opened: 04:54:30
 Time Test Ended: 12:54:45
 Interval: **4280.00 ft (KB) To 4380.00 ft (KB) (TVD)**
 Total Depth: 4380.00 ft (KB) (TVD)
 Hole Diameter: 7.88 inches Hole Condition: Good
 Test Type: Conventional Bottom Hole (Initial)
 Tester: Royal Fisher
 Unit No: #54
 Reference Elevations: 3183.00 ft (KB)
 3170.00 ft (CF)
 KB to GR/CF: 13.00 ft

Serial #: 6753 Outside
 Press@RunDepth: 258.25 psig @ 4281.00 ft (KB) Capacity: 8000.00 psig
 Start Date: 2014.12.03 End Date: 2014.12.03 Last Calib.: 2014.12.03
 Start Time: 02:45:05 End Time: 12:54:45 Time On Btm: 2014.12.03 @ 04:54:15
 Time Off Btm: 2014.12.03 @ 09:59:00

TEST COMMENT: 30 - IF - Surface blow built to 11"
 60 - ISI - No Return
 90 - FF - Surface blow built to bottom of the bucket in 30 mins.
 120 - FSI - Return Started in 20 mins and built to 1 1/2"



PRESSURE SUMMARY

Time (Min.)	Pressure (psig)	Temp (deg F)	Annotation
0	2081.60	115.18	Initial Hydro-static
1	23.38	113.93	Open To Flow (1)
31	125.42	123.98	Shut-In(1)
90	1292.96	124.53	End Shut-In(1)
90	135.11	124.13	Open To Flow (2)
181	258.25	129.15	Shut-In(2)
305	1288.07	130.59	End Shut-In(2)
305	2014.01	130.85	Final Hydro-static

Recovery

Length (ft)	Description	Volume (bbl)
439.00	GMCO - 25M - 50o - 25G	2.16
150.00	GHMCO - 40M - 40o - 20G	1.31

Gas Rates

	Choke (inches)	Pressure (psig)	Gas Rate (Mcf/d)



**TRILOBITE
TESTING, INC**

DRILL STEM TEST REPORT

FLUID SUMMARY

Berexco LLC.

19-1S-37W

2020 N. Bramblewood
Wichita Ks 67206

Owen Trust #1-19

Job Ticket: 61015

DST#: 4

ATTN: Pete Vollmer

Test Start: 2014.12.03 @ 02:45:00

Mud and Cushion Information

Mud Type: Gel Chem

Cushion Type:

Oil API:

deg API

Mud Weight: 9.00 lb/gal

Cushion Length:

ft

Water Salinity:

ppm

Viscosity: 54.00 sec/qt

Cushion Volume:

bbbl

Water Loss: 8.39 in³

Gas Cushion Type:

Resistivity: 0.00 ohm.m

Gas Cushion Pressure:

psig

Salinity: 800.00 ppm

Filter Cake: 2.00 inches

Recovery Information

Recovery Table

Length ft	Description	Volume bbbl
439.00	GMCO - 25M - 50o - 25G	2.159
150.00	GHMCO - 40M - 40o - 20G	1.307

Total Length: 589.00 ft

Total Volume: 3.466 bbl

Num Fluid Samples: 0

Num Gas Bombs: 0

Serial #:

Laboratory Name:

Laboratory Location:

Recovery Comments:

